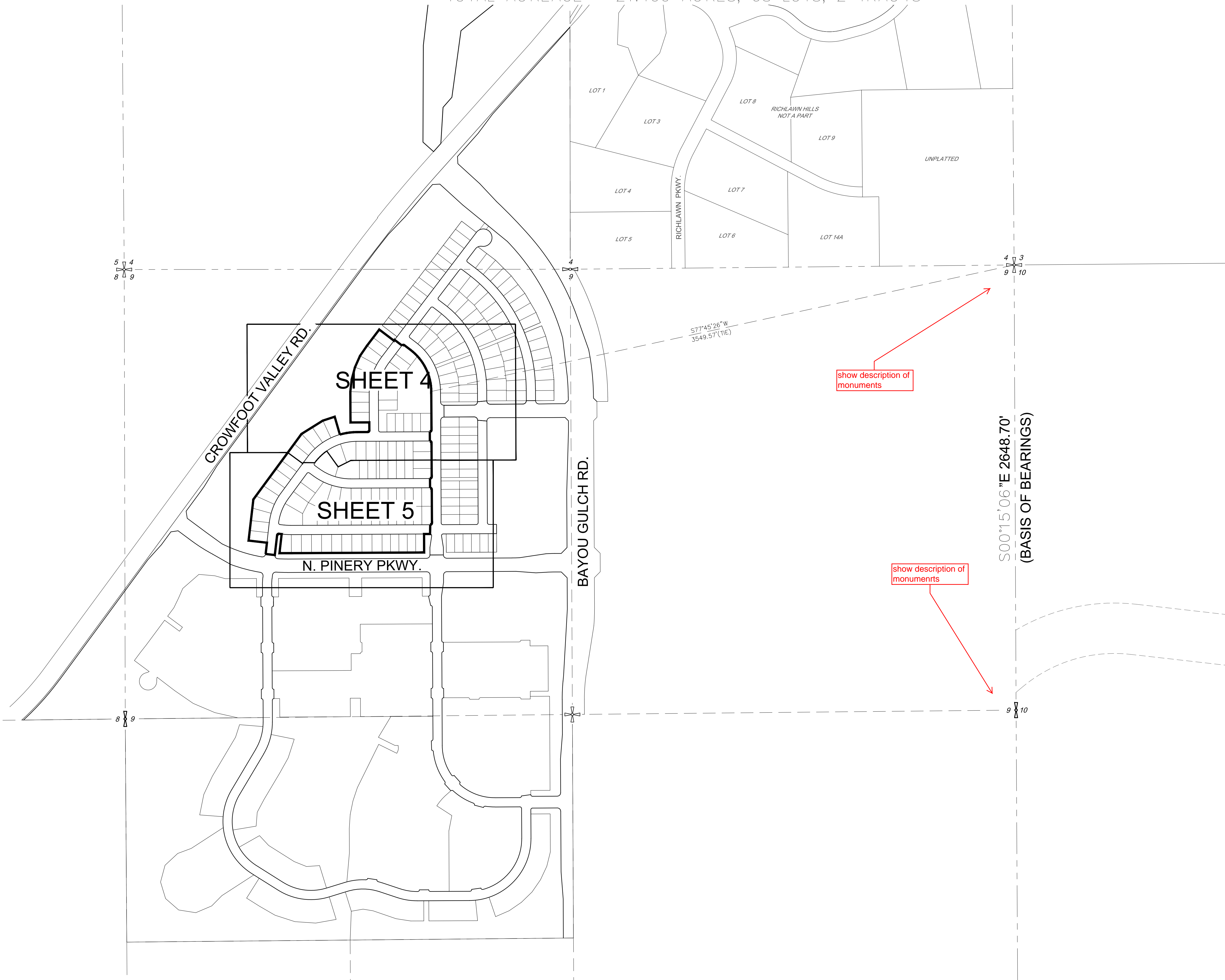


TRAILS AT CROWFOOT SUBDIVISION FILING NO. 3

A REPLAT OF TRACT 0 OF TRAILS AT CROWFOOT FILING NO. 1
 A PART OF SECTION 9, TOWNSHIP 7 SOUTH, RANGE 66 WEST OF THE 6th PRINCIPAL MERIDIAN,
 TOWN OF PARKER, COUNTY OF DOUGLAS, STATE OF COLORADO

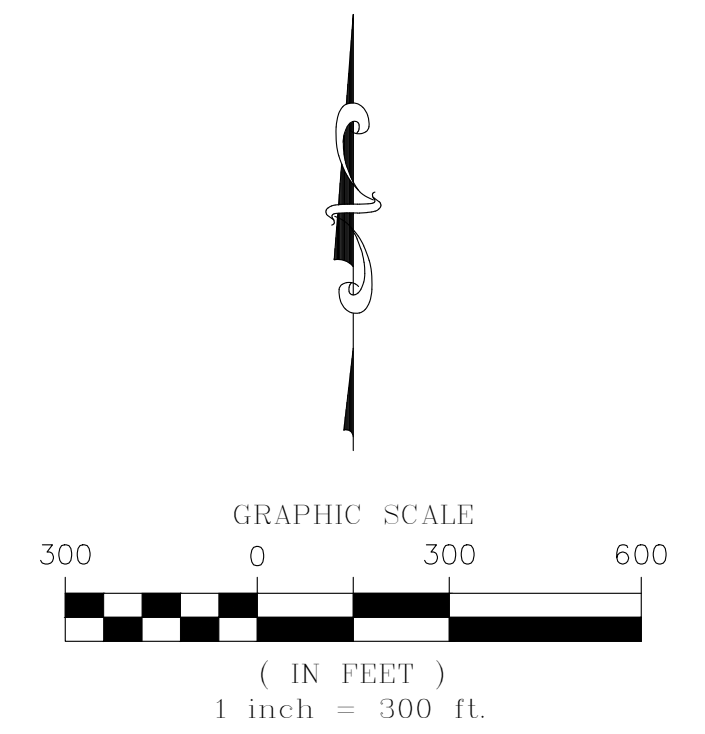
SHEET 3 OF 5

TOTAL ACREAGE = 21.400 ACRES, 98 LOTS, 2 TRACTS



show description of monuments

show description of monuments



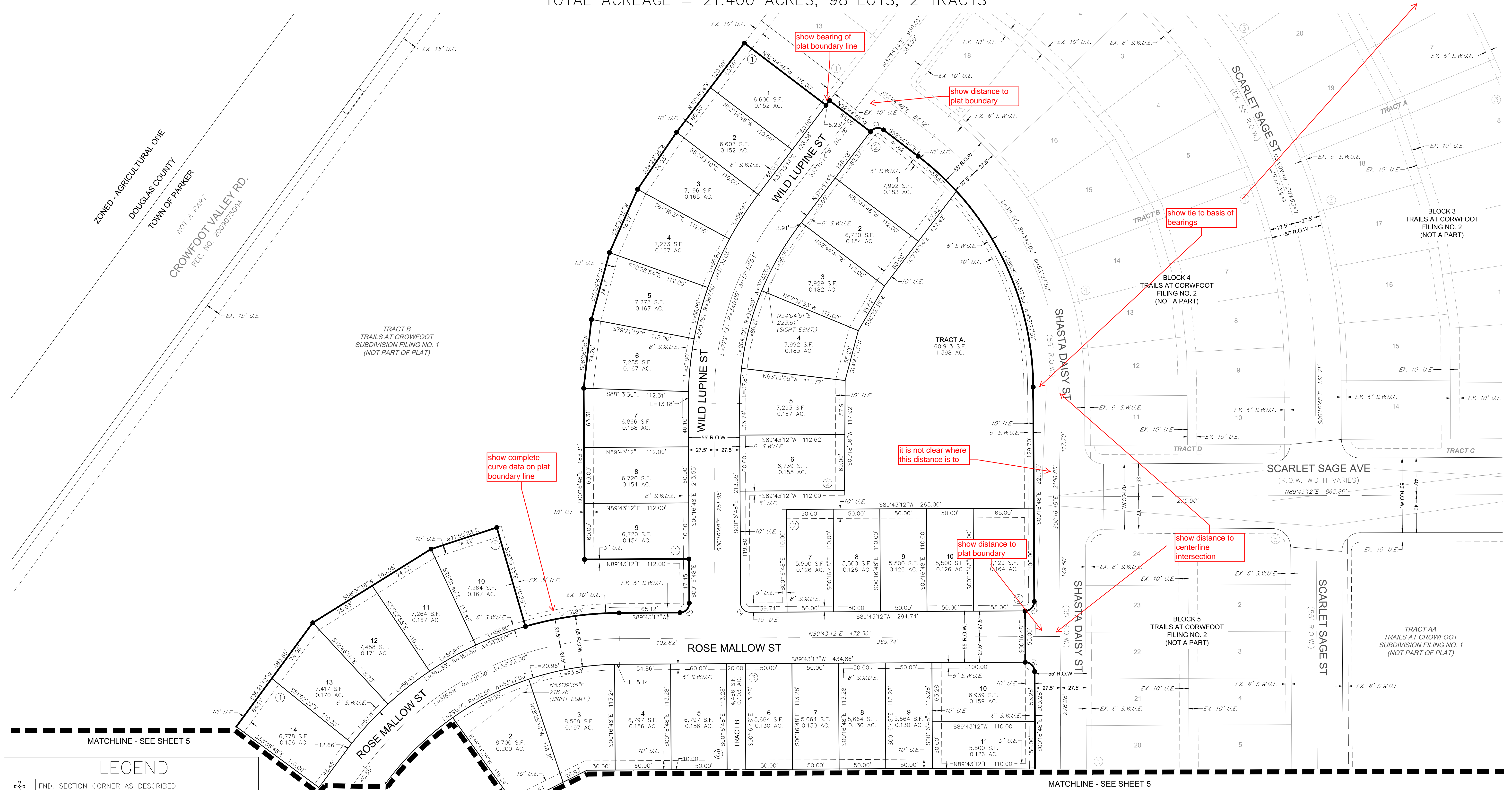
ENGINEER/SURVEYOR

CVL Consultants
 of Colorado, Inc.
 10333 E. Dry Creek Rd., Suite 240
 Englewood, CO 80112

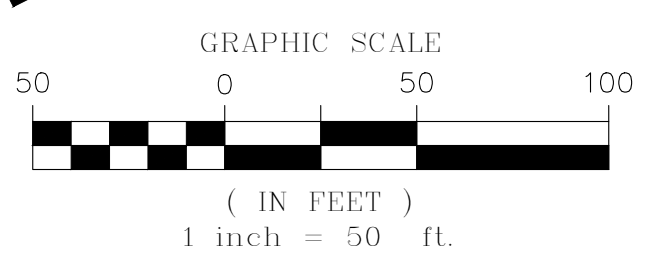
TRAILS AT CROWFOOT SUBDIVISION FILING NO. 3

A REPLAT OF TRACT 0 OF TRAILS AT CROWFOOT FILING NO. 1
 A PART OF SECTION 9, TOWNSHIP 7 SOUTH, RANGE 66 WEST OF THE 6th PRINCIPAL MERIDIAN,
 TOWN OF PARKER, COUNTY OF DOUGLAS, STATE OF COLORADO
 SHEET 4 OF 5

TOTAL ACREAGE = 21.400 ACRES, 98 LOTS, 2 TRACTS



LEGEND	
	FND. SECTION CORNER AS DESCRIBED
	R.O.W. RIGHT-OF-WAY
	S.W.U.E. SIDEWALK & UTILITY EASEMENT
	U.E. UTILITY EASEMENT
	D.U.E. DRAINAGE AND UTILITY EASEMENT
	A.E. ACCESS EASEMENT
	G.E. GAS EASEMENT
	EX U.E. EXISTING UTILITY EASEMENT
	○ FOUND REBAR & YELLOW PLASTIC CAP "LS 17666"
	● SET NO. 6 REBAR, 30" LONG, w/2" ALUMINUM CAP
	STAMPED CVL LS NO. 25369 UNLESS OTHERWISE NOTED

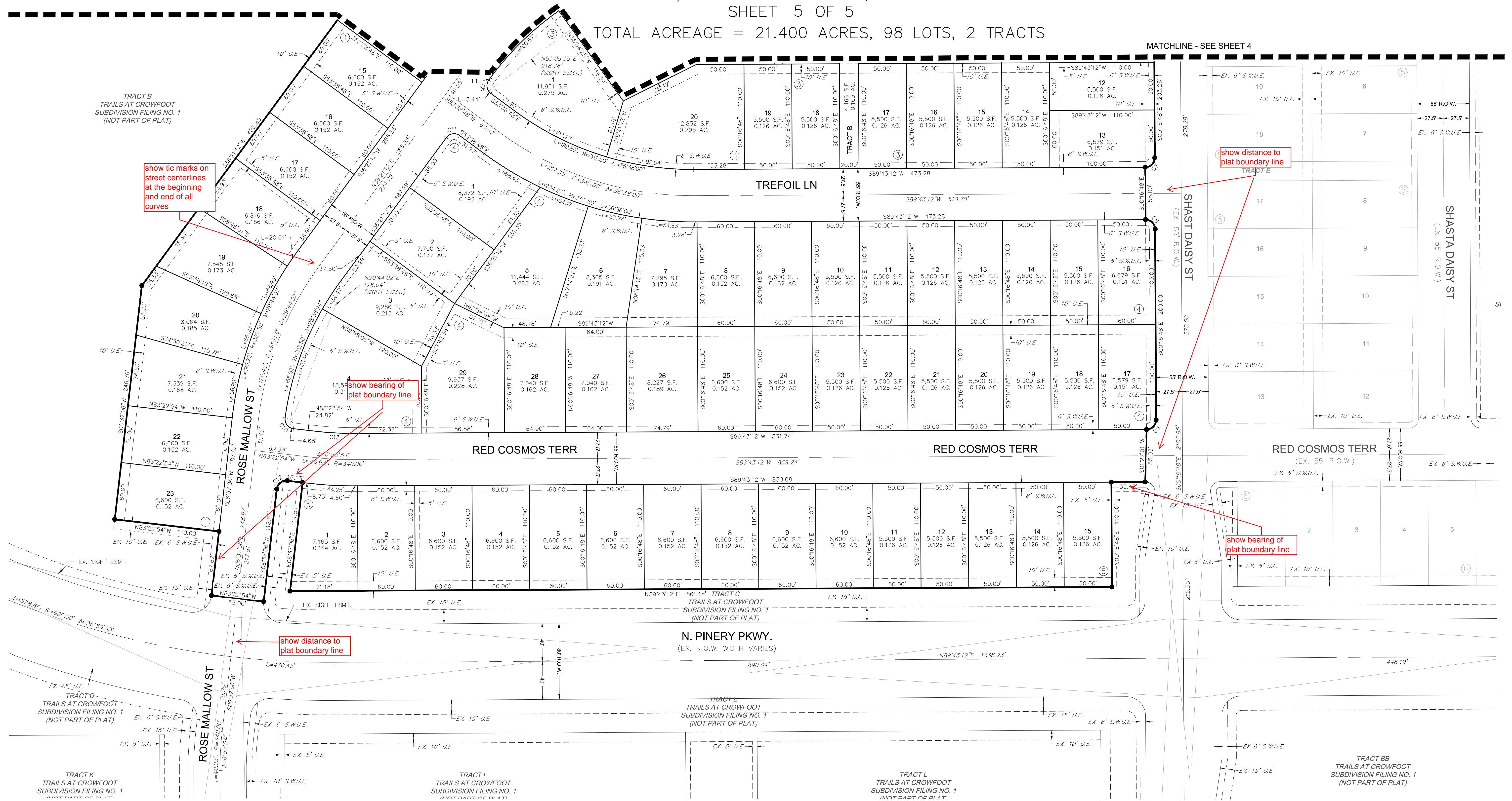


CURVE TABLE					
CURVE NO.	LENGTH	RADIUS	DELTA	CHORD DIRECTION	CHORD LENGTH
C1	15.71'	10.00'	90°00'00"	S82°15'14"W	14.14'
C2	15.71'	10.00'	90°00'00"	N44°43'12"E	14.14'
C3	15.71'	10.00'	90°00'00"	N45°16'48"W	14.14'
C4	15.71'	10.00'	90°00'00"	S45°16'48"E	14.14'
C5	15.71'	10.00'	90°00'00"	N44°43'12"E	14.14'

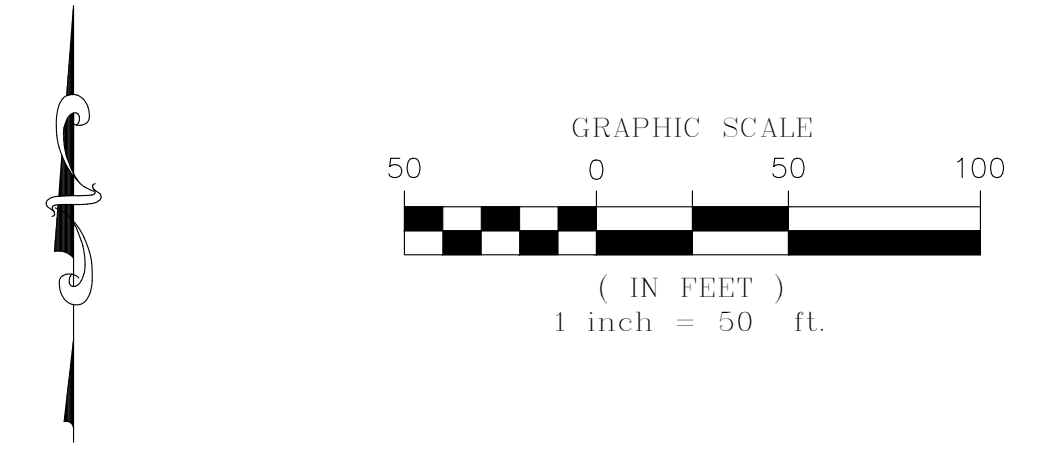
TRAILS AT CROWFOOT SUBDIVISION FILING NO. 3

A REPLAT OF TRACT O OF TRAILS AT CROWFOOT FILING NO. 1
 A PART OF SECTION 9, TOWNSHIP 7 SOUTH, RANGE 66 WEST OF THE 6th PRINCIPAL MERIDIAN,
 TOWN OF PARKER, COUNTY OF DOUGLAS, STATE OF COLORADO
 SHEET 5 OF 5

TOTAL ACREAGE = 21.400 ACRES, 98 LOTS, 2 TRACTS



LEGEND	
	FND. SECTION CORNER AS DESCRIBED
	R.O.W. RIGHT-OF-WAY
	S.W.U.E. SIDEWALK & UTILITY EASEMENT
	U.E. UTILITY EASEMENT
	D.U.E. DRAINAGE AND UTILITY EASEMENT
	A.E. ACCESS EASEMENT
	G.E. GAS EASEMENT
	EX U.E. EXISTING UTILITY EASEMENT
	○ FOUND REBAR & YELLOW PLASTIC CAP "LS 17666"
	● SET NO. 6 REBAR, 30" LONG, w/2" ALUMINUM CAP STAMPED CVL LS NO. 25369 UNLESS OTHERWISE NOTED



CURVE TABLE					
CURVE NO.	LENGTH	RADIUS	DELTA	CHORD DIRECTION	CHORD LENGTH
C1	15.71'	10.00'	90°00'00"	S82°15'14"W	14.14'
C2	15.71'	10.00'	90°00'00"	N44°43'12"E	14.14'
C3	15.71'	10.00'	90°00'00"	N45°16'48"W	14.14'
C4	15.71'	10.00'	90°00'00"	S45°16'48"E	14.14'
C5	15.71'	10.00'	90°00'00"	N44°43'12"E	14.14'
C6	15.71'	10.00'	90°00'00"	S8°38'48"E	14.14'
C7	15.71'	10.00'	90°00'00"	N44°43'12"E	14.14'
C8	15.71'	10.00'	90°00'00"	N45°16'48"W	14.14'
C9	15.71'	10.00'	90°00'00"	N44°43'12"E	14.14'
C10	15.91'	10.00'	91°08'42"	S37°48'33"E	14.28'
C11	15.71'	10.00'	90°00'00"	S81°21'12"W	14.14'
C12	15.71'	10.00'	90°00'00"	S51°37'06"W	14.14'
C13	37.62'	312.50'	6°53'54"	S86°49'51"E	37.60'

LINE TABLE		
LINE NO.	LENGTH	DIRECTION
L1	3.05'	S36°21'12"W