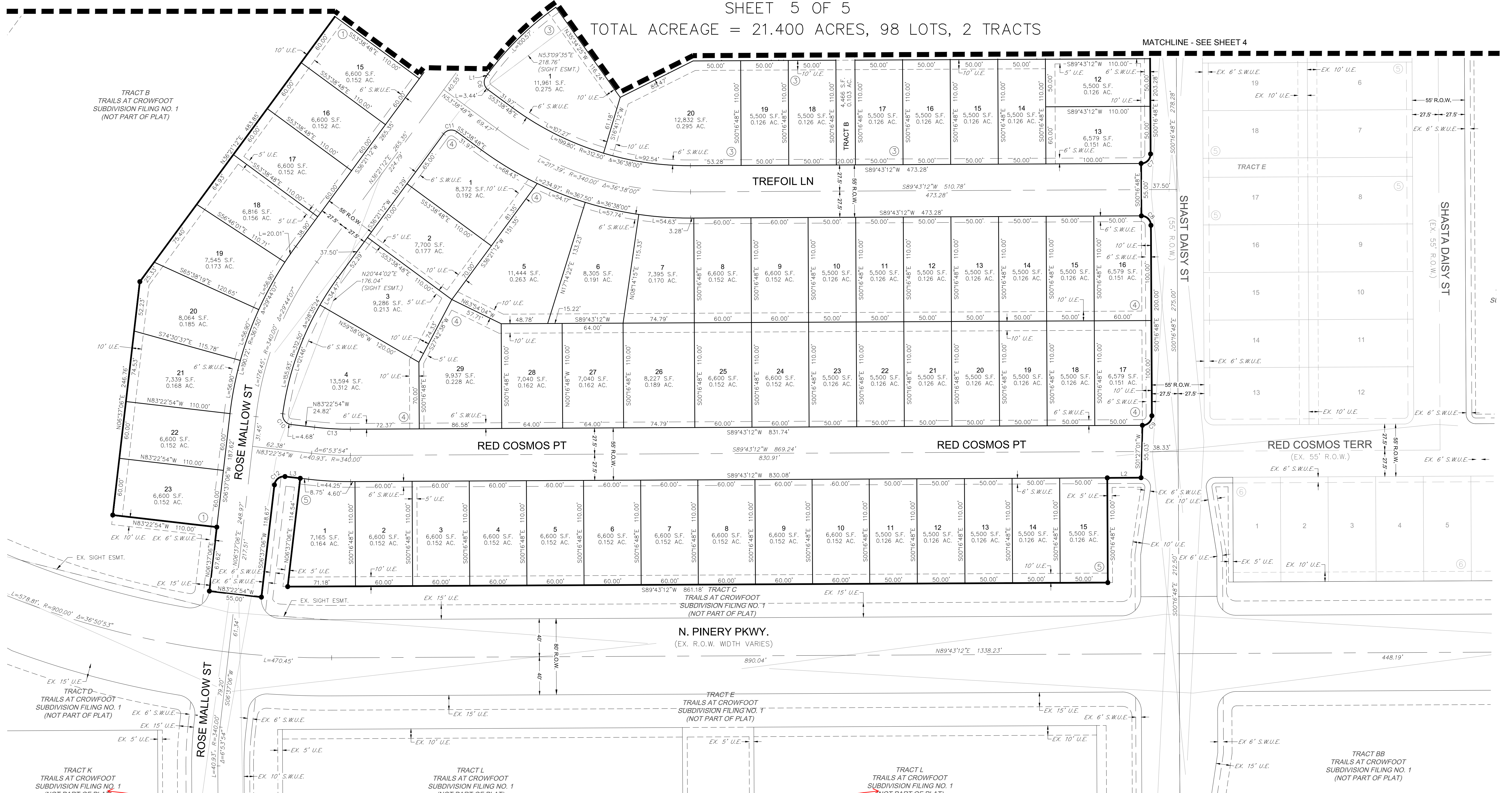


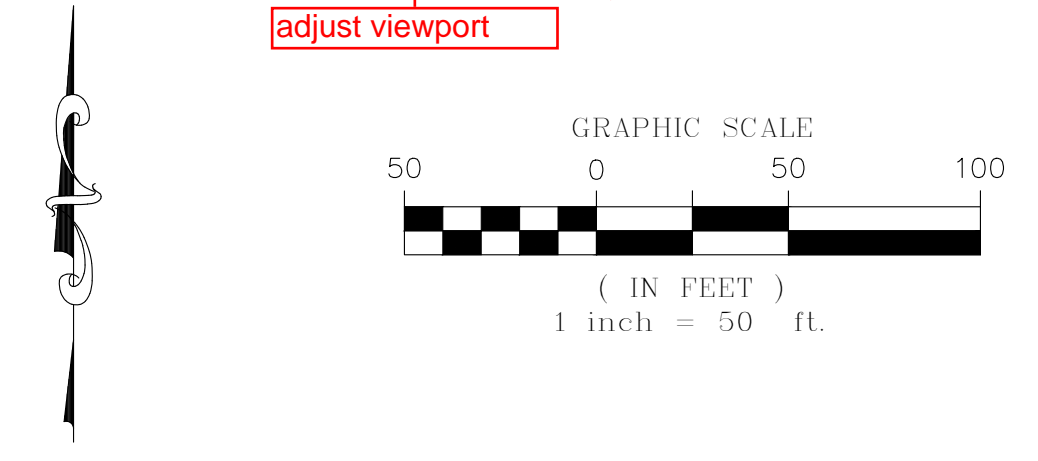
TRAILS AT CROWFOOT SUBDIVISION FILING NO. 3

A REPLAT OF TRACT O OF TRAILS AT CROWFOOT FILING NO. 1
 A PART OF SECTION 9, TOWNSHIP 7 SOUTH, RANGE 66 WEST OF THE 6th PRINCIPAL MERIDIAN,
 TOWN OF PARKER, COUNTY OF DOUGLAS, STATE OF COLORADO
 SHEET 5 OF 5

TOTAL ACREAGE = 21.400 ACRES, 98 LOTS, 2 TRACTS



| LEGEND | |
|--------|------------------------------------------------------------------------------------------------|
| | FND. SECTION CORNER AS DESCRIBED |
| | R.O.W. RIGHT-OF-WAY |
| | S.W.U.E. SIDEWALK & UTILITY EASEMENT |
| | U.E. UTILITY EASEMENT |
| | D.U.E. DRAINAGE AND UTILITY EASEMENT |
| | A.E. ACCESS EASEMENT |
| | G.E. GAS EASEMENT |
| | EX U.E. EXISTING UTILITY EASEMENT |
| | ○ FOUND REBAR & YELLOW PLASTIC CAP "LS 17666" |
| | ● SET NO. 6 REBAR, 30" LONG, w/2" ALUMINUM CAP STAMPED CVL LS NO. 25369 UNLESS OTHERWISE NOTED |



| CURVE TABLE | | | | | |
|-------------|--------|---------|-----------|-----------------|--------------|
| CURVE NO. | LENGTH | RADIUS | DELTA | CHORD DIRECTION | CHORD LENGTH |
| C1 | 15.71' | 10.00' | 90°00'00" | S82°15'14"W | 14.14' |
| C2 | 15.71' | 10.00' | 90°00'00" | N44°43'12"E | 14.14' |
| C3 | 15.71' | 10.00' | 90°00'00" | N45°16'48"W | 14.14' |
| C4 | 15.71' | 10.00' | 90°00'00" | S45°16'48"E | 14.14' |
| C5 | 15.71' | 10.00' | 90°00'00" | N44°43'12"E | 14.14' |
| C6 | 15.71' | 10.00' | 90°00'00" | S8°38'48"E | 14.14' |
| C7 | 15.71' | 10.00' | 90°00'00" | N44°43'12"E | 14.14' |
| C8 | 15.71' | 10.00' | 90°00'00" | N45°16'48"W | 14.14' |
| C9 | 15.71' | 10.00' | 90°00'00" | N44°43'12"E | 14.14' |
| C10 | 15.91' | 10.00' | 91°08'42" | S37°48'33"E | 14.28' |
| C11 | 15.71' | 10.00' | 90°00'00" | S81°21'12"W | 14.14' |
| C12 | 15.71' | 10.00' | 90°00'00" | S51°37'06"W | 14.14' |
| C13 | 37.62' | 312.50' | 6°53'54" | S86°49'51"E | 37.60' |

| LINE TABLE | | |
|------------|--------|-------------|
| LINE NO. | LENGTH | DIRECTION |
| L1 | 3.05' | S36°21'12"W |
| L2 | 35.48' | S89°43'12"W |
| L3 | 16.13' | N83°22'54"W |