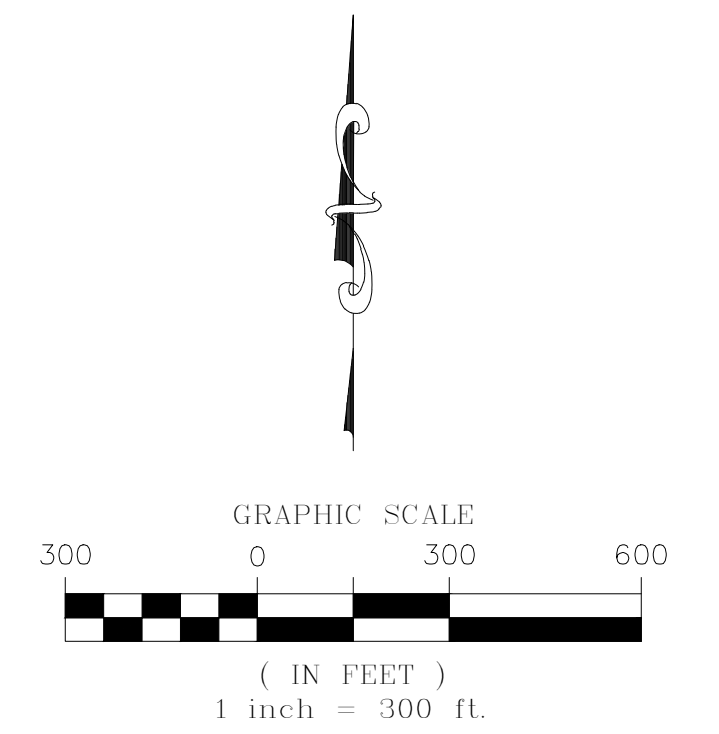


TRAILS AT CROWFOOT SUBDIVISION FILING NO. 5 ADDRESS PLAT

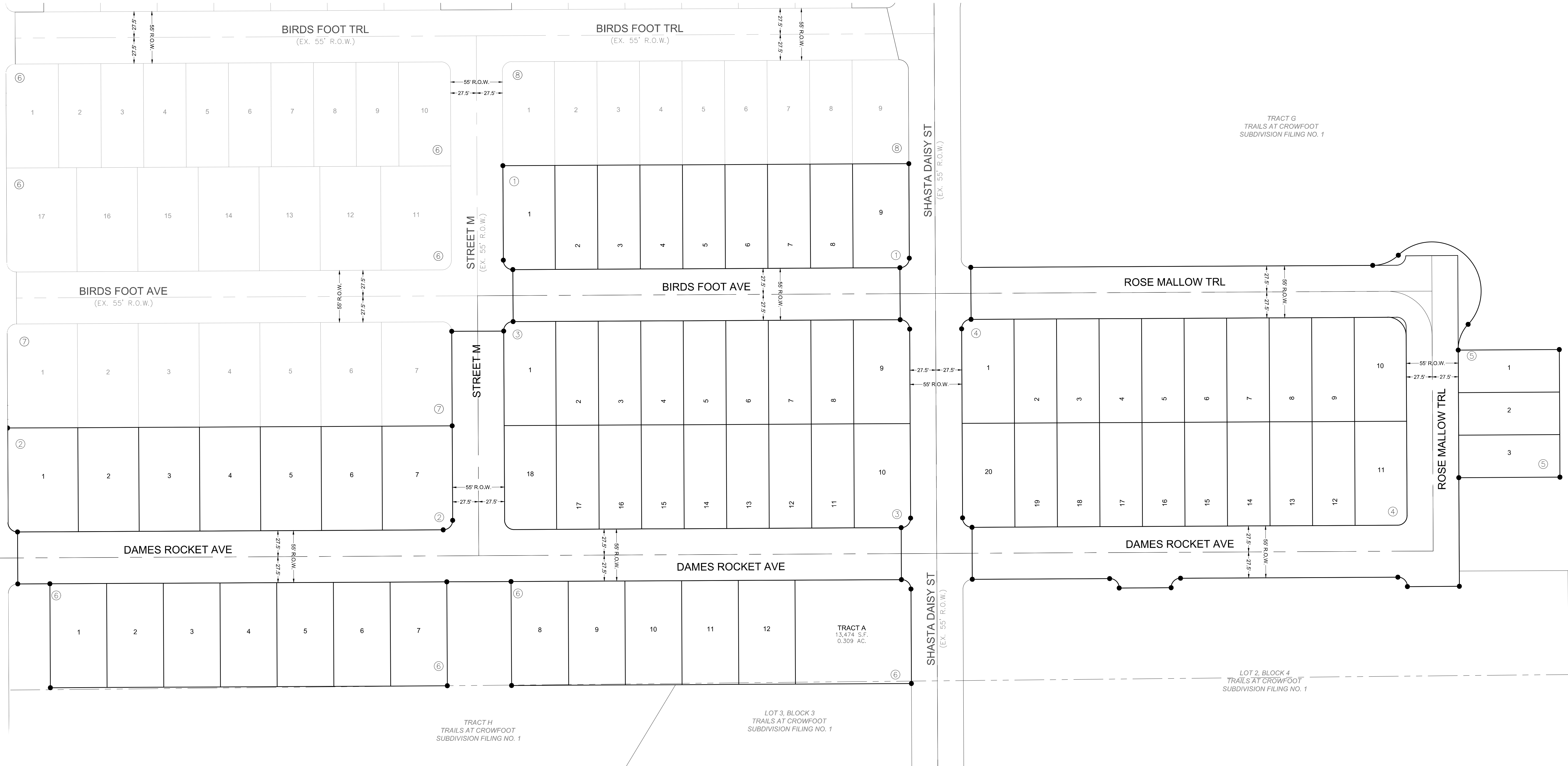
A RESUBDIVISION OF LOT 2, BLOCK 3 AND LOT 1, BLOCK 4 OF TRAILS AT CROWFOOT FILING NO. 1
A PART OF THE SECTIONS 4, 8 AND 9, TOWNSHIP 7 SOUTH, RANGE 66 WEST OF THE 6th PRINCIPAL MERIDIAN,
TOWN OF PARKER, COUNTY OF DOUGLAS, STATE OF COLORADO
SHEET 1 OF 2



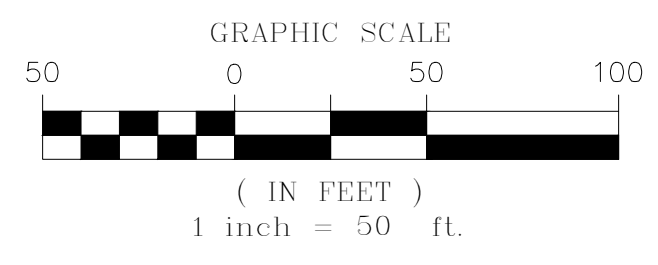
ENGINEER/SURVEYOR
CVL Consultants
of Colorado, Inc.
10333 E. Dry Creek Rd., Suite 240
Englewood, CO 80112
Tel: (720) 482-9526 / Fax: (720) 482-9546

TRAILS AT CROWFOOT SUBDIVISION FILING NO. 5 ADDRESS PLAT

A RESUBDIVISION OF LOT 2, BLOCK 3 AND LOT 1, BLOCK 4 OF TRAILS AT CROWFOOT FILING NO. 1
 A PART OF THE SECTIONS 4, 8 AND 9, TOWNSHIP 7 SOUTH, RANGE 66 WEST OF THE 6th PRINCIPAL MERIDIAN,
 TOWN OF PARKER, COUNTY OF DOUGLAS, STATE OF COLORADO
 SHEET 2 OF 2



LEGEND	
	FND. SECTION CORNER AS DESCRIBED
	R.O.W. RIGHT-OF-WAY
	S.W.U.E. SIDEWALK & UTILITY EASEMENT
	U.E. UTILITY EASEMENT
	D.U.E. DRAINAGE AND UTILITY EASEMENT
	A.E. ACCESS EASEMENT
	G.E. GAS EASEMENT
	EX U.E. EXISTING UTILITY EASEMENT



TRACT G
 TRAILS AT CROWFOOT
 SUBDIVISION FILING NO. 1

LOT 2, BLOCK 4
 TRAILS AT CROWFOOT
 SUBDIVISION FILING NO. 1

TRACT A
 13,474 S.F.
 0.309 AC.

TRACT H
 TRAILS AT CROWFOOT
 SUBDIVISION FILING NO. 1

LOT 3, BLOCK 3
 TRAILS AT CROWFOOT
 SUBDIVISION FILING NO. 1

ENGINEER/SURVEYOR
CVL Consultants
 of Colorado, Inc.
 10333 E. Dry Creek Rd., Suite 240
 Englewood, CO 80112
 Tel: (720) 482-9526 / Fax: (720) 482-9546