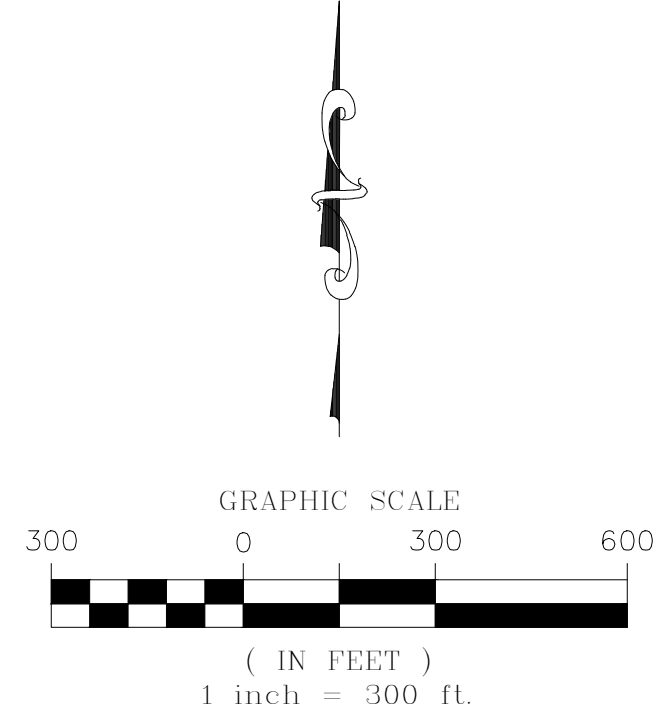


# TRAILS AT CROWFOOT SUBDIVISION FILING NO. 5 ADDRESS PLAT

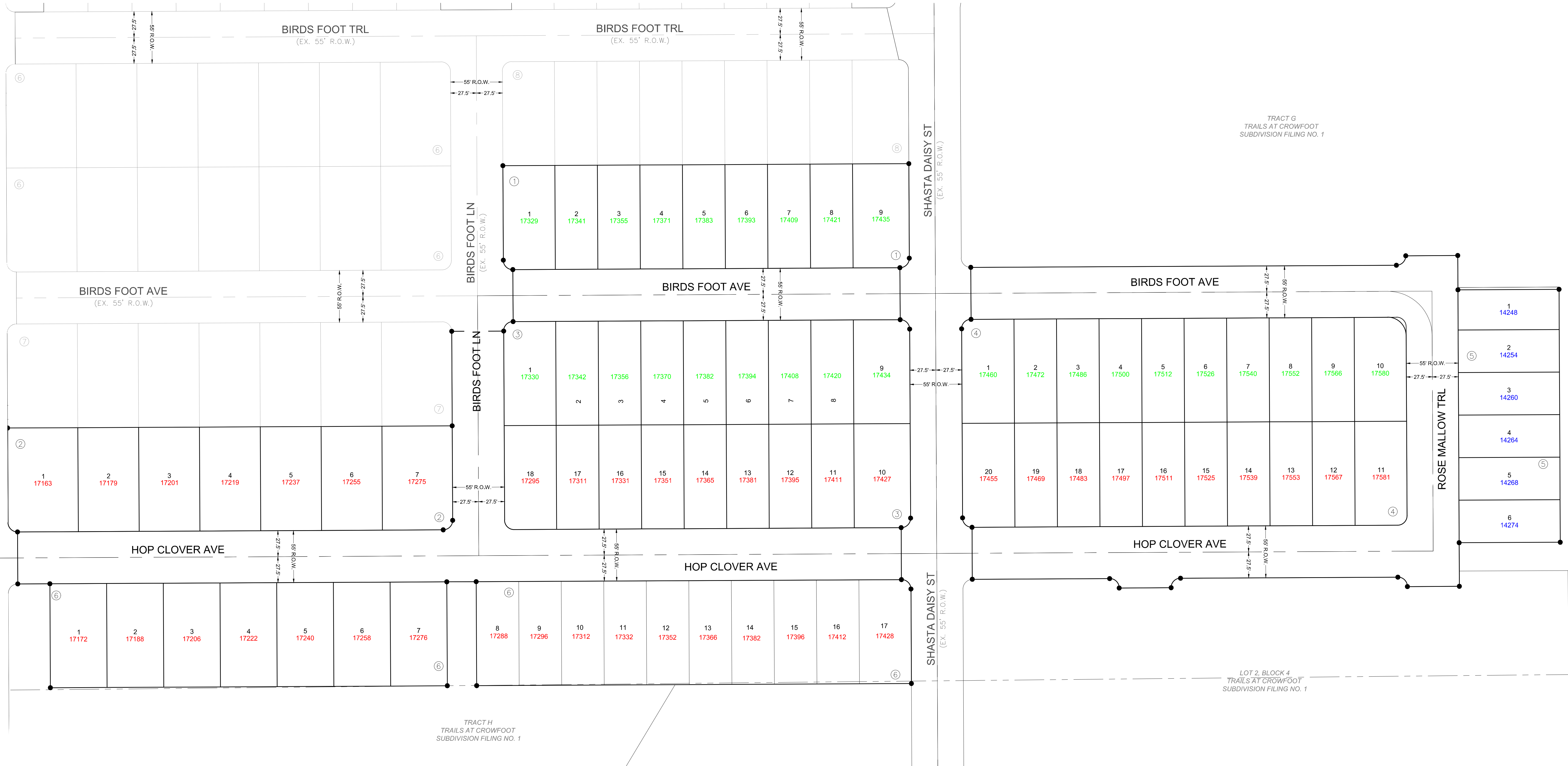
A RESUBDIVISION OF LOT 2, BLOCK 3 AND LOT 1, BLOCK 4 OF TRAILS AT CROWFOOT FILING NO. 1  
A PART OF THE SECTIONS 4, 8 AND 9, TOWNSHIP 7 SOUTH, RANGE 66 WEST OF THE 6th PRINCIPAL MERIDIAN,  
TOWN OF PARKER, COUNTY OF DOUGLAS, STATE OF COLORADO  
SHEET 1 OF 2



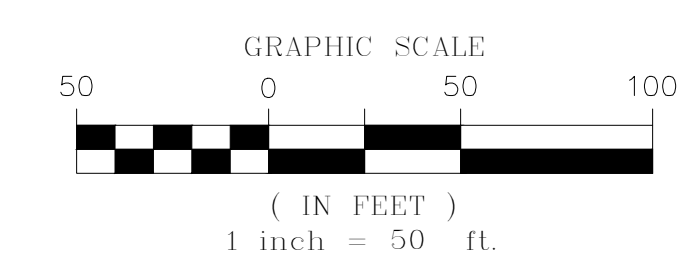
ENGINEER/SURVEYOR  
**CVL** Consultants  
of Colorado, Inc.  
10333 E. Dry Creek Rd., Suite 240  
Englewood, CO 80112  
Tel: (720) 482-9526 / Fax: (720) 482-9546

# TRAILS AT CROWFOOT SUBDIVISION FILING NO. 5 ADDRESS PLAT

A RESUBDIVISION OF LOT 2, BLOCK 3 AND LOT 1, BLOCK 4 OF TRAILS AT CROWFOOT FILING NO. 1  
 A PART OF THE SECTIONS 4, 8 AND 9, TOWNSHIP 7 SOUTH, RANGE 66 WEST OF THE 6th PRINCIPAL MERIDIAN,  
 TOWN OF PARKER, COUNTY OF DOUGLAS, STATE OF COLORADO  
 SHEET 2 OF 2



LEGEND	
	FND. SECTION CORNER AS DESCRIBED
	R.O.W. RIGHT-OF-WAY
	S.W.U.E. SIDEWALK & UTILITY EASEMENT
	U.E. UTILITY EASEMENT
	D.U.E. DRAINAGE AND UTILITY EASEMENT
	A.E. ACCESS EASEMENT
	G.E. GAS EASEMENT
	EX U.E. EXISTING UTILITY EASEMENT



TRACT G  
 TRAILS AT CROWFOOT  
 SUBDIVISION FILING NO. 1

LOT 2, BLOCK 4  
 TRAILS AT CROWFOOT  
 SUBDIVISION FILING NO. 1

ENGINEER/SURVEYOR  
**CVL** Consultants  
 of Colorado, Inc.  
 10333 E. Dry Creek Rd., Suite 240  
 Englewood, CO 80112  
 Tel: (720) 482-9526 / Fax: (720) 482-9546