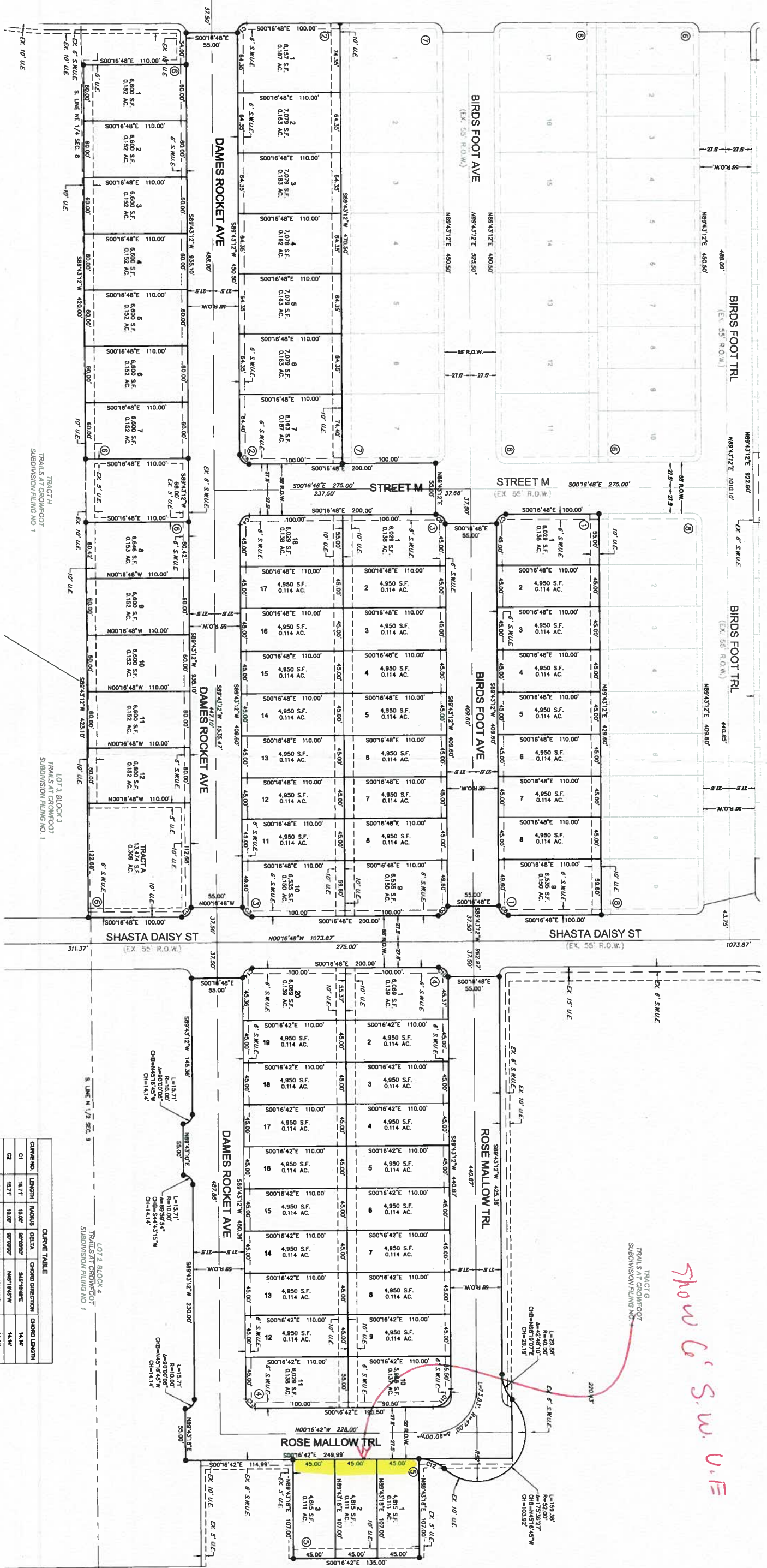


TRAILS AT CROWFOOT SUBDIVISION FILING NO. 5

A RESUBDIVISION OF LOT 2, BLOCK 3 AND LOT 1, BLOCK 4 OF TRAILS AT CROWFOOT FILING NO. 1
 A PART OF THE SECTIONS 4, 8 AND 9, TOWNSHIP 7 SOUTH, RANGE 66 WEST OF THE 6th PRINCIPAL MERIDIAN,
 TOWN OF PARKER, COUNTY OF DOUGLAS, STATE OF COLORADO
 SHEET 4 OF 4



LEGEND

+	FND. SECTION CORNER AS DESCRIBED
+	R.O.W. RIGHT-OF-WAY
+	S.W.U.E. SIDEWALK & UTILITY EASEMENT
+	U.E. UTILITY EASEMENT
+	D.U.E. DRAINAGE AND UTILITY EASEMENT
+	A.E. ACCESS EASEMENT
+	G.E. GAS EASEMENT
+	EX U.E. EXISTING UTILITY EASEMENT



CURVE TABLE

CURVE NO.	LENGTH	RAIUS	DELTA	CHORD	DIRECTION	CHORD LENGTH
C1	18.71'	10.00'	90.000°	54.678487E	14.14'	
C2	18.71'	10.00'	90.000°	54.678487W	14.14'	
C3	18.71'	10.00'	90.000°	54.678487E	14.14'	
C4	18.71'	10.00'	90.000°	54.678487E	14.14'	
C5	18.71'	10.00'	90.000°	54.678487E	14.14'	
C6	18.71'	10.00'	90.000°	54.678487E	14.14'	
C7	18.71'	10.00'	90.000°	54.678487E	14.14'	
C8	18.71'	10.00'	90.000°	54.678487E	14.14'	
C9	18.71'	10.00'	90.000°	54.678487E	14.14'	
C10	18.71'	10.00'	90.000°	54.678487E	14.14'	
C11	30.82'	18.00'	90.000°	54.678487W	27.88'	
C12	30.82'	18.00'	90.000°	54.678487E	27.88'	
C13	18.71'	10.00'	90.000°	54.678487E	14.14'	
C14	18.71'	10.00'	90.000°	54.678487E	14.14'	

ENGINEER/SURVEYOR
CVL Consultants
 of Colorado, Inc.
 10335 E. Dry Creek Rd., Suite 240
 Englewood, CO 80112
 Tel: (720) 482-5828 / Fax: (720) 482-5848