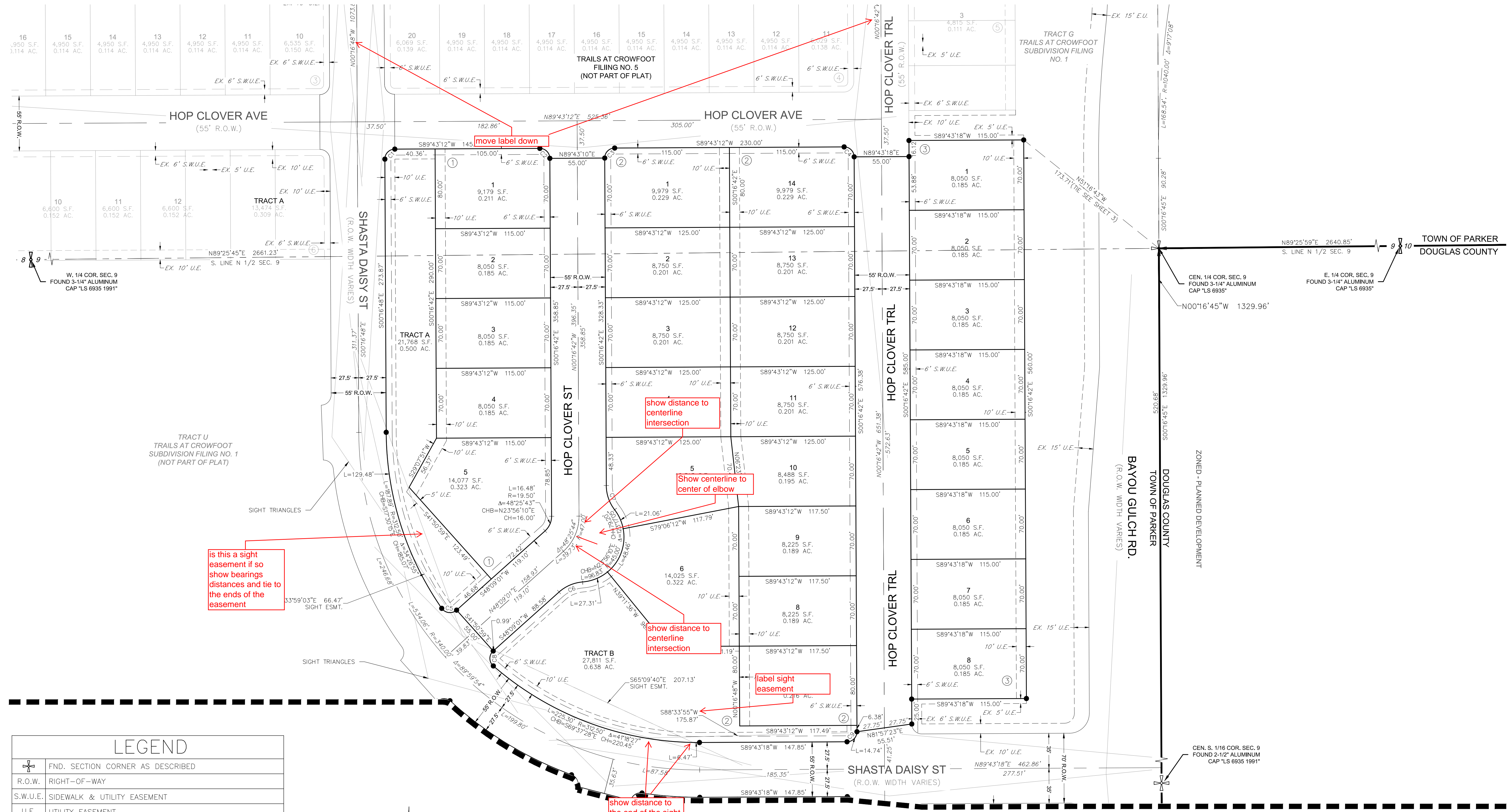


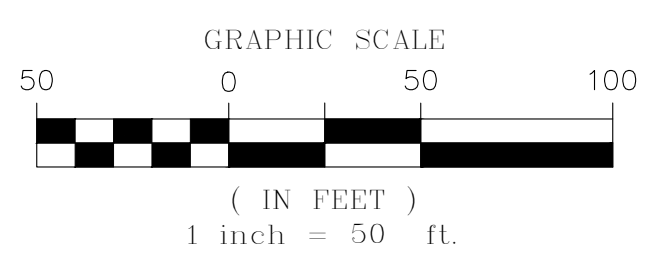
TRAILS AT CROWFOOT SUBDIVISION FILING NO. 6

A REPLAT OF TRACT N, TRACT R, AND TRACT X OF TRAILS AT CROWFOOT FILING NO. 1
 A PART OF SECTION 9, TOWNSHIP 7 SOUTH, RANGE 66 WEST OF THE 6th PRINCIPAL MERIDIAN,
 TOWN OF PARKER, COUNTY OF DOUGLAS, STATE OF COLORADO
 SHEET 4 OF 5

TOTAL ACREAGE = 14.782 ACRES, 51 LOTS 3 TRACT



LEGEND	
	FND. SECTION CORNER AS DESCRIBED
	R.O.W. RIGHT-OF-WAY
	S.W.U.E. SIDEWALK & UTILITY EASEMENT
	U.E. UTILITY EASEMENT
	D.U.E. DRAINAGE AND UTILITY EASEMENT
	A.E. ACCESS EASEMENT
	G.E. GAS EASEMENT
	EX U.E. EXISTING UTILITY EASEMENT
	○ FOUND REBAR & YELLOW PLASTIC CAP "LS 17666"
	● SET NO. 6 REBAR, 30" LONG, w/2" ALUMINUM CAP STAMPED C.V.L. NO. 25369 UNLESS OTHERWISE NOTED
	--- SIDEWALK & UTILITY EASEMENT LINE
	---- UTILITY EASEMENT LINE
	==== ROAD CENTERLINE



CURVE TABLE					
CURVE NO.	LENGTH	RADIUS	DELTA	CHORD DIRECTION	CHORD LENGTH
C1	15.71'	10.00'	90°00'00"	S44°43'12"W	14.14'
C2	15.71'	10.00'	90°00'06"	N45°16'45"W	14.14'
C3	15.71'	10.00'	89°59'54"	S44°43'15"W	14.14'
C4	15.71'	10.00'	90°00'06"	N45°16'45"W	14.14'
C5	16.95'	10.00'	97°07'16"	S83°17'21"E	14.99'
C6	26.13'	40.00'	37°25'41"	S66°51'52"W	25.67'
C7	26.13'	40.00'	37°25'41"	S18°59'32"E	25.67'
C8	16.95'	10.00'	97°07'16"	S0°24'37"E	14.99'
C9	15.71'	10.00'	90°00'00"	N44°43'18"E	14.14'