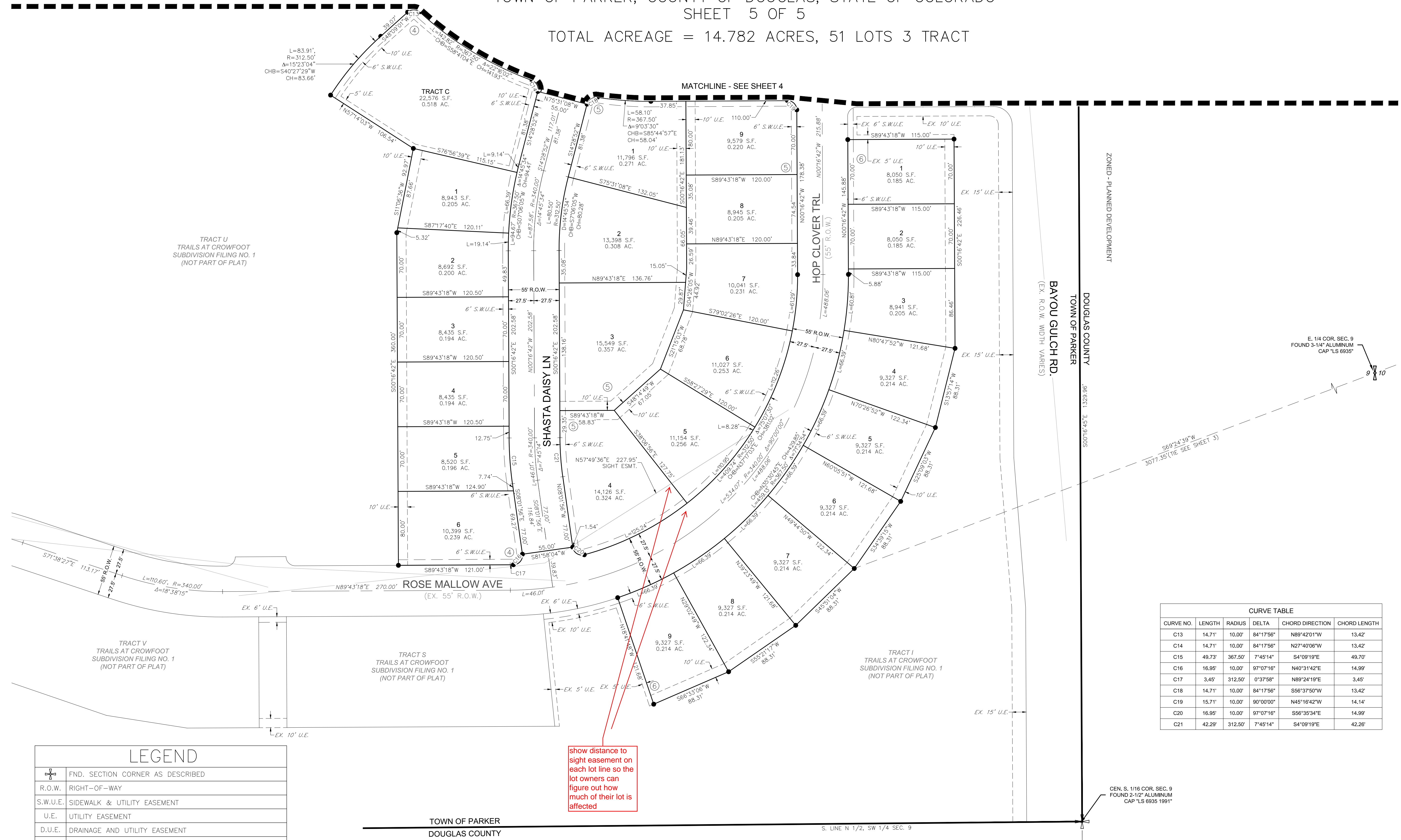


# TRAILS AT CROWFOOT SUBDIVISION FILING NO. 6

A REPLAT OF TRACT N, TRACT R, AND TRACT X OF TRAILS AT CROWFOOT FILING NO. 1  
 A PART OF SECTION 9, TOWNSHIP 7 SOUTH, RANGE 66 WEST OF THE 6th PRINCIPAL MERIDIAN,  
 TOWN OF PARKER, COUNTY OF DOUGLAS, STATE OF COLORADO

SHEET 5 OF 5

TOTAL ACREAGE = 14.782 ACRES, 51 LOTS 3 TRACT



CURVE NO.	LENGTH	RADIUS	DELTA	CHORD DIRECTION	CHORD LENGTH
C13	14.71'	10.00'	84°17'56"	N89°42'01"W	13.42'
C14	14.71'	10.00'	84°17'56"	N27°40'06"W	13.42'
C15	49.73'	367.50'	7°45'14"	S4°09'19"E	49.70'
C16	16.95'	10.00'	97°07'16"	N40°31'42"E	14.99'
C17	3.45'	312.50'	0°37'58"	N89°24'19"E	3.45'
C18	14.71'	10.00'	84°17'56"	S56°37'50"W	13.42'
C19	15.71'	10.00'	90°00'00"	N45°16'42"W	14.14'
C20	16.95'	10.00'	97°07'16"	S56°35'34"E	14.99'
C21	42.29'	312.50'	7°45'14"	S4°09'19"E	42.26'

LEGEND	
	FND. SECTION CORNER AS DESCRIBED
R.O.W.	RIGHT-OF-WAY
S.W.U.E.	SIDEWALK & UTILITY EASEMENT
U.E.	UTILITY EASEMENT
D.U.E.	DRAINAGE AND UTILITY EASEMENT
A.E.	ACCESS EASEMENT
G.E.	GAS EASEMENT
EX U.E.	EXISTING UTILITY EASEMENT
	FOUND REBAR & YELLOW PLASTIC CAP "LS 17666"
	SET NO. 6 REBAR, 30" LONG, w/2" ALUMINUM CAP STAMPED CIVL LS NO. 25369 UNLESS OTHERWISE NOTED
	SIDEWALK & UTILITY EASEMENT LINE
	UTILITY EASEMENT LINE
	ROAD CENTERLINE

show distance to sight easement on each lot line so the lot owners can figure out how much of their lot is affected

