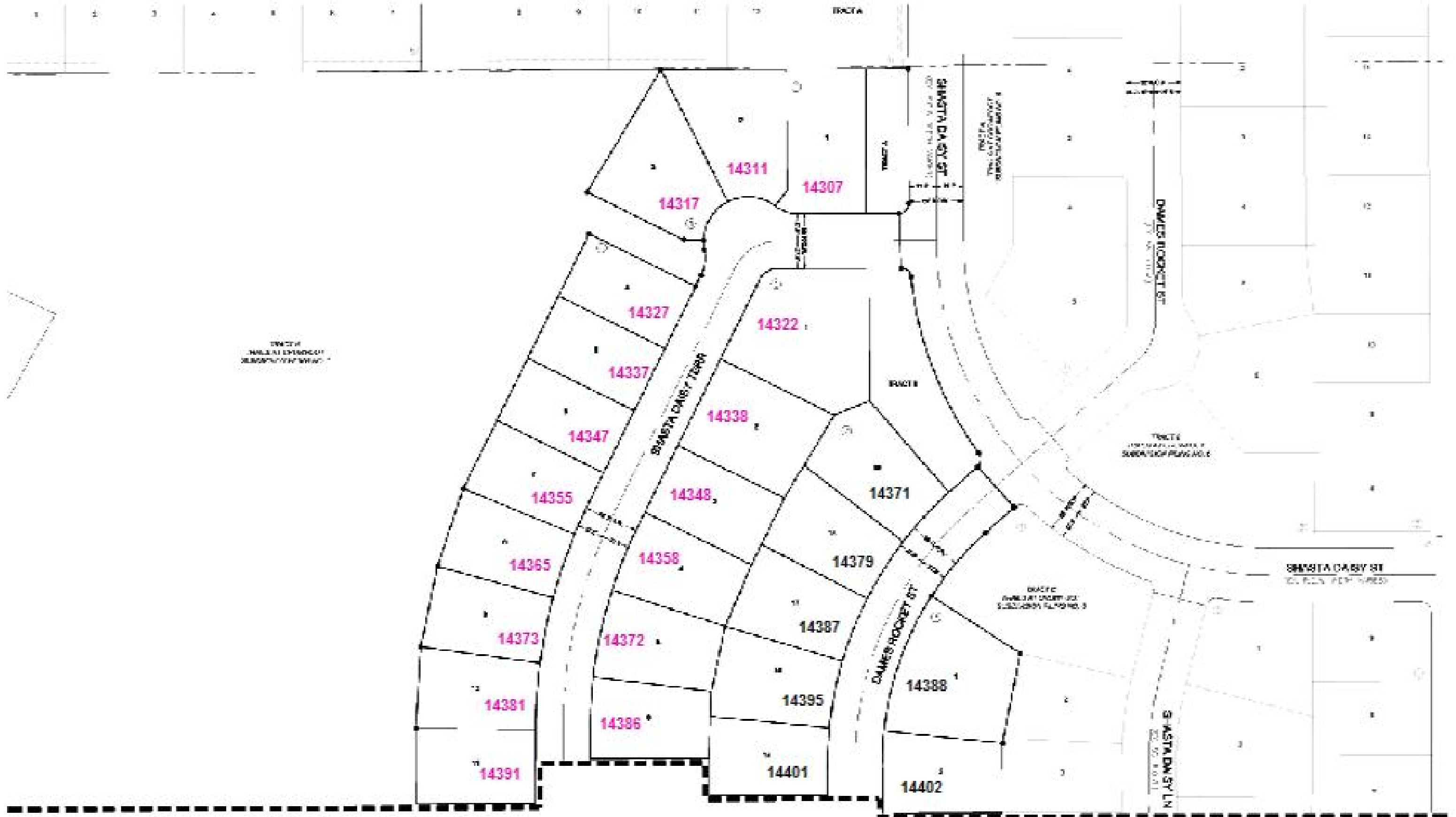


TRAILS AT CROWFOOT SUBDIVISION FILING NO. 7 ADDRESS PLAT

A RESUBDIVISION OF LOT 3, BLOCK 3, LOT 3, BLOCK 5, AND LOT 2, BLOCK 5 OF TRAILS AT CROWFOOT FILING NO. 1
 A PART OF THE SECTION 9, TOWNSHIP 7 SOUTH, RANGE 68 WEST OF THE 6TH PRINCIPAL MERIDIAN,
 TOWN OF PARKER, COUNTY OF DOUGLAS, STATE OF COLORADO
 SHEET 2 OF 3



LEGEND

+ 1/4" = 100' (1" = 100')

MATCHLINE SEE SHEET 1

TRAILS AT CROWFOOT SUBDIVISION FILING NO. 7 ADDRESS PLAT

A RESUBDIVISION OF LOT 3, BLOCK 3, LOT 3, BLOCK 5, AND LOT 2, BLOCK 5 OF TRAILS AT CROWFOOT FILING NO. 1
 A PART OF THE SECTION 9, TOWNSHIP 7 SOUTH, RANGE 66 WEST OF THE 6TH PRINCIPAL MERIDIAN,
 TOWN OF PARKER, COUNTY OF DOUGLAS, STATE OF COLORADO
 SHEET 3 OF 3

