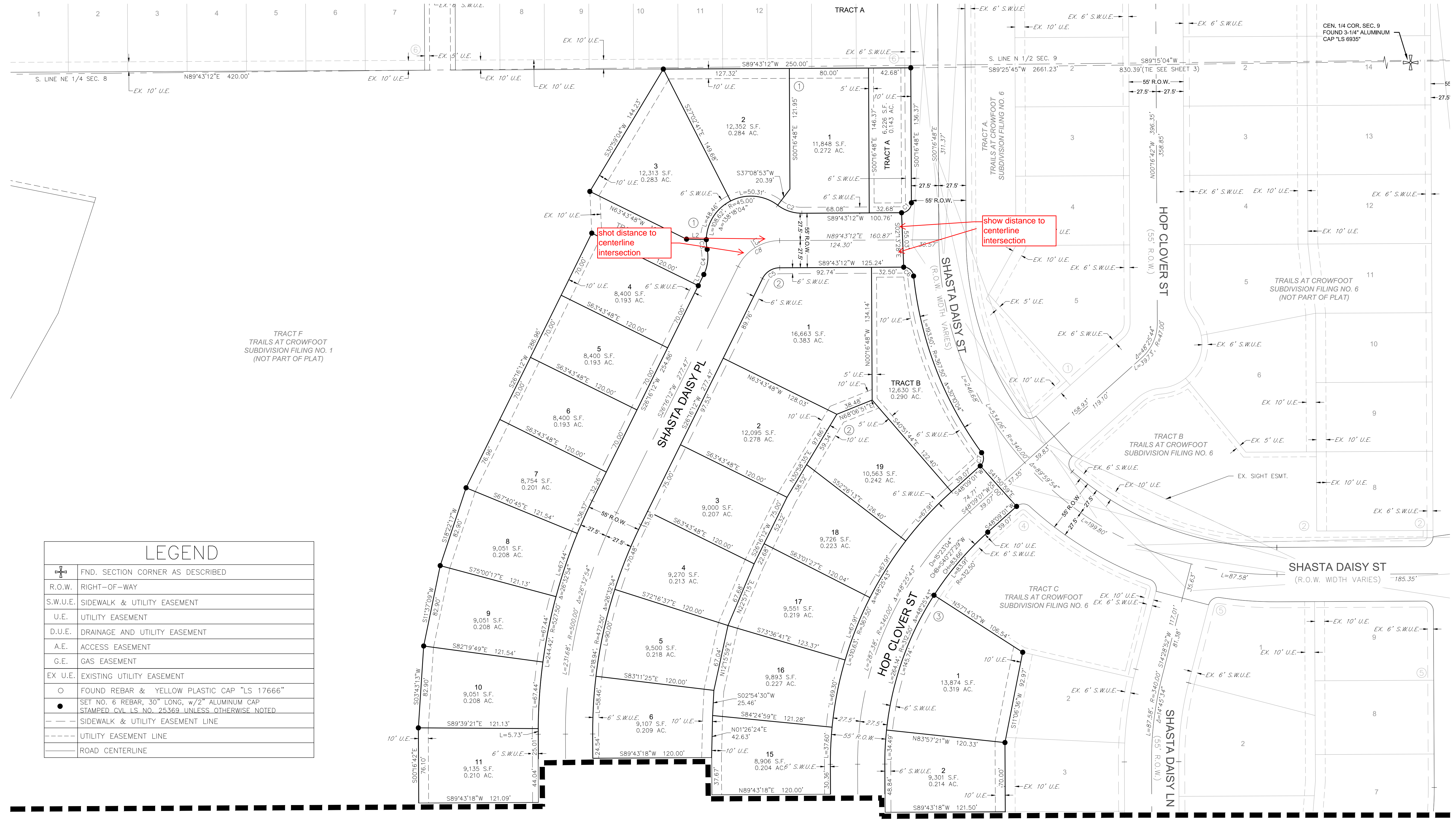


TRAILS AT CROWFOOT SUBDIVISION FILING NO. 7

A REPLAT OF TRACT S, TRACT U, AND TRACT V OF TRAILS AT CROWFOOT FILING NO. 1
 A PART OF THE SECTION 9, TOWNSHIP 7 SOUTH, RANGE 66 WEST OF THE 6th PRINCIPAL MERIDIAN,
 TOWN OF PARKER, COUNTY OF DOUGLAS, STATE OF COLORADO
 SHEET 4 OF 5

TOTAL ACREAGE = 13.378 ACRES, 49 LOTS 2 TRACTS



LEGEND	
	FND. SECTION CORNER AS DESCRIBED
	R.O.W. RIGHT-OF-WAY
	S.W.U.E. SIDEWALK & UTILITY EASEMENT
	U.E. UTILITY EASEMENT
	D.U.E. DRAINAGE AND UTILITY EASEMENT
	A.E. ACCESS EASEMENT
	G.E. GAS EASEMENT
	EX U.E. EXISTING UTILITY EASEMENT
	FOUND REBAR & YELLOW PLASTIC CAP "LS 17666"
	SET NO. 6 REBAR, 30" LONG, w/2" ALUMINUM CAP STAMPED CVL LS NO. 25369 UNLESS OTHERWISE NOTED
	SIDEWALK & UTILITY EASEMENT LINE
	UTILITY EASEMENT LINE
	ROAD CENTERLINE

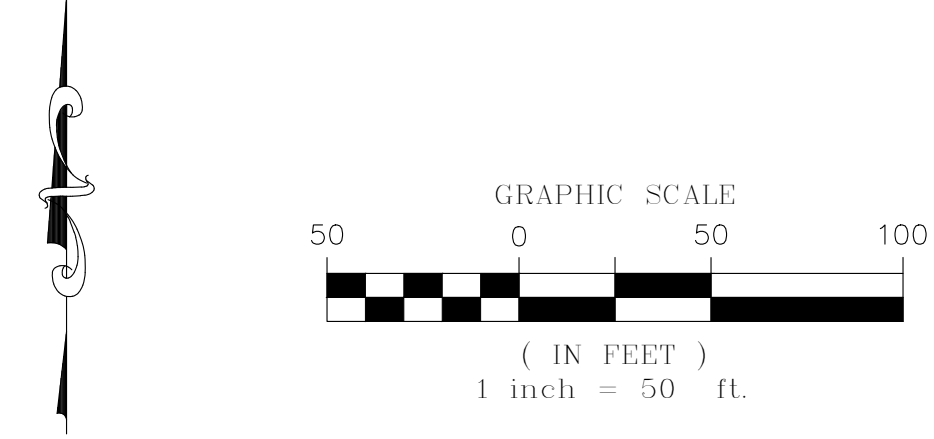
TRACT F
 TRAILS AT CROWFOOT
 SUBDIVISION FILING NO. 1
 (NOT PART OF PLAT)

CEN. 1/4 COR. SEC. 9
 FOUND 3-1/4" ALUMINUM
 CAP "LS 6935"

show distance to
 centerline
 intersection

shot distance to
 centerline
 intersection

MATCHLINE - SEE SHEET 5



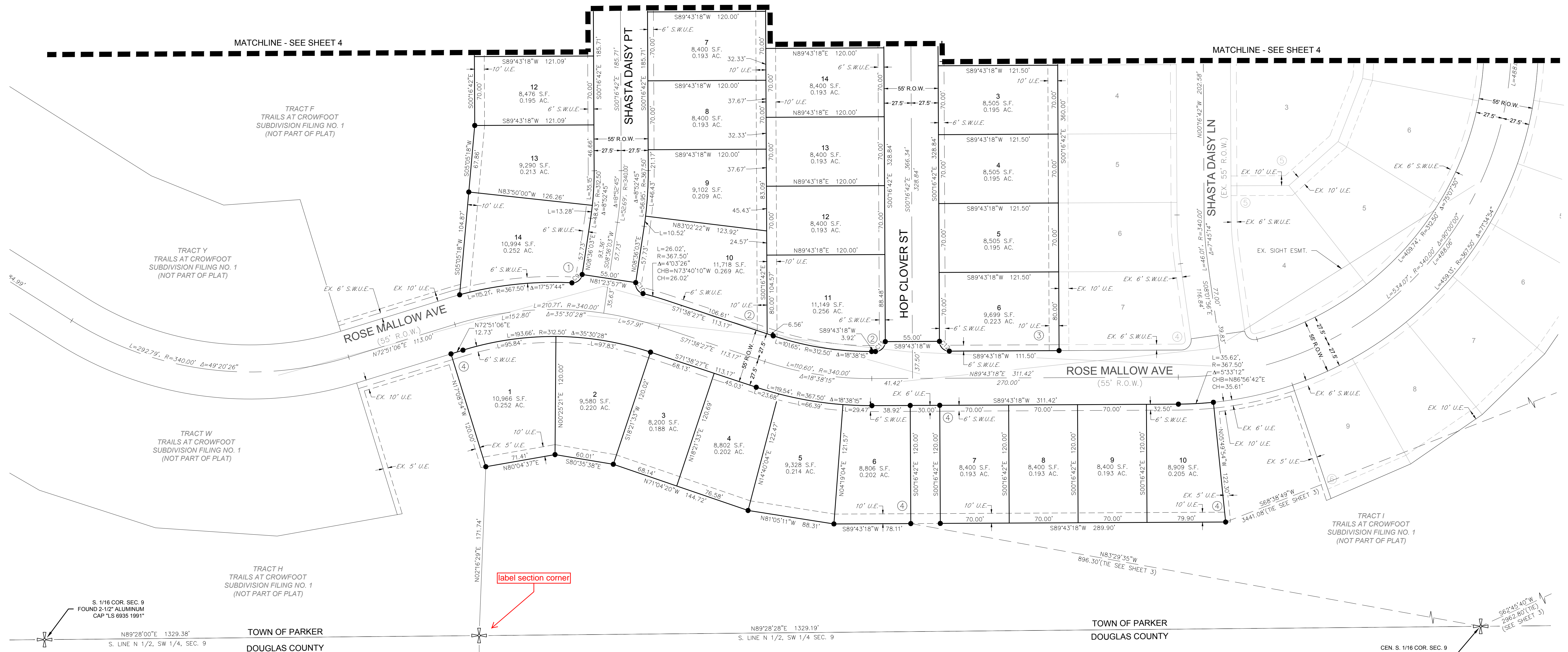
LINE TABLE		
LINE NO.	LENGTH	DIRECTION
L1	12.60'	S26°16'12"W
L2	20.00'	S88°36'45"E
L3	8.26'	N32°00'06"W

CURVE TABLE					
CURVE NO.	LENGTH	RADIUS	DELTA	CHORD DIRECTION	CHORD LENGTH
C1	15.71'	10.00'	90°00'00"	N44°43'12"E	14.14'
C2	26.13'	40.00'	37°25'41"	S71°33'58"E	25.67'
C3	9.85'	45.00'	12°32'44"	N4°53'07"W	9.83'
C4	26.13'	40.00'	37°25'41"	N7°33'22"E	25.67'
C5	21.59'	19.50'	63°26'59"	S57°59'42"W	20.51'
C6	14.71'	10.00'	84°17'57"	N48°07'50"W	13.42'
C7	14.71'	10.00'	84°17'56"	N6°00'03"E	13.42'
C8	52.05'	47.00'	63°26'59"	S57°59'42"W	49.43'

TRAILS AT CROWFOOT SUBDIVISION FILING NO. 7

A REPLAT OF TRACT S, TRACT U, AND TRACT V OF TRAILS AT CROWFOOT FILING NO. 1
 A PART OF THE SECTION 9, TOWNSHIP 7 SOUTH, RANGE 66 WEST OF THE 6th PRINCIPAL MERIDIAN,
 TOWN OF PARKER, COUNTY OF DOUGLAS, STATE OF COLORADO
 SHEET 5 OF 5

TOTAL ACREAGE = 13.378 ACRES, 49 LOTS 2 TRACTS



8 1/16 COR. SEC. 9
 FOUND 2-1/2" ALUMINUM
 CAP "LS 6935 1991"
 N89°28'00"E 1329.38'
 S. LINE N 1/2, SW 1/4, SEC. 9

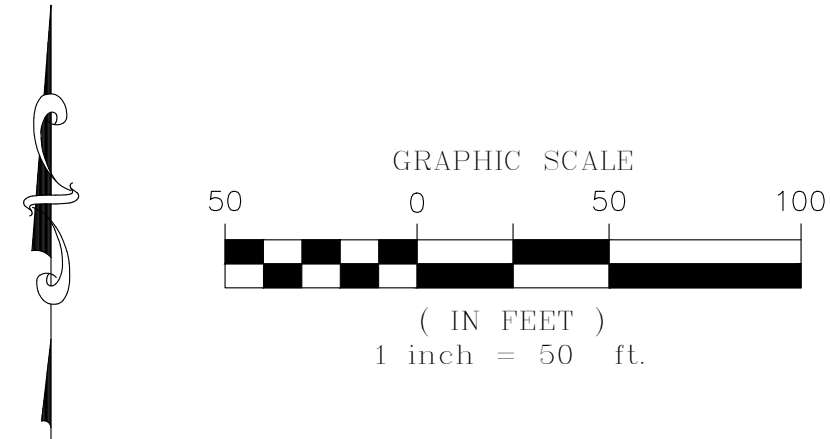
TOWN OF PARKER
 DOUGLAS COUNTY

N89°28'28"E 1329.19'
 S. LINE N 1/2, SW 1/4, SEC. 9

TOWN OF PARKER
 DOUGLAS COUNTY

GEN. S. 1/16 COR. SEC. 9
 FOUND 2-1/2" ALUMINUM
 CAP "LS 6935 1991"
 S82°43'40"W
 7962.80'(THE SEE SHEET 3)

LEGEND	
	FND. SECTION CORNER AS DESCRIBED
	R.O.W. RIGHT-OF-WAY
	S.W.U.E. SIDEWALK & UTILITY EASEMENT
	U.E. UTILITY EASEMENT
	D.U.E. DRAINAGE AND UTILITY EASEMENT
	A.E. ACCESS EASEMENT
	G.E. GAS EASEMENT
	EX U.E. EXISTING UTILITY EASEMENT
	FOUND REBAR & YELLOW PLASTIC CAP "LS 17666"
	SET NO. 6 REBAR, 30" LONG, w/2" ALUMINUM CAP STAMPED CVL LS NO. 25369 UNLESS OTHERWISE NOTED
	SIDEWALK & UTILITY EASEMENT LINE
	UTILITY EASEMENT LINE
	ROAD CENTERLINE



CURVE TABLE					
CURVE NO.	LENGTH	RADIUS	DELTA	CHORD DIRECTION	CHORD LENGTH
C8	52.05'	47.00'	63°26'59"	S57°59'42"W	48.43'
C9	14.71'	10.00'	84°17'56"	N50°45'01"E	13.42'
C10	14.71'	10.00'	84°17'56"	S33°32'55"E	13.42'
C11	15.71'	10.00'	90°00'00"	N44°43'18"E	14.14'

ZONED - AGRICULTURAL ONE