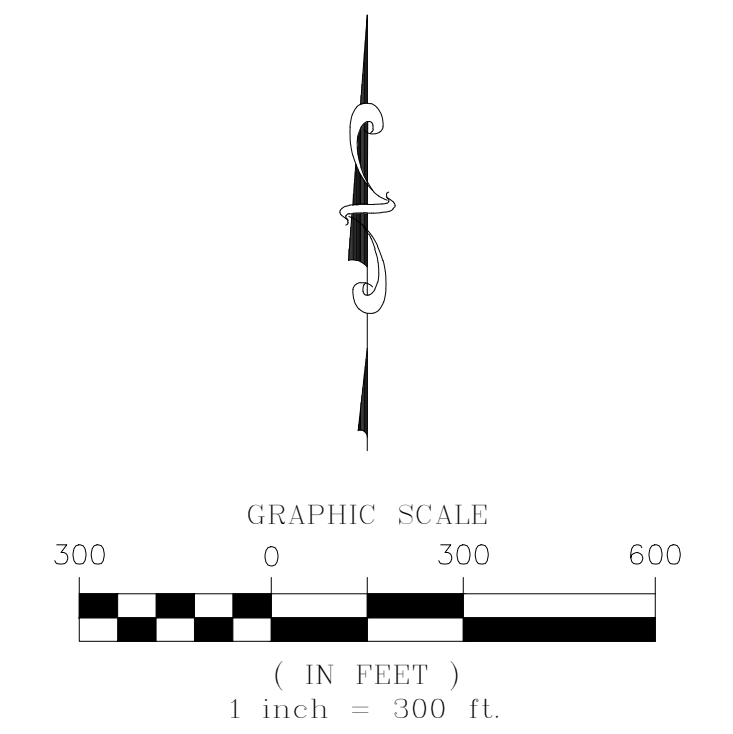
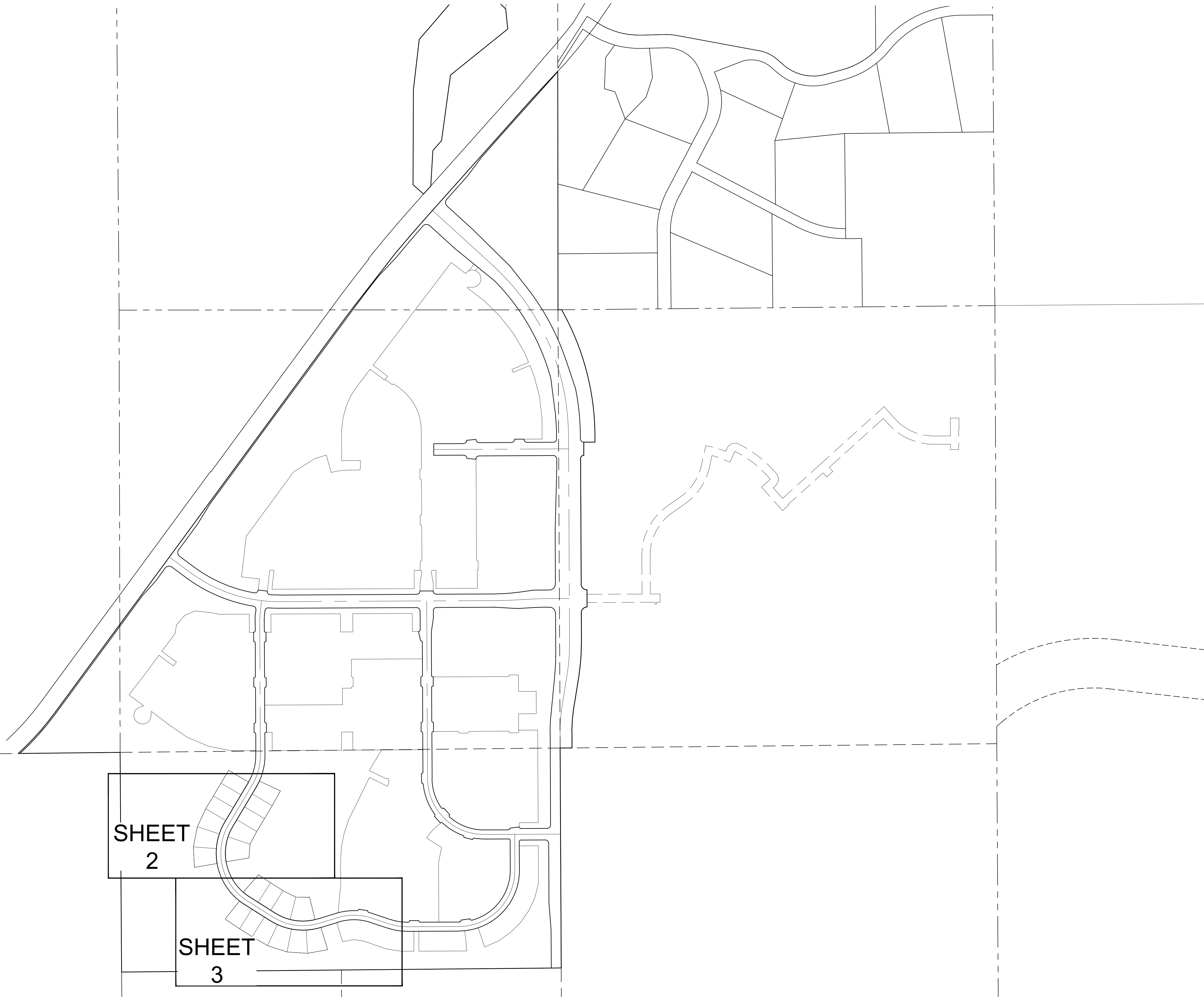


TRAILS AT CROWFOOT SUBDIVISION FILING NO. 8 ADDRESS PLAT

A RESUBDIVISION OF LOT 2, BLOCK 2; LOT 3, BLOCK 2; LOT 4, BLOCK 2; LOT 5, BLOCK 2; LOT 5, BLOCK 3; AND LOT 6, BLOCK 3 OF TRAILS AT CROWFOOT FILING NO. 1
A PART OF THE SECTION 9, TOWNSHIP 7 SOUTH, RANGE 66 WEST OF THE 6th PRINCIPAL MERIDIAN,
TOWN OF PARKER, COUNTY OF DOUGLAS, STATE OF COLORADO
SHEET 1 OF 3



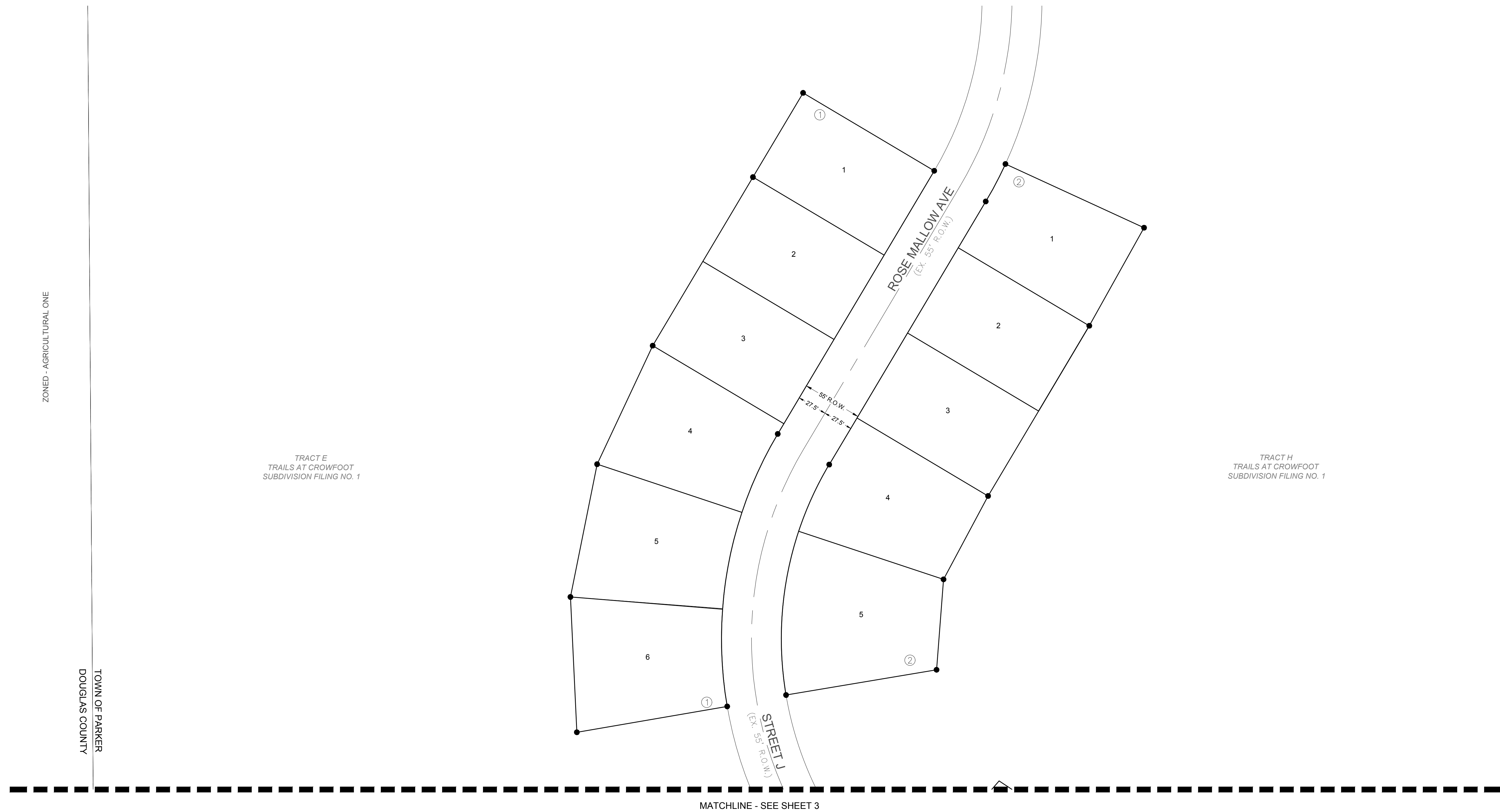
SHEET
2

SHEET
3

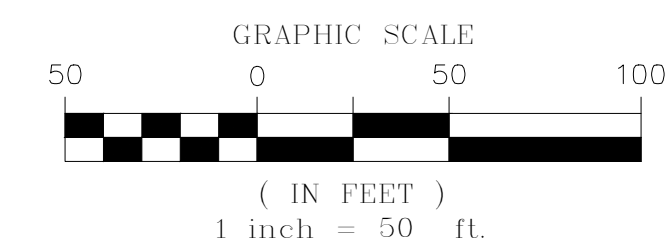
ENGINEER/SURVEYOR
CVL Consultants
of Colorado, Inc.
10333 E. Dry Creek Rd., Suite 240
Englewood, CO 80112
Tel: (720) 482-9526 / Fax: (720) 482-9546

TRAILS AT CROWFOOT SUBDIVISION FILING NO. 8 ADDRESS PLAT

A RESUBDIVISION OF LOT 2, BLOCK 2; LOT 3, BLOCK 2; LOT 4, BLOCK 2; LOT 5, BLOCK 2; LOT 5, BLOCK 3; AND LOT 6, BLOCK 3 OF TRAILS AT CROWFOOT FILING NO. 1
 A PART OF THE SECTION 9, TOWNSHIP 7 SOUTH, RANGE 66 WEST OF THE 6th PRINCIPAL MERIDIAN,
 TOWN OF PARKER, COUNTY OF DOUGLAS, STATE OF COLORADO
 SHEET 2 OF 3



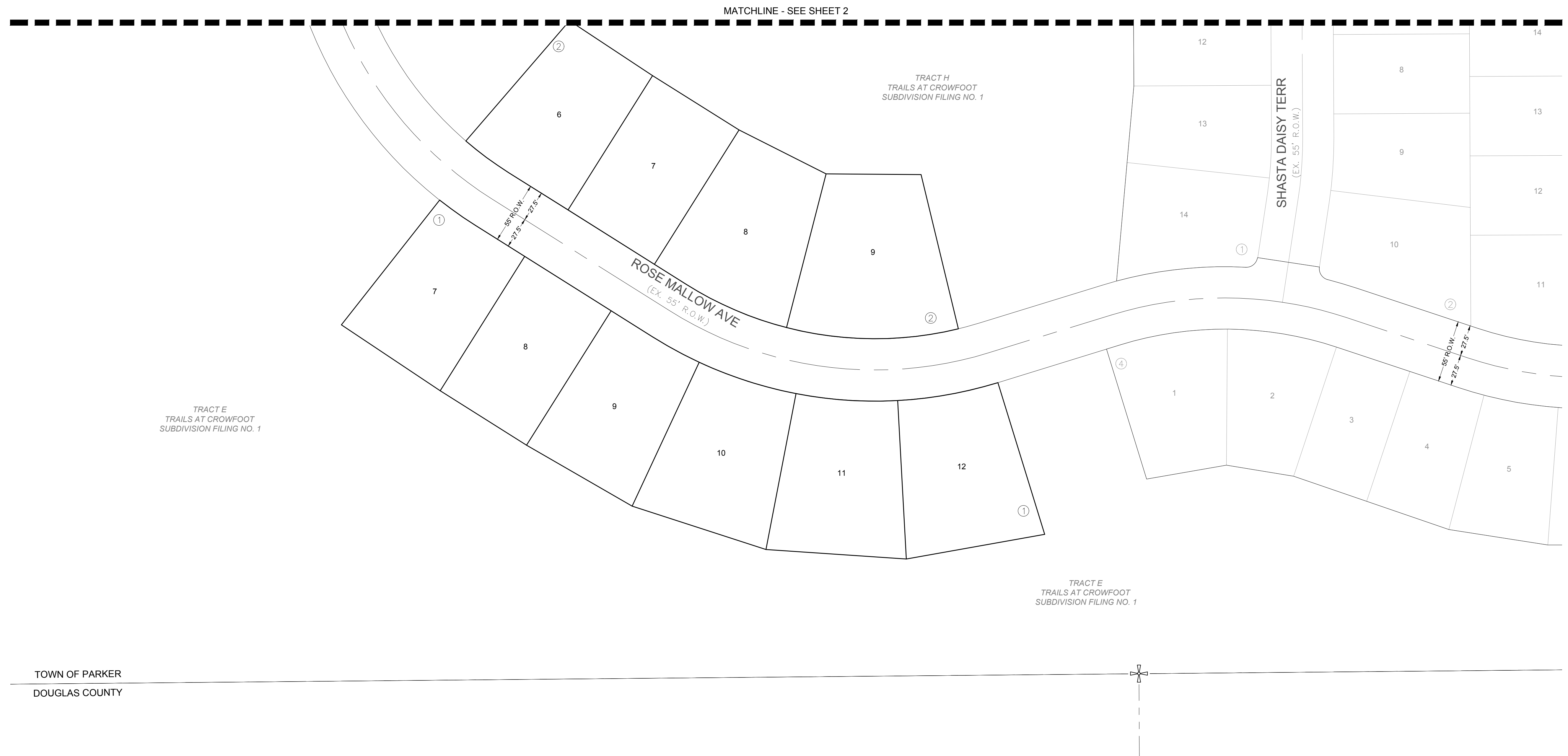
LEGEND	
	FND. SECTION CORNER AS DESCRIBED
	R.O.W. RIGHT-OF-WAY
	S.W.U.E. SIDEWALK & UTILITY EASEMENT
	U.E. UTILITY EASEMENT
	EX U.E. EXISTING UTILITY EASEMENT



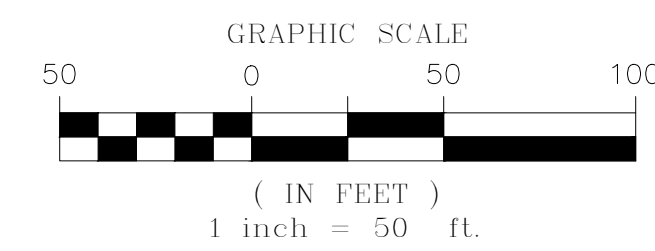
ENGINEER/SURVEYOR
CVL Consultants
 of Colorado, Inc.
 10333 E. Dry Creek Rd., Suite 240
 Englewood, CO 80112
 Tel: (720) 482-9526 / Fax: (720) 482-9546

TRAILS AT CROWFOOT SUBDIVISION FILING NO. 8 ADDRESS PLAT

A RESUBDIVISION OF LOT 2, BLOCK 2; LOT 3, BLOCK 2; LOT 4, BLOCK 2; LOT 5, BLOCK 2; LOT 5, BLOCK 3; AND LOT 6, BLOCK 3 OF TRAILS AT CROWFOOT FILING NO. 1
 A PART OF THE SECTION 9, TOWNSHIP 7 SOUTH, RANGE 66 WEST OF THE 6th PRINCIPAL MERIDIAN,
 TOWN OF PARKER, COUNTY OF DOUGLAS, STATE OF COLORADO
 SHEET 3 OF 3



LEGEND	
	FND. SECTION CORNER AS DESCRIBED
	R.O.W. RIGHT-OF-WAY
	S.W.U.E. SIDEWALK & UTILITY EASEMENT
	U.E. UTILITY EASEMENT
	EX U.E. EXISTING UTILITY EASEMENT



ENGINEER/SURVEYOR
CVL Consultants
 of Colorado, Inc.
 10333 E. Dry Creek Rd., Suite 240
 Englewood, CO 80112
 Tel: (720) 482-9526 / Fax: (720) 482-9546