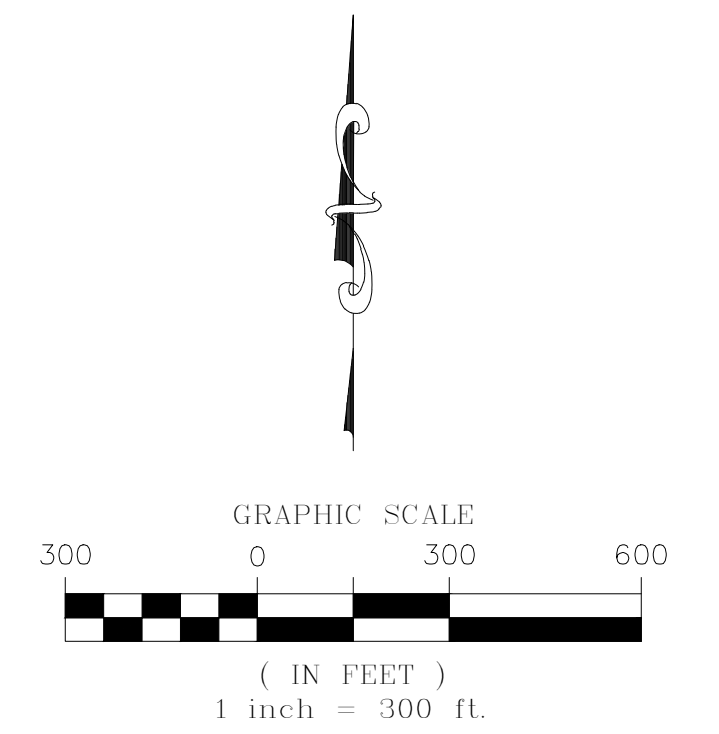
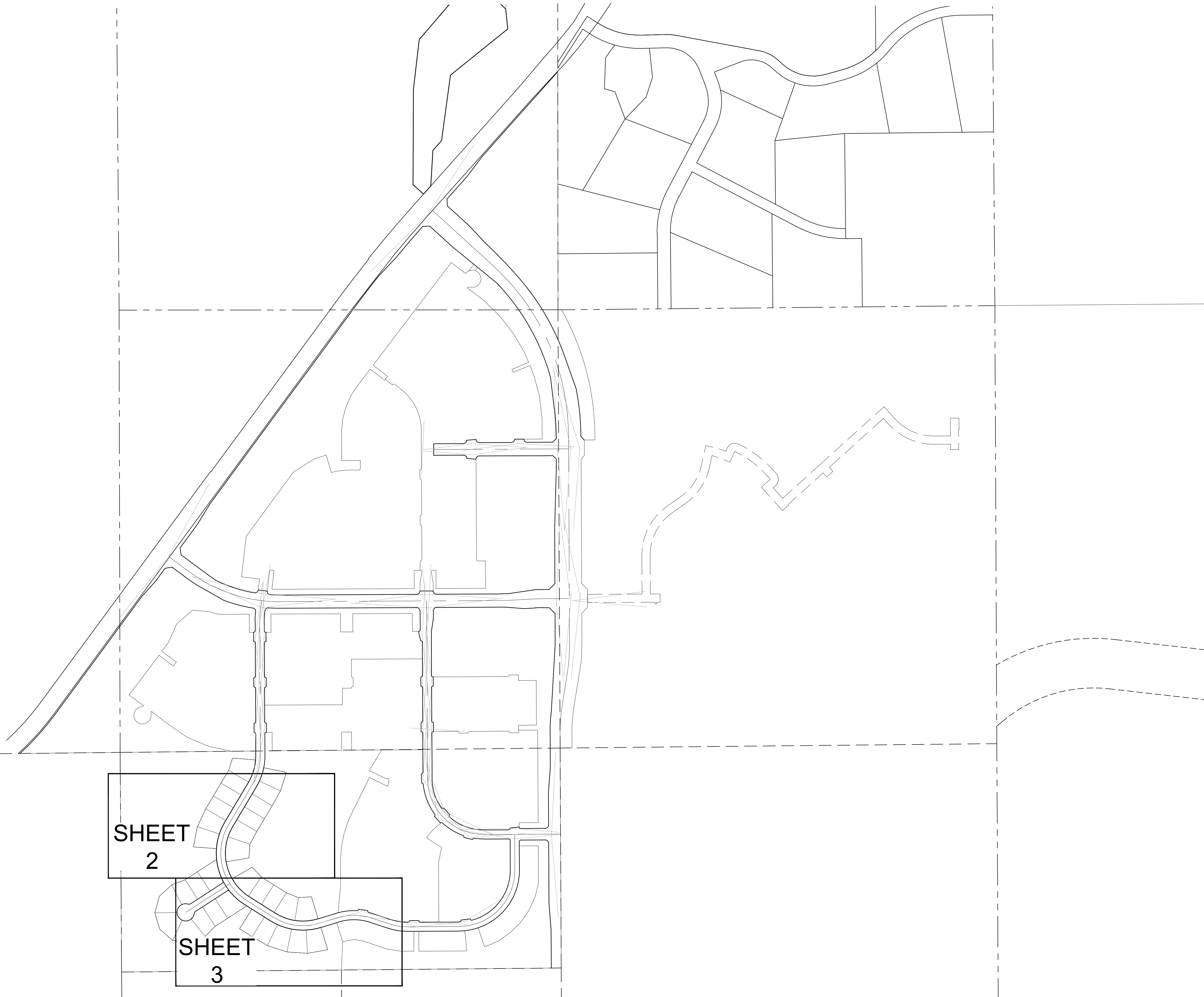


# TRAILS AT CROWFOOT SUBDIVISION FILING NO. 8 ADDRESS PLAT

A RESUBDIVISION OF LOT 2, BLOCK 2; LOT 3, BLOCK 2; LOT 4, BLOCK 2; LOT 5, BLOCK 2; LOT 5, BLOCK 3; AND LOT 6, BLOCK 3 OF TRAILS AT CROWFOOT FILING NO. 1  
A PART OF THE SECTION 9, TOWNSHIP 7 SOUTH, RANGE 66 WEST OF THE 6th PRINCIPAL MERIDIAN,  
TOWN OF PARKER, COUNTY OF DOUGLAS, STATE OF COLORADO  
SHEET 1 OF 3



SHEET  
2

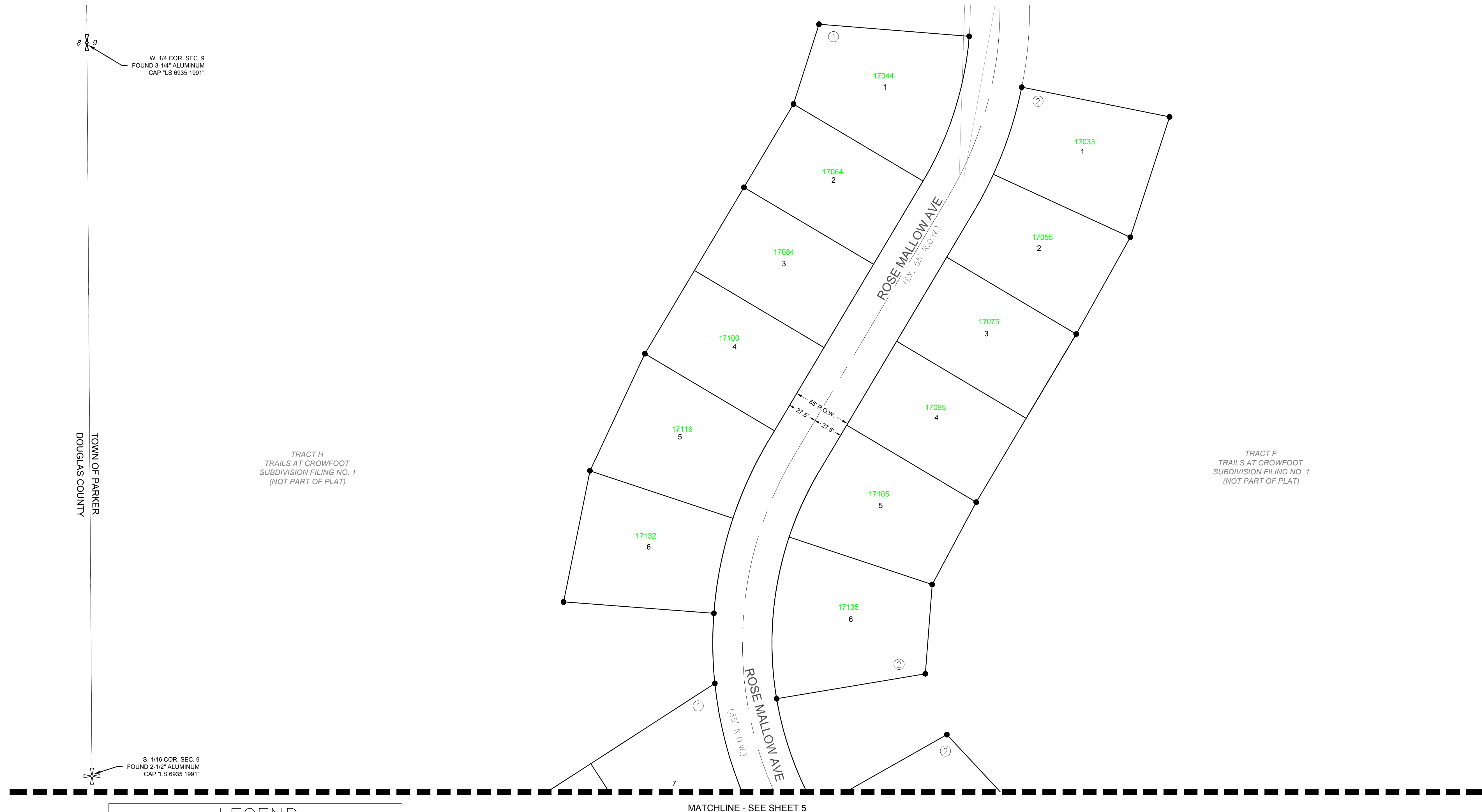
SHEET  
3

ENGINEER/SURVEYOR  
**CVL** Consultants  
of Colorado, Inc.  
10333 E. Dry Creek Rd., Suite 240  
Englewood, CO 80112  
Tel: (720) 482-9526 / Fax: (720) 482-9546

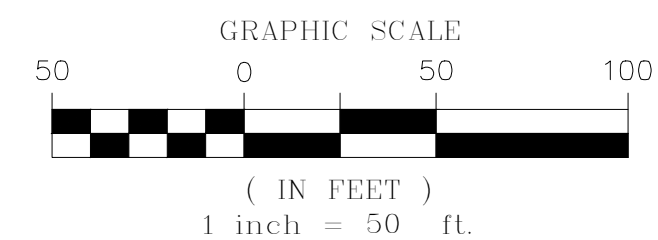
# TRAILS AT CROWFOOT SUBDIVISION FILING NO. 8 ADDRESS PLAT

A REPLAT OF TRACT P, TRACT T, TRACT W, TRACT Y, AND TRACT Z; OF TRAILS AT CROWFOOT FILING NO. 1  
 A PART OF THE SECTION 9, TOWNSHIP 7 SOUTH, RANGE 66 WEST OF THE 6th PRINCIPAL MERIDIAN,  
 TOWN OF PARKER, COUNTY OF DOUGLAS, STATE OF COLORADO  
 SHEET 2 OF 5

TOTAL ACREAGE = 10.688 ACRES, 31 LOTS NO TRACTS



LEGEND	
	FND. SECTION CORNER AS DESCRIBED
	R.O.W. RIGHT-OF-WAY
	S.W.U.E. SIDEWALK & UTILITY EASEMENT
	U.E. UTILITY EASEMENT
	D.U.E. DRAINAGE AND UTILITY EASEMENT
	A.E. ACCESS EASEMENT
	G.E. GAS EASEMENT
	EX U.E. EXISTING UTILITY EASEMENT
	FOUND REBAR & YELLOW PLASTIC CAP "LS 17666"
	SET NO. 6 REBAR, 30" LONG, w/2" ALUMINUM CAP STAMPED CVL L.S. NO. 25369 UNLESS OTHERWISE NOTED
	SIDEWALK & UTILITY EASEMENT LINE
	UTILITY EASEMENT LINE
	ROAD CENTERLINE



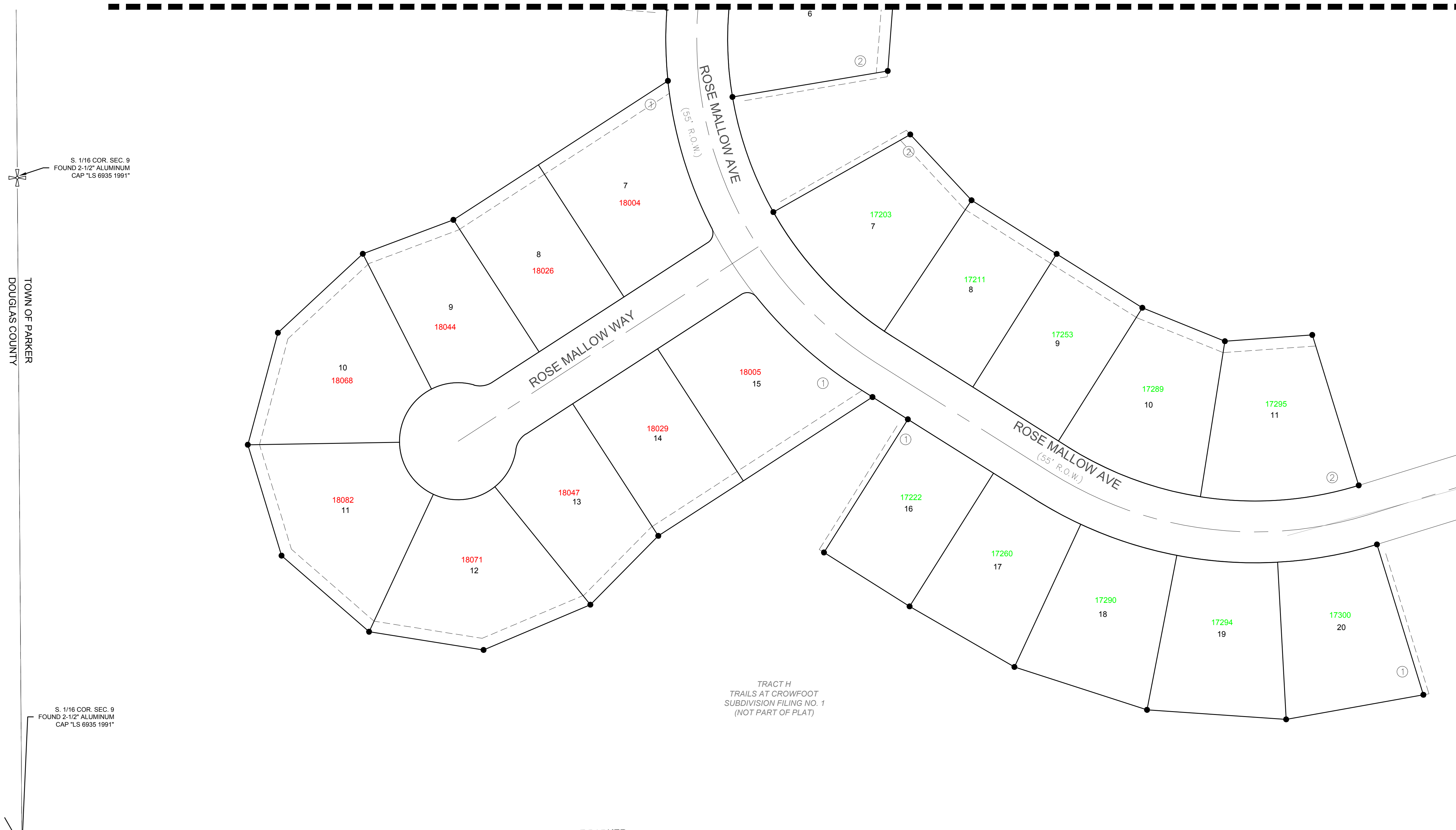
ENGINEER/SURVEYOR  
**CVL** Consultants of Colorado, Inc.  
 10333 E. Dry Creek Rd., Suite 240  
 Englewood, CO 80112  
 Tel: (720) 482-9526 / Fax: (720) 482-9546

# TRAILS AT CROWFOOT SUBDIVISION FILING NO. 8 ADDRESS PLAT

A REPLAT OF TRACT P, TRACT T, TRACT W, TRACT Y, AND TRACT Z; OF TRAILS AT CROWFOOT FILING NO. 1  
 A PART OF THE SECTION 9, TOWNSHIP 7 SOUTH, RANGE 66 WEST OF THE 6th PRINCIPAL MERIDIAN,  
 TOWN OF PARKER, COUNTY OF DOUGLAS, STATE OF COLORADO  
 SHEET 3 OF 5

TOTAL ACREAGE = 10.688 ACRES, 31 LOTS NO TRACTS

MATCHLINE - SEE SHEET 4



S. 1/16 COR. SEC. 9  
 FOUND 2-1/2" ALUMINUM  
 CAP "LS 6935 1991"

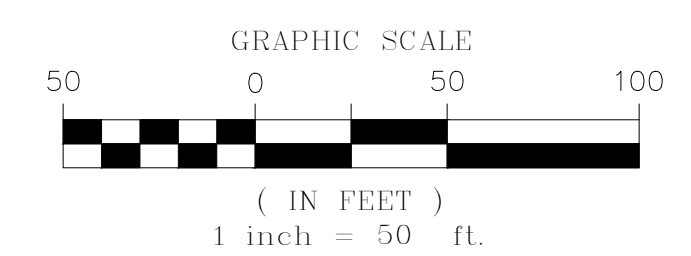
TOWN OF PARKER  
 DOUGLAS COUNTY

S. 1/16 COR. SEC. 9  
 FOUND 2-1/2" ALUMINUM  
 CAP "LS 6935 1991"

TRACT H  
 TRAILS AT CROWFOOT  
 SUBDIVISION FILING NO. 1  
 (NOT PART OF PLAT)

TOWN OF PARKER  
 DOUGLAS COUNTY

LEGEND	
	FND. SECTION CORNER AS DESCRIBED
	R.O.W. RIGHT-OF-WAY
	S.W.U.E. SIDEWALK & UTILITY EASEMENT
	U.E. UTILITY EASEMENT
	D.U.E. DRAINAGE AND UTILITY EASEMENT
	A.E. ACCESS EASEMENT
	G.E. GAS EASEMENT
	EX U.E. EXISTING UTILITY EASEMENT
	FOUND REBAR & YELLOW PLASTIC CAP "LS 17666"
	SET NO. 6 REBAR, 30" LONG, w/2" ALUMINUM CAP STAMPED CVL LS NO. 25369 UNLESS OTHERWISE NOTED
	SIDEWALK & UTILITY EASEMENT LINE
	UTILITY EASEMENT LINE
	ROAD CENTERLINE



ENGINEER/SURVEYOR  
**CVL** Consultants  
 of Colorado, Inc.  
 10333 E. Dry Creek Rd., Suite 240  
 Englewood, CO 80112  
 Tel: (720) 482-9526 / Fax: (720) 482-9546