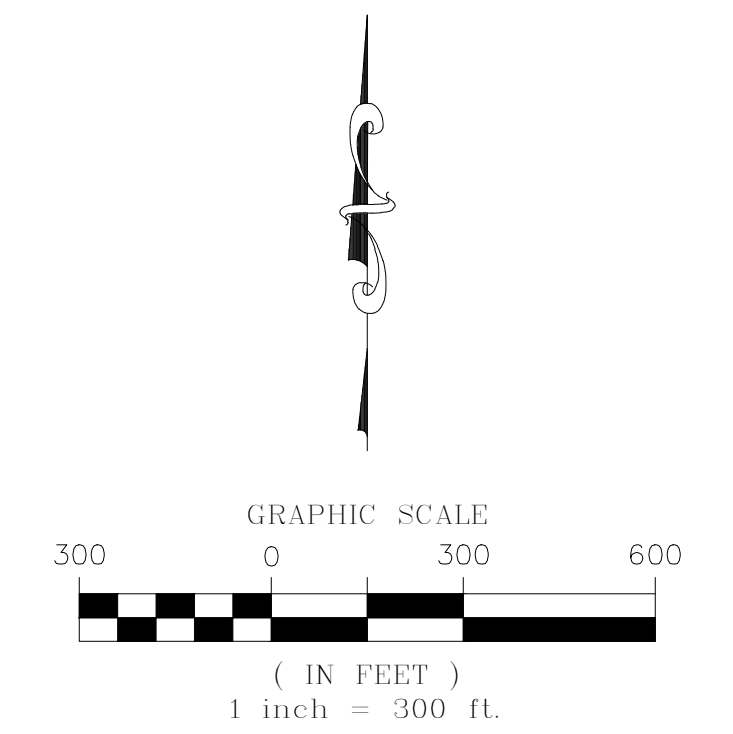
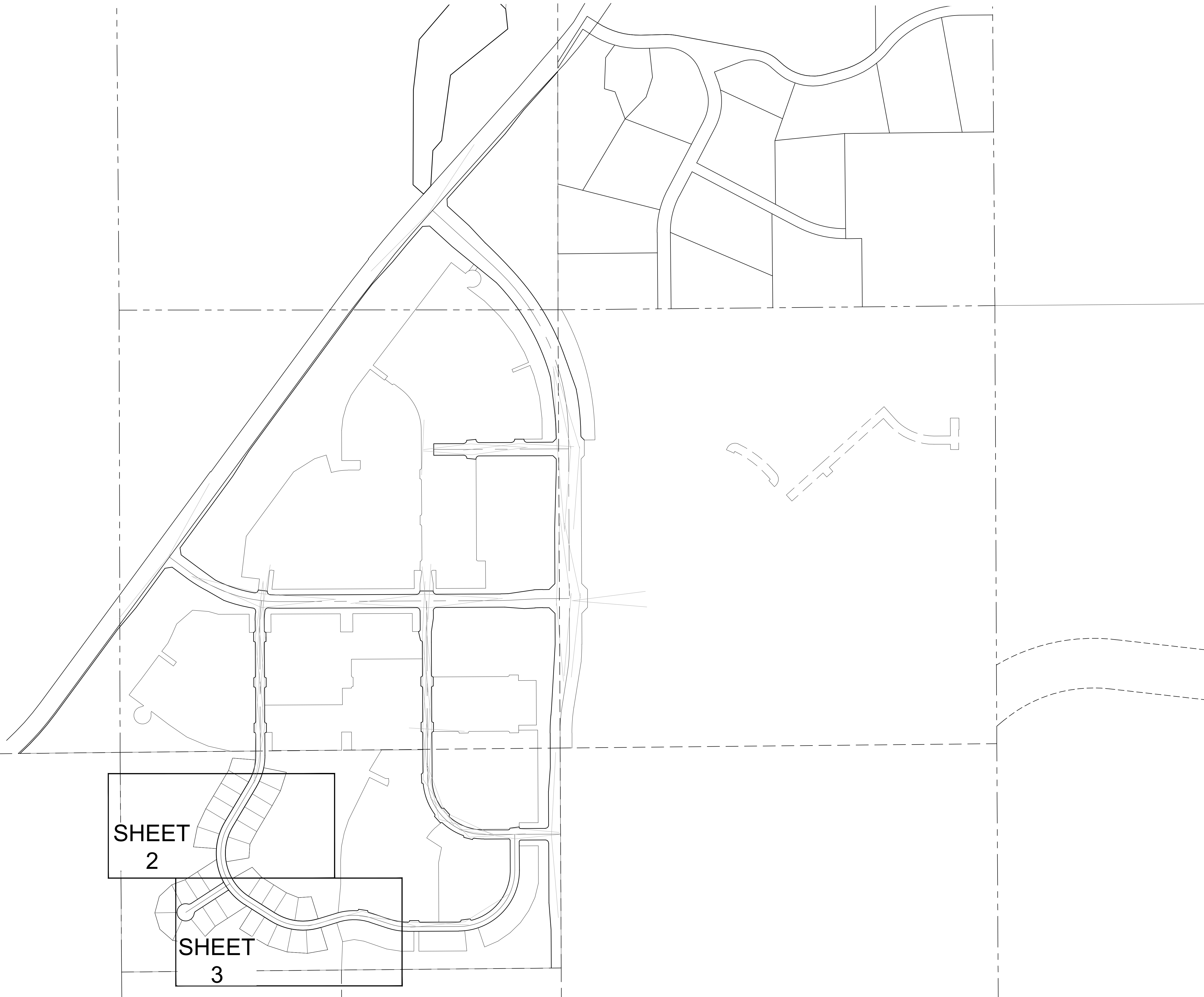


TRAILS AT CROWFOOT SUBDIVISION FILING NO. 8 ADDRESS PLAT

A RESUBDIVISION OF LOT 2, BLOCK 2; LOT 3, BLOCK 2; LOT 4, BLOCK 2; LOT 5, BLOCK 2; LOT 5, BLOCK 3; AND LOT 6, BLOCK 3 OF TRAILS AT CROWFOOT FILING NO. 1
A PART OF THE SECTION 9, TOWNSHIP 7 SOUTH, RANGE 66 WEST OF THE 6th PRINCIPAL MERIDIAN,
TOWN OF PARKER, COUNTY OF DOUGLAS, STATE OF COLORADO
SHEET 1 OF 3



SHEET
2

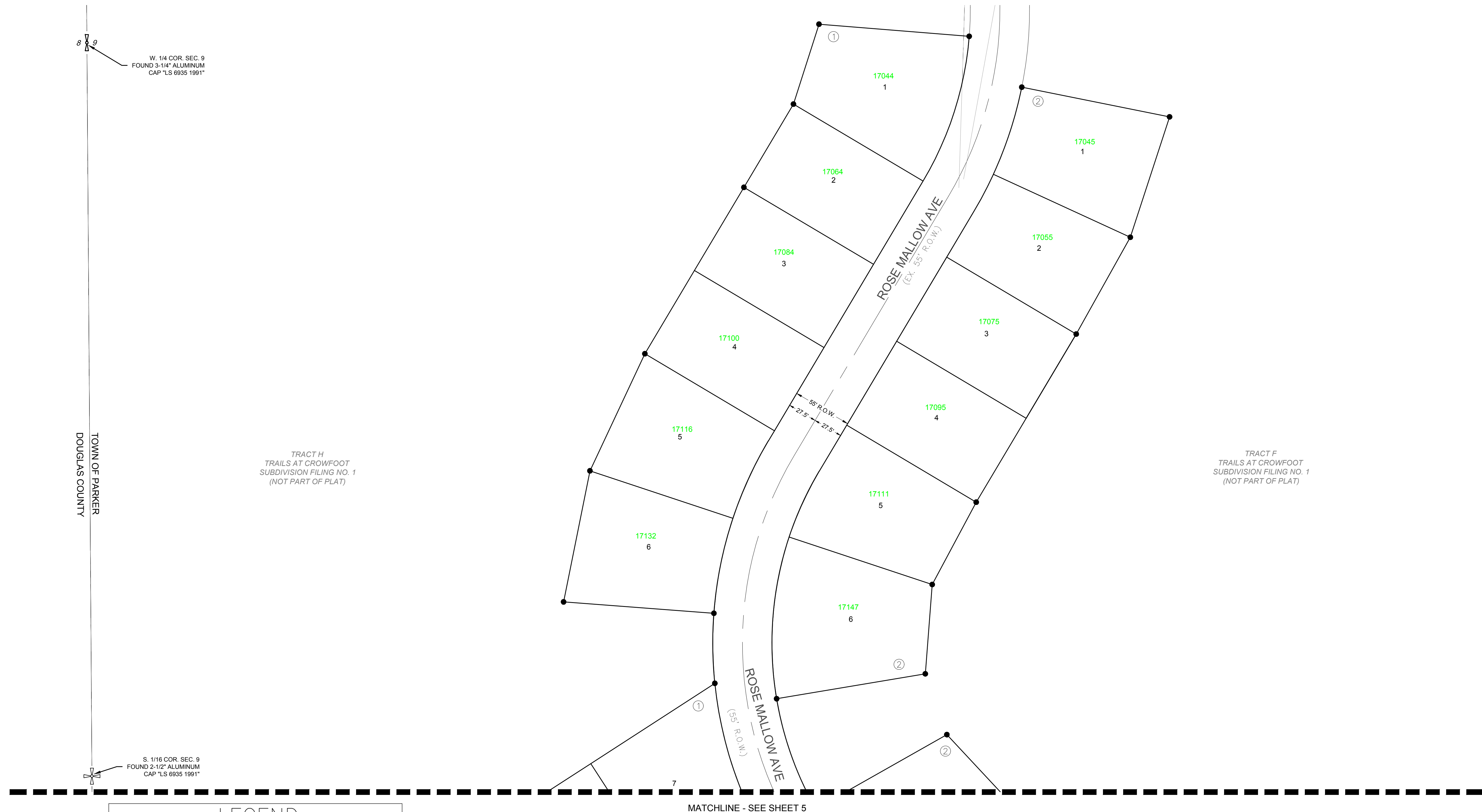
SHEET
3

ENGINEER/SURVEYOR
CVL Consultants
of Colorado, Inc.
10333 E. Dry Creek Rd., Suite 240
Englewood, CO 80112
Tel: (720) 482-9526 / Fax: (720) 482-9546

TRAILS AT CROWFOOT SUBDIVISION FILING NO. 8 ADDRESS PLAT

A REPLAT OF TRACT P, TRACT T, TRACT W, TRACT Y, AND TRACT Z; OF TRAILS AT CROWFOOT FILING NO. 1
 A PART OF THE SECTION 9, TOWNSHIP 7 SOUTH, RANGE 66 WEST OF THE 6th PRINCIPAL MERIDIAN,
 TOWN OF PARKER, COUNTY OF DOUGLAS, STATE OF COLORADO
 SHEET 2 OF 5

TOTAL ACREAGE = 10.688 ACRES, 31 LOTS NO TRACTS



W. 1/4 COR. SEC. 9
 FOUND 3-1/4" ALUMINUM
 CAP "LS 6935 1991"

TOWN OF PARKER
 DOUGLAS COUNTY

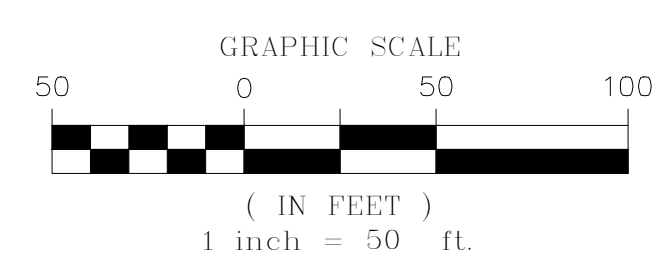
TRACT H
 TRAILS AT CROWFOOT
 SUBDIVISION FILING NO. 1
 (NOT PART OF PLAT)

TRACT F
 TRAILS AT CROWFOOT
 SUBDIVISION FILING NO. 1
 (NOT PART OF PLAT)

S. 1/16 COR. SEC. 9
 FOUND 2-1/2" ALUMINUM
 CAP "LS 6935 1991"

MATCHLINE - SEE SHEET 5

LEGEND	
	FND. SECTION CORNER AS DESCRIBED
	R.O.W. RIGHT-OF-WAY
	S.W.U.E. SIDEWALK & UTILITY EASEMENT
	U.E. UTILITY EASEMENT
	D.U.E. DRAINAGE AND UTILITY EASEMENT
	A.E. ACCESS EASEMENT
	G.E. GAS EASEMENT
	EX U.E. EXISTING UTILITY EASEMENT
	FOUND REBAR & YELLOW PLASTIC CAP "LS 17666"
	SET NO. 6 REBAR, 30" LONG, w/2" ALUMINUM CAP STAMPED CVL I.S. NO. 25369 UNLESS OTHERWISE NOTED
	SIDEWALK & UTILITY EASEMENT LINE
	UTILITY EASEMENT LINE
	ROAD CENTERLINE



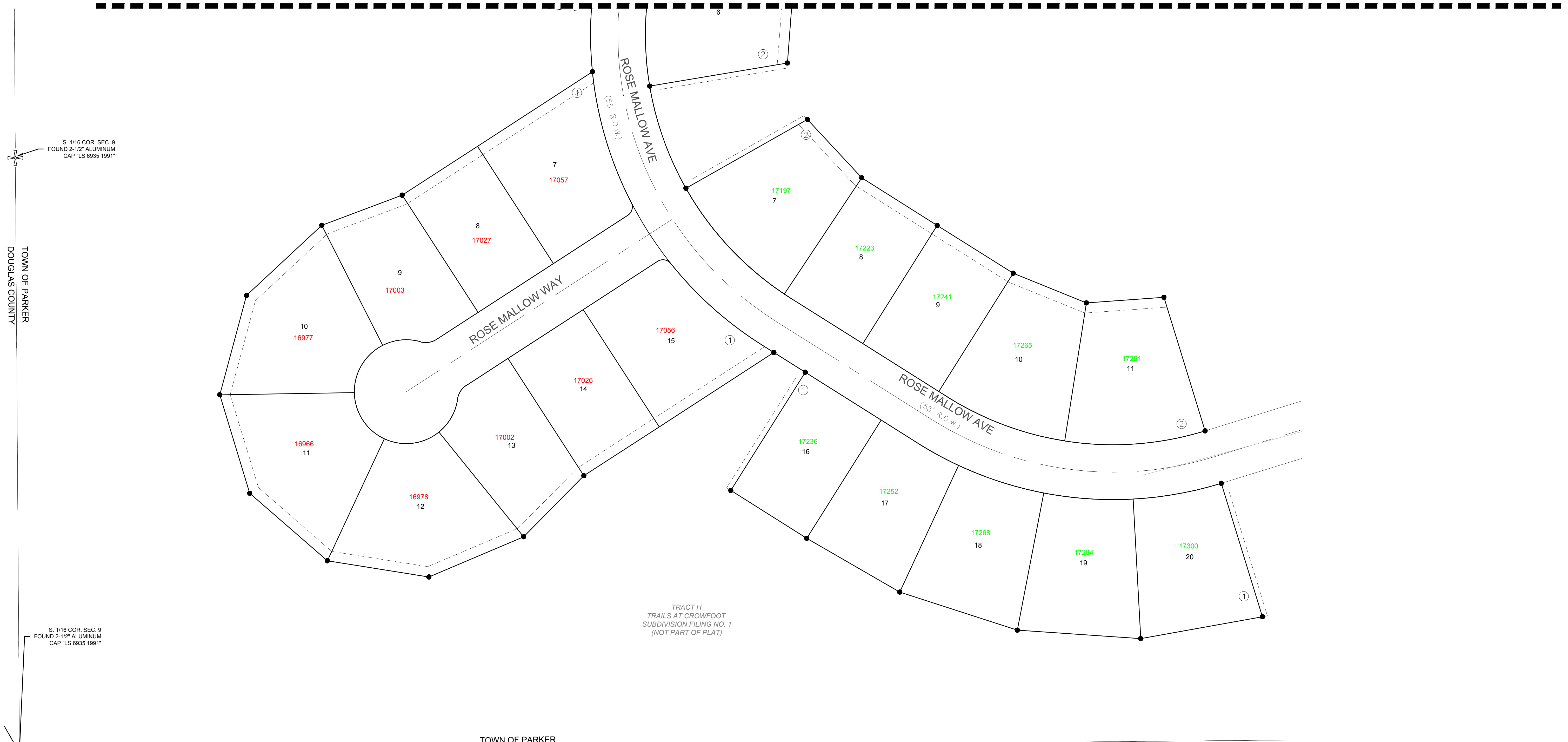
ENGINEER/SURVEYOR
CVL Consultants
 of Colorado, Inc.
 10333 E. Dry Creek Rd., Suite 240
 Englewood, CO 80112
 Tel: (720) 482-9526 / Fax: (720) 482-9546

TRAILS AT CROWFOOT SUBDIVISION FILING NO. 8 ADDRESS PLAT

A REPLAT OF TRACT P, TRACT T, TRACT W, TRACT Y, AND TRACT Z; OF TRAILS AT CROWFOOT FILING NO. 1
 A PART OF THE SECTION 9, TOWNSHIP 7 SOUTH, RANGE 66 WEST OF THE 6th PRINCIPAL MERIDIAN,
 TOWN OF PARKER, COUNTY OF DOUGLAS, STATE OF COLORADO
 SHEET 3 OF 5

TOTAL ACREAGE = 10.688 ACRES, 31 LOTS NO TRACTS

MATCHLINE - SEE SHEET 4



S. 1/16 COR. SEC. 9
 FOUND 2-1/2" ALUMINUM
 CAP "LS 6935 1991"

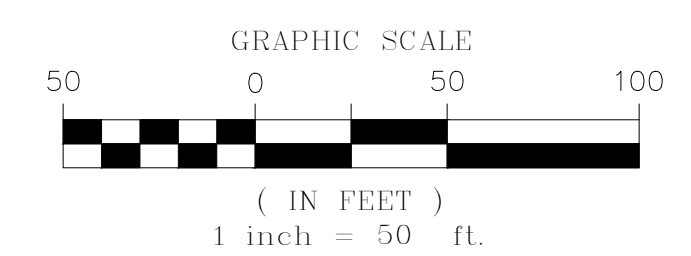
TOWN OF PARKER
 DOUGLAS COUNTY

S. 1/16 COR. SEC. 9
 FOUND 2-1/2" ALUMINUM
 CAP "LS 6935 1991"

TRACT H
 TRAILS AT CROWFOOT
 SUBDIVISION FILING NO. 1
 (NOT PART OF PLAT)

TOWN OF PARKER
 DOUGLAS COUNTY

LEGEND	
	FND. SECTION CORNER AS DESCRIBED
	R.O.W. RIGHT-OF-WAY
	S.W.U.E. SIDEWALK & UTILITY EASEMENT
	U.E. UTILITY EASEMENT
	D.U.E. DRAINAGE AND UTILITY EASEMENT
	A.E. ACCESS EASEMENT
	G.E. GAS EASEMENT
	EX U.E. EXISTING UTILITY EASEMENT
	FOUND REBAR & YELLOW PLASTIC CAP "LS 17666"
	SET NO. 6 REBAR, 30" LONG, w/2" ALUMINUM CAP STAMPED CVL I.S. NO. 25369 UNLESS OTHERWISE NOTED
	SIDEWALK & UTILITY EASEMENT LINE
	UTILITY EASEMENT LINE
	ROAD CENTERLINE



ENGINEER/SURVEYOR
CVL Consultants
 of Colorado, Inc.
 10333 E. Dry Creek Rd., Suite 240
 Englewood, CO 80112
 Tel: (720) 482-9526 / Fax: (720) 482-9546