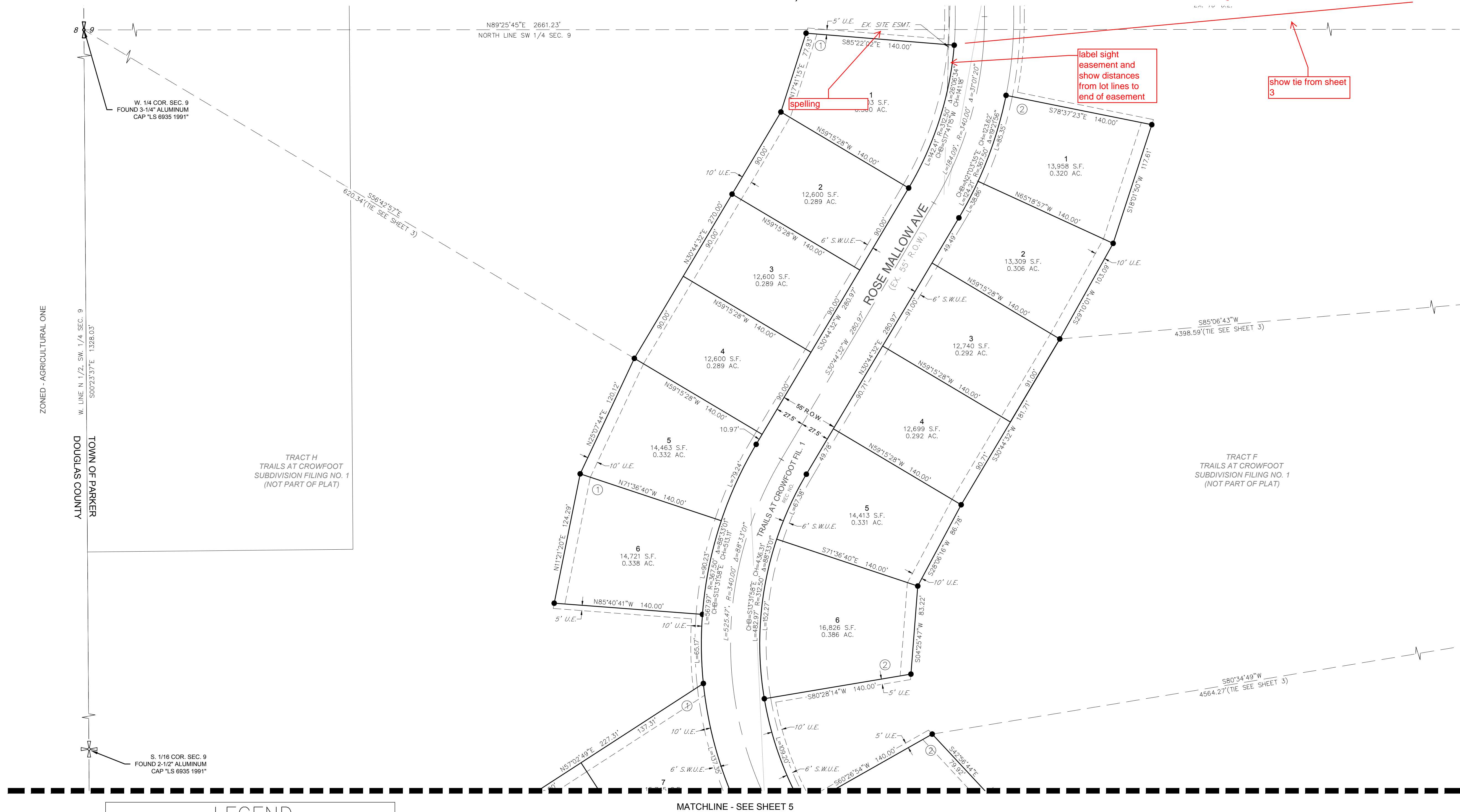


TRAILS AT CROWFOOT SUBDIVISION FILING NO. 8

A REPLAT OF TRACT P, TRACT T, TRACT W, TRACT Y, AND TRACT Z; OF TRAILS AT CROWFOOT FILING NO. 1
 A PART OF THE SECTION 9, TOWNSHIP 7 SOUTH, RANGE 66 WEST OF THE 6th PRINCIPAL MERIDIAN,
 TOWN OF PARKER, COUNTY OF DOUGLAS, STATE OF COLORADO
 SHEET 4 OF 5

TOTAL ACREAGE = 10.688 ACRES, 31 LOTS NO TRACTS



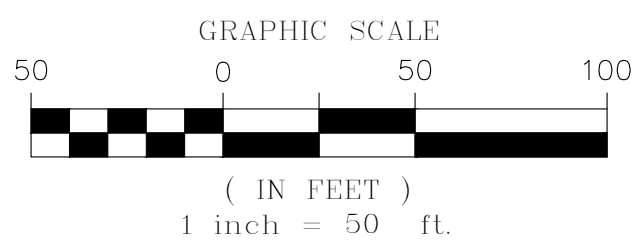
adjust viewport

label sight easement and show distances from lot lines to end of easement

show tie from sheet 3

spelling

LEGEND	
	FND. SECTION CORNER AS DESCRIBED
	R.O.W. RIGHT-OF-WAY
	S.W.U.E. SIDEWALK & UTILITY EASEMENT
	U.E. UTILITY EASEMENT
	D.U.E. DRAINAGE AND UTILITY EASEMENT
	A.E. ACCESS EASEMENT
	G.E. GAS EASEMENT
	EX U.E. EXISTING UTILITY EASEMENT
	○ FOUND REBAR & YELLOW PLASTIC CAP "LS 17666"
	● SET NO. 6 REBAR, 30" LONG, w/2" ALUMINUM CAP STAMPED C.V.L. S. NO. 25369 UNLESS OTHERWISE NOTED
	- - - - - SIDEWALK & UTILITY EASEMENT LINE
	- - - - - UTILITY EASEMENT LINE
	==== ROAD CENTERLINE



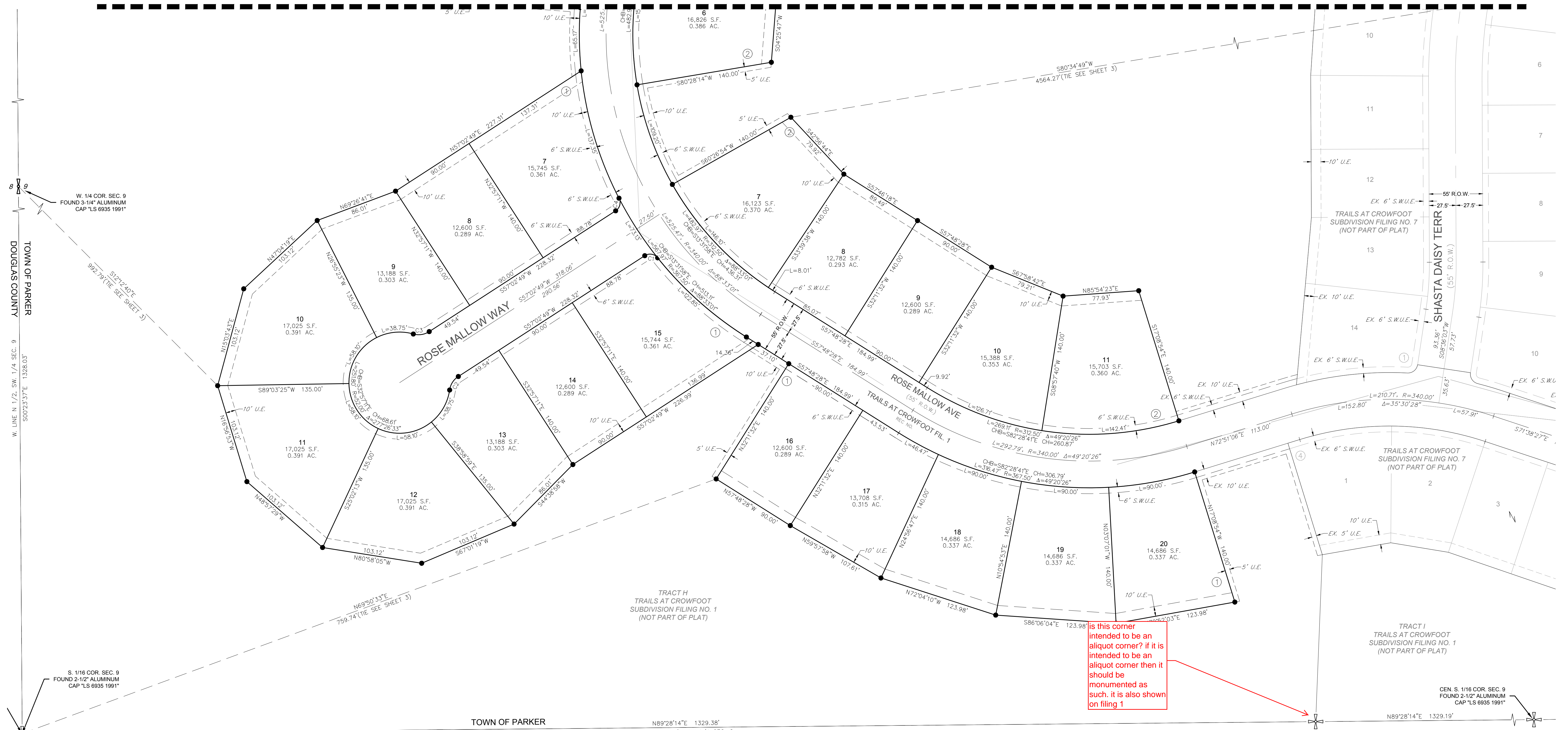
ENGINEER/SURVEYOR
CVL Consultants of Colorado, Inc.
 10333 E. Dry Creek Rd., Suite 240
 Englewood, CO 80112
 Tel: (720) 482-9526 / Fax: (720) 482-9546

TRAILS AT CROWFOOT SUBDIVISION FILING NO. 8

A REPLAT OF TRACT P, TRACT T, TRACT W, TRACT Y, AND TRACT Z; OF TRAILS AT CROWFOOT FILING NO. 1
 A PART OF THE SECTION 9, TOWNSHIP 7 SOUTH, RANGE 66 WEST OF THE 6th PRINCIPAL MERIDIAN,
 TOWN OF PARKER, COUNTY OF DOUGLAS, STATE OF COLORADO
 SHEET 5 OF 5

TOTAL ACREAGE = 10.688 ACRES, 31 LOTS NO TRACTS

MATCHLINE - SEE SHEET 4

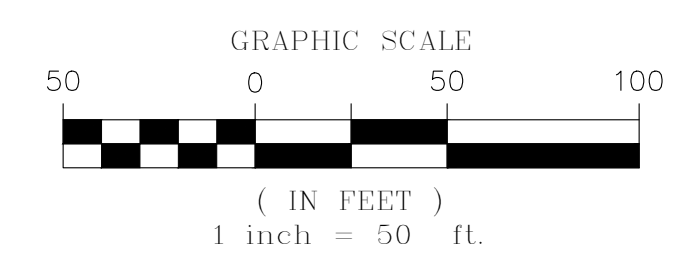


is this corner intended to be an aliquot corner? if it is intended to be an aliquot corner then it should be monumented as such. it is also shown on filing 1

label section corner

LEGEND	
	FND. SECTION CORNER AS DESCRIBED
	R.O.W. RIGHT-OF-WAY
	S.W.U.E. SIDEWALK & UTILITY EASEMENT
	U.E. UTILITY EASEMENT
	D.U.E. DRAINAGE AND UTILITY EASEMENT
	A.E. ACCESS EASEMENT
	G.E. GAS EASEMENT
	EX U.E. EXISTING UTILITY EASEMENT
	FOUND REBAR & YELLOW PLASTIC CAP "LS 17666"
	SET NO. 6 REBAR, 30" LONG, w/2" ALUMINUM CAP STAMPED CVL LS NO. 25369 UNLESS OTHERWISE NOTED
	SIDEWALK & UTILITY EASEMENT LINE
	UTILITY EASEMENT LINE
	ROAD CENTERLINE

CURVE TABLE					
CURVE NO.	LENGTH	RADIUS	DELTA	CHORD DIRECTION	CHORD LENGTH
C1	14.71'	10.00'	84°17'56"	N80°48'13"W	13.42'
C2	17.01'	20.00'	48°43'17"	S32°41'11"W	16.50'
C3	17.01'	20.00'	48°43'17"	N81°24'28"E	16.50'
C4	14.71'	10.00'	84°17'56"	N14°53'51"E	13.42'



ENGINEER/SURVEYOR
CVL Consultants of Colorado, Inc.
 10333 E. Dry Creek Rd., Suite 240
 Englewood, CO 80112
 Tel: (720) 482-9526 / Fax: (720) 482-9546