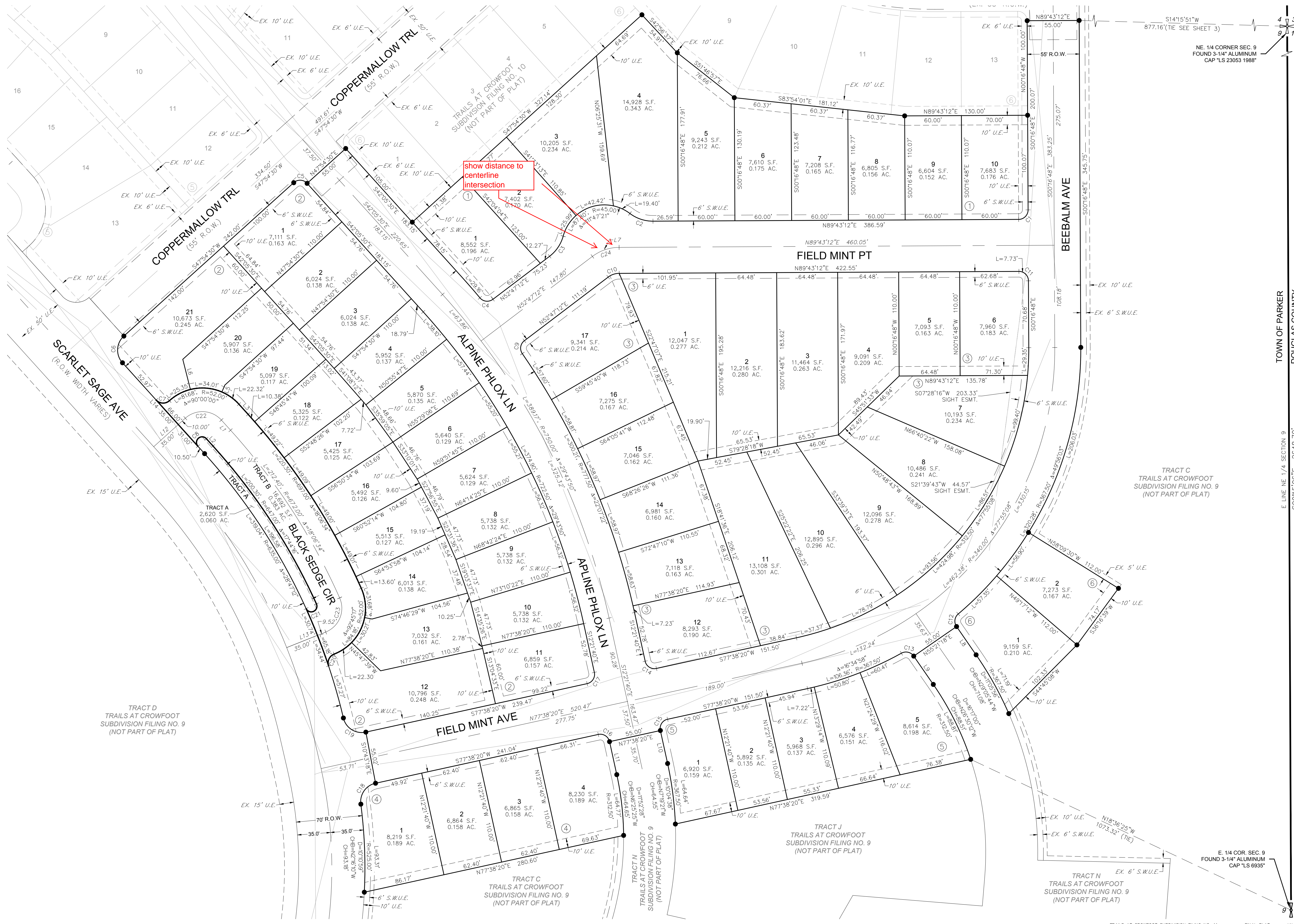


TRAILS AT CROWFOOT SUBDIVISION FILING NO. 11

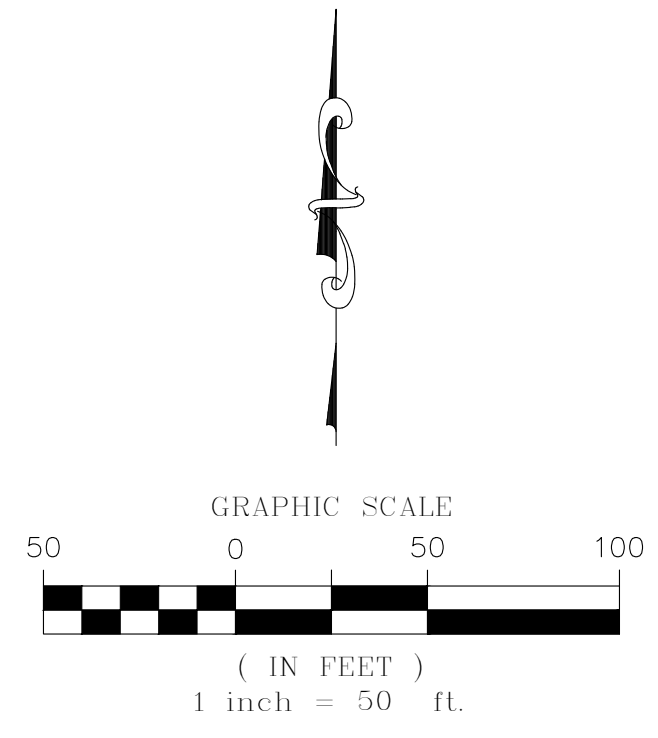
A REPLAT OF TRACT M OF TRAILS AT CROWFOOT FILING NO. 9
 A PART OF SECTION 9, TOWNSHIP 7 SOUTH, RANGE 66 WEST OF THE 6th PRINCIPAL MERIDIAN,
 TOWN OF PARKER, COUNTY OF DOUGLAS, STATE OF COLORADO
 SHEET 4 OF 4

TOTAL ACREAGE = 14.329 ACRES, 59 LOTS, 2 TRACT



LINE TABLE

LINE NO.	LENGTH	DIRECTION
L1	14.50'	N42°05'30"W
L2	10.50'	N42°05'30"W
L3	14.50'	N42°05'30"W
L4	8.00'	N79°04'49"W
L5	8.00'	S23°18'48"W
L6	32.86'	S14°09'36"E
L7	2.55'	N18°44'48"W
L8	36.38'	N34°38'42"W
L9	36.38'	S34°38'42"E
L10	35.70'	S12°21'40"E
L11	35.70'	S12°21'40"E
L12	45.00'	S47°54'30"W
L13	44.52'	N68°14'21"E
L14	66.00'	S42°05'30"E



CURVE TABLE

CURVE NO.	LENGTH	RADIUS	DELTA	CHORD DIRECTION	CHORD LENGTH
C1	15.71'	10.00'	90°00'00"	N44°43'12"E	14.14'
C2	26.13'	40.00'	37°25'41"	S71°33'58"E	25.67'
C3	26.13'	40.00'	37°25'41"	N34°04'22"E	25.67'
C4	15.23'	10.00'	87°16'14"	S83°34'41"E	13.80'
C5	15.71'	10.00'	90°00'00"	N87°05'30"W	14.14'
C6	31.42'	20.00'	90°00'00"	S2°54'30"W	28.28'
C7	15.71'	10.00'	90°00'00"	S87°05'30"E	14.14'
C8	18.85'	6.00'	180°00'00"	S47°54'30"W	12.00'
C9	15.23'	10.00'	87°16'14"	S9°09'05"W	13.80'
C10	12.57'	19.50'	36°56'00"	S71°15'12"W	12.35'
C11	15.71'	10.00'	90°00'00"	N45°16'48"W	14.14'
C12	14.71'	10.00'	84°17'56"	S7°30'16"W	13.42'
C13	14.71'	10.00'	84°17'56"	N76°47'40"W	13.42'
C14	15.71'	10.00'	90°00'00"	S57°21'40"E	14.14'
C15	15.71'	10.00'	89°59'58"	S32°38'21"W	14.14'
C16	15.71'	10.00'	90°00'00"	N57°21'40"W	14.14'
C17	15.71'	10.00'	90°00'00"	N32°38'20"E	14.14'
C18	29.67'	20.00'	85°00'00"	S35°08'20"W	27.02'
C19	31.09'	20.00'	89°03'22"	S57°49'59"E	28.05'
C20	15.23'	10.00'	87°14'43"	S25°09'00"W	13.80'
C21	18.85'	6.00'	180°00'00"	N65°38'46"E	12.00'
C22	42.41'	27.00'	90°00'00"	N87°05'30"W	38.18'
C23	43.46'	27.00'	92°13'17"	N22°07'42"E	38.92'
C24	30.30'	47.00'	36°56'04"	S71°15'10"W	29.78'

LEGEND

- FND. SECTION CORNER AS DESCRIBED
- R.O.W. RIGHT-OF-WAY
- S.W.U.E. SIDEWALK & UTILITY EASEMENT
- U.E. UTILITY EASEMENT
- D.U.E. DRAINAGE AND UTILITY EASEMENT
- A.E. ACCESS EASEMENT
- G.E. GAS EASEMENT
- EX U.E. EXISTING UTILITY EASEMENT
- FOUND REBAR & YELLOW PLASTIC CAP "LS 17666"
- SET NO. 6 REBAR, 30" LONG, w/2" ALUMINUM CAP STAMPED CVL LS NO. 25369 UNLESS OTHERWISE NOTED
- SIDEWALK & UTILITY EASEMENT LINE
- UTILITY EASEMENT LINE
- ROAD CENTERLINE

TOWN OF PARKER
 DOUGLAS COUNTY
 ZONED - OPEN SPACE CONSERVATION
 E. LINE NE 1/4, SECTION 9
 S00°15'06"E 2648.70'

ENGINEER/SURVEYOR
CVL Consultants
 of Colorado, Inc.
 10333 E. Dry Creek Rd., Suite 240
 Englewood, CO 80112
 Tel: (720) 482-9526 / Fax: (720) 482-9546