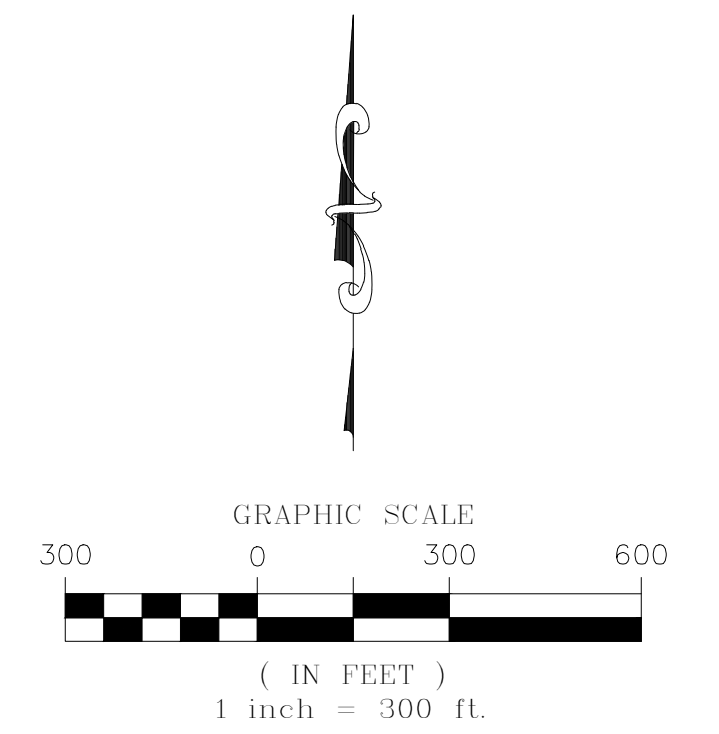
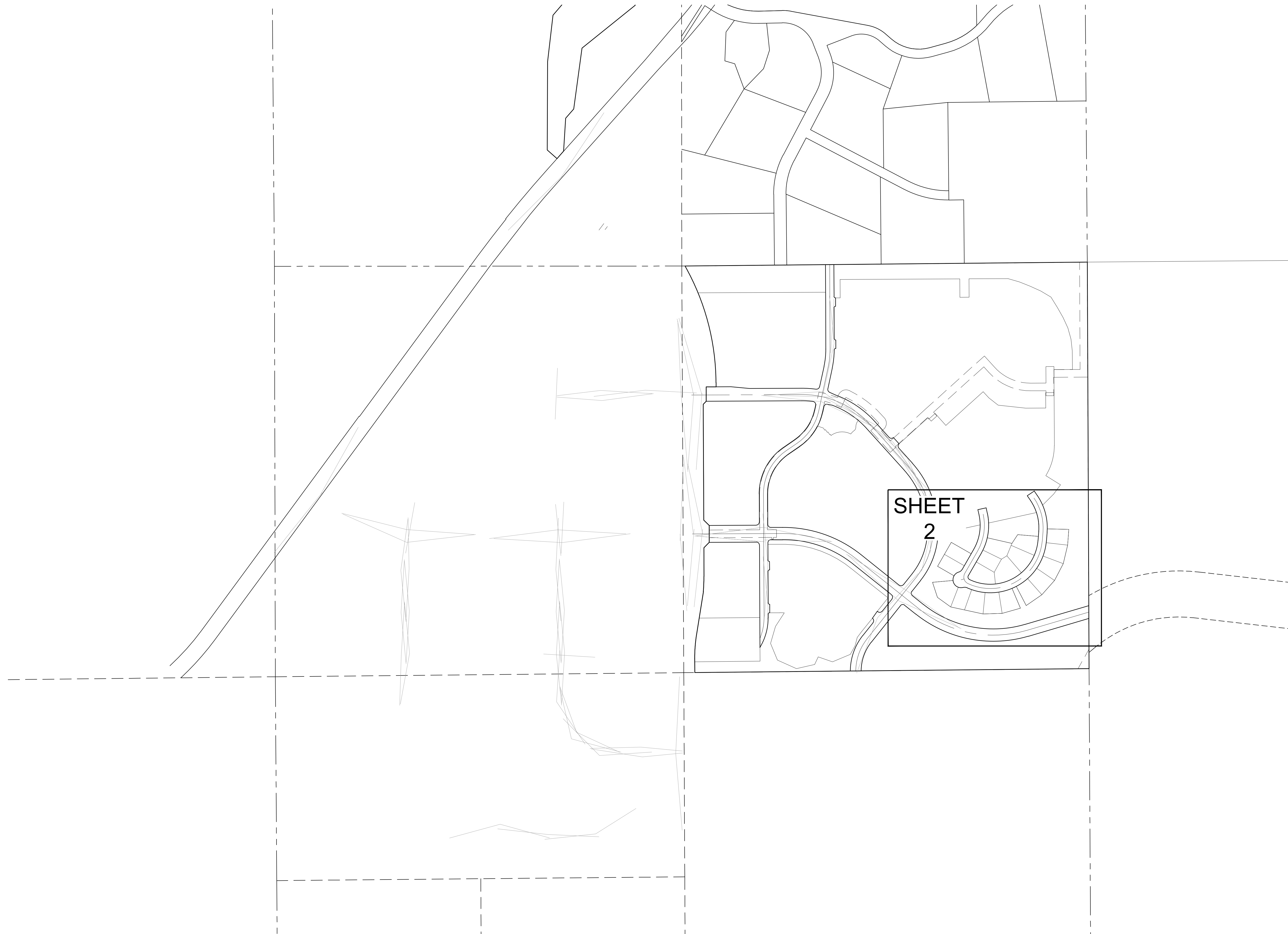


# TRAILS AT CROWFOOT SUBDIVISION FILING NO. 12 ADDRESS PLAT

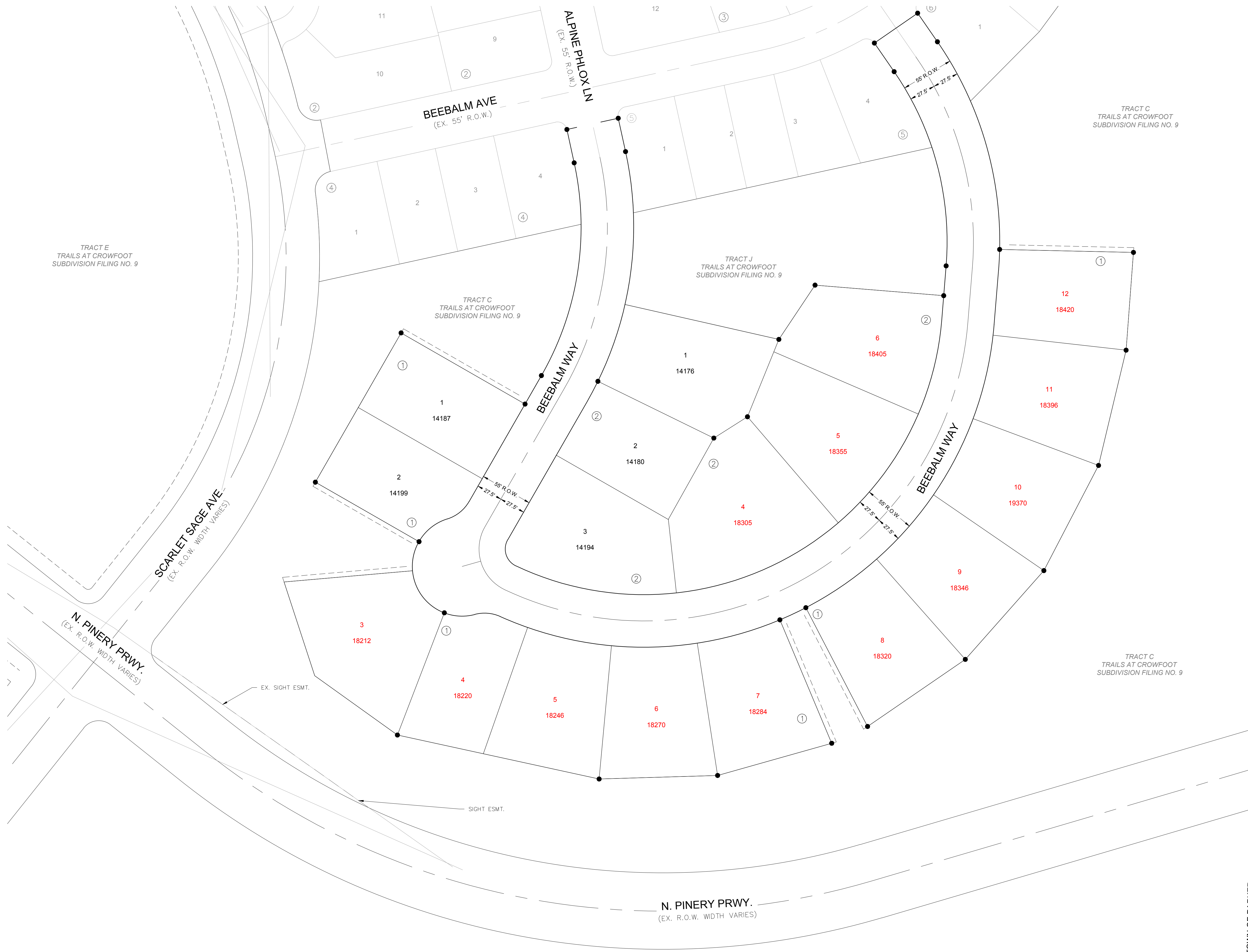
A PART OF THE SECTIONS 4, 8 AND 9, TOWNSHIP 7 SOUTH, RANGE 66 WEST OF THE 6th PRINCIPAL MERIDIAN,  
TOWN OF PARKER, COUNTY OF DOUGLAS, STATE OF COLORADO  
SHEET 1 OF 2



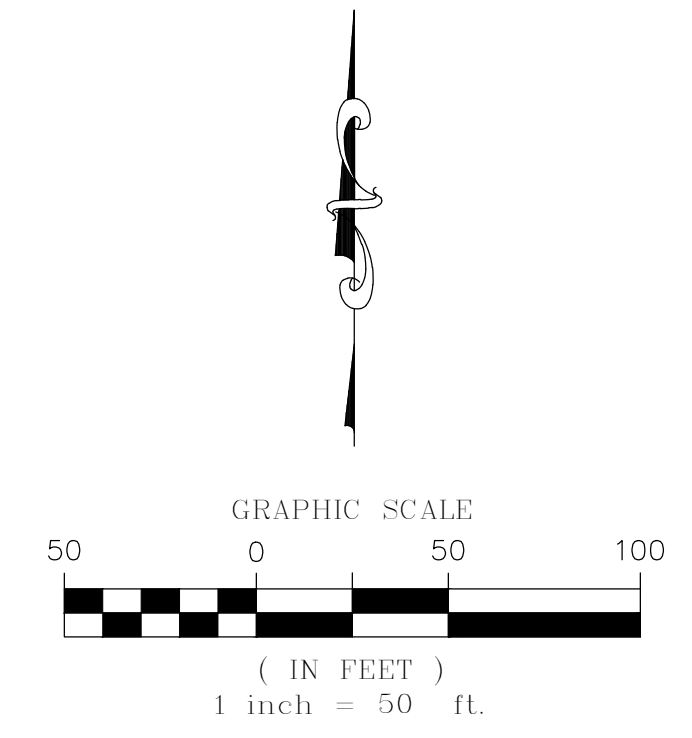
ENGINEER/SURVEYOR  
**CVL** Consultants  
of Colorado, Inc.  
10333 E. Dry Creek Rd., Suite 240  
Englewood, CO 80112  
Tel: (720) 482-9526 / Fax: (720) 482-9546

# TRAILS AT CROWFOOT SUBDIVISION FILING NO. 12 ADDRESS PLAT

A PART OF THE SECTIONS 4, 8 AND 9, TOWNSHIP 7 SOUTH, RANGE 66 WEST OF THE 6th PRINCIPAL MERIDIAN,  
TOWN OF PARKER, COUNTY OF DOUGLAS, STATE OF COLORADO  
SHEET 2 OF 2



DOUGLAS COUNTY  
ZONED - OPEN SPACE CONSERVATION



LEGEND	
	FND. SECTION CORNER AS DESCRIBED
	R.O.W. RIGHT-OF-WAY
	S.W.U.E. SIDEWALK & UTILITY EASEMENT
	U.E. UTILITY EASEMENT
	EX U.E. EXISTING UTILITY EASEMENT

TOWN OF PARKER  
DOUGLAS COUNTY

ENGINEER/SURVEYOR  
**CVL** Consultants  
of Colorado, Inc.  
10333 E. Dry Creek Rd., Suite 240  
Englewood, CO 80112  
Tel: (720) 482-9526 / Fax: (720) 482-9546