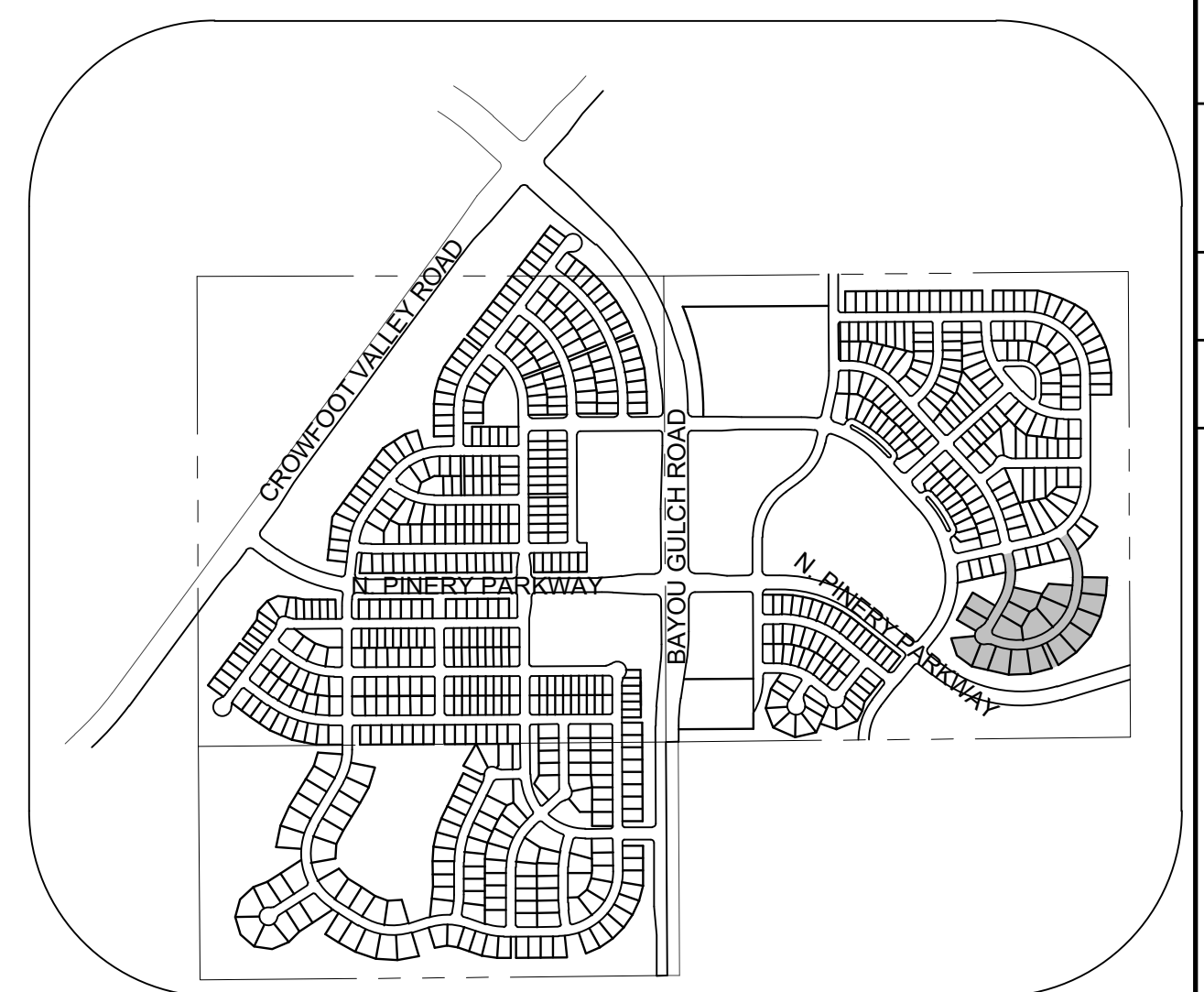
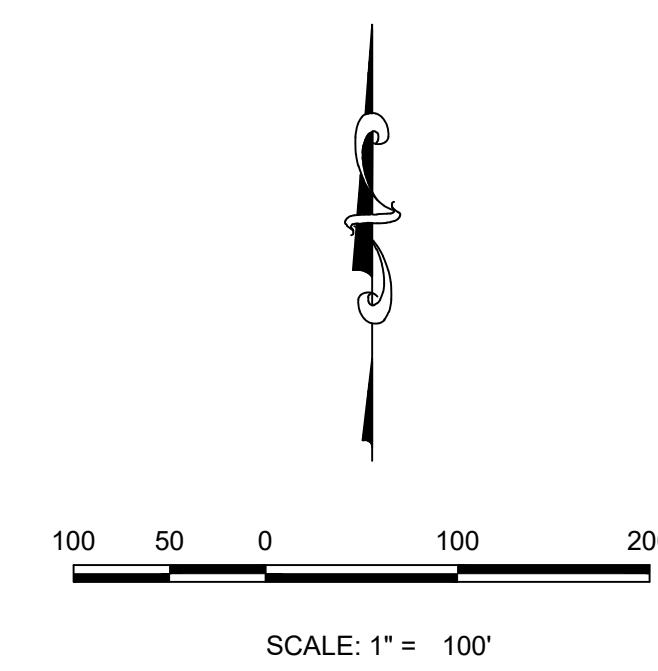
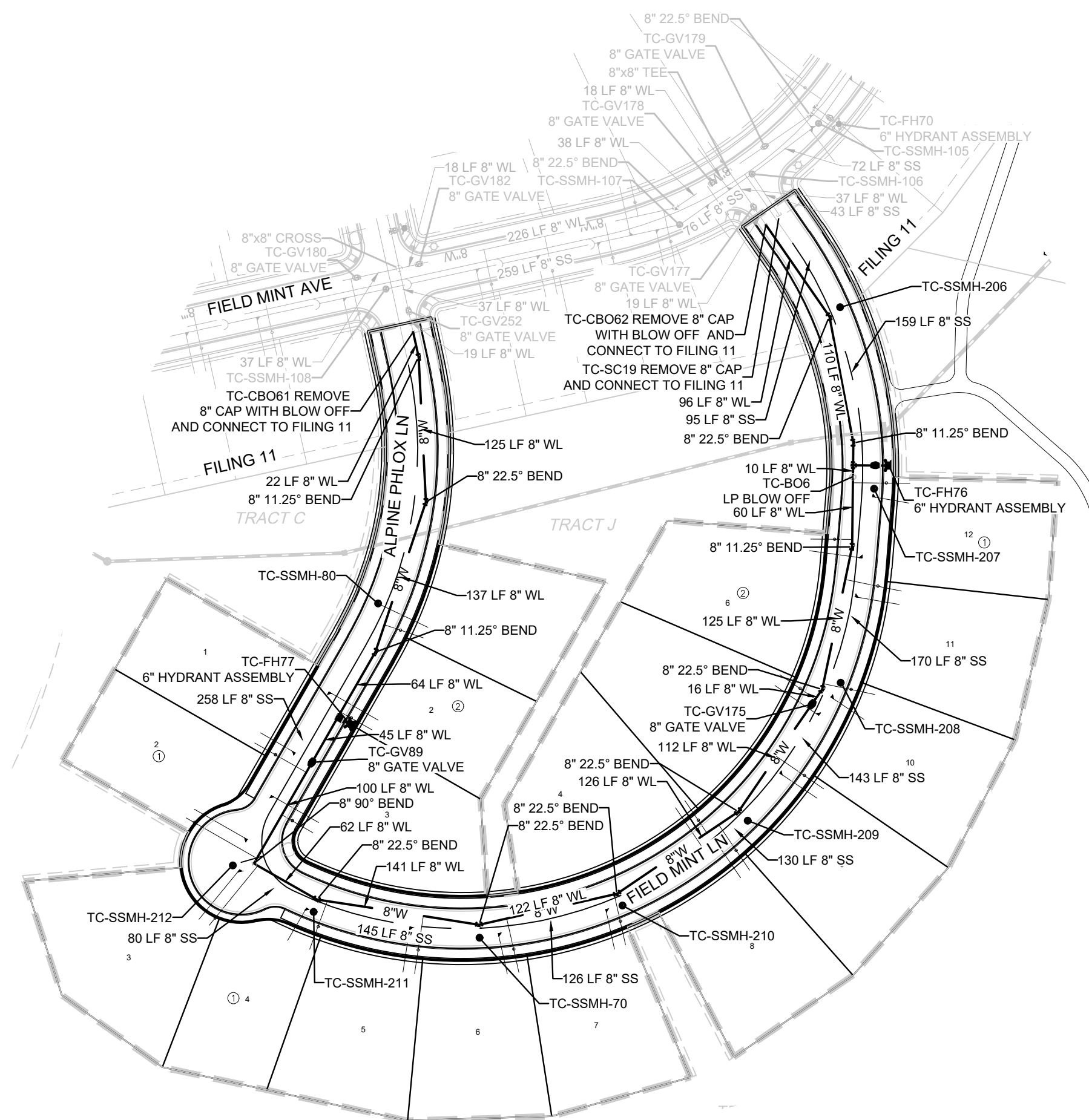


SERVICE TABLE			
FILING, BLOCK, LOT	STREET	SANITARY STATIONING	WATER STATIONING
F12.B1.L1	ALPINE PHLOX LN	29+50.25	29+60.25
F12.B1.L2	FIELD MINT LN	10+23.20	10+37.66
F12.B1.L3	FIELD MINT LN	10+41.14	10+43.08
F12.B1.L4	FIELD MINT LN	10+93.97	11+08.63
F12.B1.L5	FIELD MINT LN	11+83.19	11+93.73
F12.B1.L6	FIELD MINT LN	12+58.55	12+67.20
F12.B1.L7	FIELD MINT LN	13+51.92	13+63.49
F12.B1.L8	FIELD MINT LN	14+62.18	14+73.36
F12.B1.L9	FIELD MINT LN	15+42.16	15+52.12
F12.B1.L10	FIELD MINT LN	16+20.13	16+28.14
F12.B1.L11	FIELD MINT LN	17+07.78	17+21.65
F12.B1.L12	FIELD MINT LN	17+94.58	18+05.80
F12.B2.L1	ALPINE PHLOX LN	28+02.69	28+16.97
F12.B2.L2	ALPINE PHLOX LN	28+90.38	29+00.34
F12.B2.L3	ALPINE PHLOX LN	29+92.34	30+02.34
F12.B2.L4	FIELD MINT LN	14+49.92	14+60.76
F12.B2.L5	FIELD MINT LN	16+01.73	16+13.11
F12.B2.L6	FIELD MINT LN	17+41.37	17+56.61



KEYMAP
N.T.S.
LEGEND

②	BLOCK NUMBER	△	PROPOSED RANGE POINT
(A)	LOT TYPE	---	CENTERLINE
6	LOT NUMBER	---	RIGHT-OF-WAY
⊗	PROPOSED BUTTERFLY VALVE	---	PROPERTY LINE
⊞	PROPOSED CAP WITH END OF LINE BLOWOFF	---	EDGE OF PAVEMENT
⊞	PROPOSED REDUCER	→	PROPOSED DIRECTION OF FLOW
⊞	PROPOSED VALVE	1.0%	PROPOSED SLOPE & DIRECTION
⊞	PROPOSED FIRE HYDRANT	---	EXISTING 5' CONTOUR
⊞	PROPOSED WL FITTING WITH THRUST BLOCK	---	EXISTING 1' CONTOUR
⊞	PROPOSED FLARED END SECTION	---	PROPOSED 5' CONTOUR
⊞	PROPOSED LOW POINT BLOW-OFF	---	PROPOSED 1' CONTOUR
⊞	PROPOSED AIR VALVE	---	PROPOSED STORM DRAIN
⊞	FUTURE PHASE VALVE	---	PROPOSED SEWER LINE WITH MANHOLE
⊞	FUTURE FIRE HYDRANT	---	PROPOSED LATERAL SEWER LINE
⊞	PROPOSED LIGHT POLE	---	PROPOSED WATER LATERAL W/ METER
⊞	PROPOSED SIDEWALK RAMP	---	SECTION LINE
10.00	EXISTING ELEVATION	---	FILING BOUNDARY
10.00	PROPOSED DESIGN ELEVATION	FO	EXISTING FIBER OPTIC LINE
⊞	PROPOSED STORM DRAIN INLET	OH	EXISTING OVERHEAD POWER
⊞	PROPOSED STORM DRAIN MANHOLE	TEL	EXISTING TELEPHONE LINE
		---	PWSD EASEMENT
		---	TYP. EASEMENT

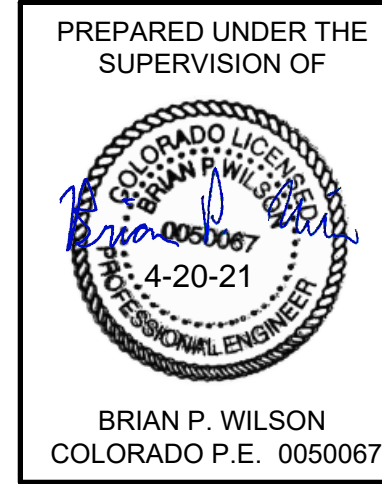
ABBREVIATIONS

AD	ANGLE DIFFERENCE	MH	MANHOLE
AV	AIR VAC RELEASE VALVE	N.T.S.	NOT TO SCALE
BVC	BEGIN VERTICAL CURVE	PVC	POLYVINYL CHLORIDE
BVP	BEGIN VERTICAL PROFILE	PVI	PT. OF VERTICAL INTERSECTION
CB0	CAP WITH BLOW OFF	PVT	POINT OF VERTICAL TANGENT
CRR	CURB RETURN RADIUS	RCBC	REINFORCED CONCRETE BOX CULVERT
EL	ELEVATION	RCP	REINFORCED CONCRETE PIPE
EP	EDGE OF PAVEMENT	ROW	RIGHT OF WAY
EVC	END VERTICAL CURVE	SC	SANITARY CAP
EVP	END VERTICAL PROFILE	SD	STORM DRAIN
FG	FINISHED GROUND	SL	SECTION LINE
FH	FIRE HYDRANT	SS	SANITARY SEWER
FL	FLOW LINE	STA	STATION
GV	GATE VALVE	T.O.P.	TOP OF PIPE
HCR	HANDICAP CURB RAMP	UE	UTILITY EASEMENT
HP	HIGH POINT	VC	VERTICAL CURVE
INV	INVERT	WL	WATER LINE
K	CURVATURE COEFFICIENT	WLC	WATER LINE CONNECTION
LF	LINEAR FEET	WSE	WATER SURFACE ELEVATION

THE TOWN OF PARKER REVIEW CONSTITUTES GENERAL COMPLIANCE WITH THE TOWN'S STANDARDS AND APPROVED VARIANCES, SUBJECT TO THESE PLANS BEING STAMPED, SIGN, AND DATED BY THE PROFESSIONAL ENGINEER OF RECORD. REVIEW BY THE TOWN DOES NOT CONSTITUTE APPROVAL OF THE PLAN DESIGN OR ACCURACY AND CORRECTNESS OF ENGINEERING CALCULATIONS. ERRORS IN THE DESIGN OR CALCULATIONS REMAIN THE RESPONSIBILITY OF THE REGISTERED PROFESSIONAL ENGINEER WHOSE STAMP AND SIGNATURE ARE AFFIXED TO THIS DOCUMENT.

THIS REVIEW DOES NOT CONSTITUTE APPROVAL OF ANY PRIVATE ON-SITE IMPROVEMENTS WHICH MAY BE SHOWN. CONSTRUCTION CANNOT COMMENCE UNTIL ALL REQUIRED DRAINAGE/TRAFFIC REPORT(S), FINAL DEVELOPMENT PLAN(S), SPECIAL REVIEW(S), GRADING PERMIT, AND/OR OTHER PERMITS ARE COMPLETE, APPROVED AND ON FILE WITH THE TOWN OF PARKER.

TOWN OF PARKER, DIRECTOR OF ENGINEERING _____ DATE _____



BRIAN P. WILSON
COLORADO P.E. 0050067

THE DISTRICT INSPECTOR MUST BE NOTIFIED AT LEAST 48 HOURS PRIOR TO START OF CONSTRUCTION. CALL PARKER WATER AND SANITATION DISTRICT AT 303-841-4627. THE DISTRICT WILL PROVIDE PERIODIC INSPECTIONS OF THE WORK. 24 HOUR NOTICE TO THE INSPECTOR IS REQUIRED FOR SCHEDULED INSPECTIONS. ANY WORK ACCOMPLISHED WITHOUT THE APPROVAL OF THE INSPECTOR WILL BE SUBJECT TO REJECTION.

REVIEWED FOR CONFORMANCE TO PARKER WATER AND SANITATION DISTRICT STANDARDS.

BY: _____ DATE _____
(DISTRICT REPRESENTATIVE)

APPROVED FOR CONSTRUCTION:
PARKER WATER AND SANITATION DISTRICT

BY: _____ DATE _____
(DISTRICT ENGINEER)

FIRE DEPARTMENT APPROVAL

ALL FIRE HYDRANTS SHALL BE INSTALLED ACCORDING TO WATER UTILITY STANDARDS. THE NUMBER AND LOCATIONS OF THE FIRE HYDRANTS AS SHOWN ON THE OVERALL UTILITY PLAN ARE CORRECT AS SPECIFIED BY THE TOWN OF PARKER, COMMUNITY DEVELOPMENT DEPARTMENT.

(FIRE CODE OFFICIAL OR DESIGNATED REPRESENTATIVE) _____ DATE _____
(NOTE: UNDERGROUND FIRE LINE (UFL) SUBMITTAL DOCUMENTS MUST MEET THE REQUIREMENTS OF NFPA24 WHEN SUBMITTING FOR REVIEW.)

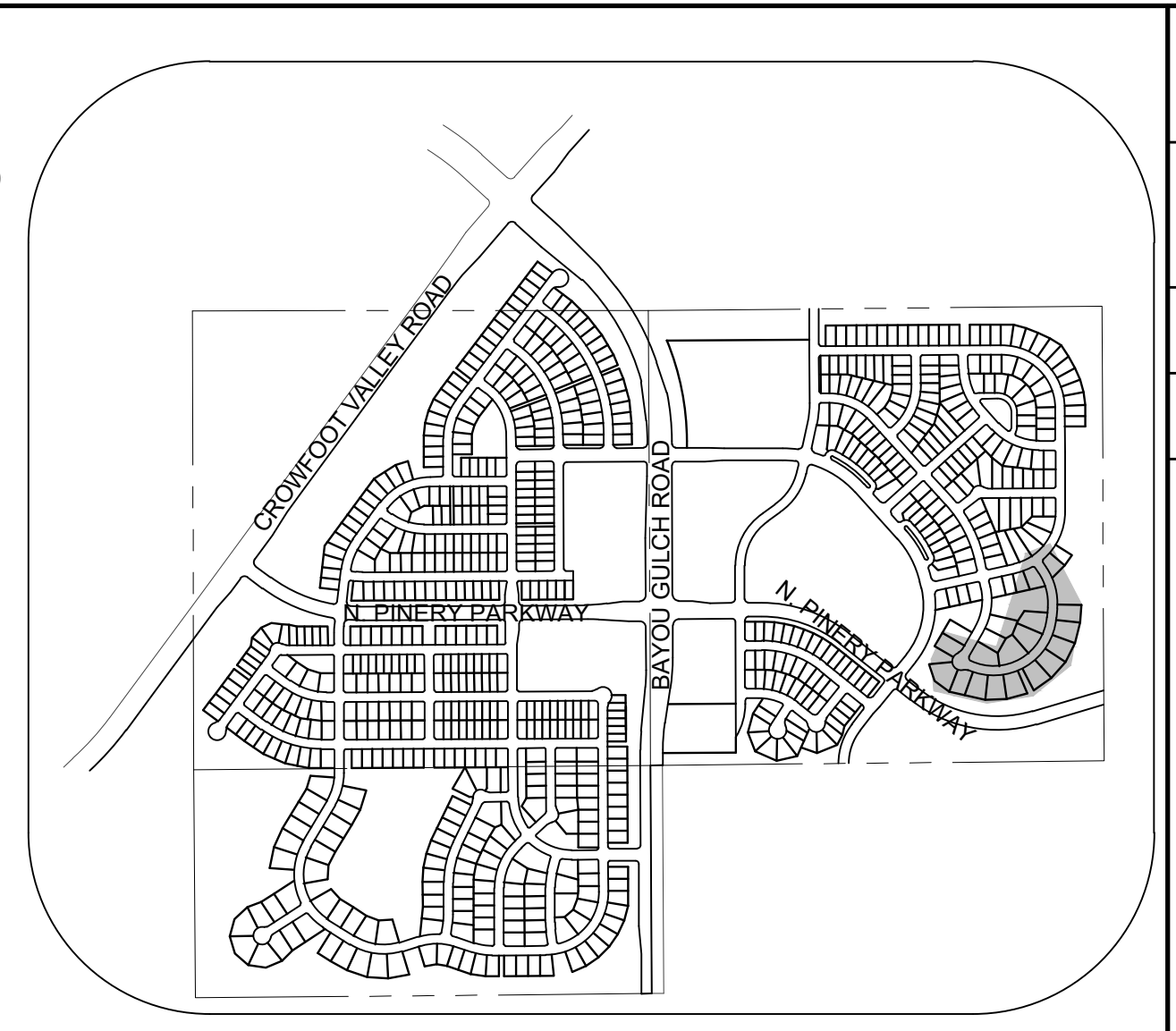
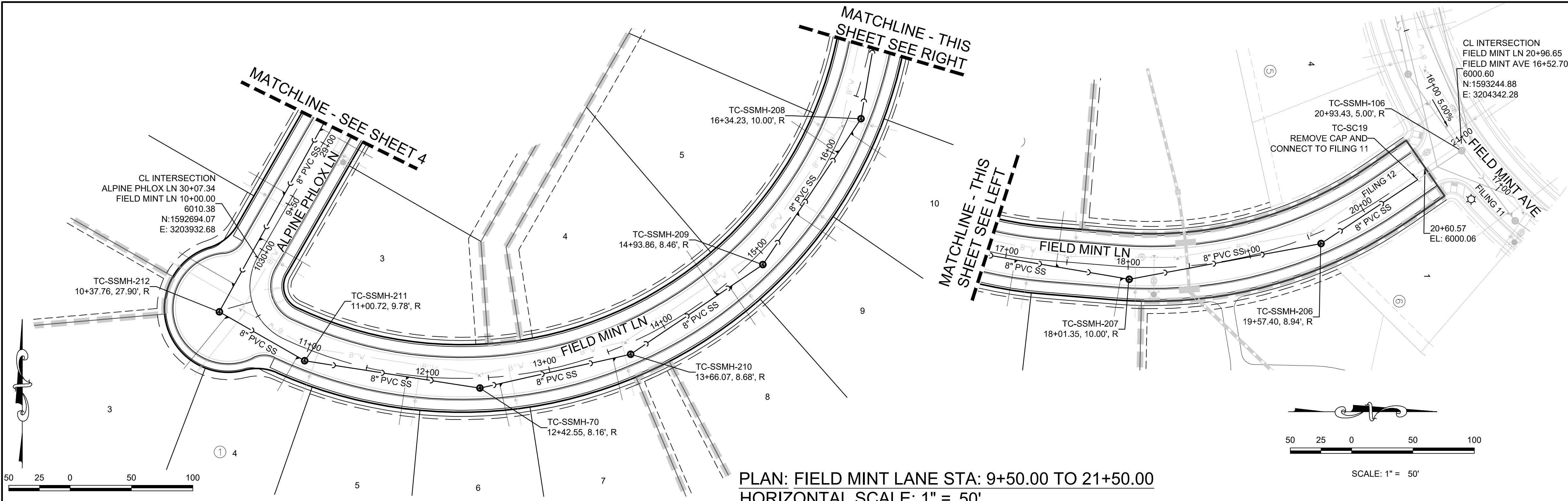
BENCHMARK
DOUGLAS COUNTY CONTROL POINT KNOWN AS 1.060032, BEING A 3-1/4" ALUMINUM CAP, BEING LOCATED IN THE SOUTHWEST QUARTER OF SECTION 33, TOWNSHIP 6 SOUTH, RANGE 66 WEST OF THE SIXTH PRINCIPAL MERIDIAN, HAVING A PUBLISHED ELEVATION OF 1799.2870 METERS (5903.13 FEET) NAVD '88 DATUM.

BASIS OF BEARINGS:
THE EAST LINE OF THE NORTHEAST QUARTER OF SAID SECTION 9 BEING MONUMENTED AT THE NORTHEAST CORNER OF SAID SECTION 9 BY A 3-1/4" ALUMINUM CAP STAMPED LS 23053 AND AT THE EAST QUARTER CORNER OF SAID SECTION 9 BY A 2-1/2" ALUMINUM CAP STAMPED LS 6935 BEING CONSIDERED TO BEAR SOUTH 00°15'06" EAST, 2648.70 FEET.

N:\PROJECTS\SSR\ENGINEERING\SSR\SSR\12\AREA UTILITY PLAN.DWG, BP/WILSON, 4/20/2021 5:31 PM

CALL 811
TWO WORKING DAYS
BEFORE YOU DIG
UNCC 1-800-922-1987
UTILITY NOTIFICATION
CENTER OF COLORADO

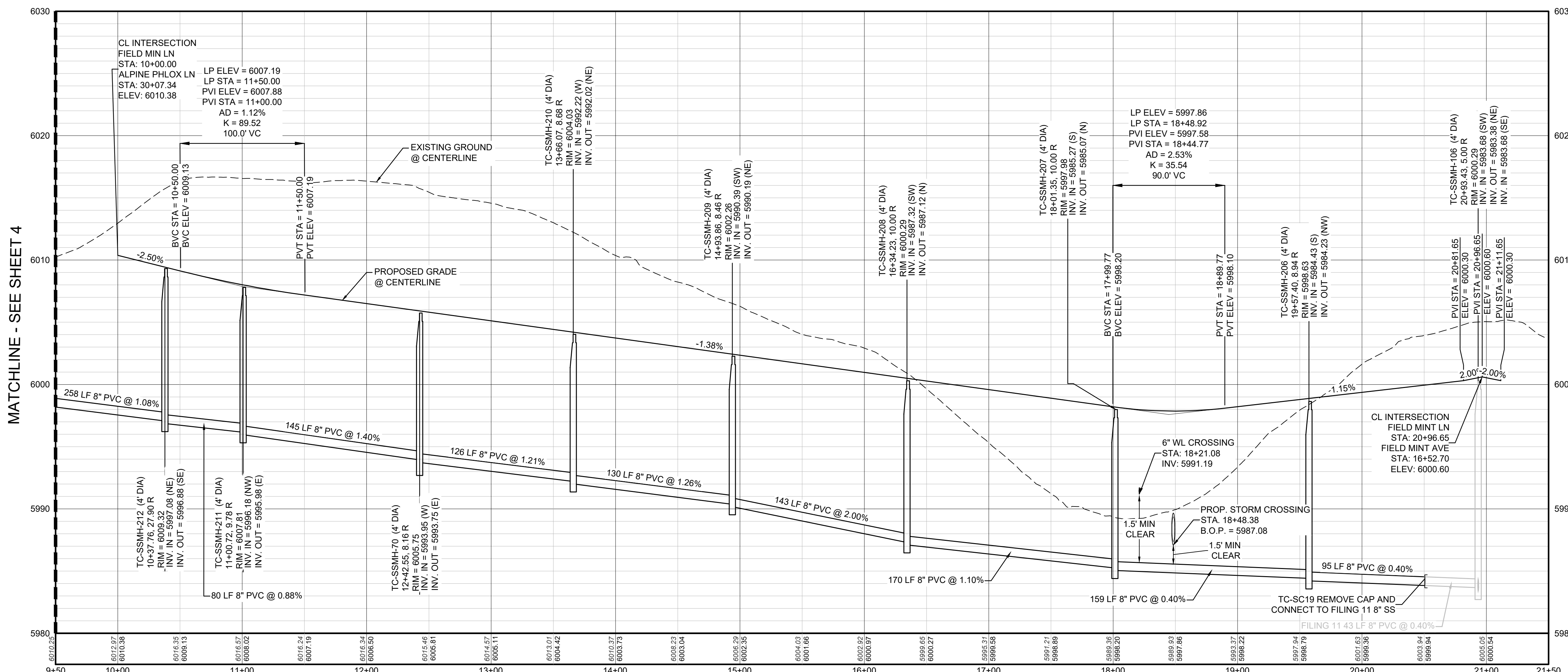
10333 E. Dry Creek Rd Suite 240 Englewood, CO 80112 Tel: 720.482.952 www.cvlinc.net westwoodps.com	HR 935 LLC 7353 South Alton Way CENTENNIAL, CO 80112	TRAILS AT CROWFOOT FILING 12 CONSTRUCTION DRAWINGS AREA UTILITY PLAN	SCALE: AS SHOWN FILE NO: 8130283701	DATE: SEPTEMBER 2017	NO. _____	DATE _____	INT. _____	DATE _____	APPR. _____	DATE _____
3										



KEYMAP
N.T.S.

LEGEND

②	BLOCK NUMBER	△	PROPOSED RANGE POINT
Ⓐ	LOT TYPE	---	CENTERLINE
6	PROPOSED BUTTERFLY VALVE	---	RIGHT-OF-WAY
⌈	PROPOSED CAP WITH END OF LINE BLOWOFF	---	PROPERTY LINE
⌋	PROPOSED REDUCER	---	EDGE OF PAVEMENT
⊕	PROPOSED VALVE	→	PROPOSED DIRECTION OF FLOW
⊖	PROPOSED FIRE HYDRANT	1.0%	PROPOSED SLOPE & DIRECTION
⊕ ⊖	PROPOSED WL FITTING WITH THRUST BLOCK	5615	EXISTING 5' CONTOUR
⊕ ⊖	PROPOSED FLARED END SECTION	5616	EXISTING 1' CONTOUR
⊕ ⊖	PROPOSED LOW POINT BLOW-OFF	5620	PROPOSED 5' CONTOUR
⊕ ⊖	PROPOSED AIR VALVE	5607	PROPOSED 1' CONTOUR
⊕ ⊖	FUTURE PHASE VALVE	---	PROPOSED STORM DRAIN
⊕ ⊖	FUTURE FIRE HYDRANT	---	PROPOSED SEWER LINE WITH MANHOLE
⊕ ⊖	PROPOSED LIGHT POLE	---	PROPOSED SEWER LATERAL
⊕ ⊖	PROPOSED SIDEWALK	---	PROPOSED WATER LINE
⊕ ⊖	PROPOSED SIDEWALK RAMP	---	PROPOSED WATER LATERAL W/ METER
10.00	EXISTING ELEVATION	---	SECTION LINE
10.00	PROPOSED DESIGN ELEVATION	---	FILING BOUNDARY
⊕ ⊖	PROPOSED STORM DRAIN INLET	---	FO
⊕ ⊖	PROPOSED STORM DRAIN MANHOLE	---	OH
		---	TEL
		---	EXISTING FIBER OPTIC LINE
		---	EXISTING OVERHEAD POWER
		---	EXISTING TELEPHONE LINE
		---	PWSD EASEMENT
		---	TYP. EASEMENT



PROFILE: FIELD MINT LN STA: 9+50.00 TO 21+50.00
HORIZONTAL: 1" = 50'
VERTICAL: 1" = 5'

ABBREVIATIONS

AD	ANGLE DIFFERENCE	MH	MANHOLE
AV	AIR VAC RELEASE VALVE	N.T.S.	NOT TO SCALE
BVC	BEGIN VERTICAL CURVE	PVC	POLYVINYL CHLORIDE
BVP	BEGIN VERTICAL PROFILE	PVI	PT. OF VERTICAL INTERSECTION
CBD	CAP WITH BLOW OFF	PVT	PT. OF VERTICAL TANGENT
CRR	CURB RETURN RADIUS	RCBC	REINFORCED CONCRETE BOX CULVERT
EL	ELEVATION	ROP	REINFORCED CONCRETE PIPE
EP	EDGE OF PAVEMENT	ROW	RIGHT OF WAY
EVC	END VERTICAL CURVE	SC	SANITARY CAP
EVP	END VERTICAL PROFILE	SD	STORM DRAIN
FG	FINISHED GROUND	SL	SECTION LINE
FH	FIRE HYDRANT	SS	SANITARY SEWER
FL	FLOW LINE	STA	STATION
GV	GATE VALVE	T.O.P.	TOP OF PIPE
HCR	HANDICAP CURB RAMP	UC	UTILITY EASEMENT
HP	HIGH POINT	VC	VERTICAL CURVE
INV	INVERT	WL	WATER LINE
K	CURVATURE COEFFICIENT	WLC	WATER LINE CONNECTION
LF	LINEAR FEET	WSE	WATER SURFACE ELEVATION

1. SEE SHEET 3 FOR SANITARY SERVICE TABLES

CALL 811
TWO WORKING DAYS
BEFORE YOU DIG
UNCC
1-800-922-1987

BENCHMARK
DOUGLAS COUNTY CONTROL POINT KNOWN AS 1.060032, BEING A 3-1/4" ALUMINUM CAP, BEING LOCATED IN THE SOUTHWEST QUARTER OF SECTION 33, TOWNSHIP 6 SOUTH, RANGE 66 WEST OF THE SIXTH PRINCIPAL MERIDIAN, HAVING A PUBLISHED ELEVATION OF 1799.2870 METERS (5903.13 FEET) NAVD '88 DATUM.

BASIS OF BEARINGS:
THE EAST LINE OF THE NORTHEAST QUARTER OF SAID SECTION 9 BEING MONUMENTED AT THE NORTHEAST CORNER OF SAID SECTION 9 BY A 3-1/4" ALUMINUM CAP STAMPED LS 23053 AND AT THE EAST QUARTER CORNER OF SAID SECTION 9 BY A 2-1/2" ALUMINUM CAP STAMPED LS 6935 BEING CONSIDERED TO BEAR SOUTH 00°15'06" EAST, 2648.70 FEET.

PREPARED UNDER THE SUPERVISION OF

BRIAN P. WILSON
COLORADO P.E. 0050067

SHEET NUMBER	5	
	DATE: SEPTEMBER 2017	FILE NO: 8130283701
DRAWN BY: JLR	CHECKED BY: JLU	SCALE: AS SHOWN
NO. REVISIONS	DATE	INIT
APPROVED	DATE	INIT
DATE		

10333 E. Dry Creek Rd.
Suite 240
Englewood, CO 80112
Tel: 720.482.952
www.cvlinc.net
westwoodjpa.com

HR 935 LLC
7353 South Alton Way
CENTENNIAL, CO 80112

TRAILS AT CROWFOOT
FILING 12 CONSTRUCTION DRAWINGS
SANITARY SEWER PLAN AND PROFILE
FIELD MINT LANE

ALUMINUM STEP

NOTES:

- ALUMINUM ALLOY SPECIFICATIONS
 - F35C-90-A-200/9 (ALUMINUM-MAGNESIUM-SILICATE ALLOY)
 - MINIMUM TENSILE STRENGTH= 35,000 P.S.I.
 - MINIMUM YIELD STRENGTH= 35,000 P.S.I.
 - MINIMUM ELONGATION=10% IN 2 INCHES
- MINIMUM LOAD CAPACITY (APPLIED AT CENTER OF STEP)
 - 1000 LB. WITH 6" PROJECTION FROM WALL.
 - 1500 LB. WITH 4" PROJECTION FROM WALL.
- WEIGHT PER STEP=2.23 POUNDS
- STEPS TO BE CAST, UNALTERED, IN MANHOLE WALL IN STRAIGHT LINE, VERTICALLY, AT THE SAME TIME THE BARREL OR CONE SECTIONS ARE CAST.
- VERTICAL SPACING BETWEEN STEPS SHALL BE CONSISTENT IN EACH INDIVIDUAL MANHOLE.
- TOE POCKETS ARE REQUIRED IN STORM SEWER MANHOLES IF TOP OF BENCH IS MORE THAN 18" ABOVE INVERT. TOE POCKETS ARE NOT REQUIRED IN SANITARY SEWER MANHOLES UNLESS OTHERWISE SPECIFIED.

TYPICAL INSTALLATION

TOE POCKET DETAILS

STANDARD EXTRUDED ALUMINUM MANHOLE STEP

PARKER WATER & SANITATION DISTRICT
STANDARD EXTRUDED ALUMINUM MANHOLE STEP

SCALE: NONE DATE: 2/98
APPROVED: PVR 01/16 10/16
DIRECTOR OF ENGINEERING

SHEET 53.10

PIN FOR PRESS STEP

POLYPROPYLENE REINFORCED PLASTIC STEP

NOTES:

- ASTM SPECIFICATIONS:
 - ASTM C-419
 - ASTM A-815 GRADE 60 (STEEL ROD)
 - ASTM 2140-99, TYPE II, GRADE 180 (POLYPROPYLENE)
- STEPS INSTALLED IN MANHOLE BARREL SECTIONS OR VERTICAL WALLS OF STRUCTURE SHALL HAVE A 3/4" RICH LEG AND SHALL PROJECT FROM THE WALL 8-5/8" INCHES.
- STEPS INSTALLED IN MANHOLE CONE SECTIONS SHALL HAVE AN 8-1/4" RICH LEG AND SHALL PROJECT FROM THE WALL 4-7/8" INCHES.
- ALL STEPS SHALL HAVE A PENETRATION DEPTH INTO THE WALL OF 3-3/8" INCHES.
- STEPS SHALL BE INSTALLED BY THE "PRESS-FIT" METHOD UTILIZING A SPECIALLY FABRICATED PIN TO FORM THE INSERT HOLE AS SHOWN.
- INSTALLED STEPS SHALL BE CAPABLE OF WITHSTANDING A PULL OUT FORCE OF 2500 P.S.I. PER LEG FOR A MINIMUM PERIOD OF TWO MINUTES.
- STEPS SHALL BE INSTALLED BY THE "PRESS-FIT" METHOD EXCLUSIVELY FOLLOWING MANUFACTURER'S RECOMMENDED PROCEDURE AND SHALL NOT BE GROUTED IN PLACE.

PARKER WATER & SANITATION DISTRICT
POLYPROPYLENE REINFORCED PLASTIC MANHOLE STEP

SCALE: NONE DATE: 2/05
APPROVED: PVR 01/16 10/16
DIRECTOR OF ENGINEERING

SHEET 53.11

CAST ALUMINUM MANHOLE STEP

NOTES:

- THE CAST ALUMINUM MANHOLE STEP SHALL ONLY BE USED WHEN SPECIFIED ON THE DRAWINGS.
- ALUMINUM ALLOY SPECIFICATIONS:
 - F35C-90-A-200/9 (ALUMINUM-MAGNESIUM-SILICATE ALLOY)
 - MIN. TENSILE STRENGTH= 40 K.S.I.
 - MIN. YIELD STRENGTH= 20 K.S.I.
 - MIN. SHEAR STRENGTH= 27.45 K.S.I.
 - ELONGATION= 10% IN 2 INCHES
 - BRIEFLY HARDNESS= 70
- MINIMUM LOAD CAPACITY, STEP SPACING AND ALIGNMENT, TOE POCKET DETAILS AND OTHER APPLICABLE NOTES OR DETAILS SPECIFIED FOR EXTRUDED ALUMINUM MANHOLE STEP SHALL ALSO APPLY TO THIS STANDARD.
- MIN. WT. = 2.0 LB.

PARKER WATER & SANITATION DISTRICT
CAST ALUMINUM MANHOLE STEP

SCALE: NONE DATE: 2/98
APPROVED: PVR 01/16 10/16
DIRECTOR OF ENGINEERING

SHEET 53.12

MARKER POST DETAIL

PARKER WATER & SANITATION DISTRICT
MARKER POST DETAIL

SCALE: NONE DATE: 2/98
APPROVED: PVR 2/02 10/16
DIRECTOR OF ENGINEERING

SHEET 53.13

MARKER POST DETAIL

PARKER WATER & SANITATION DISTRICT
MARKER POST DETAIL

SCALE: NONE DATE: 2/98
APPROVED: PVR 2/02 10/16
DIRECTOR OF ENGINEERING

SHEET 53.13

TYPICAL TRENCH DETAIL

NOTES:

- Sloping or benching of trench side walls, where permitted shall be in accordance with applicable Federal, State and Local safety regulations.
- Trench shall be broomed and shored as necessary to allow safe working conditions or to protect adjacent utilities, structures, etc. Unless otherwise specified on the plans, no pavement will be made for removal, replacement or relocation of existing gutters, utilities, sidewalks, structures, etc. outside the maximum limits of excavation as shown and the contractor shall be responsible for protection of same.
- If excavation "B₁" is < 5', then existing asphalt pavement shall be removed and replaced up to the gutter. Maximum asphalt shall be cut off at top of pipe and left in place.

PARKER WATER & SANITATION DISTRICT
SEWER TRENCHING AND BEDDING DETAIL

SCALE: NONE DATE: 2/98
APPROVED: PVR 5/98 1/16 12/96
DIRECTOR OF ENGINEERING

SHEET 54.1

CONCRETE ARCH

CLASS 'B' BEDDING

PARKER WATER & SANITATION DISTRICT
TRENCHING AND BEDDING DETAIL - CLASS "A"

SCALE: NONE DATE: 2/98
APPROVED: PVR 1/16 10/16
DIRECTOR OF ENGINEERING

SHEET 54.2

CONCRETE CRADLE

PARKER WATER & SANITATION DISTRICT
TRENCHING AND BEDDING DETAIL - CLASS "A"

SCALE: NONE DATE: 2/98
APPROVED: PVR 1/16 10/16
DIRECTOR OF ENGINEERING

SHEET 54.2

CONCRETE ARCH

CLASS 'B' BEDDING

PARKER WATER & SANITATION DISTRICT
TRENCHING AND BEDDING DETAIL - CLASS "B"

SCALE: NONE DATE: 2/98
APPROVED: PVR 5/98 2/02 10/16
DIRECTOR OF ENGINEERING

SHEET 54.3

CONCRETE CRADLE

PARKER WATER & SANITATION DISTRICT
TRENCHING AND BEDDING DETAIL - CLASS "B"

SCALE: NONE DATE: 2/98
APPROVED: PVR 5/98 2/02 10/16
DIRECTOR OF ENGINEERING

SHEET 54.4

ROCK EXCAVATION

CLASS 'B' BEDDING

PARKER WATER & SANITATION DISTRICT
TRENCHING AND BEDDING DETAIL - CLASS "B"

SCALE: NONE DATE: 2/98
APPROVED: PVR 5/98 2/02 10/16
DIRECTOR OF ENGINEERING

SHEET 54.4

CONCRETE CRADLE

PARKER WATER & SANITATION DISTRICT
TRENCHING AND BEDDING DETAIL - CLASS "B"

SCALE: NONE DATE: 2/98
APPROVED: PVR 5/98 2/02 10/16
DIRECTOR OF ENGINEERING

SHEET 54.4

ROCK EXCAVATION

CLASS 'B' BEDDING

PARKER WATER & SANITATION DISTRICT
TRENCHING AND BEDDING DETAIL - CLASS "B"

SCALE: NONE DATE: 2/98
APPROVED: PVR 5/98 2/02 10/16
DIRECTOR OF ENGINEERING

SHEET 54.4

CONCRETE CRADLE

PARKER WATER & SANITATION DISTRICT
TRENCHING AND BEDDING DETAIL - CLASS "B"

SCALE: NONE DATE: 2/98
APPROVED: PVR 5/98 2/02 10/16
DIRECTOR OF ENGINEERING

SHEET 54.4

CONCRETE ENCASEMENT FOR SANITARY SEWERS

PARKER WATER & SANITATION DISTRICT
TRENCHING AND BEDDING DETAIL - CLASS "B"

SCALE: NONE DATE: 2/98
APPROVED: PVR 5/98 2/02 10/16
DIRECTOR OF ENGINEERING

SHEET 54.5

CONCRETE CRADLE

PARKER WATER & SANITATION DISTRICT
TRENCHING AND BEDDING DETAIL - CLASS "B"

SCALE: NONE DATE: 2/98
APPROVED: PVR 5/98 2/02 10/16
DIRECTOR OF ENGINEERING

SHEET 54.5

CONCRETE ENCASEMENT FOR SANITARY SEWERS

PARKER WATER & SANITATION DISTRICT
TRENCHING AND BEDDING DETAIL - CLASS "B"

SCALE: NONE DATE: 2/98
APPROVED: PVR 5/98 2/02 10/16
DIRECTOR OF ENGINEERING

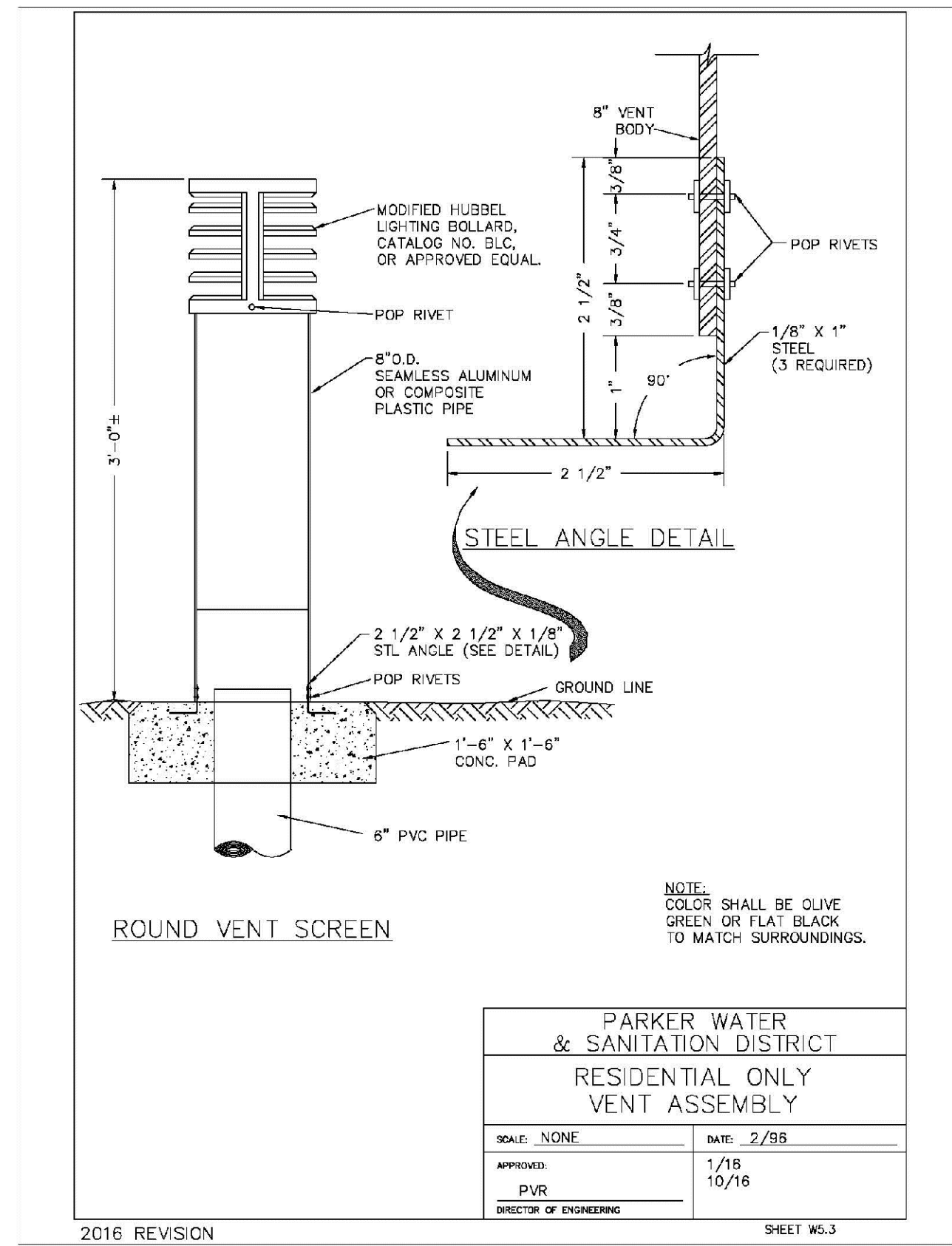
SHEET 54.5

CONCRETE CRADLE

PARKER WATER & SANITATION DISTRICT
TRENCHING AND BEDDING DETAIL - CLASS "B"

SCALE: NONE DATE: 2/98
APPROVED: PVR 5/98 2/02 10/16
DIRECTOR OF ENGINEERING

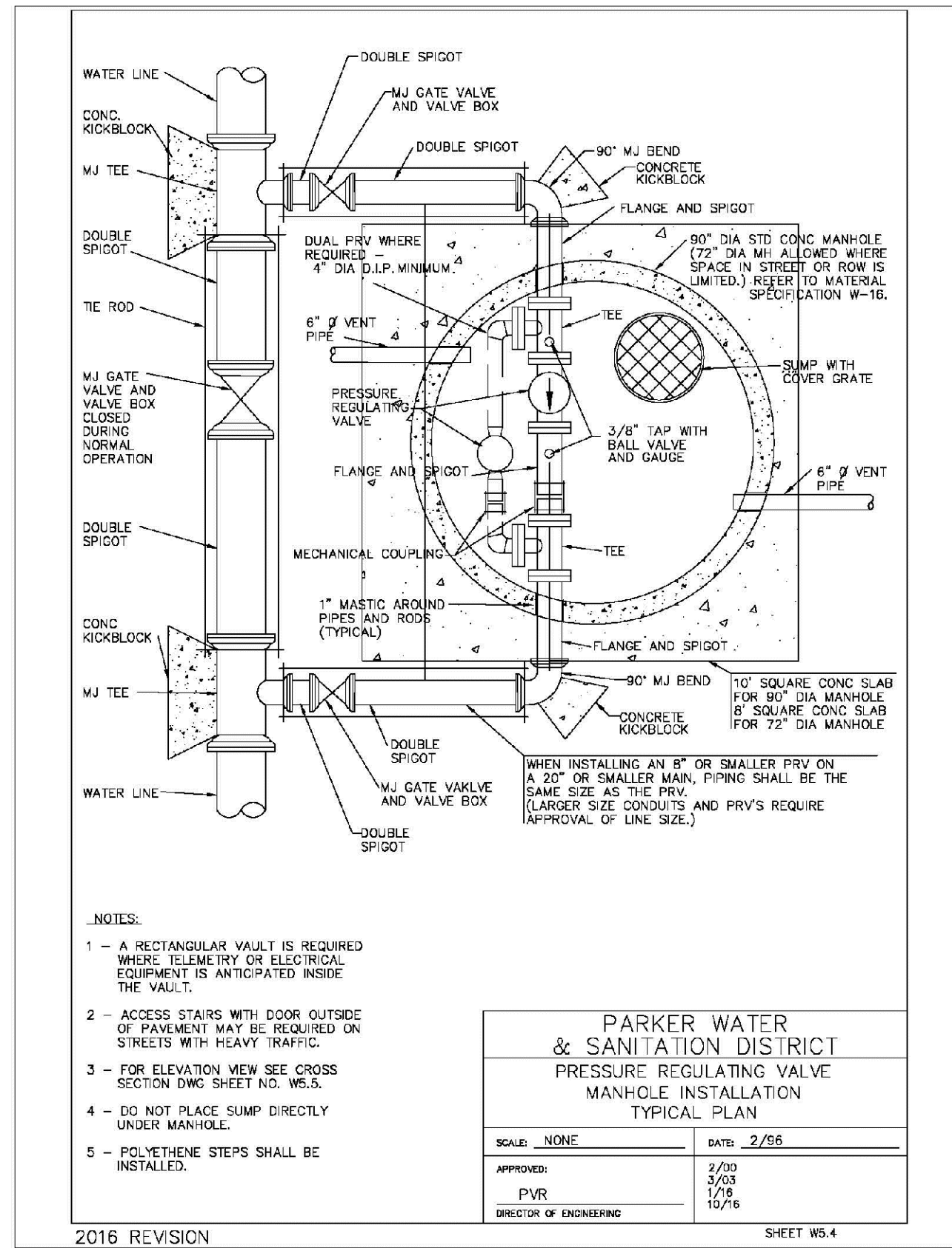
SHEET 54.5



PARKER WATER & SANITATION DISTRICT
RESIDENTIAL ONLY
VENT ASSEMBLY

SCALE: NONE	DATE: 2/98
APPROVED: PVR	1/18 10/18
DIRECTOR OF ENGINEERING	

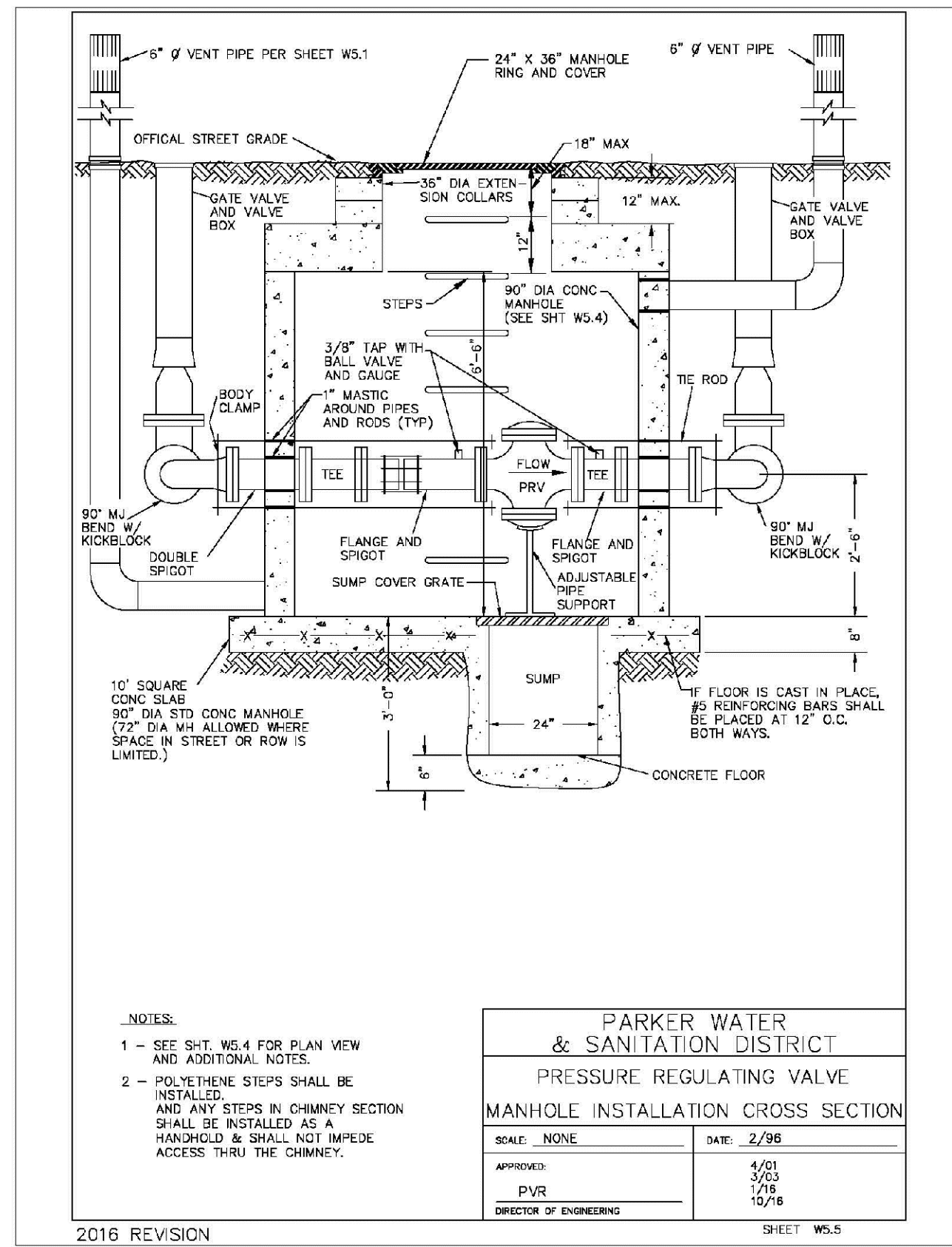
2016 REVISION



PARKER WATER & SANITATION DISTRICT
PRESSURE REGULATING VALVE
MANHOLE INSTALLATION
TYPICAL PLAN

SCALE: NONE	DATE: 2/98
APPROVED: PVR	2/03 3/03 4/01 10/18
DIRECTOR OF ENGINEERING	

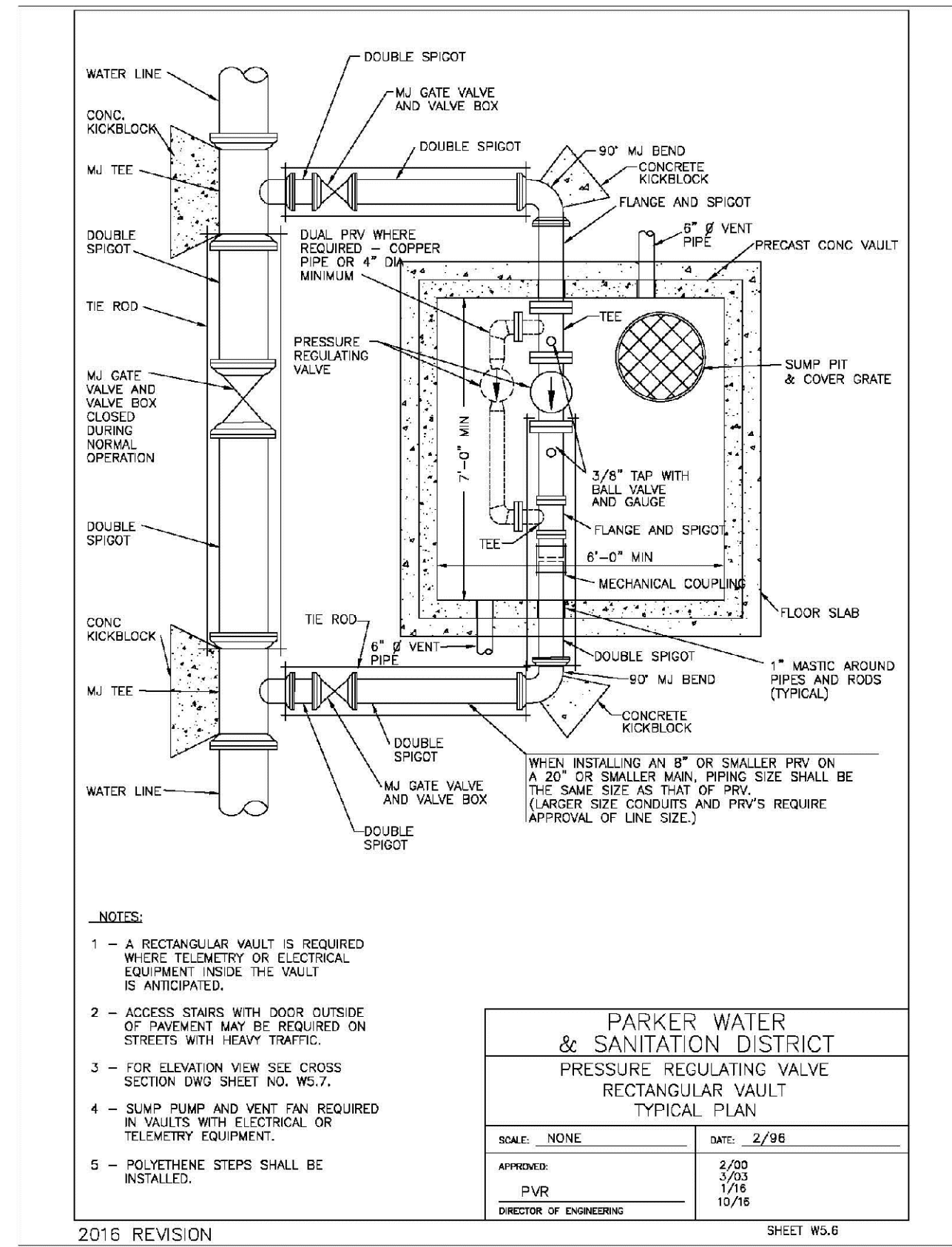
2016 REVISION



PARKER WATER & SANITATION DISTRICT
PRESSURE REGULATING VALVE
MANHOLE INSTALLATION
CROSS SECTION

SCALE: NONE	DATE: 2/98
APPROVED: PVR	2/03 3/03 4/01 10/18
DIRECTOR OF ENGINEERING	

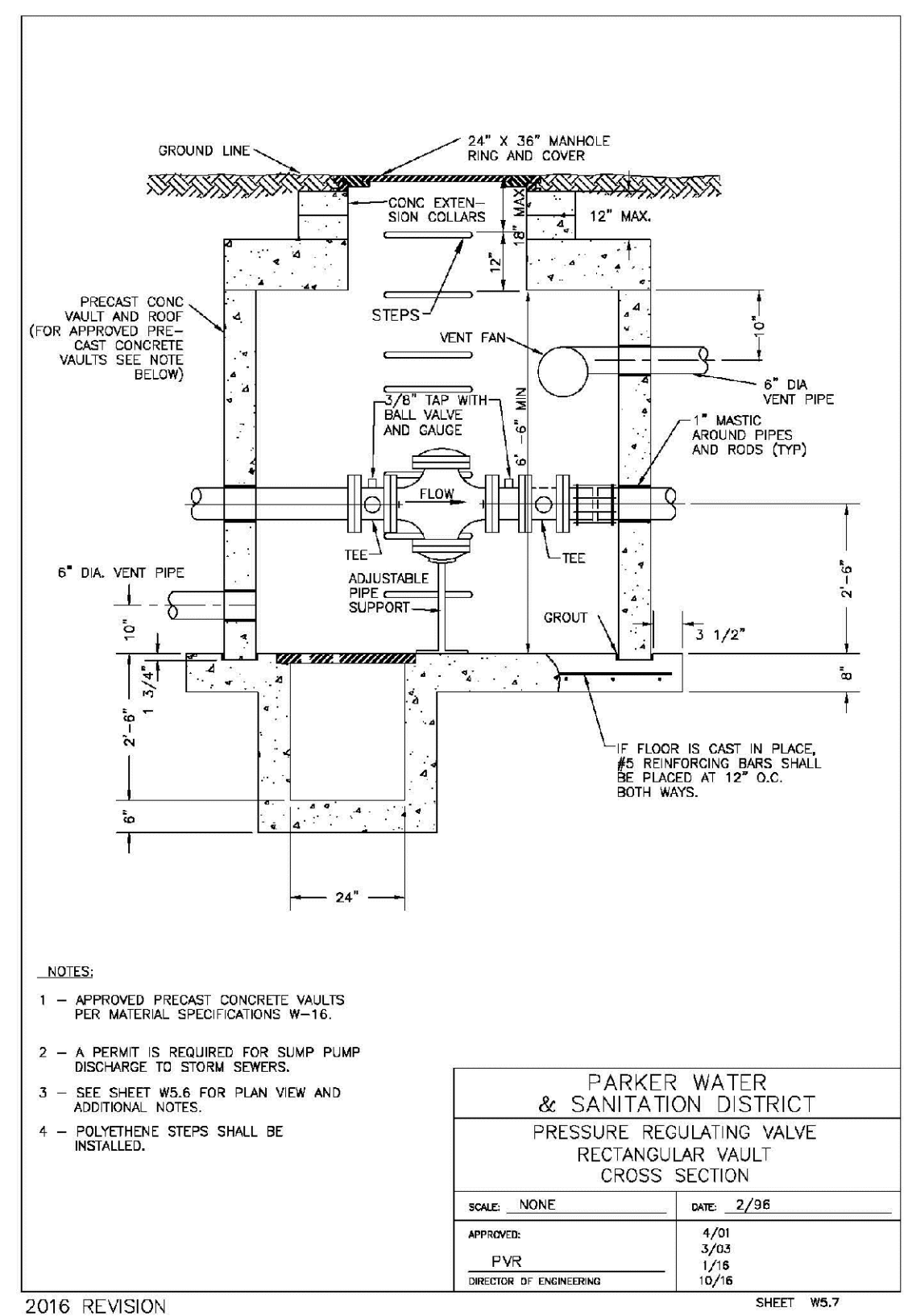
2016 REVISION



PARKER WATER & SANITATION DISTRICT
PRESSURE REGULATING VALVE
RECTANGULAR VAULT
TYPICAL PLAN

SCALE: NONE	DATE: 2/98
APPROVED: PVR	2/03 3/03 4/01 10/18
DIRECTOR OF ENGINEERING	

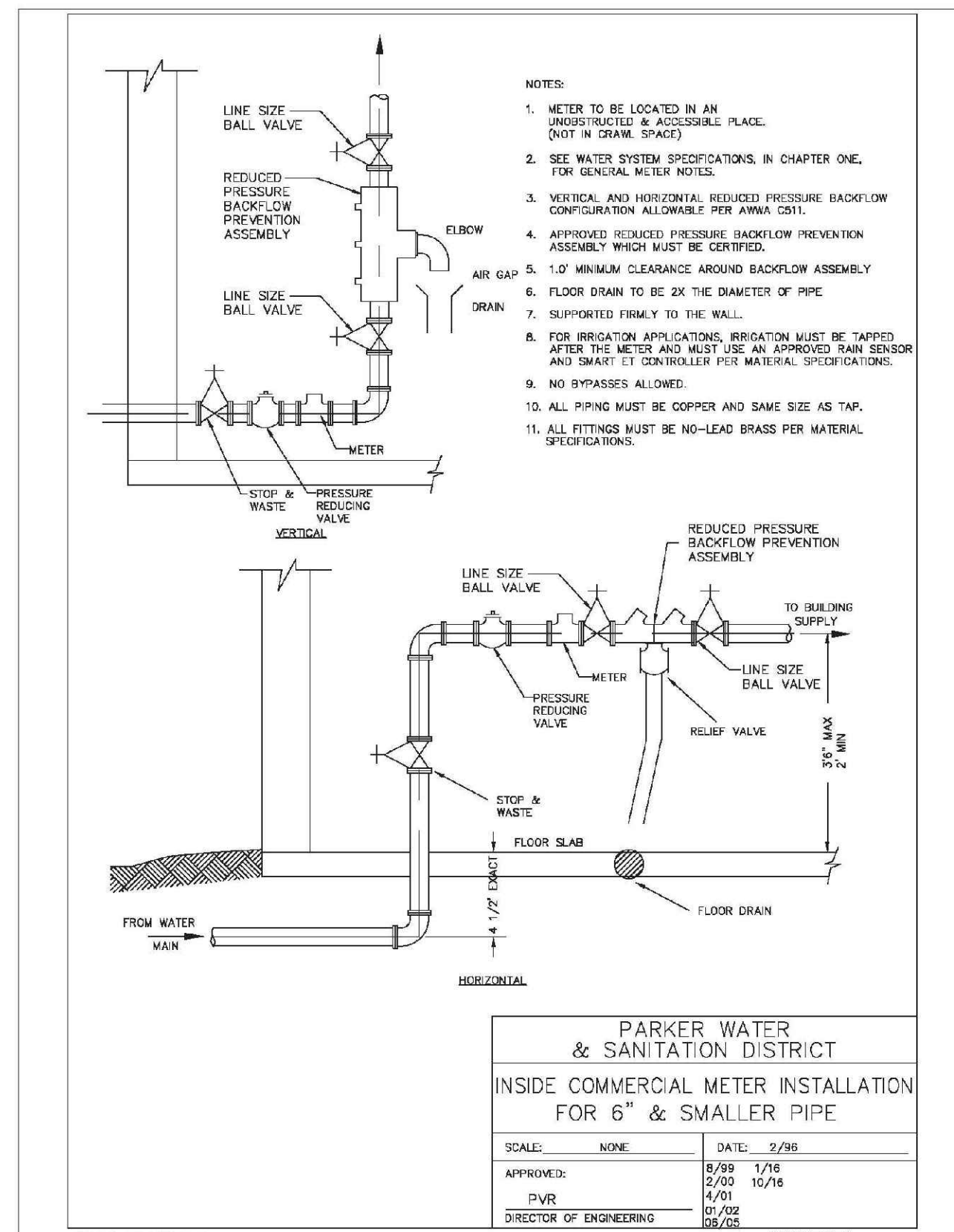
2016 REVISION



PARKER WATER & SANITATION DISTRICT
PRESSURE REGULATING VALVE
RECTANGULAR VAULT
CROSS SECTION

SCALE: NONE	DATE: 2/98
APPROVED: PVR	2/03 3/03 4/01 10/18
DIRECTOR OF ENGINEERING	

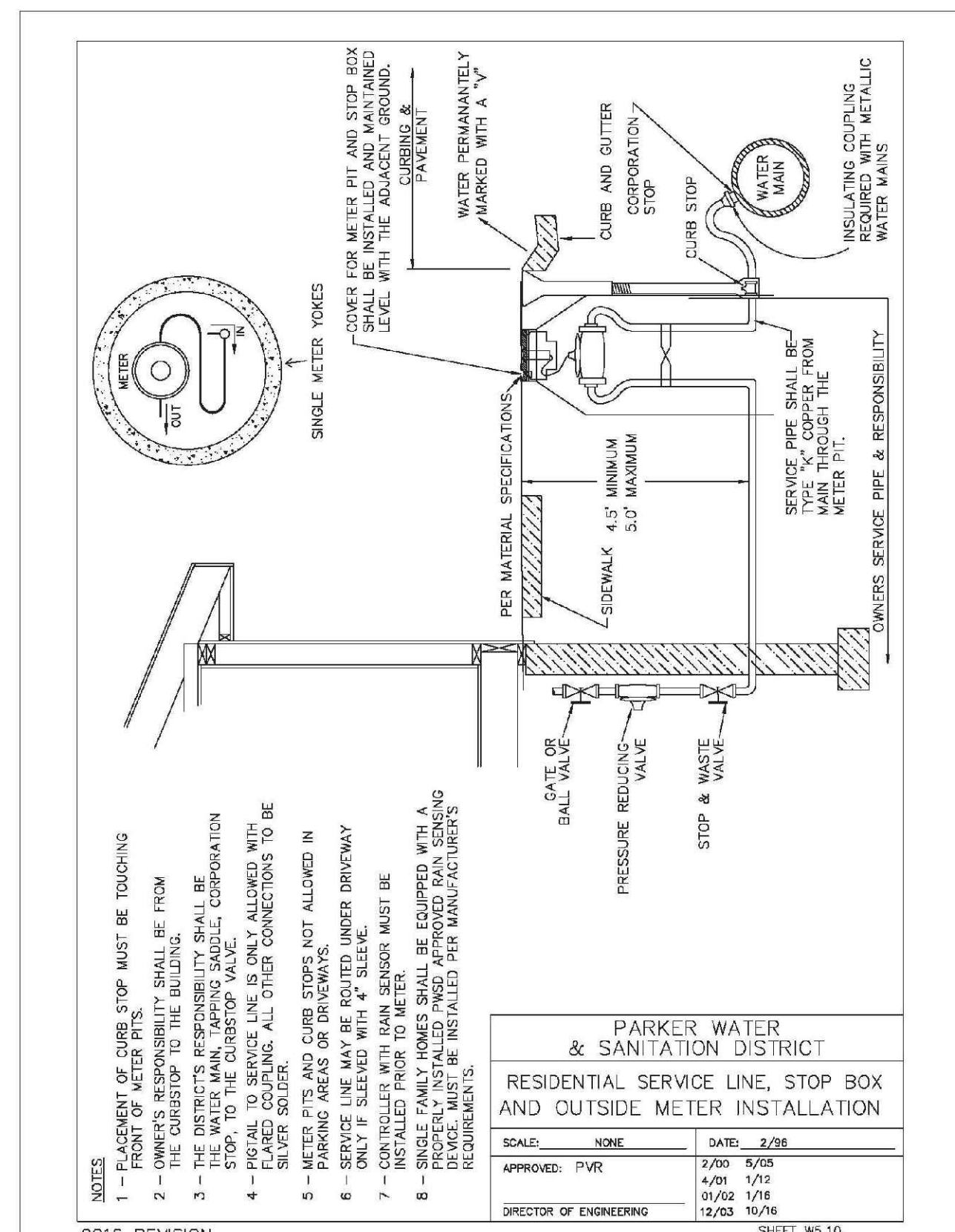
2016 REVISION



PARKER WATER & SANITATION DISTRICT
INSIDE COMMERCIAL METER INSTALLATION
FOR 6" & SMALLER PIPE

SCALE: NONE	DATE: 2/98
APPROVED: PVR	8/89 1/76 2/03 4/01 10/18
DIRECTOR OF ENGINEERING	

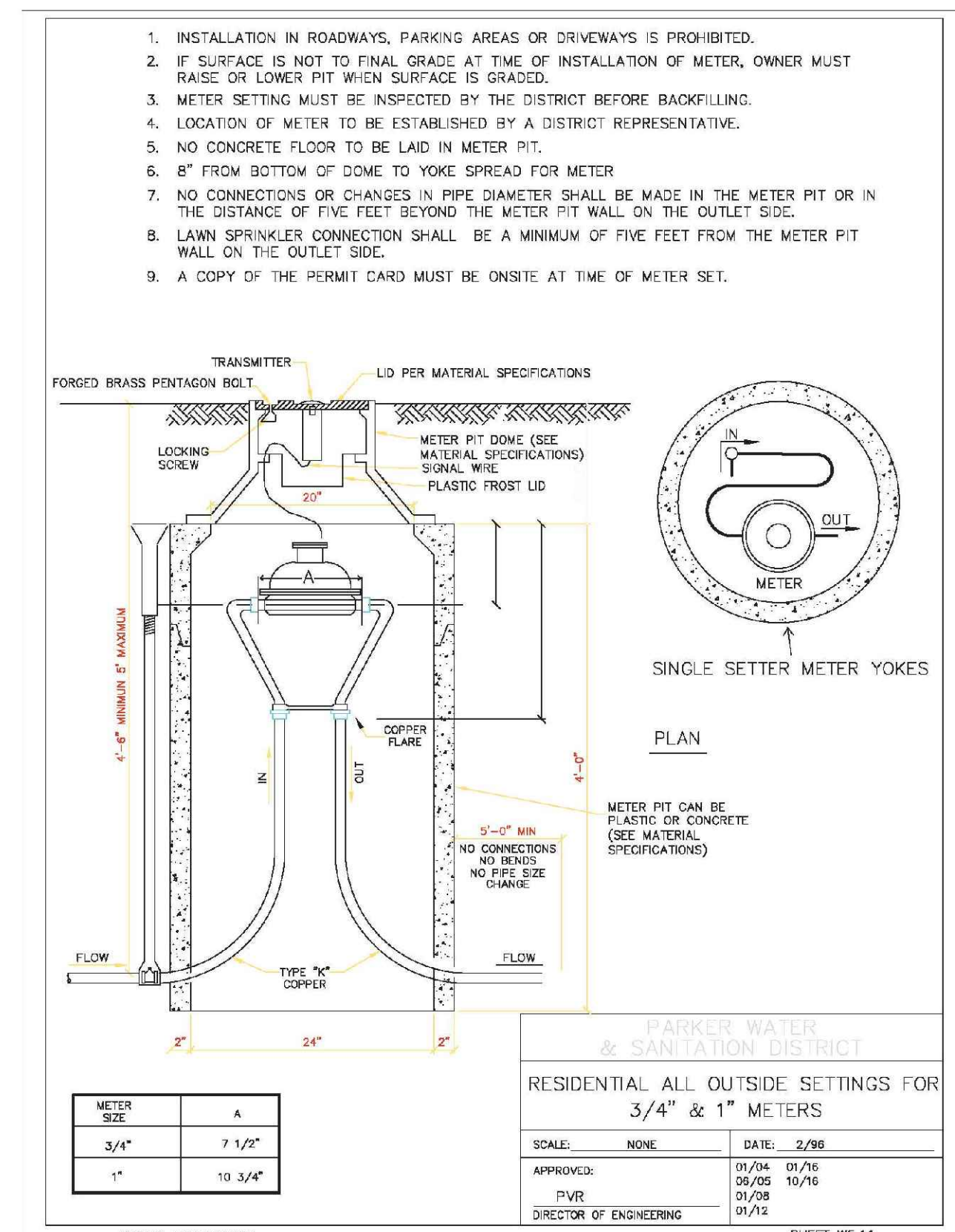
2016 REVISION



PARKER WATER & SANITATION DISTRICT
RESIDENTIAL SERVICE LINE, STOP BOX
AND OUTSIDE METER INSTALLATION

SCALE: NONE	DATE: 2/98
APPROVED: PVR	2/00 5/05 4/01 1/75 01/02 1/16 12/03 10/16
DIRECTOR OF ENGINEERING	

2016 REVISION



PARKER WATER & SANITATION DISTRICT
RESIDENTIAL ALL OUTSIDE SETTINGS FOR
3/4" & 1" METERS

SCALE: NONE	DATE: 2/98
APPROVED: PVR	01/04 01/16 04/05 10/16 01/08 01/02
DIRECTOR OF ENGINEERING	

2016 REVISION

N:\PROJECTS\SSR\SSR\ENGINEERING\SSR\SSR\2016\WATER AND SANITATION\12 WATER DETAILS.DWG.CDD\VA_4202021.5.07.PM

CALL 811
TWO WORKING DAYS
BEFORE YOU DIG
UNCC 1-800-922-1987
UTILITY NOTIFICATION
CENTER OF COLORADO

SHEET NUMBER	DRAWN BY: JF	SCALE: AS SHOWN	CHECKED BY: JJJ	DATE: SEPTEMBER 2017	FILE NO: 8130283701	Revisions	Date	Appr.	Date
						No.			

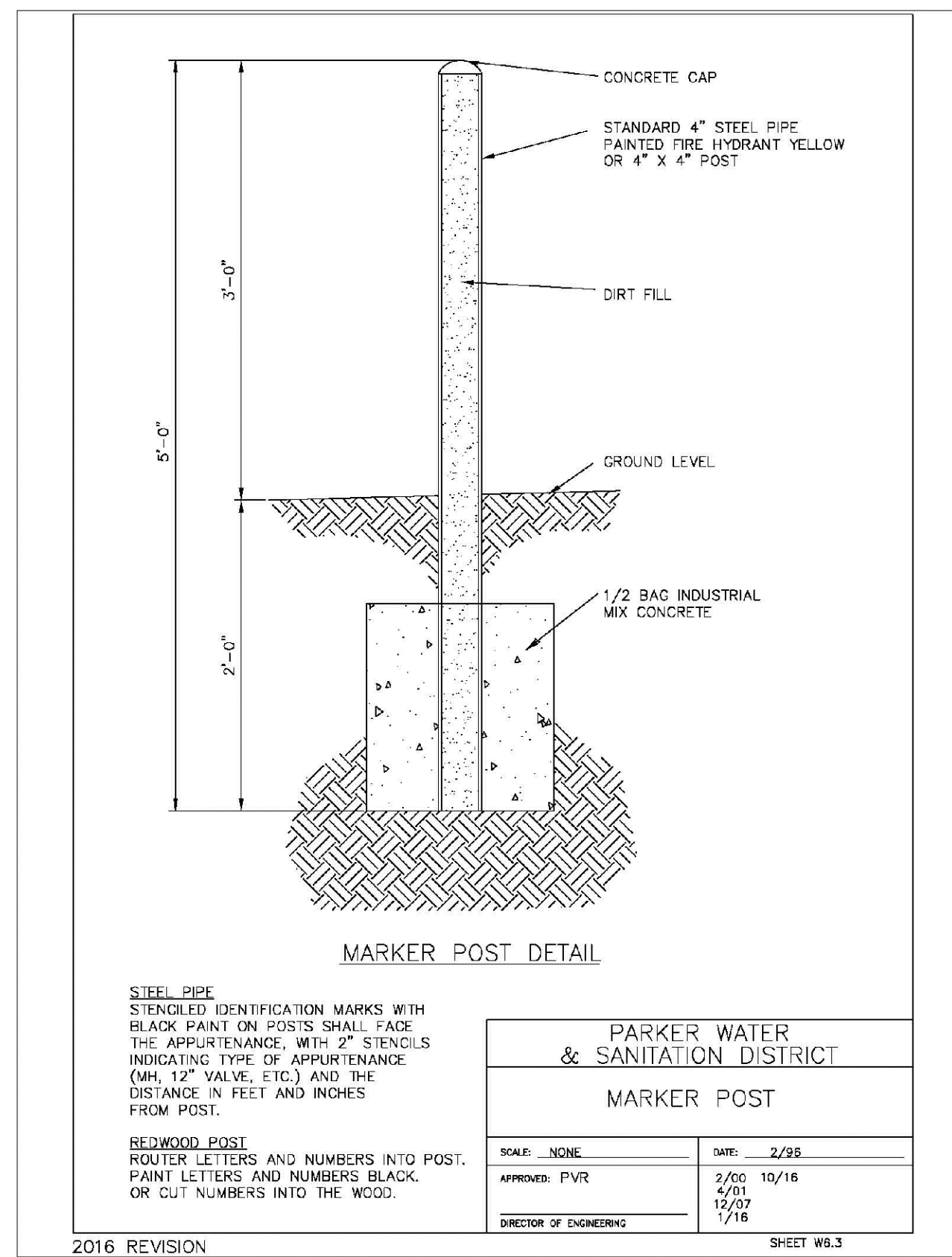
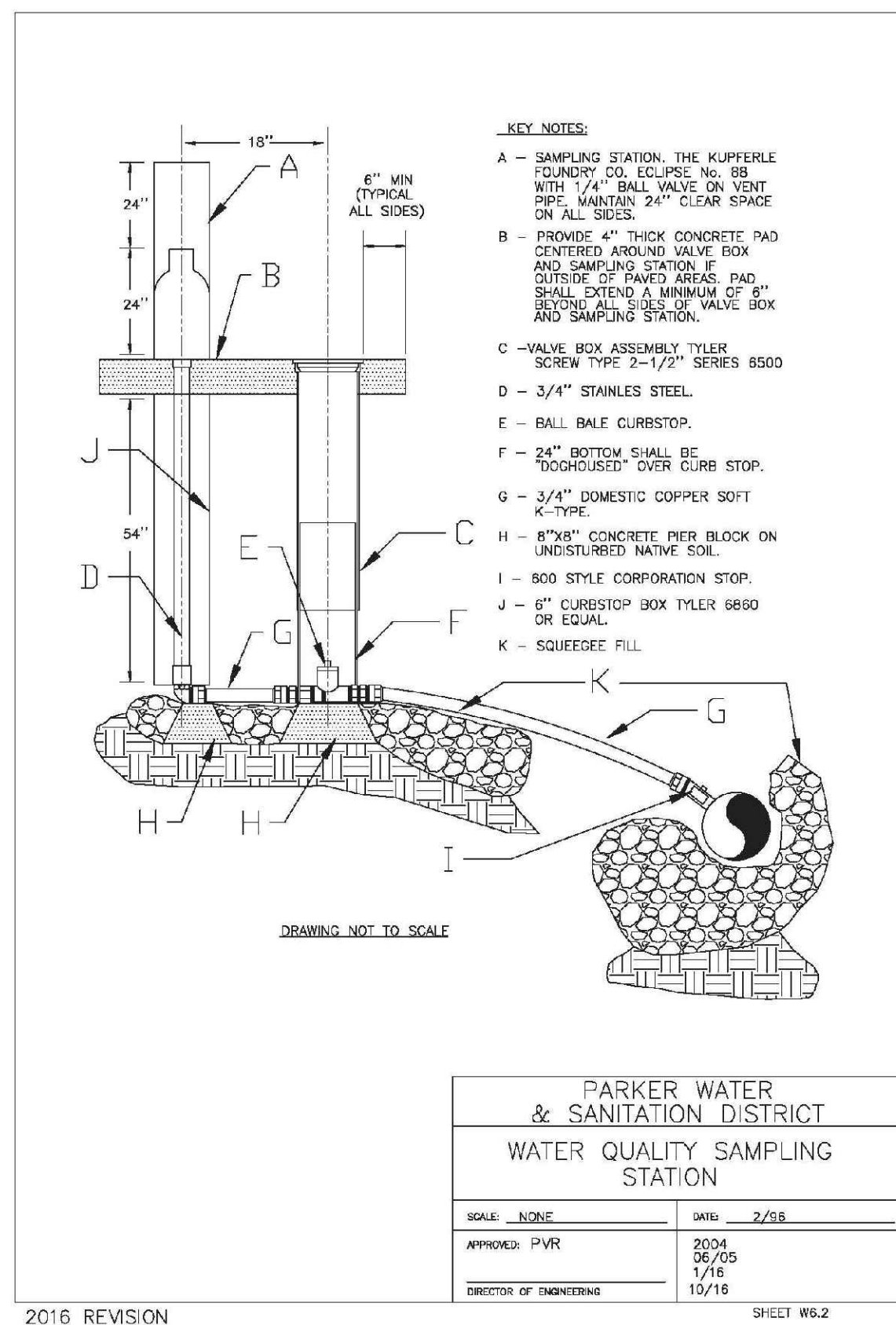
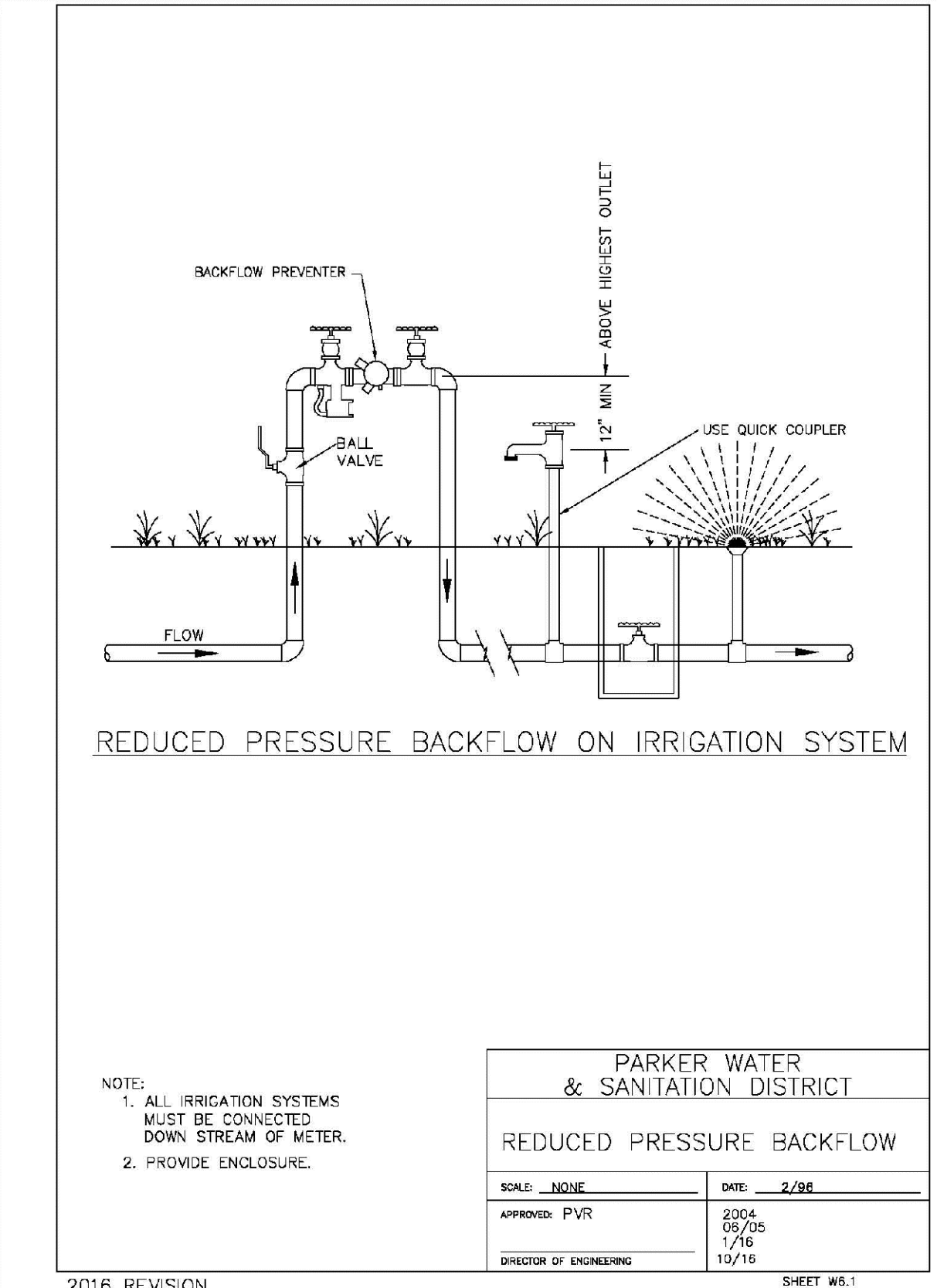
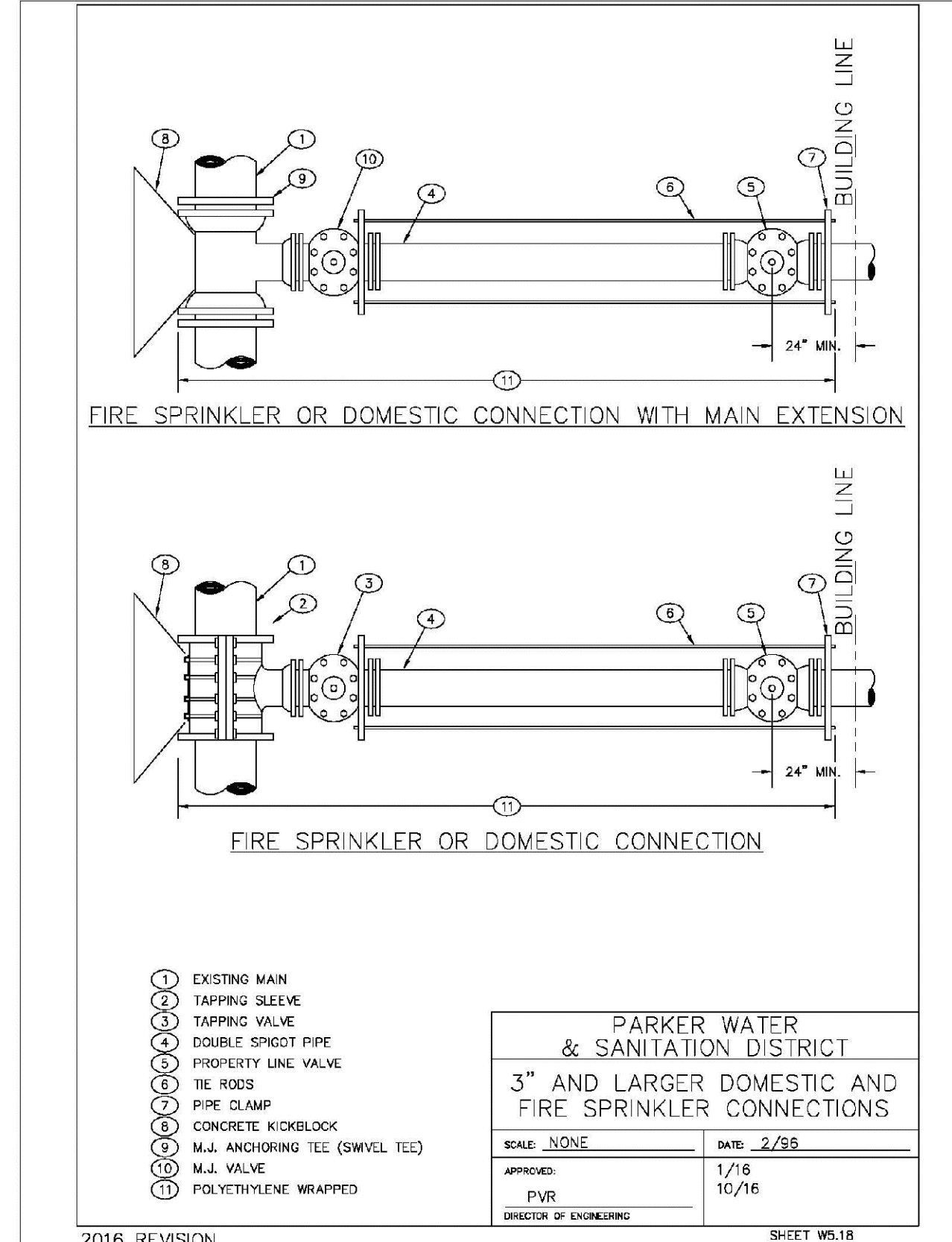
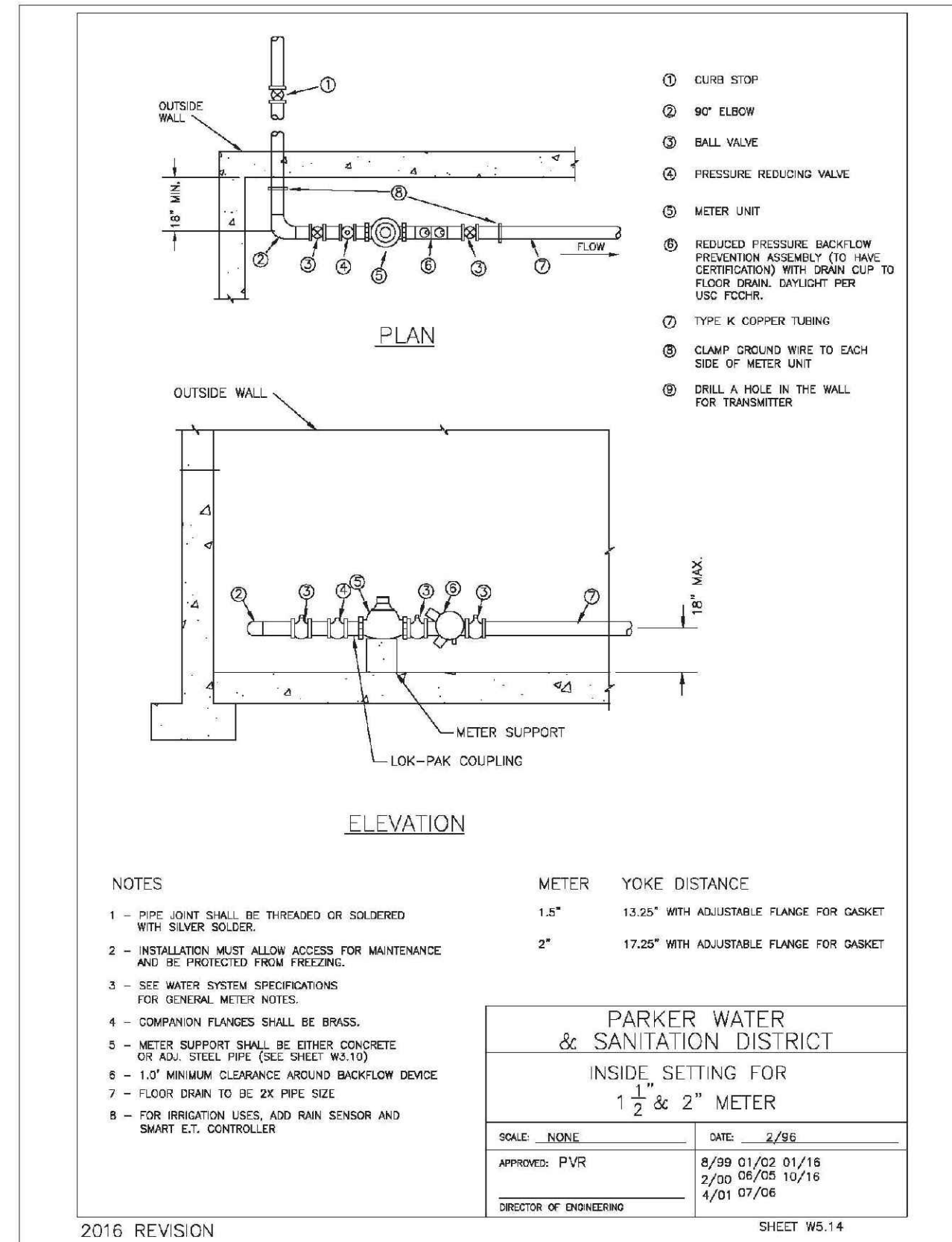
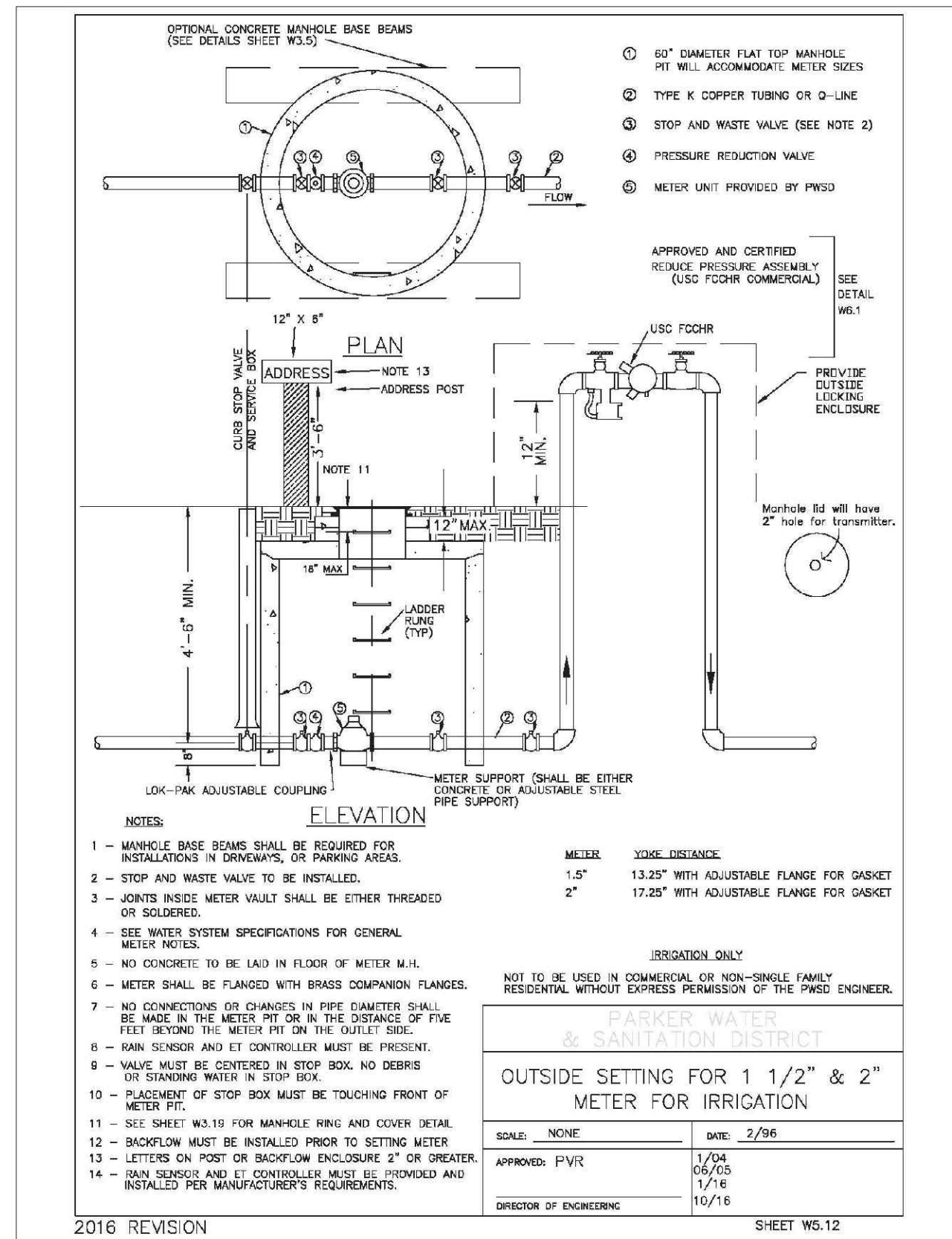
10333 E. Dry Creek Rd
Suite 240
Englewood, CO 80112
Tel: 720.482.952
www.cvlinc.net
westwoodjps.com

CVL
a Westwood team

TRAILS AT CROWFOOT
FILING 12 CONSTRUCTION DRAWINGS
WATER DETAILS

HR 935 LLC
7353 South Alton Way
CENTENNIAL, CO 80112

SHEET NUMBER **16**



N:\PROJECTS\SHSS RANCH\ENGINEERING\SHSS SETS\CD\SET 12\PARKER WATER AND SANITATION\F12 WATER DETAILS.DWG, CDD\VA, 4/20/2021 5:57 PM

CALL 811
TWO WORKING DAYS
BEFORE YOU DIG
UNCC 1-800-922-1987
UTILITY NOTIFICATION
CENTER OF COLORADO

DRAWN BY: JF	SCALE: AS SHOWN	FILE NO: 8130283701	DATE: SEPTEMBER 2017
	CHECKED BY: JJ	DATE: SEPTEMBER 2017	
SHEET NUMBER 17		TRAILS AT CROWFOOT FILING 12 CONSTRUCTION DRAWINGS WATER DETAILS	
HR 935 LLC 7352 South Alton Way CENTENNIAL, CO 80112		10335 E. Dry Creek Rd Suite 240 Englewood, CO 80112 Tel: 720.482.9522 www.cvlinc.net westwoodps.com	
a Westwood team		Revisions	
		Date	Appr.
		Date	Init.
		Date	
		No.	