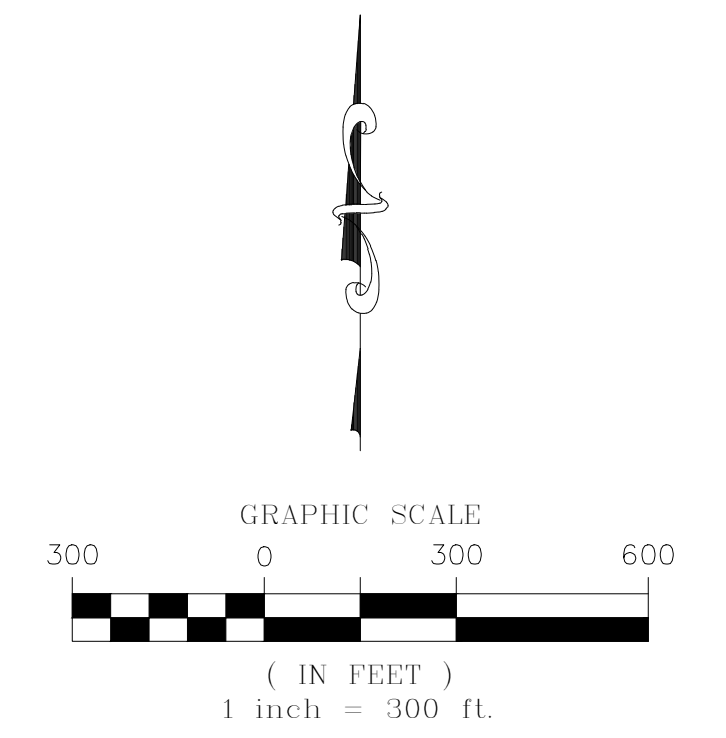
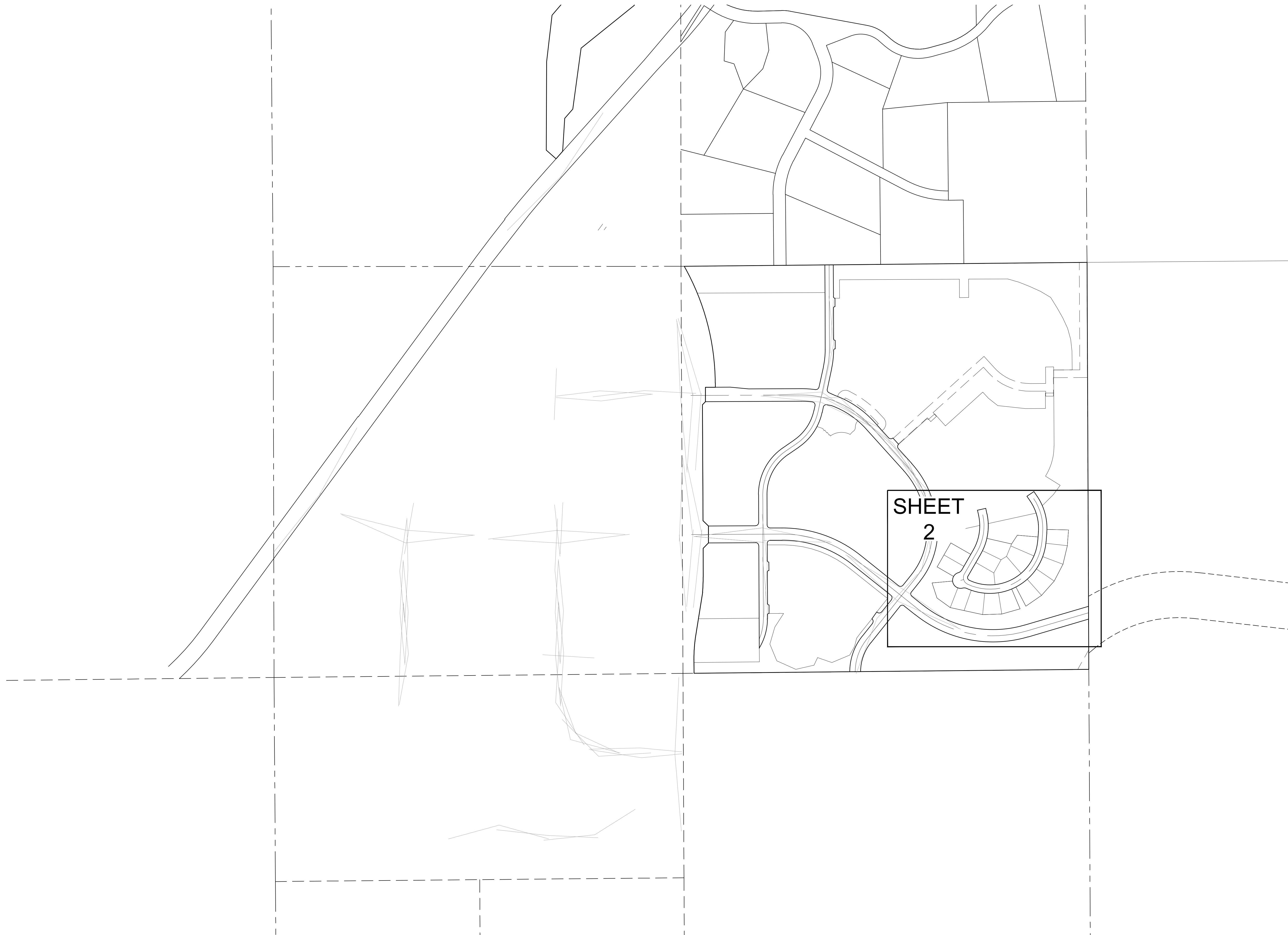


TRAILS AT CROWFOOT SUBDIVISION FILING NO. 12 ADDRESS PLAT

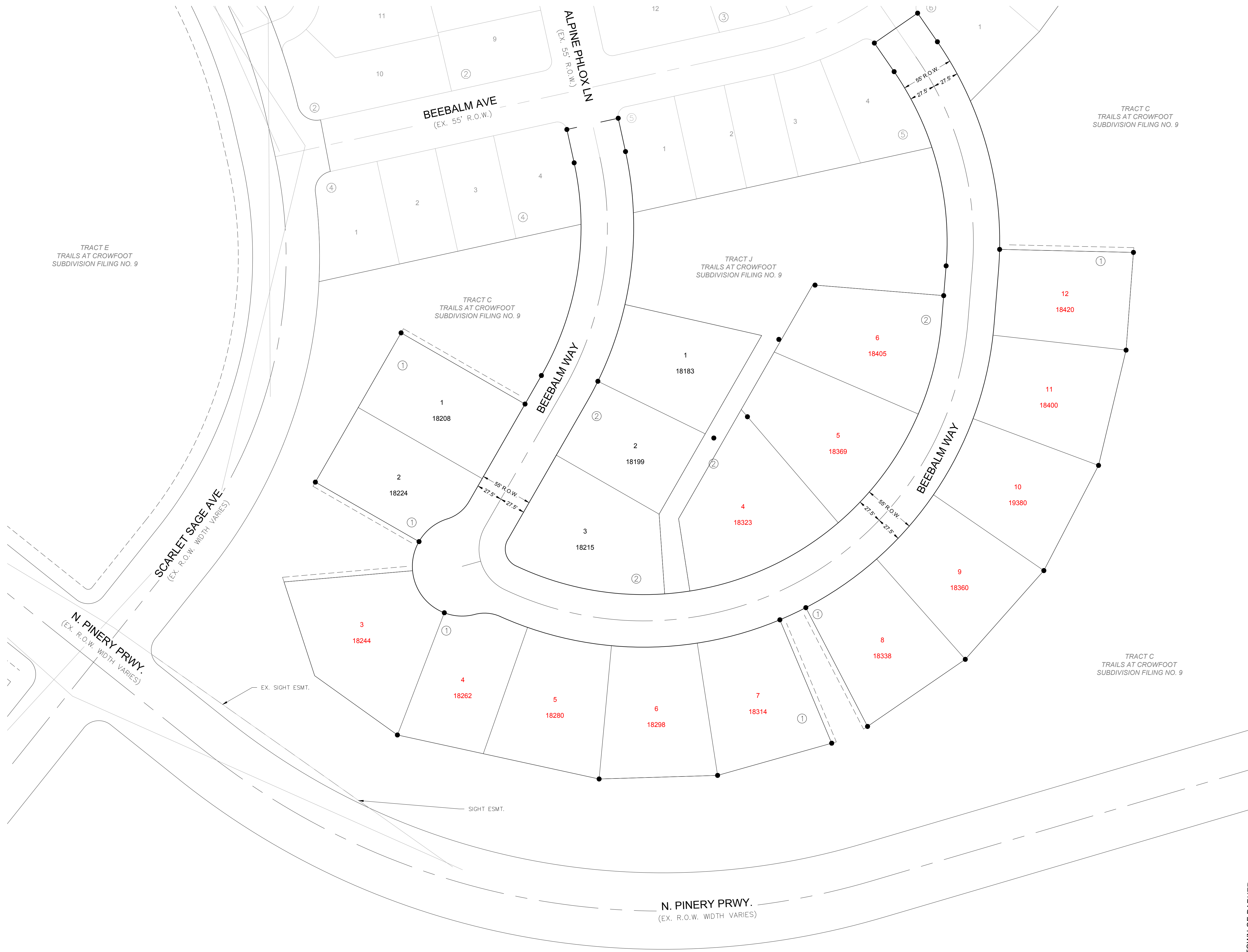
A PART OF THE SECTIONS 4, 8 AND 9, TOWNSHIP 7 SOUTH, RANGE 66 WEST OF THE 6th PRINCIPAL MERIDIAN,
TOWN OF PARKER, COUNTY OF DOUGLAS, STATE OF COLORADO
SHEET 1 OF 2



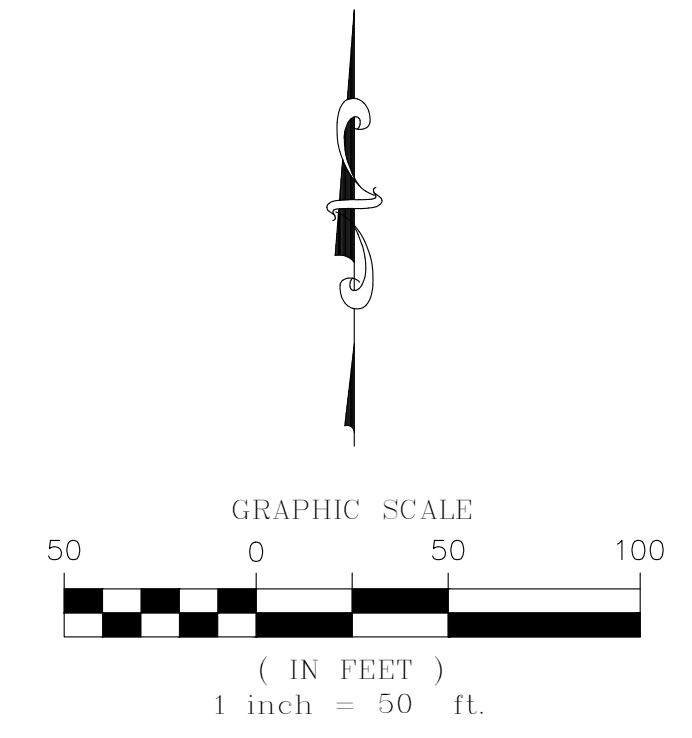
ENGINEER/SURVEYOR
CVL Consultants
of Colorado, Inc.
10333 E. Dry Creek Rd., Suite 240
Englewood, CO 80112
Tel: (720) 482-9526 / Fax: (720) 482-9546

TRAILS AT CROWFOOT SUBDIVISION FILING NO. 12 ADDRESS PLAT

A PART OF THE SECTIONS 4, 8 AND 9, TOWNSHIP 7 SOUTH, RANGE 66 WEST OF THE 6th PRINCIPAL MERIDIAN,
TOWN OF PARKER, COUNTY OF DOUGLAS, STATE OF COLORADO
SHEET 2 OF 2



DOUGLAS COUNTY
ZONED - OPEN SPACE CONSERVATION



LEGEND	
	FND. SECTION CORNER AS DESCRIBED
	R.O.W. RIGHT-OF-WAY
	S.W.U.E. SIDEWALK & UTILITY EASEMENT
	U.E. UTILITY EASEMENT
	EX. U.E. EXISTING UTILITY EASEMENT

TOWN OF PARKER
DOUGLAS COUNTY

ENGINEER/SURVEYOR
CVL Consultants
of Colorado, Inc.
10333 E. Dry Creek Rd., Suite 240
Englewood, CO 80112
Tel: (720) 482-9526 / Fax: (720) 482-9546