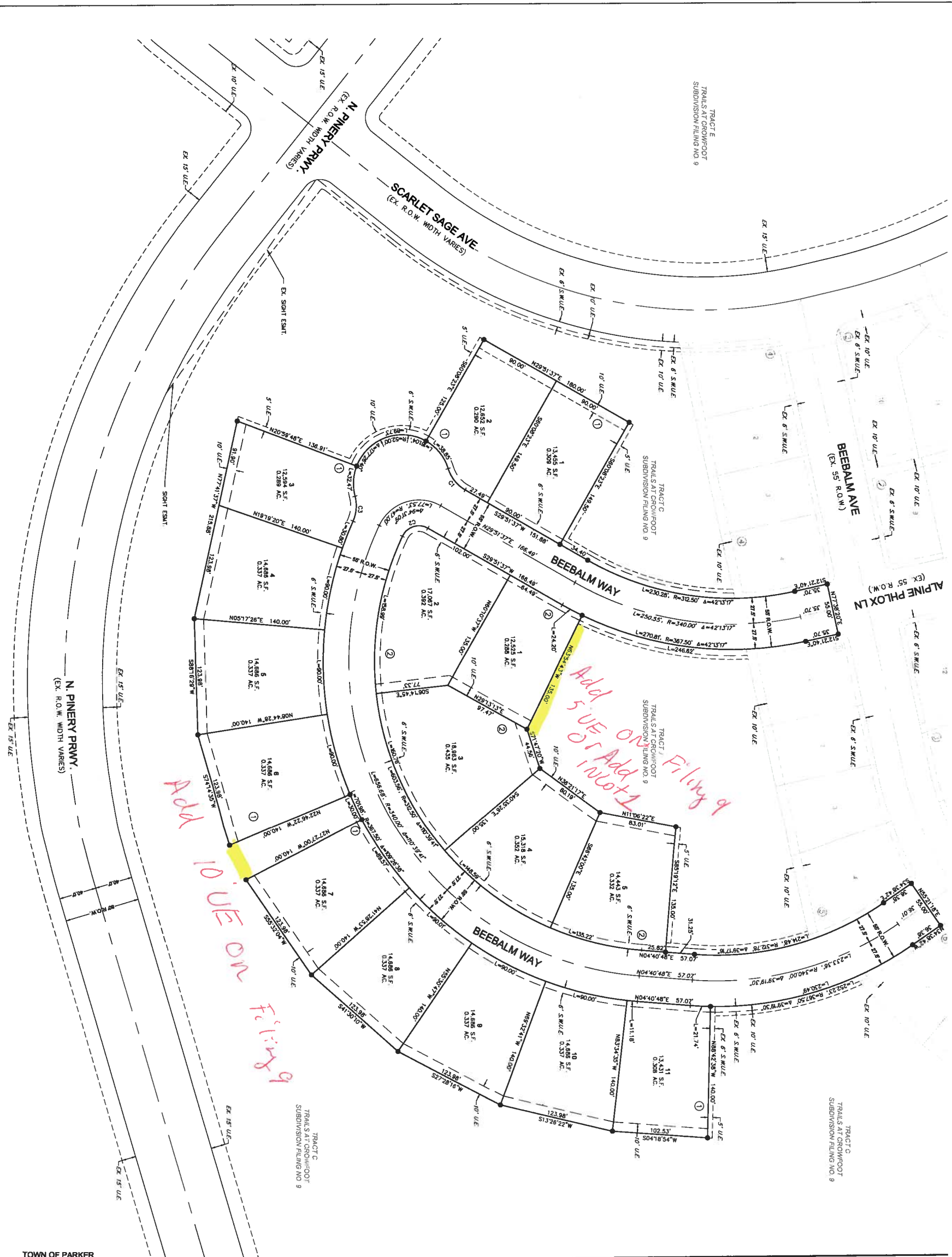
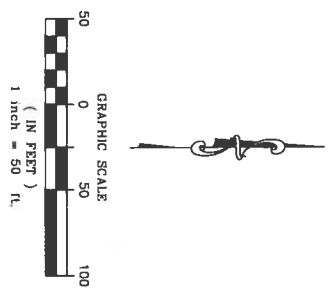


TRAILS AT CROWFOOT SUBDIVISION FILING NO. 12

A PART OF THE SECTIONS 4, 8 AND 9, TOWNSHIP 7 SOUTH, RANGE 66 WEST OF THE 6TH PRINCIPAL MERIDIAN,
TOWN OF PARKER, COUNTY OF DOUGLAS, STATE OF COLORADO
SHEET 3 OF 3



DOUGLAS COUNTY
ZONED - OPEN SPACE CONSERVATION



CURVE NO.	LENGTH	RADIUS	DELTA	CHORD DIRECTION	CHORD LENGTH
C1	29.88'	40.00'	42°48'10"	N51°15'42"E	28.18'
C2	32.17'	19.50'	84°31'08"	S17°23'57"E	28.64'
C3	27.18'	40.00'	35°54'15"	N85°19'42"W	26.84'

LEGEND	
+	FND. SECTION CORNER AS DESCRIBED
—+—	R.O.W. RIGHT-OF-WAY
- - -	S.W.U.E. SIDEWALK & UTILITY EASEMENT
- - -	U.E. UTILITY EASEMENT
- - -	EX U.E. EXISTING UTILITY EASEMENT

TOWN OF PARKER
DOUGLAS COUNTY
N00°15'06"W 20571.22'

ENGINEER/SURVEYOR
Consultants
of Colorado, Inc.
10333 E. Dry Creek Rd., Suite 240
Denver, CO 80231
Tel: (720) 462-8531 / Fax: (720) 462-8548