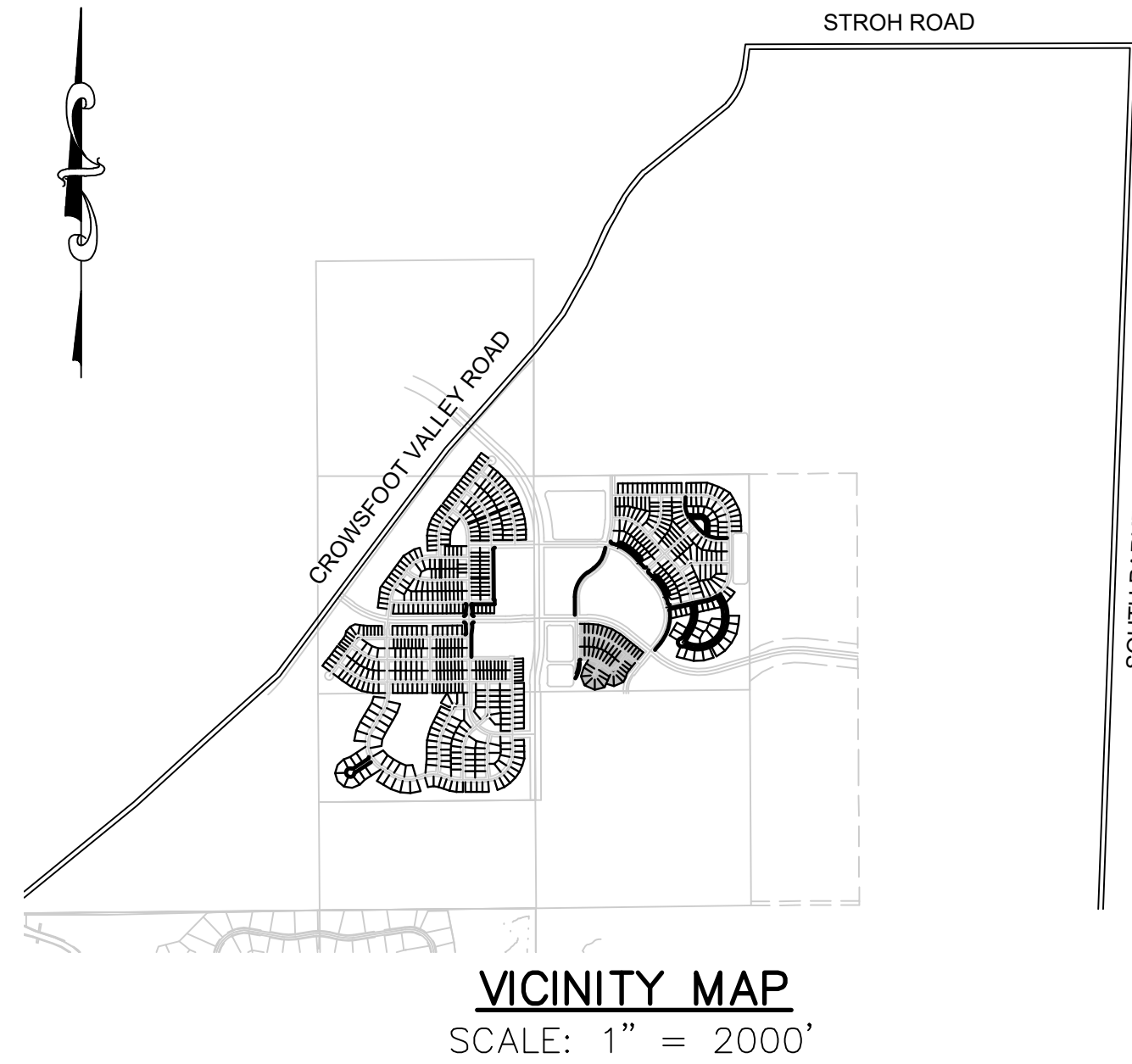


TRAILS AT CROWFOOT FILING 13

PARKER WATER AND SANITATION CONSTRUCTION PLANS

SECTIONS 4, 8, AND 9 TOWNSHIP 7 SOUTH, RANGE 66 WEST OF THE SIXTH PRINCIPAL MERIDIAN COUNTY OF DOUGLAS, STATE OF COLORADO

Sheet List Table	
Sheet Number	Sheet Title
1	COVER SHEET
2	PARKER WATER AND SANITATION NOTES
3	AREA UTILITY PLAN
4	SANITARY P&P SKY PILOT AVENUE
5	SANITARY P&P SKY PILOT LANE
6	SANITARY P&P PURPLE ASTER WAY
7	WATER P&P SKY PILOT AVENUE
8	WATER P&P SKY PILOT LANE
9	WATER P&P PURPLE ASTER WAY
10	SANITARY SEWER DETAILS
11	SANITARY SEWER DETAILS
12	SANITARY SEWER DETAILS
13	WATER DETAILS
14	WATER DETAILS
15	WATER DETAILS
16	WATER DETAILS
17	WATER DETAILS
18	WATER DETAILS
19	WATER DETAILS



MATERIALS LIST		
DESCRIPTION	QUANTITY	UNIT
8" WATERPIPE (C900)	1,719	L.F.
6" WATERPIPE (DIP-FIRE HYDRANT LINE)	28	L.F.
8" GATE VALVE W/ BOX	6	EA.
6" GATE VALVE W/ BOX	2	EA.
FIRE HYDRANT ASSEMBLY	2	EA.
8" BLOWOFF (2" END OF PIPE)	1	EA.
8" BEND	10	EA.
8" TEE	4	EA.
WATER SERVICE LATERAL W/ WATER METER AND PIT	51	EA.
8" SEWER (SDR-35 PVC)	1,701	L.F.
4' DIA. MANHOLE	11	EA.
SEWER SERVICE LATERAL W/ WYE TAP	51	EA.

FIRE DEPARTMENT APPROVAL

ALL FIRE HYDRANTS SHALL BE INSTALLED ACCORDING TO WATER UTILITY STANDARDS. THE NUMBER AND LOCATIONS OF THE FIRE HYDRANTS AS SHOWN ON THE OVERALL UTILITY PLAN ARE CORRECT AS SPECIFIED BY THE TOWN OF PARKER, COMMUNITY DEVELOPMENT DEPARTMENT.

(FIRE CODE OFFICIAL OR DESIGNATED REPRESENTATIVE) _____ DATE _____

(NOTE- UNDERGROUND FIRE LINE (UFL) SUBMITTAL DOCUMENTS MUST MEET THE REQUIREMENTS OF NFPA24 WHEN SUBMITTING FOR REVIEW.)

THE DISTRICT INSPECTOR MUST BE NOTIFIED AT LEAST 48 HOURS PRIOR TO START OF CONSTRUCTION. CALL PARKER WATER AND SANITATION DISTRICT AT 303-841-4627. THE DISTRICT WILL PROVIDE PERIODIC INSPECTIONS OF THE WORK. 24 HOUR NOTICE TO THE INSPECTOR IS REQUIRED FOR SCHEDULING INSPECTIONS. ANY WORK ACCOMPLISHED WITHOUT THE APPROVAL OF THE INSPECTOR WILL BE SUBJECT TO REJECTION.

REVIEWED FOR CONFORMANCE TO PARKER WATER AND SANITATION DISTRICT STANDARDS.

BY: _____
(DISTRICT REPRESENTATIVE)

DATE SIGNED: _____

APPROVED FOR CONSTRUCTION:
PARKER WATER AND SANITATION DISTRICT

BY: _____
(DISTRICT ENGINEER)

DATE SIGNED: _____

PREPARED UNDER THE SUPERVISION OF

BRIAN P. WILSON
COLORADO P.E. 0050067

DEVELOPER

HR 935 LLC
7353 SOUTH ALTON WAY
CENTENNIAL, CO 80112
TEL: (303) 770-9111
CONTACT: MATT JANKE

PLANNER/ LANDSCAPE DESIGNER:

PCS GROUP, INC.
200 KALAMATH STREET
DENVER, CO 80233
TEL: (303) 531-4905
CONTACT: JOHN PRESTWICH

SURVEYOR/ ENGINEER:

**CVL CONSULTANTS
OF COLORADO, INC.**
10333 E. DRY CREEK RD. STE 240
ENGLEWOOD, CO 80112
TEL: (720) 482-9526
CONTACT: JIM JANNICKE

UTILITY DISTRICT

**PARKER WATER AND
SANITATION DISTRICT**
18100 E. WOODMAN DRIVE
PARKER, CO 80134
TEL: (303) 841-4627

BENCHMARK
DOUGLAS COUNTY CONTROL POINT KNOWN AS 1.060032, BEING A 3-1/4" ALUMINUM CAP, BEING LOCATED IN THE SOUTHWEST QUARTER OF SECTION 33, TOWNSHIP 6 SOUTH, RANGE 66 WEST OF THE SIXTH PRINCIPAL MERIDIAN, HAVING A PUBLISHED ELEVATION OF 1799.2670 METERS (5903.13 FEET) NAVD '88 DATUM.

BASIS OF BEARINGS:
THE EAST LINE OF THE NORTHEAST QUARTER OF SAID SECTION 9 BEING MONUMENTED AT THE NORTHEAST CORNER OF SAID SECTION 9 BY A 3-1/4" ALUMINUM CAP STAMPED LS 23053 AND AT THE EAST QUARTER CORNER OF SAID SECTION 9 BY A 2-1/2" ALUMINUM CAP STAMPED LS 6935 BEING CONSIDERED TO BEAR SOUTH 00°15'06" EAST, 2648.70 FEET.

CALL 811
TWO WORKING DAYS
BEFORE YOU DIG
UNCC
UTILITY NOTIFICATION
CENTER OF COLORADO
1-800-922-1987

DRAWN BY: KJD	CHECKED BY: JJ	DATE: SEPTEMBER 2017	SCALE: AS SHOWN	FILE NO: 8130283701	SHEET NUMBER: 1	Revisions	Appr.	Date
							Init.	Date

10333 E. Dry Creek Rd.
Suite 240
Englewood, CO 80112
Tel: (720) 482-9526
Fax: (720) 482-9546

CVL
CONSULTANTS

HR 935 LLC
7353 South Alton Way
CENTENNIAL, CO 80112

TRAILS AT CROWFOOT
FILING 13 CONSTRUCTION DRAWINGS
COVER SHEET

N:\PROJECTS\HSS RANCH\ENGINEERING\SHSHEET SETS\CD\SET 13\PARKER WATER AND SANITATION\F13 COVER.DWG, CDDVA, 1/26/2022 1:13 PM

GENERAL NOTES:

1. ALL CONSTRUCTION SHALL COMPLY WITH PARKER WATER AND SANITATION DISTRICT SPECIFICATIONS.
2. THE CONTRACTOR SHALL CONTACT ALL APPROPRIATE UTILITY COMPANIES AND THE TOWN OF PARKER PRIOR TO THE BEGINNING OF ANY CONSTRUCTION. CONTRACTOR SHALL BE RESPONSIBLE FOR LOCATING ANY EXISTING UTILITY (INCLUDING DEPTHS) WHICH MAY CONFLICT WITH THE PROPOSED CONSTRUCTION. ALL EXISTING UTILITIES SHALL BE PROTECTED FROM DAMAGE BY THE CONTRACTOR. DAMAGED UTILITIES SHALL BE REPAIRED BY THE CONTRACTOR AT HIS OWN EXPENSE.
3. ALL ITEMS SHOWN ON THE PLANS AS EXISTING ARE SHOWN IN APPROXIMATE LOCATIONS ONLY. THE ACTUAL LOCATIONS MAY VARY FROM THE PLANS, ESPECIALLY IN THE CASE OF UNDERGROUND UTILITIES. WHENEVER CONTRACTOR DISCOVERS A DISCREPANCY IN LOCATIONS, HE SHALL CONTACT THE ENGINEER IMMEDIATELY.
4. THE DISTRICT ENGINEER AND OTHER APPROVING AGENCIES ARE TO BE NOTIFIED AT LEAST 48 HOURS PRIOR TO CONSTRUCTION.
5. THE CONTRACTOR SHALL OBTAIN, AT HIS EXPENSE, ALL PERMITS THAT ARE NECESSARY TO PERFORM THE PROPOSED WORK.
6. ALL CONCRETE SHALL BE A MINIMUM OF CLASS A, 6 SACK, TYPE II, 3000-POUND COMPRESSION STRENGTH.
7. THE DESIGN ENGINEER SHALL SUBMIT ONE (1) SET OF ROLLED "AS-BUILT" BLUELINE PRINTS AND ELECTRONIC FILES TO THE DISTRICT ENGINEER FOR APPROVAL PRIOR TO PRINTING MYLAR SEPIAS FOR THE DISTRICT. AFTER APPROVAL HAS BEEN GRANTED BY THE DISTRICT ENGINEER, FULL SIZE MYLAR SEPIA PRINTS SHALL BE TRANSMITTED TO THE PARKER WATER AND SANITATION DISTRICT OFFICE.
8. ALL BACKFILL MATERIAL SHALL BE COMPACTED TO 95% STANDARD PROCTOR DENSITY. COMPACTION TESTS MUST BE SUBMITTED TO DISTRICT ENGINEER PRIOR TO PROBATIONARY ACCEPTANCE.
9. TRENCHES SHALL BE EXCAVATED AND THE PIPE EXPOSED FOR THE INSPECTION AT ANY LOCATION ON THE PROJECT IF SO ORDERED BY THE INSPECTOR.
10. THE CONTRACTOR WILL BE HELD RESPONSIBLE FOR THE PROPER FUNCTIONING OF LINES (WATER AND SEWER) FOR UP TO TWO (2) YEARS FROM THE DATE OF PROBATIONARY ACCEPTANCE OF THE LINES BY THE DISTRICT. ANY MALFUNCTION DURING THIS PERIOD OF GUARANTEE SHALL BE REMEDIED BY THE CONTRACTOR TO THE SATISFACTION OF THE DISTRICT ENGINEER AT NO EXPENSE TO THE DISTRICT.
11. SURFACE GRADES ARE TO BE WITHIN PLUS OR MINUS ONE FOOT OF FINISHED GRADE AND VERIFICATION OF COMPACTION RESULTS OBTAINED PRIOR TO THE INSTALLATION OF WATER AND SEWER LINES. RESULTS MUST BE SUBMITTED TO THE DISTRICT ENGINEER.
12. NO WORK SHALL BE BACKFILLED UNTIL THE CONSTRUCTION HAS BEEN INSPECTED AND APPROVED FOR BACKFILLING BY THE DISTRICT ENGINEER OR REPRESENTATIVE OF THE DISTRICT ENGINEER.
13. ALL SERVICES WILL BE PERMANENTLY MARKED ON CURB FACE AS FOLLOWS: "X" FOR SANITARY SERVICE SEWERS "V" FOR WATER SERVICES
14. NO TREES SHALL BE ALLOWED IN EASEMENTS OR WITHIN 8' OF ANY WATER OR SANITARY SEWER MAINS IN RIGHT OF WAY.
15. THE CONTRACTOR SHALL HAVE IN HIS POSSESSION AT ALL TIMES ONE (1) SIGNED COPY OF THE PLANS WHICH HAVE BEEN APPROVED BY THE PARKER WATER AND SANITATION DISTRICT AND THE DISTRICT ENGINEER AND ONE (1) COPY OF THE LATEST PARKER WATER AND SANITATION DISTRICT SPECIFICATION MANUAL.

WATER MAIN NOTES:

1. ALL MATERIALS AND WORKMANSHIP SHALL BE IN CONFORMANCE WITH THE PARKER WATER AND SANITATION DISTRICT ENGINEERING STANDARDS AND SPECIFICATIONS, LATEST REVISIONS. ALL WORK SHALL BE INSPECTED AND APPROVED BY PERSONNEL OF THE PARKER WATER SANITATION DISTRICT AND THE DISTRICT ENGINEER.
2. ALL WATER MAINS SHALL BE PER PWS MATERIALS SPECIFICATIONS.
3. ALL BENDS, PLUGS, REDUCERS, AND FIRE HYDRANTS TO BE RODDED OR MEGA-LUGGED. ALL FITTINGS SHALL BE WRAPPED WITH 8-MIL MINIMUM THICKNESS POLYETHYLENE MATERIAL PER PWS MATERIALS SPECIFICATIONS.
4. THERE SHALL BE A MINIMUM COVER OF 4.5 FEET OVER ALL WATER MAINS.
5. FIRE HYDRANTS SHALL CONFORM TO AWWA C-502 "DRY BARREL FIRE HYDRANTS" PIPE HYDRANT ASSEMBLIES SHALL INCLUDE ALL PIPE, FITTINGS, VALVES, MATERIALS, AND LABOR WHICH ARE NECESSARY TO INSTALL THE HYDRANT COMPLETE IN PLACE. SEE MATERIALS SPECIFICATIONS FOR APPROVED MODELS.
6. ALL BENDS, TEES, FIRE HYDRANTS, BLOW-OFFS AND PLUGS AT DEAD END MAINS SHALL BE PROTECTED FROM THRU-FAST BY USING CONCRETE THRUST BLOCKS.
7. PRECAUTIONS SHALL BE TAKEN TO PROTECT THE INTERIOR OF PIPES, FITTINGS, AND VALVES AGAINST CONTAMINATION. ALL OPENINGS IN THE PIPELINE SHALL BE CLOSED WITH WATERTIGHT PLUGS WHEN PIPE LAYING IS STOPPED AT THE CLOSE OF THE DAY'S WORK OR FOR OTHER REASONS, SUCH AS REST BREAKS OR MEAL PERIODS. THE MORE CLOSELY THE RATE OF DELIVERY IS CORRELATED TO THE RATE OF PIPE LAYING, THE LOWER THE RISK OF CONTAMINATION.
8. CHLORINATION AND FLUSHING: ALL WATER MAINS SHALL BE INSTALLED AND CHLORINATED PER PARKER WATER AND SANITATION STANDARDS AND SPECIFICATIONS. THE LINES SHALL BE CHLORINATED IN ACCORDANCE WITH ANSI/AWWA C-651-92., "DISINFECTING WATER MAINS." PARKER WATER AND SANITATION DISTRICT REQUIRES THE INITIAL DOSAGE RATE OF DISINFECTION BE AT LEAST 50 MG PER LITER. CHLORINE TABLETS SHOULD BE ADHERED TO THE TOP OF THE PIPE SECTION WITH PERMATEX NO.1 (RED). THE CHLORINATION OF ANY FINISHED PIPELINE SHALL BE DONE PRIOR TO THE HYDROSTATIC TESTING.
9. HYDROSTATIC TESTING: ALL WATER MAINS SHALL BE TESTED PER THE REQUIREMENTS OF THE PARKER WATER AND SANITATION DISTRICT STANDARDS AND SPECIFICATIONS. ALL PIPE SHALL BE FIELD PRESSURE TESTED TO A MINIMUM OF 150 PSI. ALL TESTING SHALL BE DONE IN THE PRESENCE OF A PARKER WATER AND SANITATION DISTRICT INSPECTOR. LEAKAGE FOR EACH SECTION OF PIPE BETWEEN LINES VALVES SHALL NOT EXCEED THE LIMITS SET FORTH IN THE PARKER WATER AND SANITATION DISTRICT STANDARDS AND SPECIFICATIONS.
10. VALVES IN STREETS ARE TO BE LOCATED AT PROPERTY LINE EXTENSIONS EXCEPT FOR TAPPING TEES WHERE AN ADDITIONAL VALVES SHALL BE PLACED ON THE TAPPING TEE. OTHER VALVE LOCATIONS, SUCH AS WHERE CROSS PANS EXIST, ARE SHOWN ON THE PLANS.
11. WHEN NECESSARY TO LOWER OR RAISE WATER LINES AT STORM DRAINS AND OTHER UTILITY CROSSING, A MINIMUM CLEARANCE OF 1.50 FEET SHALL BE MAINTAINED BETWEEN OUTSIDE OF PIPES.
12. THE CONTRACTOR SHALL NOTIFY THE PARKER WATER AND SANITATION DISTRICT AND THE DISTRICT ENGINEER AT LEAST 48 HOURS PRIOR TO ANY CONSTRUCTION. IF WORK IS SUSPENDED FOR ANY PERIOD OF TIME AFTER INITIAL START-UP, THE CONTRACTOR MUST NOTIFY THE DISTRICT ENGINEER 48 HOURS PRIOR TO RE-START.
13. PIPE BEDDING SHALL BE A CLEAN, WELL-GRADED SAND OR SQUEEGEE SAND IN ACCORDANCE WITH PARKER WATER AND SANITATION DISTRICT STANDARDS AND SPECIFICATIONS, LATEST REVISION.
14. THE CONTRACTOR SHALL NOTIFY THE PUBLIC UTILITY COMPANIES AND DETERMINE THE LOCATION OF ALL EXISTING UNDERGROUND UTILITIES PRIOR TO PROCEEDING WITH THE EXCAVATION. ALL WORK PERFORMED IN THE AREA OF THE PUBLIC UTILITIES SHALL BE PERFORMED ACCORDING TO THE REQUIREMENTS OF THESE AGENCIES.
15. COMPACTION OF ALL TRENCHES MUST BE ATTAINED IN ACCORDANCE WITH THE SOILS REPORTS AND COMPACTION TEST RESULTS SUBMITTED TO THE DISTRICT ENGINEER PRIOR TO PROBATIONARY ACCEPTANCE.
16. VALVE BOXES: TYLER SCREW-TYPE 6 INCHES CAST IRON VALVE BOX ASSEMBLY SERIES 6860 WITH NO. 160 OVAL BASE. CLAY AND BAILEY SCREW-TYPE 6 INCH CAST IRON VALVE BOX ASSEMBLY NO. P-108 WITH NO. 106 LARGE OVAL BASE.
17. ALL PIPE LENGTHS ARE APPROXIMATE.
18. AT LEAST FIVE (5) DAYS PRIOR TO THE START OF CONSTRUCTION, A PRE-CONSTRUCTION MEETING WILL BE HELD AT THE OFFICE OF THE DISTRICT ENGINEER AND ATTENDED BY THE CONTRACTOR AND REPRESENTATIVE OF OTHER APPROVING AGENCIES. IT WILL BE THE RESPONSIBILITY OF THE CONTRACTOR TO CONTACT THE DISTRICT ENGINEER.

SANITARY SEWER NOTES:

1. ALL SANITARY SEWER CONSTRUCTION SHALL CONFORM TO THE PARKER WATER AND SANITATION DISTRICT SPECIFICATION.
2. ALL SEWER MAINS SHALL BE PVC, ASTM D-3034, SDR 35 OR APPROVED EQUAL. ALL SEWER MAIN SIZE IS 8" IN DIAMETER UNLESS OTHERWISE NOTED.
3. SEWER LINES SHALL BE INSTALLED 5.0 FEET SOUTH OR WEST OF STREET CENTERLINE, UNLESS OTHERWISE SHOWN ON PLANS. SEWER LINES SHALL BE 10.00 FEET FROM WATER LINES EXCEPT WHEN CROSSING EACH OTHER. SEWER LINES WHICH CROSS LESS THAN 1.50 FEET VERTICALLY FROM THE WATER MAIN SHALL BE ENCASED IN CONCRETE AS PER PARKER WATER AND SANITATION DISTRICT STANDARD AND SPECIFICATIONS. USE RUBBER GASKETS FOR PVC ENCASEMENT.
4. SEWER RIM ELEVATIONS SHOWN ARE APPROPRIATE ONLY AND ARE NOT TO BE TAKEN AS FINAL ELEVATIONS. RING AND COVER SHALL BE SET IN CENTERED CONCRETE RINGS WITH RAM-NECK FOR ADJUSTMENT TO MATCH FINAL PAVEMENT ELEVATIONS.
5. THE CONTRACTOR AND SURVEY CREW SHALL VERIFY ELEVATIONS OF EXISTING SEWER LINES AND MANHOLES TO BE TIED TO PRIOR TO CONSTRUCTION OR STAKING OF SANITARY SEWER.
6. NO UNDERDRAIN SYSTEM WILL BE ALLOWED TO BE PLACED IN MAINLINE OR SEWER SERVICE TRENCHES.
7. SEWER SERVICE TEES FOR EACH UNIT SHALL BE STAKED BY A SURVEY CREW AND FURNISHED AND INSTALLED BY THE CONTRACTOR. THE CONTRACTOR SHALL FURNISH TO THE ENGINEER "AS CONSTRUCTED" LOCATION OF TEES. SEWER WYES SHALL BE USED RATHER THAN TEES.
8. ALL MANHOLES SHALL BE 48-INCHES IN DIAMETER WITH 24-INCH RING AND COVER, ECCENTRIC CONE UNLESS OTHERWISE SPECIFIED.
9. PIPE BEDDING SHALL BE CLASS "B" AND SHALL CONFORM TO ASTM C-33 OR D-448 GRADATION NO. 6 OR NO. 67.
10. AT LEAST FIVE (5) DAYS PRIOR TO THE START OF CONSTRUCTION, A PRE-CONSTRUCTION MEETING WILL BE HELD AT THE OFFICE OF THE DISTRICT ENGINEER AND ATTENDED BY THE CONTRACTOR AND REPRESENTATIVES OF THE OTHER APPROVING AGENCIES. IT WILL BE THE RESPONSIBILITY OF THE CONTRACTOR TO CONTACT THE DISTRICT ENGINEER TO SCHEDULE THIS MEETING.
11. ALL PIPE LENGTHS ARE APPROXIMATE.
12. THE CONTRACTOR SHALL HAVE IN HIS POSSESSION AT ALL TIMES ONE (1) SIGNED COPY OF THE PLANS WHICH HAVE BEEN APPROVED BY THE PARKER WATER AND SANITATION DISTRICT AND THE DISTRICT ENGINEER AND ONE (1) COPY OF THE LATEST PARKER WATER AND SANITATION DISTRICT SPECIFICATION MANUAL.
13. ALL MANHOLES SHALL HAVE SHAPED INVERTS.
14. ALL SEWER LINES SHALL BE TESTED IN ACCORDANCE WITH THE PARKER WATER AND SANITATION DISTRICT STANDARDS AND SPECIFICATIONS PRIOR TO ACCEPTANCE OR ANY CONNECTION TO AN EXISTING SEWER LINE.
15. PRIOR TO START WORK WHERE SEWER MAIN TO BE INSTALLED INTO EXISTING DISTRICT SEWER SYSTEMS. THE NEAREST MANHOLE TO THE POINT OF TIE-IN SHALL BE PLUGGED WITH A PLUMBER'S PLUG ON THE INLET SIDE BY THE CONTRACTOR. THIS PLUG SHALL REMAIN IN PLACE UNTIL FINAL ACCEPTANCE BY THE DISTRICT. ITS PURPOSE SHALL BE TO PREVENT ANY MUD, WATER OR OTHER MATERIALS FROM ENTERING THE LINE DURING CONSTRUCTION. THE CONTRACTOR SHALL BE RESPONSIBLE FOR PUMPING AND CLEANING THESE MANHOLES AND REMOVING THE PLUG WHEN SO INSTRUCTED BY THE DISTRICT.
16. PRIOR TO PROBATIONARY ACCEPTANCE WALK-THROUGH, THE CLIENT SHALL JET CLEAN THE ENTIRE SANITARY SEWER SYSTEM AND PUMP OUT AT THE PLUGGED MANHOLE.

DISTRICT ACCEPTANCE NOTES:

1. UPON COMPLETION OF SANITARY SEWER AND WATER CONSTRUCTION AND TESTING, THE DEVELOPER OR CONTRACTOR SHALL CONTACT THE DISTRICT FOR PROBATIONARY ACCEPTANCE INSPECTION. A PUNCHLIST WILL BE PROVIDED THE DEVELOPER AND CONTRACTOR UPON COMPLETION OF THE INITIAL WALK-THRU AND PROBATIONARY ACCEPTANCE WILL BE ISSUED FOLLOWING COMPLETION AND ACCEPTANCE OF THE WORK OUTLINED IN THE PUNCHLIST.
2. THE CONTRACTOR WILL BE HELD RESPONSIBLE FOR THE PROPER FUNCTIONING OF THE LINES FOR UP TO TWO (2) YEARS FROM THE DATE OF PROBATIONARY ACCEPTANCE OF THE LINES BY THE DISTRICT. ANY MALFUNCTION DURING THIS PERIOD OF GUARANTEE SHALL BE REMEDIED BY THE CONTRACTOR TO THE SATISFACTION OF THE DISTRICT ENGINEER AT NO EXPENSE TO THE DISTRICT.
3. THE DATE OF FINAL ACCEPTANCE WILL BE INDICATED IN THE CONDITIONS OF THE PROBATIONARY ACCEPTANCE LETTER. THE DEVELOPER SHALL BE RESPONSIBLE FOR CONTACTING THE DISTRICT FOR FINAL INSPECTION AND FINAL ACCEPTANCE.

N:\PROJECTS\HSHSS RANCH\CHAD\ENGINEERING\SSHEET SETS\CD\SS\13\PARKER WATER AND SANITATION\DWG\F11 COVER.DWG, CDDVA, 1/26/2022 1:13 PM

CALL 811
TWO WORKING DAYS
BEFORE YOU DIG
1-800-922-1987



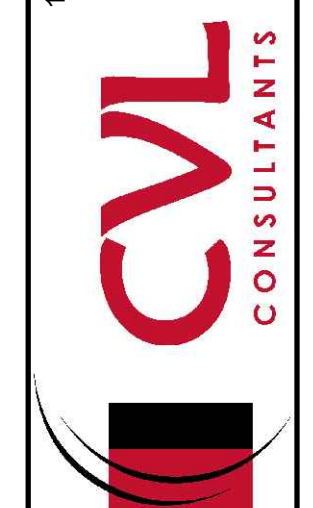
UNCC
UTILITY NOTIFICATION
CENTER OF COLORADO

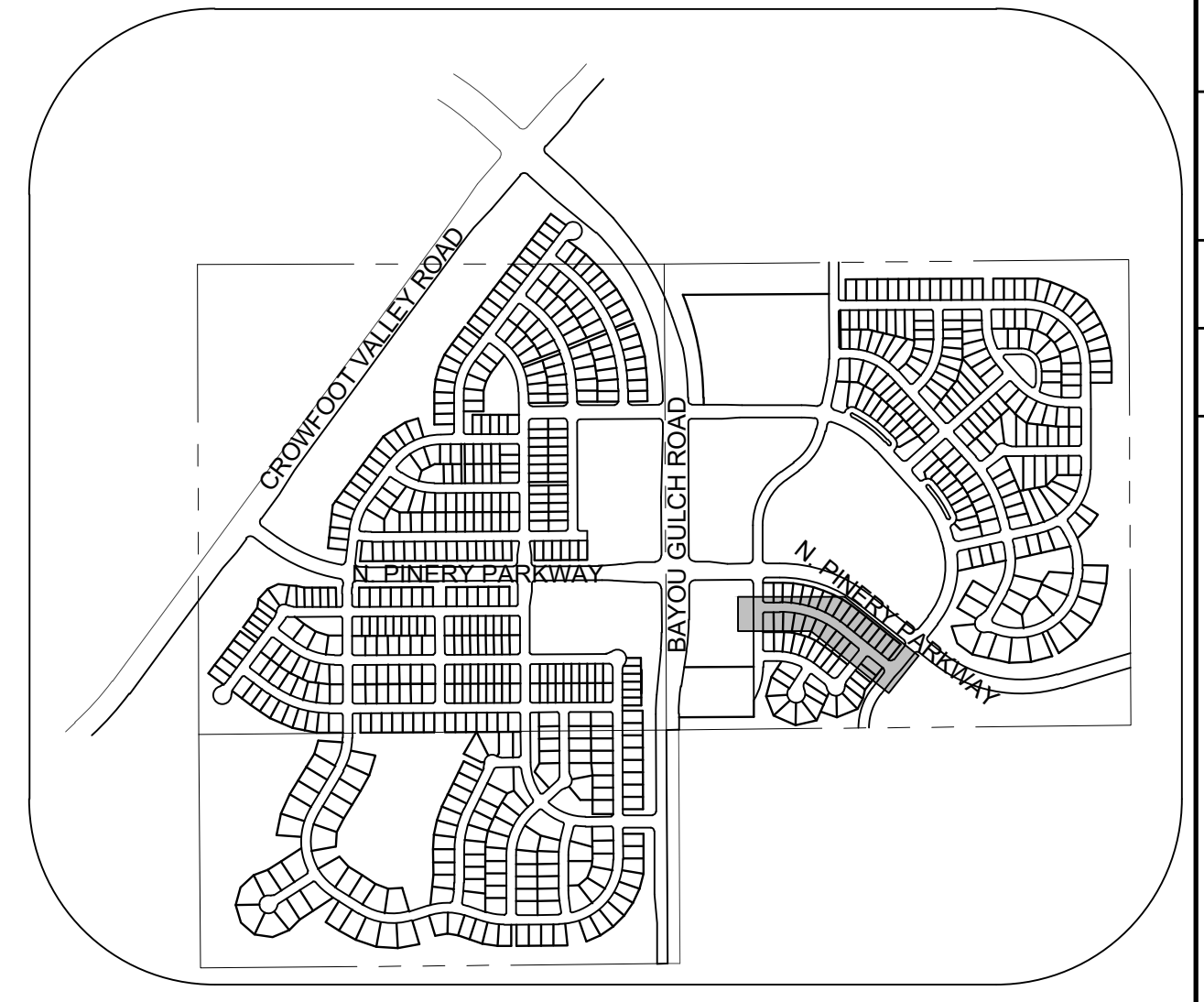
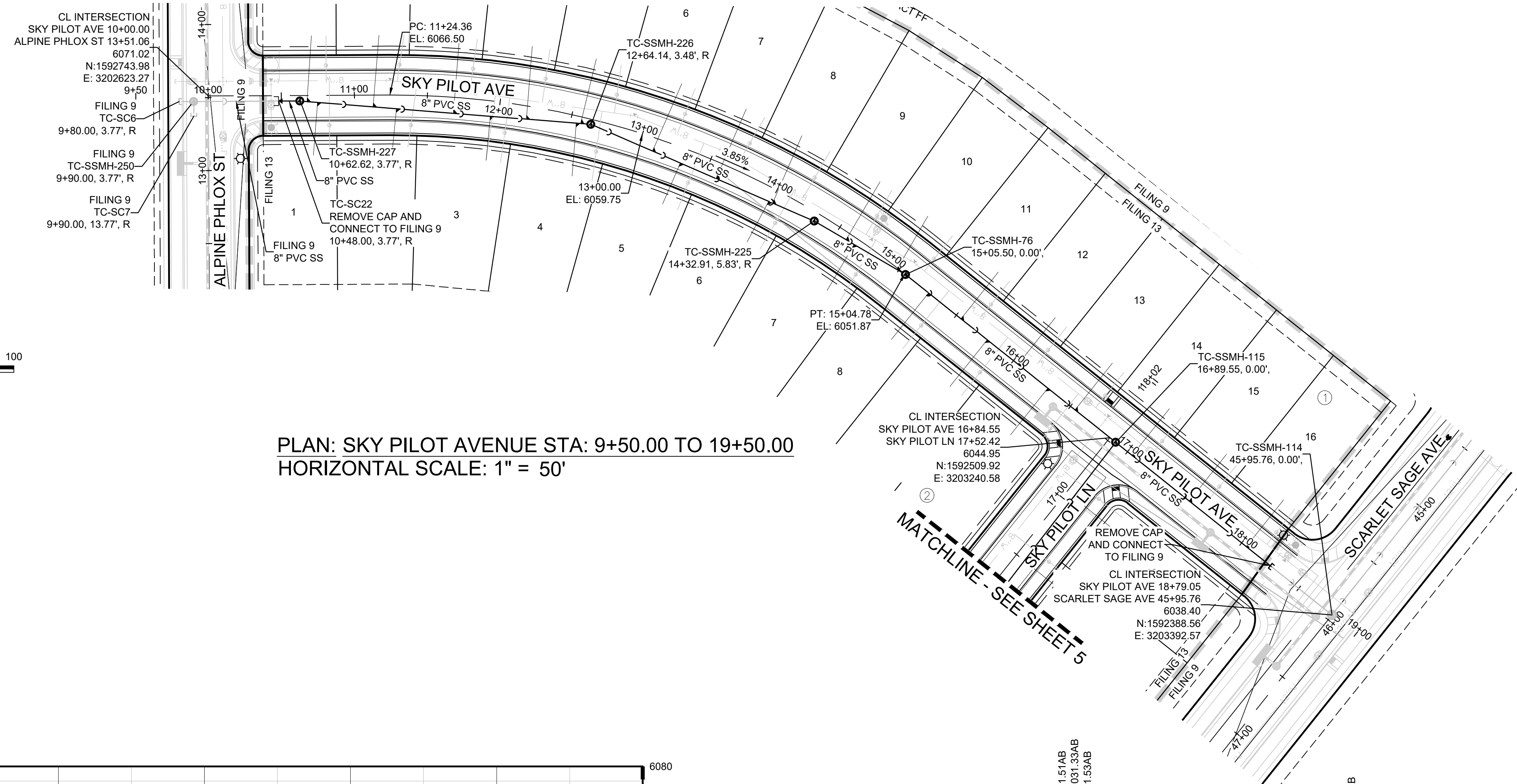
BENCHMARK
DOUGLAS COUNTY CONTROL POINT KNOWN AS 1.060032, BEING A 3-1/4" ALUMINUM CAP, BEING LOCATED IN THE SOUTHWEST QUARTER OF SECTION 33, TOWNSHIP 6 SOUTH, RANGE 66 WEST OF THE SIXTH PRINCIPAL MERIDIAN, HAVING A PUBLISHED ELEVATION OF 1799.2670 METERS (5903.13 FEET) NAVD '88 DATUM.

BASIS OF BEARINGS:
THE EAST LINE OF THE NORTHEAST QUARTER OF SAID SECTION 9 BEING MONUMENTED AT THE NORTHEAST CORNER OF SAID SECTION 9 BY A 3-1/4" ALUMINUM CAP STAMPED LS 23053 AND AT THE EAST QUARTER CORNER OF SAID SECTION 9 BY A 2-1/2" ALUMINUM CAP STAMPED LS 6935 BEING CONSIDERED TO BEAR SOUTH 00°15'06" EAST, 2648.70 FEET.

PREPARED UNDER THE SUPERVISION OF

BRIAN P. WILSON
COLORADO P.E. 0050067

DRAWN BY: KJD	CHECKED BY: JJU	DATE: SEPTEMBER 2017	SCALE: AS SHOWN	FILE NO: 8130283701	SHEET NUMBER 2
			TRAILS AT CROWFOOT FILING 13 CONSTRUCTION DRAWINGS PARKER WATER AND SANITATION NOTES		
10335 E. Dry Creek Rd. Englewood, CO 80112 Tel: (720) 482-9526 Fax: (720) 482-9546					Revisions No.
					
HR 935 LLC 7353 South Alton Way CENTENNIAL, CO 80112					Date Appr. Date

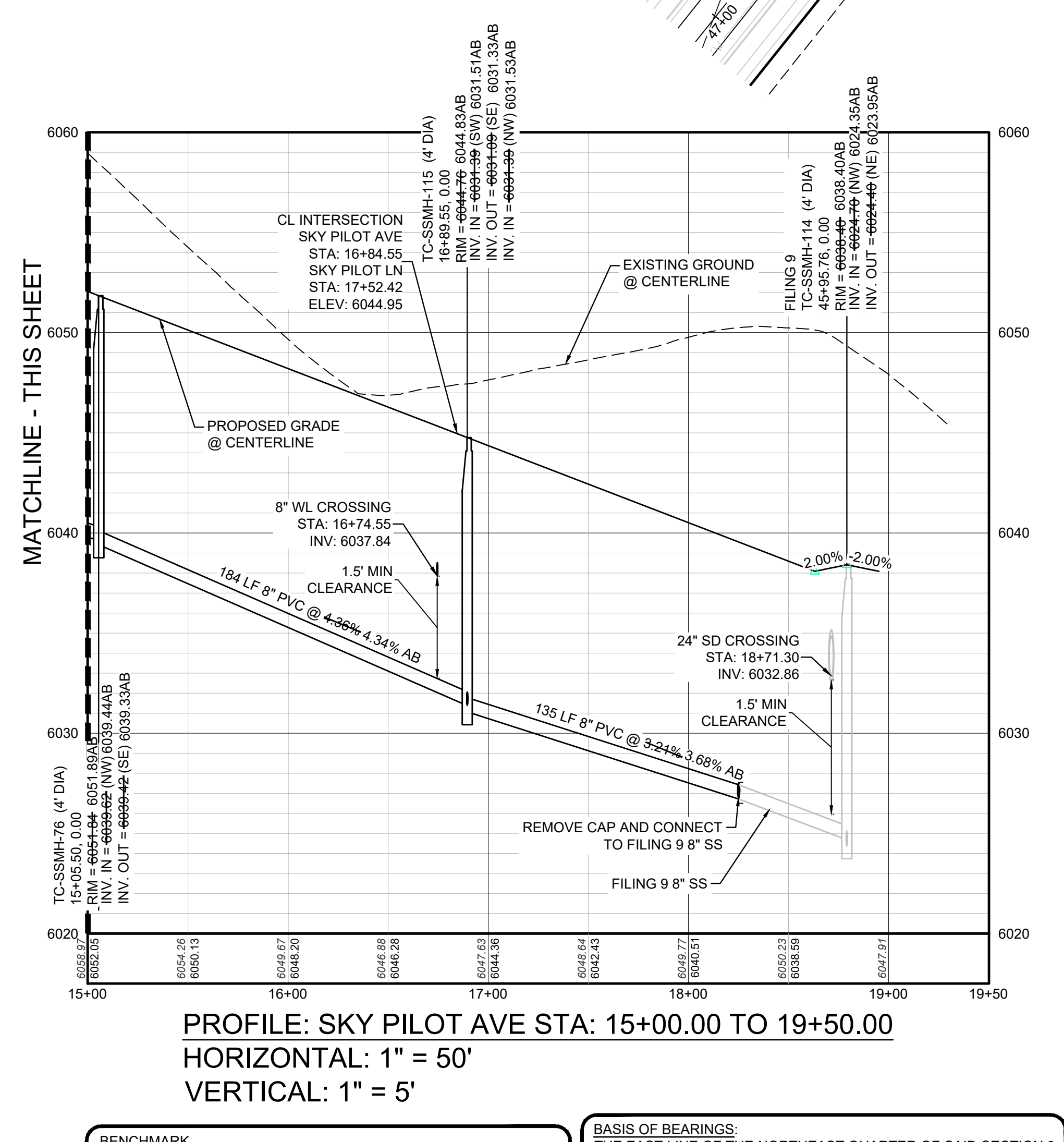
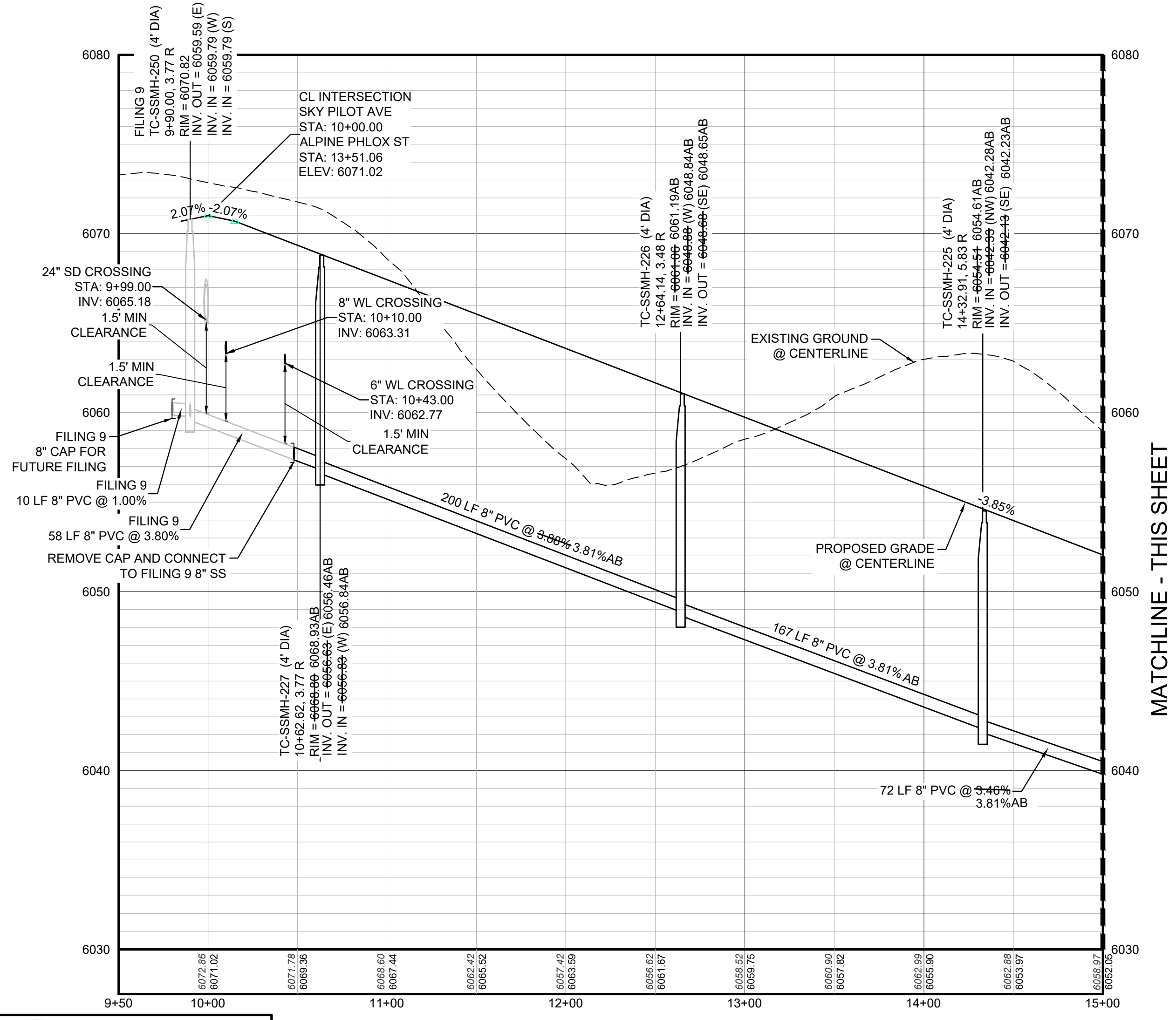


LEGEND

②	BLOCK NUMBER	△	PROPOSED RANGE POINT
Ⓐ	LOT TYPE	---	CENTERLINE
6	LOT NUMBER	---	RIGHT-OF-WAY
⊗	PROPOSED BUTTERFLY VALVE	---	PROPERTY LINE
⊠	PROPOSED CAP WITH END OF LINE BLOWOFF	---	EDGE OF PAVEMENT
⊞	PROPOSED REDUCER	→	PROPOSED DIRECTION OF FLOW
⊕	PROPOSED VALVE	1.0%	PROPOSED SLOPE & DIRECTION
⊖	PROPOSED FIRE HYDRANT	5615	EXISTING 5' CONTOUR
⊗	PROPOSED WL FITTING WITH THRUST BLOCK	5616	EXISTING 1' CONTOUR
⊘	PROPOSED FLARED END SECTION	5620	PROPOSED 5' CONTOUR
⊙	PROPOSED LOW POINT BLOW-OFF	5607	PROPOSED 1' CONTOUR
⊚	PROPOSED AIR VALVE	---	PROPOSED STORM DRAIN
⊛	FUTURE PHASE VALVE	---	PROPOSED SEWER LINE WITH MANHOLE
⊜	FUTURE FIRE HYDRANT	---	PROPOSED SEWER LATERAL
⊝	PROPOSED LIGHT POLE	---	PROPOSED WATER LINE
⊞	PROPOSED SIDEWALK	---	PROPOSED WATER LATERAL W/ METER
⊠	PROPOSED SIDEWALK RAMP	---	SECTION LINE
10.00	EXISTING ELEVATION	---	FILING BOUNDARY
10.00	EXISTING DESIGN ELEVATION	---	EXISTING FIBER
⊞	PROPOSED STORM DRAIN INLET	---	FO
⊞	PROPOSED STORM DRAIN MANHOLE	---	CH
		---	EXISTING OVERHEAD POWER
		---	EXISTING TELEPHONE LINE
		---	PWSD EASEMENT
		---	TYP. EASEMENT

ABBREVIATIONS

AD	ANGLE DIFFERENCE	MH	MANHOLE
AV	AIR VAC RELEASE VALVE	N.T.S.	NOT TO SCALE
BVC	BEGIN VERTICAL CURVE	PVC	POLYVINYL CHLORIDE
BVP	BEGIN VERTICAL PROFILE	PVI	PT. OF VERTICAL INTERSECTION
CBO	CAP WITH BLOW OFF	PVT	POINT OF VERTICAL TANGENT
CRR	CURB RETURN RADIUS	RCBC	REINFORCED CONCRETE BOX CULVERT
EL	ELEVATION	RCP	REINFORCED CONCRETE PIPE
EP	EDGE OF PAVEMENT	ROW	RIGHT OF WAY
EVC	END VERTICAL CURVE	SC	SANITARY CAP
EVP	END VERTICAL PROFILE	SD	STORM DRAIN
FG	FINISHED GROUND	SL	SECTION LINE
FH	FIRE HYDRANT	SS	SANITARY SEWER
FL	FLOW LINE	STA	STATION
GV	GATE VALVE	T.O.P.	TOP OF PIPE
HCR	HANDICAP CURB RAMP	UE	UTILITY EASEMENT
HP	HIGH POINT	VC	VERTICAL CURVE
INV	INVERT	WL	WATER LINE
K	CURVATURE COEFFICIENT	WLC	WATER LINE CONNECTION
LF	LINEAR FEET	WSE	WATER SURFACE ELEVATION



CALL 811
TWO WORKING DAYS
BEFORE YOU DIG
UNCC
1-800-922-1987

PROFILE: SKY PILOT AVENUE STA: 9+50.00 TO 15+00.00
HORIZONTAL: 1" = 50'
VERTICAL: 1" = 5'

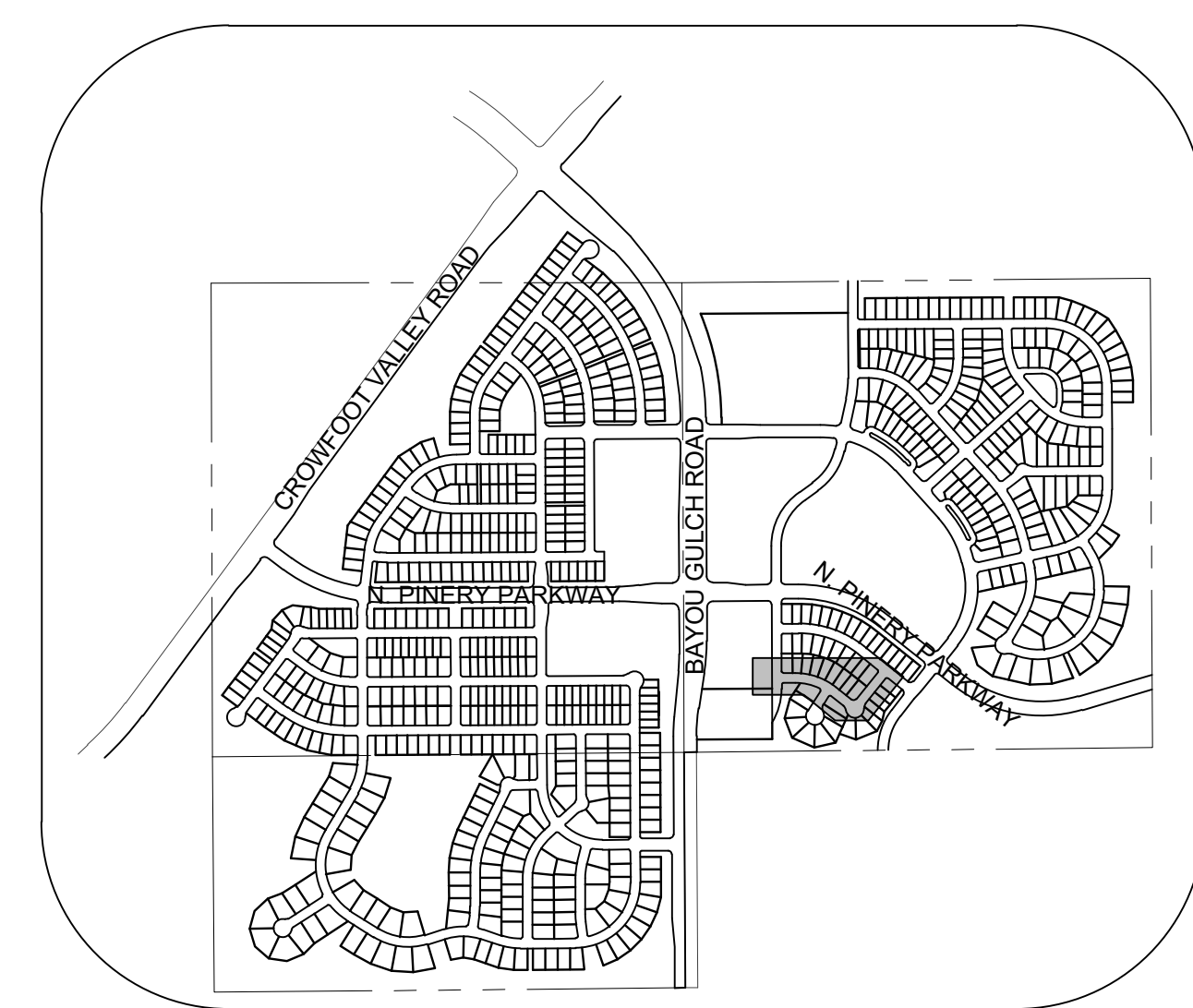
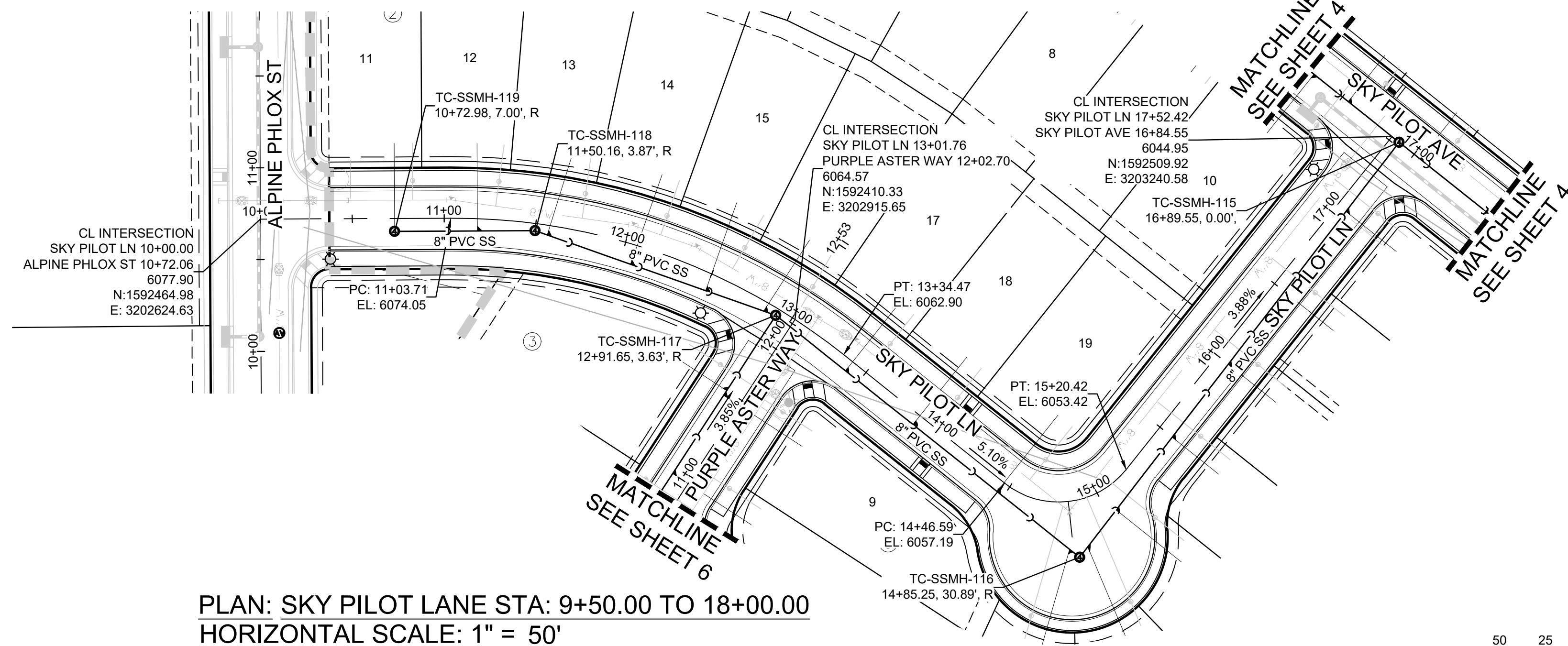
BENCHMARK
DOUGLAS COUNTY CONTROL POINT KNOWN AS 1.060032, BEING A 3-1/4" ALUMINUM CAP, BEING LOCATED IN THE SOUTHWEST QUARTER OF SECTION 33, TOWNSHIP 6 SOUTH, RANGE 86 WEST OF THE SIXTH PRINCIPAL MERIDIAN, HAVING A PUBLISHED ELEVATION OF 1799.2870 METERS (5903.13 FEET) NAVD '88 DATUM.

BASIS OF BEARINGS:
THE EAST LINE OF THE NORTHEAST QUARTER OF SAID SECTION 9 BEING MONUMENTED AT THE NORTHEAST CORNER OF SAID SECTION 9 BY A 3-1/4" ALUMINUM CAP STAMPED LS 23053 AND AT THE EAST QUARTER CORNER OF SAID SECTION 9 BY A 2-1/2" ALUMINUM CAP STAMPED LS 6935 BEING CONSIDERED TO BEAR SOUTH 00°15'06" EAST, 2648.70 FEET.

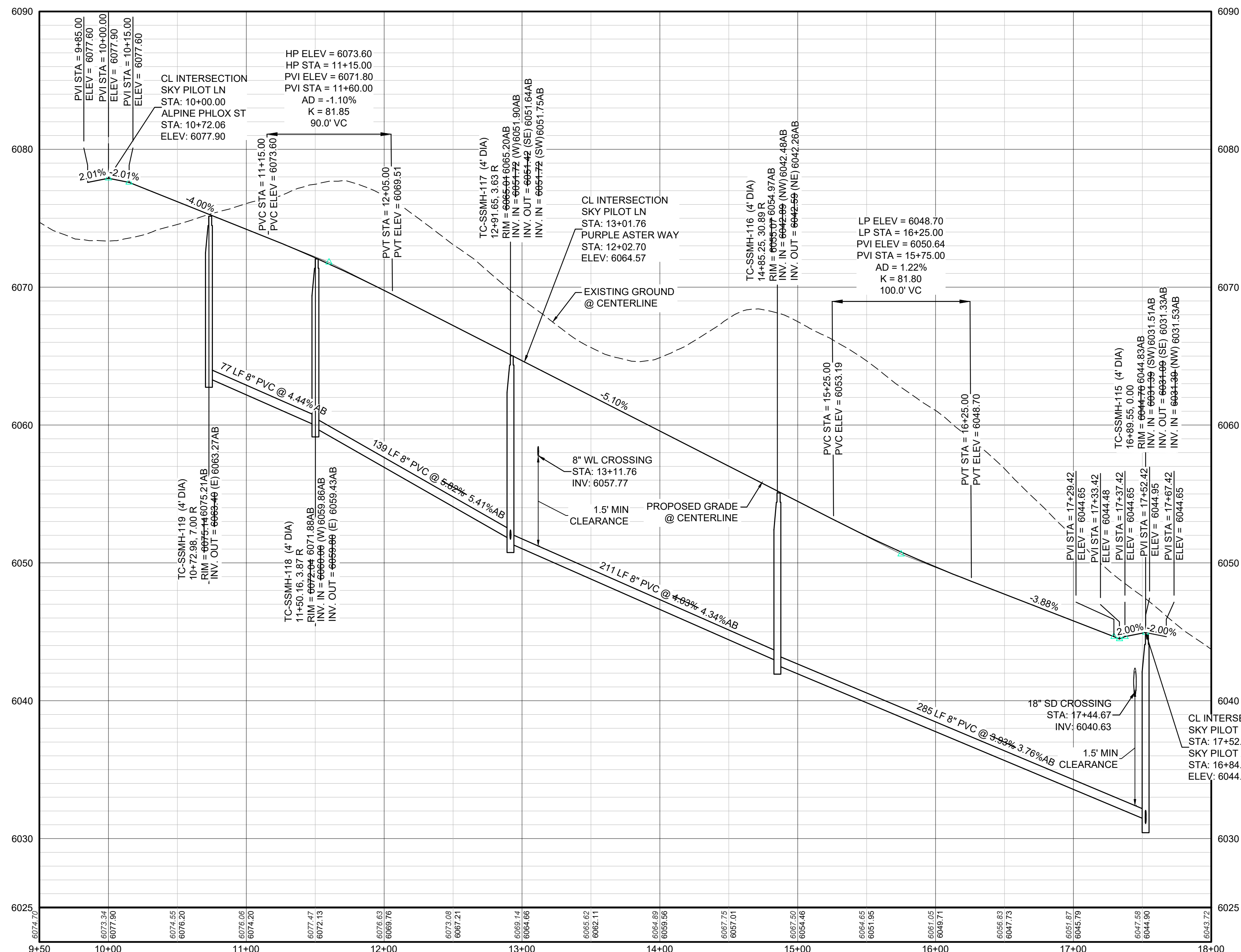
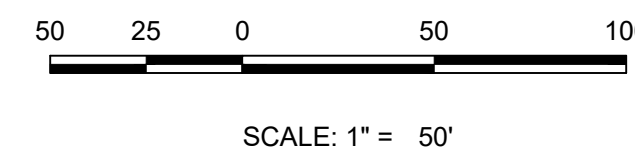
PREPARED UNDER THE SUPERVISION OF

BRIAN P. WILSON
COLORADO P.E. 0050067

10333 E. Dry Creek Rd. Suite 240 Englewood, CO 80112 Tel: (720) 482-9528 Fax: (720) 482-9546	Revisions	No.	Date	Appr.	Date
	TRAILS AT CROWFOOT FILING 13 CONSTRUCTION DRAWINGS SANITARY SEWER PLAN AND PROFILE SKY PILOT AVENUE				
	HR 935 LLC 7353 South Alton Way CENTENNIAL, CO 80112	SCALE:	AS SHOWN	FILE NO:	8130283701
DRAWN BY:	JLR	CHECKED BY:	JJU	DATE:	SEPTEMBER 2017
SHEET NUMBER	4				



KEYMAP
N.T.S.
LEGEND



②	BLOCK NUMBER	△	PROPOSED RANGE POINT
Ⓐ	LOT TYPE	---	CENTERLINE
6	LOT NUMBER	---	RIGHT-OF-WAY
⊕	PROPOSED BUTTERFLY VALVE	---	PROPERTY LINE
⌋	PROPOSED CAP WITH END OF LINE BLOWOFF	---	EDGE OF PAVEMENT
⊖	PROPOSED REDUCER	→	PROPOSED DIRECTION OF FLOW
⊕	PROPOSED VALVE	1.0%	PROPOSED SLOPE & DIRECTION
⊕	PROPOSED FIRE HYDRANT	---	EXISTING 5' CONTOUR
⊕	PROPOSED WL FITTING WITH THRUST BLOCK	---	EXISTING 1' CONTOUR
⊕	PROPOSED FLARED END SECTION	---	PROPOSED 5' CONTOUR
⊕	PROPOSED LOW POINT BLOW-OFF	---	PROPOSED 1' CONTOUR
⊕	PROPOSED AIR VALVE	---	PROPOSED STORM DRAIN
⊕	FUTURE PHASE VALVE	---	PROPOSED SEWER LINE WITH MANHOLE
⊕	FUTURE FIRE HYDRANT	---	PROPOSED SEWER LATERAL
⊕	PROPOSED LIGHT POLE	---	PROPOSED WATER LINE
⊕	PROPOSED SIDEWALK	---	PROPOSED WATER LATERAL W/ METER
⊕	PROPOSED SIDEWALK RAMP	---	SECTION LINE
10.00	EXISTING ELEVATION	---	FILING BOUNDARY
10.00	PROPOSED DESIGN ELEVATION	---	EXISTING FIBER
⊕	PROPOSED STORM DRAIN INLET	---	OPTIC LINE
⊕	PROPOSED STORM DRAIN MANHOLE	---	EXISTING OVERHEAD POWER
		---	EXISTING TELEPHONE LINE
		---	PWSD EASEMENT
		---	TYP. EASEMENT

ABBREVIATIONS

AD	ANGLE DIFFERENCE	MH	MANHOLE
AV	AIR VAC RELEASE VALVE	N.T.S.	NOT TO SCALE
BVC	BEGIN VERTICAL CURVE	PVC	POLYVINYL CHLORIDE
BVP	BEGIN VERTICAL PROFILE	PVI	PT. OF VERTICAL INTERSECTION
CBD	CAP WITH BLOW OFF	PVT	POINT OF VERTICAL TANGENT
CRR	CURB RETURN RADIUS	RCBC	REINFORCED CONCRETE BOX CULVERT
EL	ELEVATION	ROP	REINFORCED CONCRETE PIPE
EP	EDGE OF PAVEMENT	ROW	RIGHT OF WAY
EVC	END VERTICAL CURVE	SC	SANITARY CAP
EVP	END VERTICAL PROFILE	SD	STORM DRAIN
FG	FINISHED GROUND	SL	SECTION LINE
FH	FIRE HYDRANT	SS	SANITARY SEWER
FL	FLOW LINE	STA	STATION
GV	GATE VALVE	T.O.P.	TOP OF PIPE
HCR	HANDICAP CURB RAMP	UE	UTILITY EASEMENT
HP	HIGH POINT	VC	VERTICAL CURVE
INV	INVERT	WL	WATER LINE
K	CURVATURE COEFFICIENT	WLC	WATER LINE CONNECTION
LF	LINEAR FEET	WSE	WATER SURFACE ELEVATION

1. SEE SHEET 3 - AREA UTILITY PLAN FOR SANITARY SERVICE TABLES.

CALL 811
TWO WORKING DAYS
BEFORE YOU DIG
UNCC
1-800-922-1987

PROFILE: SKY PILOT LN STA: 9+50.00 TO 18+00.00
HORIZONTAL: 1" = 50'
VERTICAL: 1" = 5'

BENCHMARK
DOUGLAS COUNTY CONTROL POINT KNOWN AS 1.060032, BEING A 3-1/4" ALUMINUM CAP, BEING LOCATED IN THE SOUTHWEST QUARTER OF SECTION 33, TOWNSHIP 6 SOUTH, RANGE 86 WEST OF THE SIXTH PRINCIPAL MERIDIAN, HAVING A PUBLISHED ELEVATION OF 1799.2870 METERS (5903.13 FEET) NAVD '88 DATUM.

BASIS OF BEARINGS:
THE EAST LINE OF THE NORTHEAST QUARTER OF SAID SECTION 9 BEING MONUMENTED AT THE NORTHEAST CORNER OF SAID SECTION 9 BY A 3-1/4" ALUMINUM CAP STAMPED LS 23053 AND AT THE EAST QUARTER CORNER OF SAID SECTION 9 BY A 2-1/2" ALUMINUM CAP STAMPED LS 6935 BEING CONSIDERED TO BEAR SOUTH 00°15'06" EAST, 2648.70 FEET.

PREPARED UNDER THE SUPERVISION OF
BRIAN P. WILSON
COLORADO P.E. 0050067

10333 E. Dry Creek Rd. Suite 240
Englewood, CO 80112
Tel: (720) 482-9529
Fax: (720) 482-9546

CVL CONSULTANTS

HR 935 LLC
7353 South Alton Way
CENTENNIAL, CO 80112

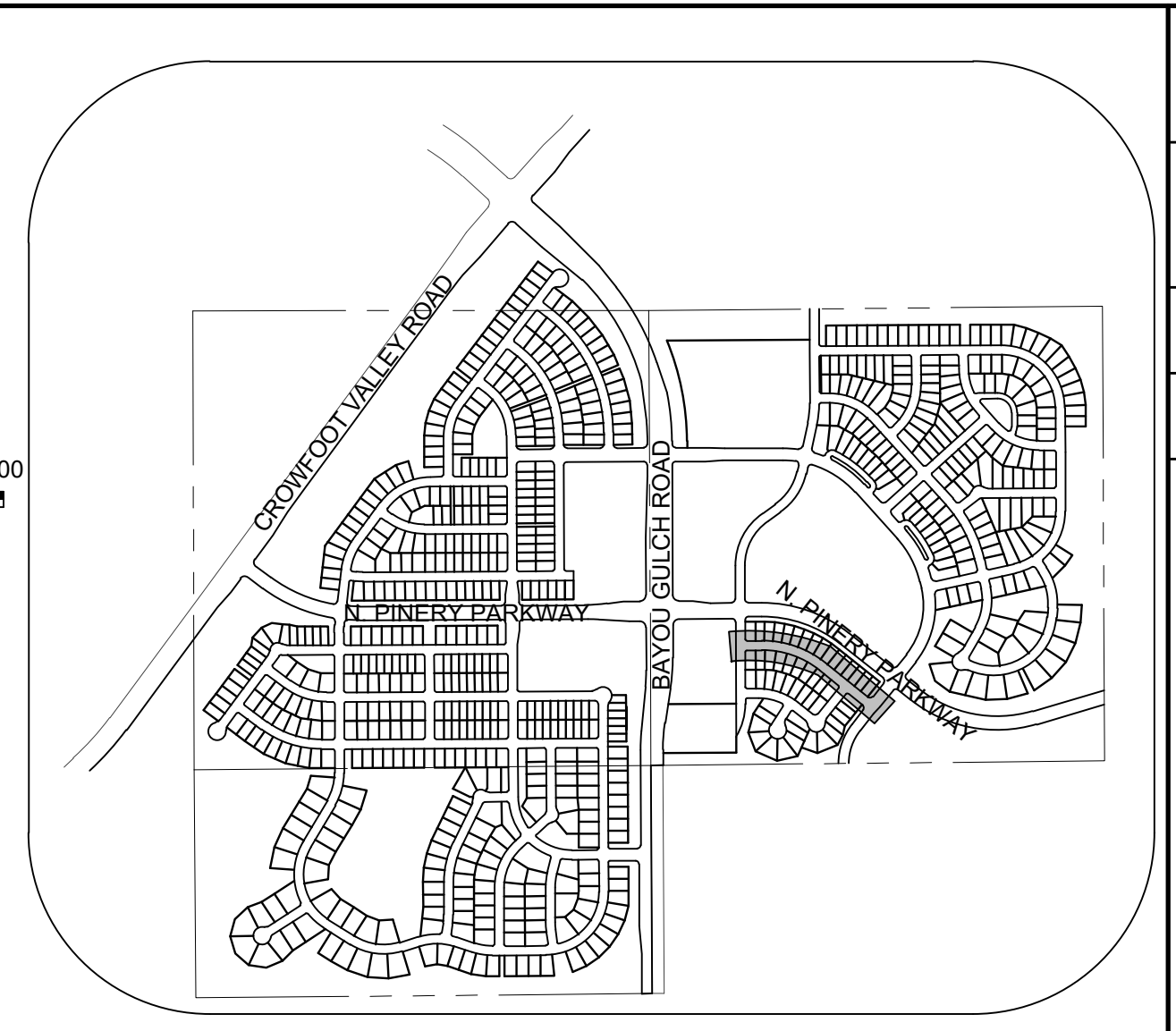
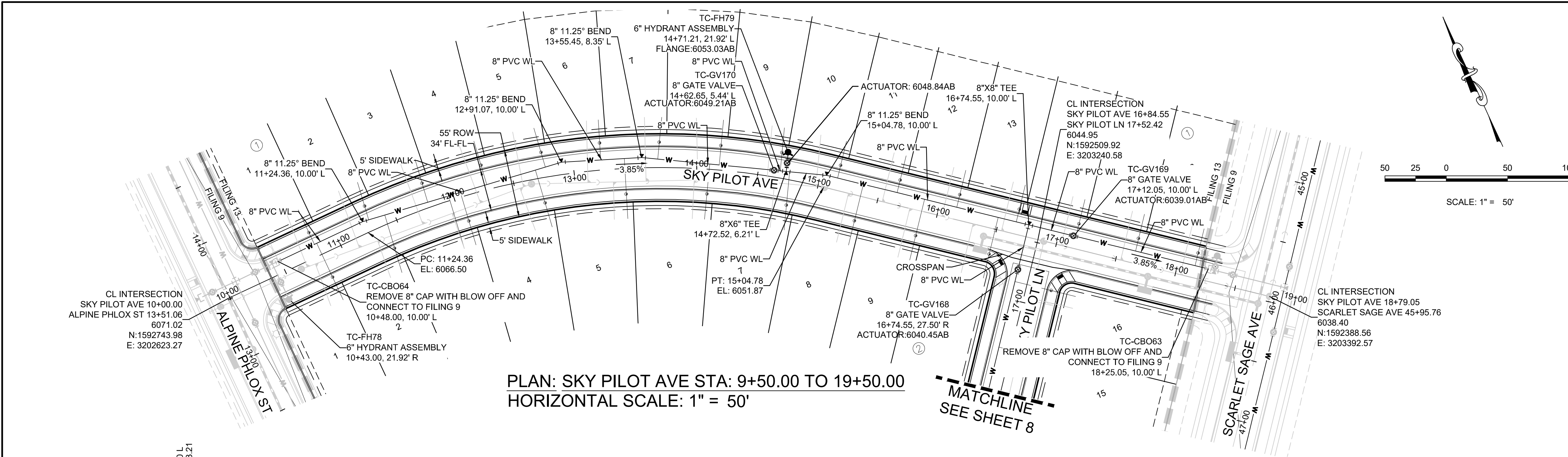
TRAILS AT CROWFOOT
FILING 13 CONSTRUCTION DRAWINGS
SANITARY SEWER PLAN AND PROFILE
SKY PILOT LANE

SCALE: AS SHOWN
FILE NO: 8130283701

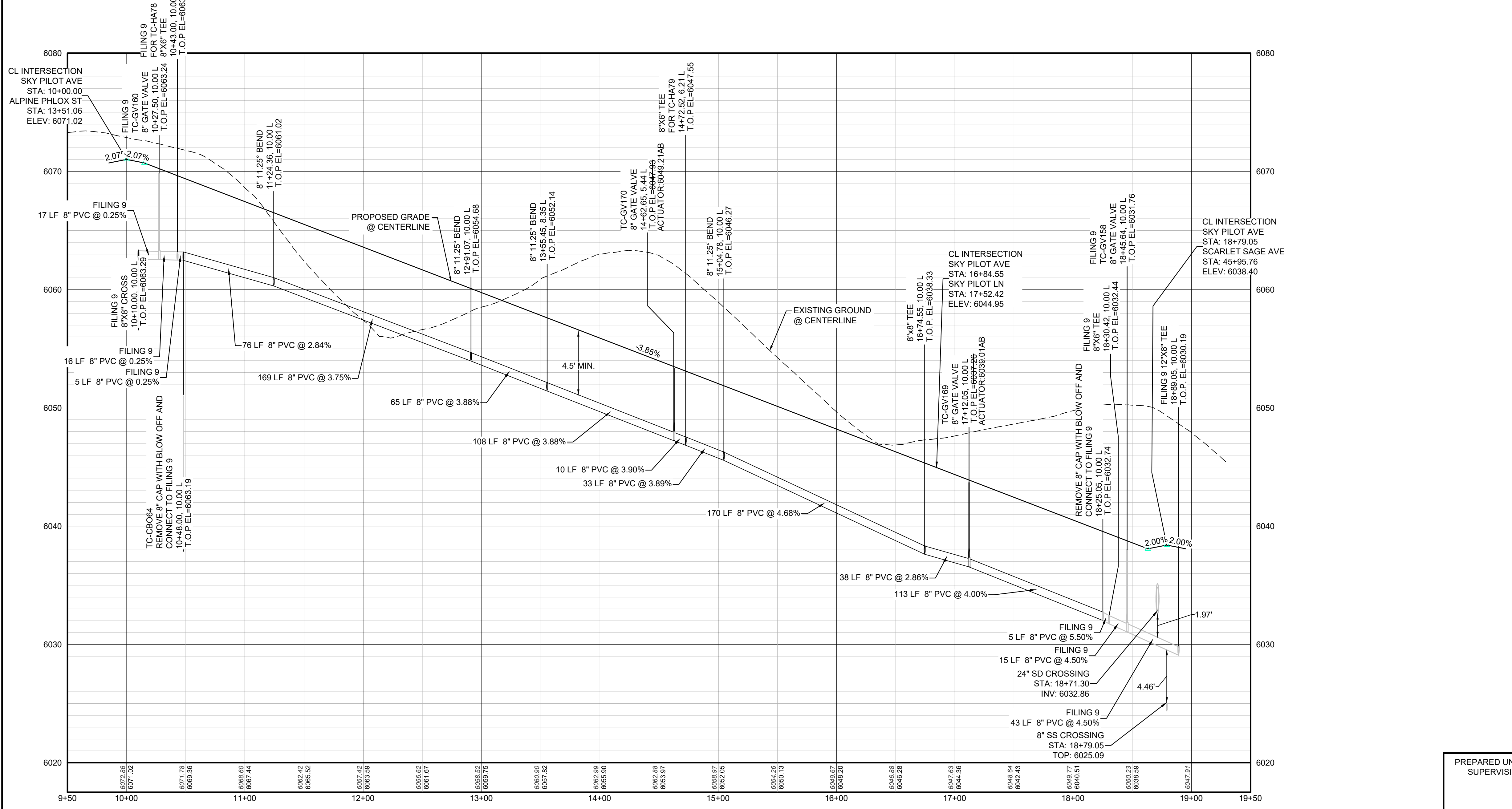
DRAWN BY: JLR
CHECKED BY: JLU
DATE: SEPTEMBER 2017

SHEET NUMBER: 5

No.	Revisions	Date	Appr.	Date



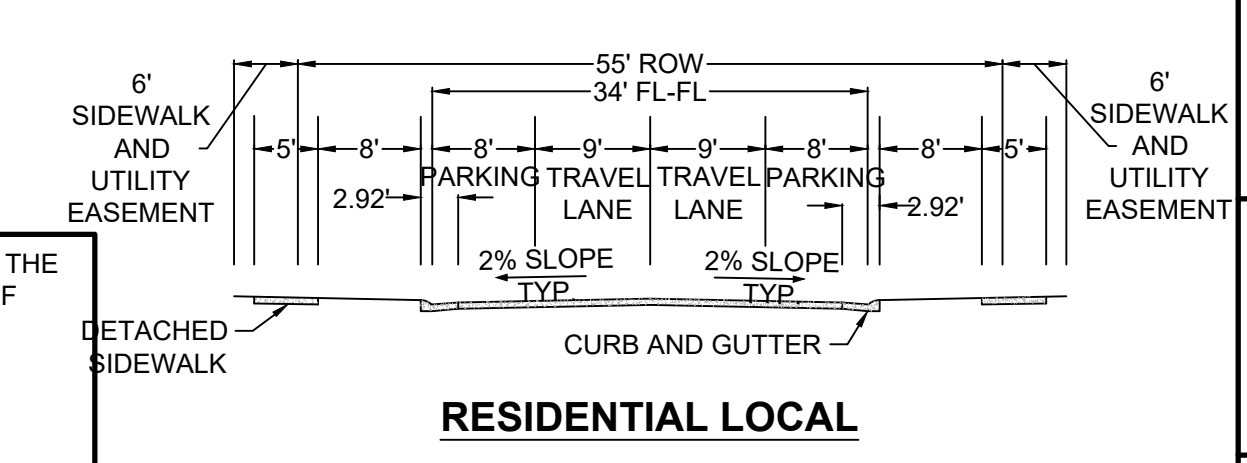
PLAN: SKY PILOT AVE STA: 9+50.00 TO 19+50.00
HORIZONTAL SCALE: 1" = 50'



PROFILE: SKY PILOT AVE STA: 9+50.00 TO 19+50.00
HORIZONTAL: 1" = 50'
VERTICAL: 1" = 5'

LEGEND	
(2) BLOCK NUMBER	△ PROPOSED RANGE POINT
(A) LOT TYPE	--- CENTERLINE
6 LOT NUMBER	--- RIGHT-OF-WAY
PROPOSED BUTTERFLY VALVE	--- PROPERTY LINE
PROPOSED CAP WITH END OF LINE BLOW OFF	--- EDGE OF PAVEMENT
PROPOSED REDUCER	→ PROPOSED DIRECTION OF FLOW
PROPOSED VALVE	1.0% PROPOSED SLOPE & DIRECTION
PROPOSED FIRE HYDRANT	5615 EXISTING 5' CONTOUR
PROPOSED WL FITTING WITH THRUST BLOCK	5616 EXISTING 1' CONTOUR
PROPOSED FLARED END SECTION	5620 PROPOSED 5' CONTOUR
PROPOSED LOW POINT BLOW-OFF	5607 PROPOSED 1' CONTOUR
PROPOSED AIR VALVE	--- PROPOSED STORM DRAIN
FUTURE PHASE VALVE	--- PROPOSED SEWER LINE WITH MANHOLE
FUTURE FIRE HYDRANT	--- PROPOSED SEWER LATERAL
PROPOSED LIGHT POLE	--- PROPOSED WATER LINE
PROPOSED SIDEWALK RAMP	--- PROPOSED WATER LATERAL W/ METER
10.00 EXISTING ELEVATION	--- SECTION LINE
10.00 PROPOSED DESIGN ELEVATION	--- FIBER BOUNDARY
PROPOSED STORM DRAIN INLET	--- FO EXISTING FIBER
PROPOSED STORM DRAIN MANHOLE	--- OH EXISTING OVERHEAD POWER
	--- TEL EXISTING TELEPHONE LINE
	--- PWS D EASEMENT
	--- TYP. EASEMENT

ABBREVIATIONS	
AD ANGLE DIFFERENCE	MH MANHOLE
AV AIR VAC RELEASE VALVE	N.T.S. NOT TO SCALE
BVC BEGIN VERTICAL CURVE	PVC POLYVINYL CHLORIDE
BVP BEGIN VERTICAL PROFILE	PVI PT. OF VERTICAL INTERSECTION
CBP CAP WITH BLOW OFF	PVT POINT OF VERTICAL TANGENT
CRR CURB RETURN RADIUS	RCBC REINFORCED CONCRETE BOX CULVERT
EL ELEVATION	RCP REINFORCED CONCRETE PIPE
EP EDGE OF PAVEMENT	ROW RIGHT OF WAY
EVC END VERTICAL CURVE	SC SANITARY CAP
EVP END VERTICAL PROFILE	SD STORM DRAIN
FG FINISHED GROUND	SL SECTION LINE
FH FIRE HYDRANT	SS SANITARY SEWER
FL FLOW LINE	STA STATION
GV GATE VALVE	T.O.P. TOP OF PIPE
HCR HANDICAP CURB RAMP	UE UTILITY EASEMENT
HP HIGH POINT	VC VERTICAL CURVE
INV INVERT	WL WATER LINE
K CURVATURE COEFFICIENT	WLC WATER LINE CONNECTION
LF LINEAR FEET	WSE WATER SURFACE ELEVATION



1. SEE SHEET 3 - AREA UTILITY PLAN FOR WATER SERVICE TABLES.

CALL 811
TWO WORKING DAYS
BEFORE YOU DIG
UNCC
1-800-922-1987

BENCHMARK
DOUGLAS COUNTY CONTROL POINT KNOWN AS 1.060032, BEING A 3-1/4" ALUMINUM CAP, BEING LOCATED IN THE SOUTHWEST QUARTER OF SECTION 33, TOWNSHIP 6 SOUTH, RANGE 86 WEST OF THE SIXTH PRINCIPAL MERIDIAN, HAVING A PUBLISHED ELEVATION OF 1799.2870 METERS (5903.13 FEET) NAVD '88 DATUM.

BASIS OF BEARINGS:
THE EAST LINE OF THE NORTHEAST QUARTER OF SAID SECTION 9 BEING MONUMENTED AT THE NORTHEAST CORNER OF SAID SECTION 9 BY A 3-1/4" ALUMINUM CAP STAMPED LS 23053 AND AT THE EAST QUARTER CORNER OF SAID SECTION 9 BY A 2-1/2" ALUMINUM CAP STAMPED LS 6935 BEING CONSIDERED TO BEAR SOUTH 00°15'06" EAST, 2648.70 FEET.

BRIAN P. WILSON
COLORADO P.E. 0050067

SHEET NUMBER	DRAWN BY:	CHECKED BY:	DATE:	Revisions		Date	Appr.	Date
				No.				
7	RHR	JJ	SEPTEMBER 2017					

HR 935 LLC
7353 South Alton Way
CENTENNIAL, CO 80112

TRAILS AT CROWFOOT
FILING 13 CONSTRUCTION DRAWINGS
WATER PLAN & PROFILE
SKY PILOT AVENUE

10335 E. Dry Creek Rd.
Suite 240
Englewood, CO 80112
Tel: (720) 482-9526
Fax: (720) 482-9546
CVL CONSULTANTS

