

TRAILS AT CROWFOOT MIXED USE PRELIMINARY PLAT

A REPLAT OF TRACTS C, G, TRAILS AT CROWFOOT FILING NO. 1 AND TRACT D, TRAILS AT CROWFOOT FILING NO. 9
 A PART OF SECTION 9, TOWNSHIP 7 SOUTH, RANGE 66 WEST OF THE 6TH PRINCIPAL MERIDIAN,
 TOWN OF PARKER, COUNTY OF DOUGLAS, STATE OF COLORADO
 SHEET 5 OF 8

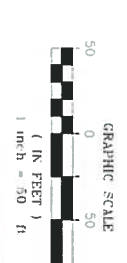
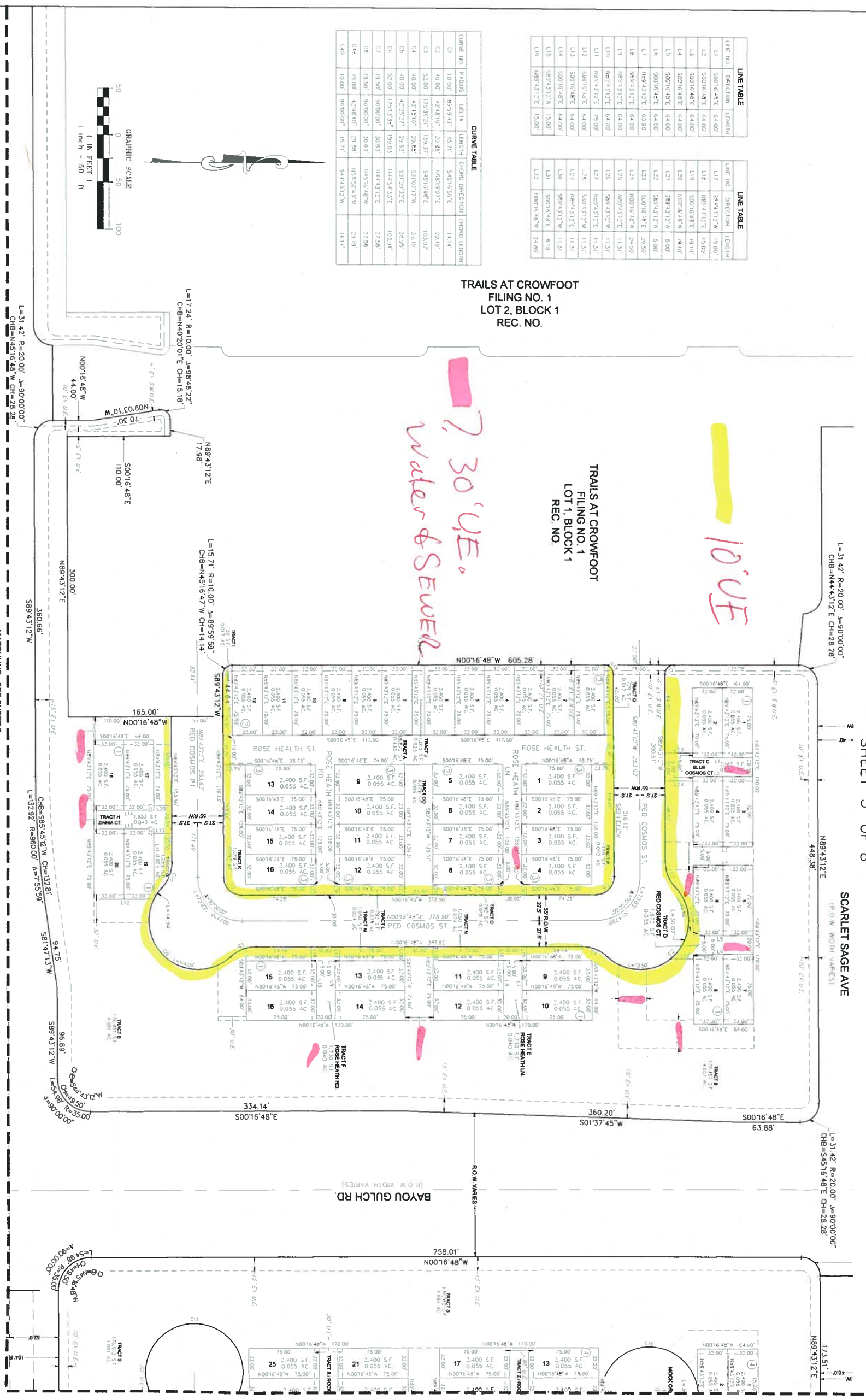
LINE NO.	DIRECTION	LENGTH	LINE NO.	DIRECTION	LENGTH
L1	S00°16'48"E	64.00'	L16	S00°16'48"E	15.00'
L2	S00°16'48"E	64.00'	L17	S00°16'48"E	15.00'
L3	S00°16'48"E	64.00'	L18	N89°43'12"E	15.00'
L4	S00°16'48"E	64.00'	L19	S00°16'48"E	19.10'
L5	S00°16'48"E	64.00'	L20	N00°16'48"E	19.10'
L6	S00°16'48"E	64.00'	L21	S89°43'12"W	5.00'
L7	N89°43'12"E	64.00'	L22	S89°43'12"W	5.00'
L8	N89°43'12"E	64.00'	L23	S00°16'48"E	29.50'
L9	N89°43'12"E	64.00'	L24	N00°16'48"W	29.50'
L10	N89°43'12"E	64.00'	L25	N89°43'12"E	11.31'
L11	N89°43'12"E	75.00'	L26	S89°43'12"W	11.31'
L12	S00°16'48"E	64.00'	L27	N89°43'12"E	11.31'
L13	S00°16'48"E	64.00'	L28	S00°16'48"E	11.31'
L14	S00°16'48"E	64.00'	L29	N89°43'12"E	11.31'
L15	S89°43'12"W	15.00'	L30	S89°43'12"W	11.31'
L16	N89°43'12"E	15.00'	L31	S00°16'48"E	61.51'
			L32	N00°16'48"W	24.00'

CURVE NO.	RADIUS	DELTA	LENGTH	CURVE DIRECTION	CHORD LENGTH
C1	10.00'	57°59'42"	19.71'	S45°16'56"E	14.14'
C2	40.00'	42°48'10"	29.25'	N68°19'07"E	22.14'
C3	52.00'	17°59'23"	159.37'	S45°16'48"E	103.07'
C4	40.00'	42°48'10"	29.25'	S21°07'17"W	22.14'
C5	40.00'	42°48'10"	29.25'	S21°07'17"E	22.14'
C6	52.00'	17°59'23"	159.03'	N44°54'31"E	103.04'
C7	19.50'	90°00'00"	30.63'	N44°43'12"E	21.58'
C8	19.50'	90°00'00"	30.63'	N45°15'48"W	21.58'
C9	40.00'	42°48'10"	29.25'	N89°32'43"W	22.14'
C10	10.00'	90°00'00"	15.71'	S44°43'12"W	14.14'

TRAILS AT CROWFOOT
 FILING NO. 1
 LOT 2, BLOCK 1
 REC. NO.

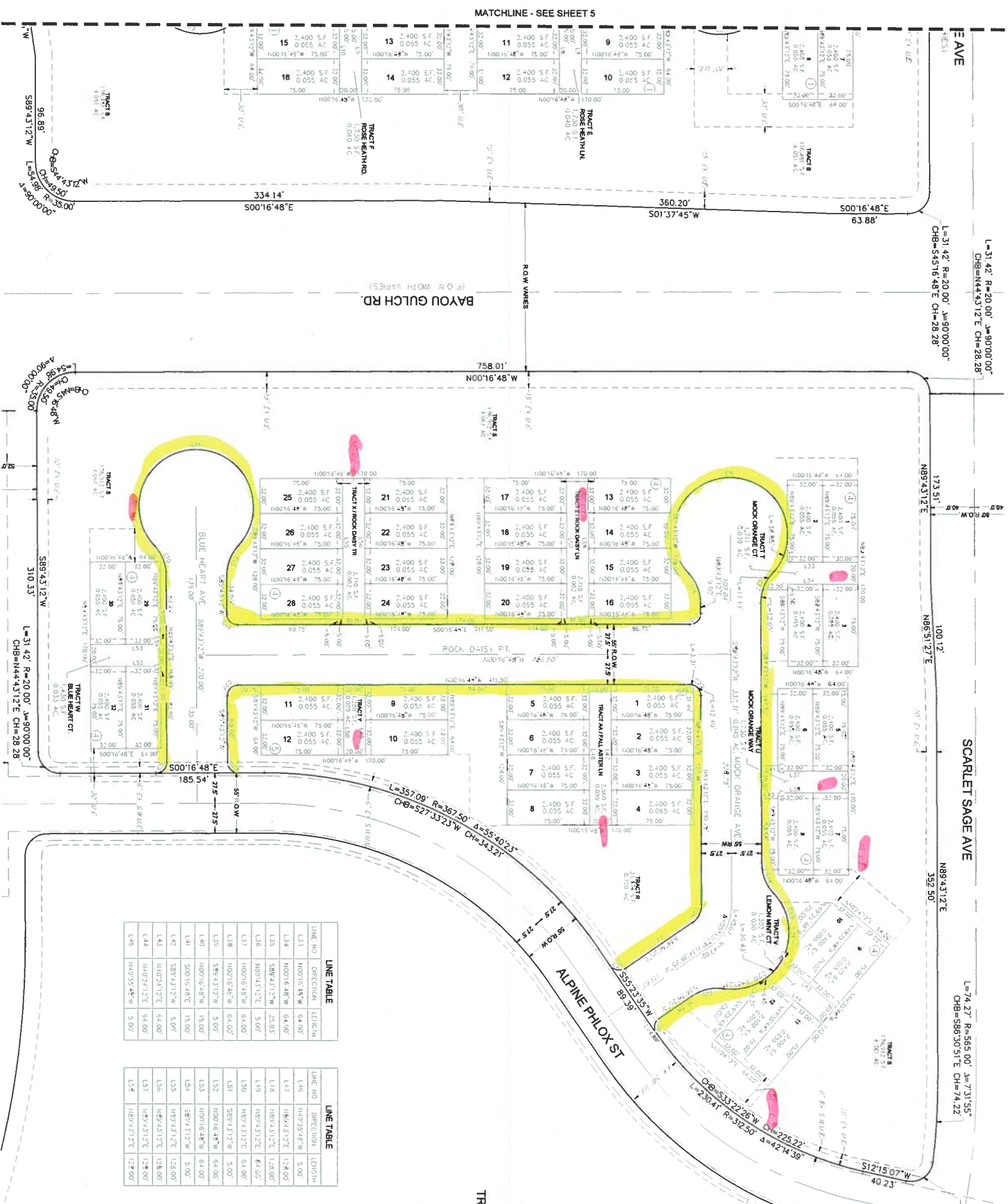
TRAILS AT CROWFOOT
 FILING NO. 1
 LOT 1, BLOCK 1
 REC. NO.

Handwritten: 230' UE
 Water & Sewer



TRAILS AT CROWFOOT MIXED USE PRELIMINARY PLAT

A REPLAT OF TRACTS C, G, TRAILS AT CROWFOOT FILING NO. 1 AND TRACT D, TRAILS AT CROWFOOT FILING NO. 9
 A PART OF SECTION 9, TOWNSHIP 7 SOUTH, RANGE 66 WEST OF THE 6th PRINCIPAL MERIDIAN,
 TOWN OF PARKER, COUNTY OF DOUGLAS, STATE OF COLORADO
 SHEET 6 OF 8



TRAILS AT CROWFOOT
 FILING NO. 9
 TRACT E
 REC. NO.

10' UE
 ? 30' UE
 Water & Sewer

LINE NO.	DIRECTION	LENGTH
L1	N00°16'48"W	64.00'
L2	S00°16'48"E	64.00'
L3	N00°16'48"W	64.00'
L4	S00°16'48"E	64.00'
L5	N00°16'48"W	64.00'
L6	S00°16'48"E	64.00'
L7	N00°16'48"W	64.00'
L8	S00°16'48"E	64.00'
L9	N00°16'48"W	64.00'
L10	S00°16'48"E	64.00'
L11	N00°16'48"W	64.00'
L12	S00°16'48"E	64.00'
L13	N00°16'48"W	64.00'
L14	S00°16'48"E	64.00'
L15	N00°16'48"W	64.00'
L16	S00°16'48"E	64.00'
L17	N00°16'48"W	64.00'
L18	S00°16'48"E	64.00'
L19	N00°16'48"W	64.00'
L20	S00°16'48"E	64.00'
L21	N00°16'48"W	64.00'
L22	S00°16'48"E	64.00'
L23	N00°16'48"W	64.00'
L24	S00°16'48"E	64.00'
L25	N00°16'48"W	64.00'
L26	S00°16'48"E	64.00'
L27	N00°16'48"W	64.00'
L28	S00°16'48"E	64.00'

LINE NO.	DIRECTION	LENGTH
L1	N00°16'48"W	64.00'
L2	S00°16'48"E	64.00'
L3	N00°16'48"W	64.00'
L4	S00°16'48"E	64.00'
L5	N00°16'48"W	64.00'
L6	S00°16'48"E	64.00'
L7	N00°16'48"W	64.00'
L8	S00°16'48"E	64.00'
L9	N00°16'48"W	64.00'
L10	S00°16'48"E	64.00'
L11	N00°16'48"W	64.00'
L12	S00°16'48"E	64.00'
L13	N00°16'48"W	64.00'
L14	S00°16'48"E	64.00'
L15	N00°16'48"W	64.00'
L16	S00°16'48"E	64.00'
L17	N00°16'48"W	64.00'
L18	S00°16'48"E	64.00'
L19	N00°16'48"W	64.00'
L20	S00°16'48"E	64.00'
L21	N00°16'48"W	64.00'
L22	S00°16'48"E	64.00'
L23	N00°16'48"W	64.00'
L24	S00°16'48"E	64.00'
L25	N00°16'48"W	64.00'
L26	S00°16'48"E	64.00'
L27	N00°16'48"W	64.00'
L28	S00°16'48"E	64.00'

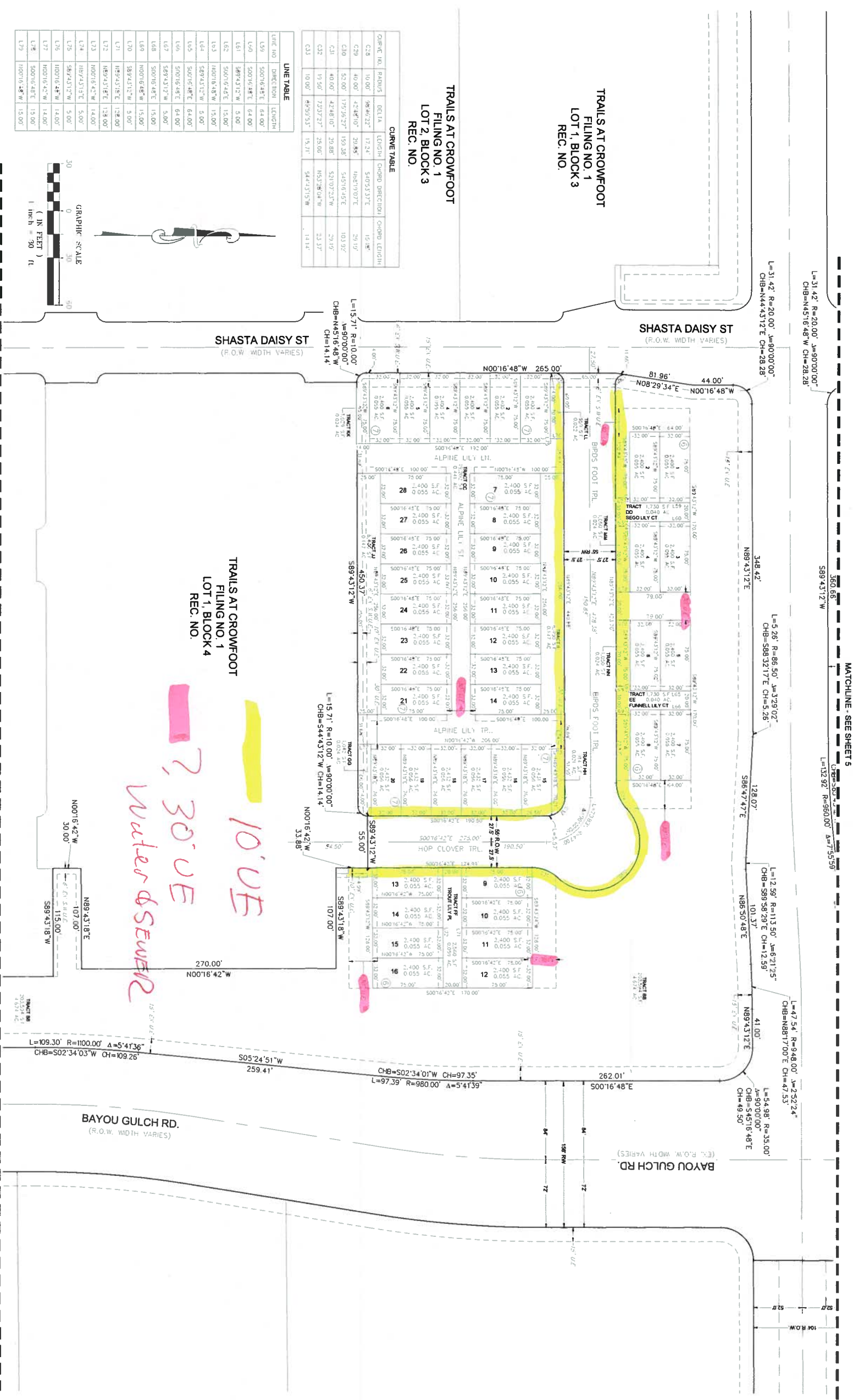
CURVE NO.	RADIUS	DELTA	LENGTH	CHORD DIRECTION	CHORD LENGTH
C1	10.00'	90°00'00"	15.71'	N45°16'48"W	14.14'
C2	10.00'	90°00'00"	15.71'	N45°16'48"W	14.14'
C3	10.00'	90°00'00"	15.71'	N45°16'48"W	14.14'
C4	10.00'	90°00'00"	15.71'	N45°16'48"W	14.14'
C5	10.00'	90°00'00"	15.71'	N45°16'48"W	14.14'
C6	10.00'	90°00'00"	15.71'	N45°16'48"W	14.14'
C7	10.00'	90°00'00"	15.71'	N45°16'48"W	14.14'
C8	10.00'	90°00'00"	15.71'	N45°16'48"W	14.14'
C9	10.00'	90°00'00"	15.71'	N45°16'48"W	14.14'
C10	10.00'	90°00'00"	15.71'	N45°16'48"W	14.14'
C11	10.00'	90°00'00"	15.71'	N45°16'48"W	14.14'
C12	10.00'	90°00'00"	15.71'	N45°16'48"W	14.14'
C13	10.00'	90°00'00"	15.71'	N45°16'48"W	14.14'
C14	10.00'	90°00'00"	15.71'	N45°16'48"W	14.14'
C15	10.00'	90°00'00"	15.71'	N45°16'48"W	14.14'
C16	10.00'	90°00'00"	15.71'	N45°16'48"W	14.14'
C17	10.00'	90°00'00"	15.71'	N45°16'48"W	14.14'
C18	10.00'	90°00'00"	15.71'	N45°16'48"W	14.14'
C19	10.00'	90°00'00"	15.71'	N45°16'48"W	14.14'
C20	10.00'	90°00'00"	15.71'	N45°16'48"W	14.14'
C21	10.00'	90°00'00"	15.71'	N45°16'48"W	14.14'
C22	10.00'	90°00'00"	15.71'	N45°16'48"W	14.14'
C23	10.00'	90°00'00"	15.71'	N45°16'48"W	14.14'
C24	10.00'	90°00'00"	15.71'	N45°16'48"W	14.14'
C25	10.00'	90°00'00"	15.71'	N45°16'48"W	14.14'
C26	10.00'	90°00'00"	15.71'	N45°16'48"W	14.14'
C27	10.00'	90°00'00"	15.71'	N45°16'48"W	14.14'



ENGINEER/SURVEYOR
CVL Consultants
 of Colorado, Inc.
 10333 E. Dry Creek Rd. Suite 240
 Englewood, CO 80112
 Tel: (720) 482-9528 / Fax: (720) 482-9546

TRAILS AT CROWFOOT MIXED USE PRELIMINARY PLAT

A REPLAT OF TRACTS C, G, TRAILS AT CROWFOOT FILING NO. 1 AND TRACT D, TRAILS AT CROWFOOT FILING NO. 9
 A PART OF SECTION 9, TOWNSHIP 7 SOUTH, RANGE 66 WEST OF THE 6TH PRINCIPAL MERIDIAN,
 TOWN OF PARKER, COUNTY OF DOUGLAS, STATE OF COLORADO
 SHEET 7 OF 8

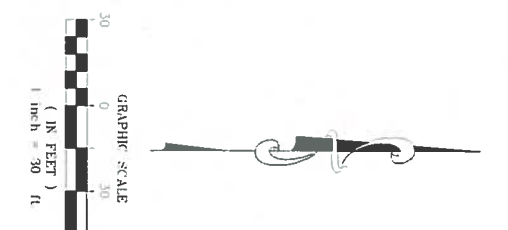


CURVE TABLE

CURVE NO.	BEARINGS	DELTA	LENGTH	CHORD	DIRECTION	CHORD LENGTH
C28	10.00°	186.6122°	12.24'	5.4053137'E	15.18'	
C29	40.00°	42.4810°	20.88'	106.19107°E	20.19'	
C40	52.00°	175.1627°	150.38'	5.4516455'E	101.92'	
C41	40.00°	42.4810°	20.88'	52.107233°W	20.19'	
C42	19.50°	72.3727°	28.00'	163.28104°W	22.33'	
C43	10.00°	186.6122°	12.24'	54.44315°W	14.14'	

LINE TABLE

LINE NO.	DIRECTION	LENGTH
L99	S00°16'48"E	64.00'
L40	S00°16'48"E	64.00'
L51	S89°43'12"W	5.00'
L62	S00°16'48"E	15.00'
L63	N00°16'48"W	15.00'
L64	S89°43'12"W	5.00'
L65	S00°16'48"E	64.00'
L66	S00°16'48"E	64.00'
L67	S89°43'12"W	5.00'
L68	S00°16'48"E	15.00'
L69	N00°16'48"W	15.00'
L70	S89°43'12"W	5.00'
L71	N89°43'18"E	128.00'
L72	N89°43'18"E	128.00'
L73	N00°16'42"W	14.00'
L74	N00°16'42"W	5.00'
L75	S89°43'12"W	5.00'
L76	N00°16'48"W	14.00'
L77	N00°16'42"W	14.00'
L78	S00°16'48"E	15.00'
L79	N00°16'48"W	15.00'



MATCHLINE - SEE SHEET 8

MATCHLINE - SEE SHEET 5