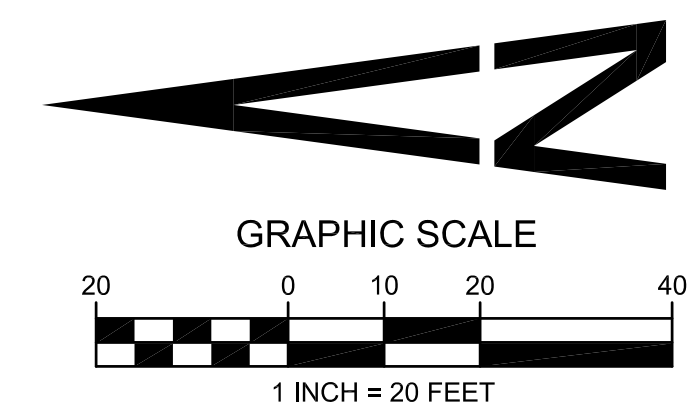
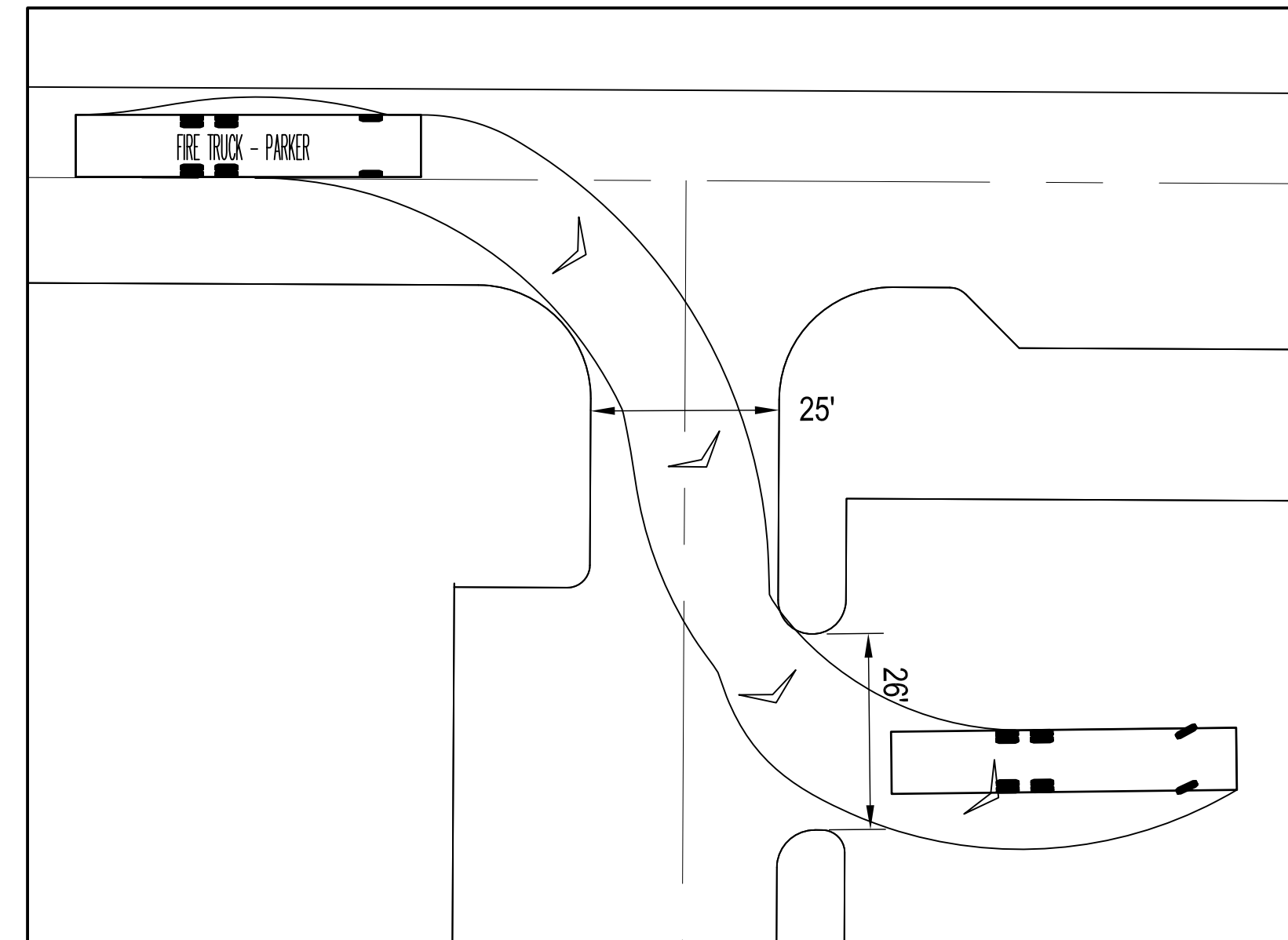
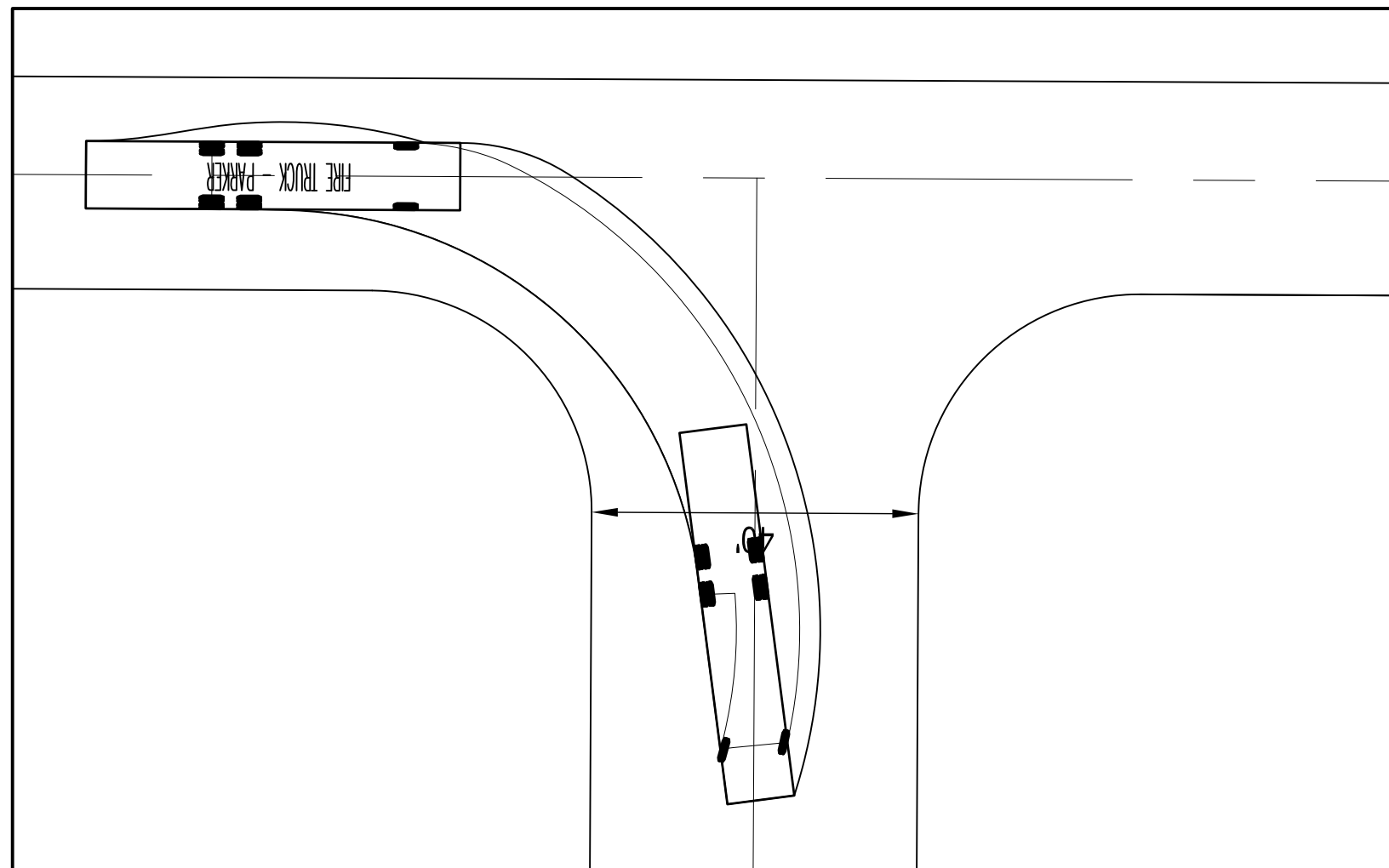
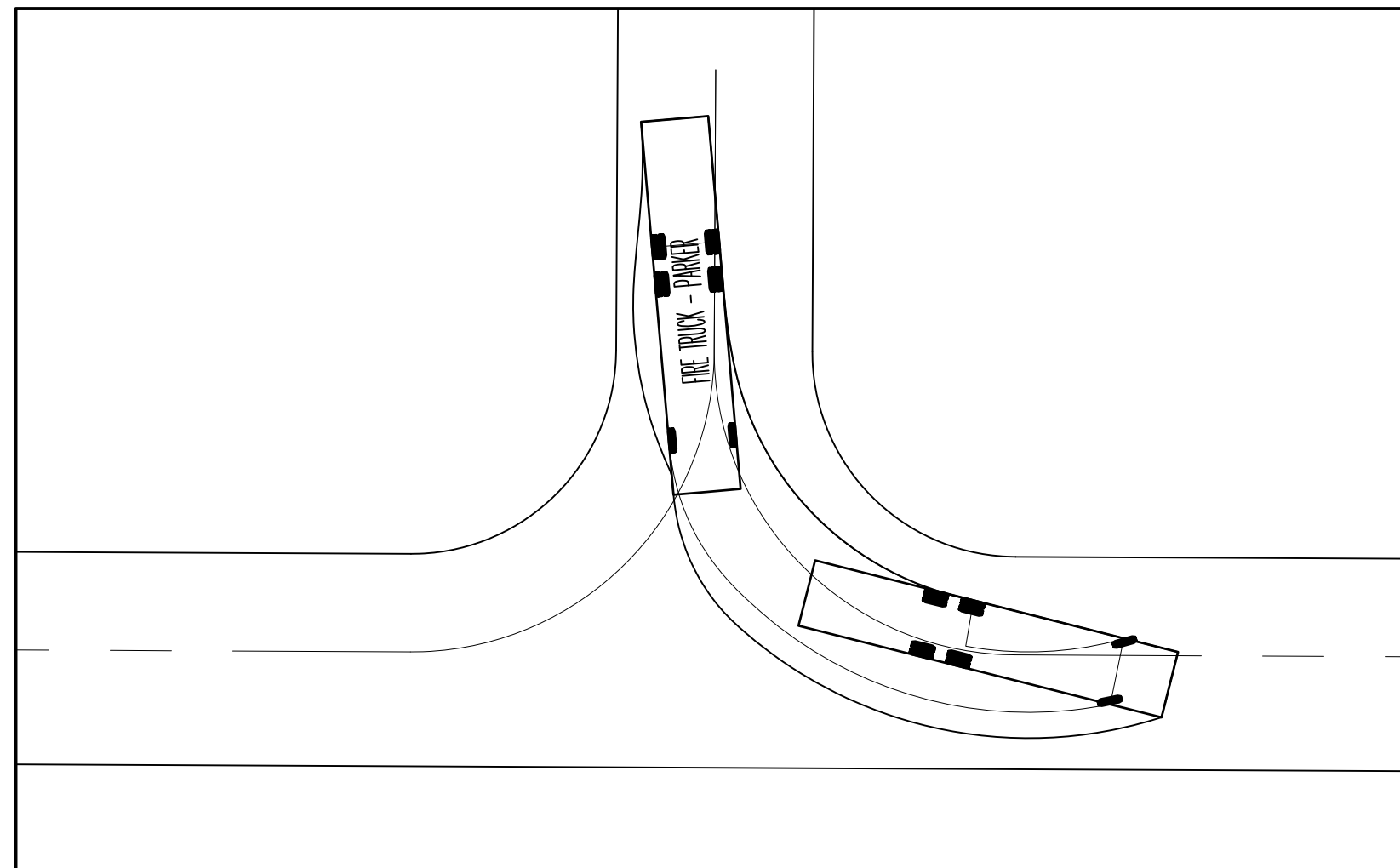
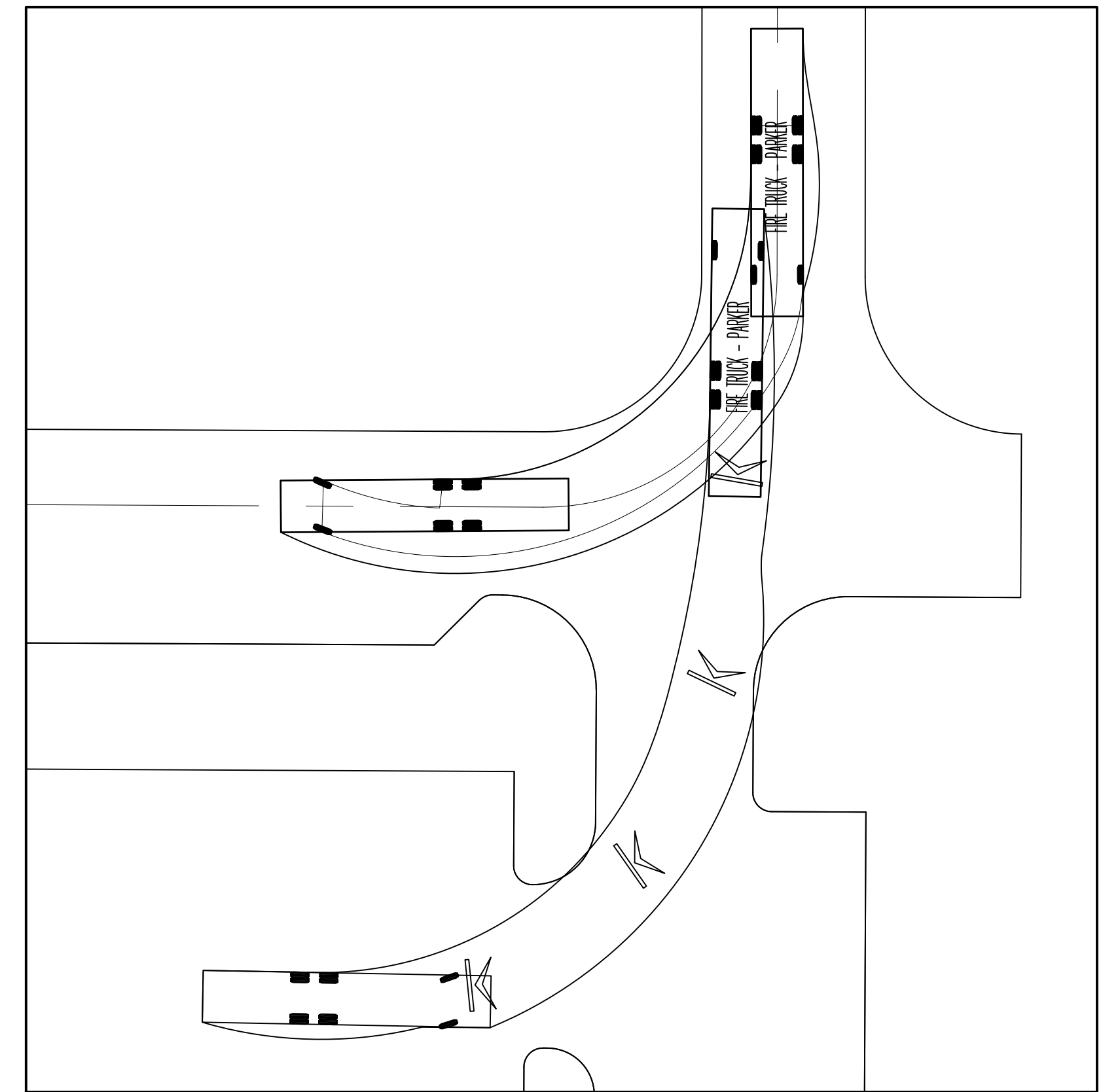
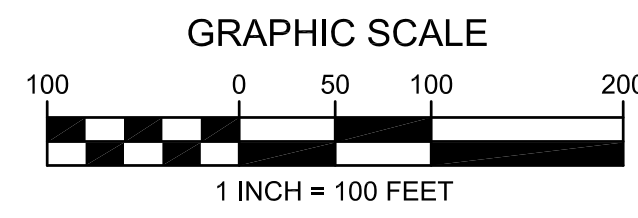
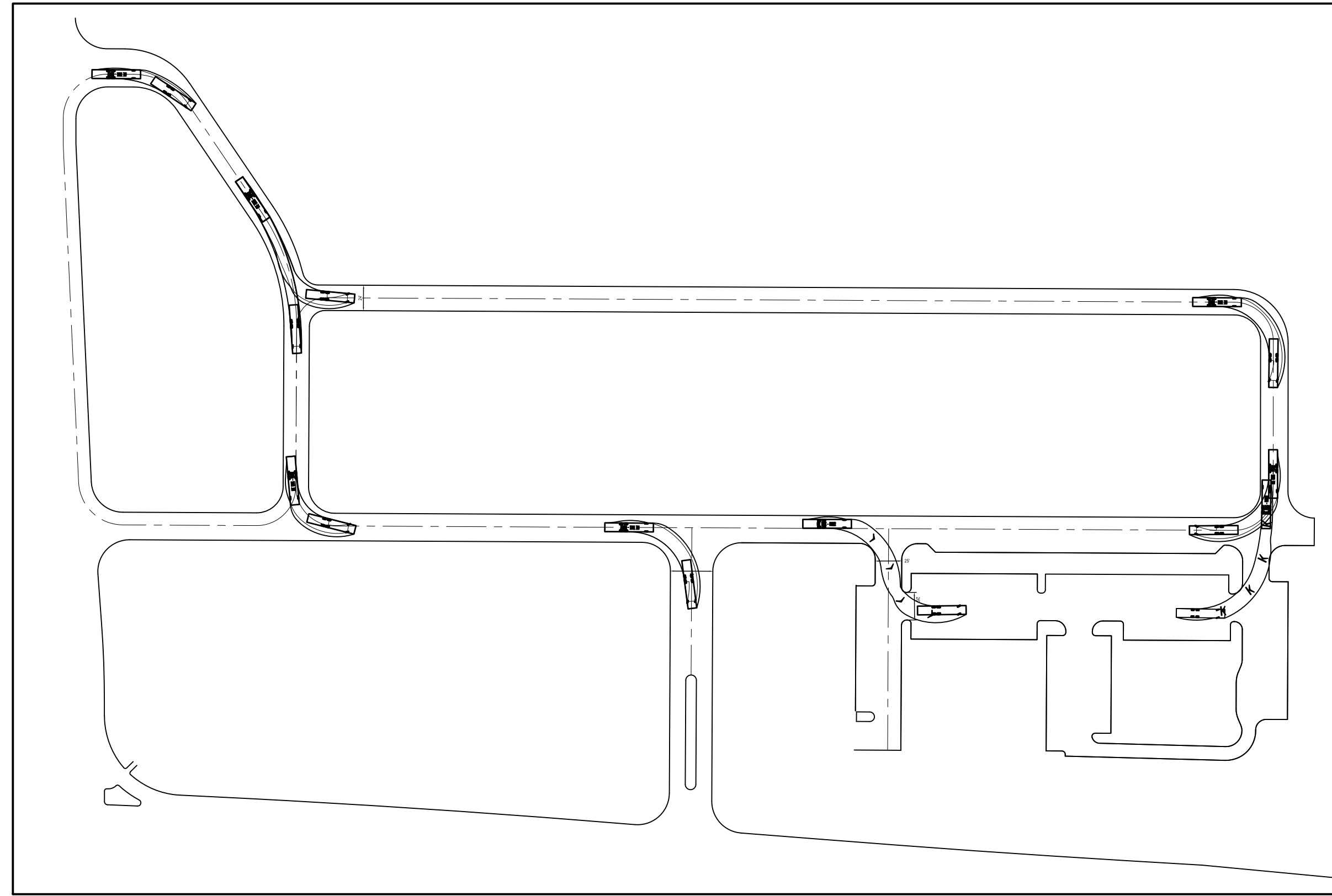
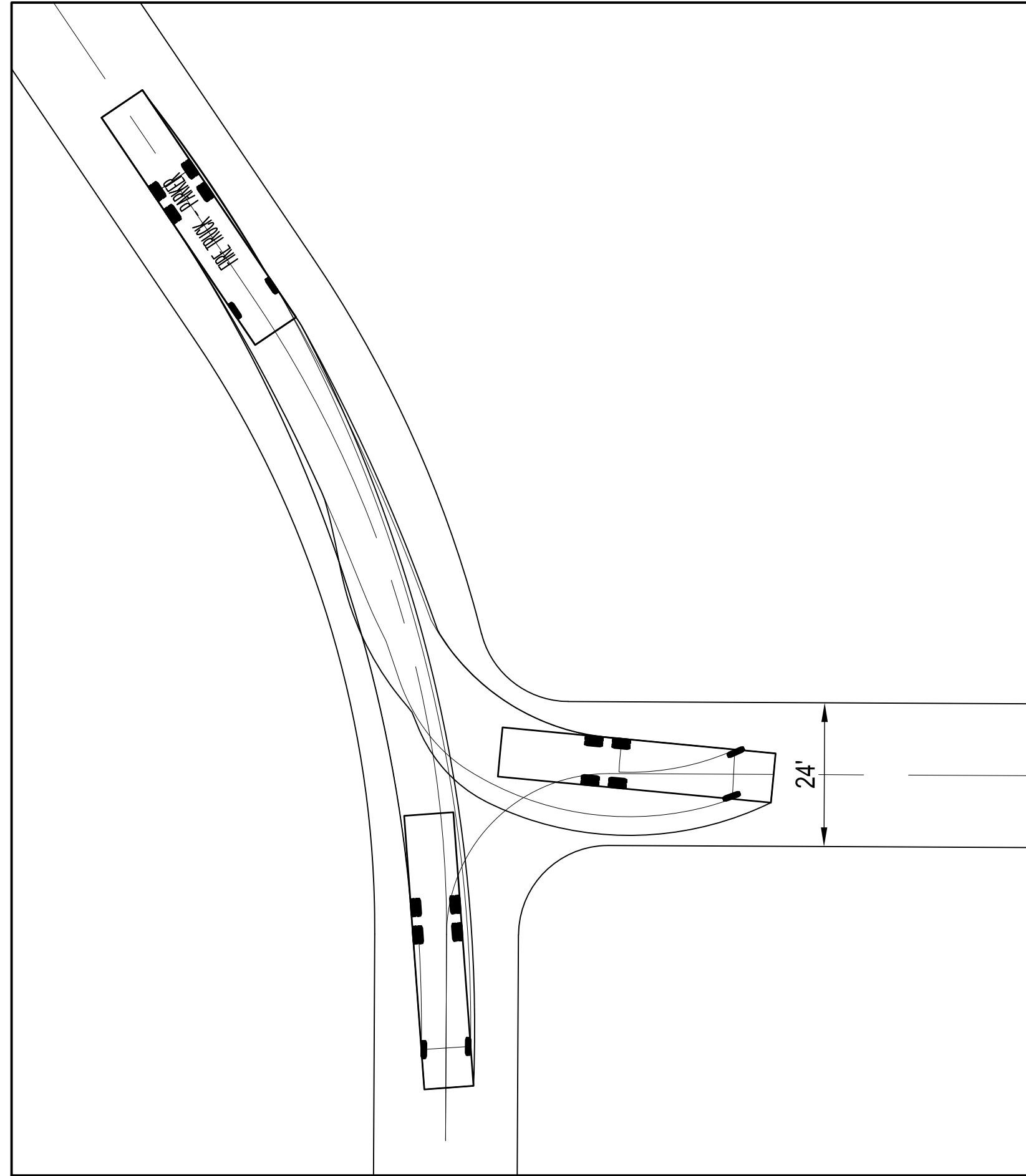
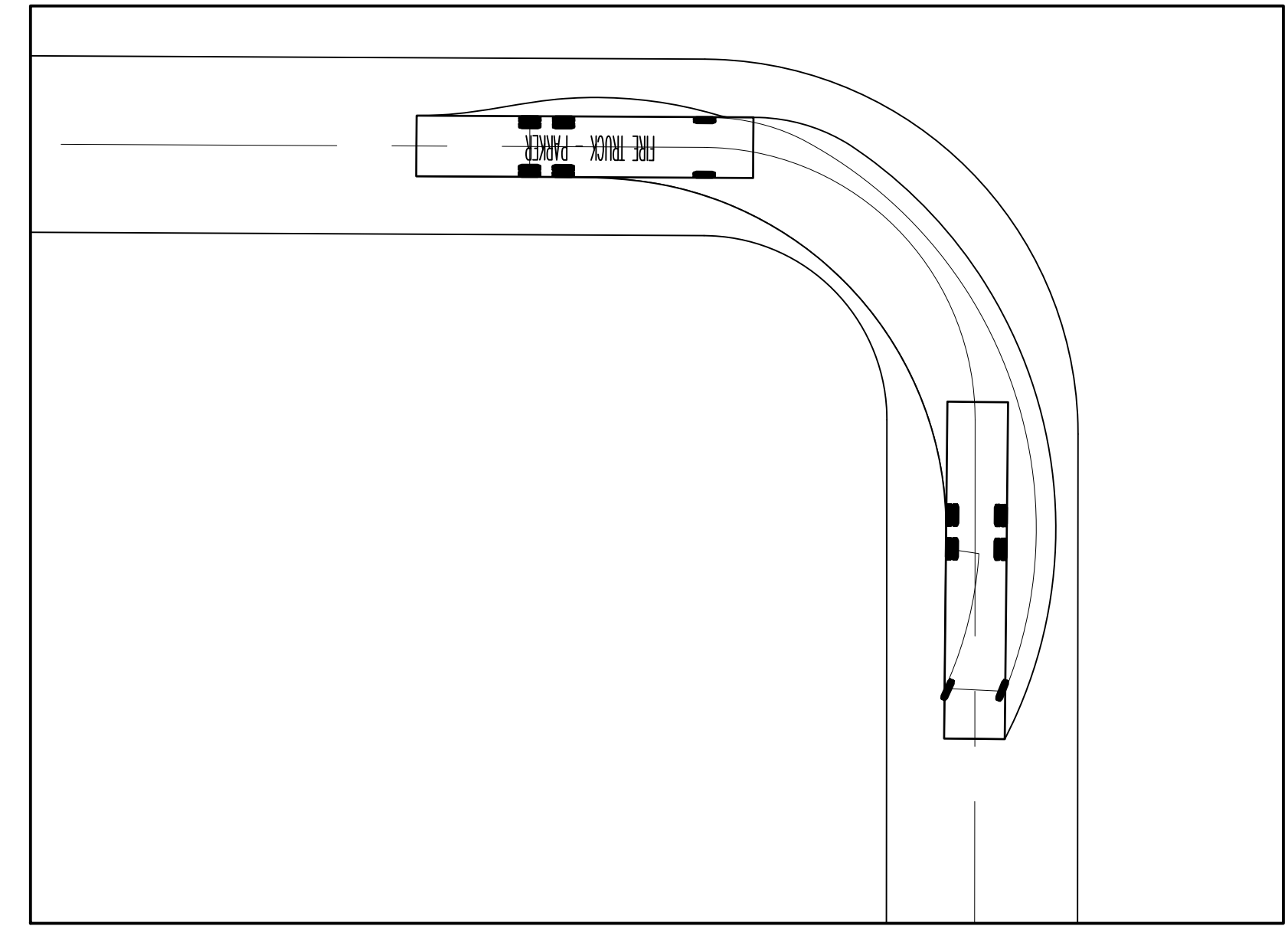
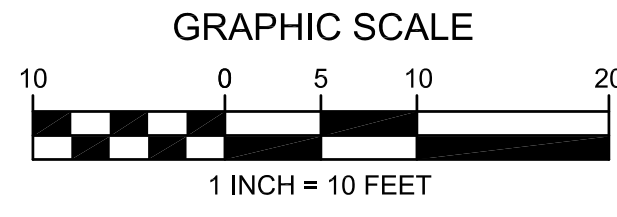
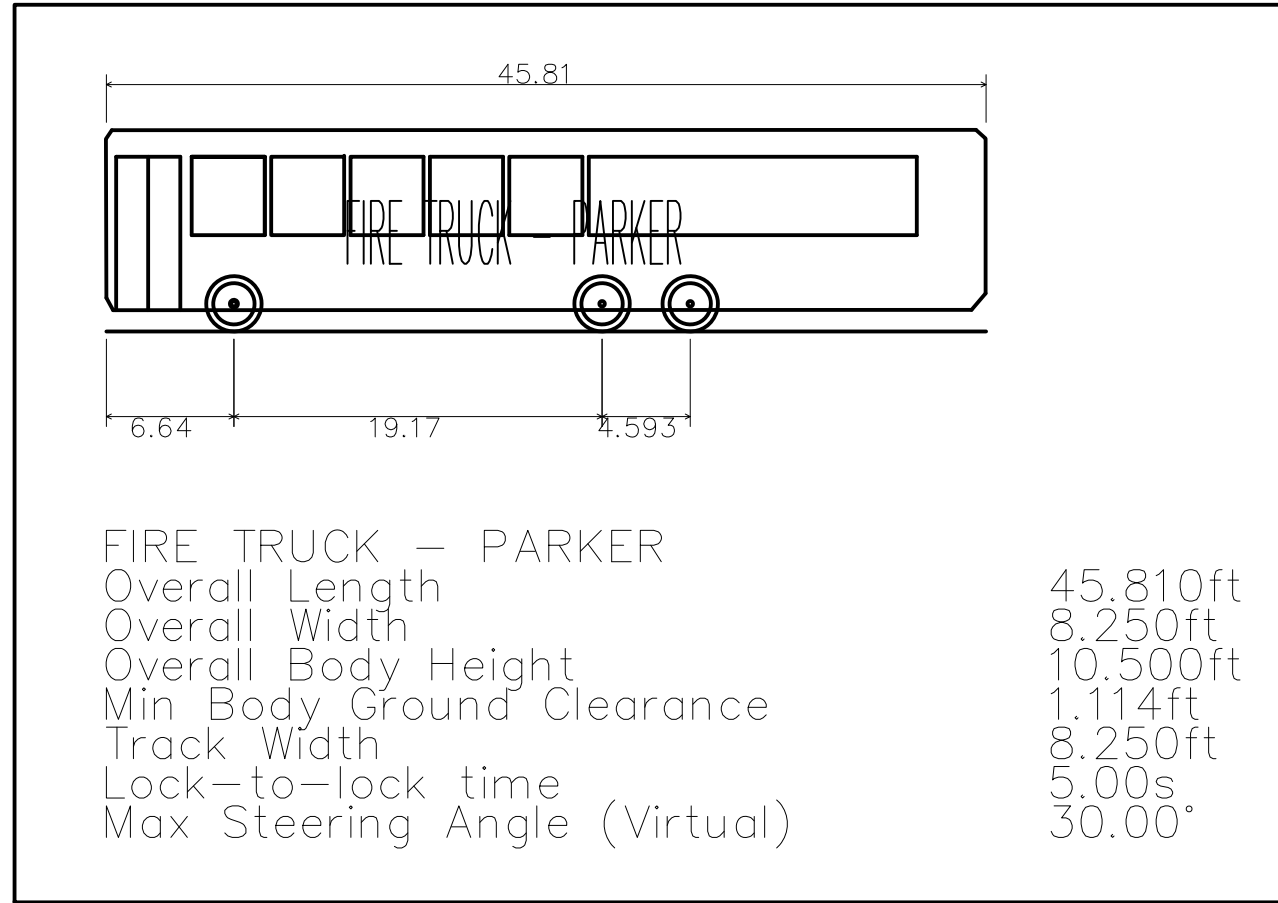
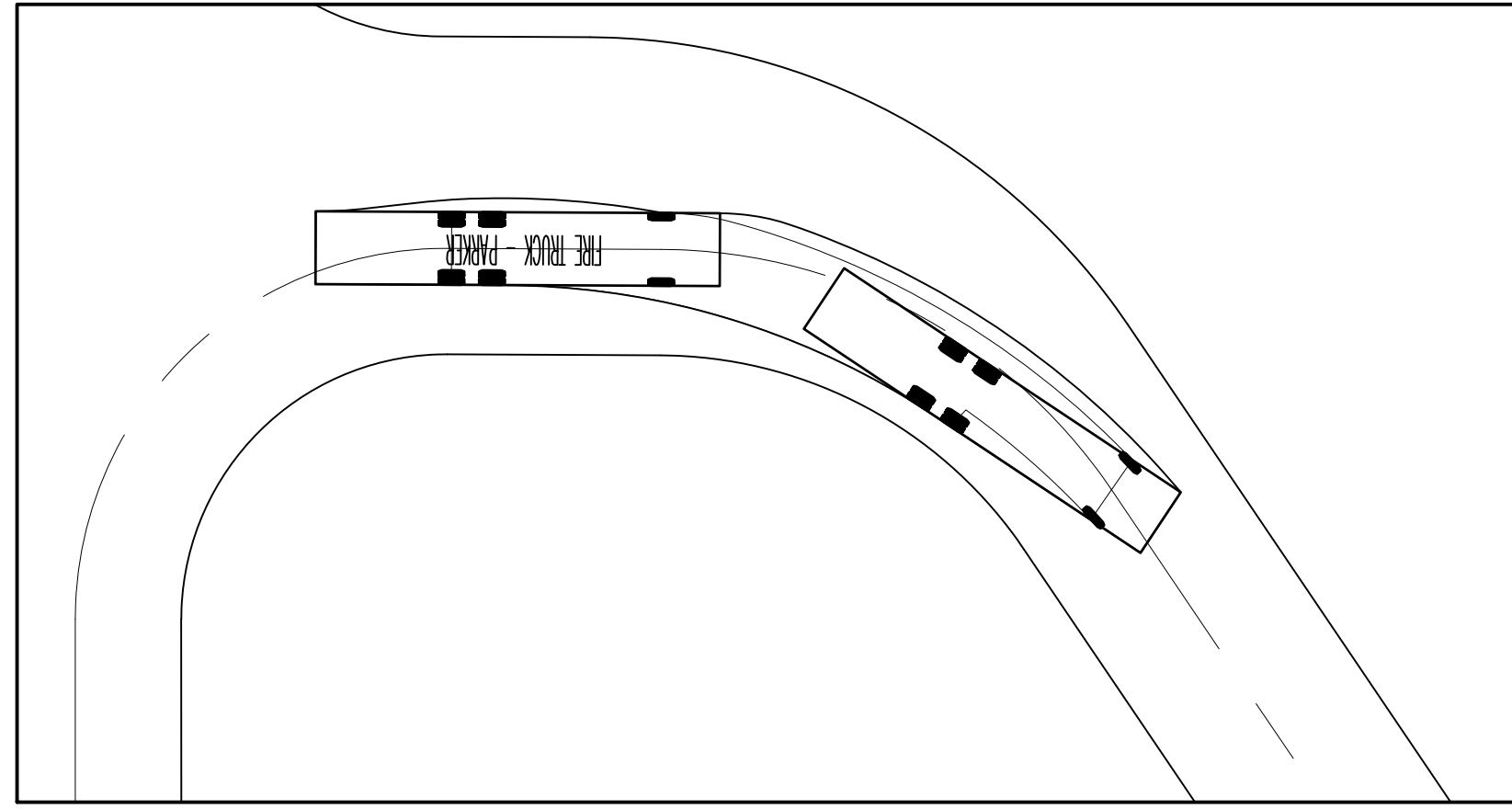


I:\PDG-MAS\PROJECTS\2015-015 PARKER AND STROH\DWG\2015-015 CDS - TRAFFIC VEHICLES TURNING RADD.DWG 6/19/2018 12:00 PM



PREPARED UNDER THE DIRECT SUPERVISION OF JERRY W. DAVIDSON, P.E. COLORADO REG # 30226 FOR AND ON BEHALF OF PERCEPTION DESIGN GROUP, INC.

DATE	DESCRIPTION	REVISIONS
05/25/18	THIRD SUBMITTAL	
03/19/18	PWSD SUBMITTAL	
02/28/18	SECOND SUBMITTAL	
10/24/17	INITIAL SUBMITTAL	

## VEHICLE TURNING EXHIBIT

PARKER POINTE  
 LOTS 1 THRU 15 AND TRACTS A AND B, PARKER POINTE FILING NO. 1  
 SOUTHEAST CORNER PARKER ROAD AND STROH ROAD  
 PARKER, COLORADO

design by: JWD  
 approved by: JWD  
 project no.: 2015-015

date: 10/01/17

SHEET

1 OF 1