

I:\Users\cjh\096502001 - revised - Parker -\CAD\DWG\096502001CV_01.dwg Z:\projects\096502001 - Parker -\DWG\096502001CV_01.dwg DATE: 10/16/2019 10:57 AM
 THIS DOCUMENT, TOGETHER WITH THE CONCEPTS AND DESIGN PRESENTED HEREIN, AS AN INSTRUMENT OF SERVICE, IS INTENDED ONLY FOR THE SPECIFIC PURPOSES AND CLIENT FOR WHICH IT WAS PREPARED. REUSE OF, OR IMPROPER RELIANCE ON, THIS DOCUMENT WITHOUT WRITTEN AUTHORIZATION AND ADAPTATION BY KIMLEY-HORN AND ASSOCIATES, INC. SHALL BE WITHOUT LIABILITY TO KIMLEY-HORN AND ASSOCIATES, INC.

PARKER WATER AND SANITATION GENERAL NOTES

- ALL CONSTRUCTION SHALL COMPLY WITH PARKER WATER AND SANITATION DISTRICT SPECIFICATIONS.
- THE CONTRACTOR SHALL CONTACT ALL APPROPRIATE UTILITY COMPANIES AND THE TOWN OF PARKER PRIOR TO THE BEGINNING OF ANY CONSTRUCTION. CONTRACTOR SHALL BE RESPONSIBLE FOR LOCATING ANY EXISTING UTILITY (INCLUDING DEPTHS) WHICH MAY CONFLICT WITH THE PROPOSED CONSTRUCTION. ALL EXISTING UTILITIES SHALL BE PROTECTED FROM DAMAGE BY THE CONTRACTOR. DAMAGED UTILITIES SHALL BE REPAIRED BY THE CONTRACTOR AT HIS OWN EXPENSE.
- ALL ITEMS SHOWN ON THE PLANS AS EXISTING ARE SHOWN IN APPROXIMATE LOCATIONS ONLY. THE ACTUAL LOCATIONS MAY VARY FROM THE PLANS, ESPECIALLY IN THE CASE OF UNDERGROUND UTILITIES. WHENEVER CONTRACTOR DISCOVERS A DISCREPANCY IN LOCATIONS, HE SHALL CONTACT THE ENGINEER IMMEDIATELY.
- THE DISTRICT ENGINEER AND OTHER APPROVING AGENCIES ARE TO BE NOTIFIED AT LEAST 48 HOURS PRIOR TO CONSTRUCTION.
- THE CONTRACTOR SHALL OBTAIN, AT HIS EXPENSE, ALL PERMITS THAT ARE NECESSARY TO PERFORM THE PROPOSED WORK.
- ALL CONCRETE SHALL BE A MINIMUM OF CLASS A, 6 SACK, TYPE II, 3000-POUND COMPRESSION STRENGTH.
- THE DESIGN ENGINEER SHALL SUBMIT ONE (1) SET OF ROLLED "AS-BUILT" BLUELINE PRINTS AND ELECTRONIC FILES TO THE DISTRICT ENGINEER FOR APPROVAL PRIOR TO PRINTING MYLAR SEPIAS FOR THE DISTRICT. AFTER APPROVAL HAS BEEN GRANTED BY THE DISTRICT ENGINEER, FULL SIZE MYLAR SEPIA PRINTS SHALL BE TRANSMITTED TO THE PARKER WATER AND SANITATION DISTRICT OFFICE.
- ALL BACKFILL MATERIAL SHALL BE COMPACTED TO 95% STANDARD PROCTOR DENSITY. COMPACTION TESTS MUST BE SUBMITTED TO DISTRICT ENGINEER PRIOR TO PROBATIONARY ACCEPTANCE.
- TRENCHES SHALL BE EXCAVATED AND THE PIPE EXPOSED FOR THE INSPECTION AT ANY LOCATION ON THE PROJECT IF SO ORDERED BY THE INSPECTOR.
- THE CONTRACTOR WILL BE HELD RESPONSIBLE FOR THE PROPER FUNCTIONING OF LINES (WATER AND SEWER) FOR UP TO TWO (2) YEARS FROM THE DATE OF PROBATIONARY ACCEPTANCE OF THE LINES BY THE DISTRICT. ANY MALFUNCTION DURING THIS PERIOD OF GUARANTEE SHALL BE REMEDIATED BY THE CONTRACTOR TO THE SATISFACTION OF THE DISTRICT ENGINEER AT NO EXPENSE TO THE DISTRICT.**
- SURFACE GRADES ARE TO BE WITHIN PLUS OR MINUS ONE FOOT OF FINISHED GRADE AND VERIFICATION OF COMPACTION RESULTS OBTAINED PRIOR TO THE INSTALLATION OF WATER AND SEWER LINES. RESULTS MUST BE SUBMITTED TO THE DISTRICT ENGINEER.
- NO WORK SHALL BE BACKFILLED UNTIL THE CONSTRUCTION HAS BEEN INSPECTED AND APPROVED FOR BACKFILLING BY THE DISTRICT ENGINEER OR REPRESENTATIVE OF THE DISTRICT ENGINEER.
- ALL SERVICES WILL BE PERMANENTLY MARKED ON CURB FACE AS FOLLOWS:
 PARKER WATER AND SANITATION DISTRICT P-7
 DISTRICT PLAN APPROVAL PROCEDURES
 2008 REVISION
 "X" FOR SANITARY SERVICE SEWERS
 "V" FOR WATER SERVICES
- NO TREES SHALL BE ALLOWED IN EASEMENTS OR WITHIN 8' OF ANY WATER OR SANITARY SEWER MAINS IN RIGHT OF WAY.
- THE CONTRACTOR SHALL HAVE IN HIS POSSESSION AT ALL TIMES ONE (1) SIGNED COPY OF THE PLANS WHICH HAVE BEEN APPROVED BY THE PARKER WATER AND SANITATION DISTRICT AND THE DISTRICT ENGINEER AND ONE (1) COPY OF THE LATEST PARKER WATER AND SANITATION DISTRICT SPECIFICATION MANUAL.

ADDITIONAL NOTES

- ALL SANITARY SEWER AND STORM SEWER IMPROVEMENTS SHOWN HEREON SHALL BE PRIVATE. ALL WATER MAIN IMPROVEMENTS SHALL BE PUBLIC. REFER TO SPECIFIC PLAN SHEETS FOR MATERIALS AND ADDITIONAL DETAILS.
- TOWN OF PARKER REQUIRES 25' STORM SEWER EASEMENT.
- PARKER WATER AND SANITATION DISTRICT REQUIRES 30' EXCLUSIVE EASEMENT OR 50' NON-EXCLUSIVE EASEMENT.

SANITARY SEWER NOTES

- ALL SANITARY SEWER CONSTRUCTION SHALL CONFORM TO THE PARKER WATER AND SANITATION DISTRICT SPECIFICATION.
- ALL SEWER MAINS SHALL BE PVC, ASTM D-3034, SDR 35 OR APPROVED EQUAL. ALL SEWER MAIN SIZE IS 8" IN DIAMETER UNLESS OTHERWISE NOTED.
- SEWER LINES SHALL BE INSTALLED 5.0 FEET SOUTH OR WEST OF STREET CENTERLINE, UNLESS OTHERWISE SHOWN ON PLANS. SEWER LINES SHALL BE 10.00 FEET FROM WATER LINES EXCEPT WHEN CROSSING EACH OTHER SEWER LINES WHICH CROSS LESS THAN 1.50 FEET VERTICALLY FROM THE WATER MAIN SHALL BE ENCASED IN CONCRETE AS PER PARKER WATER AND SANITATION DISTRICT STANDARD AND SPECIFICATIONS. USE RUBBER GASKETS FOR PVC ENCASEMENT.
- SEWER RIM ELEVATIONS SHOWN ARE APPROPRIATE ONLY AND ARE NOT TO BE TAKEN AS FINAL ELEVATIONS. RING AND COVER SHALL BE SET IN CENTERED CONCRETE RINGS WITH RAM-NECK FOR ADJUSTMENT TO MATCH FINAL PAVEMENT ELEVATIONS.
- THE CONTRACTOR AND SURVEY CREW SHALL VERIFY ELEVATIONS OF EXISTING SEWER LINES AND MANHOLES TO BE TIED TO PRIOR TO CONSTRUCTION OR STAKING OF SANITARY SEWER.
- NO UNDERDRAIN SYSTEM WILL BE ALLOWED TO BE PLACED IN MAINLINE OR SEWER SERVICE TRENCHES.
- SEWER SERVICE TEES FOR EACH UNIT SHALL BE STAKED BY A SURVEY CREW AND FURNISHED AND INSTALLED BY THE CONTRACTOR. THE CONTRACTOR SHALL FURNISH TO THE ENGINEER "AS CONSTRUCTED" LOCATION OF SEWER WYES SHALL BE USED RATHER THAN TEES.
- ALL MANHOLES SHALL BE 48-INCHES IN DIAMETER WITH 24-INCH RING AND COVER, ECCENTRIC CONE UNLESS OTHERWISE SPECIFIED.
- PIPE BEDDING SHALL BE CLASS "B" AND SHALL CONFORM TO ASTM C-33 OR D-448 GRADATION NO. 6 OR NO. 67.
- AT LEAST FIVE (5) DAYS PRIOR TO THE START OF CONSTRUCTION, A PRE-CONSTRUCTION MEETING WILL BE HELD AT THE OFFICE OF THE DISTRICT ENGINEER AND ATTENDED BY THE CONTRACTOR AND REPRESENTATIVES OF THE OTHER APPROVING AGENCIES. IT WILL BE THE RESPONSIBILITY OF THE CONTRACTOR TO CONTACT THE DISTRICT ENGINEER TO SCHEDULE THIS MEETING.
- ALL PIPE LENGTHS ARE APPROXIMATE.
- THE CONTRACTOR SHALL HAVE IN HIS POSSESSION AT ALL TIMES ONE (1) SIGNED COPY OF THE PLANS WHICH HAVE BEEN APPROVED BY THE PARKER WATER AND SANITATION DISTRICT AND THE DISTRICT ENGINEER AND ONE (1) COPY OF THE LATEST PARKER WATER AND SANITATION DISTRICT SPECIFICATION MANUAL.
- ALL MANHOLES SHALL HAVE SHAPED INVERTS. PARKER WATER AND SANITATION DISTRICT P-9
- ALL SEWER LINES SHALL BE TESTED IN ACCORDANCE WITH THE PARKER WATER AND SANITATION DISTRICT STANDARDS AND SPECIFICATIONS PRIOR TO ACCEPTANCE OR ANY CONNECTION TO AN EXISTING SEWER LINE.
- PRIOR TO START WORK WHERE SEWER MAIN TO BE INSTALLED INTO EXISTING DISTRICT SEWER SYSTEMS. THE NEAREST MANHOLE TO THE POINT OF TIE-IN SHALL BE PLUGGED WITH A PLUMBER'S PLUG ON THE INLET SIDE BY THE CONTRACTOR. THIS PLUG SHALL REMAIN IN PLACE UNTIL FINAL ACCEPTANCE BY THE DISTRICT. ITS PURPOSE SHALL BE TO PREVENT ANY MUD, WATER OR OTHER MATERIALS FROM ENTERING THE LINE DURING CONSTRUCTION. THE CONTRACTOR SHALL BE RESPONSIBLE FOR PUMPING AND CLEANING THESE MANHOLES AND REMOVING THE PLUG WHEN SO INSTRUCTED BY THE DISTRICT.
- PRIOR TO PROBATIONARY ACCEPTANCE WALK-THROUGH, THE CLIENT SHALL JET CLEAN THE ENTIRE SANITARY SEWER SYSTEM AND PUMP OUT AT THE PLUGGED MANHOLE.
- DOUBLE CLEANOUTS SHALL BE PROVIDED WITHIN 5 FEET OF EACH BUILDING CONNECTION. REFER TO MEP PLANS FOR CONTINUATION INSIDE BUILDING.
- ALL SANITARY SERVICES TO CONNECT TO MAIN VIA WYE CONNECTION.
- AT ALL POTABLE WATER MAIN AND SANITARY SEWER CROSSINGS WHERE THE PROPOSED SANITARY SEWER LINE LIES ABOVE THE PROPOSED WATER MAIN OR WITHIN 18" BELOW THE WATER MAIN, A CONCRETE ENCASEMENT IS TO BE PROVIDED ALONG THE SANITARY SEWER PIPE FOR 10 FT ON EITHER SIDE OF THE CROSSING. CONCRETE ENCASEMENT TO BE PROVIDED PER THE PWSO SECTION 9.3.2.
- AT ALL STORM SEWER AND SANITARY SEWER CROSSINGS WHERE THE PROPOSED SANITARY SEWER LINE LIES ABOVE THE PROPOSED STORM SEWER OR WITHIN 18" BELOW THE STORM SEWER, A CONCRETE ENCASEMENT IS TO BE PROVIDED ALONG THE SANITARY SEWER PIPE FOR 10 FT ON EITHER SIDE OF THE CROSSING. CONCRETE ENCASEMENT TO BE PROVIDED PER THE PWSO SECTION 9.3.2.
- PROVIDE WATER LOWERING PER PWSO WATER DETAIL #27 WHERE CONFLICTS WITH STORM SEWER AND WATER SERVICES MAY EXIST.

WATER MAIN NOTES

- ALL MATERIALS AND WORKMANSHIP SHALL BE IN CONFORMANCE WITH THE PARKER WATER AND SANITATION DISTRICT ENGINEERING STANDARDS AND SPECIFICATIONS, LATEST REVISIONS. ALL WORK SHALL BE INSPECTED AND APPROVED BY PERSONNEL OF THE PARKER WATER SANITATION DISTRICT AND THE DISTRICT ENGINEER.
- ALL WATER MAINS SHALL BE PER PWSO MATERIALS SPECIFICATIONS.
- ALL BENDS, PLUGS, REDUCERS, AND FIRE HYDRANTS TO BE RODDED OR MEGA-LUGGED. ALL FITTINGS SHALL BE WRAPPED WITH 8-MIL MINIMUM THICKNESS POLYETHYLENE MATERIAL PER PWSO MATERIALS SPECIFICATIONS.
- THERE SHALL BE A MINIMUM COVER OF 4.5 FEET OVER ALL WATER MAINS.
- FIRE HYDRANTS SHALL CONFORM TO AWWA C-502 "DRY BARREL FIRE HYDRANTS". PIPE HYDRANT ASSEMBLIES SHALL INCLUDE ALL PIPE, FITTINGS, VALVES, MATERIALS, AND LABOR WHICH ARE NECESSARY TO INSTALL THE HYDRANT COMPLETE IN PLACE. SEE MATERIALS SPECIFICATIONS FOR APPROVED MODELS.
- ALL BENDS, TEES, FIRE HYDRANTS, BLOW-OFFS AND PLUGS AT DEAD END MAINS SHALL BE PROTECTED FROM THRUST BY USING CONCRETE THRUST BLOCKS.
- PRECAUTIONS SHALL BE TAKEN TO PROTECT THE INTERIOR OF PIPES, FITTINGS, AND VALVES AGAINST CONTAMINATION. ALL OPENINGS IN THE PIPELINE SHALL BE CLOSED WITH WATERTIGHT PLUGS WHEN PIPE LAYING IS STOPPED AT THE CLOSE OF THE DAY'S WORK OR FOR OTHER REASONS, SUCH AS REST BREAKS OR MEAL PERIODS. THE MORE CLOSELY THE RATE OF DELIVERY IS CORRELATED TO THE RATE OF PIPE LAYING, THE LOWER THE RISK OF CONTAMINATION.
- CHLORINATION AND FLUSHING: ALL WATER MAINS SHALL BE INSTALLED AND CHLORINATED PER PARKER WATER AND SANITATION STANDARDS AND SPECIFICATIONS. THE LINES SHALL BE CHLORINATED IN ACCORDANCE WITH ANSI/AWWA C-651-92. "DISINFECTING WATER MAINS." PARKER WATER AND SANITATION DISTRICT REQUIRES THE INITIAL DOSAGE RATE OF DISINFECTION BE AT LEAST 50 MG PER LITER. CHLORINE TABLETS SHOULD BE ADHERED TO THE TOP OF THE PIPE SECTION WITH PERMATAX NO.1 (RED). THE CHLORINATION OF ANY FINISHED PIPELINE SHALL BE DONE PRIOR TO THE HYDROSTATIC TESTING.
- HYDROSTATIC TESTING: ALL WATER MAINS SHALL BE TESTED PER THE REQUIREMENTS OF THE PARKER WATER AND SANITATION DISTRICT STANDARDS AND SPECIFICATIONS. ALL PIPE SHALL BE FIELD PRESSURE TESTED TO A MINIMUM OF 150 PSI. ALL TESTING SHALL BE DONE IN THE PRESENCE OF A PARKER WATER AND SANITATION DISTRICT INSPECTOR. LEAKAGE FOR EACH SECTION OF PIPE BETWEEN LINES VALVES SHALL NOT EXCEED THE LIMITS SET FORTH IN THE PARKER WATER AND SANITATION DISTRICT STANDARDS AND SPECIFICATIONS.
- VALVES IN STREETS ARE TO BE LOCATED AT PROPERTY LINE EXTENSIONS EXCEPT FOR TAPPING TEES WHERE AN ADDITIONAL VALVE SHALL BE PLACED ON THE TAPPING TEE. OTHER VALVE LOCATIONS, SUCH AS WHERE CROSS PANS EXIST, ARE SHOWN ON THE PLANS.
- WHEN NECESSARY TO LOWER OR RAISE WATER LINES AT STORM DRAINS AND OTHER UTILITY CROSSING, A MINIMUM CLEARANCE OF 1.50 FEET SHALL BE MAINTAINED BETWEEN OUTSIDE OF PIPES.
- THE CONTRACTOR SHALL NOTIFY THE PARKER WATER AND SANITATION DISTRICT AND THE DISTRICT ENGINEER AT LEAST 48 HOURS PRIOR TO ANY CONSTRUCTION. IF WORK IS SUSPENDED FOR ANY PERIOD OF TIME AFTER INITIAL START-UP, THE CONTRACTOR MUST NOTIFY THE DISTRICT ENGINEER 48 HOURS PRIOR TO RE-START.
- PIPE BEDDING SHALL BE A CLEAN, WELL-GRADED SAND OR SQUEEGEE SAND IN ACCORDANCE WITH PARKER WATER AND SANITATION DISTRICT STANDARDS AND SPECIFICATIONS, LATEST REVISION.
- THE CONTRACTOR SHALL NOTIFY THE PUBLIC UTILITY COMPANIES AND DETERMINE THE LOCATION OF ALL EXISTING UNDERGROUND UTILITIES PRIOR TO PROCEEDING WITH THE EXCAVATION. ALL WORK PERFORMED IN THE AREA OF THE PUBLIC UTILITIES SHALL BE PERFORMED ACCORDING TO THE REQUIREMENTS OF THESE AGENCIES.
- COMPACTION OF ALL TRENCHES MUST BE ATTAINED IN ACCORDANCE WITH THE SOILS REPORTS AND COMPACTION TEST RESULTS SUBMITTED TO THE DISTRICT ENGINEER PRIOR TO PROBATIONARY ACCEPTANCE.
- VALVE BOXES: TYLER SCREW-TYPE 6 INCHES CAST IRON VALVE BOX ASSEMBLY SERIES 6860 WITH NO. 160 OVAL BASE. CLAY AND BAILEY SCREW-TYPE 6 INCH CAST IRON VALVE BOX ASSEMBLY NO. P-108 WITH NO. 106 LARGE OVAL BASE.
- ALL PIPE LENGTHS ARE APPROXIMATE.
- AT LEAST FIVE (5) DAYS PRIOR TO THE START OF CONSTRUCTION, A PRE-CONSTRUCTION MEETING WILL BE HELD AT THE OFFICE OF THE DISTRICT ENGINEER AND ATTENDED BY THE CONTRACTOR AND REPRESENTATIVE OF OTHER APPROVING AGENCIES. IT WILL BE THE RESPONSIBILITY OF THE CONTRACTOR TO CONTACT THE DISTRICT ENGINEER.

NO.	REVISION	BY	DATE

Kimley»Horn
 2019 KIMLEY-HORN AND ASSOCIATES, INC.
 4582 South Ulster Street, Suite 1500
 Denver, Colorado 80237 (303) 228-2300

DESIGNED BY: DLS
 DRAWN BY: ECZ
 CHECKED BY: DLS
 DATE: 11/14/19

PARKER & PINE
 PARKER, CO
 CONSTRUCTION DOCUMENTS
WATER AND SANITARY SEWER NOTES

PRELIMINARY
 FOR REVIEW ONLY
 NOT FOR
 CONSTRUCTION
Kimley»Horn
 Kimley-Horn and Associates, Inc.

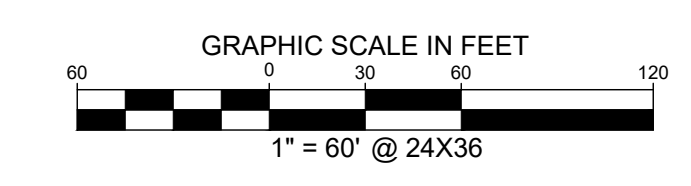
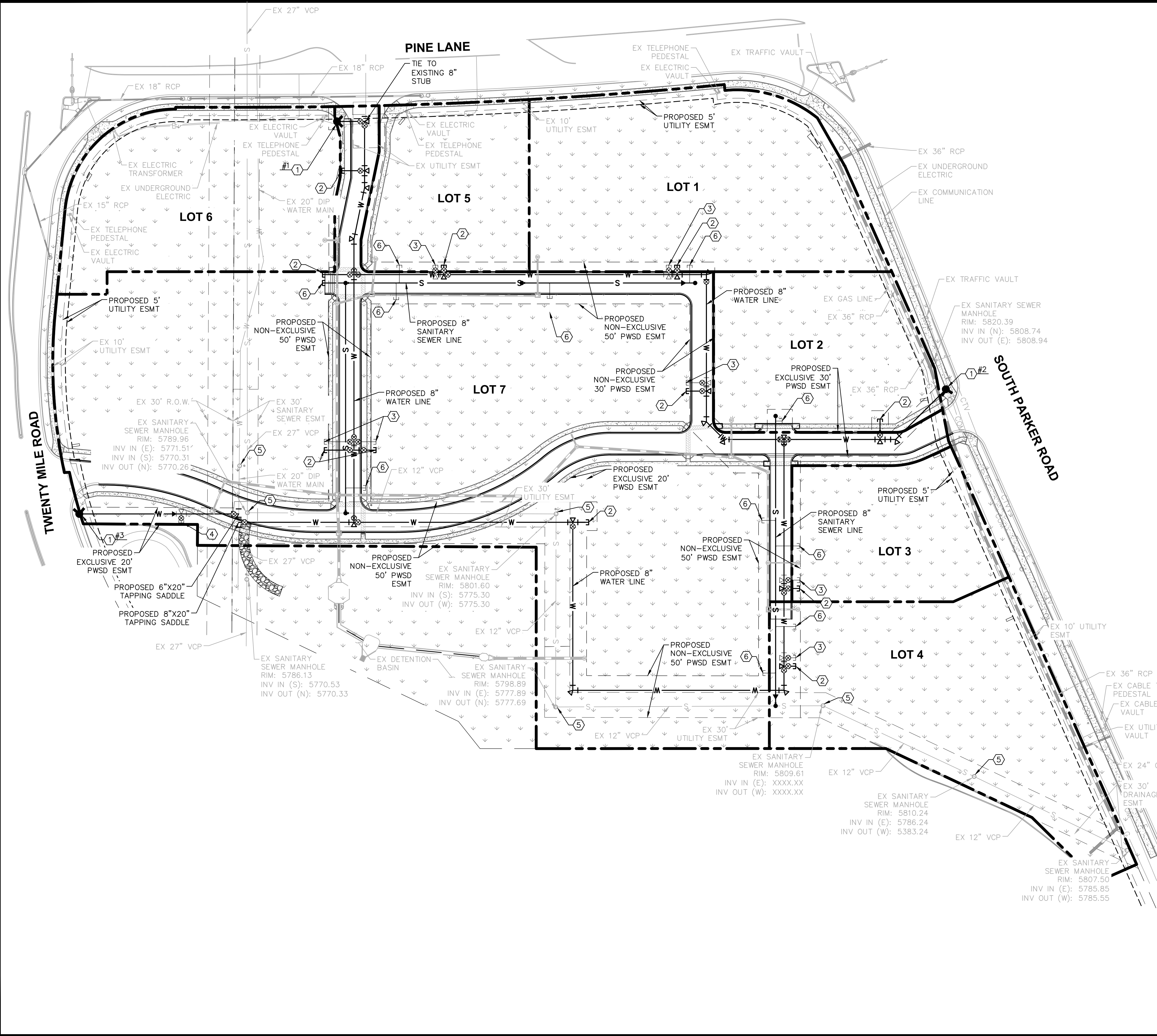
PROJECT NO.
 096502001

DRAWING NAME
 096502001CV_01

C7.1



I:\Projects\109560901 - mixed use parking -\CAD\DWG\109560901.dwg - 10/19/2018 10:47 AM
 THIS DOCUMENT, TOGETHER WITH THE CONCEPTS AND DESIGN PRESENTED HEREIN, AS AN INSTRUMENT OF SERVICE IS INTENDED ONLY FOR THE SPECIFIC PROJECT AND CLIENT FOR WHICH IT WAS PREPARED. REVIEW OF AND UNAUTHORIZED REUSE OF AND IMPROPER RELIANCE ON THIS DOCUMENT WITHOUT WRITTEN AUTHORIZATION AND ADAPTATION BY KIMLEY-HORN AND ASSOCIATES, INC. SHALL BE WITHOUT LIABILITY TO KIMLEY-HORN AND ASSOCIATES, INC.



UTILITY LEGEND

	EXISTING PROPERTY LINE
	EXISTING EASEMENT
	PROPOSED EASEMENT
	PROPOSED SANITARY SEWER LINE
	PROPOSED WATER LINE
	PROPOSED STORM DRAINAGE LINE
	EXISTING STORM DRAINAGE LINE
	EXISTING GAS LINE
	EXISTING WATER LINE
	EXISTING SANITARY SEWER LINE
	PROPOSED FIRE HYDRANT W/ BOLLARDS
	PROPOSED WATER VALVE
	PROPOSED TEE / BEND
	EXISTING SANITARY SEWER MANHOLE
	PROPOSED SANITARY SEWER MANHOLE W/ FLOW ARROWS

- SITE KEYNOTES**
- ① PROPOSED FH W/ 6" GATE VALVE
 - ② PROPOSED 8" WATER STUB W/ TEMP BLOW-OFF
 - ③ PROPOSED 6" WATER STUB W/ TEMP BLOW-OFF
 - ④ PROPOSED 1 1/2" IRRIGATION STUB
 - ⑤ ADJUST EXISTING STRUCTURE TO PROPOSED GRADE
 - ⑥ PROPOSED 6" SANITARY SEWER STUB W/ CLEANOUT

ALL FIRE HYDRANTS SHALL BE INSTALLED ACCORDING TO WATER UTILITY STANDARDS. THE NUMBER AND LOCATIONS OF THE FIRE HYDRANTS AS SHOWN ON THE OVERALL UTILITY PLAN ARE CORRECT AS SPECIFIED BY THE TOWN OF PARKER, COMMUNITY DEVELOPMENT DEPARTMENT.

FIRE CODE OFFICIAL OR DESIGNATED REPRESENTATIVE _____ DATE _____
 (NOTE - UNDERGROUND FIRE LINE (UFL) SUBMITTAL DOCUMENTS MUST MEET THE REQUIREMENTS OF NFPA 24 WHEN SUBMITTING FOR REVIEW.)

THE TOWN OF PARKER REVIEW CONSTITUTES GENERAL COMPLIANCE WITH THE TOWN'S STANDARDS AND APPROVED VARIANCES, SUBJECT TO THESE PLANS BEING STAMPED, SIGNED, AND DATED BY THE PROFESSIONAL ENGINEER OF RECORD. REVIEW BY THE TOWN DOES NOT CONSTITUTE APPROVAL OF THE PLAN DESIGN OR ACCURACY AND CORRECTNESS OF ENGINEERING CALCULATIONS. ERRORS IN THE DESIGN OR CALCULATIONS REMAIN THE RESPONSIBILITY OF REGISTERED PROFESSIONAL ENGINEER WHOSE STAMP AND SIGNATURE ARE AFFIXED TO THIS DOCUMENT.

THIS REVIEW DOES NOT CONSTITUTE APPROVAL OF ANY PRIVATE ON-SITE IMPROVEMENTS WHICH MAY BE SHOWN. CONSTRUCTION CANNOT COMMENCE UNTIL ALL REQUIRED DRAINAGE/TRAFFIC REPORT(S), FINAL DEVELOPMENT PLAN(S), SPECIAL REVIEW(S), GRADING PERMIT, AND/OR OTHER PERMITS ARE COMPLETE, APPROVED AND ON FILE WITH THE TOWN OF PARKER.

TOWN OF PARKER, DIRECTOR OF ENGINEERING _____ DATE _____

NO.	REVISION	BY	DATE

Kimley»Horn
 2019 KIMLEY-HORN AND ASSOCIATES, INC.
 4582 South Ulster Street, Suite 1500
 Denver, Colorado 80237 (303) 228-2300

DESIGNED BY: DLS
 DRAWN BY: ECZ
 CHECKED BY: DLS
 DATE: 11/14/19

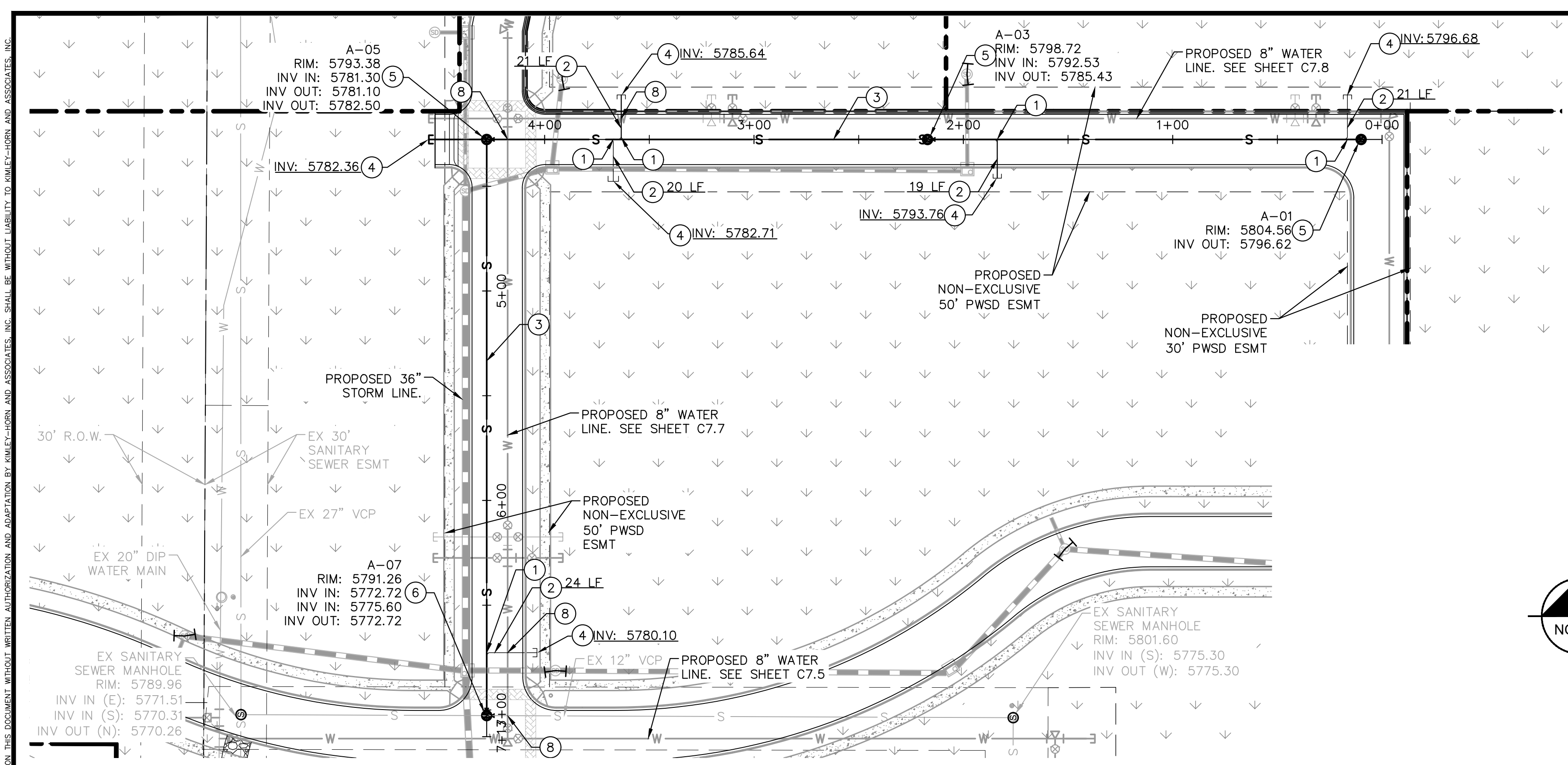
**PARKER & PINE
 PARKER, CO
 CONSTRUCTION DOCUMENTS
 OVERALL UTILITY PLAN**

PRELIMINARY
 FOR REVIEW ONLY
 NOT FOR
 CONSTRUCTION
Kimley»Horn
 Kimley-Horn and Associates, Inc.

PROJECT NO.
096502001
 DRAWING NAME
096502001UT
C7.2

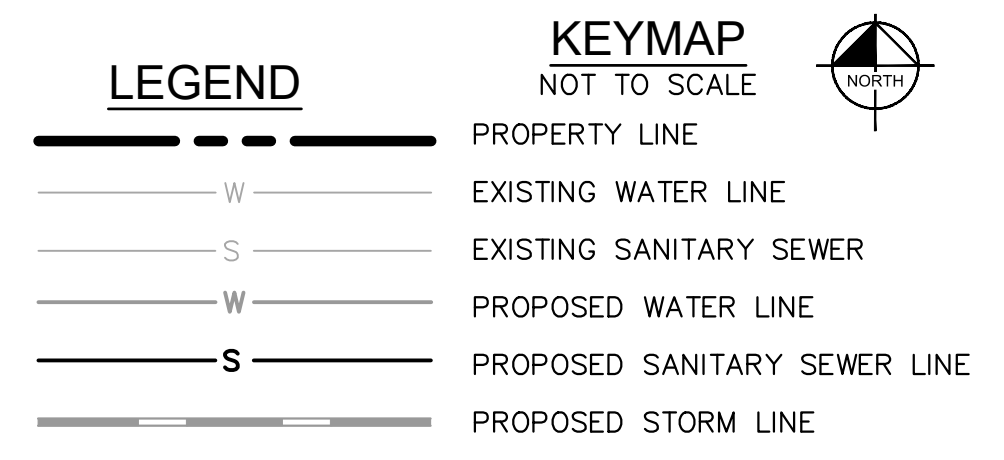
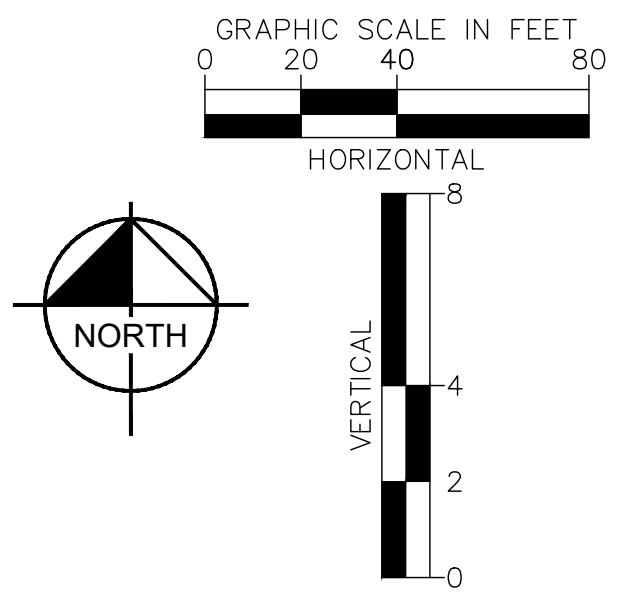
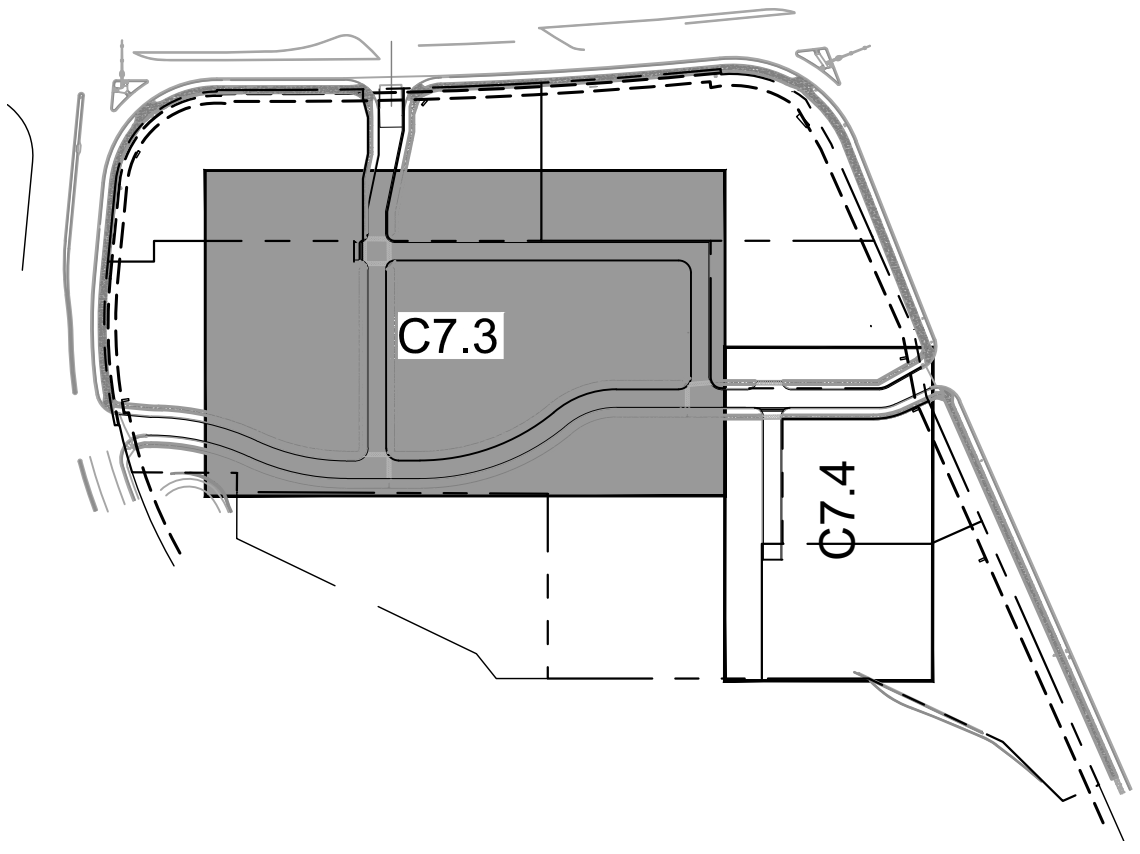


I:\Projects\109650000\109650000.dwg - revised per A/CADD\10/19/2010 10:57 AM. This document is for informational purposes only. It is not to be used for construction. It was prepared, revised or adapted by KIMLEY-HORN AND ASSOCIATES, INC. THE USER SHALL BE WITHOUT LIABILITY TO KIMLEY-HORN AND ASSOCIATES, INC.



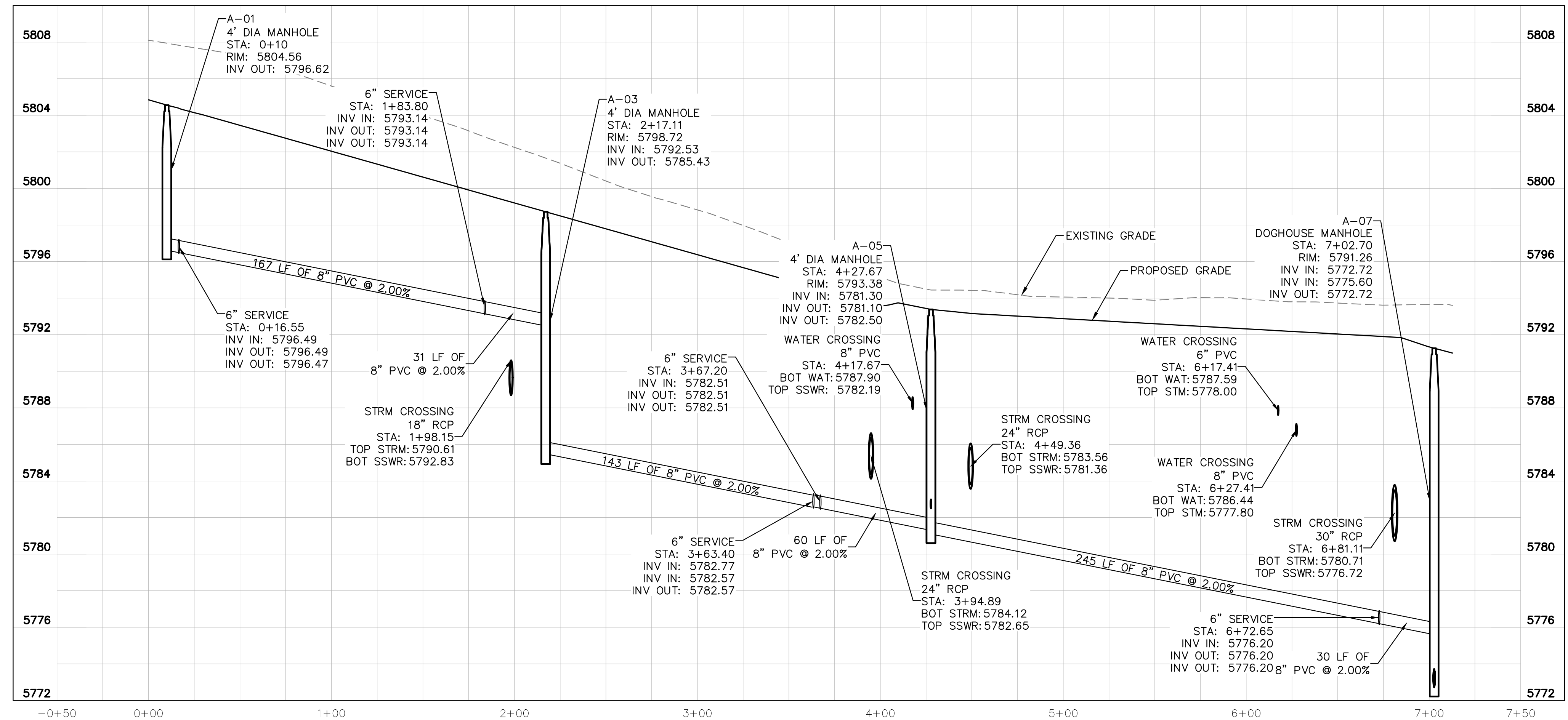
KEY NOTES

- ① WYE CONNECTION INTO PROPOSED 8" PVC SANITARY SEWER MAIN
- ② 6" SDR 35 PVC SANITARY SEWER LINE LATERAL, LENGTH PER PLAN, SLOPE 1% MINIMUM
- ③ 8" SDR 35 PVC PUBLIC SANITARY SEWER LINE, LENGTH AND SLOPE PER PROFILE.
- ④ PROPOSED CLEANOUT. SEE DETAILS.
- ⑤ PROPOSED SANITARY SEWER MANHOLE. SEE DETAILS.
- ⑥ PROPOSED DOGHOUSE MANHOLE. SEE DETAILS.
- ⑦ NOT USED
- ⑧ PROPOSED WATER/SEWER CROSSING TO MAINTAIN 18" VERTICAL SEPARATION



SANITARY SEWER NOTES

1. ALL SANITARY SEWER CONSTRUCTION SHALL CONFORM TO THE PARKER WATER AND SANITATION DISTRICT SPECIFICATION.
2. ALL SEWER MAINS SHALL BE PVC, ASTM D-3034, SDR 35 OR APPROVED EQUAL. ALL SEWER MAIN SIZE IS 8" IN DIAMETER UNLESS OTHERWISE NOTED.
3. SEWER RIM ELEVATIONS SHOWN ARE APPROXIMATE ONLY AND ARE NOT TO BE TAKEN AS FINAL ELEVATIONS. RING AND COVER SHALL BE SET IN CENTERED CONCRETE RINGS WITH RAM-NECK FOR ADJUSTMENT TO MATCH FINAL PAVEMENT ELEVATIONS.
4. THE CONTRACTOR AND SURVEY CREW SHALL VERIFY ELEVATIONS OF EXISTING SEWER LINES AND MANHOLES TO BE TIED TO PRIOR TO CONSTRUCTION OR STAKING OF SANITARY SEWER.
5. NO UNDERDRAIN SYSTEM WILL BE ALLOWED TO BE PLACED IN MAINLINE OR SEWER SERVICE TRENCHES.
6. SEWER SERVICE TEES FOR EACH UNIT SHALL BE STAKED BY A SURVEY CREW AND FURNISHED AND INSTALLED BY THE CONTRACTOR. THE CONTRACTOR SHALL FURNISH TO THE ENGINEER "AS CONSTRUCTED" LOCATION OF TEES. SEWER WYES SHALL BE USED RATHER THAN TEES.
7. ALL MANHOLES SHALL BE 48-INCHES IN DIAMETER WITH 24-INCH RING AND COVER, ECCENTRIC CONE UNLESS OTHERWISE SPECIFIED.
8. PIPE BEDDING SHALL BE CLASS "B" AND SHALL CONFORM TO ASTM C-33 OR D-448 GRADATION NO. 6 OR NO. 67.
9. AT LEAST FIVE (5) DAYS PRIOR TO THE START OF CONSTRUCTION, A PRE-CONSTRUCTION MEETING WILL BE HELD AT THE OFFICE OF THE DISTRICT ENGINEER AND ATTENDED BY THE CONTRACTOR AND REPRESENTATIVES OF THE OTHER APPROVING AGENCIES. IT WILL BE THE RESPONSIBILITY OF THE CONTRACTOR TO CONTACT THE DISTRICT ENGINEER TO SCHEDULE THIS MEETING.
10. ALL PIPE LENGTHS ARE APPROXIMATE.
11. THE CONTRACTOR SHALL HAVE IN HIS POSSESSION AT ALL TIMES ONE (1) SIGNED COPY OF THE PLANS WHICH HAVE BEEN APPROVED BY THE PARKER WATER AND SANITATION DISTRICT AND THE DISTRICT ENGINEER AND ONE (1) COPY OF THE LATEST PARKER WATER AND SANITATION DISTRICT SPECIFICATION MANUAL.
12. ALL MANHOLES SHALL HAVE SHAPED INVERTS.
13. ALL SEWER LINES SHALL BE TESTED IN ACCORDANCE WITH THE PARKER WATER AND SANITATION DISTRICT STANDARDS AND SPECIFICATIONS PRIOR TO ACCEPTANCE OR ANY CONNECTION TO AN EXISTING SEWER LINE.
14. PRIOR TO START WORK WHERE SEWER MAIN TO BE INSTALLED INTO EXISTING DISTRICT SEWER SYSTEMS, THE NEAREST MANHOLE TO THE POINT OF TIE-IN SHALL BE PLUGGED WITH A PLUMBER'S PLUG ON THE INLET SIDE BY THE CONTRACTOR. THIS PLUG SHALL REMAIN IN PLACE UNTIL FINAL ACCEPTANCE BY THE DISTRICT. ITS PURPOSE SHALL BE TO PREVENT ANY MUD, WATER OR OTHER MATERIALS FROM ENTERING THE LINE DURING CONSTRUCTION. THE CONTRACTOR SHALL BE RESPONSIBLE FOR PUMPING AND CLEANING THESE MANHOLES AND REMOVING THE PLUG WHEN SO INSTRUCTED BY THE DISTRICT.
15. PRIOR TO PROBATIONARY ACCEPTANCE WALK-THROUGH, THE CLIENT SHALL JET CLEAN THE ENTIRE SANITARY SEWER SYSTEM AND PUMP OUT AT THE PLUGGED MANHOLE.
16. DOUBLE CLEANOUTS SHALL BE PROVIDED WITHIN 5 FEET OF EACH BUILDING CONNECTION. REFER TO MEP PLANS FOR CONTINUATION INSIDE BUILDING.
17. ALL SANITARY SERVICES TO CONNECT TO MAIN VIA WYE CONNECTION.
18. AT ALL POTABLE WATER MAIN AND SANITARY SEWER CROSSINGS WHERE THE PROPOSED SANITARY SEWER LINE LIES ABOVE THE PROPOSED WATER MAIN OR WITHIN 18" BELOW THE WATER MAIN, A CONCRETE ENCASEMENT IS TO BE PROVIDED ALONG THE SANITARY SEWER PIPE FOR 10 FT ON EITHER SIDE OF THE CROSSING. CONCRETE ENCASEMENT TO BE PROVIDED PER THE PWSW SECTION 9.3.2.
19. AT ALL STORM SEWER AND SANITARY SEWER CROSSINGS WHERE THE PROPOSED SANITARY SEWER LINE LIES ABOVE THE PROPOSED STORM SEWER OR WITHIN 18" BELOW THE STORM SEWER, A CONCRETE ENCASEMENT IS TO BE PROVIDED ALONG THE SANITARY SEWER PIPE FOR 10 FT ON EITHER SIDE OF THE CROSSING. CONCRETE ENCASEMENT TO BE PROVIDED PER THE PWSW SECTION 9.3.2.
20. PROVIDE WATER LOWERING PER PWSW WATER DETAIL #27 WHERE CONFLICTS WITH STORM SEWER AND WATER SERVICES MAY EXIST.



SANITARY SEWER MAIN PROFILE A
 STRUCTURE SSWR-A-01 TO SSWR-A-07
 HORIZONTAL SCALE: 1"=40'
 VERTICAL SCALE: 1"=8'

CAUTION
 CONTRACTOR IS TO VERIFY PRESENCE AND EXACT UTILITIES PRIOR TO CONSTRUCTION.



NO.	REVISION	BY	DATE

Kimley-Horn
 2019 KIMLEY-HORN AND ASSOCIATES, INC.
 4582 South Ulster Street, Suite 1500
 Denver, Colorado 80237 (303) 228-2300

DESIGNED BY: DLS
 DRAWN BY: ECZ
 CHECKED BY: DLS
 DATE: 11/14/19

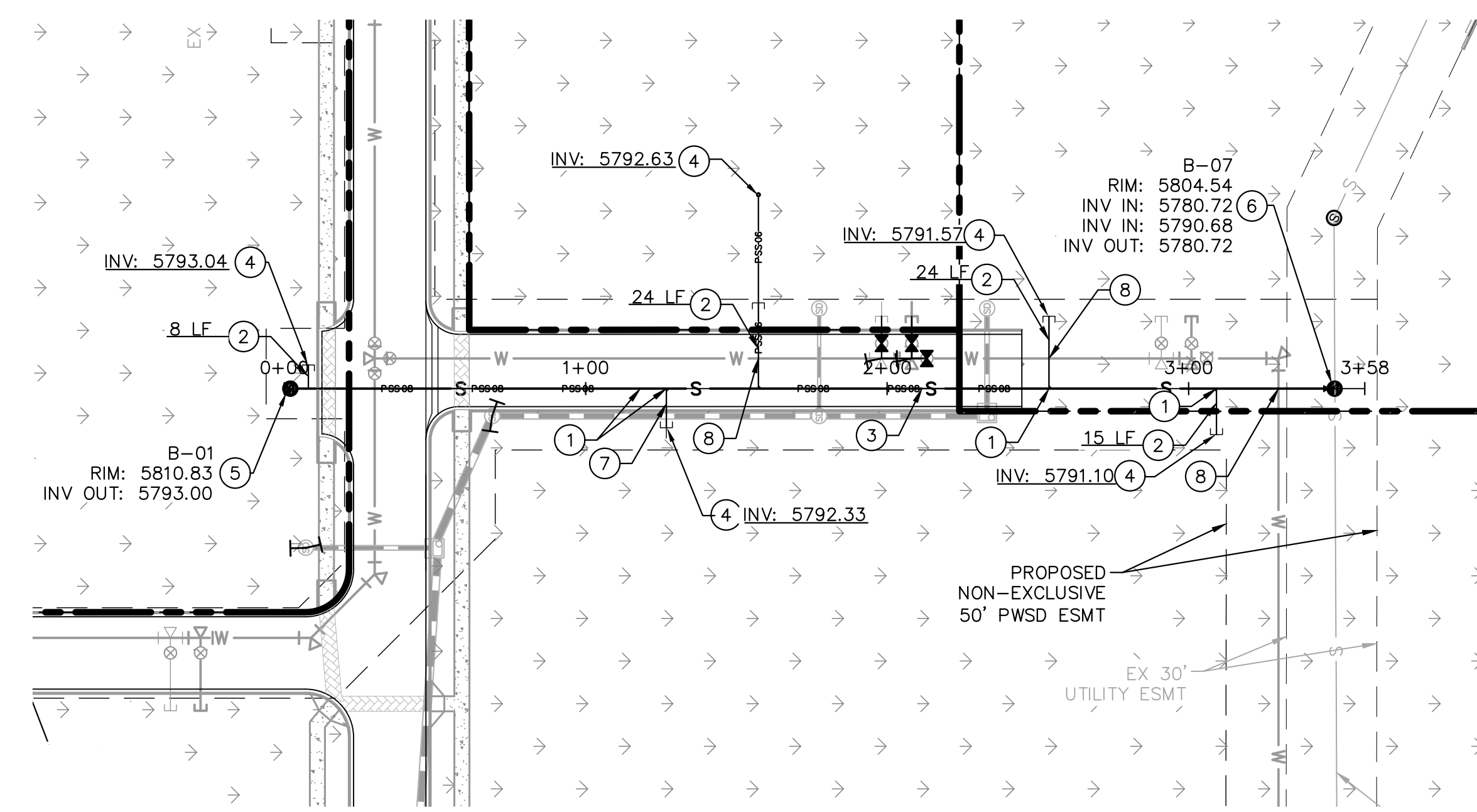
PARKER & PINE
 PARKER, CO
 CONSTRUCTION DOCUMENTS
SANITARY SEWER PLAN AND PROFILE

PRELIMINARY
 FOR REVIEW ONLY
 NOT FOR CONSTRUCTION
Kimley-Horn
 Kimley-Horn and Associates, Inc.

PROJECT NO.
 096502001
 DRAWING NAME
 096502001SS

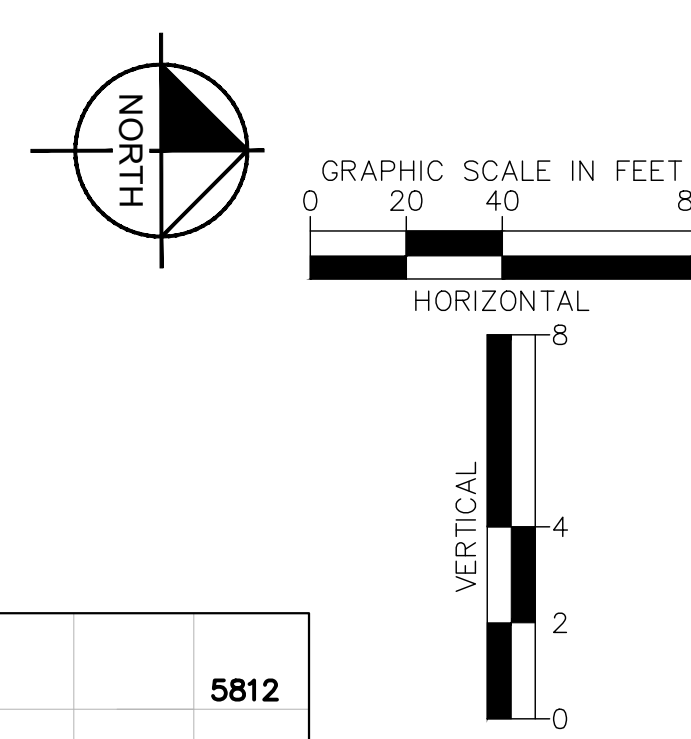
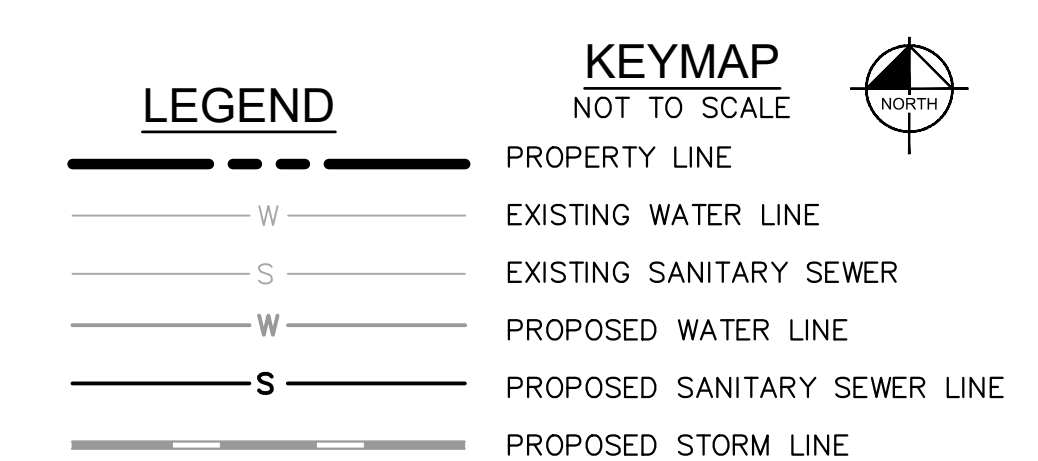
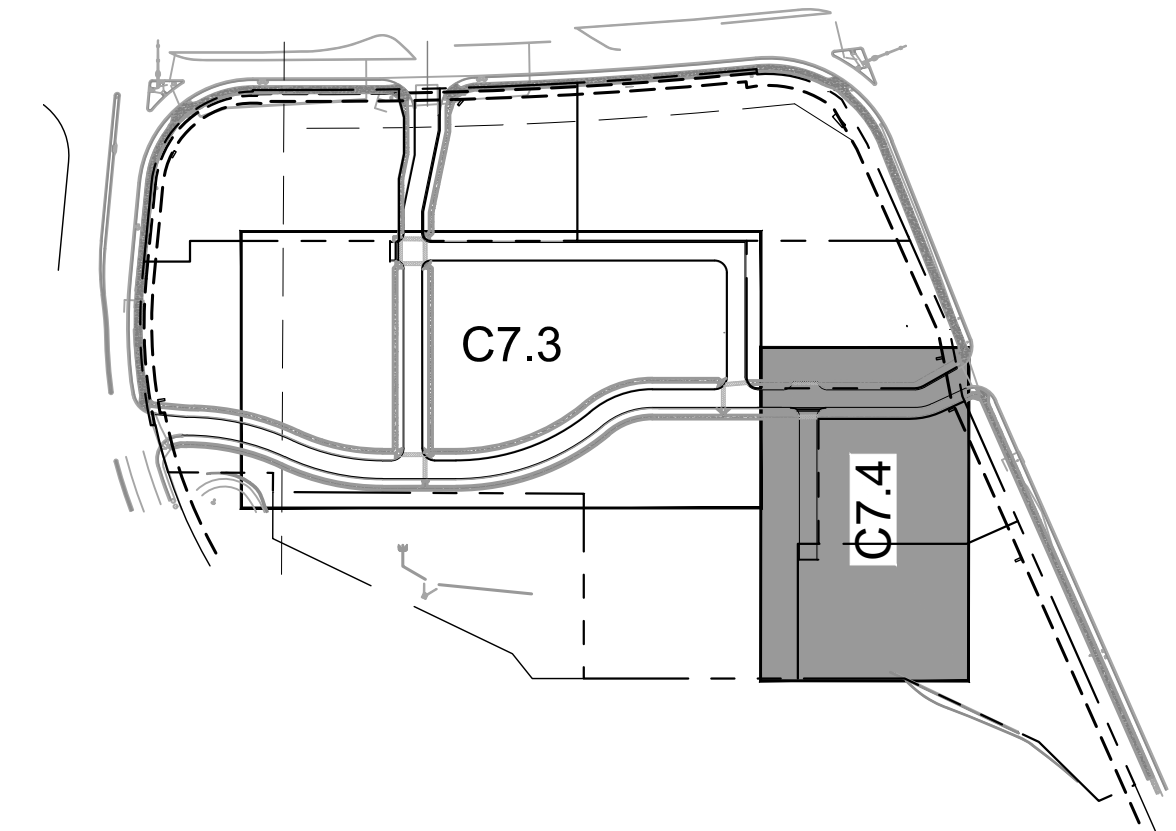
C7.3

1. The user shall verify the accuracy of the information provided on this drawing. Kimley-Horn and Associates, Inc. shall be without liability to Kimley-Horn and Associates, Inc. for any errors or omissions on this drawing.



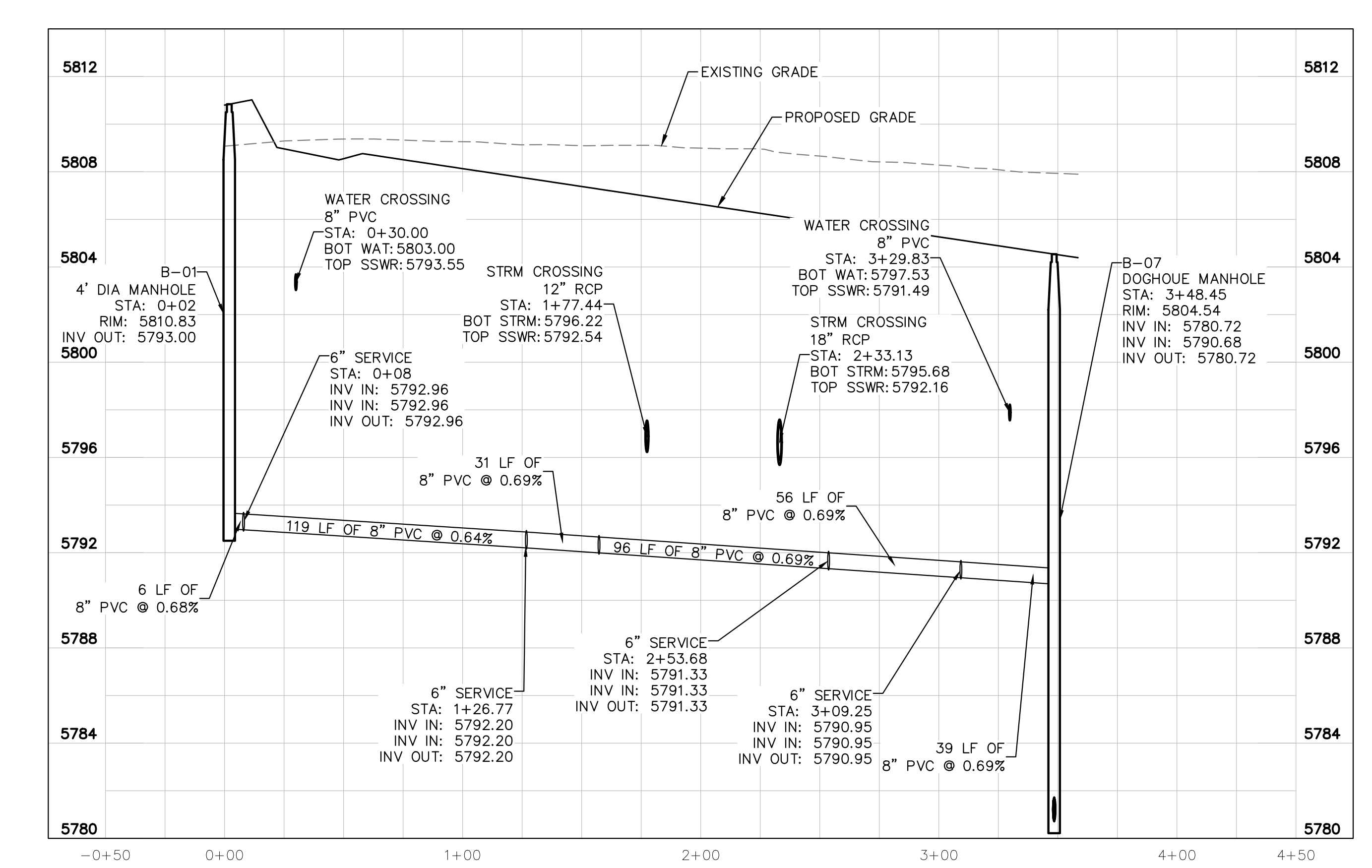
KEY NOTES

- ① WYE CONNECTION INTO PROPOSED 8" SANITARY SEWER MAIN
- ② 6" SDR 35 PVC SANITARY SEWER LINE LATERAL, LENGTH PER PLAN, SLOPE 1% MINIMUM
- ③ 8" SDR 35 PVC PUBLIC SANITARY SEWER LINE, LENGTH AND SLOPE PER PROFILE.
- ④ PROPOSED CLEANOUT. SEE DETAILS.
- ⑤ PROPOSED SANITARY SEWER MANHOLE. SEE DETAILS.
- ⑥ PROPOSED DOGHOUSE MANHOLE. SEE DETAILS.
- ⑦ NOT USED
- ⑧ PROPOSED WATER/SEWER CROSSING TO MAINTAIN 18" VERTICAL SEPARATION



SANITARY SEWER NOTES

1. ALL SANITARY SEWER CONSTRUCTION SHALL CONFORM TO THE PARKER WATER AND SANITATION DISTRICT SPECIFICATION.
2. ALL SEWER MAINS SHALL BE PVC, ASTM D-3034, SDR 35 OR APPROVED EQUAL. ALL SEWER MAIN SIZE IS 8" IN DIAMETER UNLESS OTHERWISE NOTED.
3. SEWER RIM ELEVATIONS SHOWN ARE APPROXIMATE ONLY AND ARE NOT TO BE TAKEN AS FINAL ELEVATIONS. RING AND COVER SHALL BE SET IN CENTERED CONCRETE RINGS WITH RAM-NECK FOR ADJUSTMENT TO MATCH FINAL PAVEMENT ELEVATIONS.
4. THE CONTRACTOR AND SURVEY CREW SHALL VERIFY ELEVATIONS OF EXISTING SEWER LINES AND MANHOLES TO BE TIED TO PRIOR TO CONSTRUCTION OR STAKING OF SANITARY SEWER.
5. NO UNDERDRAIN SYSTEM WILL BE ALLOWED TO BE PLACED IN MAINLINE OR SEWER SERVICE TRENCHES.
6. SEWER SERVICE TEES FOR EACH UNIT SHALL BE STAKED BY A SURVEY CREW AND FURNISHED AND INSTALLED BY THE CONTRACTOR. THE CONTRACTOR SHALL FURNISH TO THE ENGINEER "AS CONSTRUCTED" LOCATION OF TEES. SEWER WYES SHALL BE USED RATHER THAN TEES.
7. ALL MANHOLES SHALL BE 48-INCHES IN DIAMETER WITH 24-INCH RING AND COVER, ECCENTRIC CONE UNLESS OTHERWISE SPECIFIED.
8. PIPE BEDDING SHALL BE CLASS "B" AND SHALL CONFORM TO ASTM C-33 OR D-448 GRADATION NO. 6 OR NO. 67.
9. AT LEAST FIVE (5) DAYS PRIOR TO THE START OF CONSTRUCTION, A PRE-CONSTRUCTION MEETING WILL BE HELD AT THE OFFICE OF THE DISTRICT ENGINEER AND ATTENDED BY THE CONTRACTOR AND REPRESENTATIVES OF THE OTHER APPROVING AGENCIES. IT WILL BE THE RESPONSIBILITY OF THE CONTRACTOR TO CONTACT THE DISTRICT ENGINEER TO SCHEDULE THIS MEETING.
10. ALL PIPE LENGTHS ARE APPROXIMATE.
11. THE CONTRACTOR SHALL HAVE IN HIS POSSESSION AT ALL TIMES ONE (1) SIGNED COPY OF THE PLANS WHICH HAVE BEEN APPROVED BY THE PARKER WATER AND SANITATION DISTRICT AND THE DISTRICT ENGINEER AND ONE (1) COPY OF THE LATEST PARKER WATER AND SANITATION DISTRICT SPECIFICATION MANUAL.
12. ALL MANHOLES SHALL HAVE SHAPED INVERTS.
13. ALL SEWER LINES SHALL BE TESTED IN ACCORDANCE WITH THE PARKER WATER AND SANITATION DISTRICT STANDARDS AND SPECIFICATIONS PRIOR TO ACCEPTANCE OR ANY CONNECTION TO AN EXISTING SEWER LINE.
14. PRIOR TO START WORK WHERE SEWER MAIN TO BE INSTALLED INTO EXISTING DISTRICT SEWER SYSTEMS, THE NEAREST MANHOLE TO THE POINT OF TIE-IN SHALL BE PLUGGED WITH A PLUMBER'S PLUG ON THE INLET SIDE BY THE CONTRACTOR. THIS PLUG SHALL REMAIN IN PLACE UNTIL FINAL ACCEPTANCE BY THE DISTRICT. ITS PURPOSE SHALL BE TO PREVENT ANY MUD, WATER OR OTHER MATERIALS FROM ENTERING THE LINE DURING CONSTRUCTION. THE CONTRACTOR SHALL BE RESPONSIBLE FOR PUMPING AND CLEANING THESE MANHOLES AND REMOVING THE PLUG WHEN SO INSTRUCTED BY THE DISTRICT.
15. PRIOR TO PROBATIONARY ACCEPTANCE WALK-THROUGH, THE CLIENT SHALL JET CLEAN THE ENTIRE SANITARY SEWER SYSTEM AND PUMP OUT AT THE PLUGGED MANHOLE.
16. DOUBLE CLEANOUTS SHALL BE PROVIDED WITHIN 5 FEET OF EACH BUILDING CONNECTION. REFER TO MEP PLANS FOR CONTINUATION INSIDE BUILDING.
17. ALL SANITARY SERVICES TO CONNECT TO MAIN VIA WYE CONNECTION.
18. AT ALL POTABLE WATER MAIN AND SANITARY SEWER CROSSINGS WHERE THE PROPOSED SANITARY SEWER LINE LIES ABOVE THE PROPOSED WATER MAIN OR WITHIN 18" BELOW THE WATER MAIN, A CONCRETE ENCASUREMENT IS TO BE PROVIDED ALONG THE SANITARY SEWER PIPE FOR 10 FT ON EITHER SIDE OF THE CROSSING. CONCRETE ENCASUREMENT TO BE PROVIDED PER THE PWS DISTRICT SECTION 9.3.2.
19. AT ALL STORM SEWER AND SANITARY SEWER CROSSINGS WHERE THE PROPOSED SANITARY SEWER LINE LIES ABOVE THE PROPOSED STORM SEWER OR WITHIN 18" BELOW THE STORM SEWER, A CONCRETE ENCASUREMENT IS TO BE PROVIDED ALONG THE SANITARY SEWER PIPE FOR 10 FT ON EITHER SIDE OF THE CROSSING. CONCRETE ENCASUREMENT TO BE PROVIDED PER THE PWS DISTRICT SECTION 9.3.2.
20. PROVIDE WATER LOWERING PER PWS DISTRICT #27 WHERE CONFLICTS WITH STORM SEWER AND WATER SERVICES MAY EXIST.

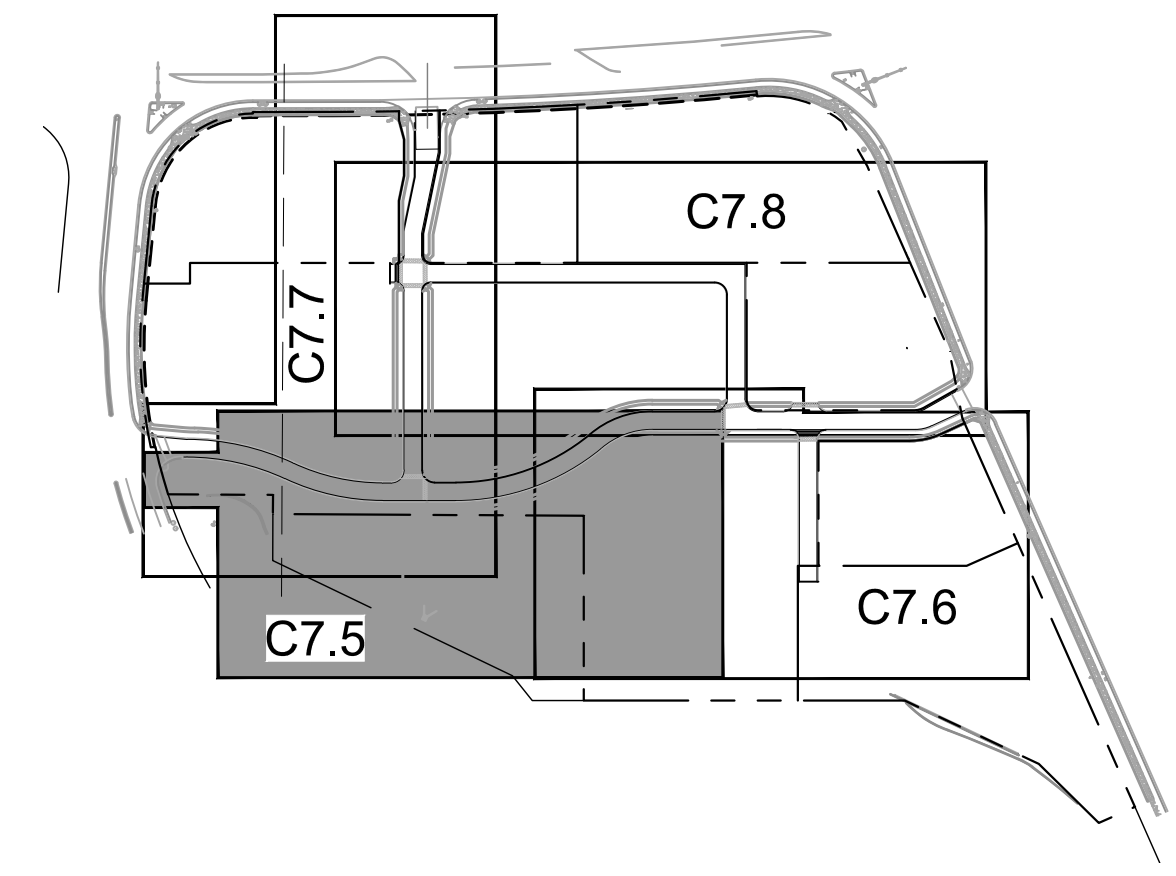
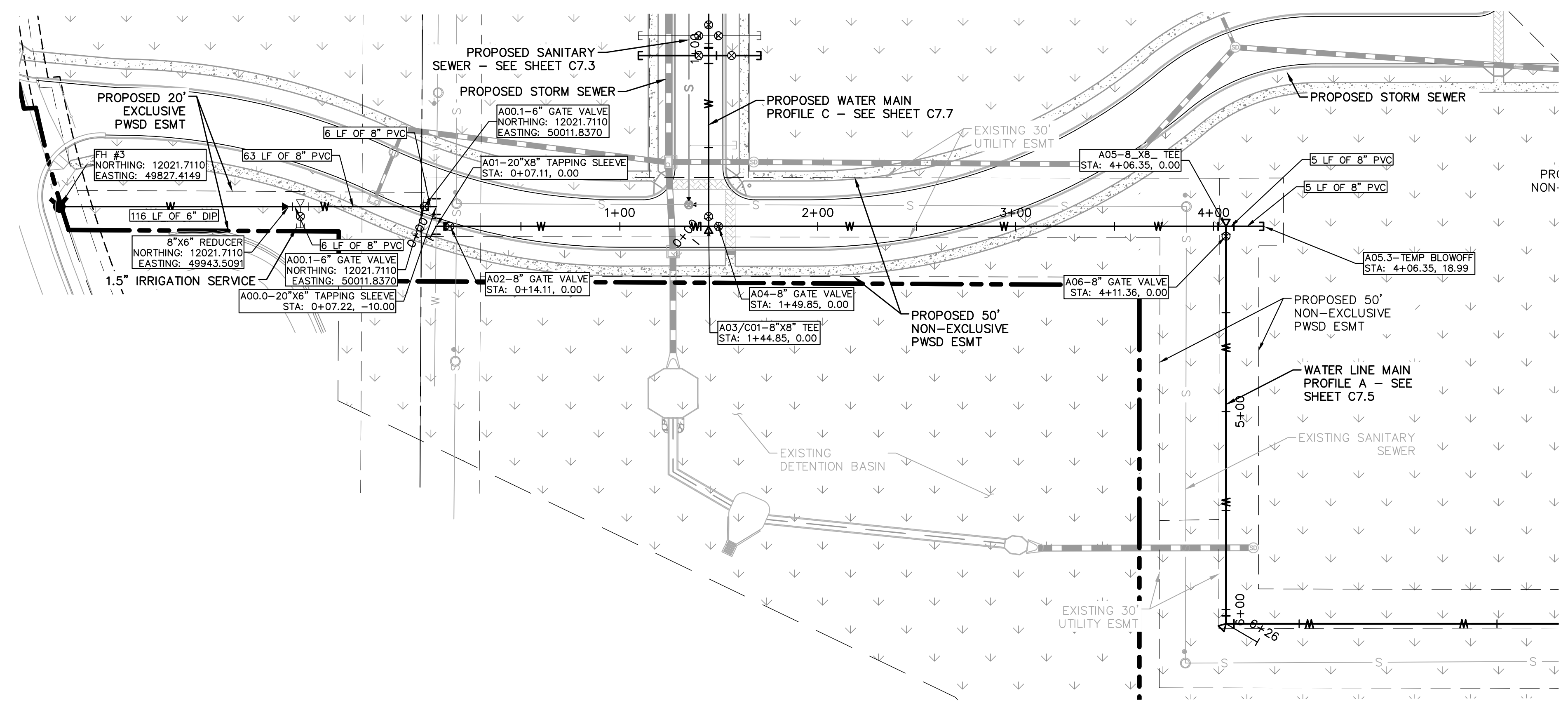


NO.	REVISION	BY	DATE						
2019 KIMLEY-HORN AND ASSOCIATES, INC. 4582 South Ulster Street, Suite 1500 Denver, Colorado 80237 (303) 228-2300									
DESIGNED BY: DLS DRAWN BY: ECZ CHECKED BY: DLS DATE: 11/14/19									
PARKER & PINE PARKER, CO CONSTRUCTION DOCUMENTS SANITARY SEWER PLAN AND PROFILE									
PRELIMINARY FOR REVIEW ONLY NOT FOR CONSTRUCTION 									
PROJECT NO. 096502001									
DRAWING NAME 096502001SS									
C7.4									

CAUTION
 CONTRACTOR IS TO VERIFY PRESENCE AND EXACT UTILITIES PRIOR TO CONSTRUCTION.



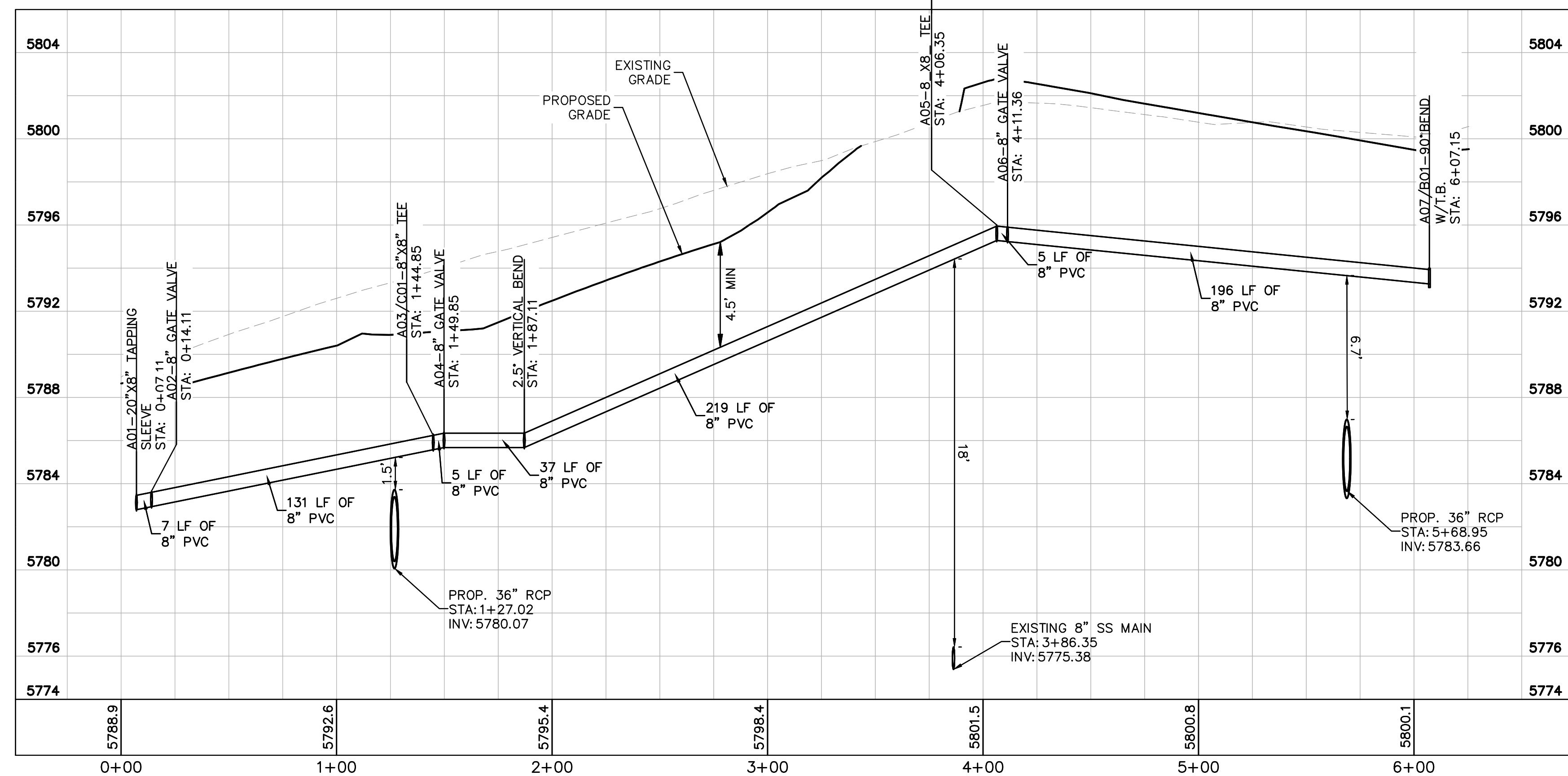
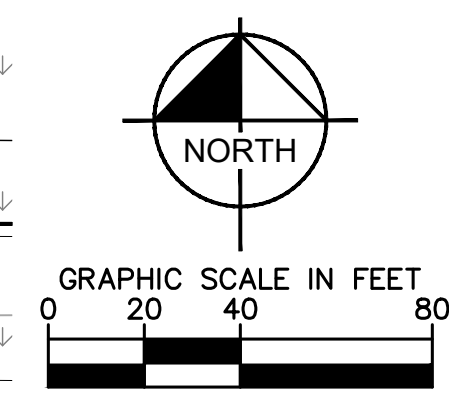
I:\Projects\096502001 - revised - 096502001\096502001\WT_PP.dwg, 7/21/2015, 5:05:10 PM, 10/16/2019, 10:57 AM
 THIS DOCUMENT, TOGETHER WITH THE CONCEPTS AND DESIGN PRESENTED HEREIN, AS AN INSTRUMENT OF SERVICE IS INTENDED ONLY FOR THE PROJECT, LOCATION AND CLIENT FOR WHICH IT WAS PREPARED. REVIEW OF AND UNAUTHORIZED REUSE OR ADAPTATION BY ANY OTHER PARTY IS STRICTLY PROHIBITED.



LEGEND

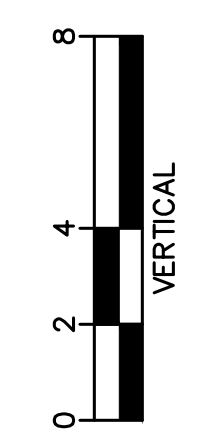
---	PROPERTY LINE
---	EXISTING WATER LINE
---	EXISTING SANITARY SEWER
---	PROPOSED WATER LINE
---	PROPOSED SANITARY SEWER LINE
---	PROPOSED STORM LINE

KEYMAP
NOT TO SCALE



WATER MAIN PROFILE A
 STRUCTURE A01 TO A07

HORIZONTAL SCALE: 1"=40'
 VERTICAL SCALE: 1"=4'



WATER NOTES

- CONTRACTOR TO POTHOLE EXISTING UTILITY LINES AT WATER LINE CROSSING AREAS PRIOR TO CONSTRUCTION.
- WATER LINE CONNECTION ELEVATION TO EXISTING WATER MAINS IS APPROXIMATE. CONTRACTOR TO POTHOLE AND VERIFY TIE IN ELEVATION PRIOR TO CONSTRUCTION OF WATER MAIN.
- CONTRACTOR TO MEET THE INSTALLATION REQUIREMENTS BY THE PARKER WATER AND SANITATION DISTRICT DESIGN STANDARDS AND CONSTRUCTION SPECIFICATIONS.
- 24 UNIT BUILDINGS (BUILDINGS 1-7) SHALL PROVIDE INTERNAL BACKFLOW PREVENTER AND EXTERNAL 2" DOMESTIC METER.
- 36 UNIT (BUILDING 8) SHALL PROVIDE INTERNAL BACK FLOW PREVENTERS AND 1-1/2" DOMESTIC METER.
- VERTICAL BENDS AND DEFLECTIONS MAYBE UTILIZED TO PROVIDE VERTICAL CHANGES IN ACCORDANCE WITH PWSD STANDARDS AS NEEDED.
- AT ALL POTABLE WATER MAIN AND SANITARY SEWER CROSSINGS WHERE THE PROPOSED SANITARY SEWER LINE LIES ABOVE THE PROPOSED WATER MAIN OR WITHIN 18" BELOW THE WATER MAIN, A CONCRETE ENCASUREMENT IS TO BE PROVIDED ALONG THE SANITARY SEWER PIPE FOR 10 FT ON EITHER SIDE OF THE CROSSING. CONCRETE ENCASUREMENT TO BE PROVIDED PER THE PWSD SECTION 9.3.2.
- AT ALL STORM SEWER AND SANITARY SEWER CROSSINGS WHERE THE PROPOSED SANITARY SEWER LINE LIES ABOVE THE PROPOSED STORM SEWER OR WITHIN 18" BELOW THE STORM SEWER, A CONCRETE ENCASUREMENT IS TO BE PROVIDED ALONG THE SANITARY SEWER PIPE FOR 10 FT ON EITHER SIDE OF THE CROSSING. CONCRETE ENCASUREMENT TO BE PROVIDED PER THE PWSD SECTION 9.3.2.
- ALL WATER LINES SHALL BE INSTALLED AT LEAST 4.5 FEET BELOW THE OFFICIAL STREET GRADE AND IN ALL OTHER PLACES AT LEAST 4.5 FEET BELOW THE SURFACE OF THE GROUND.

NO.	REVISION	BY	DATE	APPR

Kimley»Horn
 2019 KIMLEY-HORN AND ASSOCIATES, INC.
 4582 South Ulster Street, Suite 1500
 Denver, Colorado 80237 (303) 228-2300

DESIGNED BY: DLS
 DRAWN BY: ECZ
 CHECKED BY: DLS
 DATE: 11/14/19

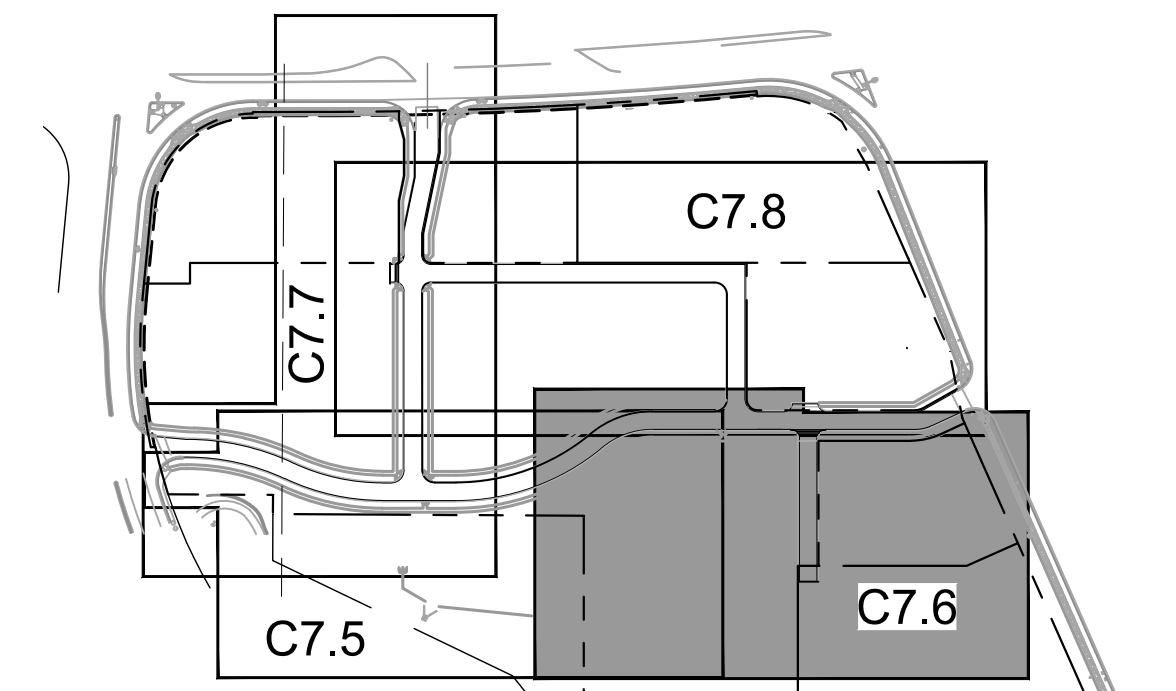
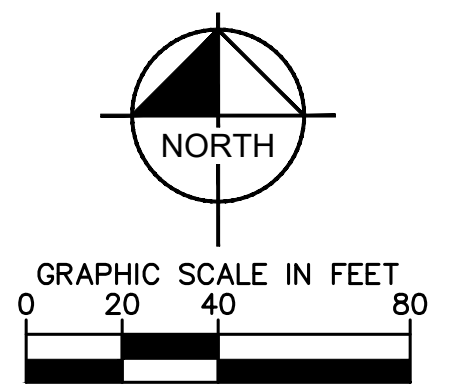
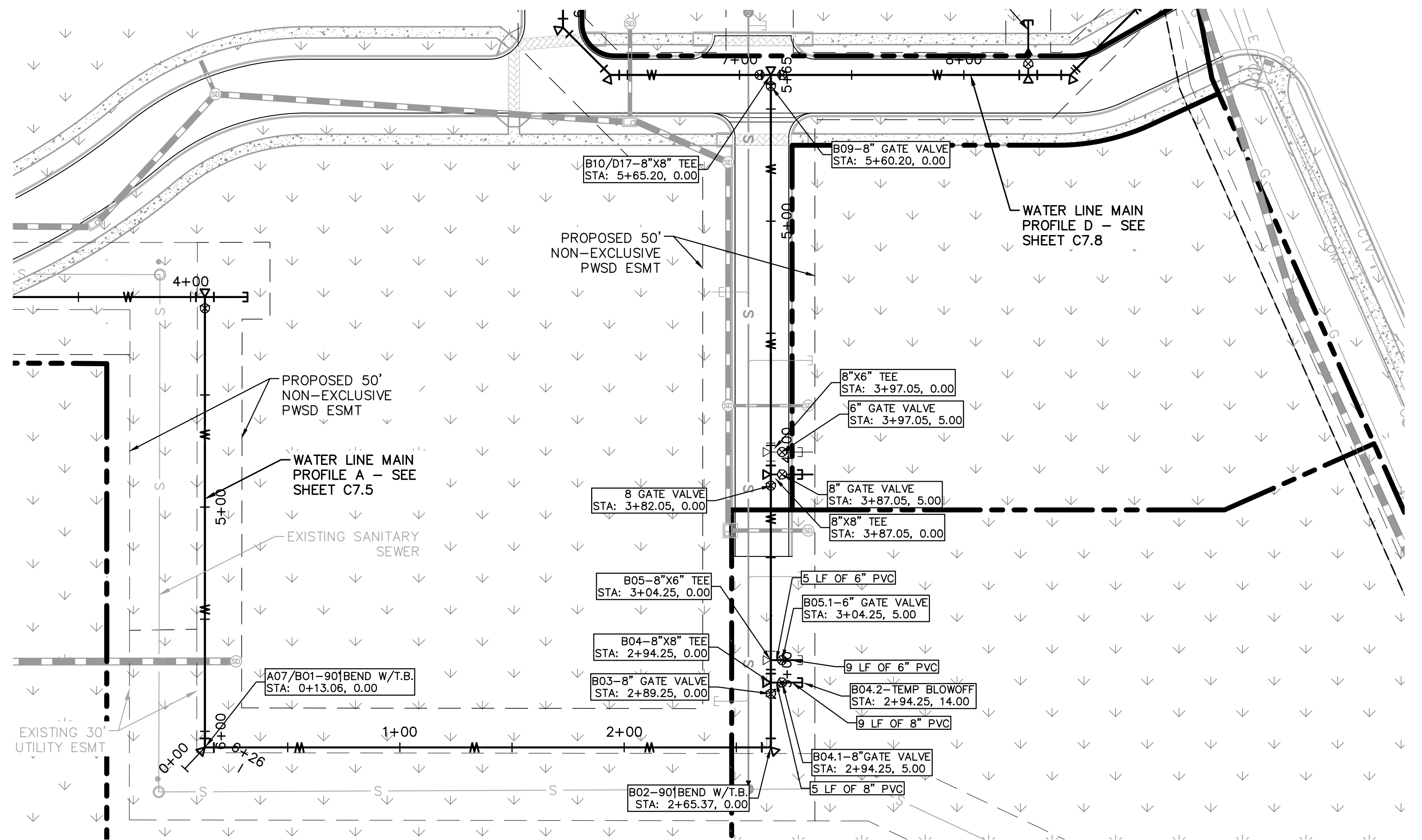
PARKER & PINE
 PARKER, CO
 CONSTRUCTION DOCUMENTS
WATER PLAN AND PROFILE - A

PRELIMINARY
 FOR REVIEW ONLY
 NOT FOR CONSTRUCTION
Kimley»Horn
 Kimley-Horn and Associates, Inc.

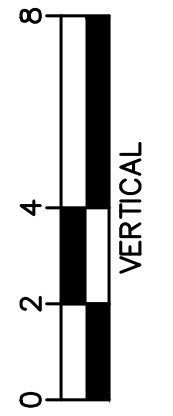
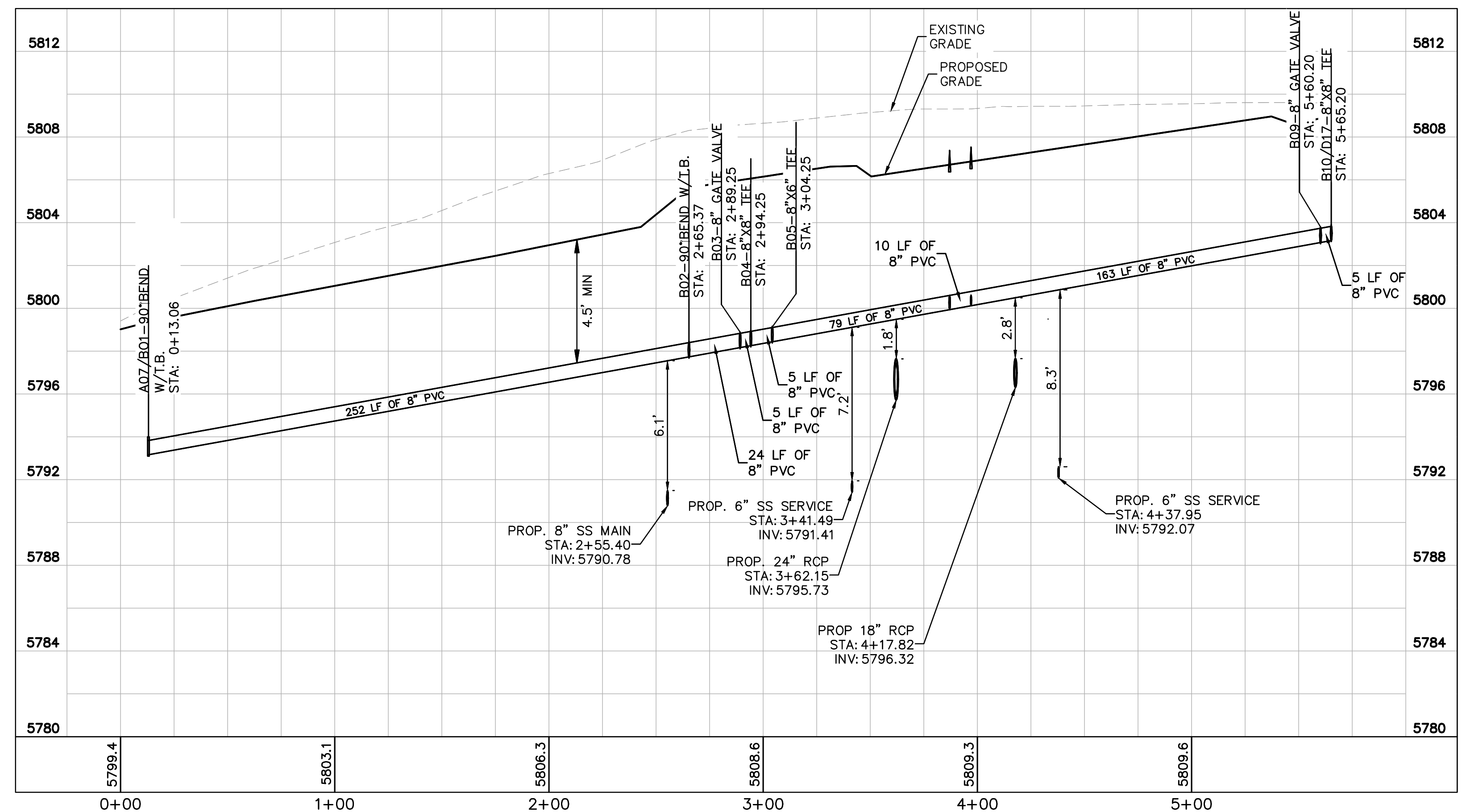
PROJECT NO.
 096502001
 DRAWING NAME
 096502001WT-PP
C7.5



I:\Projects\096502001 - revised - Parker - A\CADD\In\Sheet\096502001.WT_PP.dwg - 7/11/2019 10:57 AM
 THIS DOCUMENT, TOGETHER WITH THE CONCEPTS AND DESIGN PRESENTED HEREIN, AS AN INSTRUMENT OF SERVICE IS INTENDED ONLY FOR THE PROJECT, LOCATION AND CLIENT FOR WHICH IT WAS PREPARED. NO OTHER USE OR REUSE OF ANY PART OF THIS DOCUMENT IS PERMITTED WITHOUT THE WRITTEN AUTHORIZATION AND ADAPTATION BY KIMLEY-HORN AND ASSOCIATES, INC.



LEGEND	
—	PROPERTY LINE
—	EXISTING WATER LINE
—	EXISTING SANITARY SEWER
—	PROPOSED WATER LINE
—	PROPOSED SANITARY SEWER LINE
—	PROPOSED STORM LINE



WATER NOTES

- CONTRACTOR TO POTHOLE EXISTING UTILITY LINES AT WATER LINE CROSSING AREAS PRIOR TO CONSTRUCTION.
- WATER LINE CONNECTION ELEVATION TO EXISTING WATER MAINS IS APPROXIMATE. CONTRACTOR TO POTHOLE AND VERIFY TIE IN ELEVATION PRIOR TO CONSTRUCTION OF WATER MAIN.
- CONTRACTOR TO MEET THE INSTALLATION REQUIREMENTS BY THE PARKER WATER AND SANITATION DISTRICT DESIGN STANDARDS AND CONSTRUCTION SPECIFICATIONS.
- 24 UNIT BUILDINGS (BUILDINGS 1-7) SHALL PROVIDE INTERNAL BACKFLOW PREVENTER AND EXTERNAL 2" DOMESTIC METER.
- 36 UNIT (BUILDING 8) SHALL PROVIDE INTERNAL BACK FLOW PREVENTERS AND 1-1/2" DOMESTIC METER.
- VERTICAL BENDS AND DEFLECTIONS MAYBE UTILIZED TO PROVIDE VERTICAL CHANGES IN ACCORDANCE WITH PWSD STANDARDS AS NEEDED.
- AT ALL POTABLE WATER MAIN AND SANITARY SEWER CROSSINGS WHERE THE PROPOSED SANITARY SEWER LINE LIES ABOVE THE PROPOSED WATER MAIN OR WITHIN 18" BELOW THE WATER MAIN, A CONCRETE ENCASEMENT IS TO BE PROVIDED ALONG THE SANITARY SEWER PIPE FOR 10 FT ON EITHER SIDE OF THE CROSSING. CONCRETE ENCASEMENT TO BE PROVIDED PER THE PWSD SECTION 9.3.2.
- AT ALL STORM SEWER AND SANITARY SEWER CROSSINGS WHERE THE PROPOSED SANITARY SEWER LINE LIES ABOVE THE PROPOSED STORM SEWER OR WITHIN 18" BELOW THE STORM SEWER, A CONCRETE ENCASEMENT IS TO BE PROVIDED ALONG THE SANITARY SEWER PIPE FOR 10 FT ON EITHER SIDE OF THE CROSSING. CONCRETE ENCASEMENT TO BE PROVIDED PER THE PWSD SECTION 9.3.2.
- ALL WATER LINES SHALL BE INSTALLED AT LEAST 4.5 FEET BELOW THE OFFICIAL STREET GRADE AND IN ALL OTHER PLACES AT LEAST 4.5 FEET BELOW THE SURFACE OF THE GROUND.

NO.	REVISION	BY	DATE	APPR

Kimley»Horn
 2019 KIMLEY-HORN AND ASSOCIATES, INC.
 4582 South Ulster Street, Suite 1500
 Denver, Colorado 80237 (303) 228-2300

DESIGNED BY: DLS
 DRAWN BY: ECZ
 CHECKED BY: DLS
 DATE: 11/14/19

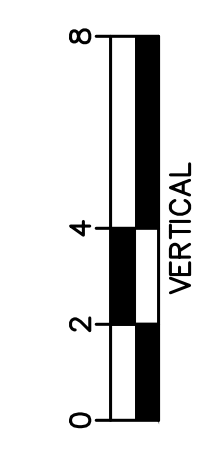
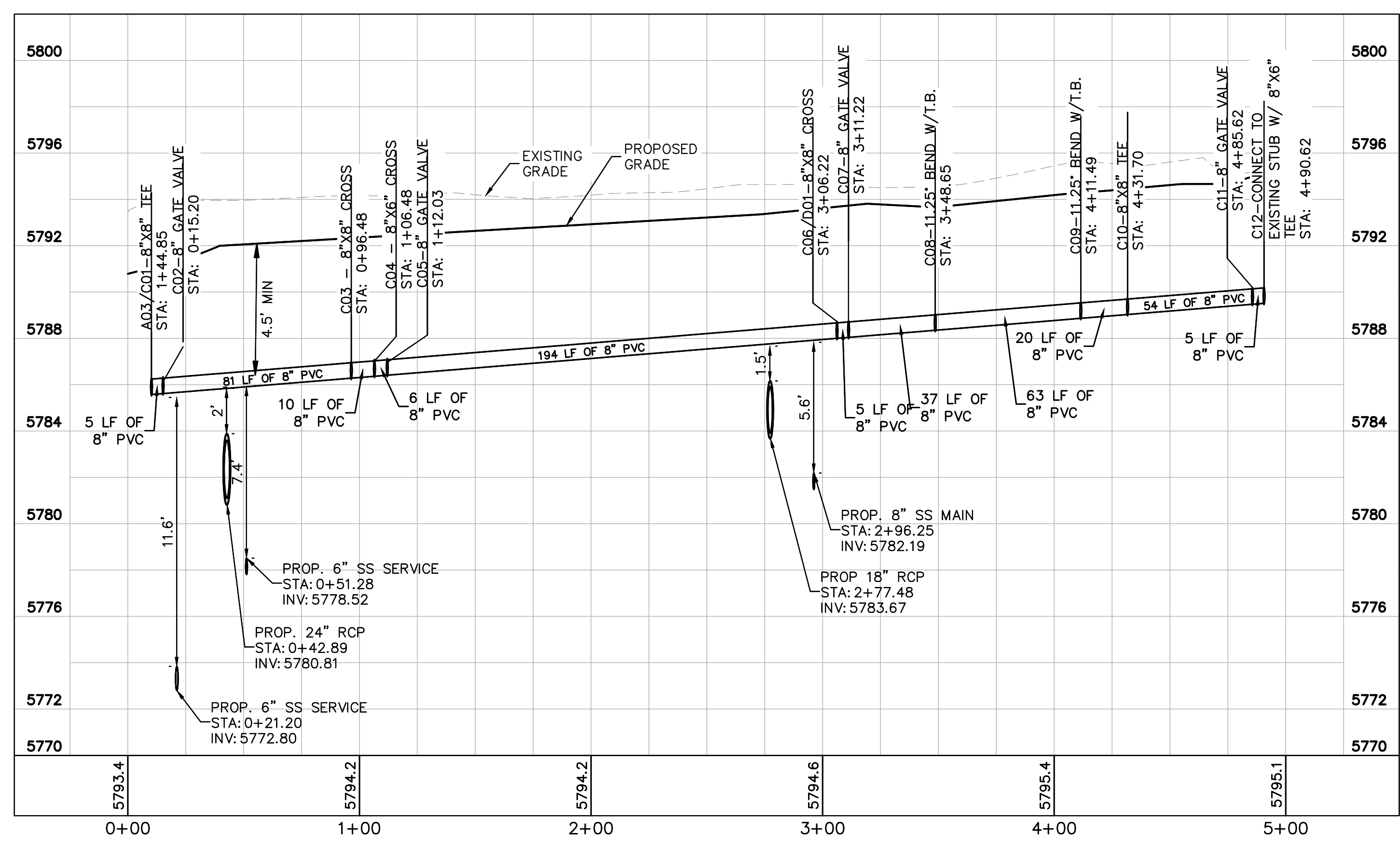
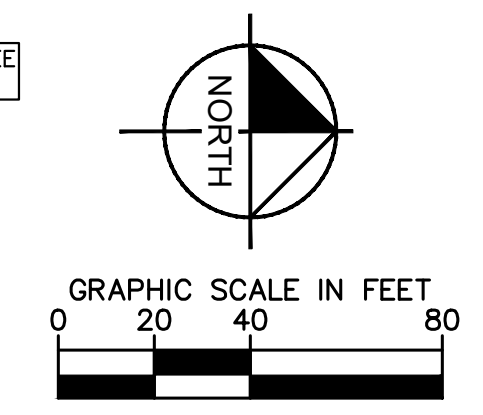
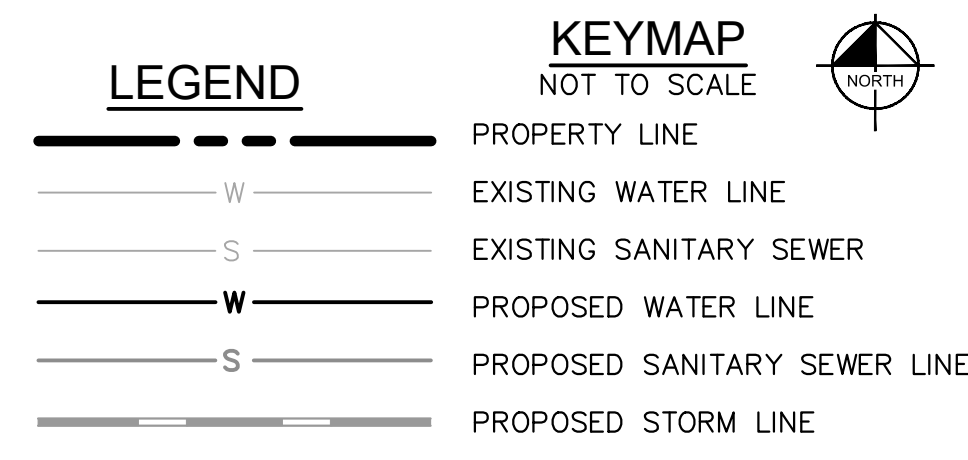
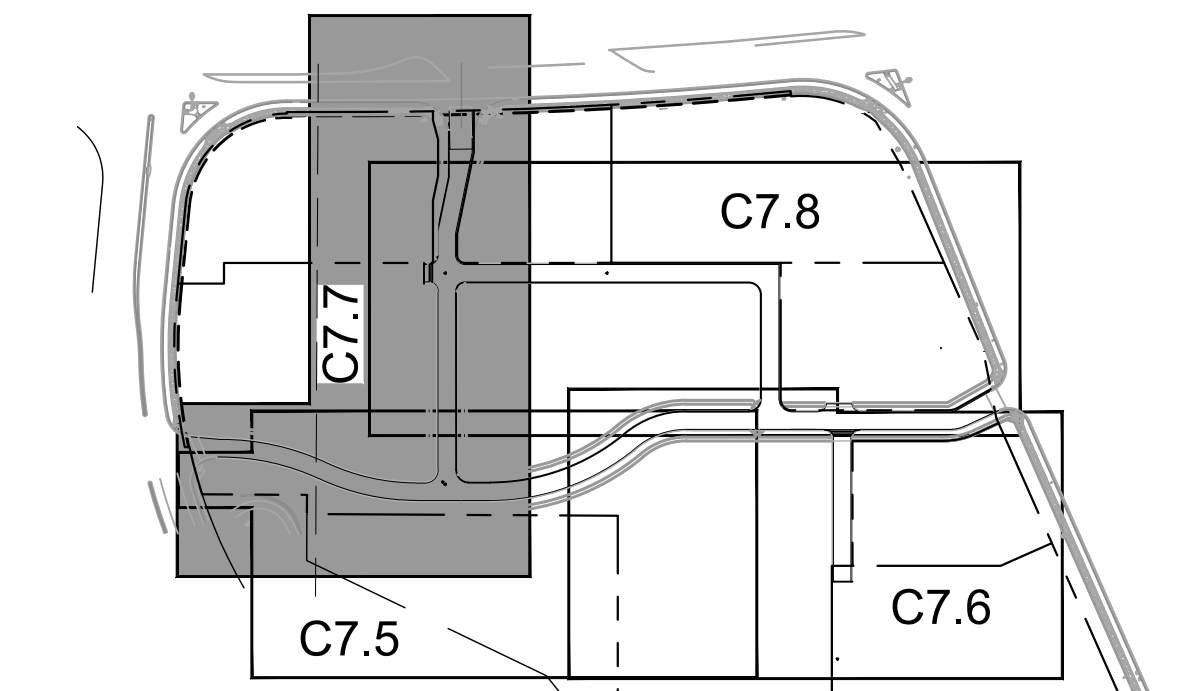
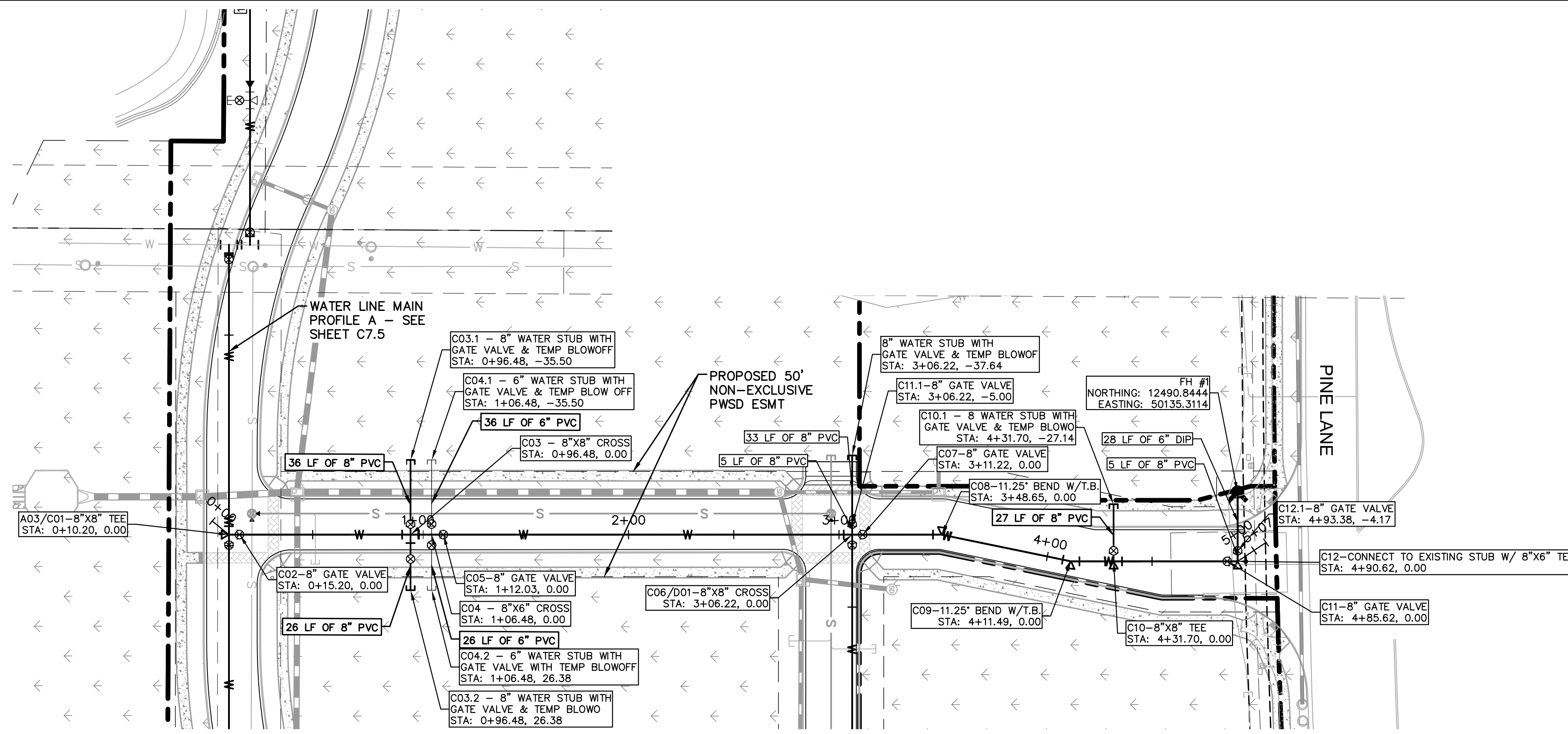
PARKER & PINE
 PARKER, CO
 CONSTRUCTION DOCUMENTS
WATER PLAN AND PROFILE - B

PRELIMINARY
 FOR REVIEW ONLY
 NOT FOR CONSTRUCTION
Kimley»Horn
 Kimley-Horn and Associates, Inc.

PROJECT NO.
 096502001
 DRAWING NAME
 096502001.WT-PP
C7.6



I:\Projects\096502001 - revised user: a\CAD\Drawings\096502001\WT_PP.dwg, Z:\projects_5\096502001_10.dwg, 10.07.19 AM
 THIS DOCUMENT, TOGETHER WITH THE CONCEPTS AND DESIGN PRESENTED HEREIN, AS AN INSTRUMENT OF SERVICE IS INTENDED ONLY FOR THE PROJECT, SITE AND CLIENT FOR WHICH IT WAS PREPARED. REVIEW OF, AND UNAUTHORIZED REUSE OR ADAPTATION OF, THIS DOCUMENT WITHOUT WRITTEN AUTHORIZATION AND ADAPTATION BY KIMLEY-HORN AND ASSOCIATES, INC. SHALL BE WITHOUT LIABILITY TO KIMLEY-HORN AND ASSOCIATES, INC.



WATER MAIN PROFILE C
 STRUCTURE C01 TO C12

HORIZONTAL SCALE: 1"=40'
 VERTICAL SCALE: 1"=4'

WATER NOTES

- CONTRACTOR TO POTHOLE EXISTING UTILITY LINES AT WATER LINE CROSSING AREAS PRIOR TO CONSTRUCTION.
- WATER LINE CONNECTION ELEVATION TO EXISTING WATER MAINS IS APPROXIMATE. CONTRACTOR TO POTHOLE AND VERIFY TIE IN ELEVATION PRIOR TO CONSTRUCTION OF WATER MAIN.
- CONTRACTOR TO MEET THE INSTALLATION REQUIREMENTS BY THE PARKER WATER AND SANITATION DISTRICT DESIGN STANDARDS AND CONSTRUCTION SPECIFICATIONS.
- 24 UNIT BUILDINGS (BUILDINGS 1-7) SHALL PROVIDE INTERNAL BACKFLOW PREVENTER AND EXTERNAL 2" DOMESTIC METER.
- 36 UNIT (BUILDING 8) SHALL PROVIDE INTERNAL BACK FLOW PREVENTERS AND 1-1/2" DOMESTIC METER.
- VERTICAL BENDS AND DEFLECTIONS MAYBE UTILIZED TO PROVIDE VERTICAL CHANGES IN ACCORDANCE WITH PWSD STANDARDS AS NEEDED.
- AT ALL POTABLE WATER MAIN AND SANITARY SEWER CROSSINGS WHERE THE PROPOSED SANITARY SEWER LINE LIES ABOVE THE PROPOSED WATER MAIN OR WITHIN 18" BELOW THE WATER MAIN, A CONCRETE ENCASEMENT IS TO BE PROVIDED ALONG THE SANITARY SEWER PIPE FOR 10 FT ON EITHER SIDE OF THE CROSSING. CONCRETE ENCASEMENT TO BE PROVIDED PER THE PWSD SECTION 9.3.2.
- AT ALL STORM SEWER AND SANITARY SEWER CROSSINGS WHERE THE PROPOSED SANITARY SEWER LINE LIES ABOVE THE PROPOSED STORM SEWER OR WITHIN 18" BELOW THE STORM SEWER, A CONCRETE ENCASEMENT IS TO BE PROVIDED ALONG THE SANITARY SEWER PIPE FOR 10 FT ON EITHER SIDE OF THE CROSSING. CONCRETE ENCASEMENT TO BE PROVIDED PER THE PWSD SECTION 9.3.2.
- ALL WATER LINES SHALL BE INSTALLED AT LEAST 4.5 FEET BELOW THE OFFICIAL STREET GRADE AND IN ALL OTHER PLACES AT LEAST 4.5 FEET BELOW THE SURFACE OF THE GROUND.

NO.	REVISION	BY	DATE	APPR

Kimley»Horn
 2019 KIMLEY-HORN AND ASSOCIATES, INC.
 4582 South Ulster Street, Suite 1500
 Denver, Colorado 80237 (303) 228-2300

DESIGNED BY: DLS
 DRAWN BY: ECZ
 CHECKED BY: DLS
 DATE: 11/14/19

PARKER & PINE
 PARKER, CO
 CONSTRUCTION DOCUMENTS
WATER PLAN AND PROFILE - C

PRELIMINARY
 FOR REVIEW ONLY
 NOT FOR CONSTRUCTION
Kimley»Horn
 Kimley-Horn and Associates, Inc.

PROJECT NO.
 096502001
 DRAWING NAME
 096502001 WT-PP

C7.7



