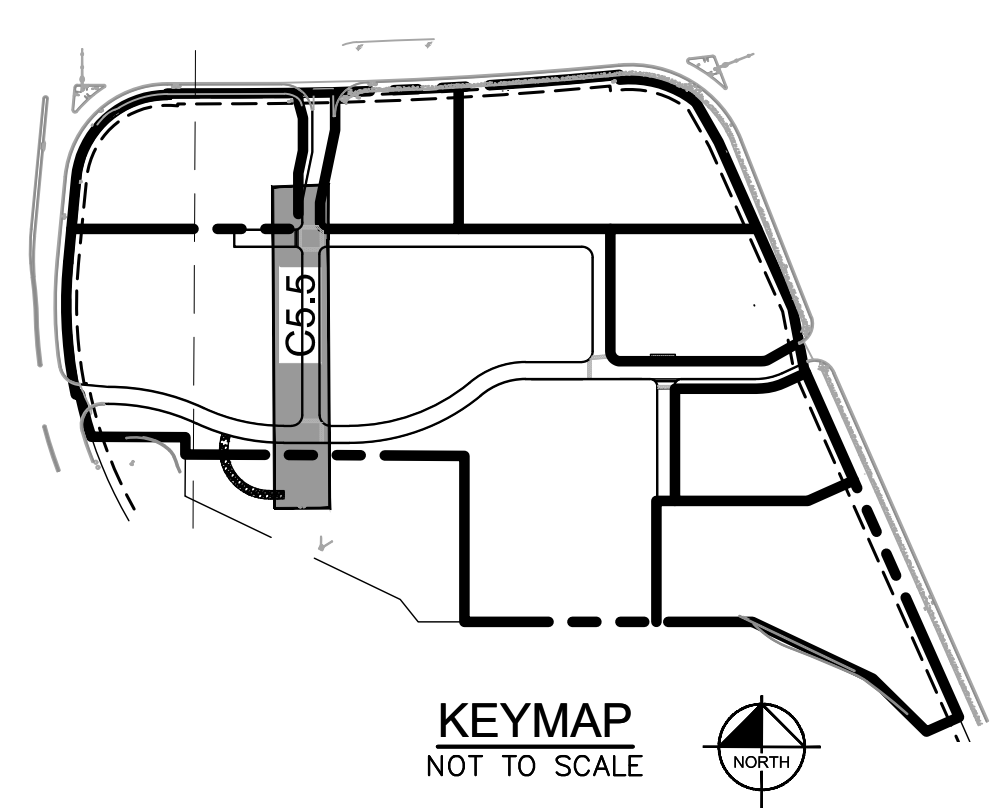
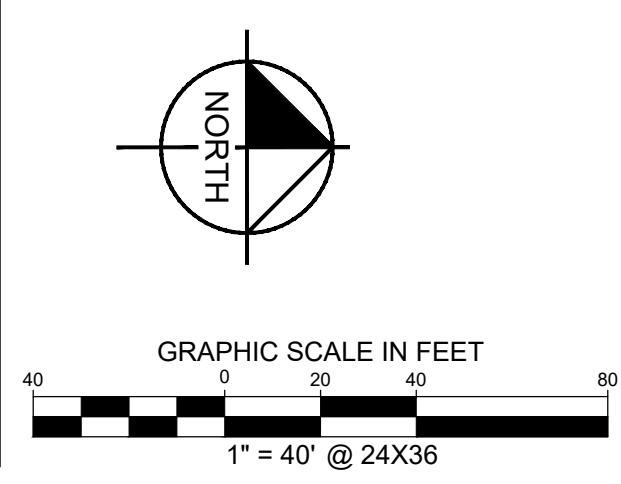
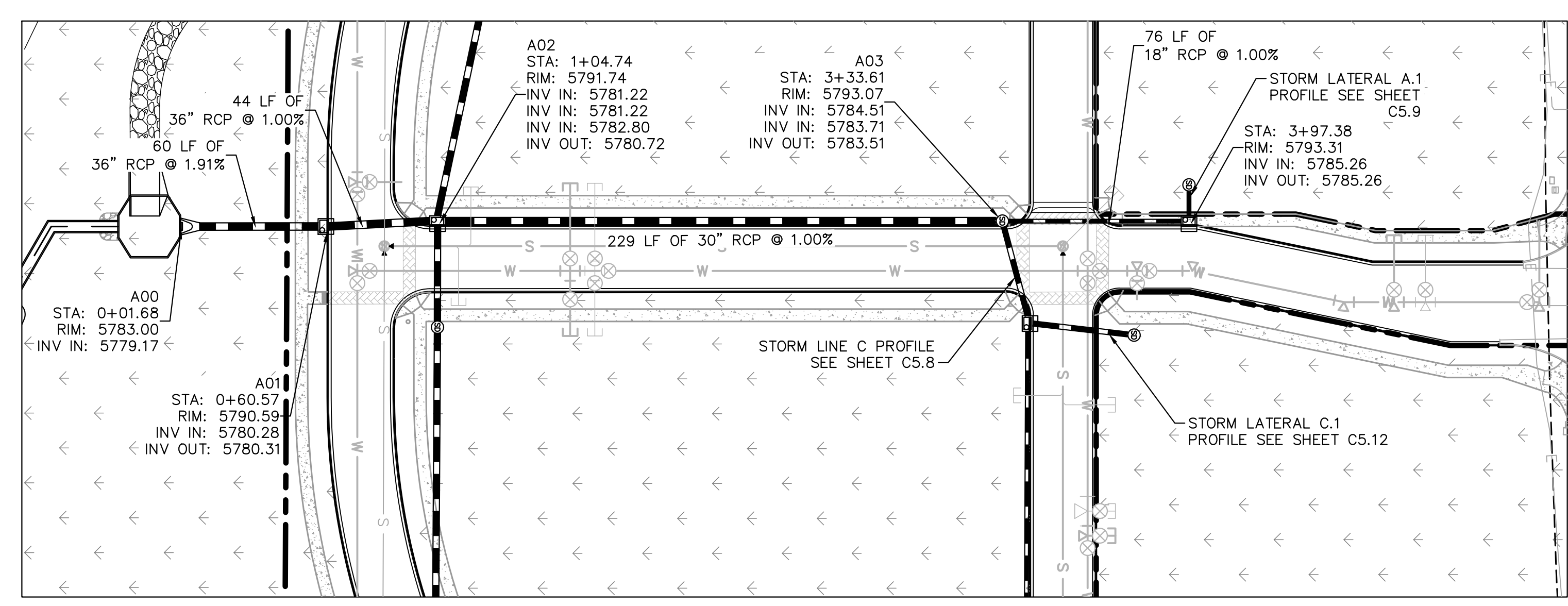


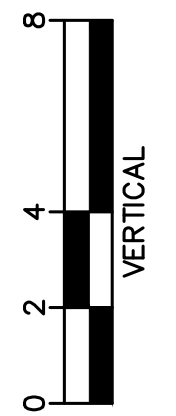
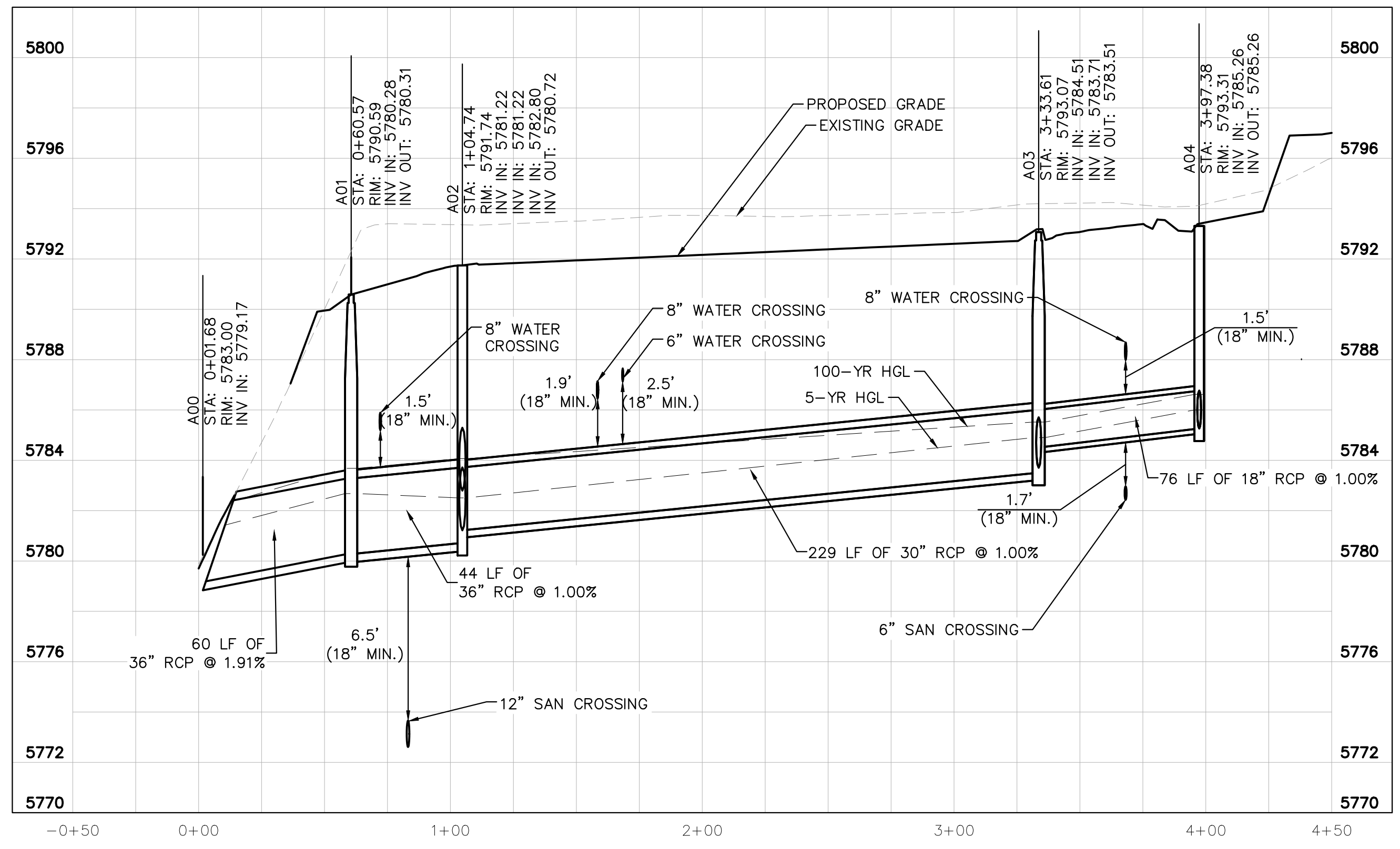
K:\DEN\_Civil\096502001 - Mixed Use Parker Rd\CADD\PlanSheets\096502001S1.dwg - Kasprzak, Jack, 10/8/2019, 10:57 AM  
 30% FINAL DESIGN WITH THE TOWN OF PARKER, COLORADO. THIS DOCUMENT IS THE PROPERTY OF KIMLEY-HORN AND ASSOCIATES, INC. NO PART OF THIS DOCUMENT SHALL BE REPRODUCED OR TRANSMITTED IN ANY FORM OR BY ANY MEANS, ELECTRONIC OR MECHANICAL, INCLUDING PHOTOCOPYING, RECORDING, OR BY ANY INFORMATION STORAGE AND RETRIEVAL SYSTEM, WITHOUT THE WRITTEN AUTHORIZATION AND APPROVAL BY KIMLEY-HORN AND ASSOCIATES, INC.



**LEGEND**

- PROPERTY LINE
- PROPOSED STORM SEWER
- PROPOSED STORM INLET
- ⊕ PROPOSED STORM MANHOLE

STRUCTURE TABLE		
STRUCTURE NAME:	DESCRIPTION:	LOCATION:
A00	OUTLET	N: 11940.6071 E: 50137.5692
A01	TYPE R 10' INLET	N: 12000.1427 E: 50137.5726
A02	TYPE R MODIFIED INLET	N: 12044.3094 E: 50137.5726
A03	5' DIA MH	N: 12273.1682 E: 50135.4060
A04	TYPE R 5' INLET	N: 12348.8235 E: 50137.5726
A05	5' DIA MH	N: 12348.8235 E: 50120.7393
B00	TYPE R 10' INLET	N: 12026.9293 E: 49987.6006
B01	5' DIA MH WITH GRATE LID	N: 12075.0969 E: 49987.5740
B02	5' DIA MH WITH GRATE LID	N: 12044.1939 E: 50178.4126
B03	TYPE R 5' INLET	N: 12046.5109 E: 50366.5611
B04	5' DIA MH	N: 12102.1929 E: 50421.7791
B05	TYPE R 5' INLET	N: 12092.1007 E: 50606.3725
B05.1	5' DIA MH WITH GRATE LID	N: 12133.6552 E: 50606.5543
B06	5' DIA MH	N: 12071.7851 E: 50650.2930
B07	5' DIA MH	N: 11963.3147 E: 50650.2930
B07.1	5' DIA MH WITH GRATE LID	N: 11963.3062 E: 50685.9988
B08	TYPE R 10' INLET	N: 11907.6200 E: 50652.4644
B08.1	5' DIA MH WITH GRATE LID	N: 11907.6120 E: 50685.9988
C00	TYPE R 5' INLET	N: 12284.8966 E: 50176.9060
C00.1	5' DIA MH WITH GRATE LID	N: 12326.5470 E: 50181.6014
C01	TYPE R 5' MANHOLE	N: 12284.2299 E: 50375.1453
C01.1	5' DIA MH WITH GRATE LID	N: 12328.8687 E: 50374.9646
D00	OUTLET	N: 11849.1557 E: 50334.9577
D01	5' DIA MH WITH GRATE LID	N: 11849.2713 E: 50430.9191



STORM LINE A PROFILE [STA 0+00 TO 4+50]

HORIZONTAL SCALE: 1"=40'  
VERTICAL SCALE: 1"=4'

THE TOWN OF PARKER REVIEW CONSTITUTES GENERAL COMPLIANCE WITH THE TOWN'S STANDARDS AND APPROVED VARIANCES, SUBJECT TO THESE PLANS BEING STAMPED, SIGNED, AND DATED BY THE PROFESSIONAL ENGINEER OF RECORD. REVIEW BY THE TOWN DOES NOT CONSTITUTE APPROVAL OF THE PLAN DESIGN OR ACCURACY AND CORRECTNESS OF ENGINEERING CALCULATIONS. ERRORS IN THE DESIGN OR CALCULATIONS REMAIN THE RESPONSIBILITY OF REGISTERED PROFESSIONAL ENGINEER WHOSE STAMP AND SIGNATURE ARE AFFIXED TO THIS DOCUMENT.

THIS REVIEW DOES NOT CONSTITUTE APPROVAL OF ANY PRIVATE ON-SITE IMPROVEMENTS WHICH MAY BE SHOWN. CONSTRUCTION CANNOT COMMENCE UNTIL ALL REQUIRED DRAINAGE/TRAFFIC REPORT(S), FINAL DEVELOPMENT PLAN(S), SPECIAL REVIEW(S), GRADING PERMIT, AND/OR OTHER PERMITS ARE COMPLETE, APPROVED AND ON FILE WITH THE TOWN OF PARKER.

TOWN OF PARKER, DIRECTOR OF ENGINEERING \_\_\_\_\_ DATE \_\_\_\_\_

NO.	REVISION	BY	DATE	APPR

**Kimley»Horn**  
 2020 KIMLEY-HORN AND ASSOCIATES, INC.  
 4582 South Ulster Street, Suite 1500  
 Denver, Colorado 80237 (303) 228-2300

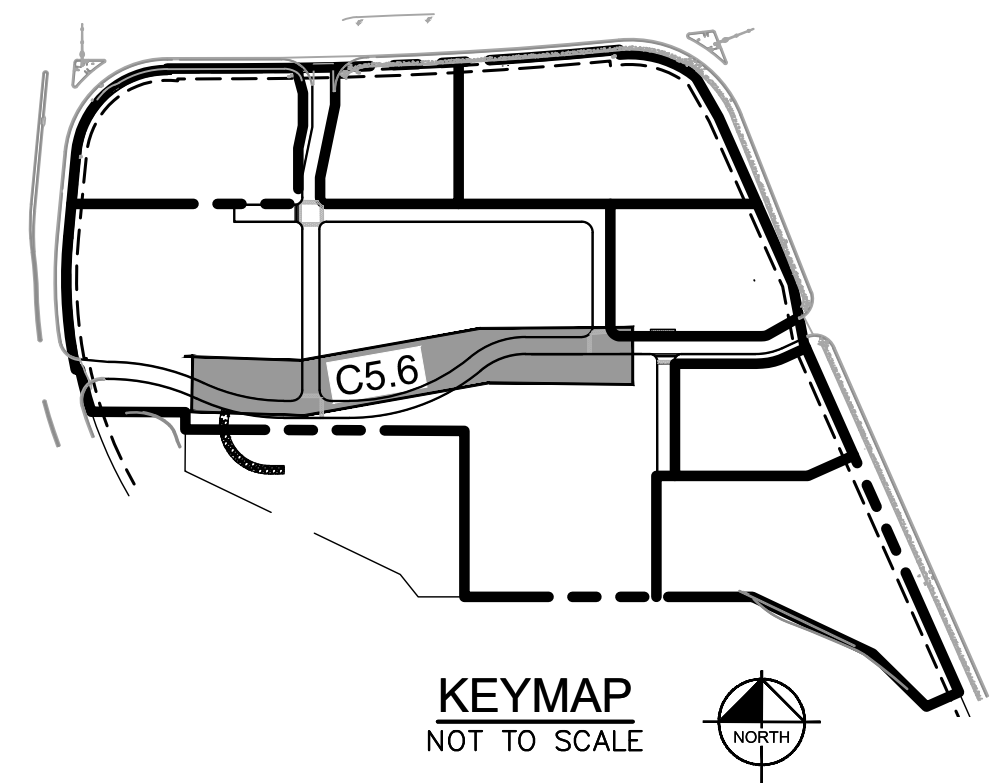
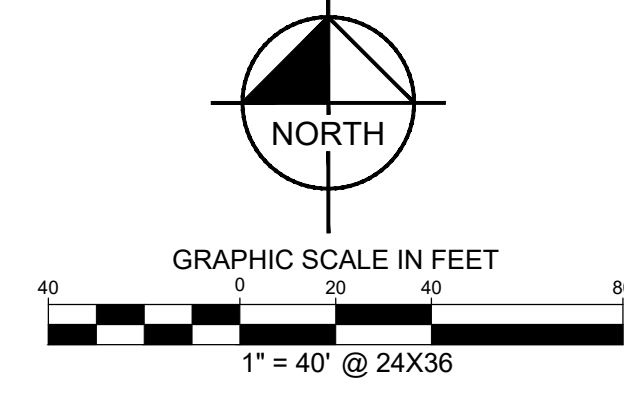
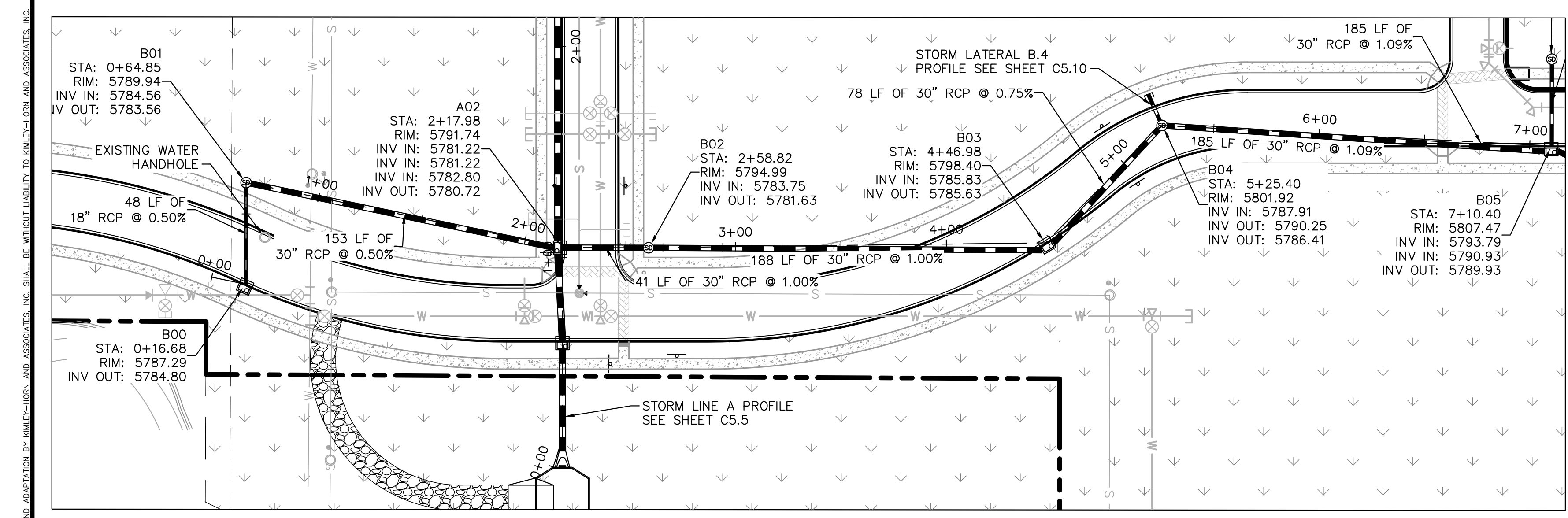
DESIGNED BY: DLS  
 DRAWN BY: ECZ  
 CHECKED BY: DLS  
 DATE: 03/11/20

PARKER & PINE MINOR DEVELOPMENT FILING NO. 1  
 PARKER, CO  
 CONSTRUCTION DOCUMENTS  
**STORM-A PLAN AND PROFILE**

**PRELIMINARY**  
 FOR REVIEW ONLY  
 NOT FOR  
 CONSTRUCTION  
**Kimley»Horn**  
 Kimley-Horn and Associates, Inc.

PROJECT NO.  
096502001  
 DRAWING NAME  
096502001S1  
**C5.5**

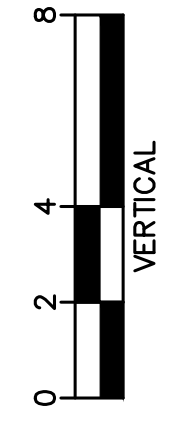
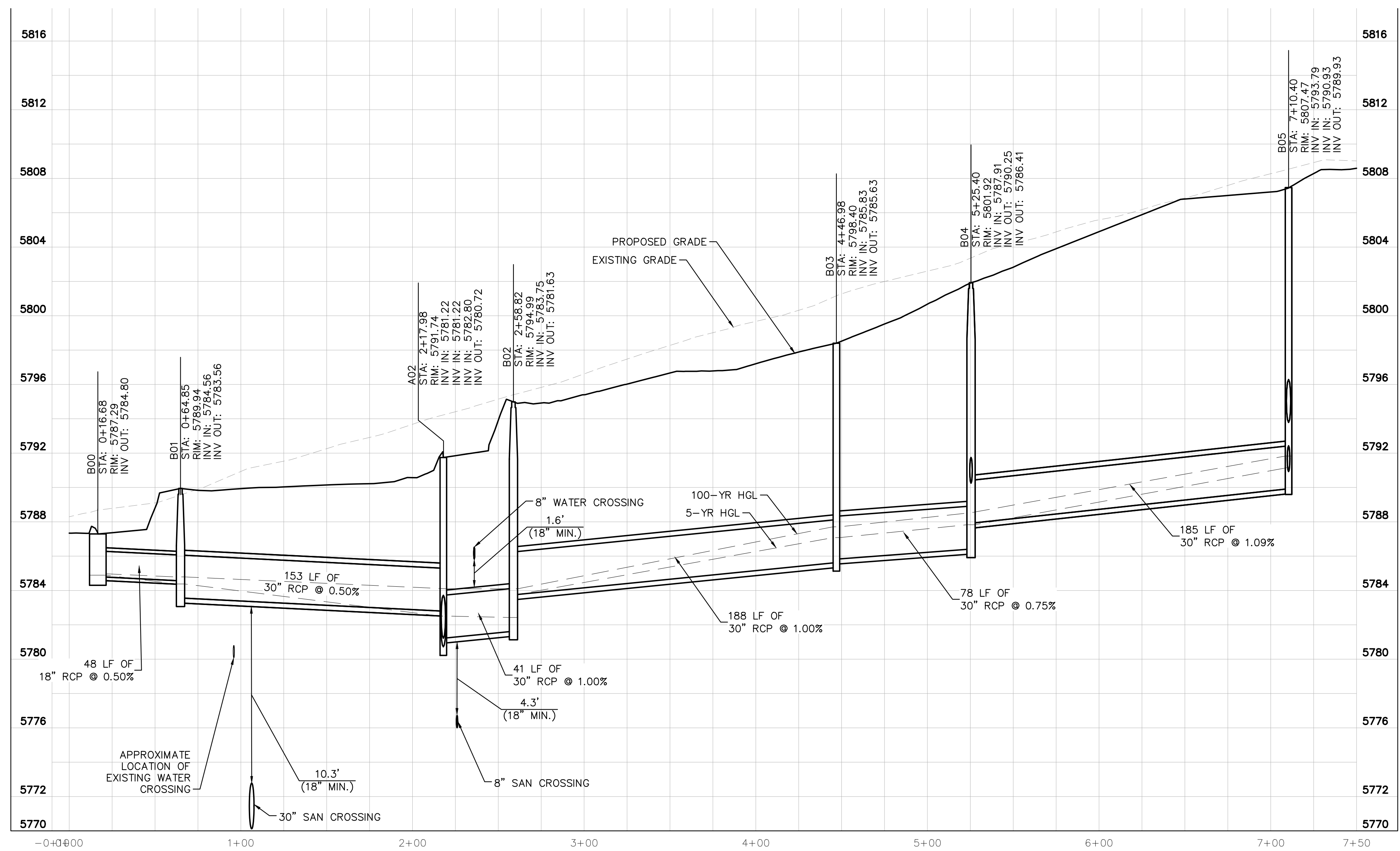




**LEGEND**

- PROPERTY LINE
- PROPOSED STORM SEWER
- PROPOSED STORM INLET
- ⊙ PROPOSED STORM MANHOLE

STRUCTURE TABLE		
STRUCTURE NAME:	DESCRIPTION:	LOCATION:
A00	OUTLET	N: 11940.6071 E: 50137.5692
A01	TYPE R 10' INLET	N: 12000.1427 E: 50137.5726
A02	TYPE R MODIFIED INLET	N: 12044.3094 E: 50137.5726
A03	5' DIA MH	N: 12273.1682 E: 50135.4060
A04	TYPE R 5' INLET	N: 12348.8235 E: 50137.5726
A05	5' DIA MH	N: 12348.8235 E: 50120.7393
B00	TYPE R 10' INLET	N: 12026.9293 E: 49987.6006
B01	5' DIA MH WITH GRATE LID	N: 12075.0969 E: 49987.5740
B02	5' DIA MH WITH GRATE LID	N: 12044.1939 E: 50178.4126
B03	TYPE R 5' INLET	N: 12046.5109 E: 50366.5611
B04	5' DIA MH	N: 12102.1929 E: 50421.7791
B05	TYPE R 5' INLET	N: 12092.1007 E: 50606.3725
B05.1	5' DIA MH WITH GRATE LID	N: 12133.6552 E: 50606.5543
B06	5' DIA MH	N: 12071.7851 E: 50650.2930
B07	5' DIA MH	N: 11963.3147 E: 50650.2930
B07.1	5' DIA MH WITH GRATE LID	N: 11963.3062 E: 50685.9988
B08	TYPE R 10' INLET	N: 11907.6200 E: 50652.4644
B08.1	5' DIA MH WITH GRATE LID	N: 11907.6120 E: 50685.9988
C00	TYPE R 5' INLET	N: 12284.8966 E: 50176.9060
C00.1	5' DIA MH WITH GRATE LID	N: 12326.5470 E: 50181.6014
C01	TYPE R 5' MANHOLE	N: 12284.2299 E: 50375.1453
C01.1	5' DIA MH WITH GRATE LID	N: 12328.8687 E: 50374.9646
D00	OUTLET	N: 11849.1557 E: 50334.9577
D01	5' DIA MH WITH GRATE LID	N: 11849.2713 E: 50430.9191



STORM LINE B PROFILE [STA 0+00 TO 7+00]

HORIZONTAL SCALE: 1"=40'  
VERTICAL SCALE: 1"=4'

THE TOWN OF PARKER REVIEW CONSTITUTES GENERAL COMPLIANCE WITH THE TOWN'S STANDARDS AND APPROVED VARIANCES, SUBJECT TO THESE PLANS BEING STAMPED, SIGNED, AND DATED BY THE PROFESSIONAL ENGINEER OF RECORD. REVIEW BY THE TOWN DOES NOT CONSTITUTE APPROVAL OF THE PLAN DESIGN OR ACCURACY AND CORRECTNESS OF ENGINEERING CALCULATIONS. ERRORS IN THE DESIGN OR CALCULATIONS REMAIN THE RESPONSIBILITY OF REGISTERED PROFESSIONAL ENGINEER WHOSE STAMP AND SIGNATURE ARE AFFIXED TO THIS DOCUMENT.

THIS REVIEW DOES NOT CONSTITUTE APPROVAL OF ANY PRIVATE ON-SITE IMPROVEMENTS WHICH MAY BE SHOWN. CONSTRUCTION CANNOT COMMENCE UNTIL ALL REQUIRED DRAINAGE/TRAFFIC REPORT(S), FINAL DEVELOPMENT PLAN(S), SPECIAL REVIEW(S), GRADING PERMIT, AND/OR OTHER PERMITS ARE COMPLETE, APPROVED AND ON FILE WITH THE TOWN OF PARKER.

TOWN OF PARKER, DIRECTOR OF ENGINEERING \_\_\_\_\_ DATE \_\_\_\_\_



K:\DEN\_Civil\096502001 - Mixed Use Parker Rd\CADD\PlanSheets\096502001S1.dwg Kasprzak, Jack 10/8/2019 10:57 AM

NO.	REVISION	BY	DATE	APPR

**Kimley»Horn**  
2020 KIMLEY-HORN AND ASSOCIATES, INC.  
4582 South Ulster Street, Suite 1500  
Denver, Colorado 80237 (303) 228-2300

DESIGNED BY: DLS  
DRAWN BY: ECZ  
CHECKED BY: DLS  
DATE: 03/11/20

PARKER & PINE MINOR DEVELOPMENT FILING NO. 1  
PARKER, CO  
CONSTRUCTION DOCUMENTS  
STORM-B PLAN AND PROFILE

PRELIMINARY  
FOR REVIEW ONLY  
NOT FOR  
CONSTRUCTION

PROJECT NO.  
096502001  
DRAWING NAME  
096502001S1

C5.6



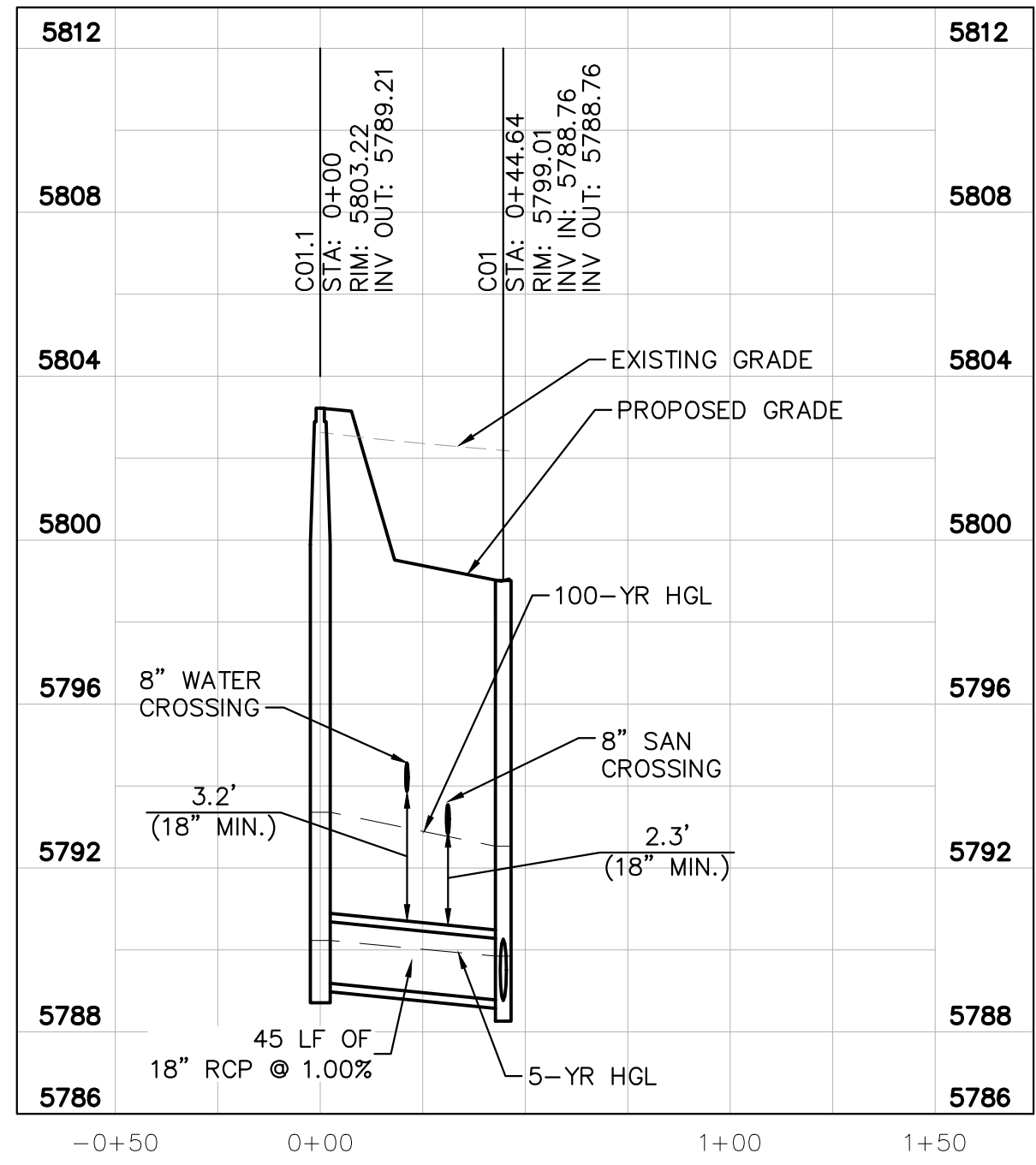
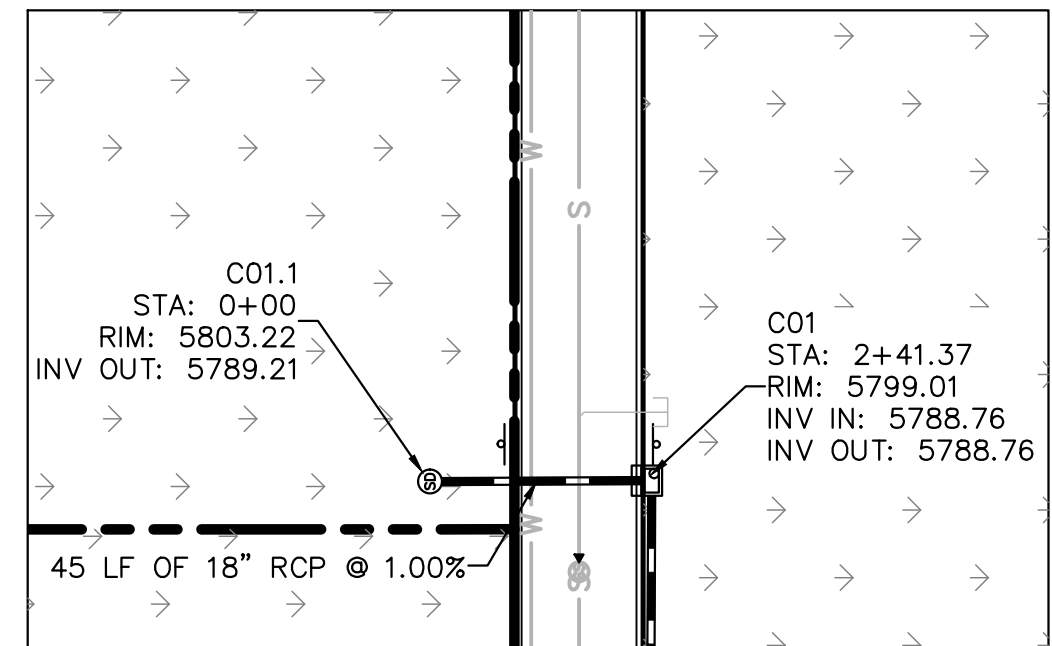
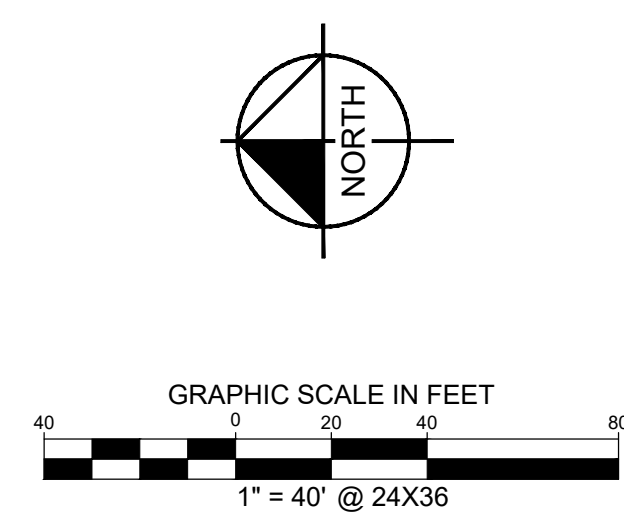






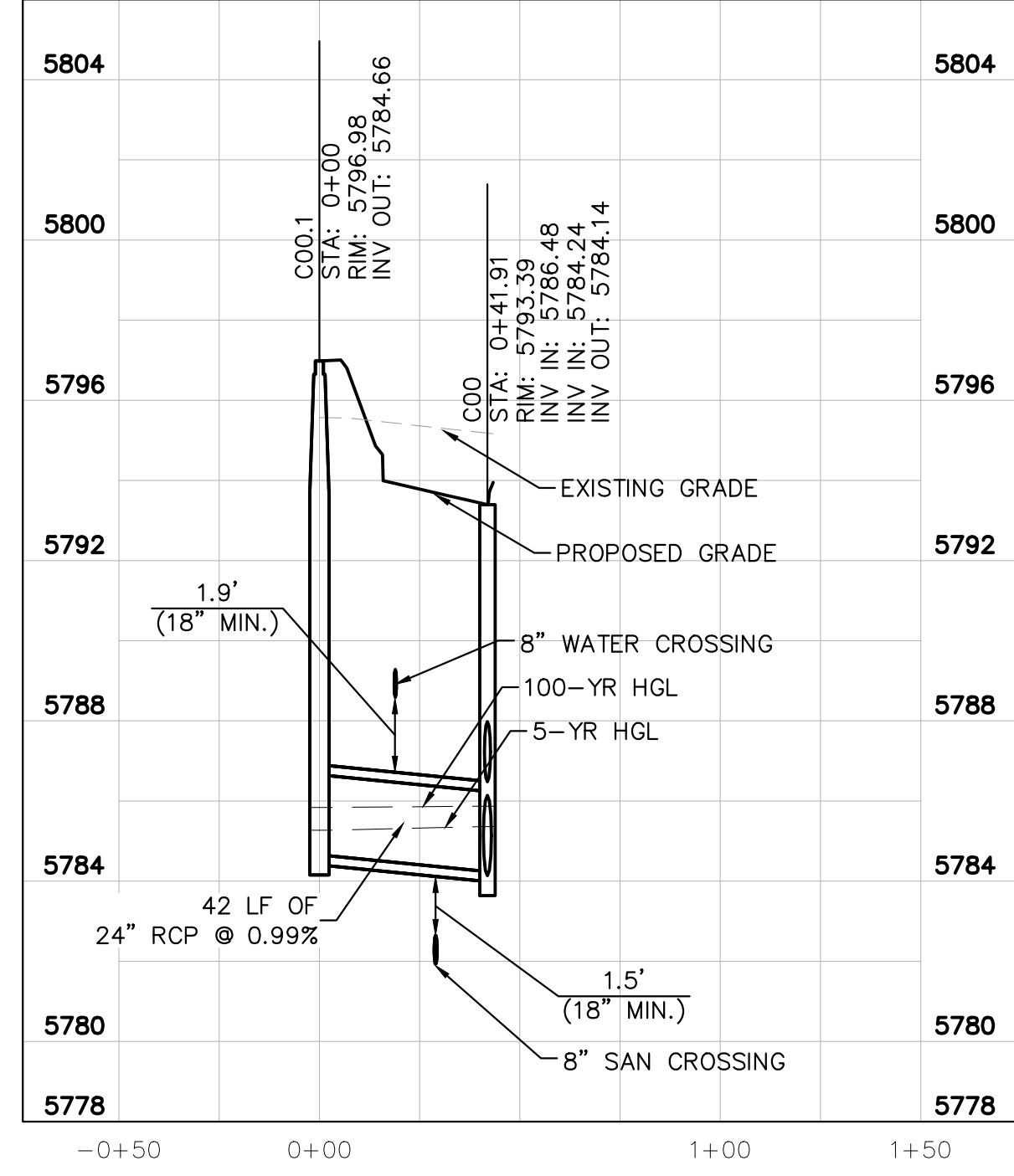
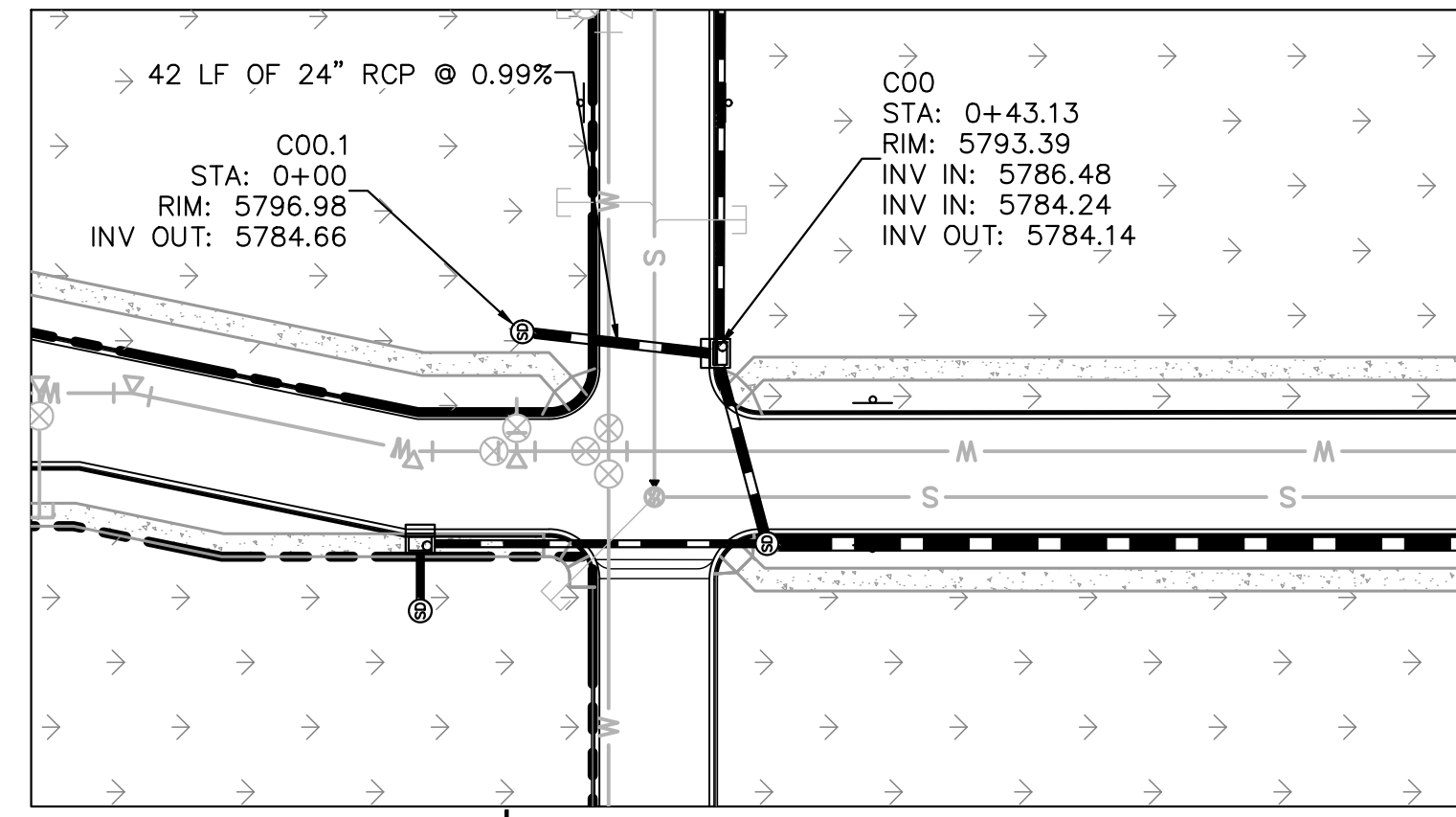


K:\DEN\_Civil\096502001 - Mixed Use Parker Rd\VCADD\PlanSheets\096502001S1.dwg - Kasprzak, Jack 10/8/2019 10:57 AM  
 30% FINAL REVIEW WITH THE CONTRACTOR FOR CONSTRUCTION AND APPROVAL OF THE TOWN OF PARKER. THE CONTRACTOR SHALL BE HELD RESPONSIBLE TO MAKE ANY AND ALL NECESSARY REVISIONS TO THE DOCUMENT WITHOUT NEED FOR FURTHER NOTIFICATION AND APPROVAL BY KIMLEY-HORN AND ASSOCIATES, INC. SHALL BE HELD RESPONSIBLE TO MAKE ANY AND ALL NECESSARY REVISIONS TO THE DOCUMENT WITHOUT NEED FOR FURTHER NOTIFICATION AND APPROVAL BY KIMLEY-HORN AND ASSOCIATES, INC.



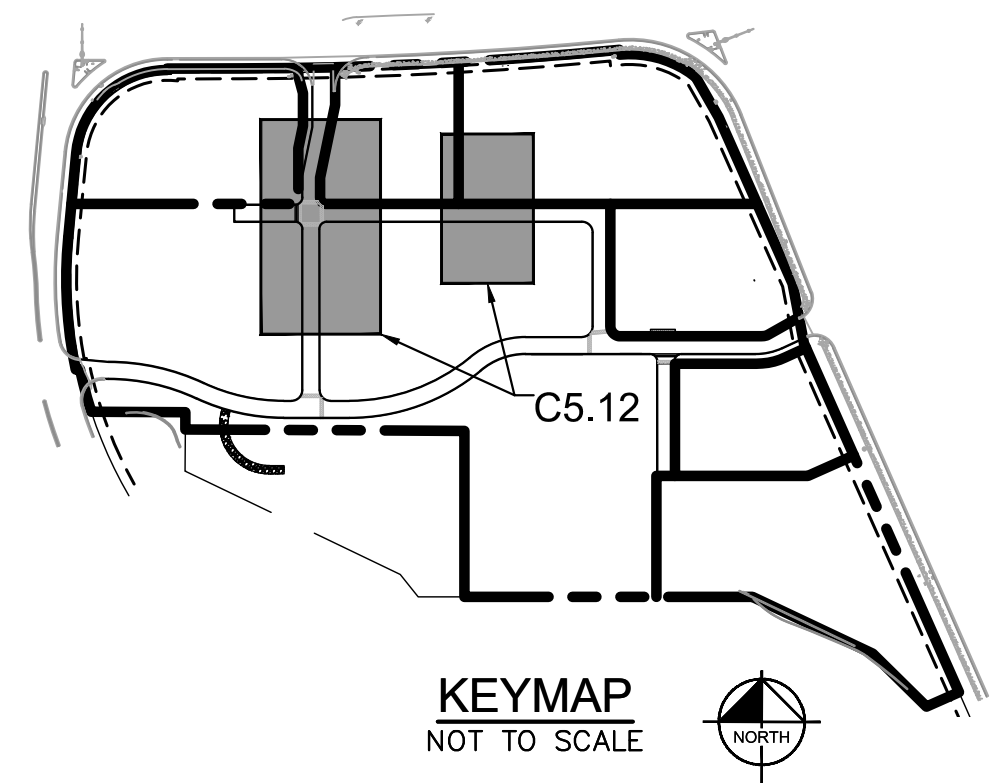
STORM LATERAL C.2 PROFILE  
[STA 0+00 TO 1+00]

HORIZONTAL SCALE: 1"=40'  
VERTICAL SCALE: 1"=4'



STORM LATERAL C.1 PROFILE  
[STA 0+00 TO 1+00]

HORIZONTAL SCALE: 1"=40'  
VERTICAL SCALE: 1"=4'



**LEGEND**  
 - - - - - PROPERTY LINE  
 --- PROPOSED STORM SEWER  
 [Symbol] PROPOSED STORM INLET  
 [Symbol] PROPOSED STORM MANHOLE

STRUCTURE NAME:	DESCRIPTION:	LOCATION:
A00	OUTLET	N: 11940.6071 E: 50137.5692
A01	TYPE R 10' INLET	N: 12000.1427 E: 50137.5726
A02	TYPE R MODIFIED INLET	N: 12044.3094 E: 50137.5726
A03	5' DIA MH	N: 12273.1682 E: 50135.4060
A04	TYPE R 5' INLET	N: 12348.8235 E: 50137.5726
A05	5' DIA MH	N: 12348.8235 E: 50120.7393
B00	TYPE R 10' INLET	N: 12026.9293 E: 49987.6006
B01	5' DIA MH WITH GRATE LID	N: 12075.0969 E: 49987.5740
B02	5' DIA MH WITH GRATE LID	N: 12044.1939 E: 50178.4126
B03	TYPE R 5' INLET	N: 12046.5109 E: 50366.5611
B04	5' DIA MH	N: 12102.1929 E: 50421.7791
B05	TYPE R 5' INLET	N: 12092.1007 E: 50606.3725
B05.1	5' DIA MH WITH GRATE LID	N: 12133.6552 E: 50606.5543
B06	5' DIA MH	N: 12071.7851 E: 50650.2930
B07	5' DIA MH	N: 11963.3147 E: 50650.2930
B07.1	5' DIA MH WITH GRATE LID	N: 11963.3062 E: 50685.9988
B08	TYPE R 10' INLET	N: 11907.6200 E: 50652.4644
B08.1	5' DIA MH WITH GRATE LID	N: 11907.6120 E: 50685.9988
C00	TYPE R 5' INLET	N: 12284.8966 E: 50176.9060
C00.1	5' DIA MH WITH GRATE LID	N: 12326.5470 E: 50181.6014
C01	TYPE R 5' MANHOLE	N: 12284.2299 E: 50375.1453
C01.1	5' DIA MH WITH GRATE LID	N: 12328.8687 E: 50374.9646
D00	OUTLET	N: 11849.1557 E: 50334.9577
D01	5' DIA MH WITH GRATE LID	N: 11849.2713 E: 50430.9191

THE TOWN OF PARKER REVIEW CONSTITUTES GENERAL COMPLIANCE WITH THE TOWN'S STANDARDS AND APPROVED VARIANCES, SUBJECT TO THESE PLANS BEING STAMPED, SIGNED, AND DATED BY THE PROFESSIONAL ENGINEER OF RECORD. REVIEW BY THE TOWN DOES NOT CONSTITUTE APPROVAL OF THE PLAN DESIGN OR ACCURACY AND CORRECTNESS OF ENGINEERING CALCULATIONS. ERRORS IN THE DESIGN OR CALCULATIONS REMAIN THE RESPONSIBILITY OF REGISTERED PROFESSIONAL ENGINEER WHOSE STAMP AND SIGNATURE ARE AFFIXED TO THIS DOCUMENT.

THIS REVIEW DOES NOT CONSTITUTE APPROVAL OF ANY PRIVATE ON-SITE IMPROVEMENTS WHICH MAY BE SHOWN. CONSTRUCTION CANNOT COMMENCE UNTIL ALL REQUIRED DRAINAGE/TRAFFIC REPORT(S), FINAL DEVELOPMENT PLAN(S), SPECIAL REVIEW(S), GRADING PERMIT, AND/OR OTHER PERMITS ARE COMPLETE, APPROVED AND ON FILE WITH THE TOWN OF PARKER.

TOWN OF PARKER, DIRECTOR OF ENGINEERING \_\_\_\_\_ DATE \_\_\_\_\_



NO.	REVISION	BY	DATE	APPR

**Kimley»Horn**  
 2020 KIMLEY-HORN AND ASSOCIATES, INC.  
 4582 South Ulster Street, Suite 1500  
 Denver, Colorado 80237 (303) 228-2300

DESIGNED BY: DLS  
 DRAWN BY: ECZ  
 CHECKED BY: DLS  
 DATE: 03/11/20

PARKER & PINE MINOR DEVELOPMENT FILING NO. 1  
 PARKER, CO  
 CONSTRUCTION DOCUMENTS  
**STORM-C LATERALS PLAN AND PROFILE**

PRELIMINARY  
 FOR REVIEW ONLY  
 NOT FOR  
 CONSTRUCTION  
**Kimley»Horn**  
 Kimley-Horn and Associates, Inc.

PROJECT NO.  
096502001  
 DRAWING NAME  
096502001S1  
**C5.12**

K:\DEN\_Civil\096502001 - Mixed Use Parker Rd\CADD\PlanSheets\096502001P-W-DT.dwg - Kaspizak, Jack 10/8/2019 10:57 AM

**GENERAL NOTES**

- SINCE ALL PIPE ENTRIES INTO THE BASE ARE VARIABLE, THE DIMENSIONS SHOWN ARE TYPICAL ACTUAL DIMENSIONS AND QUANTITIES FOR CONCRETE AND REINFORCEMENT SHALL BE AS REQUIRED IN THE WORK.
- THE PRECAST FLAT TOP MAY BE USED ON ANY MANHOLE, THE ECCENTRIC CONE MAY BE USED WHEN THE MANHOLE TOP HEIGHT IS AT LEAST 8 FT.
- THE MANHOLE RING FRAME SHALL BE SET IN A BED OF GROUT. THE FRAME SHALL BE SURMOUNTED WITH A CURVED GROUT IN UNPAVED AREA OR A CONCRETE COLLAR IN PAVED AREA. SEE DETAILS ON SHEETS 2 AND 3.
- DESIGN OF BOX BASE IS BASED ON STRAIGHT RUNS OF PIPE OR CHANGE IN DIRECTION OF LESS THAN 45°. SPECIAL DESIGN IS REQUIRED FOR 45° OR GREATER.
- PRECAST MANHOLES AND REINFORCEMENT SHALL CONFORM TO AASHTO M 298 (FORM C 476).
- CAST-IN-PLACE MANHOLES SHALL BE CLASS B CONCRETE. STOPS SHALL BE REQUIRED WHEN THE MANHOLE DEPTH EXCEEDS 3 FT. 6 IN. AND SHALL CONFORM TO AASHTO M 298.
- ALL REINFORCING STEEL SHALL BE GRADE 60 AND PROTECTIVE VERTICAL STEEL SHALL BE PLACED AT CENTERLINE OF WALL. ALL BARS SHALL HAVE #2 IN MINIMUM CLEARANCE.
- ALL PIPE ENTRIES INTO THE BASE OF MANHOLE SHALL BE CONNECTED BY OPEN CHANNELIZATION ADAPTED FOR PIPE SIZES, SLOPE, SLOPE AND DIRECTION OF FLOW DETAILS SHOWN ARE TYPICAL FOR INSTALLATION WITH ALL INVERTS OF SAME RELATIVE ELEVATION FOR EXCESSIVE ELEVATION DIFFERENCE BETWEEN INVERTS SPECIAL ASSOCIATED DETAILS WILL BE SHOWN IN THE PLANS.
- FLOW CHANNELS AND INVERTS SHALL BE FORMED BY SHIPING WITH CLASS B CONCRETE OR APPROVED GROUT.
- STAB-CUTS SHALL EXTEND 2 FT. MINIMUM BEYOND OUTSIDE WALL SURFACE OF MANHOLE AND BE SATISFACTORILY FINISHED.
- THE SLOPE OF THE MANHOLE COVER SHALL MATCH THE ROADWAY PROFILE AND CROSS SLOPE.
- WHEN FINAL GRADE IS PAVEMENT SURFACE, RECESS MANHOLE RING AND COVER 1/4" MIN. TO 1/2" MAX.

**QUANTITIES FOR CONCRETE MANHOLE BOX BASE**

MARK	SIZE	TYPE	WT. (LBS.)	NO.	FORMULA
401	4	I	0.688	8	BAR LENGTH = 32' + 2W + L.D.
402	4	III	0.688	8	BAR LENGTH = 10.4 + 2W
501	5	I	1.043	4	BAR LENGTH = 24' + L.D. + 2W
502	5	II	1.043	4	BAR LENGTH = 4.0 + 2W + L.D.
503	5	III	1.043	4	BAR LENGTH = 32' + 2W + L.D.
504	5	IV	1.043	4	BAR LENGTH = 24' + L.D. + 2W
100	11	I	5.333	2	BAR LENGTH = 21' + L.D. + 2W
101	11	I	5.333	2	BAR LENGTH = 21' + L.D. + 2W
102	11	I	5.333	2	BAR LENGTH = 21' + L.D. + 2W
103	11	I	5.333	2	BAR LENGTH = 21' + L.D. + 2W

**PRECAST MANHOLE BASES NOTES:**

- THE BASE SLAB SHALL BE FORMED MONOLITHICALLY WITH BOTTOM RISER SECTION.
- PRECAST MANHOLE BASES SHALL FIT THE CONDITIONS AND LOCATIONS FOR WHICH THEY ARE INTENDED WITHOUT ANY FIELD MODIFICATIONS. ANY MANHOLE BASE WHICH REQUIRES FIELD CUTTING OR MODIFICATION TO FIT THE LOCATIONS INTENDED WILL BE REJECTED BY THE ENGINEER AND REMOVED AND REPLACED BY THE CONTRACTOR AT NO COST TO THE DEPARTMENT.
- PRECAST MANHOLE BASES SHALL BE RECESSED ON AN APPROVED GRANULAR BEDDING MATERIAL AS SHOWN ABOVE.

**T-BASE MANHOLES NOTES**

- THE T-BASE SECTION SHALL BE SHOP-FABRICATED FOR DELIVERY TO THE CONSTRUCTION SITE AS A COMPLETE UNIT.
- THESE DETAILS SHOW ONLY THE CONCEPTUAL AND STANDARD DIMENSIONAL REQUIREMENTS FOR APPROVAL. PRIOR TO FABRICATION, THE CONTRACTOR SHALL SUBMIT DETAILED SHOP DRAWINGS FOR APPROVAL. THE DETAILS SHOWN HEREIN APPLY ONLY TO 48 IN. AND GREATER DIAMETER PIPES.
- EXCEPT FOR CLASS OF PIPE, SPECIFICATIONS FOR THE MANHOLE SHALL BE THE SAME AS THOSE REQUIRED FOR THE ADJOINING PIPE.
- THE T-BASE SECTION SHALL MAINTAIN ITS INTERNAL SHAPE AND FLOW AREA GROUTING OR FILLING SHALL BE APPLIED SO AS TO NOT DISTURB THE NORMAL FLOW OR REDUCE THE AREA.

**GENERAL NOTES**

- ON ROADWAY CURVES WITH A RADIUS OF 1500 FT. OR LESS, CURBS AND GUTTERS ARE TO BE PLACED ON THE ARC OF THE CURVE. LATEST STANDARD NOTES ON THIS SUBJECT SHALL BE USED WHEN THE CURVE RADIUS IS GREATER THAN 1500 FT.
- CONCRETE SHALL BE CLASS B.
- PROFILE GRADE OF CURBS AND GUTTERS SHALL BE LOCATED AT THE FLOW LINE.
- CURB TYPE A AND B MAY BE USED IN CASE OF CURB AND GUTTER TYPE 2 SECTIONS B AND C UNLESS OTHERWISE SPECIFIED ON THE PLANS.
- GUTTER CROSS SLOPES MAY BE ADJUSTED TO FACILITATE DRAINAGE FOR PROFILE GRADES AS SHOWN ON THE PLANS.
- THICKNESS OF CURB AND GUTTER SECTION SHALL MATCH CONCRETE PAVEMENT THICKNESS AS SHOWN ON THE PLANS. CURB AND GUTTER SHALL BE CLASS F CONCRETE IF PLACED MONOLITHICALLY WITH CONCRETE PAVEMENT.
- RESERVE SIDEWALK THICKNESS IS 6 IN. AT LOCATIONS SHOWN ON THE PLANS.
- MINIMUM SIDEWALK WIDTH IS 4 FT.

**MANHOLES**

STANDARD PLAN NO. M-604-20

Sheet No. 1 of 3

Colorado Department of Transportation  
4201 East Arkansas Avenue  
Denver, Colorado 80222  
Phone: (303) 757-9822  
Fax: (303) 757-9820  
Project Development Branch DD/LTA

**CURB, GUTTERS, AND SIDEWALKS**

STANDARD PLAN NO. M-609-1

Sheet No. 1 of 4

Colorado Department of Transportation  
4201 East Arkansas Avenue  
Denver, Colorado 80222  
Phone: (303) 757-9822  
Fax: (303) 757-9820  
Project Development Branch DLM/LTA



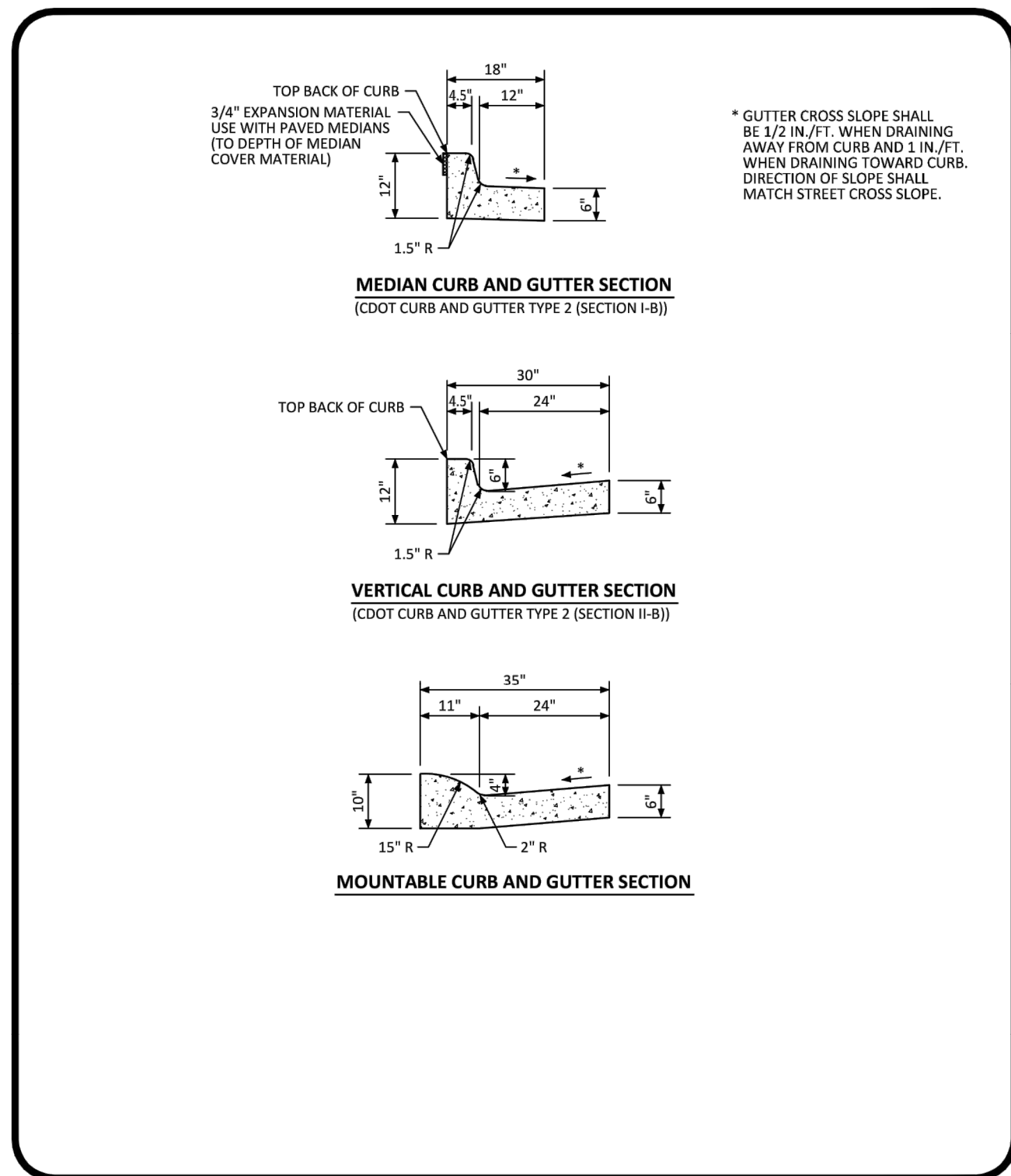
**Kimley»Horn**  
 2020 KIMLEY-HORN AND ASSOCIATES, INC.  
 4582 South Ulster Street, Suite 1500  
 Denver, Colorado 80237 (303) 228-2300

DESIGNED BY: DLS  
 DRAWN BY: ECZ  
 CHECKED BY: DLS  
 DATE: 03/11/20

PARKER & PINE MINOR DEVELOPMENT FILING NO. 1  
 PARKER, CO  
 CONSTRUCTION DOCUMENTS  
 DETAILS

NO.	REVISION	BY	DATE	APPROV

PRELIMINARY  
 FOR REVIEW ONLY  
 NOT FOR  
 CONSTRUCTION  
**Kimley»Horn**  
 Kimley-Horn and Associates, Inc.  
 PROJECT NO. 096502001  
 DRAWING NAME 096502001P-W-DT  
**C6.0**

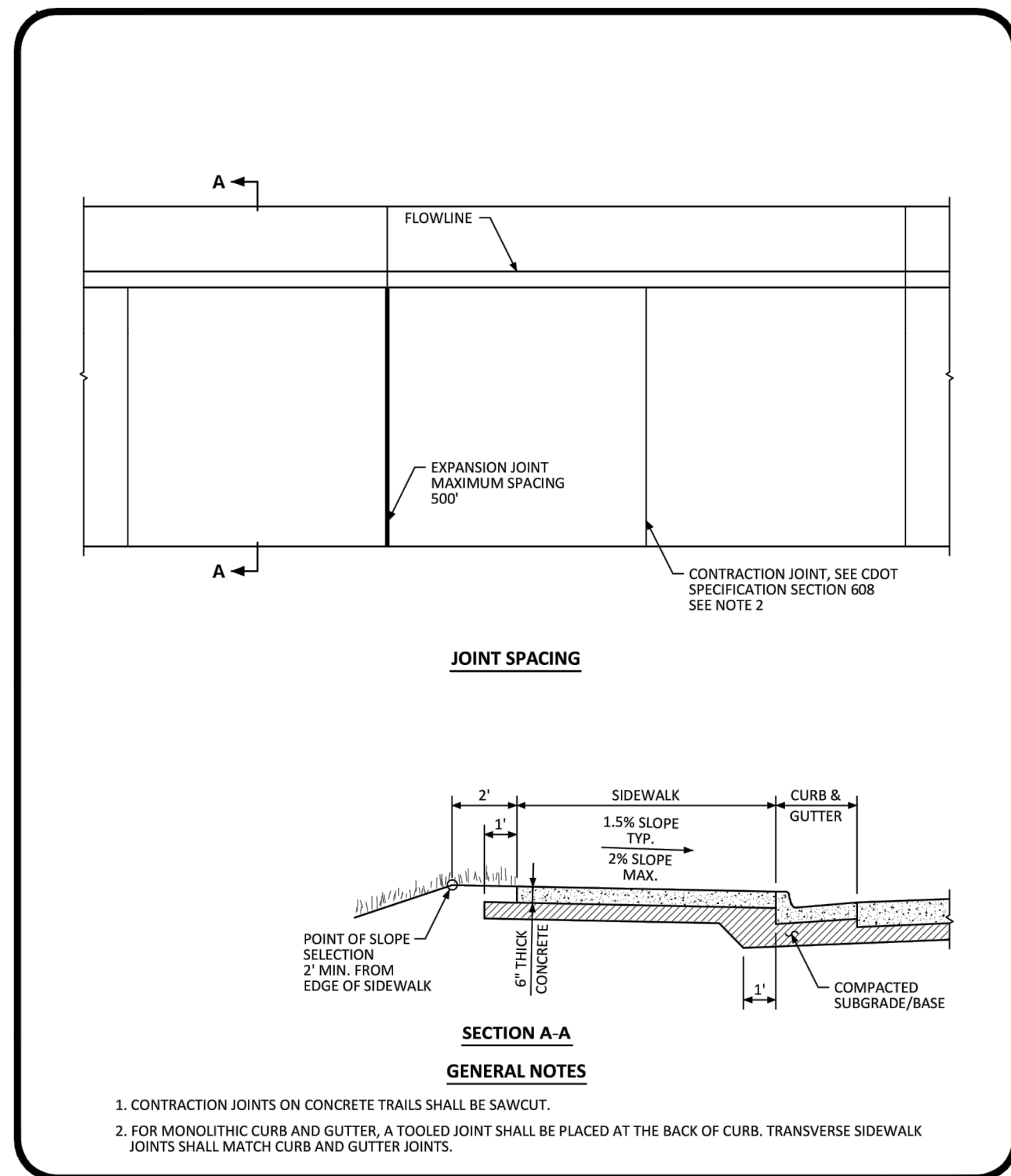


NO CHANGES ARE TO BE MADE TO THIS DRAWING WITHOUT WRITTEN PERMISSION OF THE TOWN OF PARKER.

**CURB, GUTTER, AND SIDEWALK SECTIONS STANDARD DETAIL**

DATE AUGUST 2014

DETAIL 3 OF 1

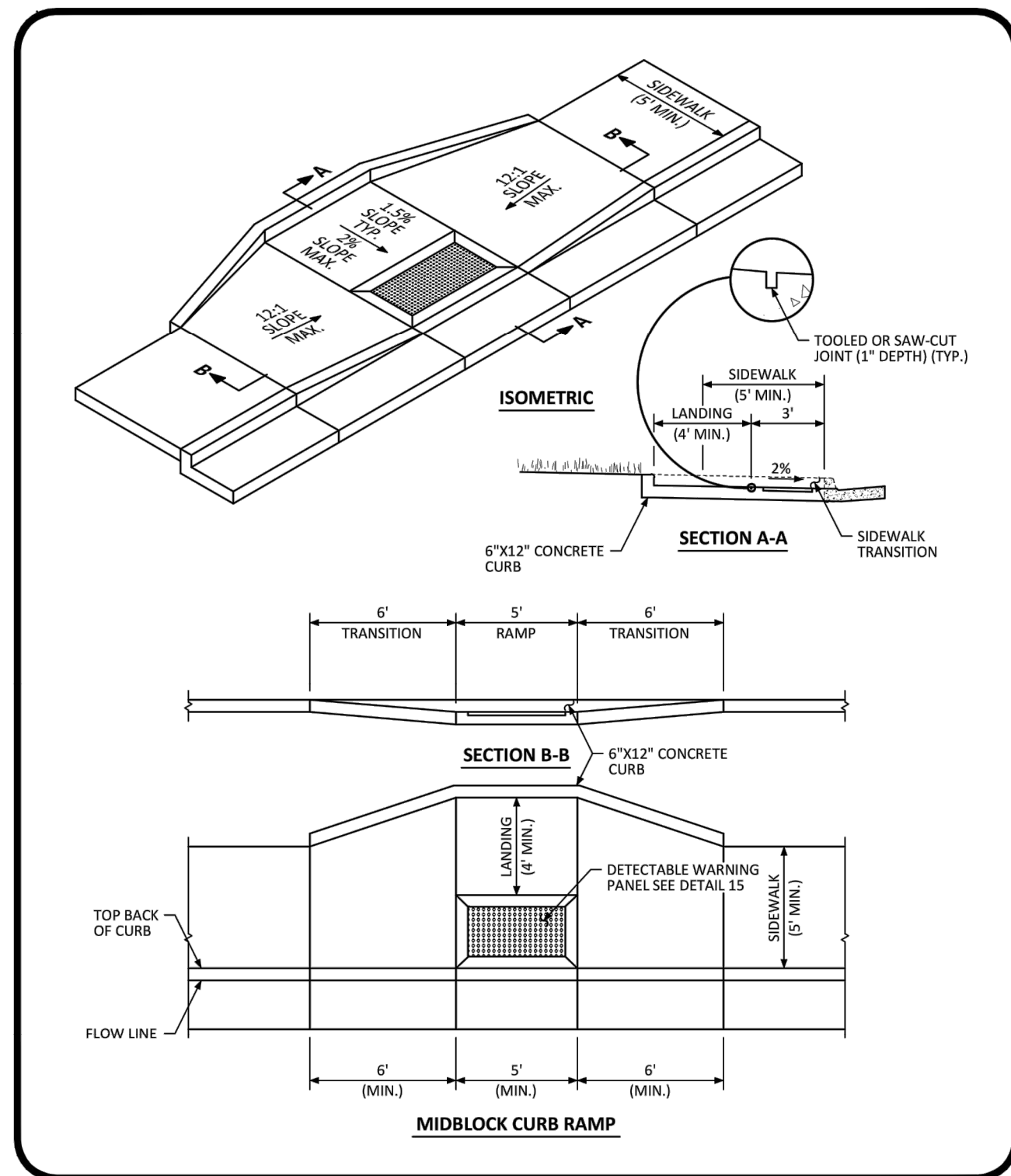


NO CHANGES ARE TO BE MADE TO THIS DRAWING WITHOUT WRITTEN PERMISSION OF THE TOWN OF PARKER.

**ATTACHED SIDEWALK STANDARD DETAIL**

DATE AUGUST 2014

DETAIL 4 OF 2

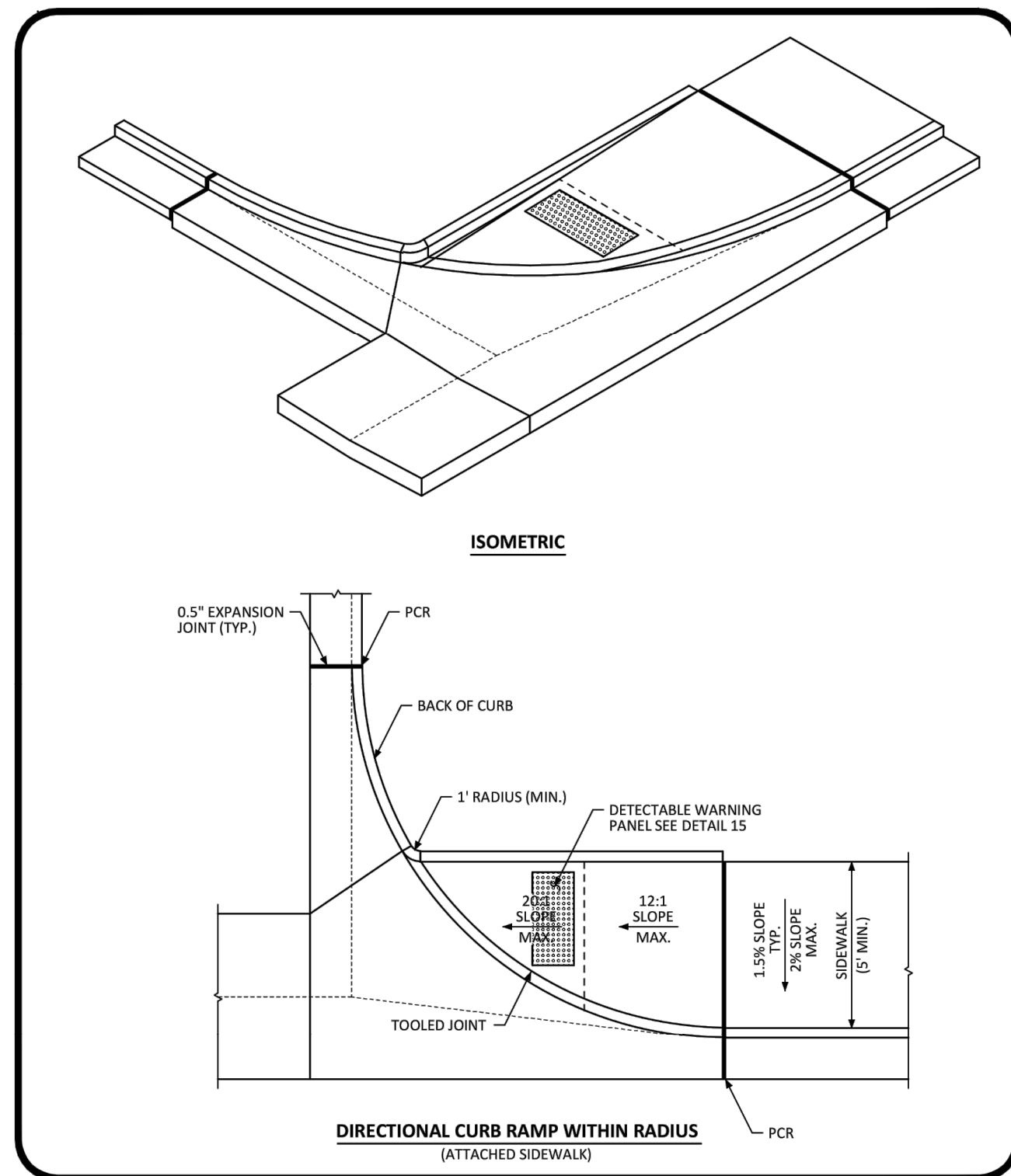


NO CHANGES ARE TO BE MADE TO THIS DRAWING WITHOUT WRITTEN PERMISSION OF THE TOWN OF PARKER.

**MIDBLOCK CURB RAMP LAYOUT STANDARD DETAIL**

DATE AUGUST 2014

DETAIL 17 OF 2

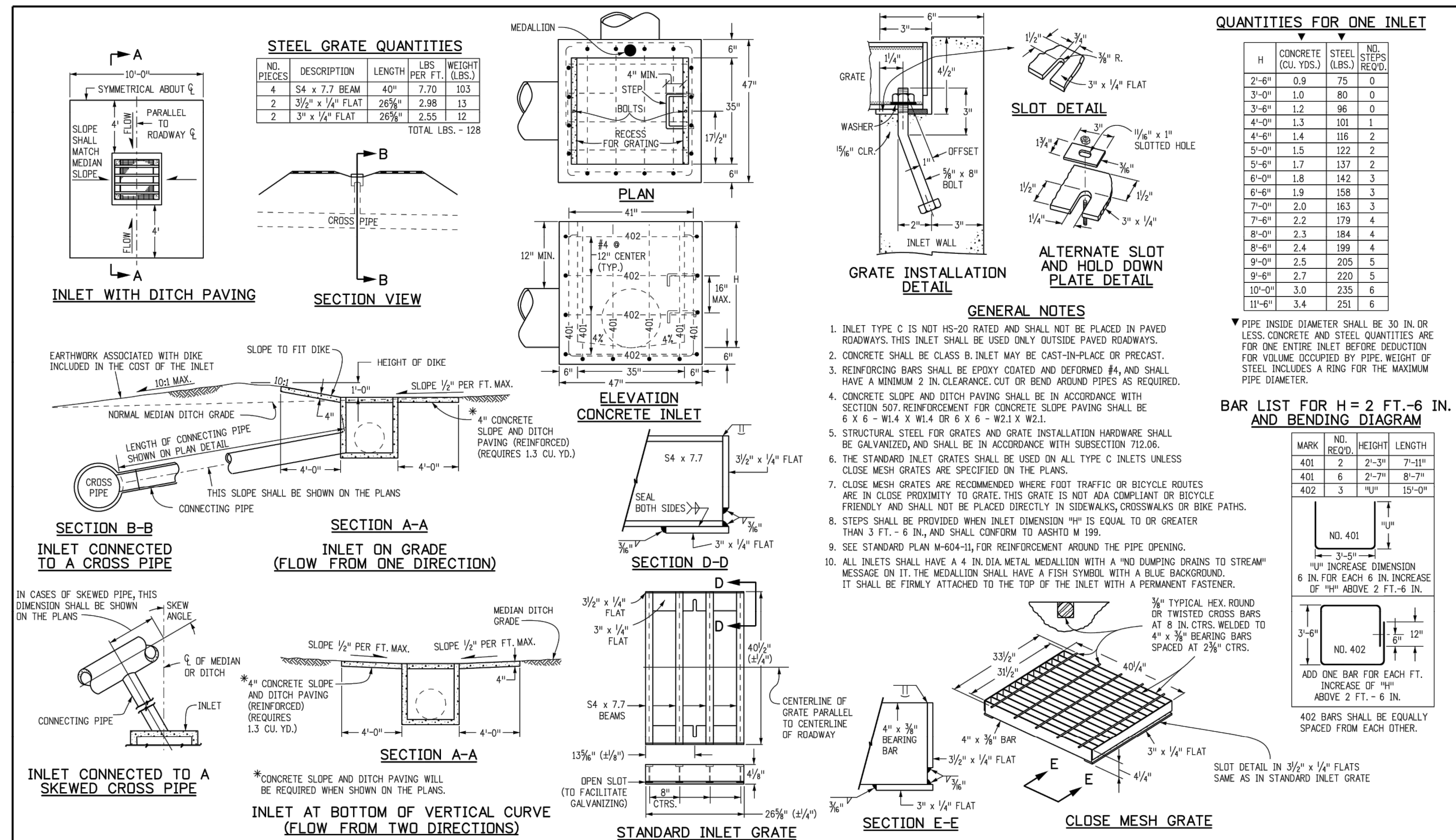


NO CHANGES ARE TO BE MADE TO THIS DRAWING WITHOUT WRITTEN PERMISSION OF THE TOWN OF PARKER.

**DIRECTIONAL CURB RAMP WITHIN RADIUS LAYOUT STANDARD DETAIL**

DATE AUGUST 2014

DETAIL 18 OF 2

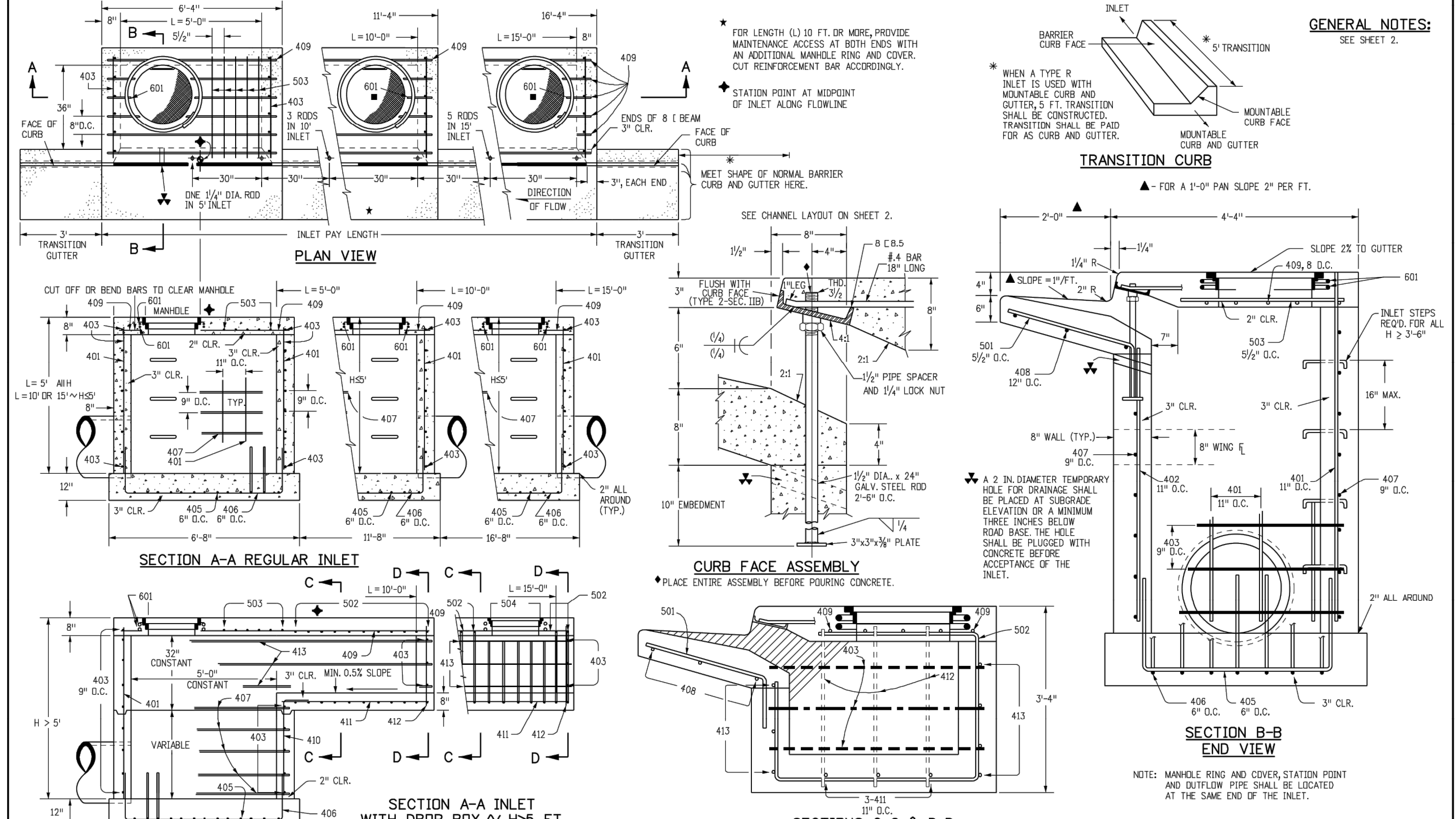


**INLET, TYPE C STANDARD PLAN NO. M-604-10**

Sheet No. 1 of 1

Colorado Department of Transportation  
4201 East Arkansas Avenue  
Denver, Colorado 80222  
Phone: (303) 757-9083  
Fax: (303) 757-9020

Project Development Branch DD/LTA Issued By: Project Development Branch July 4, 2012



**CURB INLET TYPE R STANDARD PLAN NO. M-604-12**

Sheet No. 1 of 2

Colorado Department of Transportation  
4201 East Arkansas Avenue  
Denver, Colorado 80222  
Phone: (303) 757-9083  
Fax: (303) 757-9820

Project Development Branch DD/LTA Issued By: Project Development Branch July 4, 2012

K:\DEN\_Civil\09650201PW-01.dwg - Mixed Use Parker Rd\CADD\PlanSheets\09650201PW-01.dwg - Kaspizok, Jack 10/8/2019 10:57 AM

**Kimley»Horn**  
2020 KIMLEY-HORN AND ASSOCIATES, INC.  
4582 South Ulster Street, Suite 1500  
Denver, Colorado 80237 (303) 228-2300

DESIGNED BY: DLS  
DRAWN BY: ECZ  
CHECKED BY: DLS  
DATE: 03/11/20

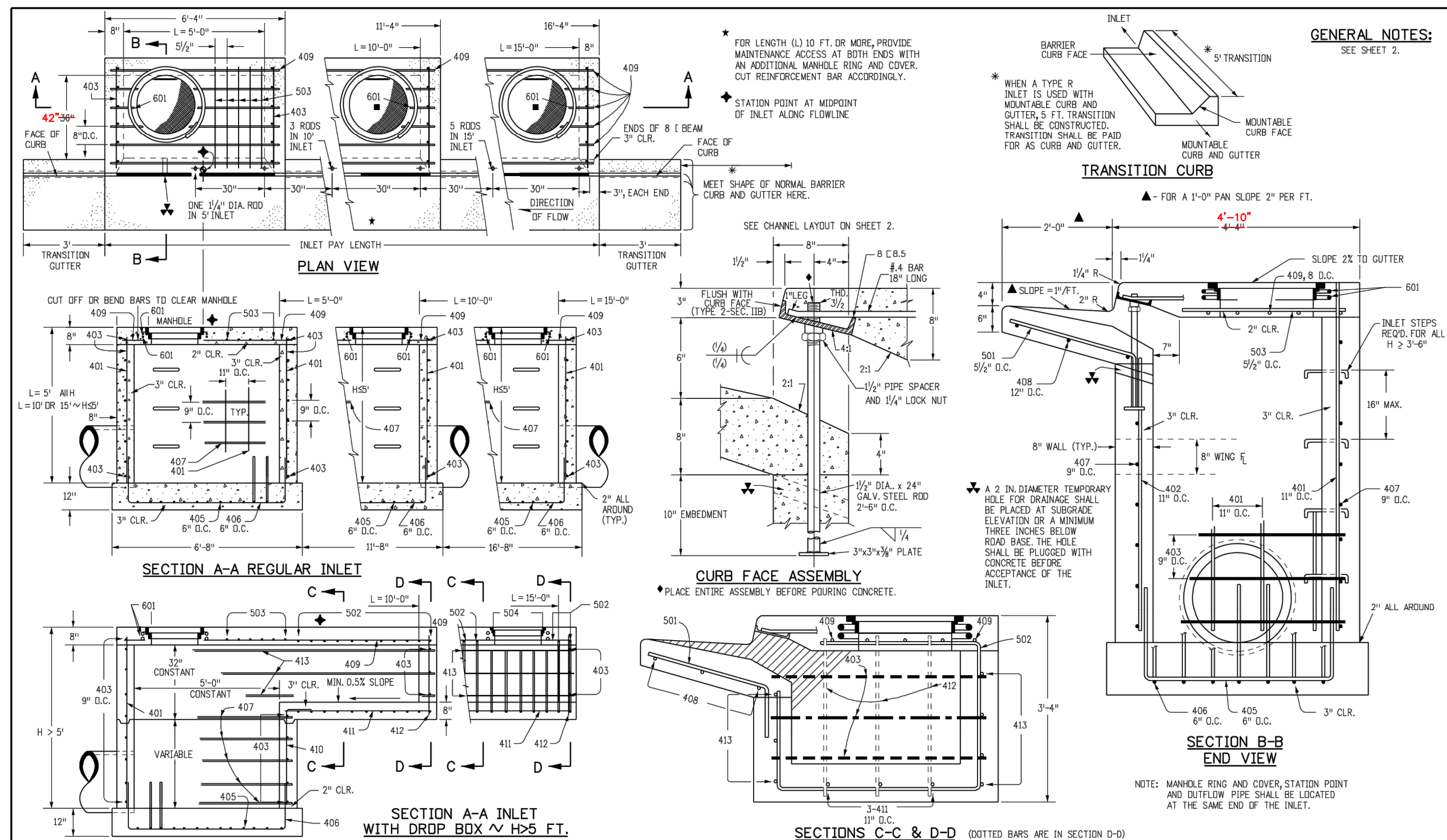
PARKER & PINE MINOR DEVELOPMENT FILING NO. 1  
PARKER, CO  
CONSTRUCTION DOCUMENTS  
DETAILS

PRELIMINARY  
FOR REVIEW ONLY  
NOT FOR CONSTRUCTION

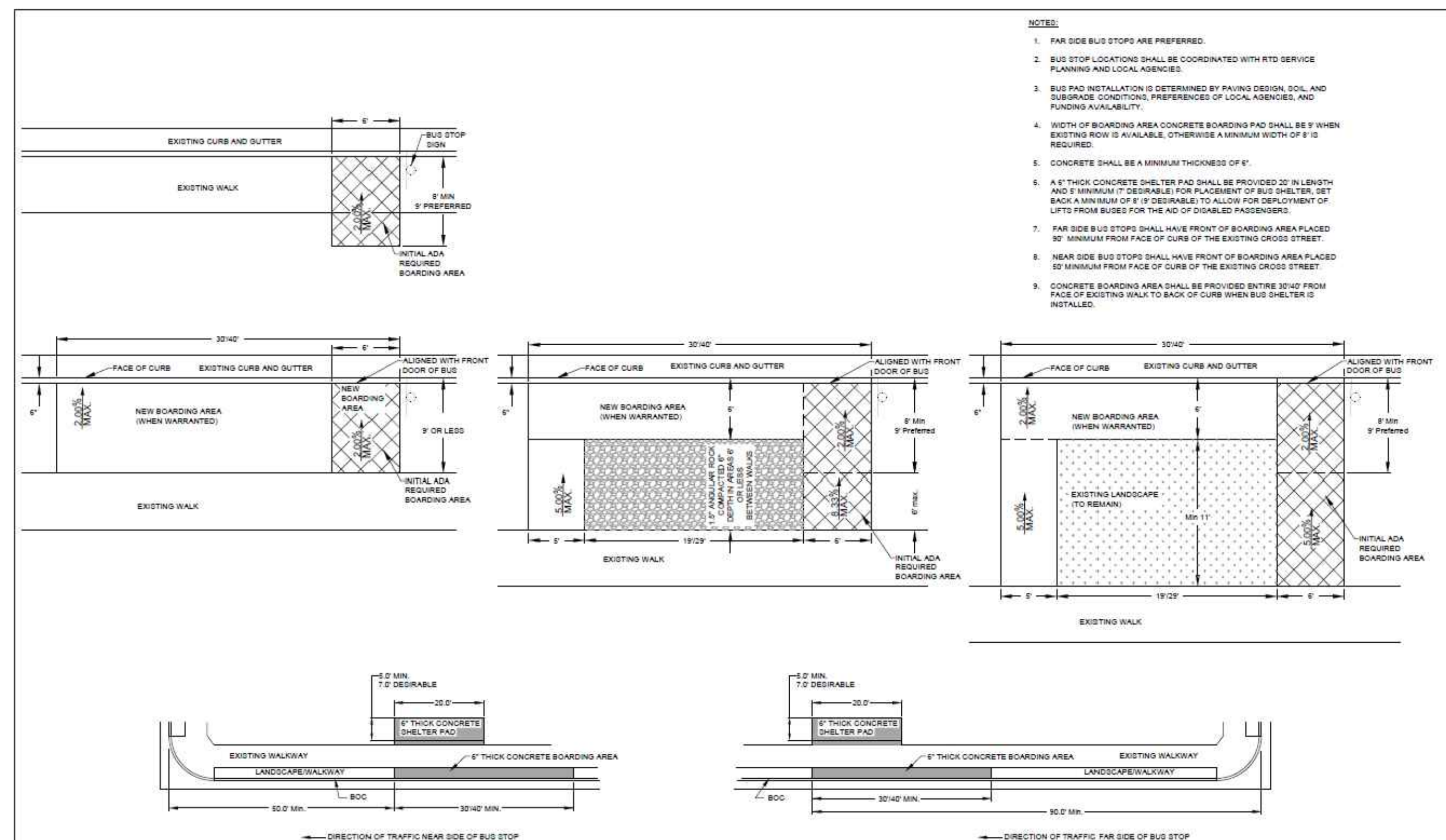
PROJECT NO. 096502001  
DRAWING NAME 096502001PW-DT  
C6.1

NO.	REVISION	BY	DATE	APPR



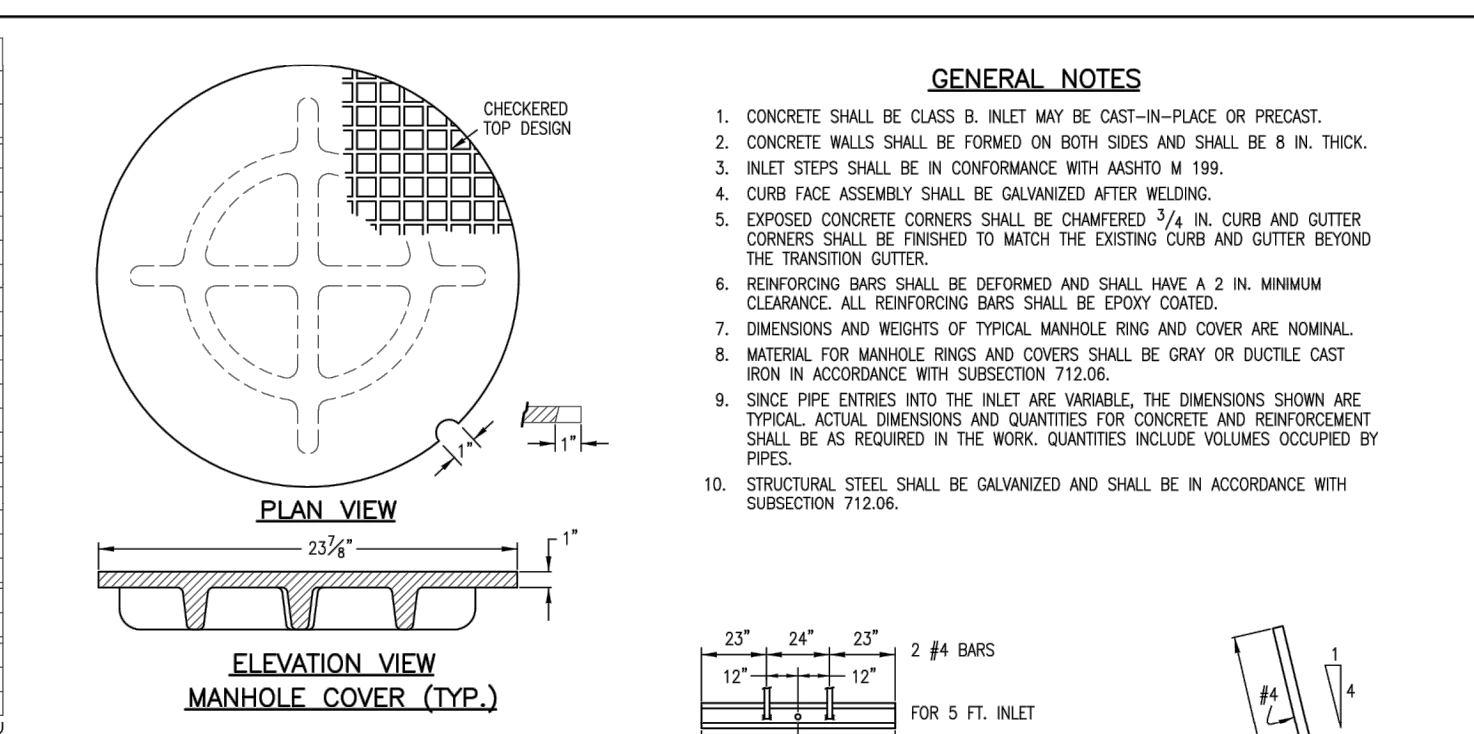


<b>Computer File Information</b>		<b>Sheet Revisions</b>		<b>Colorado Department of Transportation</b>		<b>STANDARD PLAN NO.</b>	
Creation Date: 07/04/12	Initials: DD	Date:	Comments:	2201 East Arkansas Avenue	Denver, Colorado 80222	<b>CURB INLET TYPE R</b>	<b>M-604-12</b>
Last Modification Date: 07/04/12	Initials: LTA			Phone: (303) 757-9083	Fax: (303) 757-9820		
Full Path: www.coloradodot.info/business/designsupport				Project Development Branch	DD/LTA	Issued By: Project Development Branch July 4, 2012	Sheet No. 1 of 2
Drawing File Name: 6040120102.dwg							
CAD Ver: MicroStation V8	Scale: Not to Scale	Units: English					



<b>Computer File Information</b>		<b>Sheet Revisions</b>		<b>Colorado Department of Transportation</b>		<b>STANDARD PLAN NO.</b>	
Creation Date: 07/04/12	Initials: DD	Date:	Comments:	2201 East Arkansas Avenue	Denver, Colorado 80222	<b>CURB INLET TYPE R</b>	<b>M-604-12</b>
Last Modification Date: 07/04/12	Initials: LTA			Phone: (303) 757-9083	Fax: (303) 757-9820		
Full Path: www.coloradodot.info/business/designsupport				Project Development Branch	DD/LTA	Issued By: Project Development Branch July 4, 2012	Sheet No. 1 of 2
Drawing File Name: 6040120102.dwg							
CAD Ver: MicroStation V8	Scale: Not to Scale	Units: English					

MARK	BAR # OR SIZE	O.C. SPACING	TYPE	INLETS: H ≤ 5 FT.					
				L = 5 FT.		L = 10 FT.		L = 15 FT.	
				NO. REQ'D	LENGTH	NO. REQ'D	LENGTH	NO. REQ'D	LENGTH
401	4	11"	II	15	7	21	7	21	7
402	4	11"	II	7	13	13	18	7	7
403	4	9"	II	7	13	13	18	7	7
405	4	6"	VI	11	6'-10"	21	6'-10"	31	6'-10"
406	4	6"	VI	7	6'-10"	7	6'-10"	7	6'-10"
407	4	9"	VI	7	6'-10"	7	6'-10"	7	6'-10"
408	4	12"	VI	3	6'-10"	3	6'-10"	3	6'-10"
409	4	8"	VI	6	6'-10"	6	6'-10"	6	6'-10"
410	4	11"	VI	3	6'-10"	3	6'-10"	3	6'-10"
411	4	11"	VI	3	6'-10"	3	6'-10"	3	6'-10"
412	4	11"	VI	3	6'-10"	3	6'-10"	3	6'-10"
413	4	9"	VI	3	6'-10"	3	6'-10"	3	6'-10"
414	4	9"	VI	3	6'-10"	3	6'-10"	3	6'-10"
501	5	5 1/2"	IV	11	3'-4"	22	3'-4"	33	3'-4"
502	5	5 1/2"	IV	7	3'-4"	13	3'-4"	11	3'-4"
503	5	5 1/2"	IV	5	3'-4"	16	3'-4"	27	3'-4"
504	5	5 1/2"	IV	3	3'-4"	16	3'-4"	6	3'-4"
601	6	2 1/2"	V	2	8'-10"	2	8'-10"	2	8'-10"
602	6	2 1/2"	V	1	8'-10"	1	8'-10"	1	8'-10"
603	6	2 1/2"	V	1	8'-10"	1	8'-10"	1	8'-10"



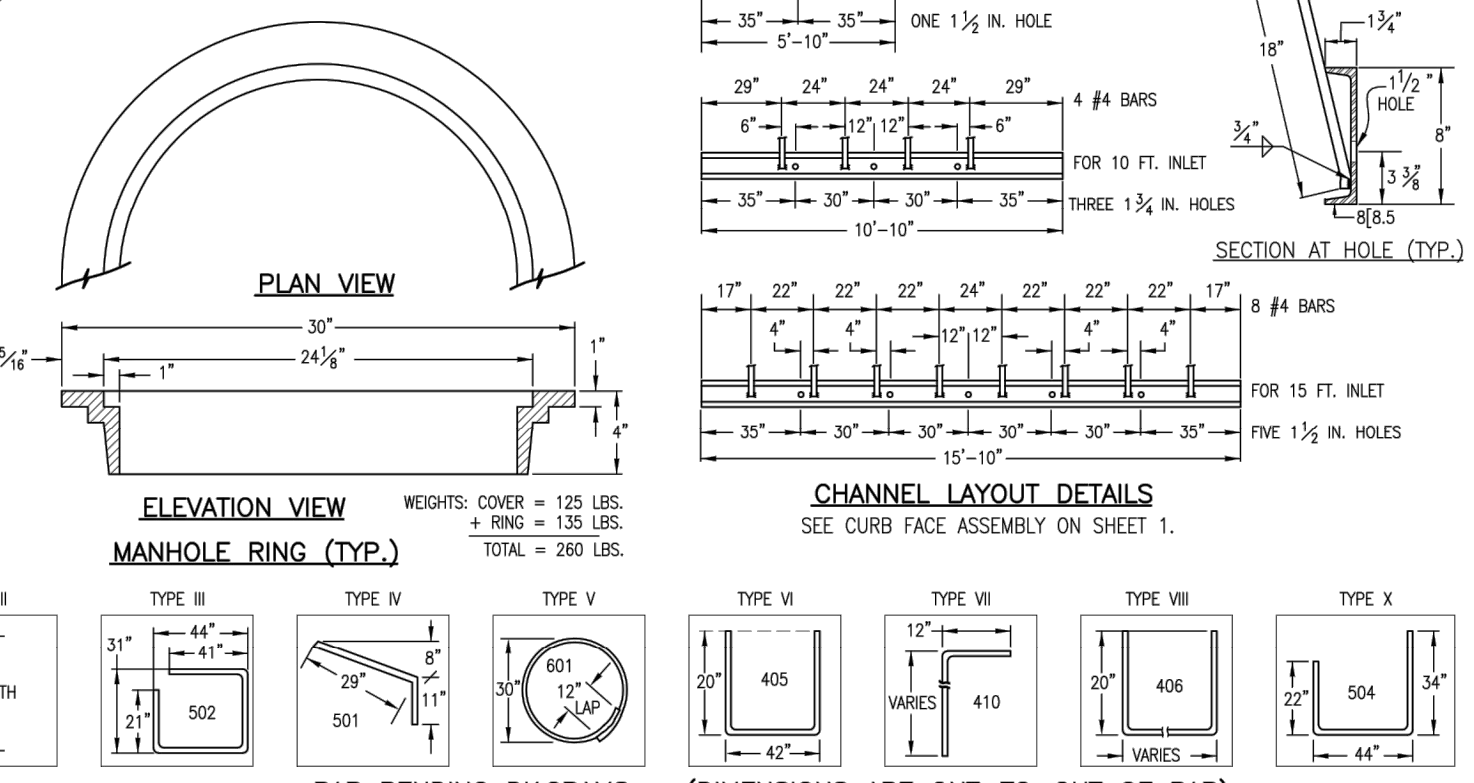
**TABLE ONE ~ BAR LIST FOR CURB INLETS, TYPE "R"**

INLET	LENGTH	REGULAR		DROP BOX		L = 5 FT.		L = 10 FT.		L = 15 FT.	
		NO. REQ'D	CONC. CU. YDS.	NO. REQ'D	CONC. CU. YDS.	NO. REQ'D	CONC. CU. YDS.	NO. REQ'D	CONC. CU. YDS.	NO. REQ'D	CONC. CU. YDS.
3'-0"	2'-6"	11	7	10	7	3.2	285	5.3	497	7.4	706
3'-6"	2'-2"	10	7	10	7	3.4	302	5.7	508	7.9	747
4'-0"	3'-8"	2	9	12	9	3.7	326	6.0	559	8.4	786
4'-6"	3'-2"	14	9	12	9	3.9	354	6.4	571	8.8	803
4'-6"	3'-8"	14	11	11	11	4.1	354	6.7	602	9.3	844
5'-0"	5'-2"	4	13	15	8	4.4	375	8.0	607	7.4	850
6'-0"	5'-8"	4	16	13	18	4.6	382	6.2	616	7.8	860
6'-6"	6'-2"	18	19	18	19	4.8	402	6.4	637	7.8	860
7'-0"	6'-8"	5	20	17	19	5.0	423	6.6	654	8.0	897
7'-6"	7'-2"	6	20	17	20	5.3	430	6.9	664	6.3	907
8'-0"	7'-8"	6	22	19	22	5.5	451	7.1	684	6.5	927
8'-6"	8'-2"	7	24	21	23	5.7	471	7.3	702	8.7	944
9'-0"	8'-8"	7	24	21	24	6.0	479	7.6	711	9.0	954
9'-6"	9'-2"	8	26	23	26	6.2	499	7.8	732	9.2	974
10'-0"	9'-8"	8	28	25	27	6.4	520	8.0	749	9.4	992
10'-6"	10'-2"	9	28	26	28	6.7	527	8.3	759	9.7	1001
11'-0"	10'-8"	9	30	27	30	6.9	547	8.5	779	9.9	1022

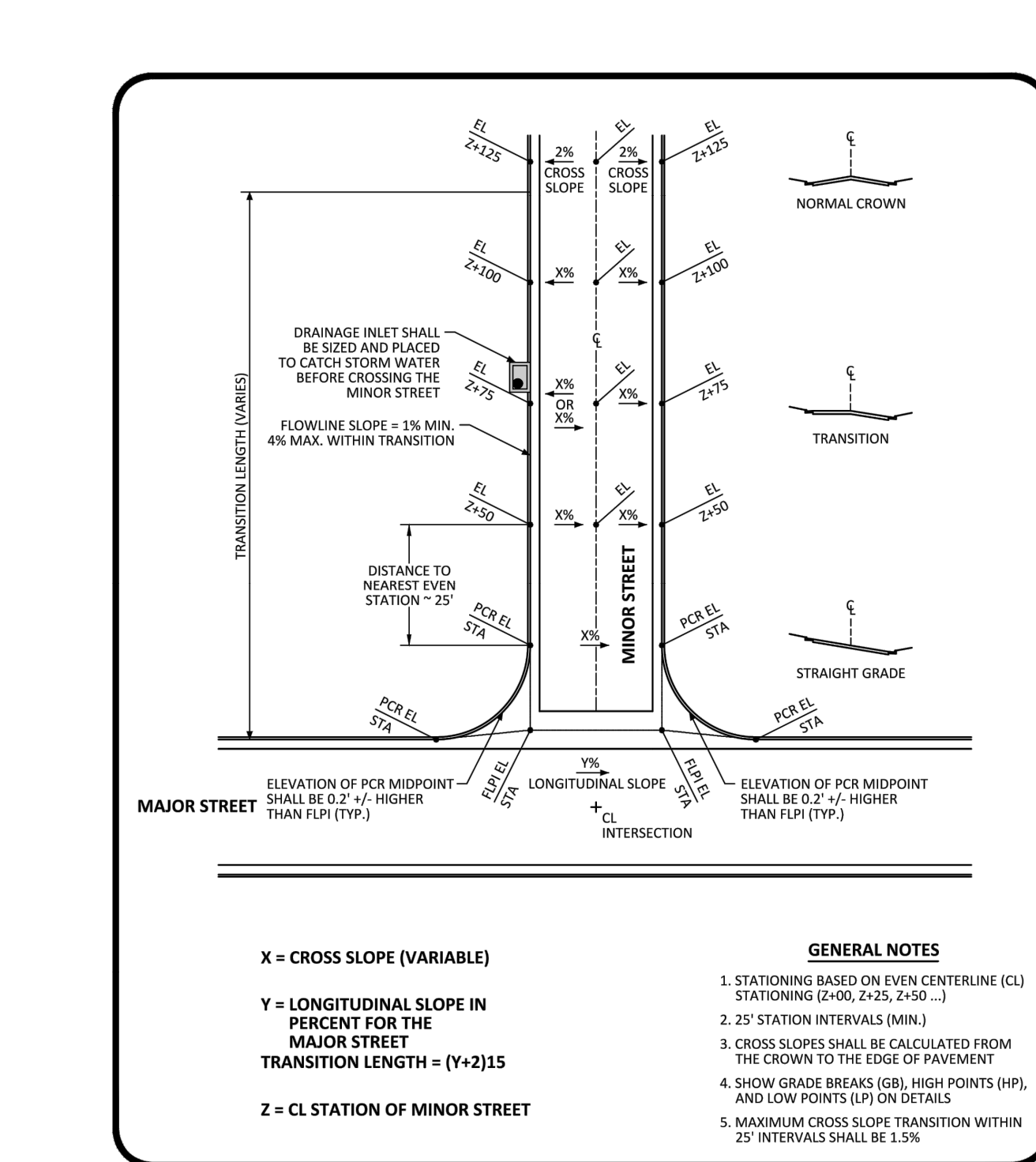
NOTES: FOR L=5 FT., L=10 FT., AND L=15 FT. REGULAR INLETS: TOTAL QUANTITIES NEEDED ARE OUTSIDE THE HEAVY BLACK LINE. DROP BOX INLETS: TOTAL QUANTITIES NEEDED ARE INSIDE THE HEAVY BLACK LINE. STEEL WEIGHTS DO NOT INCLUDE STRUCTURAL STEEL CHANNEL.

**TABLE TWO ~ BARS AND QUANTITIES VARIABLE WITH "H"**

TYPE	LENGTH	NO. REQ'D	WEIGHTS
TYPE I	3'-0"	11	125 LBS.
TYPE II	3'-6"	10	125 LBS.
TYPE III	4'-0"	2	135 LBS.
TYPE IV	4'-6"	14	125 LBS.
TYPE V	5'-0"	4	125 LBS.
TYPE VI	6'-0"	4	125 LBS.
TYPE VII	6'-6"	18	125 LBS.
TYPE VIII	7'-0"	6	125 LBS.
TYPE IX	7'-6"	6	125 LBS.
TYPE X	8'-0"	7	125 LBS.



<b>Computer File Information</b>		<b>Sheet Revisions</b>		<b>Colorado Department of Transportation</b>		<b>STANDARD PLAN NO.</b>	
Creation Date: 07/04/06	Initials: SRJ	Date:	Comments:	2201 East Arkansas Avenue	Denver, Colorado 80222	<b>CURB INLET TYPE R</b>	<b>M-604-12</b>
Last Modification Date: 07/04/06	Initials: LTA			Phone: (303) 757-9083	Fax: (303) 757-9820		
Full Path: www.dot.state.co.us/DesignSupport/				Project Development Branch	SRJ/LTA	Issued By: Project Development Branch on July 04, 2006	Sheet No. 2 of 2
Drawing File Name: 6040120202.dwg							
CAD Ver: MicroStation V8	Scale: Not to Scale	Units: English					



<b>PARKER</b> COLORADO	<b>INTERSECTION GRADING DETAIL</b> FOR CONSTRUCTION PLANS STANDARD DETAIL	DATE DECEMBER 2016	DETAIL <b>31</b> 1 OF 1
---------------------------	---	--------------------------	-------------------------------

NO.	REVISION	BY	DATE	APPROV

**Kimley»Horn**  
2020 KIMLEY-HORN AND ASSOCIATES, INC.  
4582 South Ulster Street, Suite 1500  
Denver, Colorado 80237 (303) 228-2300

DESIGNED BY: DLS  
DRAWN BY: ECZ  
CHECKED BY: DLS  
DATE: 03/11/20

PARKER & PINE MINOR DEVELOPMENT FILING NO. 1  
PARKER, CO  
CONSTRUCTION DOCUMENTS  
DETAILS

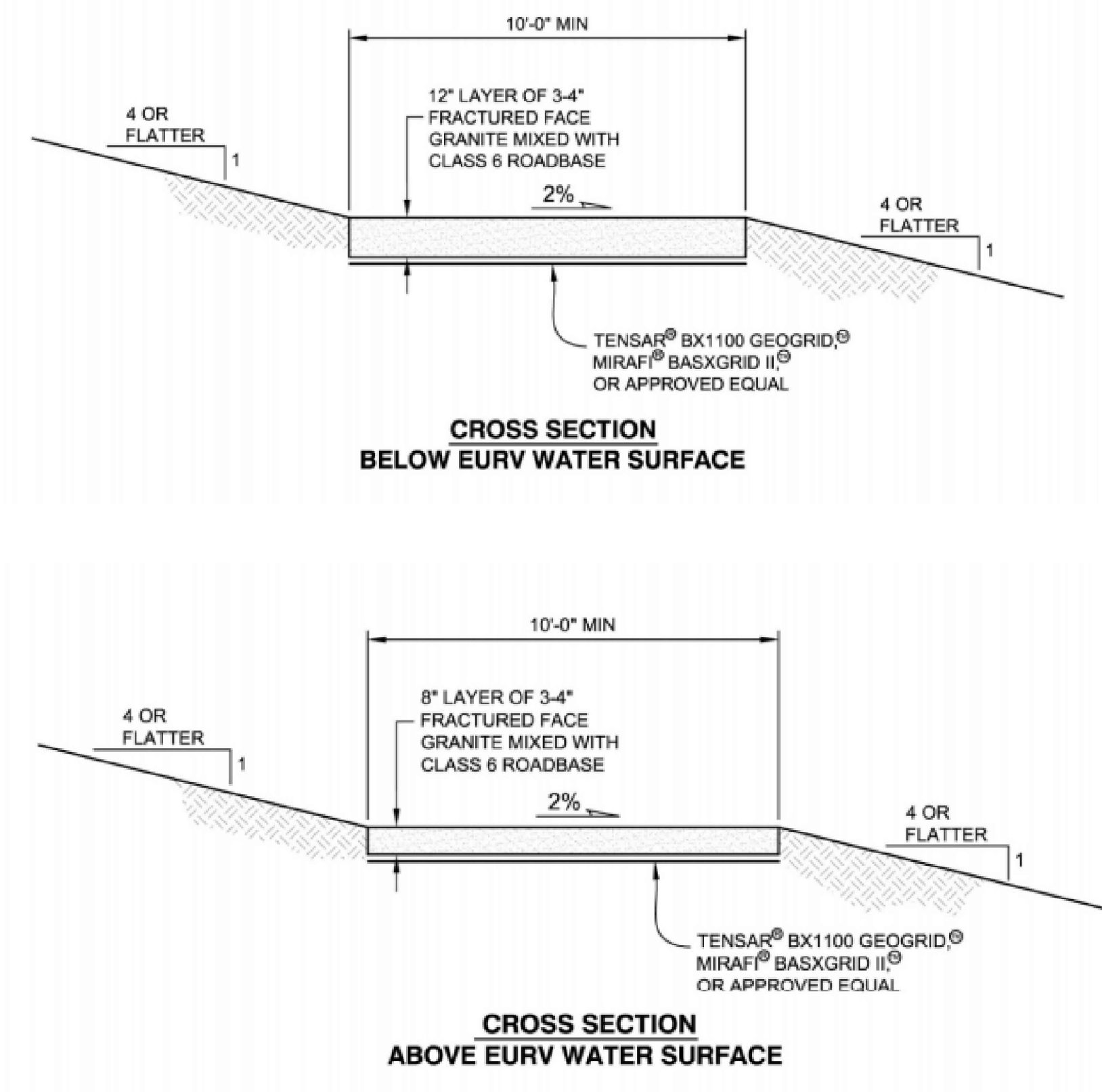
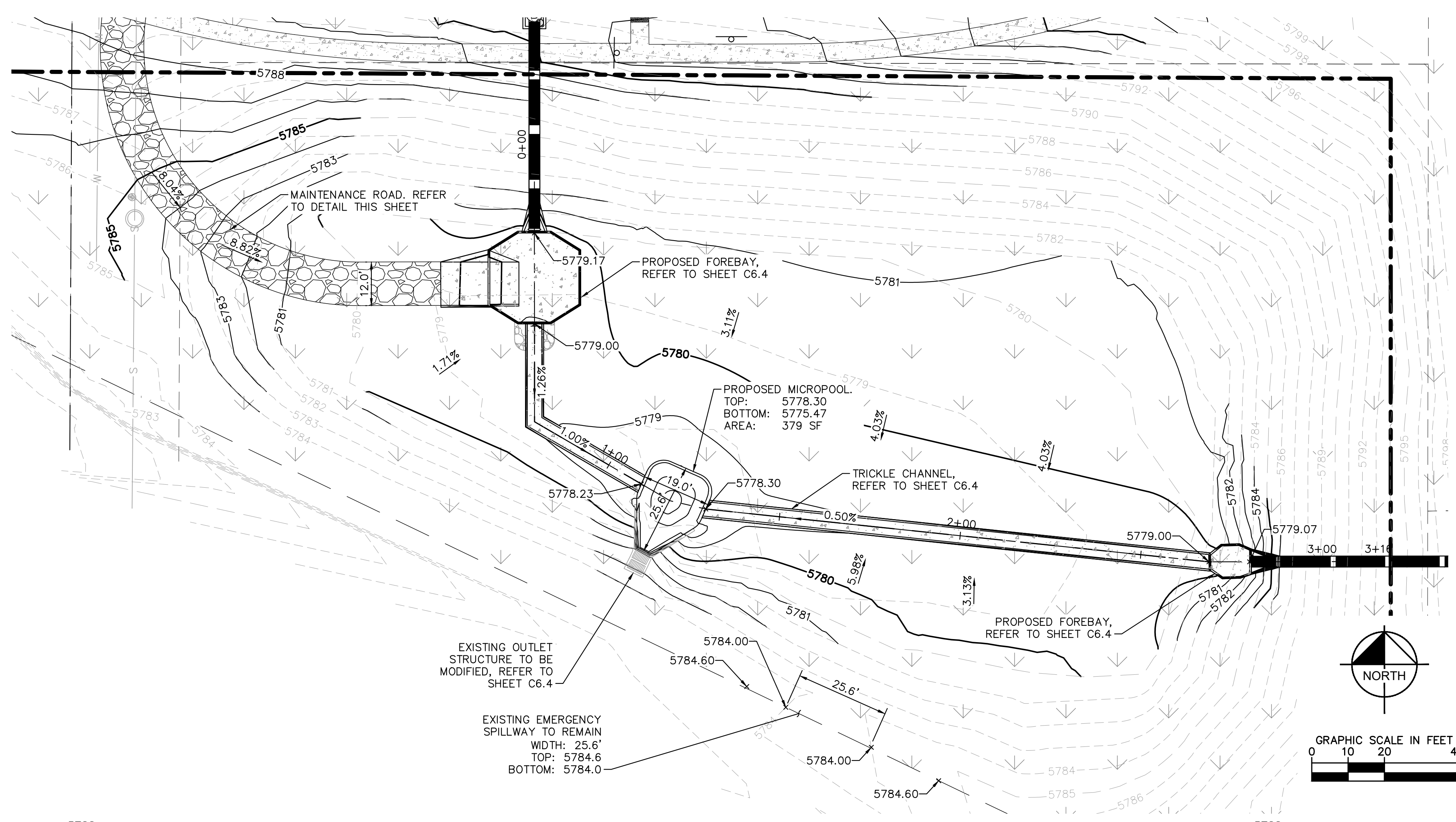
PRELIMINARY  
FOR REVIEW ONLY  
NOT FOR  
CONSTRUCTION  
**Kimley»Horn**  
Kimley-Horn and Associates, Inc.

PROJECT NO.  
096502001  
DRAWING NAME  
096502001PW-DT  
C6.2

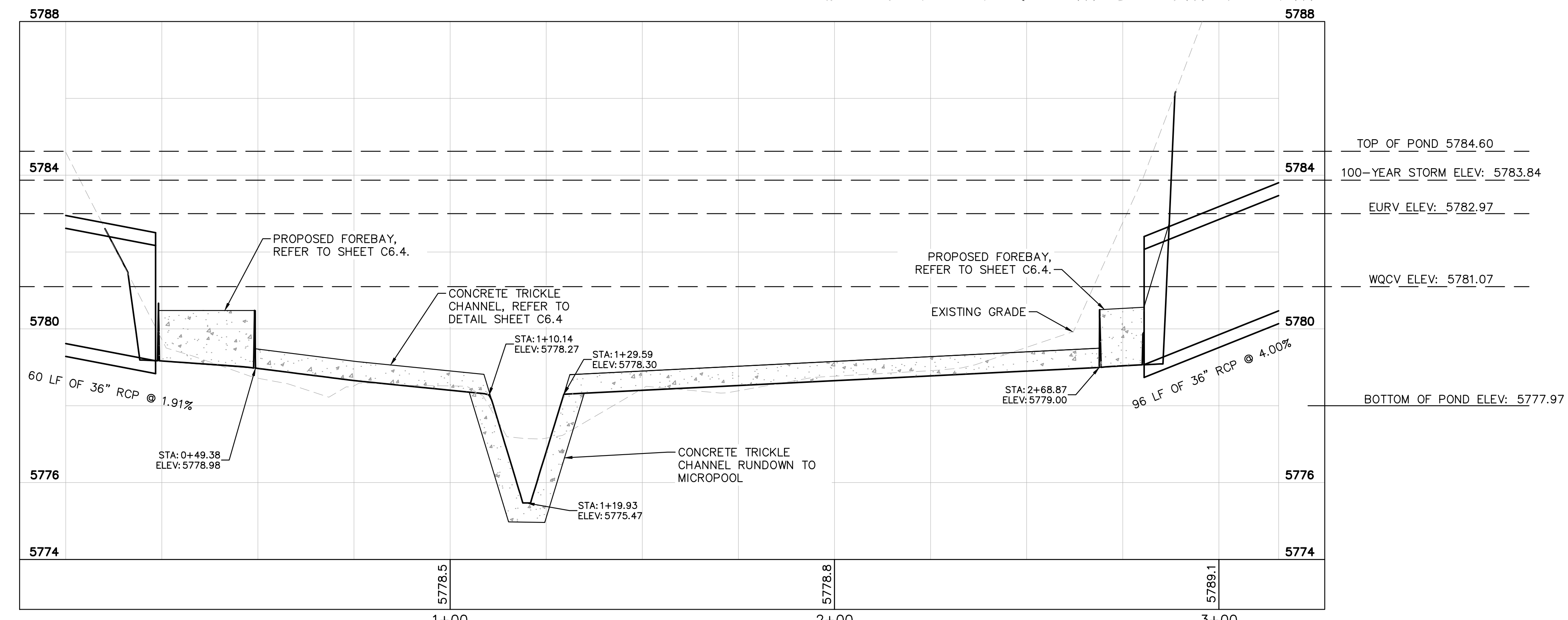


K:\DEN\_Civil\096502001 - Mixed Use Parker Rd\CADD\PlanSheets\096502001PW-DT.dwg - Kaspzok, Jack 10/8/2019 10:57 AM

K:\DEN\_Civil\096502001 - Mixed Use Parker Rd\VCADD\PlanSheets\096502001ST\_DET.dwg Kaspzok, Jack 10/18/2019 10:57 AM  
 I warrant that the information contained herein was prepared by me or under my direct supervision and that I am a duly licensed professional engineer in the State of Colorado. I warrant that the information contained herein was prepared by me or under my direct supervision and that I am a duly licensed professional engineer in the State of Colorado.



MAINTENANCE ROAD DETAILS  
N.T.S.



POND PROFILE  
HORIZONTAL SCALE: 1" = 20'  
VERTICAL SCALE: 1" = 2'

NO.	REVISION	BY	DATE	APPR

**Kimley»Horn**  
 2020 KIMLEY-HORN AND ASSOCIATES, INC.  
 4582 South Ulster Street, Suite 1500  
 Denver, Colorado 80237 (303) 228-2300

DESIGNED BY: DLS  
 DRAWN BY: ECZ  
 CHECKED BY: DLS  
 DATE: 03/11/20

PARKER & PINE MINOR DEVELOPMENT FILING NO.1  
 PARKER, CO  
 CONSTRUCTION DOCUMENTS  
**POND PLANS AND PROFILE**

PRELIMINARY  
 FOR REVIEW ONLY  
 NOT FOR  
 CONSTRUCTION  
**Kimley»Horn**  
 Kimley-Horn and Associates, Inc.

PROJECT NO.  
096502001  
 DRAWING NAME  
096502001ST\_DET  
**C6.3**



