

TRAILS AT CROWFOOT FILING NO. 14

A REPLAT OF TRACT AA OF TRAILS AT CROWFOOT FILING NO. 1
 A PART OF SECTION 9, TOWNSHIP 7 SOUTH, RANGE 66 WEST OF THE 6th PRINCIPAL MERIDIAN,
 TOWN OF PARKER, COUNTY OF DOUGLAS, STATE OF COLORADO
 SHEET 4 OF 6

TOTAL ACREAGE = 9.060 ACRES, 50 RESIDENTIAL LOTS, 5 TRACTS

LEGEND	
S.W.U.E.	SIDEWALK & UTILITY EASEMENT
U.E.	UTILITY EASEMENT
P.W.S.D.	PARKER WATER & SANITARY DISTRICT UTILITY EASEMENT
A.E.	ACCESS EASEMENT
EX U.E.	EXISTING UTILITY EASEMENT
---	SIDEWALK & UTILITY EASEMENT LINE
----	UTILITY EASEMENT LINE
●	SET NO. 6 REBAR, 30" LONG, W/2" ALUMINUM CAP STAMPED C.V.L. I.S. NO. 25369 UNLESS OTHERWISE NOTED

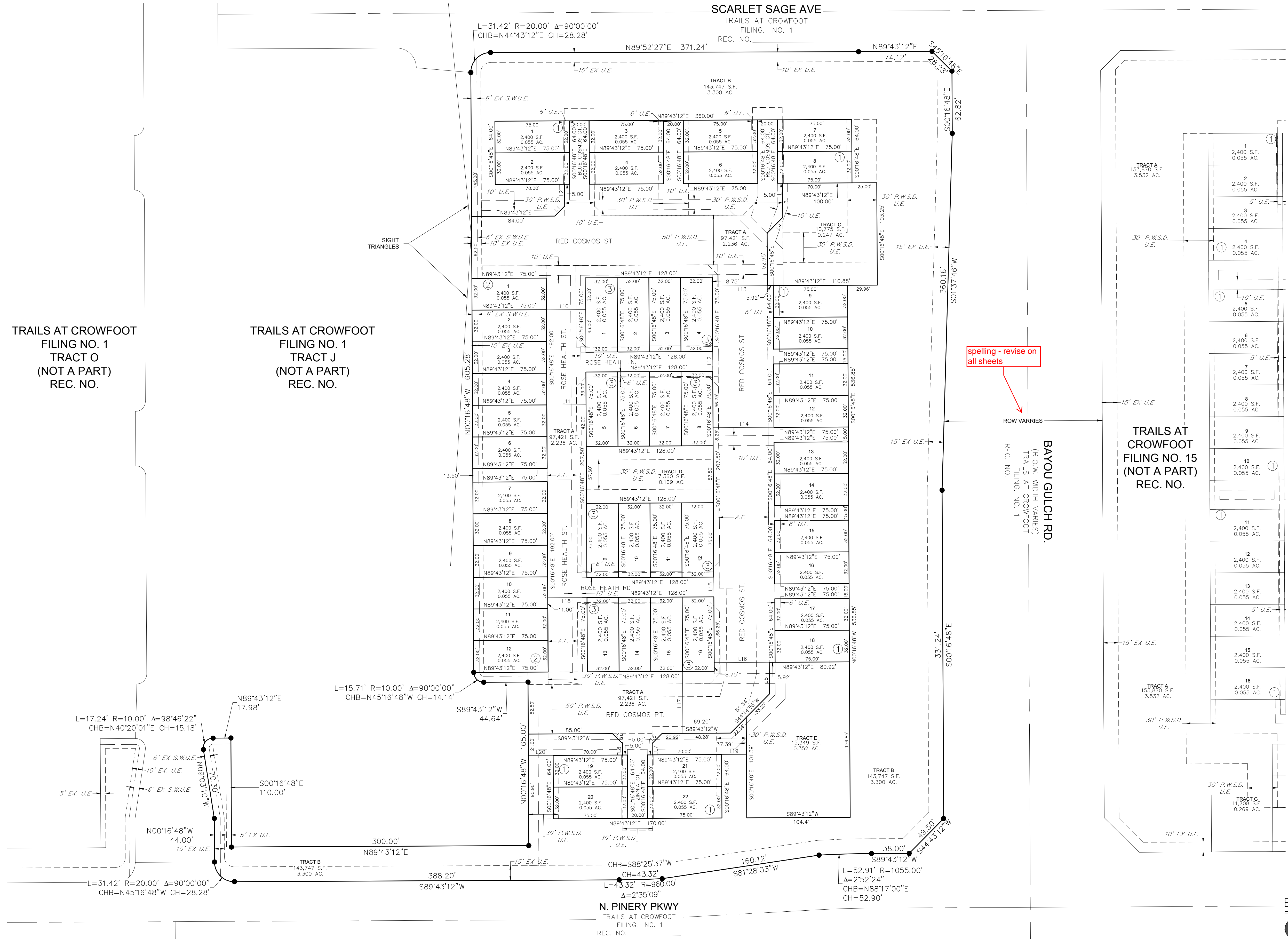
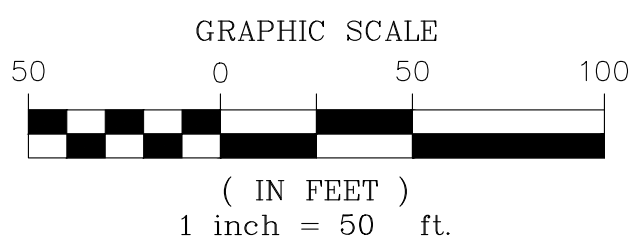
TRAILS AT CROWFOOT
 FILING NO. 1
 TRACT O
 (NOT A PART)
 REC. NO.

TRAILS AT CROWFOOT
 FILING NO. 1
 TRACT J
 (NOT A PART)
 REC. NO.

TRAILS AT CROWFOOT
 FILING NO. 15
 (NOT A PART)
 REC. NO.

NOTES:
 ALL 50' P.W.S.D U.E. ARE EASEMENTS DEDICATED TO PARKER WATER & SANITATION DISTRICT BY SEPARATE DOCUMENT.
 ALL 30' P.W.S.D U.E. ARE EASEMENTS DEDICATED TO PARKER WATER & SANITATION DISTRICT BY SEPARATE DOCUMENT.
 SEE SHEET 5 FOR DETAILS OF ACCESS EASEMENTS DEDICATED BY THIS PLAT.
 SEE SHEET 6 FOR DETAILS OF AREA DRY UTILITY EASEMENTS BY THIS PLAT.

LINE TABLE			LINE TABLE		
LINE NO.	DIRECTION	LENGTH	LINE NO.	DIRECTION	LENGTH
L1	N44°43'12"E	14.14'	L11	S89°43'12"W	39.56'
L2	S00°16'48"E	22.00'	L12	S00°16'48"E	20.00'
L3	S00°16'48"E	34.43'	L13	N89°43'12"E	55.56'
L4	S44°43'12"W	22.45'	L14	N89°43'12"E	61.48'
L5	N00°16'48"W	32.00'	L15	S00°16'48"E	20.00'
L6	N44°43'12"E	14.14'	L16	N89°43'12"E	55.56'
L7	N00°16'48"W	11.60'	L17	N00°16'48"W	62.50'
L8	N00°16'48"W	11.60'	L18	N89°43'12"E	39.56'
L9	N45°16'48"W	14.14'	L19	S89°43'12"W	25.00'
L10	S89°43'12"W	39.56'	L20	N89°43'12"E	25.00'



Spelling - revise on all sheets

N. PINERY PKWY
 TRAILS AT CROWFOOT
 FILING NO. 1
 REC. NO.

ENGINEER/SURVEYOR
CVL Consultants of Colorado, Inc.
 10333 E. Dry Creek Rd., Suite 240
 Englewood, CO 80112
 Tel: (720) 482-9526 / Fax: (720) 482-9546