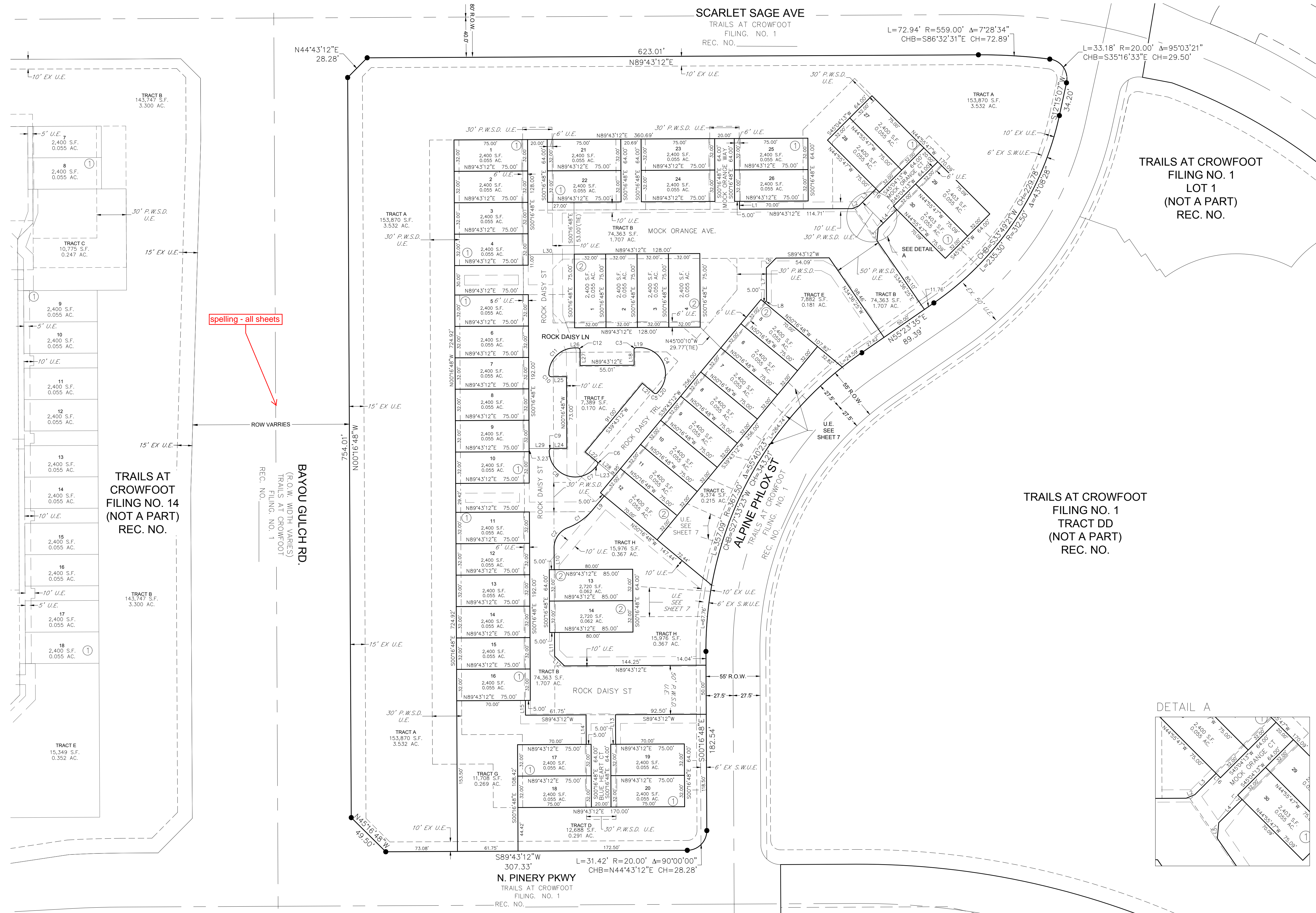


TRAILS AT CROWFOOT FILING NO. 15

A REPLAT OF TRACT CC OF TRAILS AT CROWFOOT FILING NO. 1
 A PART OF SECTION 9, TOWNSHIP 7 SOUTH, RANGE 66 WEST OF THE 6th PRINCIPAL MERIDIAN,
 TOWN OF PARKER, COUNTY OF DOUGLAS, STATE OF COLORADO
 SHEET 4 OF 7

TOTAL ACREAGE = 9.171 ACRES, 44 RESIDENTIAL LOTS, 8 TRACTS



spelling - all sheets

| LINE TABLE | | | LINE TABLE | | |
|------------|-------------|--------|------------|-------------|--------|
| LINE NO. | DIRECTION | LENGTH | LINE NO. | DIRECTION | LENGTH |
| L1 | N00°16'48"W | 8.00' | L16 | N44°55'47"W | 5.00' |
| L2 | N67°23'42"E | 7.60' | L17 | N44°55'47"W | 5.00' |
| L3 | N45°04'13"E | 24.54' | L18 | N00°16'48"W | 15.50' |
| L4 | N45°04'13"E | 26.86' | L19 | N89°43'12"E | 2.95' |
| L5 | N05°13'54"E | 12.81' | L20 | S39°43'12"W | 3.27' |
| L6 | S44°43'12"W | 14.14' | L21 | N50°16'48"W | 15.50' |
| L7 | S00°16'48"E | 33.20' | L22 | S50°16'48"E | 15.50' |
| L8 | S39°43'12"W | 2.80' | L23 | S39°29'15"W | 2.97' |
| L9 | S39°43'12"W | 19.04' | L24 | N89°43'12"E | 15.50' |
| L10 | S00°16'48"E | 22.10' | L25 | S89°43'12"W | 15.50' |
| L11 | S00°16'48"E | 24.10' | L26 | N89°43'12"E | 2.97' |
| L12 | N45°16'48"W | 14.14' | L27 | S00°16'48"E | 15.50' |
| L13 | N00°16'48"W | 30.08' | L28 | N50°16'48"W | 23.00' |
| L14 | N00°16'48"W | 30.08' | L29 | S89°43'12"W | 23.00' |
| L15 | N00°16'48"W | 15.00' | L30 | S89°43'12"W | 47.00' |

| CURVE TABLE | | | | | |
|-------------|--------|------------|--------|-----------------|--------------|
| CURVE NO. | RADIUS | DELTA | LENGTH | CHORD DIRECTION | CHORD LENGTH |
| C1 | 60.00' | 29°24'37" | 30.80' | N54°25'28"E | 30.46' |
| C2 | 22.00' | 69°24'34" | 26.65' | S34°25'29"W | 25.05' |
| C3 | 2.50' | 90°00'00" | 3.93' | N44°43'12"E | 3.54' |
| C4 | 26.50' | 130°00'00" | 60.13' | S25°16'48"E | 48.03' |
| C5 | 2.50' | 90°00'00" | 3.93' | S84°43'12"W | 3.54' |
| C6 | 2.50' | 90°00'00" | 3.93' | S05°16'48"E | 3.54' |
| C7 | 26.95' | 40°14'08" | 18.92' | S59°36'19"W | 18.54' |
| C8 | 26.51' | 100°06'21" | 46.31' | N49°53'55"W | 40.64' |
| C9 | 2.50' | 91°24'47" | 3.99' | N44°00'48"E | 3.58' |
| C10 | 2.50' | 91°26'19" | 3.99' | N44°37'18"W | 3.58' |
| C11 | 26.52' | 90°23'18" | 41.83' | N44°29'25"E | 37.63' |
| C12 | 2.50' | 90°00'00" | 3.93' | S45°16'48"E | 3.54' |

NOTES:
 ALL 50' P.W.S.D. U.E. ARE EASEMENTS DEDICATED TO PARKER WATER & SANITATION DISTRICT BY SEPARATE DOCUMENT.
 ALL 30' P.W.S.D. U.E. ARE EASEMENTS DEDICATED TO PARKER WATER & SANITATION DISTRICT BY SEPARATE DOCUMENT.
 SEE SHEET 5 FOR DETAILS OF ACCESS EASEMENTS DEDICATED BY THIS PLAT.
 SEE SHEET 6 FOR DETAILS OF IREA DRY UTILITY EASEMENTS DEDICATED BY THIS PLAT.
 SEE SHEET 7 FOR DETAILS OF UTILITY EASEMENTS FOR SANITARY SEWER SERVICES DEDICATED BY THIS PLAT.

| LEGEND | |
|----------|--|
| S.W.U.E. | SIDEWALK & UTILITY EASEMENT |
| U.E. | UTILITY EASEMENT |
| P.W.S.D. | PARKER WATER & SANITATION DISTRICT UTILITY EASEMENT |
| A.E. | ACCESS EASEMENT |
| EX U.E. | EXISTING UTILITY EASEMENT |
| - - - | SIDEWALK & UTILITY EASEMENT LINE |
| - - - - | UTILITY EASEMENT LINE |
| ● | SET NO. 6 REBAR, 30" LONG, W/2" ALUMINUM CAP STAMPED C.V.I. LS. NO. 25369 UNLESS OTHERWISE NOTED |

