

**Project Name:** Trails at Crowfoot Filing 16

**Project Number:** SUB18-032 – Plat 42 res. lots (21 duplex buildings)

**Date Received:** 08/06/2018

**Jurisdiction:** Town of Parker

**Due Date:** 09/04/2018

**Addressing Comments:**

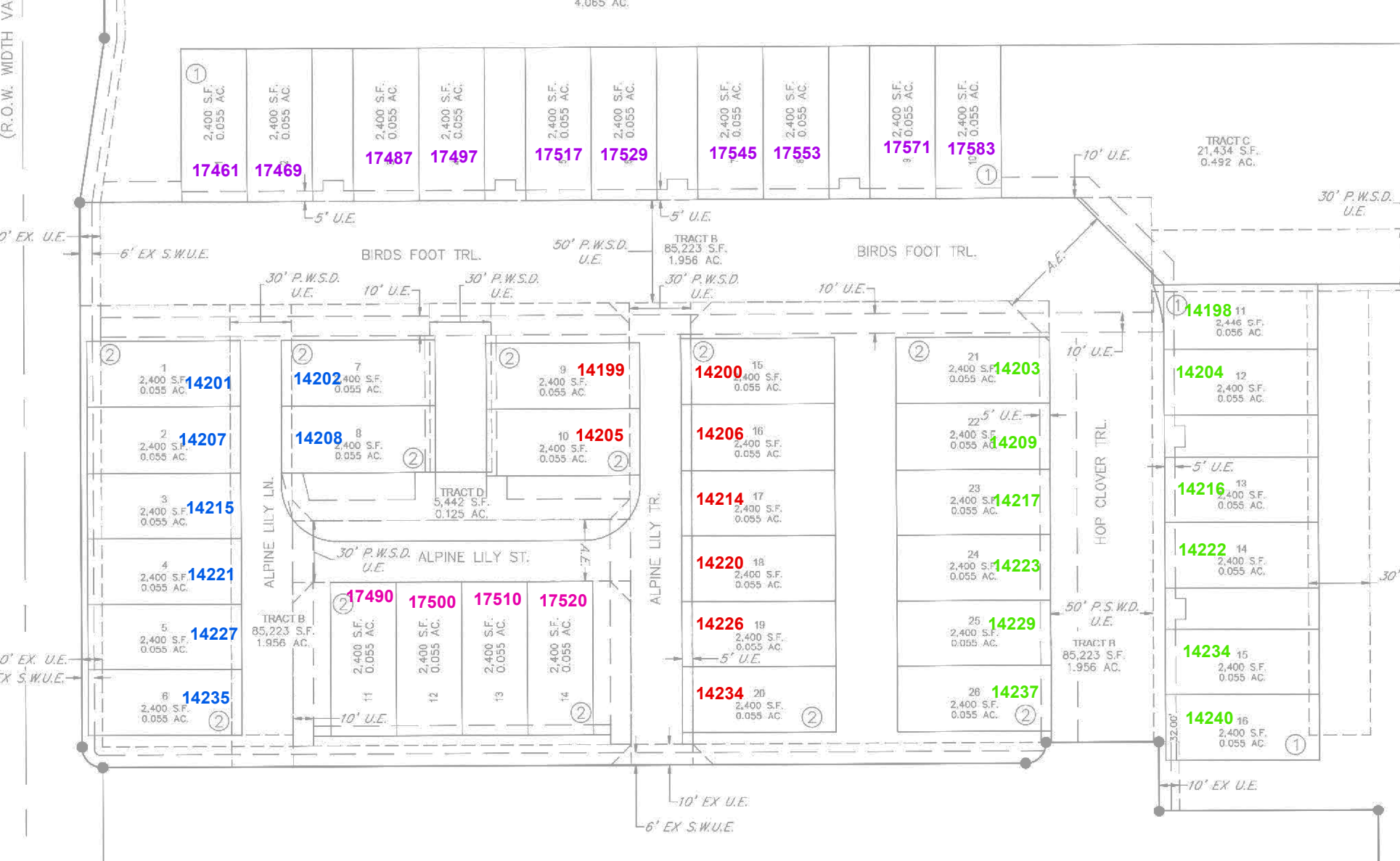
Any previously proposed address should be discarded. Please see attachment with proposed addresses.

**Engineering Comments:**

No Comments

**Planner Comments:**

Thank you for providing the opportunity for Douglas County Community Development to provide comment. The site is within the urban incorporated Parker Municipal Planning Area of the Douglas County Comprehensive Master Plan, which supports urban level development. Planning Services has no comment on the application.



①  
 2,400 S.F. 0.055 AC. **17461**  
 2,400 S.F. 0.055 AC. **17469**  
 2,400 S.F. 0.055 AC. **17487**  
 2,400 S.F. 0.055 AC. **17497**  
 2,400 S.F. 0.055 AC. **17517**  
 2,400 S.F. 0.055 AC. **17529**  
 2,400 S.F. 0.055 AC. **17545**  
 2,400 S.F. 0.055 AC. **17553**  
 2,400 S.F. 0.055 AC. **17571**  
 2,400 S.F. 0.055 AC. **17583**  
 ①

TRACT C  
 21,434 S.F.  
 0.492 AC.

②  
 1 2,400 S.F. 0.055 AC. **14201**  
 2 2,400 S.F. 0.055 AC. **14207**  
 3 2,400 S.F. 0.055 AC. **14215**  
 4 2,400 S.F. 0.055 AC. **14221**  
 5 2,400 S.F. 0.055 AC. **14227**  
 6 2,400 S.F. 0.055 AC. **14235**  
 ②  
 7 2,400 S.F. 0.055 AC. **14202**  
 8 2,400 S.F. 0.055 AC. **14208**  
 9 2,400 S.F. 0.055 AC. **14199**  
 10 2,400 S.F. 0.055 AC. **14205**  
 ②  
 11 2,400 S.F. 0.055 AC. **17490**  
 12 2,400 S.F. 0.055 AC. **17500**  
 13 2,400 S.F. 0.055 AC. **17510**  
 14 2,400 S.F. 0.055 AC. **17520**  
 ②

ALPINE LILY LN.

ALPINE LILY TR.

TRACT B  
 85,223 S.F.  
 1.956 AC.

TRACT D  
 5,442 S.F.  
 0.125 AC.

②  
 15 2,400 S.F. 0.055 AC. **14200**  
 16 2,400 S.F. 0.055 AC. **14206**  
 17 2,400 S.F. 0.055 AC. **14214**  
 18 2,400 S.F. 0.055 AC. **14220**  
 19 2,400 S.F. 0.055 AC. **14226**  
 20 2,400 S.F. 0.055 AC. **14234**  
 ②

②  
 21 2,400 S.F. 0.055 AC. **14203**  
 22 2,400 S.F. 0.055 AC. **14209**  
 23 2,400 S.F. 0.055 AC. **14217**  
 24 2,400 S.F. 0.055 AC. **14223**  
 25 2,400 S.F. 0.055 AC. **14229**  
 26 2,400 S.F. 0.055 AC. **14237**  
 ②

HOP CLOVER TRL.

①  
 11 2,446 S.F. 0.056 AC. **14198**  
 12 2,400 S.F. 0.055 AC. **14204**  
 13 2,400 S.F. 0.055 AC. **14216**  
 14 2,400 S.F. 0.055 AC. **14222**  
 15 2,400 S.F. 0.055 AC. **14234**  
 16 2,400 S.F. 0.055 AC. **14240**  
 ①

30'