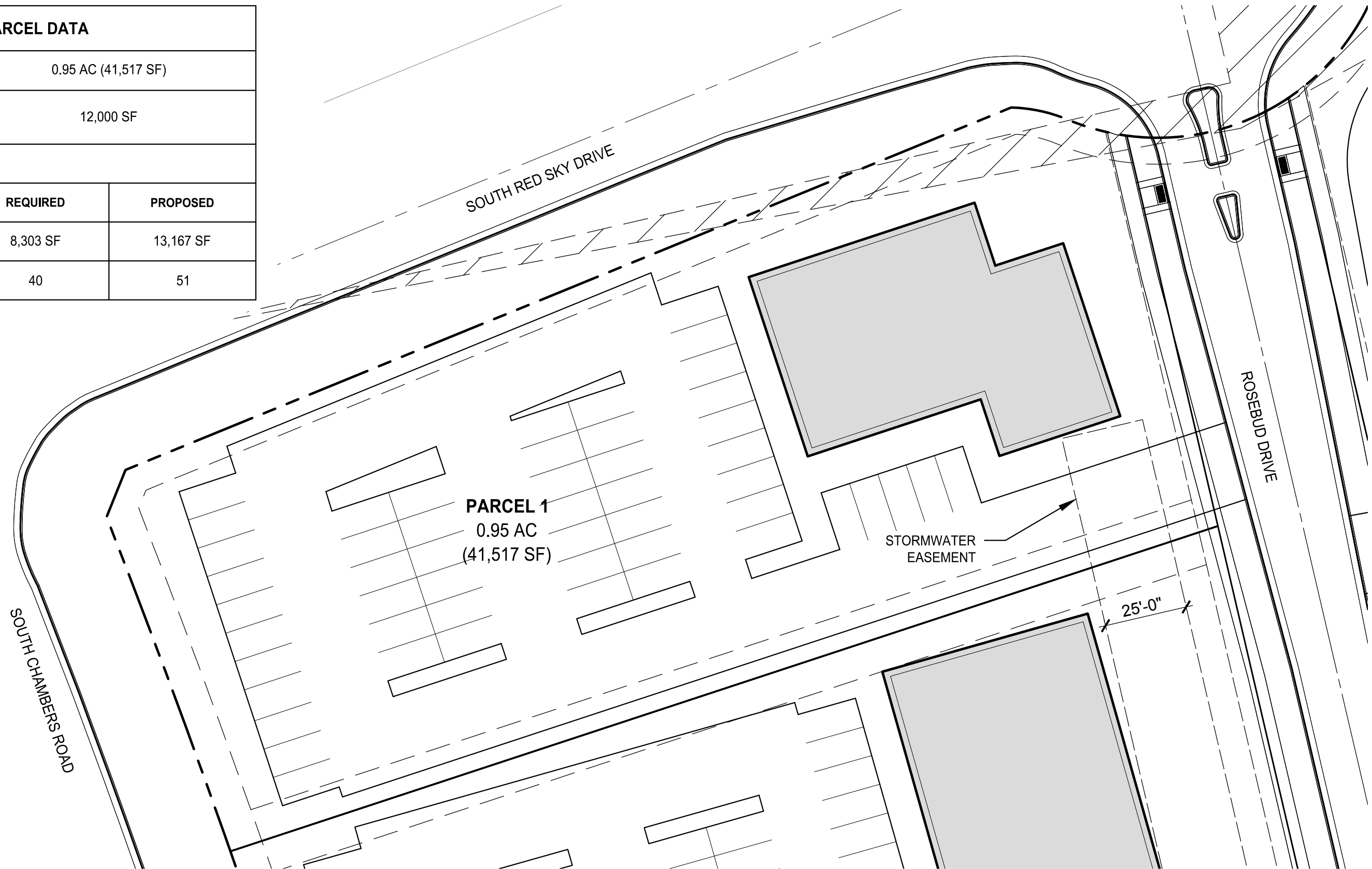


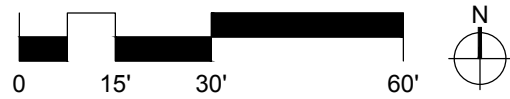
PARCEL DATA		
TOTAL GROSS AREA	0.95 AC (41,517 SF)	
TOTAL GROSS BUILDING AREA (ON TWO FLOORS)	12,000 SF	
	REQUIRED	PROPOSED
TOTAL OPEN SPACE (20% REQUIRED)	8,303 SF	13,167 SF
TOTAL PARKING SPACES (1:300 SF)	40	51



PARCEL 1
0.95 AC
(41,517 SF)

STORMWATER
EASEMENT

25'-0"

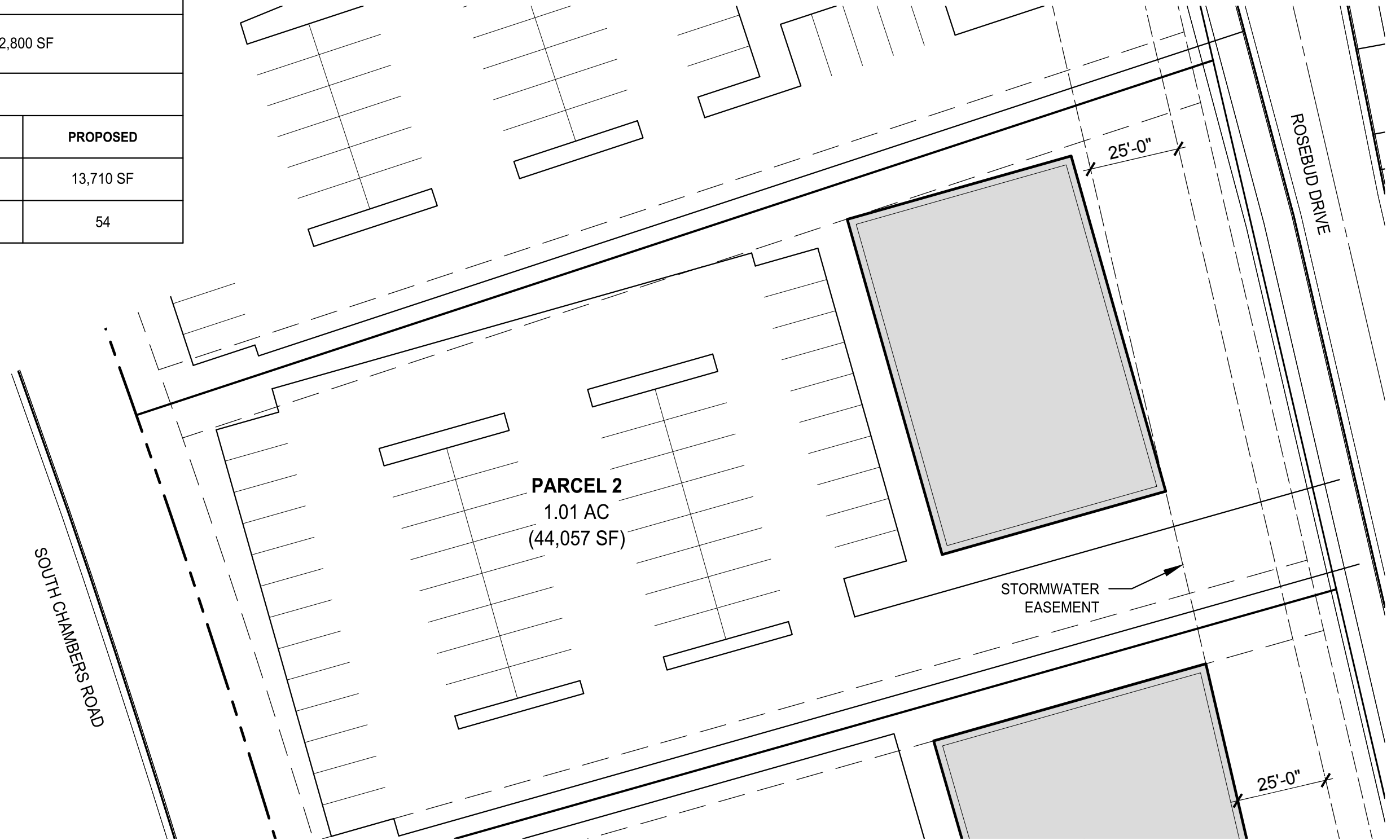


PARCEL 1
CHAMBERS & HESS - COMMERCIAL SITE PLAN



DATE: 05/01/2020
DRAWN BY: MT, KF
CHECKED BY: MT
SCALE: 1" = 30'
SHEET 1 OF 11

PARCEL DATA		
TOTAL GROSS AREA	1.01 AC (44,057 SF)	
TOTAL GROSS BUILDING AREA (ON TWO FLOORS)	12,800 SF	
	REQUIRED	PROPOSED
TOTAL OPEN SPACE (20% REQUIRED)	8,811 SF (20%)	13,710 SF
TOTAL PARKING SPACES (1:300 SF)	43	54

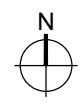
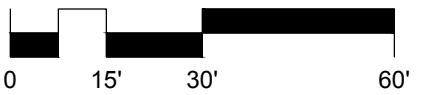


PARCEL 2
1.01 AC
(44,057 SF)

STORMWATER
EASEMENT

ROSEBUD DRIVE

SOUTH CHAMBERS ROAD



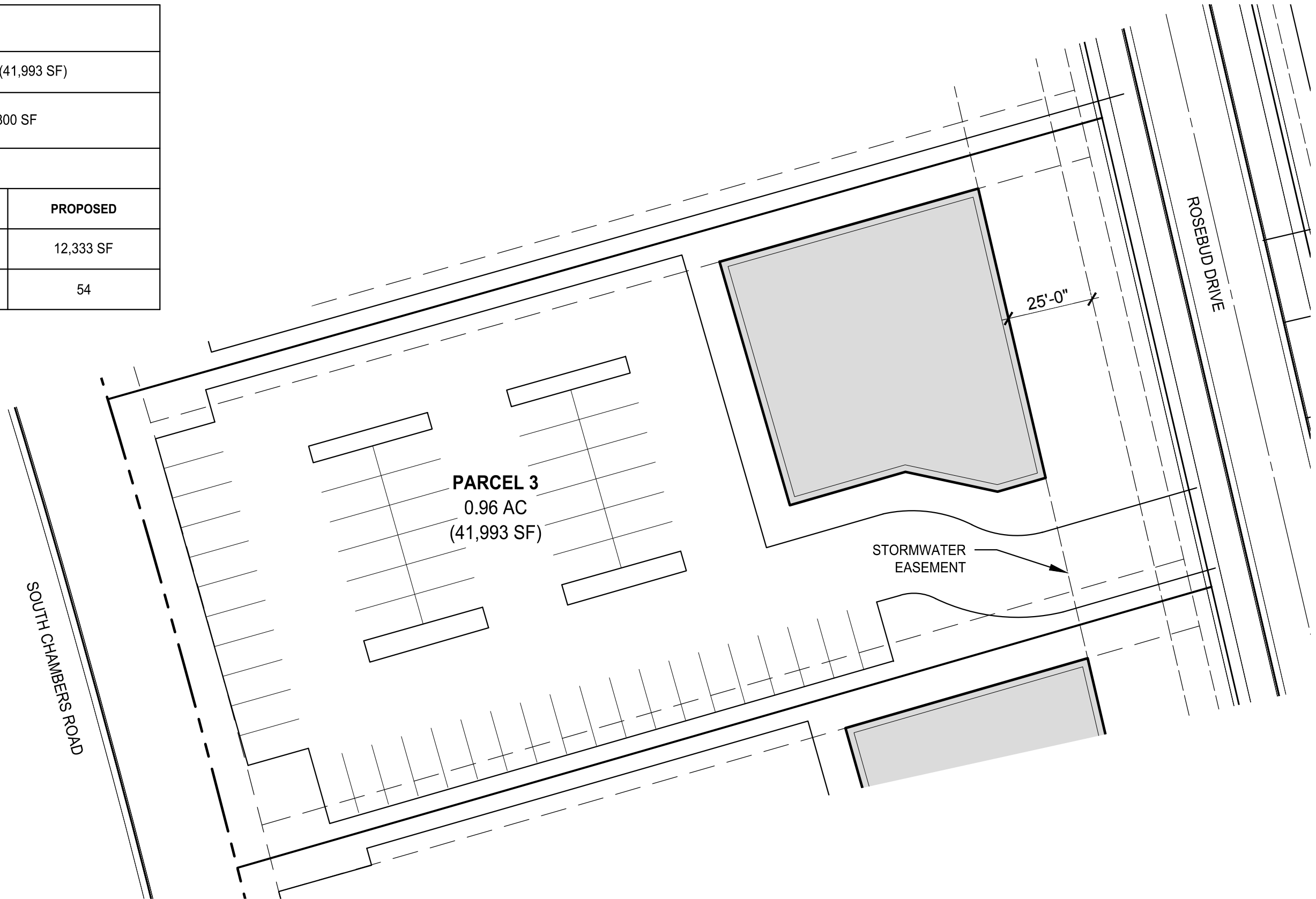
PARCEL 2

CHAMBERS & HESS - COMMERCIAL SITE PLAN



DATE:	05/01/2020
DRAWN BY:	MT, KF
CHECKED BY:	MT
SCALE:	1" = 30'
SHEET	2 OF 11

PARCEL DATA		
TOTAL GROSS AREA	0.96 AC (41,993 SF)	
TOTAL GROSS BUILDING AREA (ON TWO FLOORS)	12,800 SF	
	REQUIRED	PROPOSED
TOTAL OPEN SPACE (20% REQUIRED)	8,986 SF (20%)	12,333 SF
TOTAL PARKING SPACES (1:300 SF)	43	54



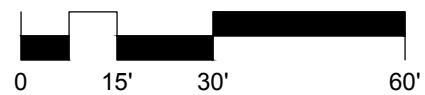
PARCEL 3
0.96 AC
(41,993 SF)

STORMWATER
EASEMENT

25'-0"

SOUTH CHAMBERS ROAD

ROSEBUD DRIVE



PARCEL 3

CHAMBERS & HESS - COMMERCIAL SITE PLAN

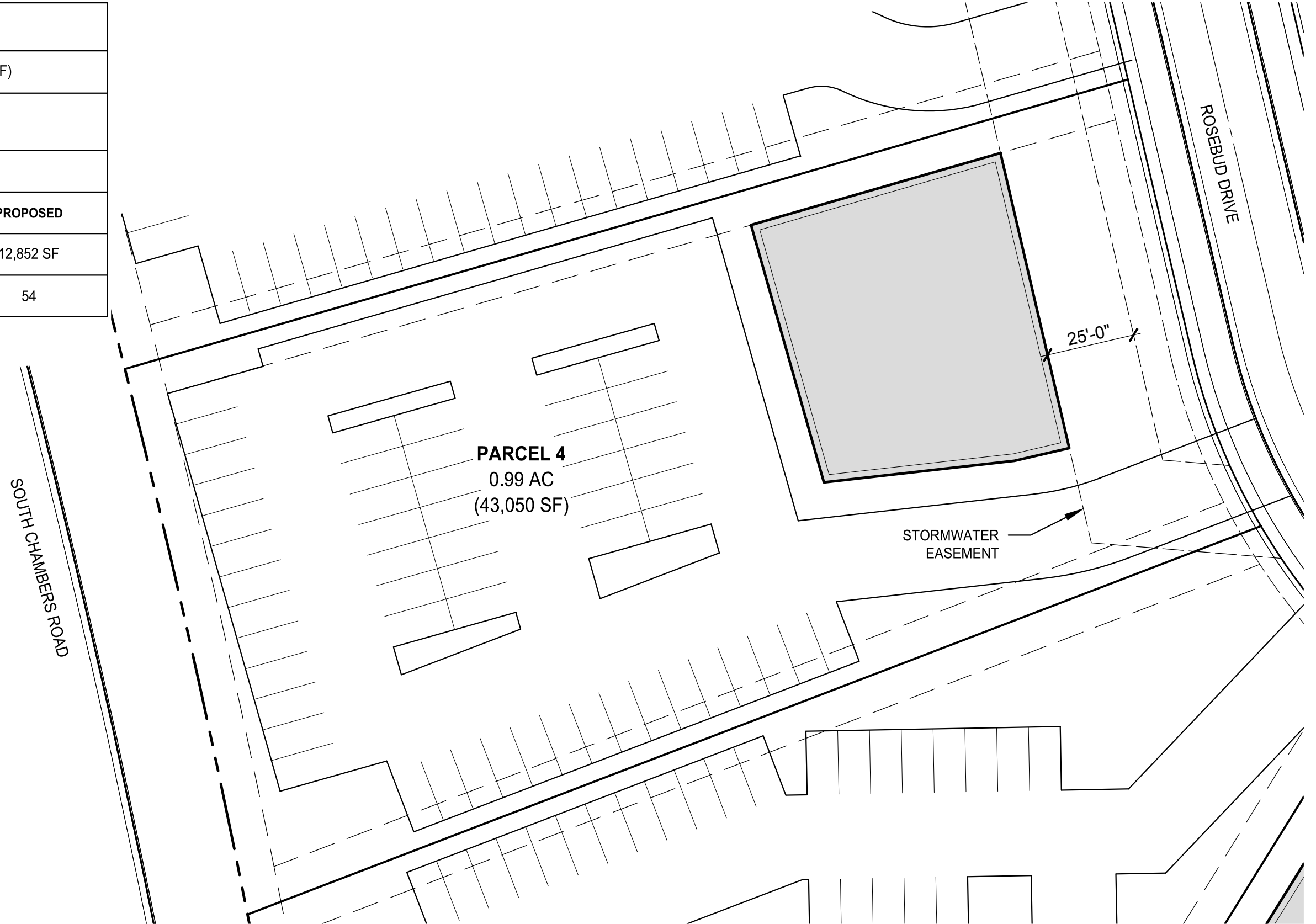


DATE:	05/01/2020
DRAWN BY:	MT, KF
CHECKED BY:	MT
SCALE:	1" = 30'
SHEET	3 OF 11

PROJECT NO. D01173

© 2020 Rick Engineering Company

PARCEL DATA		
TOTAL GROSS AREA	0.99 AC (43,050 SF)	
TOTAL GROSS BUILDING AREA (ON TWO FLOORS)	12,800 SF	
	REQUIRED	PROPOSED
TOTAL OPEN SPACE (20% REQUIRED)	8,610 SF (20%)	12,852 SF
TOTAL PARKING SPACES (1:300 SF)	43	54



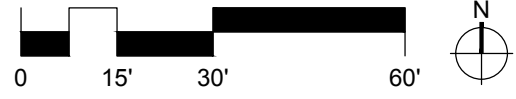
PARCEL 4
0.99 AC
(43,050 SF)

STORMWATER
EASEMENT

25'-0"

SOUTH CHAMBERS ROAD

ROSEBUD DRIVE



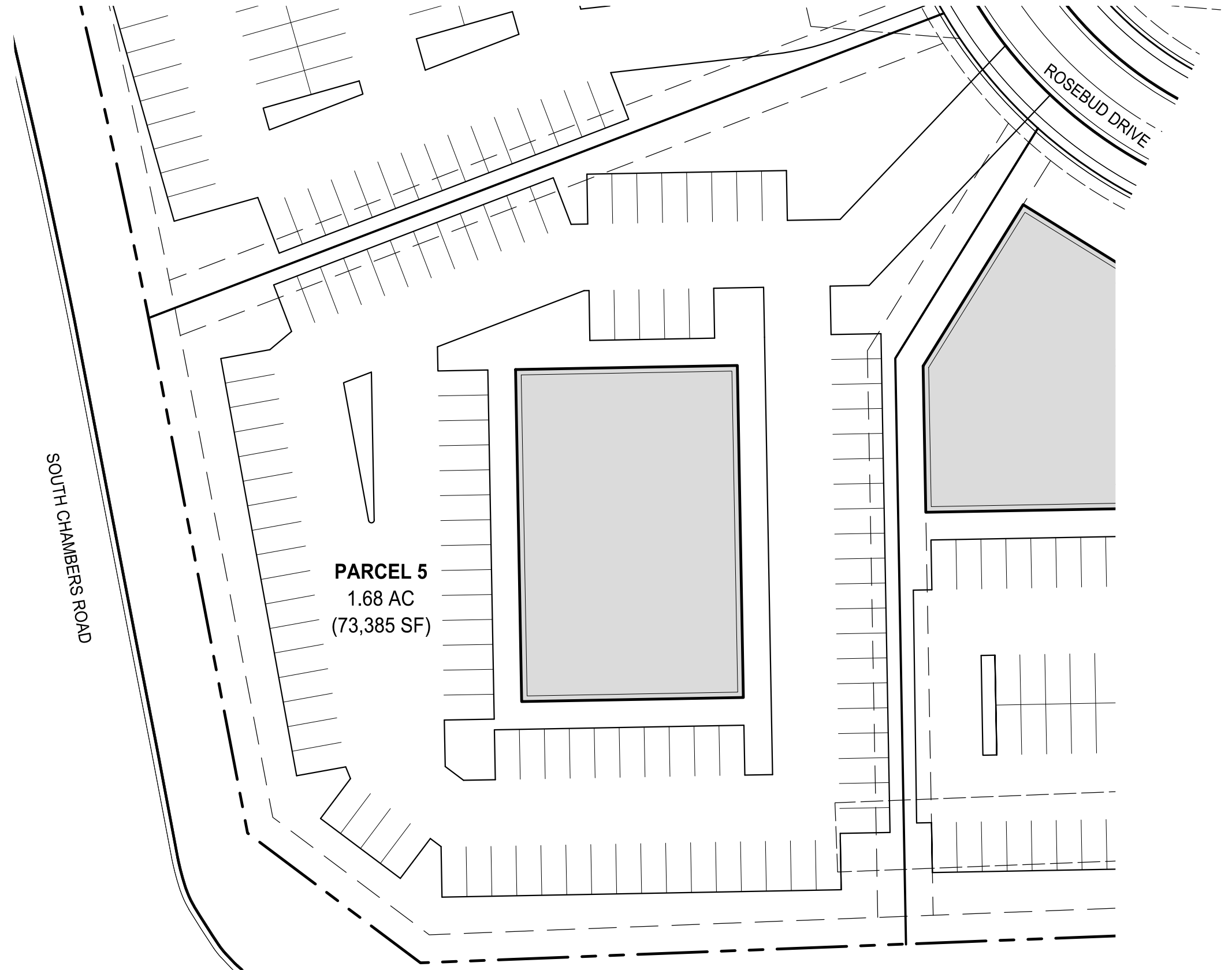
PARCEL 4

CHAMBERS & HESS - COMMERCIAL SITE PLAN



DATE:	05/01/2020
DRAWN BY:	MT, KF
CHECKED BY:	MT
SCALE:	1" = 30'
SHEET	4 OF 11

PARCEL DATA		
TOTAL GROSS AREA	1.68 AC (73,385 SF)	
TOTAL GROSS BUILDING AREA (ON THREE FLOORS)	28,750 SF	
	REQUIRED	PROPOSED
TOTAL OPEN SPACE (20% REQUIRED)	14,677 SF (20%)	24,972 SF
TOTAL PARKING SPACES (1:300 SF)	96	106

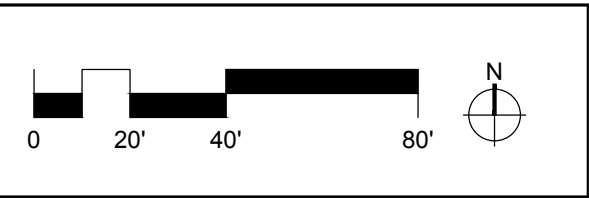
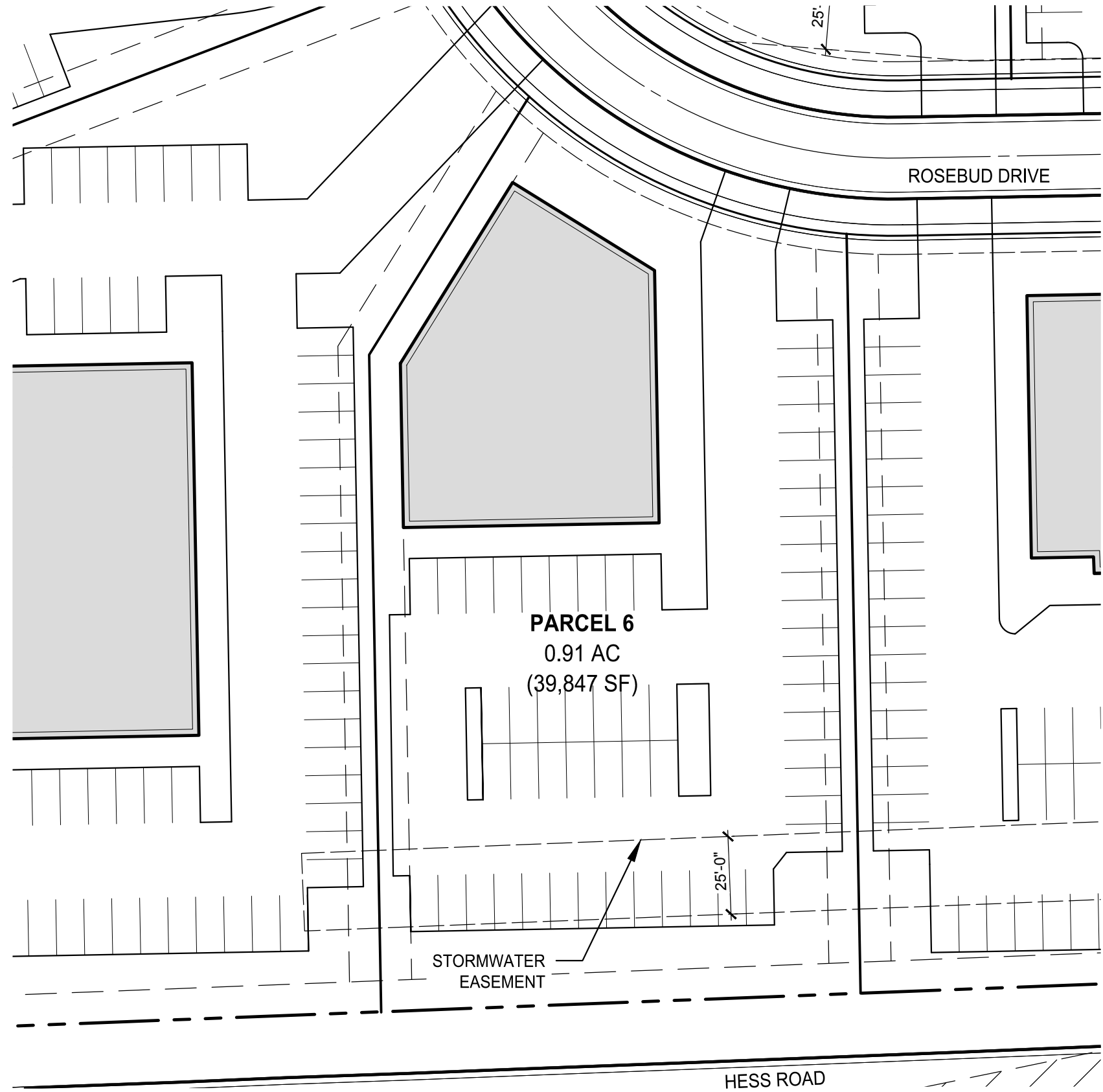


PARCEL 5

CHAMBERS & HESS - COMMERCIAL SITE PLAN

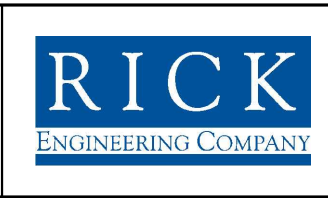
	DATE: 05/01/2020
	DRAWN BY: MT, KF
	CHECKED BY: MT
	SCALE: 1" = 40'
	SHEET 5 OF 11

PARCEL DATA		
TOTAL GROSS AREA	0.91 AC (39,847 SF)	
TOTAL GROSS BUILDING AREA (ON TWO FLOORS)	15,000 SF	
	REQUIRED	PROPOSED
TOTAL OPEN SPACE (20% REQUIRED)	7,969 SF (20%)	12,758 SF
TOTAL PARKING SPACES (1:300 SF)	50	55



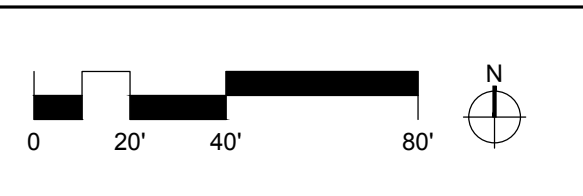
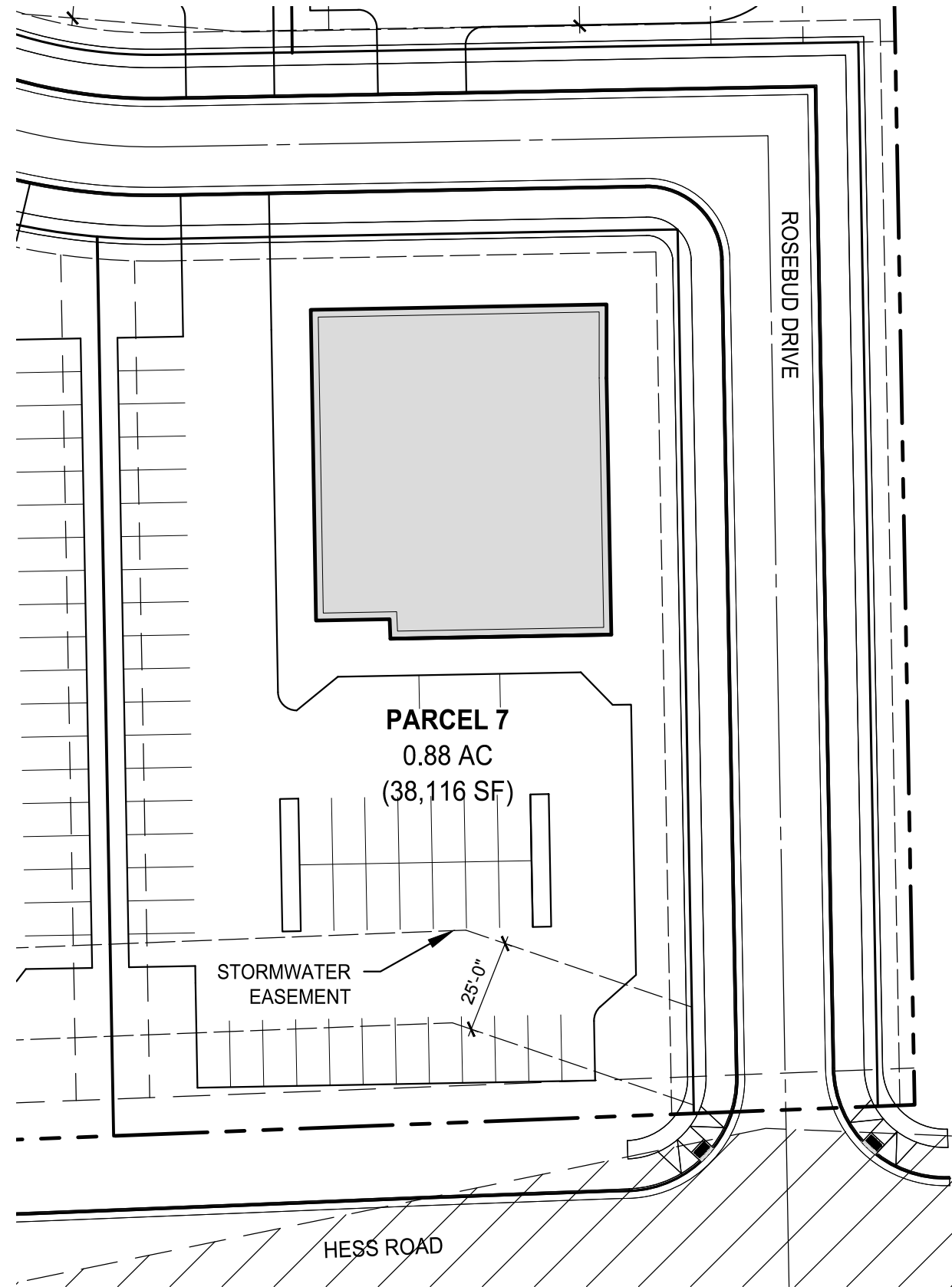
PARCEL 6

CHAMBERS & HESS - COMMERCIAL SITE PLAN



DATE:	05/01/2020
DRAWN BY:	MT, KF
CHECKED BY:	MT
SCALE:	1" = 40'
SHEET	6 OF 11

PARCEL DATA		
TOTAL GROSS AREA	0.88 AC (38,116 SF)	
TOTAL GROSS BUILDING AREA (ON TWO FLOORS)	14,000 SF	
	REQUIRED	PROPOSED
TOTAL OPEN SPACE (20% REQUIRED)	7,623 SF (20%)	12,633 SF
TOTAL PARKING SPACES (1:300 SF)	47	48

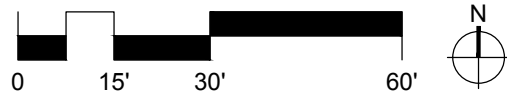
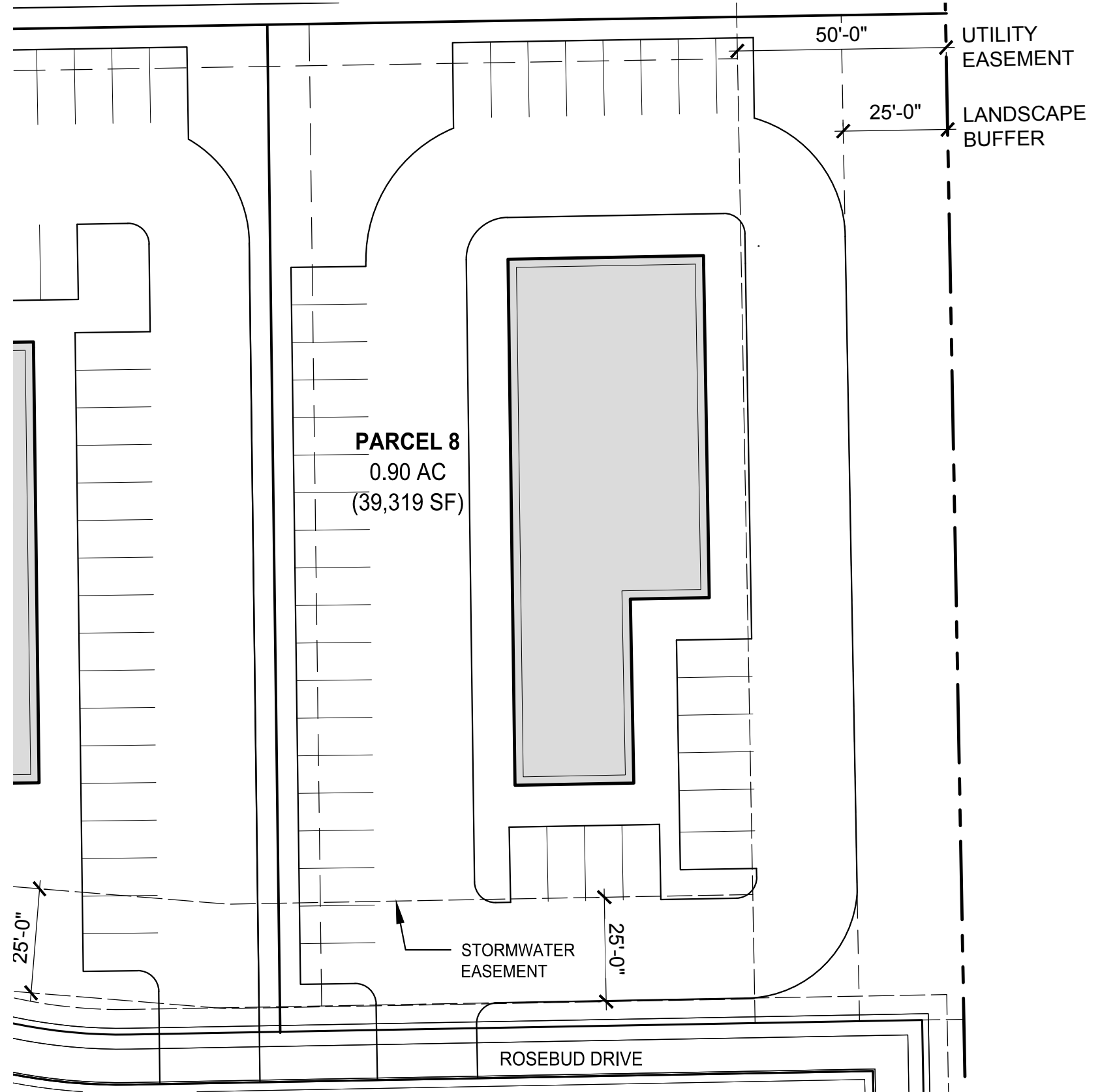


PARCEL 7

CHAMBERS & HESS - COMMERCIAL SITE PLAN

RICK ENGINEERING COMPANY	DATE: 05/01/2020
	DRAWN BY: MT, KF
	CHECKED BY: MT
	SCALE: 1" = 40'
	SHEET 7 OF 11

PARCEL DATA		
TOTAL GROSS AREA	0.90 AC (39,319 SF)	
TOTAL GROSS BUILDING AREA (ON TWO FLOORS)	10,000 SF	
	REQUIRED	PROPOSED
TOTAL OPEN SPACE (20% REQUIRED)	7,863 (20%)	15,087 SF
TOTAL PARKING SPACES (1:300 SF)	34	37



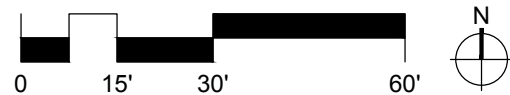
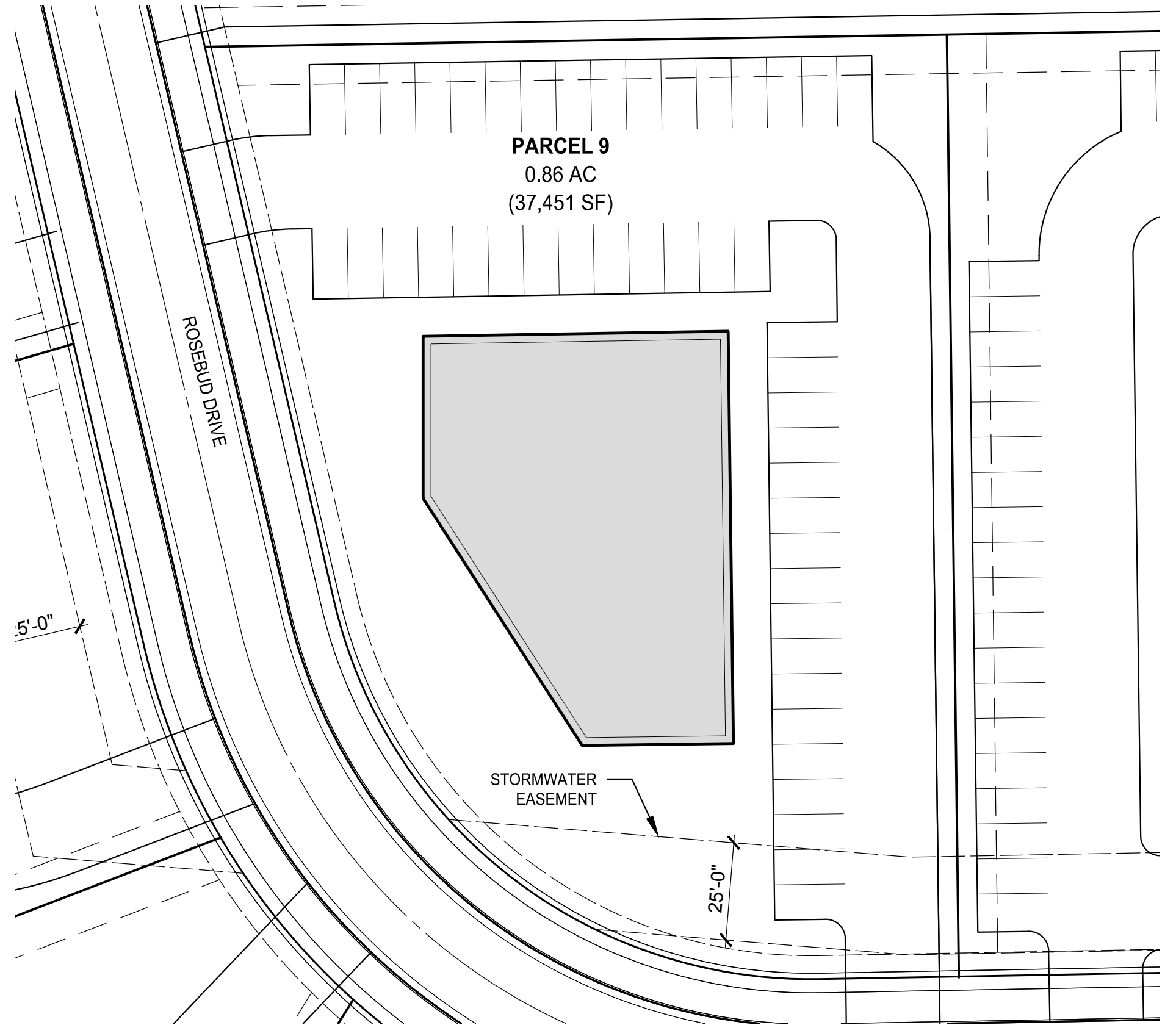
PARCEL 8

CHAMBERS & HESS - COMMERCIAL SITE PLAN



DATE: 05/01/2020
 DRAWN BY: MT, KF
 CHECKED BY: MT
 SCALE: 1" = 30'
 SHEET 8 OF 11

PARCEL DATA		
TOTAL GROSS AREA	0.86 AC (37,451 SF)	
TOTAL GROSS BUILDING AREA (ON TWO FLOORS)	14,000 SF	
	REQUIRED	PROPOSED
TOTAL OPEN SPACE (20% REQUIRED)	7,491 (20%)	14,215 SF
TOTAL PARKING SPACES (1:300 SF)	46	46

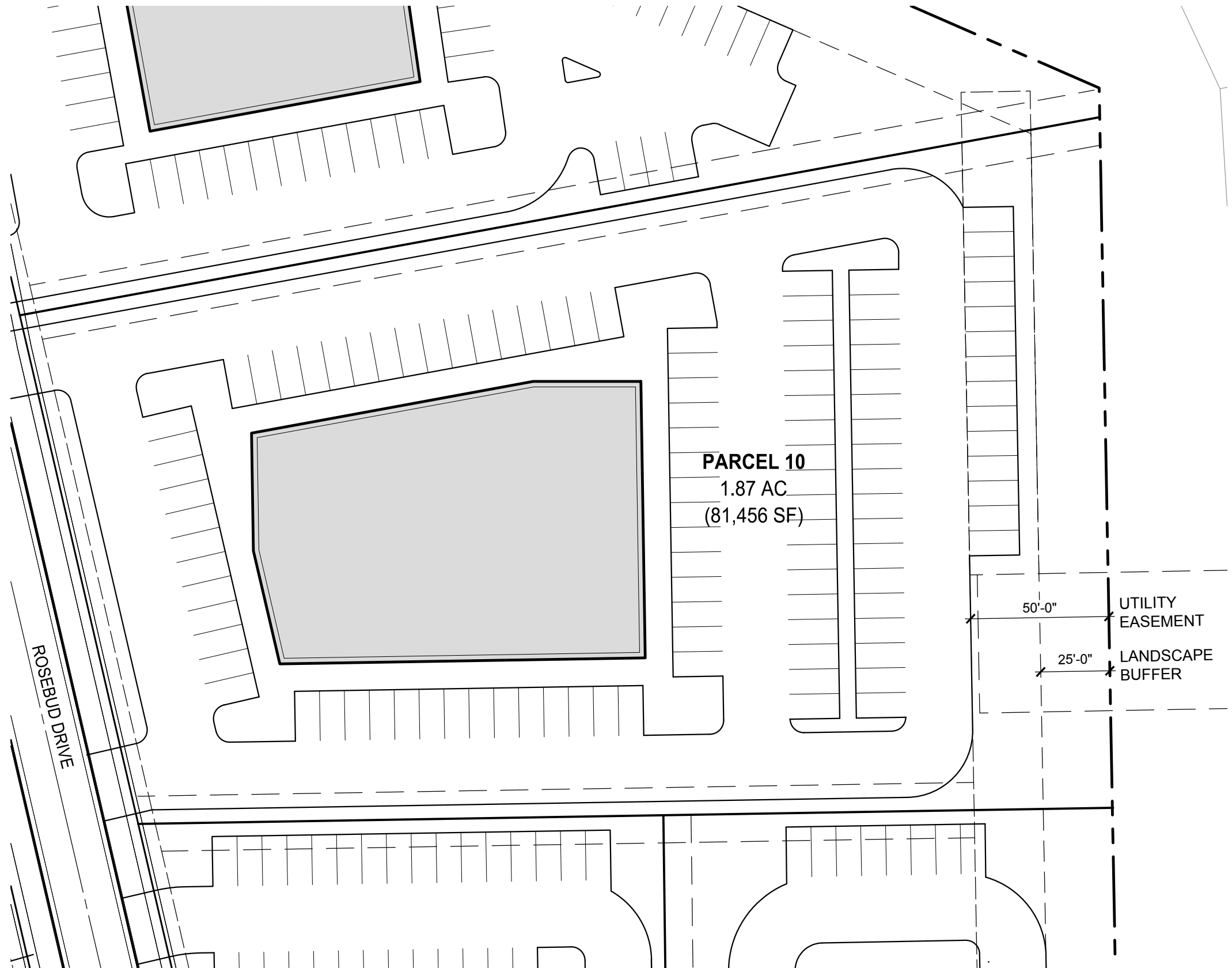


PARCEL 9
CHAMBERS & HESS - COMMERCIAL SITE PLAN



DATE: 05/01/2020
 DRAWN BY: MT, KF
 CHECKED BY: MT
 SCALE: 1" = 30'
 SHEET 9 OF 11

PARCEL DATA		
TOTAL GROSS AREA	1.87 AC (81,456 SF)	
TOTAL GROSS BUILDING AREA (ON TWO FLOORS)	26,500 SF	
	REQUIRED	PROPOSED
TOTAL OPEN SPACE (20% REQUIRED)	16,291 SF (20%)	24,122 SF
TOTAL PARKING SPACES (1:300 SF)	99	104



PARCEL 10

CHAMBERS & HESS - COMMERCIAL SITE PLAN

RICK
ENGINEERING COMPANY

DATE: 05/01/2020

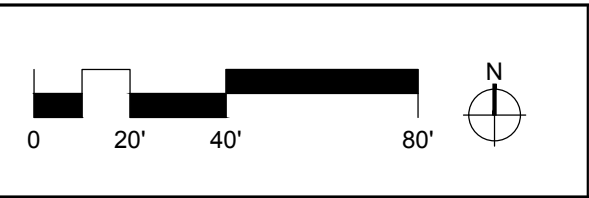
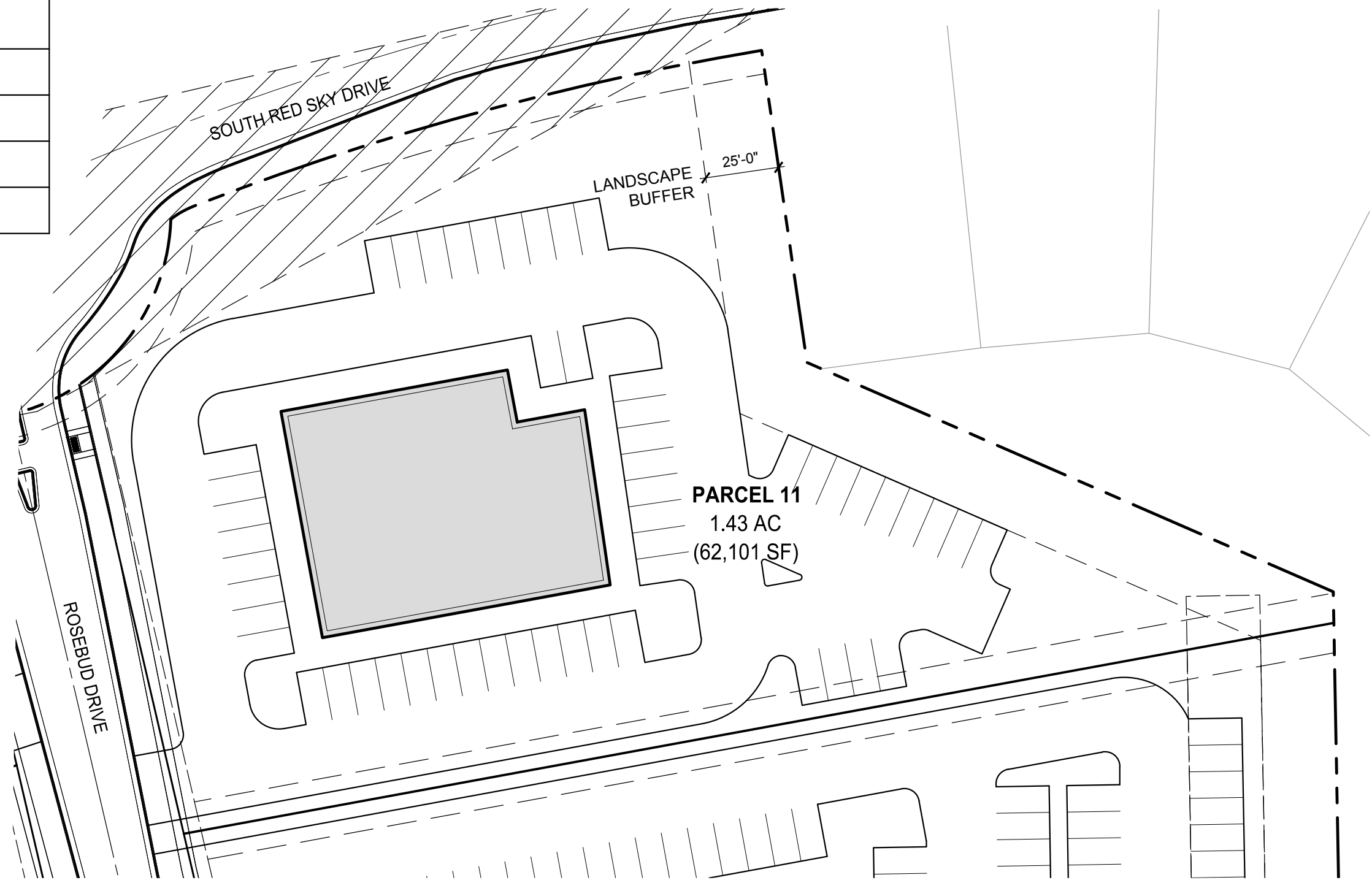
DRAWN BY: MT, KF

CHECKED BY: MT

SCALE: 1" = 40'

SHEET 10 OF 11

PARCEL DATA		
TOTAL GROSS AREA	1.43 AC (62,101 SF)	
TOTAL GROSS BUILDING AREA (ON TWO FLOORS)	15,000 SF	
	REQUIRED	PROPOSED
TOTAL OPEN SPACE (20% REQUIRED)	12,4202 SF (20%)	28,253 SF
TOTAL PARKING SPACES (1:300 SF)	50	53



PARCEL 11

CHAMBERS & HESS - COMMERCIAL SITE PLAN

RICK ENGINEERING COMPANY	DATE: 05/01/2020
	DRAWN BY: MT, KF
	CHECKED BY: MT
	SCALE: 1" = 40'
	SHEET 11 OF 11