

DOUGLAS 234 FILING 5

A REPLAT OF LOT 1, BLOCK 10, DOUGLAS 234 FILING NO. 1, BEING LOCATED IN SOUTHEAST QUARTER OF SECTION 29, TOWNSHIP 6 SOUTH, RANGE 66 WEST 6TH P.M. TOWN OF PARKER, COUNTY OF DOUGLAS, STATE OF COLORADO

SHEET 2 OF 2

SOUTH CORNER SECTION 29
FOUND 3.25" ALUMINUM CAP
PLS 35593 IN RANGE BOX
MATCHING MONUMENT
RECORD FILED 11/29/05

CURVE TABLE					
CURVE #	LENGTH	RADIUS	DELTA	CHORD BEARING	CHORD LENGTH
C1	18.63'	3085.00'	000°20'45"	N11°01'27"W	18.63'
C2	158.30'	3085.00'	002°56'24"	N12°40'02"W	158.28'
C3	141.78'	3085.00'	002°38'00"	N15°27'13"W	141.77'
C4	137.05'	3085.00'	002°32'43"	N18°02'35"W	137.04'
C5	96.12'	3085.00'	001°47'07"	N20°12'30"W	96.11'
C6	14.30'	70.50'	011°37'10"	S73°00'18"E	14.27'
C7	59.79'	70.50'	048°35'32"	N76°53'21"E	58.01'
C8	51.78'	70.50'	042°04'56"	N31°33'08"E	50.62'
C9	170.02'	125.00'	077°55'45"	S52°05'01"E	157.21'
C10	238.02'	175.00'	077°55'45"	S52°05'01"E	220.09'
C11	53.00'	175.00'	017°21'08"	S21°47'43"E	52.80'
C12	53.80'	175.00'	017°36'54"	S39°16'43"E	53.59'
C13	113.20'	175.00'	037°03'44"	S66°37'03"E	111.24'
C14	70.51'	70.51'	008°37'44"	N61°14'7"E	10.61'
C15	20.00'	20.00'	005°31'02"	S66°00'02"W	1.93'
C16	80.50'	80.50'	000°56'23"	N6°08'30"E	1.32'
C17	1.26'	3084.98'	000°01'25"	N21°18'13"W	1.26'
C18	10.29'	3085.00'	000°11'28"	N21°11'47"W	10.29'

EXISTING AREA
UG FACILITIES -
MONUMENT NOT
ALLOWED IN
EXISTING UE
AND ADDITIONAL
UE

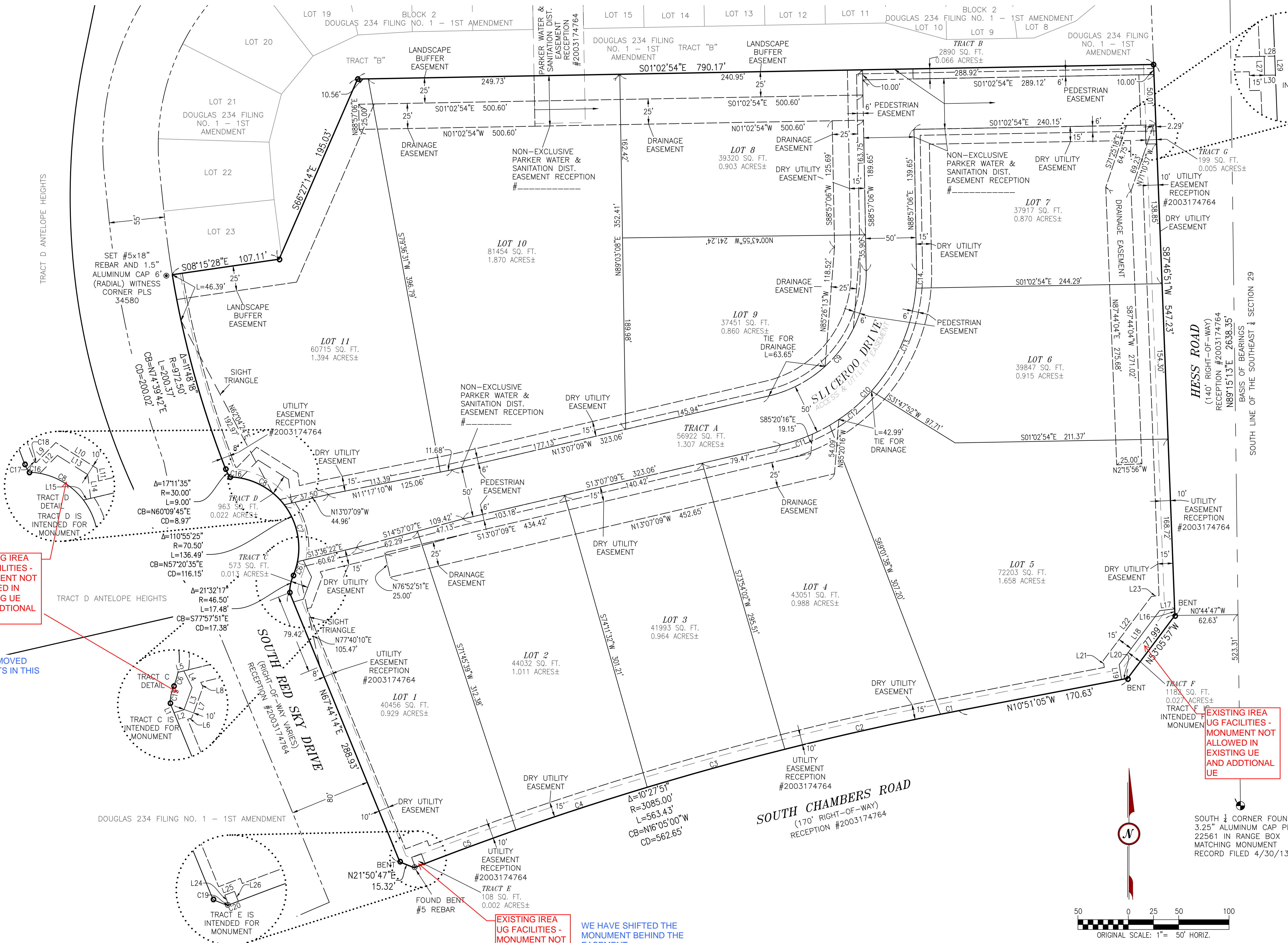
WE HAVE SHIFTED THE
MONUMENT LOCATION

LINE TABLE		
LINE #	LENGTH	BEARING
L1	10.11'	N67°44'14"E
L2	10.25'	N15°34'58"W
L3	23.51'	N69°54'40"W
L4	18.48'	S63°46'07"W
L5	5.98'	S13°36'22"E
L6	4.14'	S15°34'58"E
L7	32.92'	S69°54'40"E
L8	5.14'	N63°46'07"E
L9	27.81'	S45°47'03"E
L10	48.36'	S32°15'43"W
L11	12.43'	S82°40'36"W
L12	24.83'	S45°47'03"E
L13	35.55'	S32°15'43"W
L14	23.82'	S82°40'36"W
L15	7.47'	N13°07'09"W

LINE TABLE		
LINE #	LENGTH	BEARING
L16	6.52'	S87°46'51"W
L17	15.05'	S06°45'25"E
L18	66.87'	S53°05'57"E
L19	15.01'	N80°56'50"E
L20	6.27'	N10°51'05"W
L21	6.83'	N80°56'50"E
L22	79.65'	S53°05'57"E
L23	7.61'	S06°45'25"E
L24	10.51'	N68°54'46"E
L25	10.33'	S20°51'02"E
L26	10.45'	S69°08'07"W
L27	18.77'	N89°13'03"E
L28	10.37'	S01°02'54"E
L29	18.83'	S87°46'51"W
L30	10.84'	N00°46'57"W

LEGEND

- FOUND ALIQUOT CORNER AS DESCRIBED
- FOUND #5 REBAR & YELLOW PLASTIC CAP PLS 35593
- BOUNDARY LINE
- LOT LINE
- - - RIGHT-OF-WAY
- - - EASEMENT
- - - EXISTING EASEMENT



EXISTING AREA
UG FACILITIES -
MONUMENT NOT
ALLOWED IN
EXISTING UE
AND ADDITIONAL
UE

WE HAVE REMOVED
THESE TRACTS IN THIS
AREA

EXISTING AREA
UG FACILITIES -
MONUMENT NOT
ALLOWED IN
EXISTING UE
AND ADDITIONAL
UE

WE HAVE SHIFTED THE
MONUMENT BEHIND THE
EASEMENT

EXISTING AREA
UG FACILITIES -
MONUMENT NOT
ALLOWED IN
EXISTING UE
AND ADDITIONAL
UE

WE HAVE SHIFTED THE
MONUMENT BEHIND THE
EASEMENT



RICK
ENGINEERING COMPANY

9801 E. EASTERN AVE.
DENVER, CO 80112
PH: (303) 537-8020