

**CONTACT LIST**

**DEVELOPER**

REPUBLIC INVESTMENT GROUP  
5750 DTC PARKWAY, SUITE 160  
GREENWOOD VILLAGE, CO 80111  
PHONE: 720.897.6091  
CONTACT: GRANT NELSON

**ENGINEER**

RICK ENGINEERING COMPANY  
9801 E. EASTER AVE.  
CENTENNIAL, CO 80112  
PHONE: 303.537.8020  
CONTACT: TROY BALES

**SURVEYOR**

RICK ENGINEERING COMPANY  
5690 WEBSTER ST.  
ARVADA, CO 80002  
PHONE: 303.403.2433  
CONTACT: ROBERT HENNESSY

**PARKER PUBLIC WORKS**

20120 E. MAINSTREET  
PARKER, CO. 80138  
PHONE: 303.840.9546  
STREETS - MIKE WAUGH  
STORM WATER - JACOB JAMES

**TOWN OF PARKER POLICE DEPARTMENT**

19,600 E. PARKER SQUARE DR.  
PARKER, CO. 80134  
PHONE: 303.841.9800

**PARKER WATER AND SANITATION DISTRICT**

18100 E. WOODMAN DR.  
PARKER, CO. 80134  
PHONE: 303.841.4627

**FIRE & LIFE SAFETY**

20120 E. MAINSTREET  
PARKER, CO 80138  
PHONE: 303.205.3169  
CONTACT: RANDALL CAPRA

**UTILITY NOTIFICATION COMPANY OF COLORADO**

2801 SOUTH YOUNGFIELD ST, SUITE 301  
GOLDEN, CO 80401  
PHONE: 800.922.1987  
LOCAL CALLS: (811)

**XCEL ENERGY**

5909 E. 38TH AVE.  
DENVER, CO 80207  
PHONE: 303.329.1618  
CONTACT: MICHELLE O'NAN

**COMCAST**

6850 S. TUCSON WAY  
ENGLEWOOD, CO 80112  
PHONE: 720.490.3867  
CONTACT: KEVIN YOUNG

**CENTURY LINK**

9750 E. COSTILLA AVE.  
ENGLEWOOD, CO 80220  
PHONE: 303.792.6069  
CONTACT: WILLIAM BENSON

**COLORADO DEPARTMENT OF HEALTH**

4210 E. 11TH AVE.  
DENVER, CO  
PHONE: 303.320.8333

**INTERMOUNTAIN RURAL ELECTRIC ASSOCIATION**

5496 NORTH US HWY 85  
P.O. BOX DRAWER A  
SEDALIA, CO 80135  
PHONE: 303.688.3100  
CONTACT: JASON JENKS

**URBAN DRAINAGE FLOOD CONTROL DISTRICT (UDFCD)**

2480 W. 26TH AVE.  
SUITE 156-B  
DENVER, CO 80211  
PHONE: 303.455.6277  
CONTACT: MIKE SARMENTO

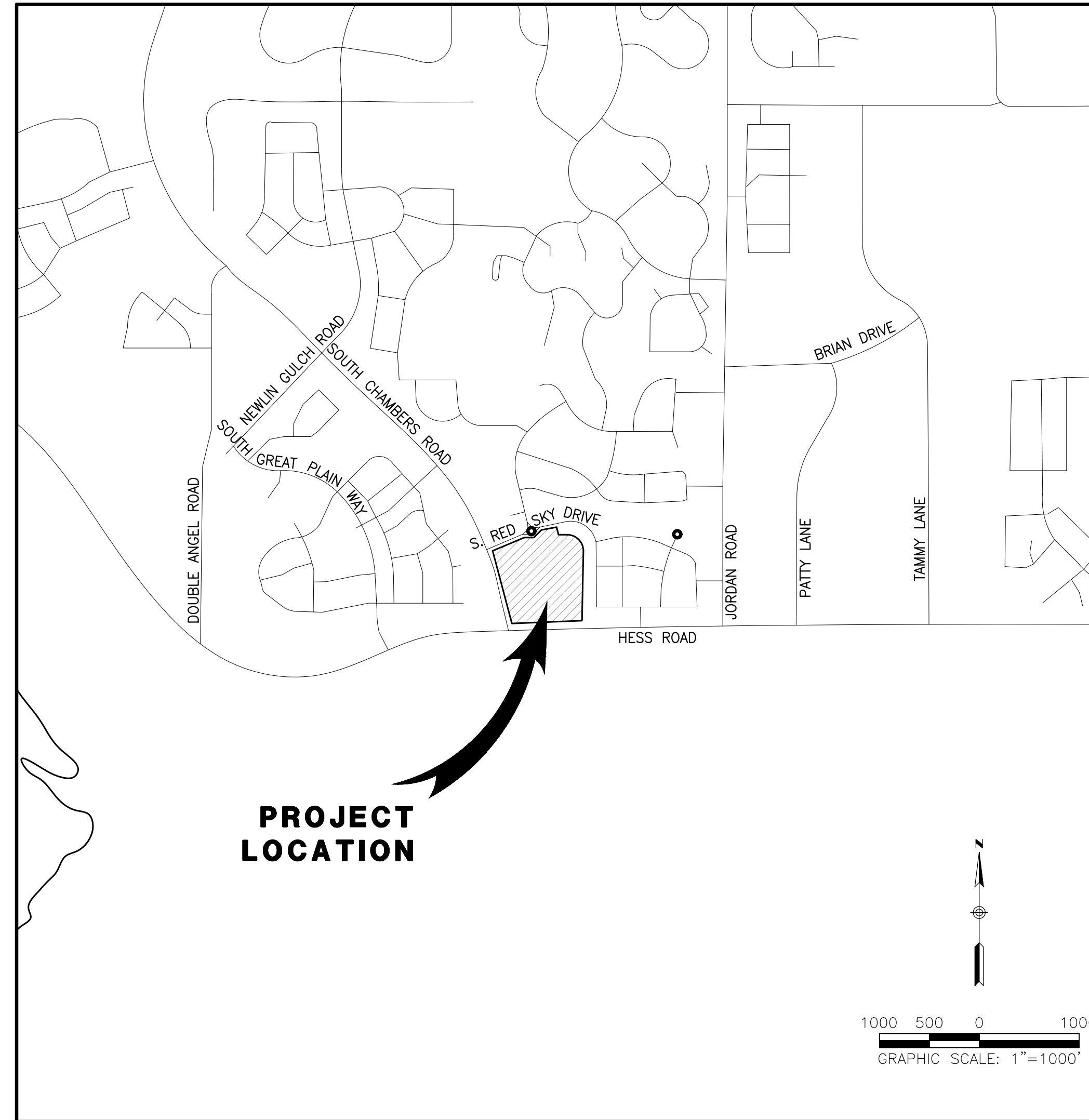
**SITE BENCHMARK & BASIS OF BEARINGS:**

THE PRIMARY BENCHMARK USED TO DETERMINE THE BASIS OF ELEVATIONS FOR THIS MAP IS BY GPS OBSERVATION NAVD88. A SITE BENCHMARK HAS BEEN SET AT THE NORTHWEST CORNER OF A DRAIN INLET ON CHAMBERS ROAD, APPROXIMATELY 200'± NORTH OF HESS ROAD. ELEVATION = 6075.31

THE BASIS OF BEARINGS IS THE SOUTH LINE OF THE SOUTHWEST QUARTER OF SECTION 29 TOWNSHIP 6 SOUTH, RANGE 66 WEST, 6TH PRINCIPAL MERIDIAN, BEARING SOUTH 89°15'13" WEST AS SHOWN ON FINAL PLAT DOUGLAS 234 FILING NO. 1.

**WATER & SEWER IMPROVEMENT PLANS FOR DOUGLAS 234, FILING NO. 6**

A PORTION OF THE SOUTHWEST QUARTER OF THE SOUTHWEST QUARTER OF SECTION 29, TOWNSHIP 6 SOUTH, RANGE 66 WEST, 6TH PRINCIPAL MERIDIAN, TOWN OF PARKER, COUNTY OF DOUGLAS, STATE OF COLORADO 13.80 ACRES, 11 COMMERCIAL LOTS



**VICINITY MAP**

SCALE 1"= 1000'

SHEET INDEX	
NO.	TITLE
1	COVER SHEET
2	NOTES
3	OVERALL UTILITY PLAN
4	WATER PLAN
5	WATER PLAN AND PROFILE
6	SLICEROO DR SEWER PLAN AND PROFILE
7	SEWER PLAN AND PROFILE
8-10	WATER DETAILS
11-12	SEWER DETAILS

**MATERIALS LIST**

ITEM	QTY.
48" Ø SSMH	6
8" SS PVC PIPE	1095 LF
SEWER CONNECTION	1
FIRE HYDRANT	4
8" GATE VALVE	5
LOW PT BLOW OFF	2
8"x6" TEE	4
16"x8" TEE	1
24"x8" TEE	1
8" 45° BEND	2
8" 22.5° BEND	3
8" 11.25° BEND	3
8" W PVC PIPE	1232 LF
WATER CONNECTION	2

**NOTE:**

THE BOUNDARY LINES AND TOPOGRAPHY FOR THIS PROJECT ARE BASED ON A FIELD SURVEY COMPLETED BY RICK ENGINEERING COMPANY. THE CONTRACTOR SHALL VERIFY THE EXISTING CONDITIONS PRIOR TO CONSTRUCTION AND SHALL IMMEDIATELY NOTIFY RICK ENGINEERING COMPANY AND THE CLIENT IN WRITING OF ANY DIFFERING CONDITIONS.

**STATEMENT:**

IT IS UNDERSTOOD AND AGREED THAT A REVIEW OF THESE PLANS AND SPECIFICATIONS BY OR ON BEHALF OF THE PARKER WATER AND SANITATION DISTRICT IS ONLY FOR PURPOSES OF THE DISTRICT AND IN NO WAY RELATES TO AN APPROVAL OF MATERIALS USED OR THE END PRODUCT OF THE DEVELOPER'S WORK. THE DEVELOPER CERTIFIES THAT IT HAS THOROUGHLY REVIEWED ALL PLANS, NOTES AND SPECIFICATIONS, EXAMINED THE PROJECT SITE AND ASCERTAINED ALL SOIL, GEOLOGICAL, GROUNDWATER AND OTHER CONDITIONS TO BE ENCOUNTERED THAT MIGHT AFFECT THE CONSTRUCTION AND FUTURE MAINTENANCE OF THE PROJECT. THE DEVELOPER FURTHER CERTIFIES THAT WORK CONTEMPLATED UNDER SUCH PLANS AND SPECIFICATIONS HAS BEEN PREPARED BY OR ON BEHALF OF THE DEVELOPER, THAT THE PROJECT IS THE RESPONSIBILITY OF THE DEVELOPER, AND THAT WORK IS UNDERTAKEN THEREON ONLY IN RELIANCE ON ITS OWN INVESTIGATION AND INFORMATION AND NOT ON ANY STATEMENTS, REPRESENTATIONS OR REPORTS IF ANY, THAT MAY HAVE BEEN MADE OR FURNISHED BY THE DISTRICT, ITS OFFICERS, AGENTS OR EMPLOYEES.

**LEGEND**

	EXISTING	PROPOSED
PROPERTY BOUNDARY	---	---
PROPERTY LINE	---	---
RIGHT-OF-WAY	---	---
CENTERLINE	---	---
CURB	---	---
CURB & GUTTER	---	---
DAYLIGHT LINE	---	---
EASEMENT	---	---
FLOWLINE	---	---
SLOPE	---	---
CONTOURS	---	---
WATER LINE	W	W
SANITARY SEWER LINE	S	S
STORM DRAIN LINE	SD	SD
GAS LINE	G	G
ELECTRIC LINE	E	E
FENCE-GENERAL USE	X	X
OVERHEAD WIRES	OHE	OHE
TYPICAL LATERALS	---	---
SANITARY SEWER MANHOLE	SS	SS
STORM DRAIN MANHOLE	SD	SD
STORM DRAIN INLET	---	---
FIRE HYDRANT	---	---
WATER VALVE	---	---
STREET LAMP	---	---
AC PAVING	---	---
CONCRETE	---	---
DG TRAIL/CRUSHER FINES	---	---

**ABBREVIATION**

AIR RELEASE VALVE	ARV
ASPHALT CONCRETE	AC
BEGIN CURB RETURN	BCR
BEGIN CURVE	BC
BEGIN VERTICAL CURVE	BVC
CENTERLINE	CL
END CURVE	EC
END VERTICAL CURVE	EVC
EXISTING GRADE	EG
FINISHED GRADE	FG
FINISHED SURFACE	FS
FLOW LINE	FL
GRADE BREAK	GB
HIGH POINT	HP
INVERT	INV
POINT OF CONNECTION	POC
PROPERTY LINE	PL
PUBLIC UTILITY EASEMENT	PUE
RIGHT-OF-WAY	ROW
TOP OF CURB	TC

**FIRE DEPARTMENT APPROVAL**

ALL FIRE HYDRANTS SHALL BE INSTALLED ACCORDING TO WATER UTILITY STANDARDS. THE NUMBER AND LOCATIONS OF THE FIRE HYDRANTS AS SHOWN ON THE OVERALL UTILITY PLAN ARE CORRECT AS SPECIFIED BY THE TOWN OF PARKER, COMMUNITY DEVELOPMENT DEPARTMENT.

*[Signature]* 02/26/2021  
FIRE CODE OFFICIAL OR DESIGNATED REPRESENTATIVE DATE

(NOTE - UNDERGROUND FIRE LINE (UFL) SUBMITTAL DOCUMENTS MUST MEET THE REQUIREMENT OF NFPA 24 WHEN SUBMITTING FOR REVIEW.

**WATER/SANITARY SEWER APPROVAL**

THE DISTRICT INSPECTOR MUST BE NOTIFIED AT LEAST 48 HOURS PRIOR TO START OF CONSTRUCTION. CALL PARKER WATER AND SANITATION DISTRICT AT 303-841-4627/ THE DISTRICT WILL PROVIDE PERIODIC INSPECTIONS OF THE WORK. 24 HOUR NOTICE TO THE INSPECTOR IS REQUIRED FOR SCHEDULING INSPECTIONS. ANY WORK ACCOMPLISHED WITHOUT THE APPROVAL OF THE INSPECTOR WILL BE SUBJECT TO REJECTION.

REVIEWED FOR CONFORMANCE TO PARKER WATER AND SANITATION DISTRICT STANDARDS.

BY: \_\_\_\_\_ (DISTRICT REPRESENTATIVE)

DATE SIGNED \_\_\_\_\_

APPROVED FOR CONSTRUCTION:  
PARKER WATER AND SANITATION DISTRICT

BY: \_\_\_\_\_ (DISTRICT ENGINEER)

DATE SIGNED \_\_\_\_\_

**WATER & SEWER IMPROVEMENT PLANS FOR DOUGLAS 234 FILING NO. 6 DOUGLAS COUNTY, COLORADO**

**RICK ENGINEERING COMPANY**  
9801 EAST EASTER AVE  
CENTENNIAL, CO 80112  
303.537.8020  
Tucson - San Diego - Riverside - Orange  
Sacramento - San Luis Obispo - Phoenix  
rickengineering.com



REVISIONS:		
NO.	DESCRIPTION	DATE:
1	-	-

SCALE: NTS  
DATE: 2/19/2021  
DRAWN BY: WD  
CHECKED BY: JS  
JOB NO: D01173-A

**COVER SHEET**

PROJECT NO. D01173-A  
DRAWING NO. 1  
SHEET NO. 1 OF 12 SHEETS

2021-02-19 10:50AM 2021-02-19 10:50AM 2021-02-19 10:50AM 2021-02-19 10:50AM 2021-02-19 10:50AM













- INSPECTION POLICY:**
1. ALL SERVICE INSPECTIONS MUST BE SCHEDULED AT LEAST 24 HOURS IN ADVANCE OF THE REQUESTED INSPECTION.
  2. SERVICE INSPECTIONS WILL OCCUR BETWEEN 1:00 P.M. AND 3:00 P.M. SPECIFIC INSPECTION TIMES ARE NOT AVAILABLE.
  3. IF THE CONTRACTOR IS NOT READY FOR INSPECTION WHEN THE INSPECTOR ARRIVES AT THE SITE OR SERVICE FAILS, A RE-INSPECTION WILL HAVE TO BE SCHEDULED IN ACCORDANCE WITH NOTES 1 AND 2 ABOVE AND A RE-INSPECTION FEE CHARGED.
  4. SHOULD THE SERVICE LINES BE DAMAGED BY LATER CONSTRUCTION, AN INSPECTION OF THE REPAIR WILL BE REQUIRED IN ACCORDANCE WITH NOTES 1 AND 2 ABOVE.
  5. THE CONTRACTOR SHALL LEAVE ALL PIPE AND FITTINGS EXPOSED FOR THE INSPECTOR TO OBSERVE. INSPECTORS WILL NOT ENTER ANY EXCAVATIONS TO CHECK MATERIALS. THE TOP LAYER OF BEDDING CAN BE ADDED AFTER THE INSPECTION HAS BEEN COMPLETED.
  6. ALL EXCAVATIONS SHALL BE IN ACCORDANCE WITH OSHA STANDARDS.
  7. LOTS WITHOUT BUILDING ADDRESSES BEFORE DISTRICT INSPECTION OR METER SET WILL FAIL AUTOMATICALLY.
  8. CONTRACTOR MUST BE PRESENT AT TIME OF INSPECTION. UNLESS COORDINATED WITH DISTRICT INSPECTOR.

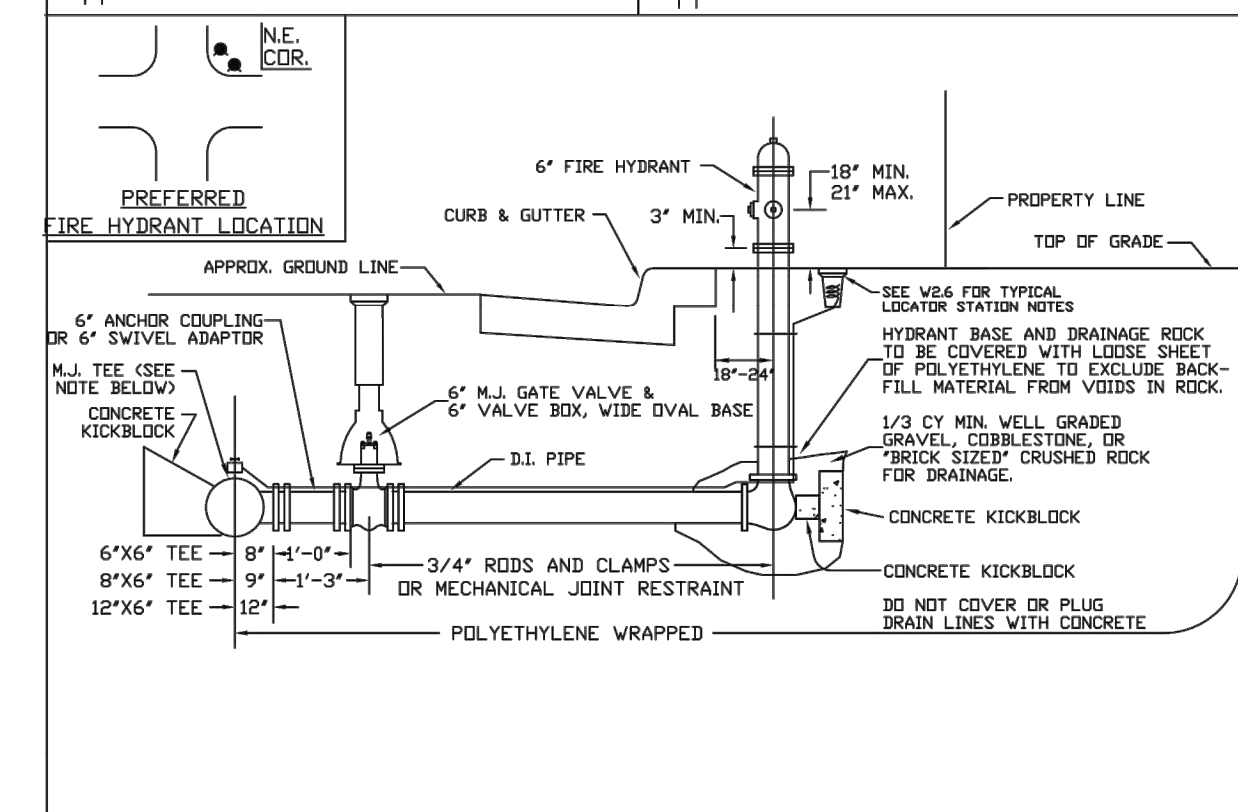
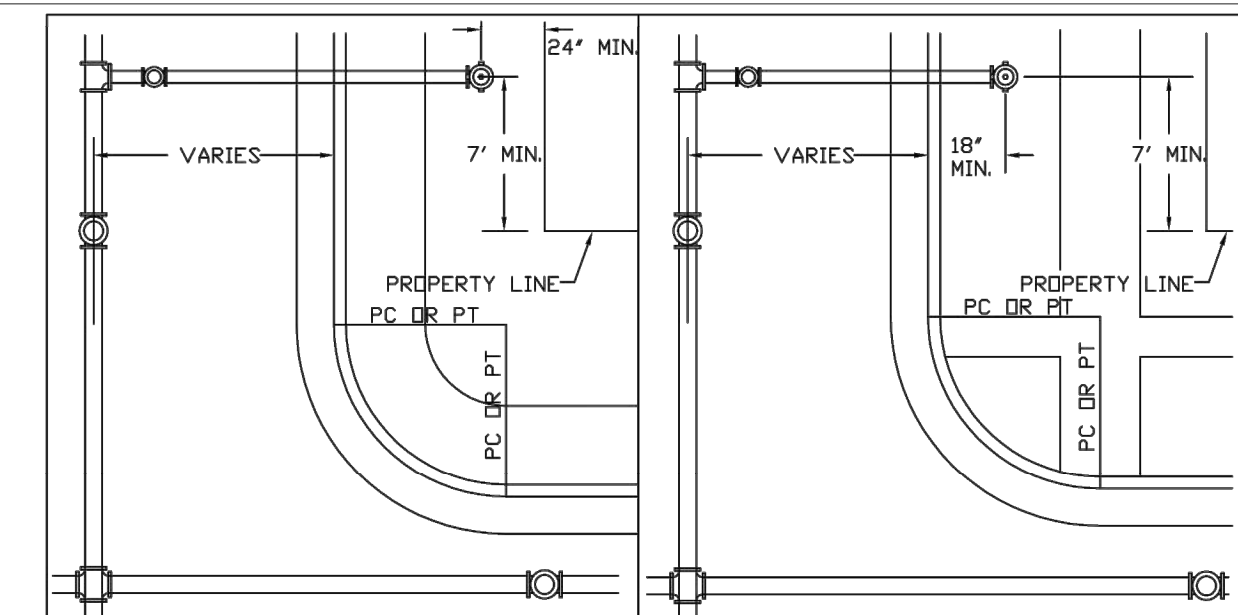
**INSTALLATION NOTES:**

- WATER**
1. ACCEPTABLE PIPE MATERIALS SHALL BE K-COPPER TUBING. (3/4" MIN.)
  2. APPROVED BEDDING TO BE SQUEEGEE.
  3. ONLY ONE COUPLING WILL BE ALLOWED BETWEEN THE STUB-IN AND BUILDING. COMPRESSION COUPLINGS WILL NOT BE ALLOWED ON NEW CONSTRUCTION. SILVER SOLDERED JOINTS MUST BE USED ON SERVICES LARGER THAN 3/4". SILVER SOLDERED JOINTS MUST BE INSPECTED BY PWSD PRIOR TO BURIAL. FLARED COUPLINGS WILL BE ALLOWED ON ALL SERVICES 3/4" AND SMALLER.
  4. A WATER SERVICE WHICH CROSSES A SEWER SERVICE CAN DO SO ONLY AT A 45-90° ANGLE. WATER SERVICES SHALL BE LOCATED A MINIMUM OF 18" ABOVE SEWER SERVICE.
  5. WATER SERVICE FOUNDATION PENETRATIONS SHALL BE WATERPROOFED USING MASTIC OR OTHER APPROVED METHOD, CRAWL SPACE REQUIRES CONTINUOUS COPPER WITH A 1" BURY.
  6. CURB STOP MUST BE PLUMB AND CENTERED OVER THE NUT. IT SHOULD BE STRAPPED TO THE METER PIT (RESIDENTIAL INSTALLATIONS) OR CENTERED OVER THE EASEMENT LINE (COMMERCIAL INSTALLATIONS). THE ASSEMBLY MUST BE AT OR SLIGHTLY ABOVE FINISHED GRADE.
  7. MOVED CURB BOXES MUST BE INSPECTED BY PWSD PRIOR TO BURIAL.
  8. WATERLINE MUST BE ATTACHED TO A SUPPORT BOARD THAT IS MOUNTED TO THE WALL.
  9. NO VOIDS ALLOWED UNDER WATERLINES FROM STOP BOX TO FOUNDATION.
  10. CURBSTOP BOXES AND METER PITS CANNOT BE IN DRIVEWAYS.
  11. ONLY 3/4" (JUMPER) PIPES (RESIDENCES) ARE ALLOWED. (JUMPER) PIPES WILL BE REMOVED PRIOR TO METER SET DATE.
  12. ALL SERVICES WILL BE PERMANENTLY MARKED ON CURB FACE AS FOLLOWS:  
 \* FOR SANITARY SEWER SERVICE  
 \* FOR WATER SERVICES
  13. NO SPLICES OR FLARED COUPLINGS ALLOWED ON SERVICES LARGER THAN 3/4". SILVER SOLDERED JOINTS MUST BE USED IN MOVING STOPBOXES ON SERVICES LARGER THAN 3/4". SILVER SOLDERED JOINTS MUST BE INSPECTED BY PWSD PRIOR TO BURIAL. FLARED COUPLINGS WILL BE ALLOWED ON ALL SERVICES 3/4" AND SMALLER.

PARKER WATER & SANITATION DISTRICT	
DISTRICT POLICIES & INSTALLATION NOTES FOR WATER SERVICES	
SCALE: NONE	DATE: 2/96
APPROVED: PVR	1/04 1/16 10/16
DIRECTOR OF ENGINEERING	

2016 REVISION

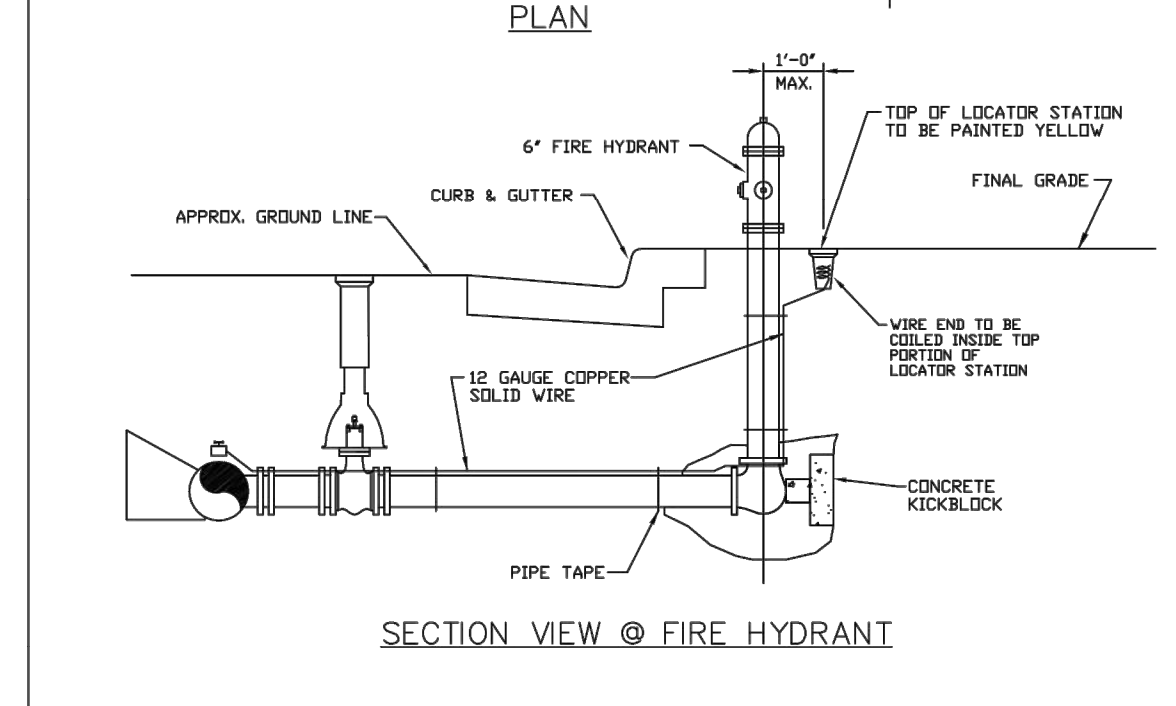
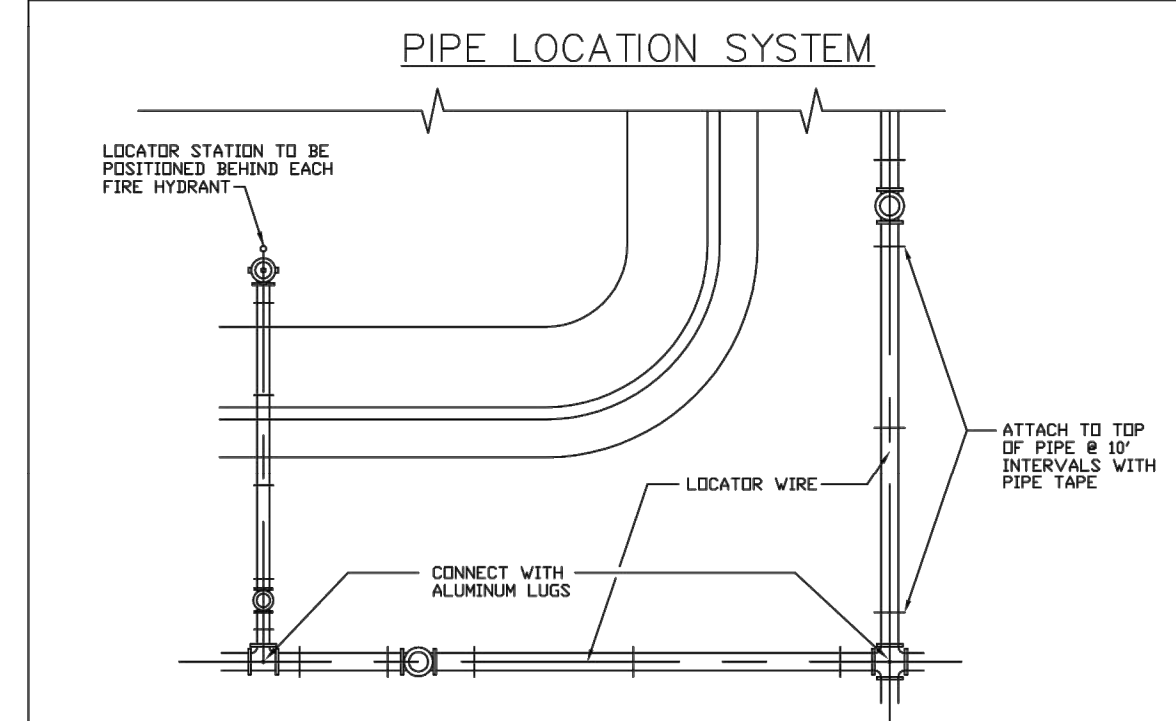
SHEET W1.1



PARKER WATER & SANITATION DISTRICT	
FIRE HYDRANTS LOCATION & INSTALLATION	
SCALE: NONE	DATE: 2/96
APPROVED: PVR	4/01 01/02 12/07 1/16
DIRECTOR OF ENGINEERING	

2016 REVISION

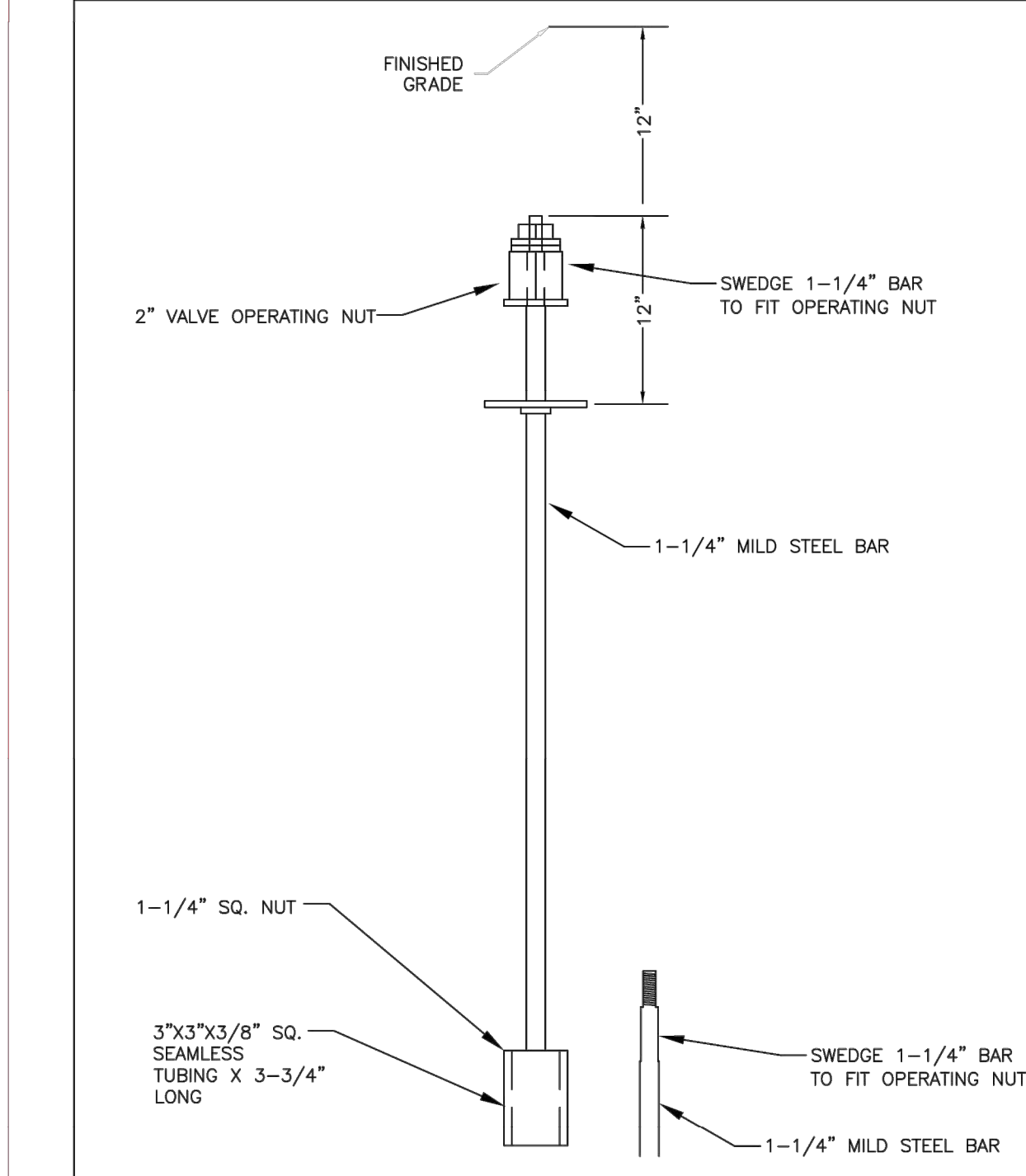
SHEET W2.5



PARKER WATER & SANITATION DISTRICT	
LOCATOR WIRE DETAILS	
SCALE: NONE	DATE: 2/96
APPROVED: PVR	4/01 01/02 01/16 10/16
DIRECTOR OF ENGINEERING	

2016 REVISION

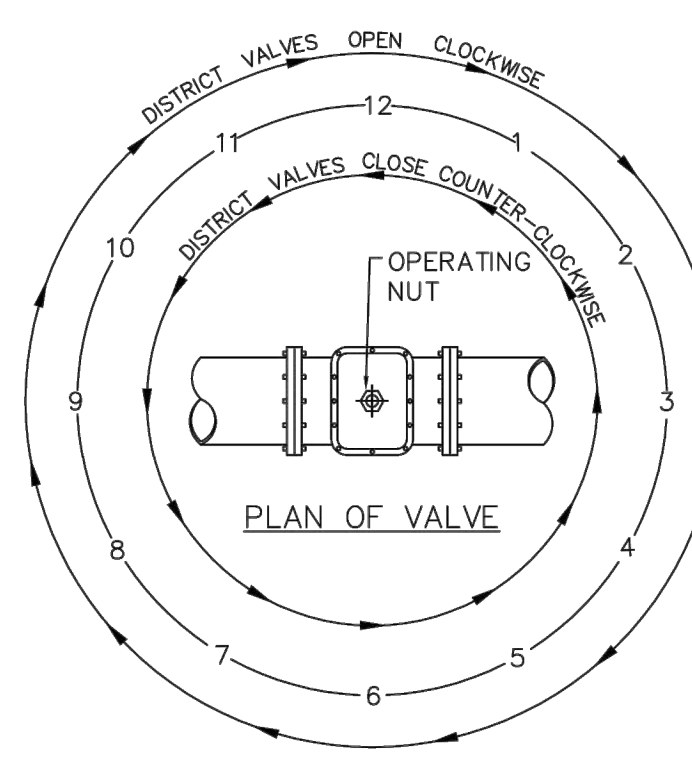
SHEET W2.6



PARKER WATER & SANITATION DISTRICT	
VALVE OPERATOR EXTENSION	
SCALE: NONE	DATE: 5/98
APPROVED: PVR	2/00 12/07 1/16 10/16
DIRECTOR OF ENGINEERING	

2016 REVISION

SHEET W3.3



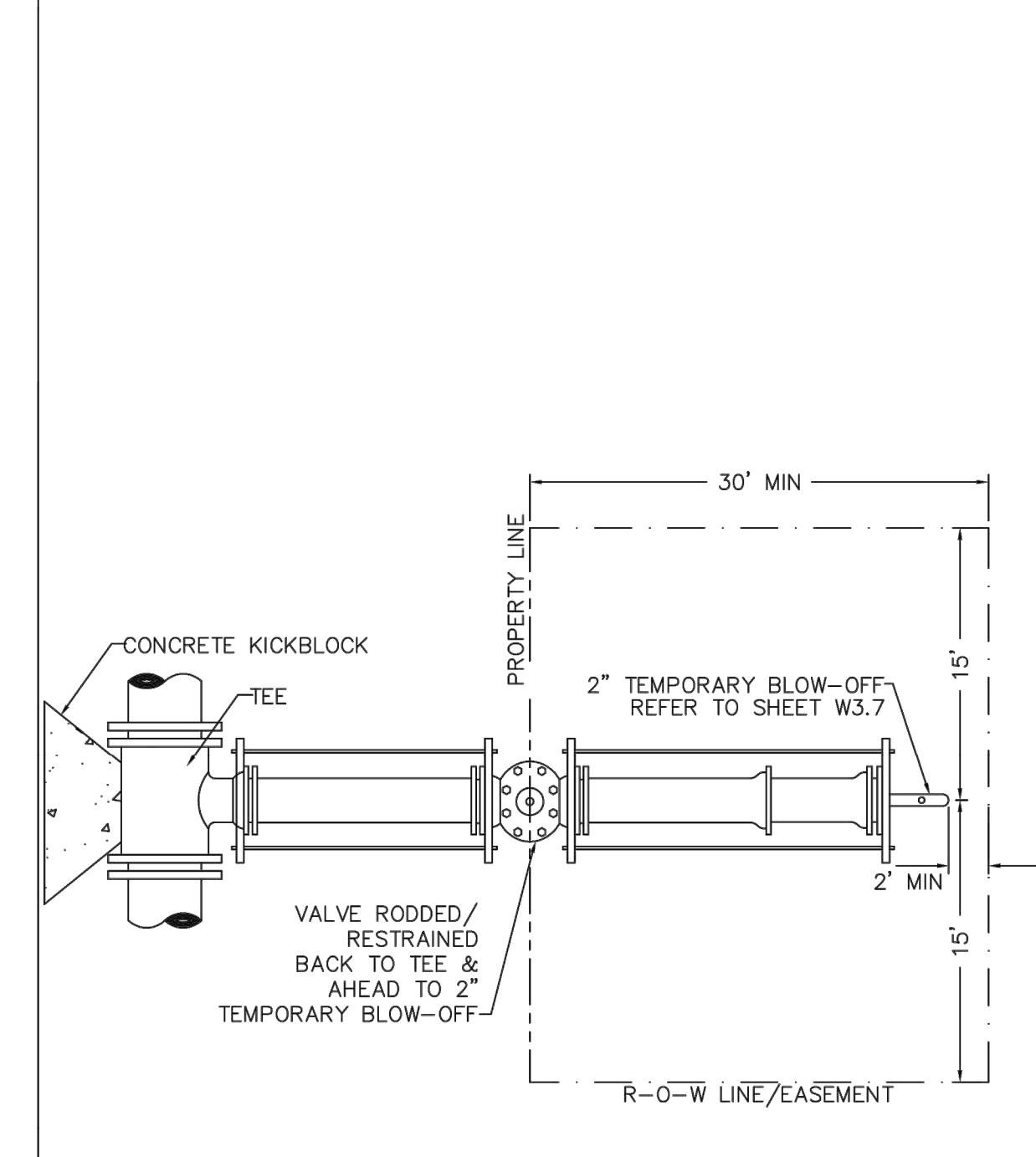
NOTE:  
ONLY RIGHT HAND OPENING VALVES ALLOWED.

**VALVE OPENING & CLOSING PROCEDURE**

PARKER WATER & SANITATION DISTRICT	
VALVE OPERATION	
SCALE: NONE	DATE: 2/96
APPROVED: PVR	1/16 10/16
DIRECTOR OF ENGINEERING	

2016 REVISION

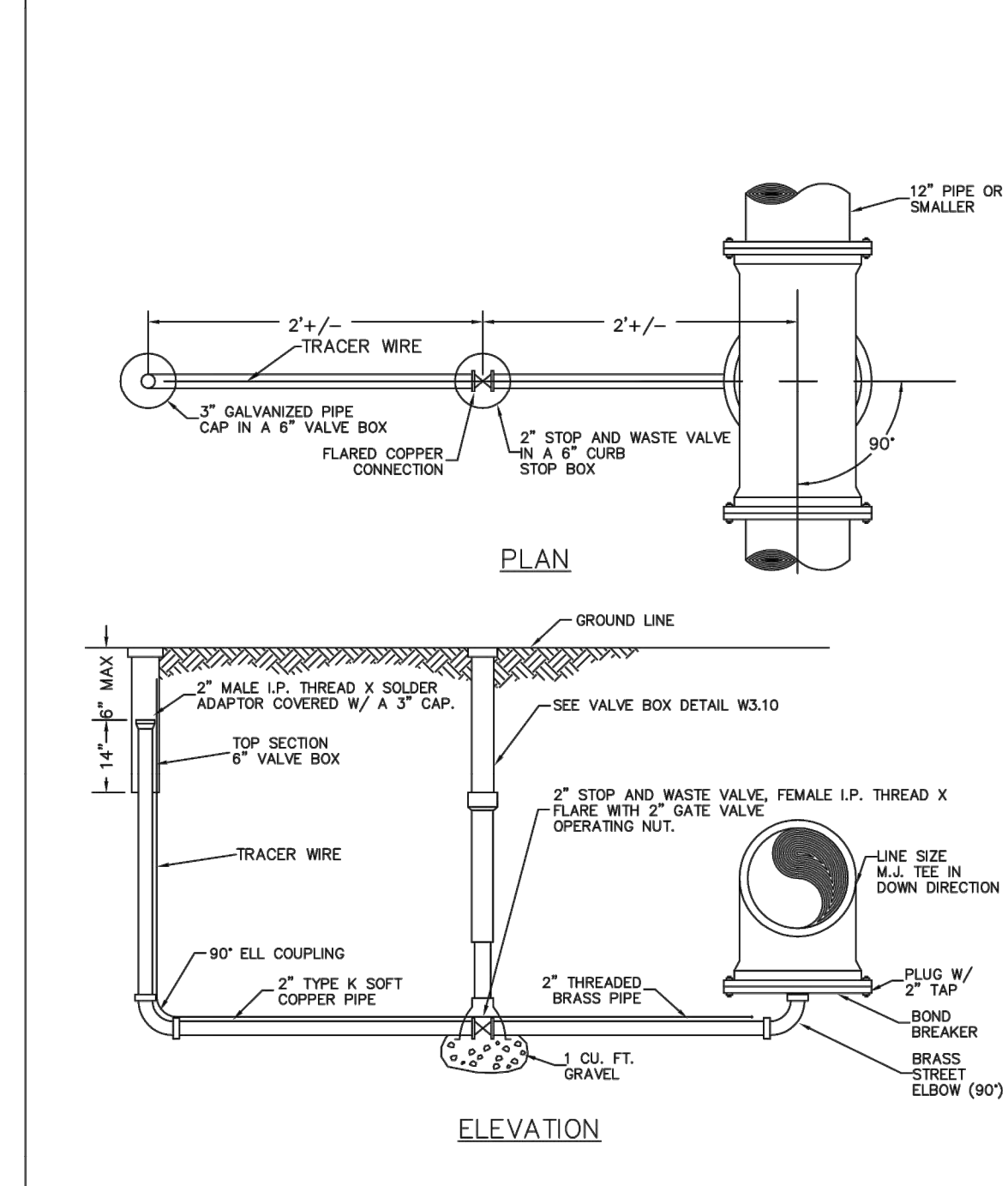
SHEET W3.4



PARKER WATER & SANITATION DISTRICT	
STUB-OUT CONFIGURATIONS	
SCALE: NONE	DATE: 2/96
APPROVED: PVR	1/16 10/16
DIRECTOR OF ENGINEERING	

2016 REVISION

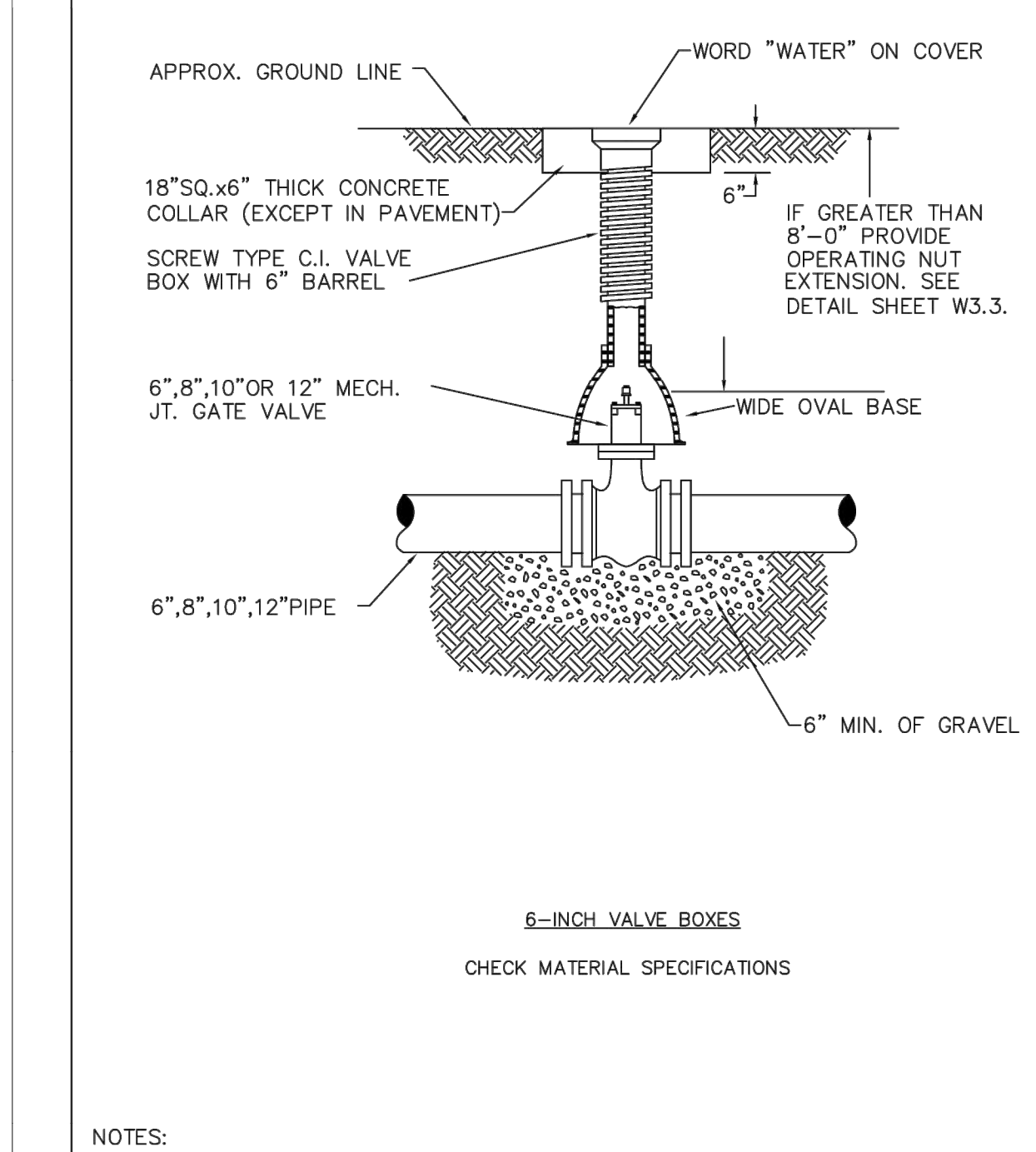
SHEET W3.5



PARKER WATER & SANITATION DISTRICT	
LOW POINT BLOW-OFF WITH SAND TRAP	
SCALE: NONE	DATE: 2/96
APPROVED: PVR	4/01 1/16 10/16
DIRECTOR OF ENGINEERING	

2016 REVISION

SHEET W3.6



PARKER WATER & SANITATION DISTRICT	
VALVE BOX DETAIL	
SCALE: NONE	DATE: 2/96
APPROVED: PVR	5/98 10/16 6/99 12/07 1/16
DIRECTOR OF ENGINEERING	

2016 REVISION

SHEET W3.10

**WATER & SEWER IMPROVEMENT PLANS FOR DOUGLAS 234 FILING NO. 6**  
DOUGLAS COUNTY, COLORADO

**RICK ENGINEERING COMPANY**  
9801 EAST EASTER AVE  
CENTENNIAL, CO 80112  
303.537.8020  
Tucson - San Diego - Riverside - Orange  
Sacramento - San Luis Obispo - Phoenix  
rickengineering.com



**811**  
Know what's below.  
Call before you dig.

REVISIONS:		
NO.	DESCRIPTION	DATE:
1		

SCALE: NTS  
DATE: 2/19/2021  
DRAWN BY: WD  
CHECKED BY: JS  
JOB NO: D01173-A

**WATER DETAILS**

PARKER WATER & SANITATION DISTRICT	
VALVE BOX DETAIL	
SCALE: NONE	DATE: 2/96
APPROVED: PVR	5/98 10/16 6/99 12/07 1/16
DIRECTOR OF ENGINEERING	

PROJECT NO. D01173-A  
DRAWING NO. 8  
SHEET NO. 8 OF 12 SHEETS





**INSPECTION POLICY:**

1. ALL SERVICE INSPECTIONS MUST BE SCHEDULED WITH THE DISTRICT OFFICE AT LEAST 24 HOURS IN ADVANCE OF THE REQUESTED INSPECTION.
2. IF THE CONTRACTOR IS NOT READY FOR INSPECTION WHEN THE INSPECTOR ARRIVES AT THE SITE, A RE-INSPECTION WILL HAVE TO BE SCHEDULED IN ACCORDANCE WITH NOTE 1 ABOVE AND A RE-INSPECTION FEE CHARGED.
3. SHOULD THE SERVICE LINES BE DAMAGED BY LATER CONSTRUCTION, AN INSPECTION OF THE REPAIR WILL BE REQUIRED IN ACCORDANCE WITH NOTES 1 AND 2 ABOVE.
4. THE CONTRACTOR SHALL LEAVE ALL PIPE AND FITTINGS EXPOSED FOR THE INSPECTOR TO OBSERVE. INSPECTORS WILL NOT ENTER ANY EXCAVATIONS TO CHECK MATERIALS. THE TOP LAYER OF BEDDING CAN BE ADDED AFTER THE INSPECTION HAS BEEN COMPLETED.
5. ALL EXCAVATIONS SHALL BE IN ACCORDANCE WITH OSHA STANDARDS.
6. LOTS WITHOUT BUILDING ADDRESSES OR LOT AND BLOCK NUMBERS BEFORE DISTRICT INSPECTION OR METER SET WILL FAIL AUTOMATICALLY.
7. CONTRACTOR MUST BE PRESENT AT TIME OF INSPECTION UNLESS COORDINATED WITH DISTRICT INSPECTOR.

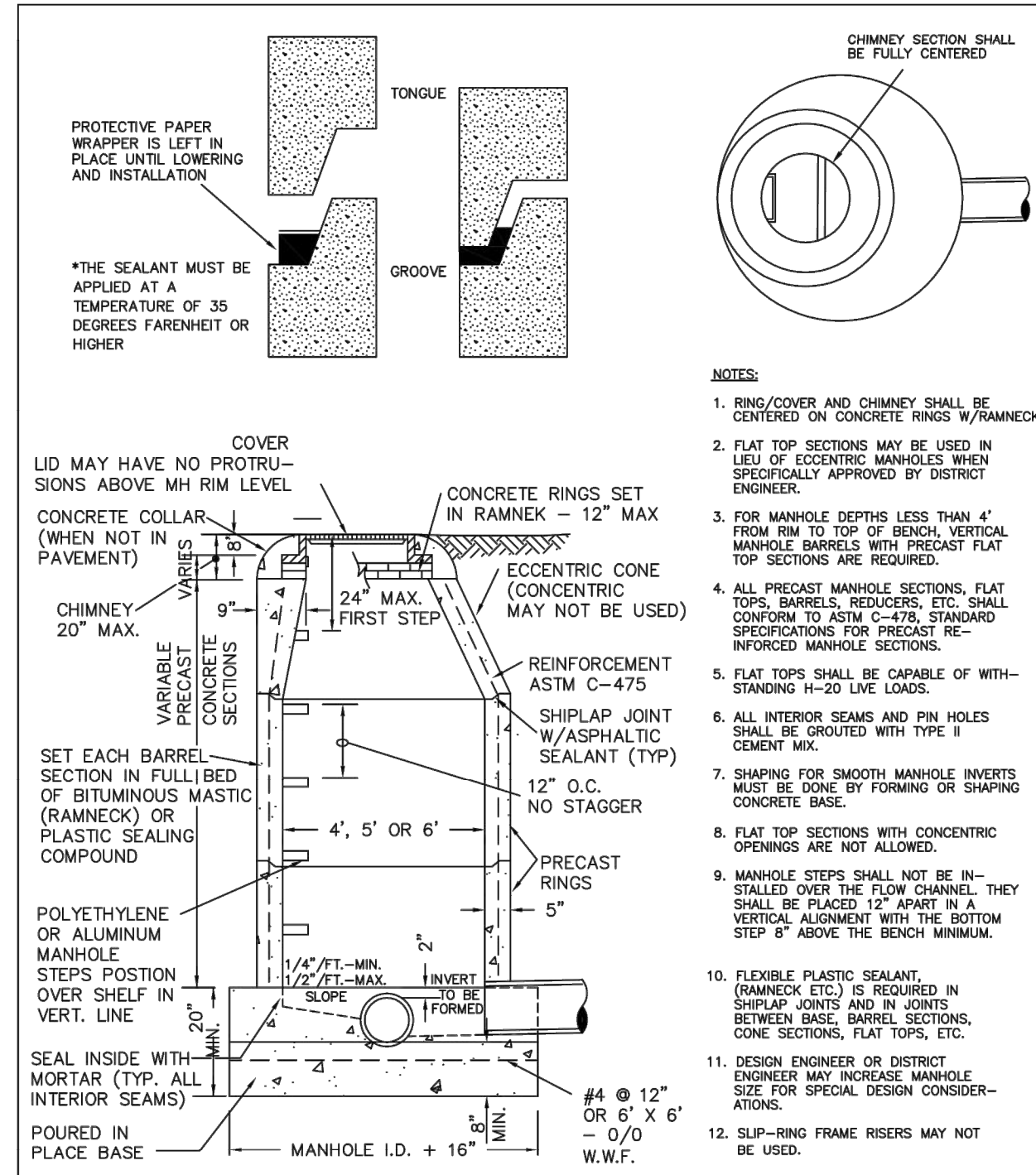
**INSTALLATION NOTES:**  
**SEWER**

1. ACCEPTABLE PIPE MATERIALS ARE TO BE SDR 35 PVC PIPE, ABS PIPE AND PVC SCHD 40 PIPE. APPROVED BEDDING IS TO BE SQUEEGE.
2. NO-HUB CLAMPS SHALL BE USED TO JOIN 2 MALE PIPE ENDS WITH A MAXIMUM DEFLECTION OF 3".
3. MINIMUM GRADE SHALL BE 2%.
4. INSTALLATION SHALL INCLUDE NO MORE THAN 3 BENDS. 90° BENDS ARE NOT ALLOWED. SOLVENT WELDED PIPE WILL NOT BE ALLOWED.
5. CLEAN-OUTS SHALL BE INSTALLED AT 100' INTERVALS AND EVERY CHANGE IN DIRECTION. CLEAN-OUTS ARE NOT REQUIRED FOR SERVICES LESS THAN 100' UNLESS THERE ARE CHANGES IN DIRECTION. PROVIDE DUAL CLEAN-OUT WITHIN 5 FEET OF FOUNDATION.
6. STRESSING OF THE PIPE BETWEEN FITTINGS WILL NOT BE ALLOWED.
7. SEWER SERVICE LINE SHALL NOT BE LOCATED UNDER CONCRETE SURFACE.
8. ALL SERVICES WILL BE PERMANENTLY MARKED ON CURB FACE AS FOLLOWS:  
 \* FOR SANITARY SEWER SERVICE  
 \* FOR WATER SERVICES

PARKER WATER & SANITATION DISTRICT	
DISTRICT POLICIES & INSTALLATION NOTES FOR SEWER SERVICES	
SCALE: NONE	DATE: 2/98
APPROVED: PVR	01/02 10/16
	1/08 1/16
DIRECTOR OF ENGINEERING	

2016 REVISION

SHEET S1.1

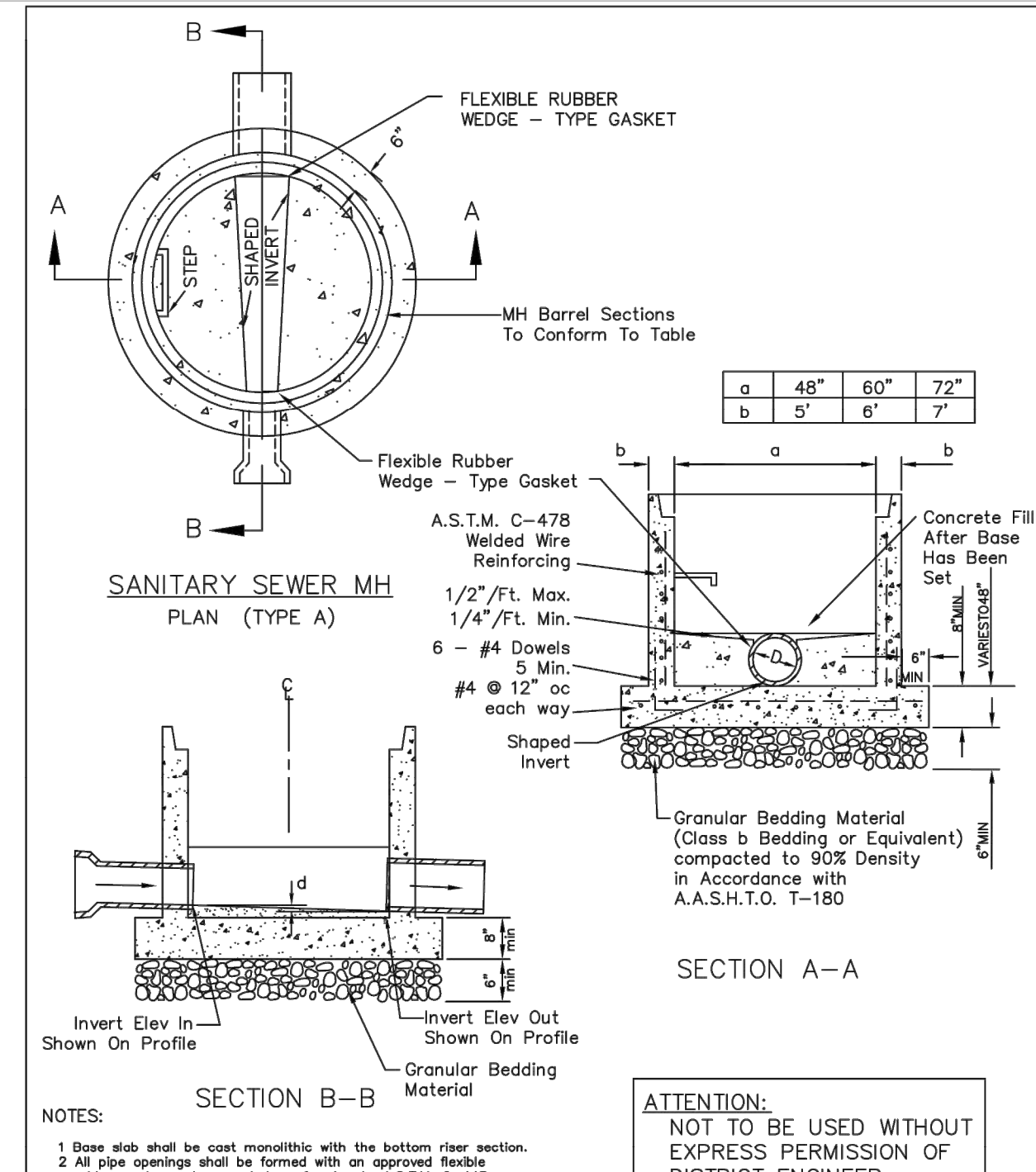


PIPE I.D.	MANHOLE I.D.
18" & SMALLER	4'-0"
21" TO 48"	5'-0"
54"	6'-0"
60" & LARGER	SPECIAL DESIGN

PARKER WATER & SANITATION DISTRICT	
PARKER MANHOLE ECCENTRIC CONE	
SCALE: NONE	DATE: 2/98
APPROVED: PVR	4/01 10/16
	01/02 1/08
DIRECTOR OF ENGINEERING	

2016 REVISION

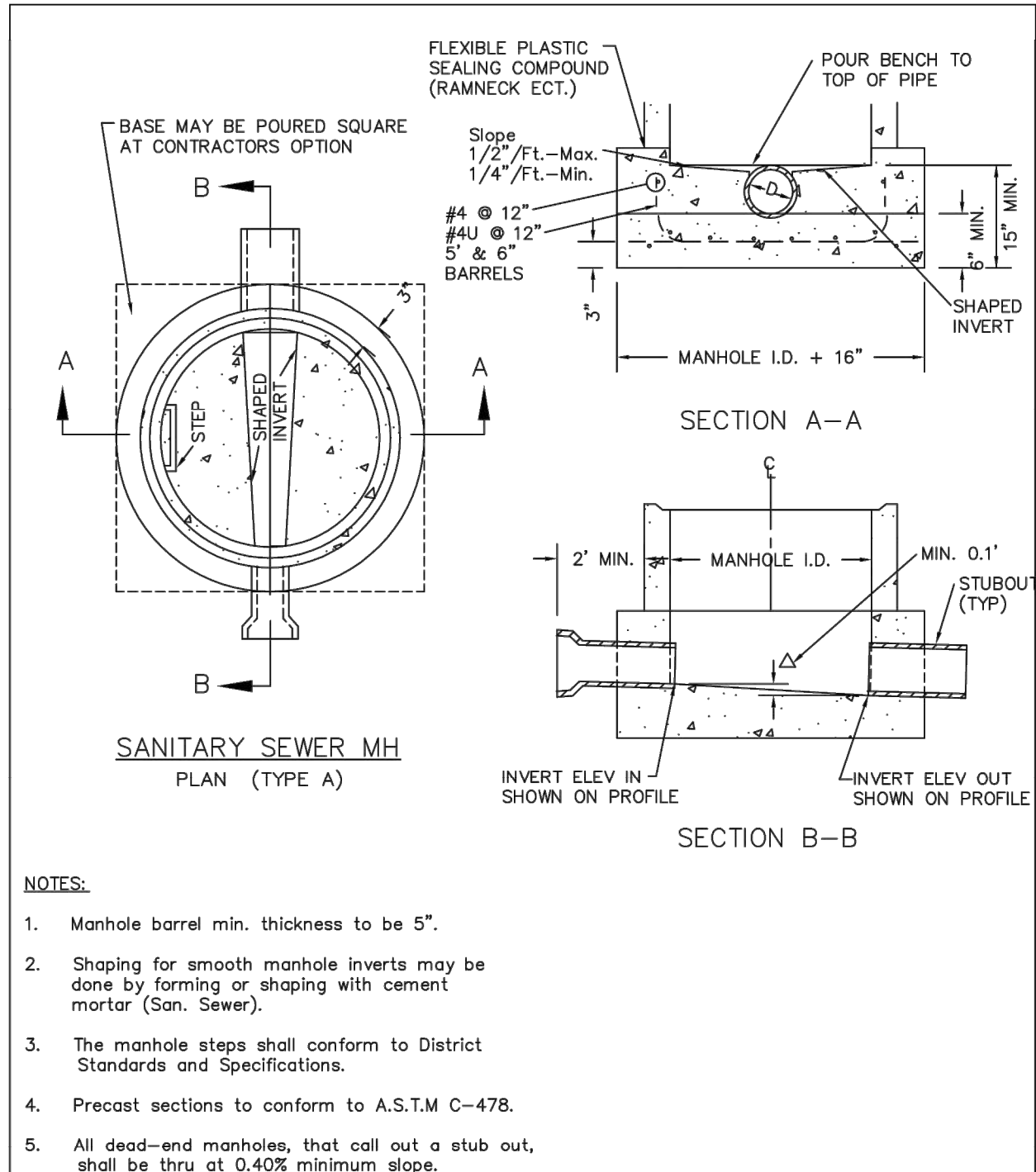
SHEET S3.1



PARKER WATER & SANITATION DISTRICT	
PRECAST MANHOLE BASE DETAIL	
SCALE: NONE	DATE: 2/98
APPROVED: PVR	01/02 10/16
DIRECTOR OF ENGINEERING	

2016 REVISION

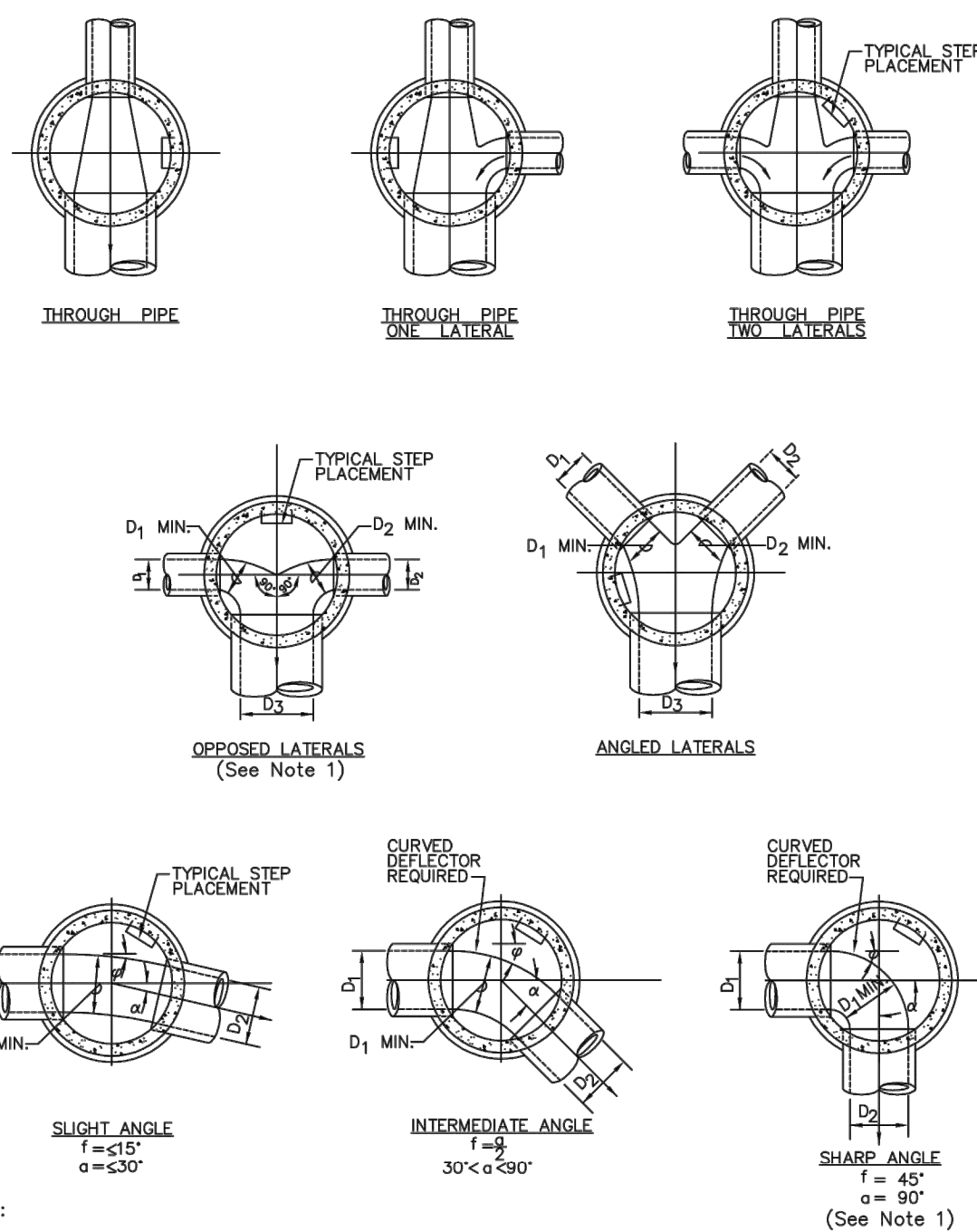
SHEET S3.4



PARKER WATER & SANITATION DISTRICT	
CAST-IN-PLACE MANHOLE BASE DETAIL	
SCALE: NONE	DATE: 2/98
APPROVED: PVR	01/02 10/16
DIRECTOR OF ENGINEERING	

2016 REVISION

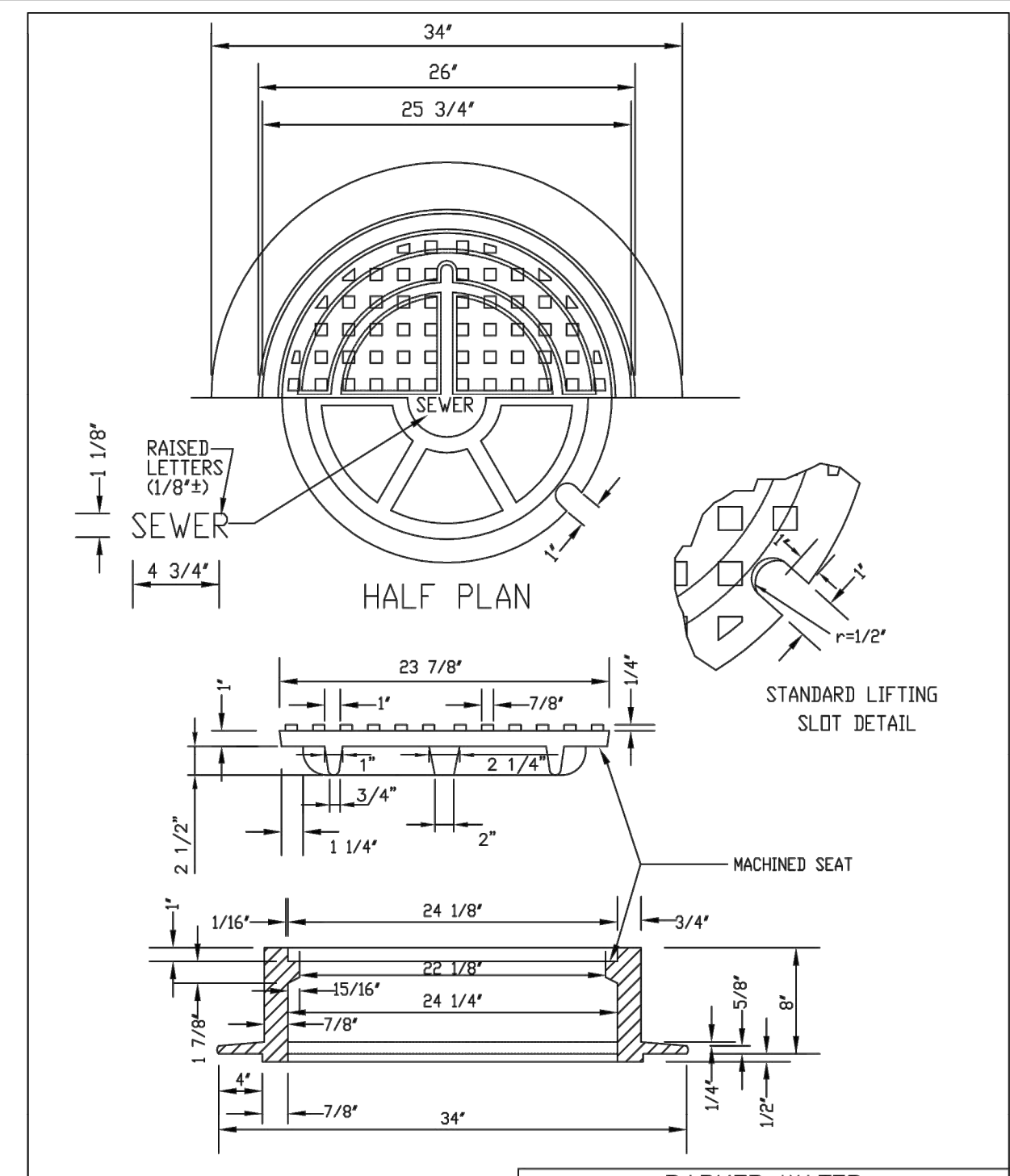
SHEET S3.5



PARKER WATER & SANITATION DISTRICT	
TYPICAL BASE CHANNELIZATION DETAILS	
SCALE: NONE	DATE: 2/98
APPROVED: PVR	01/16 10/16
DIRECTOR OF ENGINEERING	

2016 REVISION

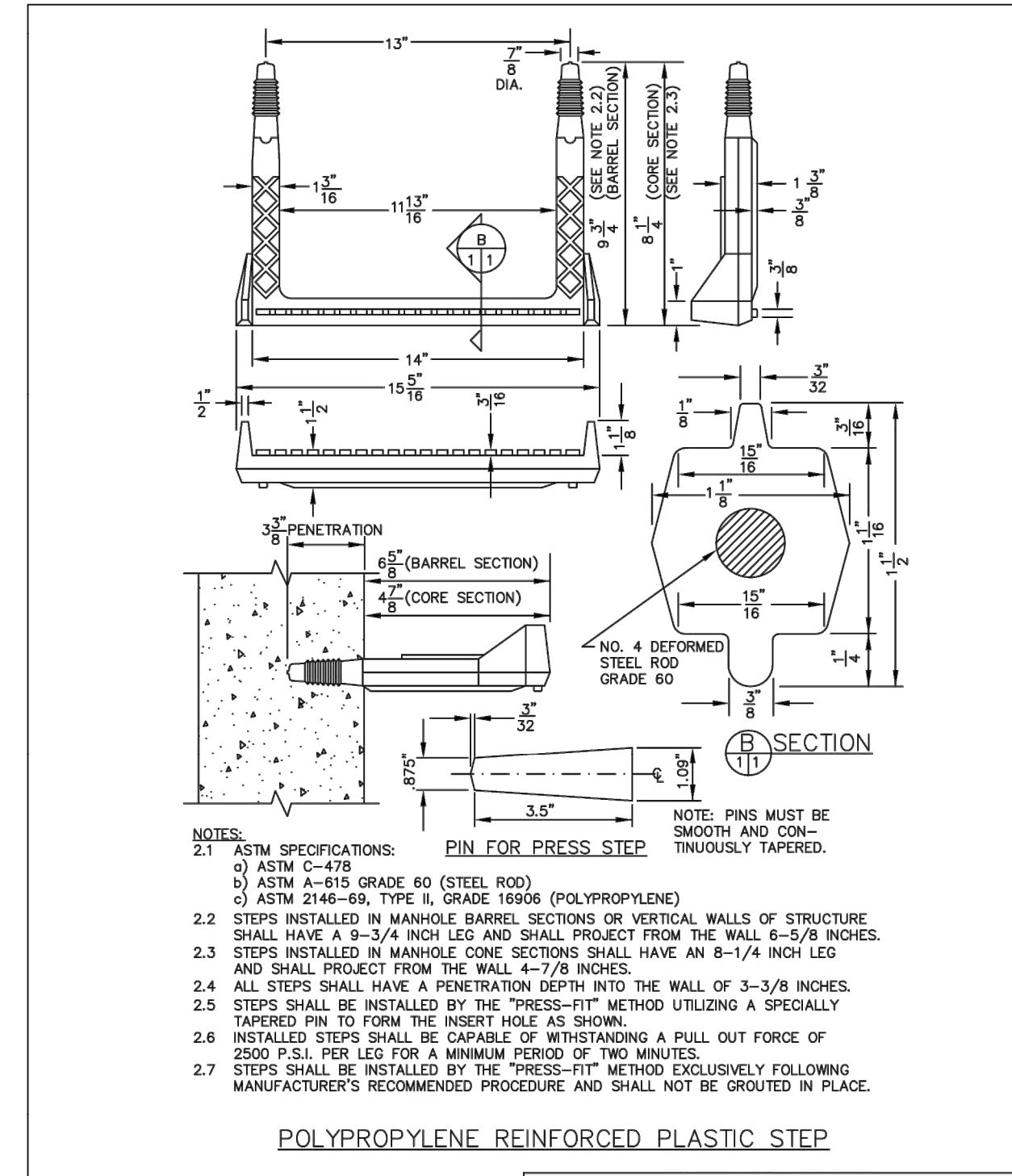
SHEET S3.7



PARKER WATER & SANITATION DISTRICT	
24" DIAMETER RING AND COVER	
SCALE: NONE	DATE: 2/98
APPROVED: PVR	01/16 10/16
DIRECTOR OF ENGINEERING	

2016 REVISION

SHEET S3.9



PARKER WATER & SANITATION DISTRICT	
POLYPROPYLENE REINFORCED PLASTIC MANHOLE STEP	
SCALE: NONE	DATE: 2/00
APPROVED: PVR	01/16 10/16
DIRECTOR OF ENGINEERING	

2016 REVISION

SHEET S3.11

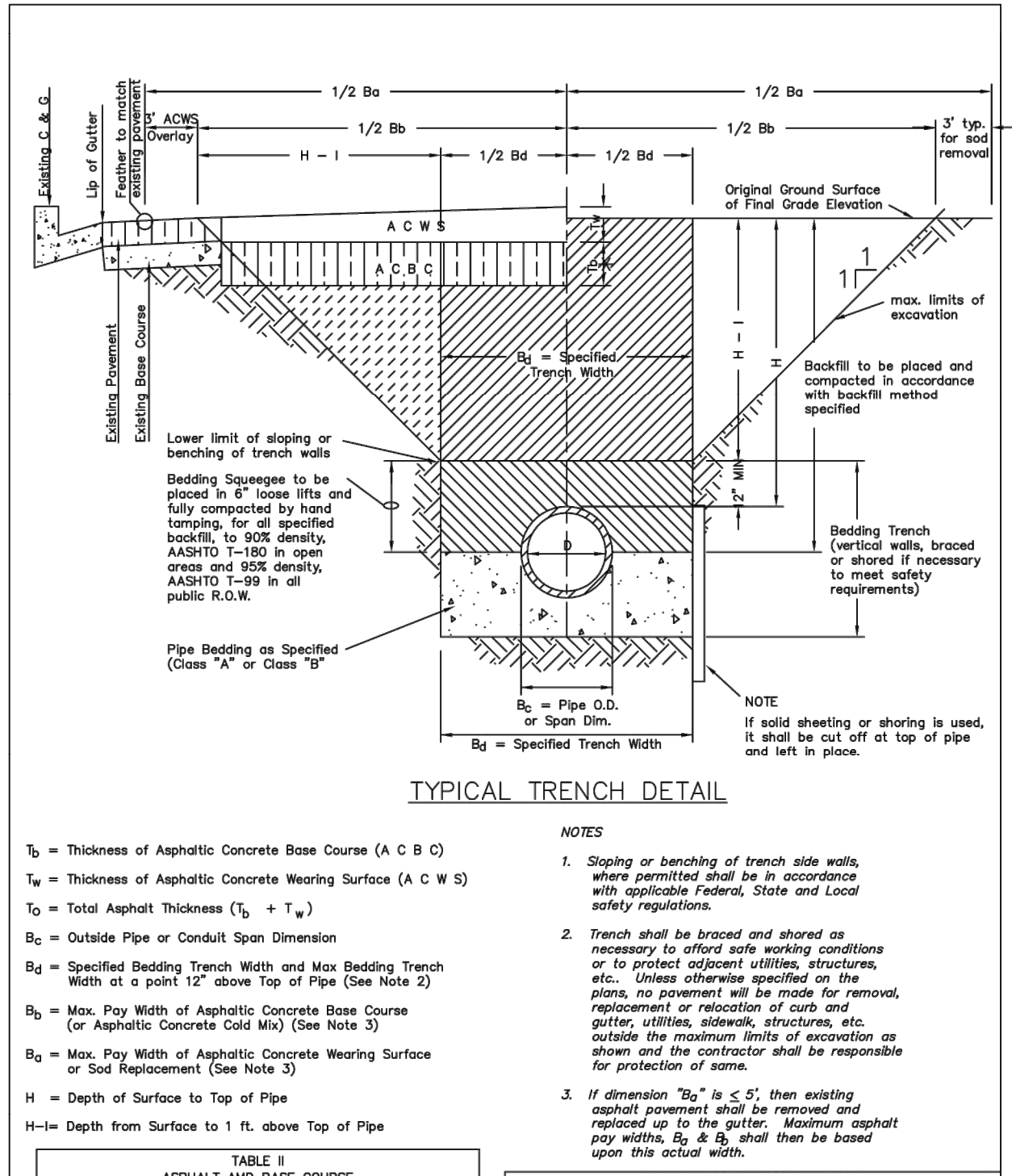


TABLE I ASPHALT AND BASE COURSE REPLACEMENT SCHEDULE			
STREET WIDTH	ASPHALTIC BASE COURSE (%)	ASPHALTIC WEARING SURFACE (%)	TOTAL THICKNESS (%)
UP TO 36'	4"	2"	6"
36' TO 44'	4"	3"	7"
44' TO 48'	5"	3"	8"
WIDER THAN 48'	6"	3"	9"

PARKER WATER & SANITATION DISTRICT	
SEWER TRENCHING AND BEDDING DETAIL	
SCALE: NONE	DATE: 2/98
APPROVED: PVR	5/98 1/16 10/16
DIRECTOR OF ENGINEERING	

2016 REVISION

SHEET S4.1

**WATER & SEWER IMPROVEMENT PLANS FOR DOUGLAS 234 FILING NO. 6**  
DOUGLAS COUNTY, COLORADO

**RICK ENGINEERING COMPANY**  
9801 EAST EASTER AVE  
CENTENNIAL, CO 80112  
303.537.8020  
Tucson - San Diego - Riverside - Orange  
Sacramento - San Luis Obispo - Phoenix  
rickengineering.com



REVISIONS:		
NO.	DESCRIPTION	DATE:

SCALE: NTS  
DATE: 2/19/2021  
DRAWN BY: WD  
CHECKED BY: JS  
JOB NO: D01173-A

**SEWER DETAILS**

PROJECT NO. D01173-A  
DRAWING NO. 11  
SHEET NO. 11 OF 12 SHEETS

