

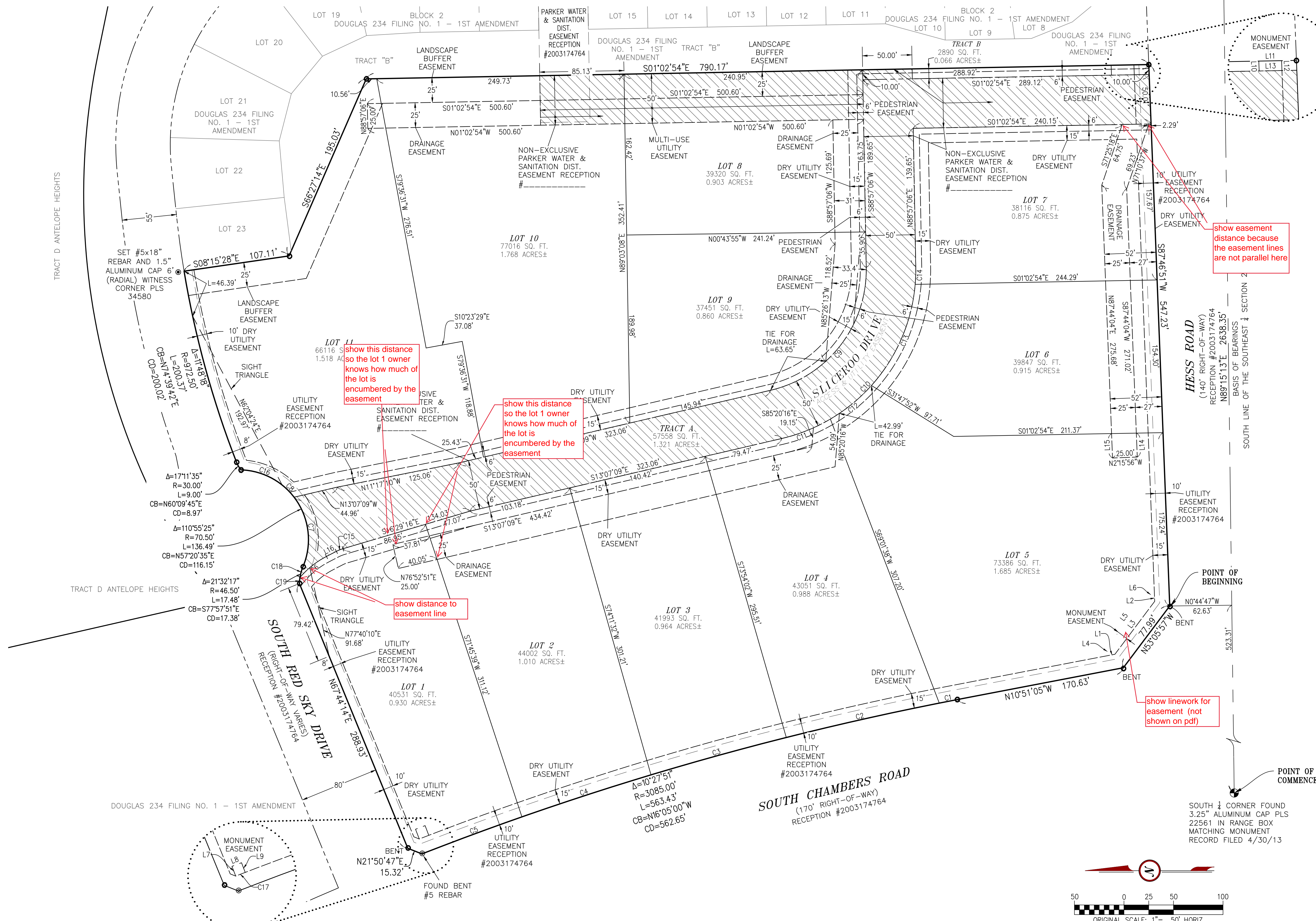


# DOUGLAS 234 FILING 6

## A REPLAT OF LOT 1, BLOCK 10, DOUGLAS 234 FILING NO. 1, BEING LOCATED IN SOUTHEAST QUARTER OF SECTION 29, TOWNSHIP 6 SOUTH, RANGE 66 WEST 6TH P.M. TOWN OF PARKER, COUNTY OF DOUGLAS, STATE OF COLORADO

### SHEET 2 OF 2

SOUTHEAST CORNER SECTION 29 FOUND 3.25" ALUMINUM CAP PLS 35593 IN RANGE BOX MATCHING MONUMENT RECORD FILED 11/29/05



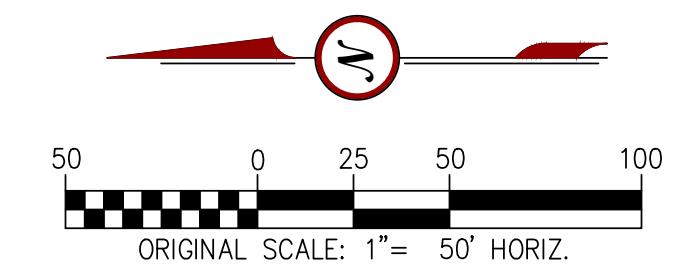
CURVE TABLE					
CURVE #	LENGTH	RADIUS	DELTA	CHORD BEARING	CHORD LENGTH
C1	18.63'	3085.00'	000°20'45"	N11°01'27"W	18.63'
C2	158.30'	3085.00'	002°56'24"	N12°40'02"W	158.28'
C3	141.78'	3085.00'	002°38'00"	N15°27'13"W	141.77'
C4	137.05'	3085.00'	002°32'43"	N18°02'35"W	137.04'
C5	96.12'	3085.00'	001°47'07"	N20°12'30"W	96.11'
C6	34.38'	88.00'	022°23'01"	N38°24'40"W	34.16'
C7	74.09'	70.50'	060°12'42"	N82°41'57"E	70.73'
C8	17.18'	70.50'	013°57'52"	N45°36'40"E	17.14'
C9	170.02'	125.00'	077°55'45"	S52°05'01"E	157.21'
C10	238.02'	175.00'	077°55'45"	S52°05'01"E	220.09'
C11	53.00'	175.00'	017°21'08"	S21°47'43"E	52.80'
C12	53.80'	175.00'	017°36'54"	S39°16'43"E	53.59'
C13	113.20'	175.00'	037°03'44"	S66°37'03"E	111.24'
C14	18.02'	175.00'	005°53'59"	S88°05'54"E	18.01'
C15	7.12'	38.00'	010°44'07"	N21°51'05"W	7.11'
C16	45.22'	70.50'	036°44'51"	N20°15'18"E	44.45'
C17	10.29'	9823.07'	000°03'36"	N21°11'47"W	10.29'
C18	11.37'	46.50'	014°00'43"	N74°12'04"W	11.34'
C19	6.11'	46.50'	007°31'34"	N84°58'12"W	6.10'

LINE TABLE		
LINE #	LENGTH	BEARING
L1	7.29'	N10°51'05"W
L2	7.26'	N87°46'51"E
L3	66.87'	S53°05'57"E
L4	7.76'	N80°56'50"E
L5	66.87'	S53°05'57"E
L6	8.16'	S06°45'25"E
L7	10.51'	N68°54'46"E
L8	10.33'	S20°51'02"E
L9	10.45'	S69°08'07"W
L10	10.00'	N87°46'51"E
L14	24.16'	N87°44'04"E
L15	24.69'	N87°44'04"E
L16	11.25'	S27°13'09"E

**LEGEND**

- FOUND ALIQUOT CORNER AS DESCRIBED
- FOUND #5 REBAR & YELLOW PLASTIC CAP PLS 35593
- BOUNDARY LINE
- LOT LINE
- RIGHT-OF-WAY
- - - EASEMENT
- - - EXISTING EASEMENT

PARKER WATER & SANITATION DISTRICT EASEMENT



**RICK ENGINEERING COMPANY**

8801 E. EASTER AVE.  
CENTENNIAL, CO 80112  
PH. (303) 537-9020