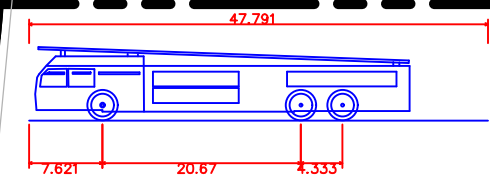
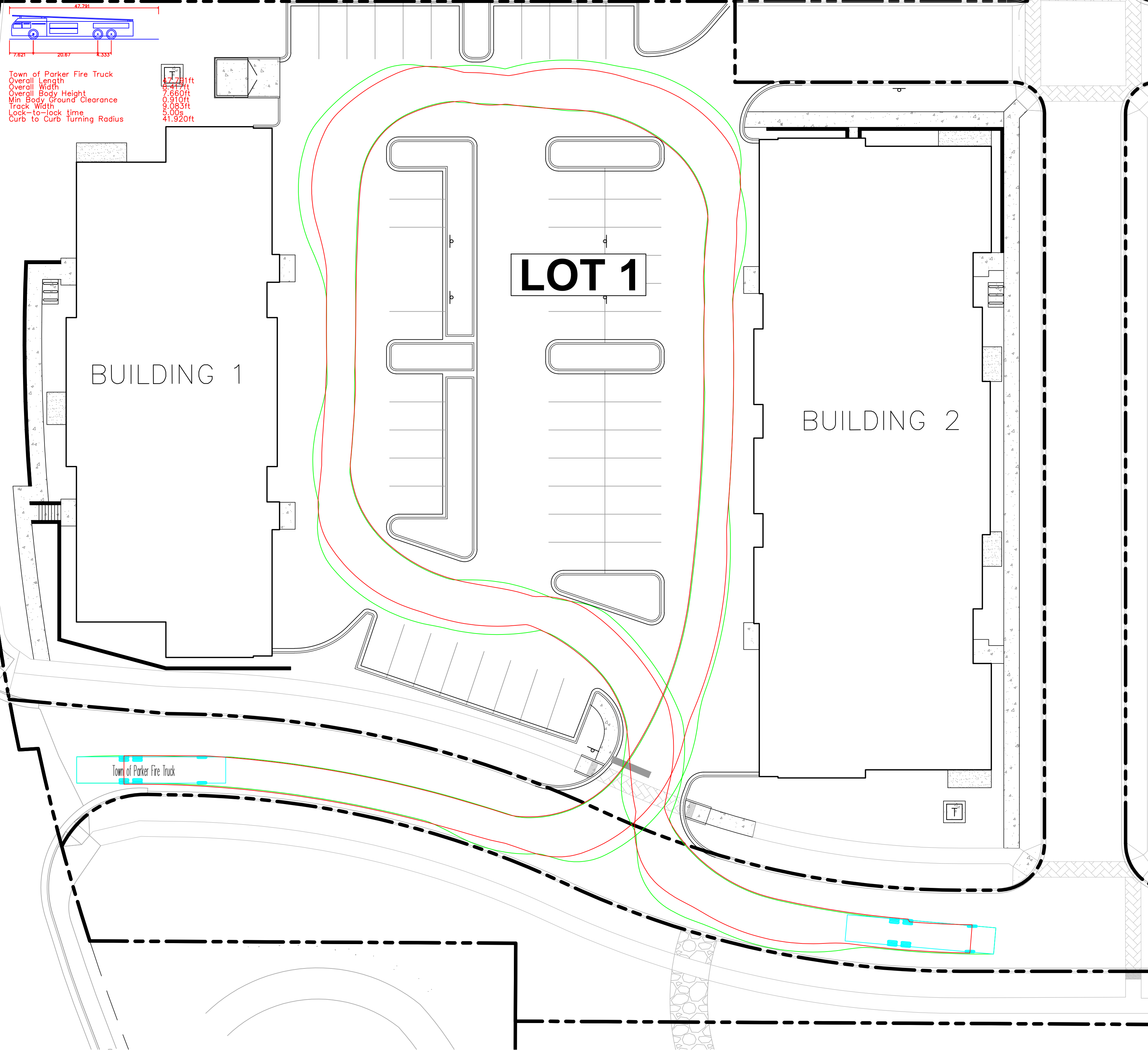


K:\DENVER_CADD\096481002 - Parker & Pine MF\CAADD\096481002 - Fire Truck Autoturns\096481002_FT_AT.dwg - KOSKRECH Job: 10/16/2016 10:57 AM
 THIS DOCUMENT CONTAINS THE PROPERTY LINE AND CONCEPTS AND DESIGN EXPRESSIONS OF THE ARCHITECT AND ENGINEER. IT IS INTENDED ONLY FOR THE USE OF THE ARCHITECT AND ENGINEER AND IS NOT TO BE REPRODUCED OR TRANSMITTED IN ANY FORM OR BY ANY MEANS, ELECTRONIC OR MECHANICAL, INCLUDING PHOTOCOPYING, RECORDING, OR BY ANY INFORMATION STORAGE AND RETRIEVAL SYSTEM, WITHOUT THE WRITTEN PERMISSION OF THE ARCHITECT AND ENGINEER.

TWENTY MILE ROAD



Town of Parker Fire Truck
 Overall Length 42.21ft
 Overall Width 7.82ft
 Overall Body Height 8.47ft
 Min Body Ground Clearance 0.91ft
 Track Width 0.083ft
 Lock-to-lock time 5.08s
 Curb to Curb turning Radius 41.920ft



LEGEND

- PROPERTY LINE
- PROPOSED CONCRETE CURB
- EXISTING CURB

NO.	REVISION	BY	DATE	APPR

Kimley»Horn
 2020 KIMLEY-HORN AND ASSOCIATES, INC.
 4582 South Ulster Street, Suite 1500
 Denver, Colorado 80237 (303) 228-2300

DESIGNED BY: DLS
 DRAWN BY: JRK
 CHECKED BY: DLS
 DATE: 12/11/20

PARKER AND PINE FILING NO. 2 LOTS 1-3
 PARKER, CO
 MULTI-FAMILY CONSTRUCTION DOCUMENTS
 LOT 1 FIRE TRUCK AUTOTURN

PRELIMINARY
 FOR REVIEW ONLY
 NOT FOR
 CONSTRUCTION
Kimley»Horn
 Kimley-Horn and Associates, Inc.

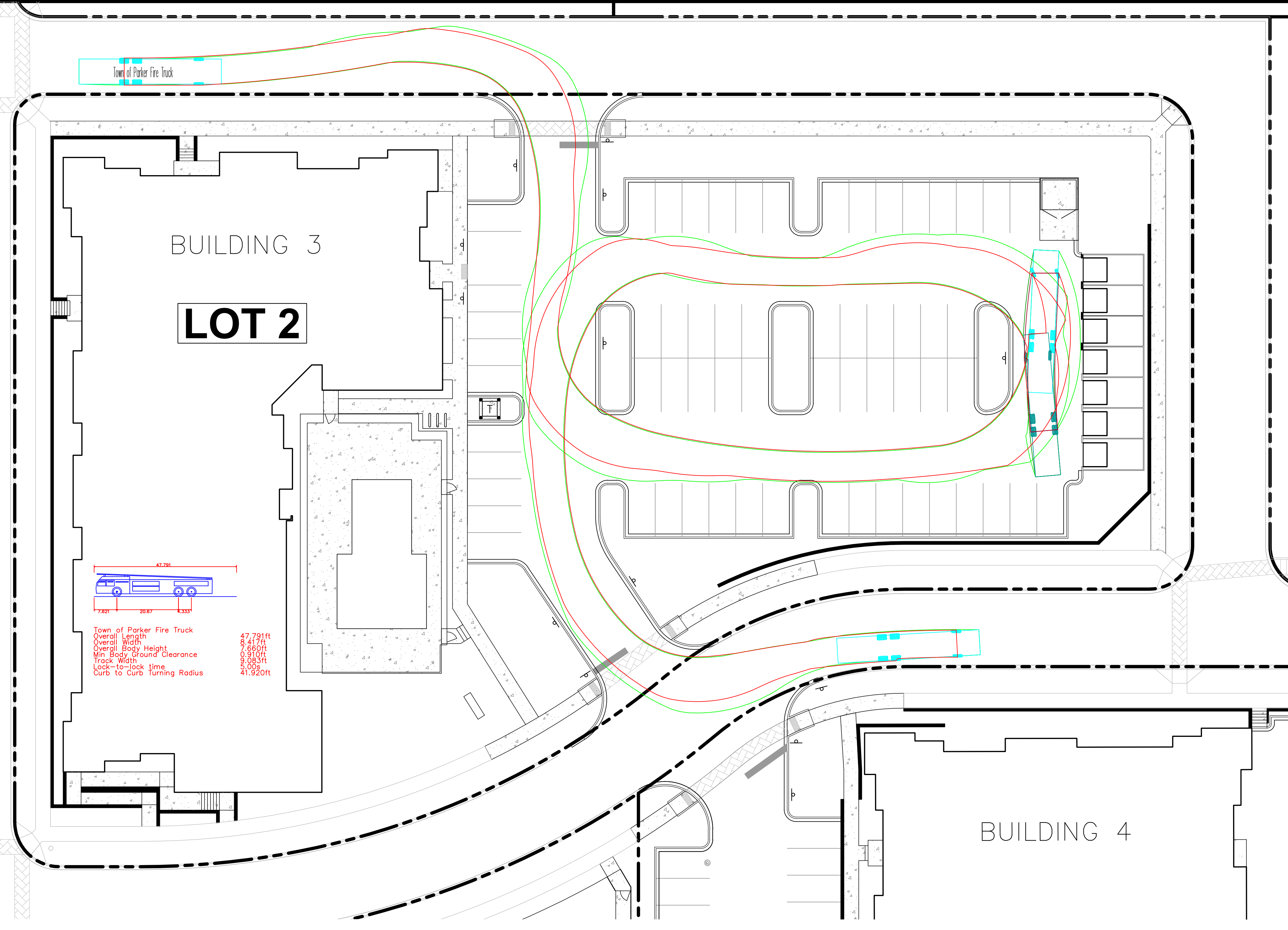
PROJECT NO.
 096481002

DRAWING NAME
 096481002_FT_AT

EX - 1

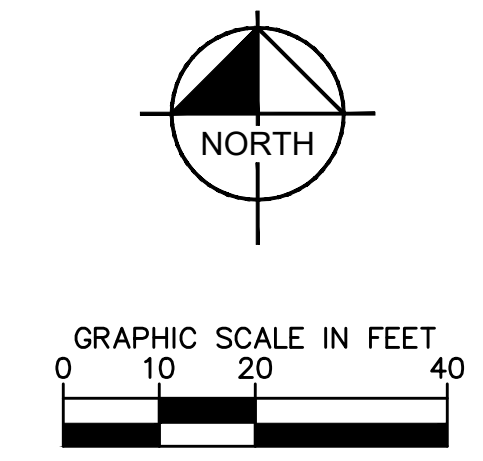


K:\DENV_C\1\096481002 - Parker & Pine MF\CAD\Exhibits\096481002_FT_AT.dwg - K:\DENV_C\1\096481002_FT_AT.dwg - Job: 10/16/2016 10:57 AM
 THIS DOCUMENT CONTAINS UNFINISHED WORK AND IS NOT TO BE USED FOR CONSTRUCTION. IT IS INTENDED ONLY FOR THE USE OF ARCHITECTS AND ENGINEERS. ALL INFORMATION IS SUBJECT TO CHANGE WITHOUT NOTICE. THE INFORMATION CONTAINED HEREIN IS THE PROPERTY OF KIMLEY-HORN AND ASSOCIATES, INC. AND IS NOT TO BE REPRODUCED OR TRANSMITTED IN ANY FORM OR BY ANY MEANS, ELECTRONIC OR MECHANICAL, INCLUDING PHOTOCOPYING, RECORDING, OR BY ANY INFORMATION STORAGE AND RETRIEVAL SYSTEM.



LEGEND

--- PROPERTY LINE
 == PROPOSED CONCRETE CURB
 — EXISTING CURB



NO.	REVISION	BY	DATE	APPR

Kimley»Horn
 2020 KIMLEY-HORN AND ASSOCIATES, INC.
 4582 South Ulster Street, Suite 1500
 Denver, Colorado 80237 (303) 228-2300

DESIGNED BY: DLS
 DRAWN BY: JRK
 CHECKED BY: DLS
 DATE: 12/11/20

PARKER AND PINE FILING NO. 2 LOTS 1-3
 PARKER, CO
 MULTI-FAMILY CONSTRUCTION DOCUMENTS
 LOT 2 FIRE TRUCK AUTOTURN

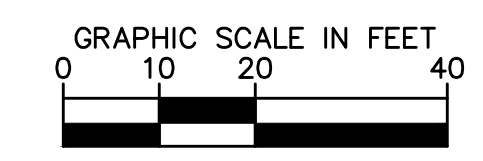
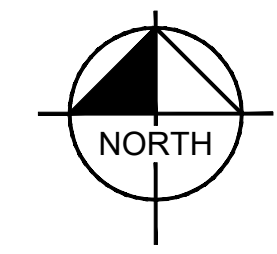
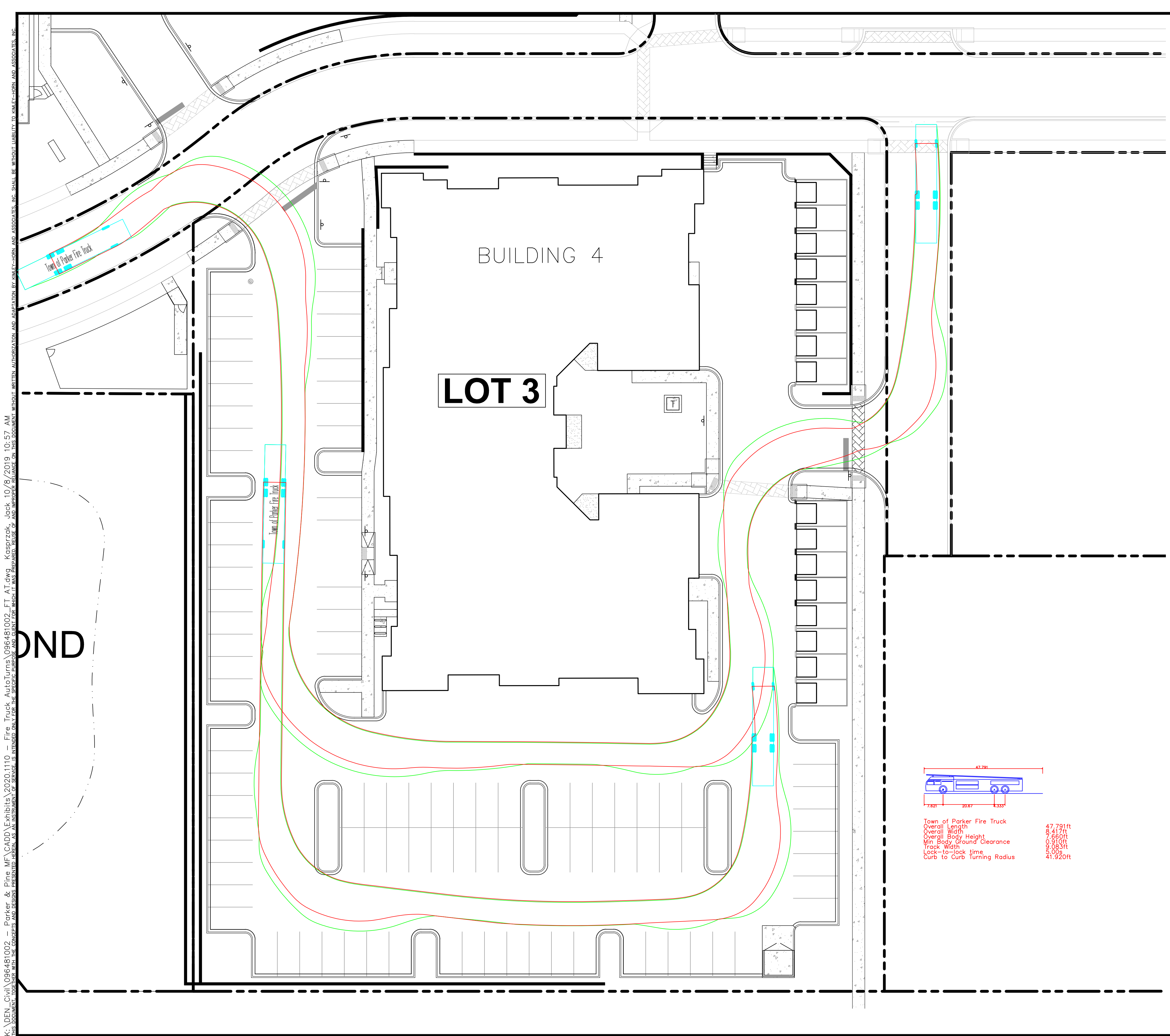
PRELIMINARY
 FOR REVIEW ONLY
 NOT FOR
 CONSTRUCTION
Kimley»Horn
 Kimley-Horn and Associates, Inc.

PROJECT NO.
 096481002

DRAWING NAME
 096481002_FT_AT

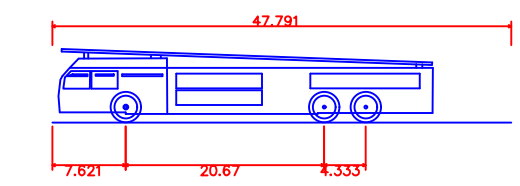
EX - 2





LEGEND

- PROPERTY LINE
- PROPOSED CONCRETE CURB
- EXISTING CURB



Town of Parker Fire Truck	
Overall Length	47.79ft
Overall Width	7.62ft
Overall Body Height	20.67ft
Min Body Ground Clearance	4.33ft
Track Width	9.08ft
Lock-to-lock time	3.00s
Curb to curb Turning Radius	41.520ft

K:\DEN_CAD\096481002_Parker & Pine Multi-Family\096481002_FT_AT.dwg - K:\DEN_CAD\096481002_FT_AT.dwg - AutoTurns - 10/16/2018 10:57 AM
 THIS DOCUMENT IS THE PROPERTY OF KIMLEY-HORN AND ASSOCIATES, INC. IT IS TO BE USED ONLY FOR THE PROJECT AND SITE SPECIFICALLY IDENTIFIED HEREIN. NO PART OF THIS DOCUMENT SHALL BE REPRODUCED OR TRANSMITTED IN ANY FORM OR BY ANY MEANS, ELECTRONIC OR MECHANICAL, WITHOUT WRITTEN AUTHORIZATION AND ADAPTATION BY KIMLEY-HORN AND ASSOCIATES, INC. SHALL BE WITHOUT LIABILITY TO KIMLEY-HORN AND ASSOCIATES, INC.

NO.	REVISION	BY	DATE	APPR

Kimley»Horn
 2020 KIMLEY-HORN AND ASSOCIATES, INC.
 4582 South Ulster Street, Suite 1500
 Denver, Colorado 80237 (303) 228-2300

DESIGNED BY: DLS
 DRAWN BY: JRK
 CHECKED BY: DLS
 DATE: 12/11/20

PARKER AND PINE FILING NO. 2 LOTS 1-3
 PARKER, CO
 MULTI-FAMILY CONSTRUCTION DOCUMENTS
 LOT 3 FIRE TRUCK AUTOTURN

PRELIMINARY
 FOR REVIEW ONLY
 NOT FOR
 CONSTRUCTION
Kimley»Horn
 Kimley-Horn and Associates, Inc.

PROJECT NO.
096481002

DRAWING NAME
096481002_FT_AT

EX - 3

