

DOUGLAS 234 FILING 7

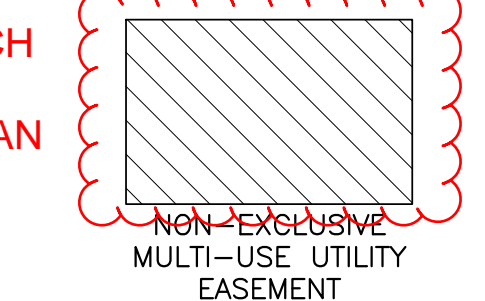
A REPLAT OF DOUGLAS 234 FILING NO. 6,
BEING LOCATED IN SOUTHEAST QUARTER OF SECTION 29,
TOWNSHIP 6 SOUTH, RANGE 66 WEST 6TH P.M.
TOWN OF PARKER, COUNTY OF DOUGLAS, STATE OF COLORADO
SHEET 2 OF 2

UPDATED HEADER FOR REPLAT

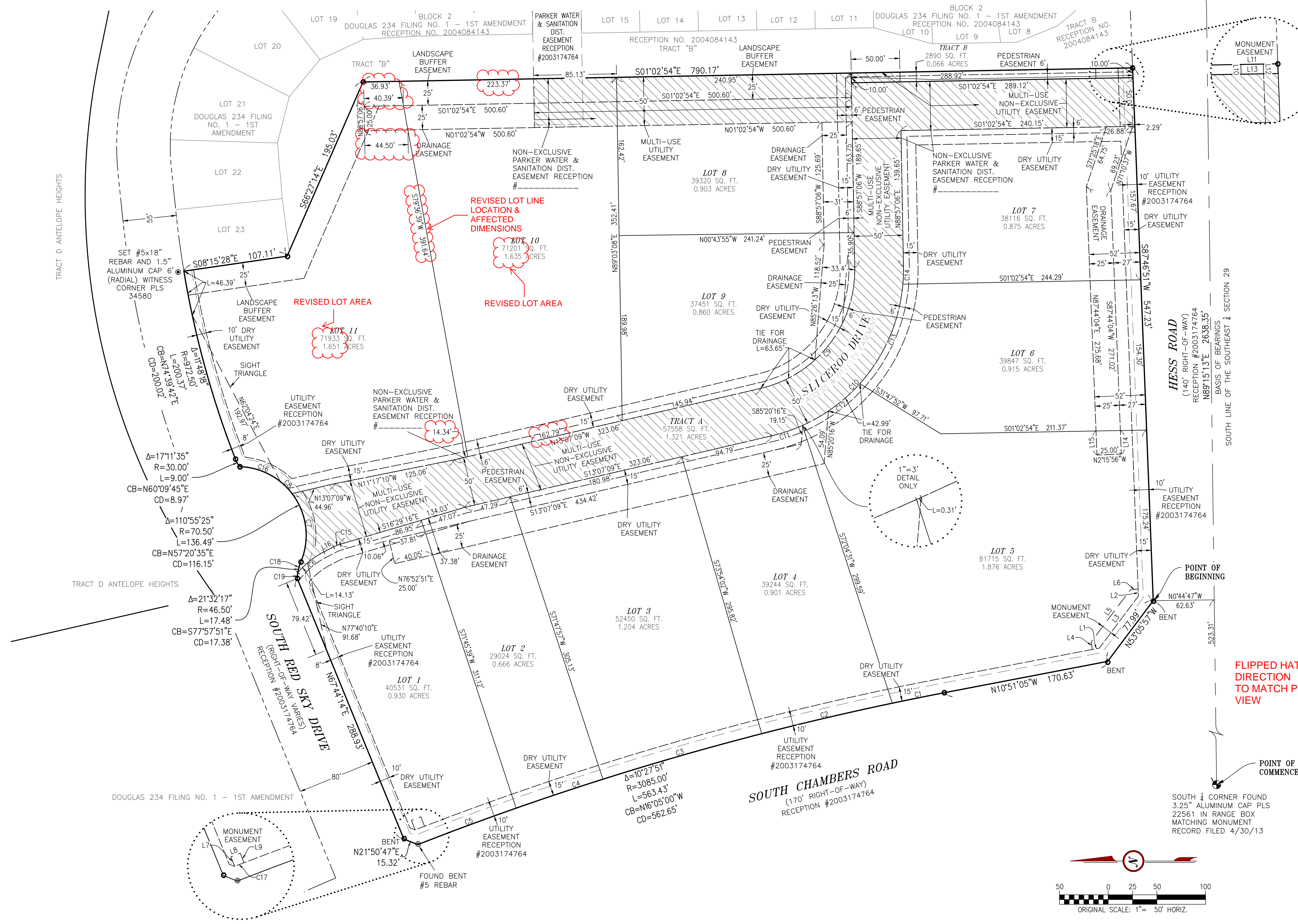
SOUTHEAST CORNER SECTION 29 FOUND 3.25" ALUMINUM CAP PLS 35593 IN RANGE BOX MATCHING MONUMENT RECORD FILED 11/29/05

CURVE TABLE					
CURVE #	LENGTH	RADIUS	DELTA	CHORD BEARING	CHORD LENGTH
C1	54.52'	3085.00'	001°00'45"	N11°21'27"W	54.52'
C2	137.71'	3085.00'	002°33'27"	N13°08'33"W	137.70'
C3	169.57'	3085.00'	003°08'58"	N15°59'46"W	169.55'
C4	93.96'	3085.00'	001°44'42"	N18°26'36"W	93.95'
C5	96.12'	3085.00'	001°47'07"	N20°12'30"W	96.11'
C6	34.38'	88.00'	022°23'01"	N38°24'40"W	34.16'
C7	74.09'	70.50'	060°12'42"	N82°41'57"E	70.73'
C8	17.18'	70.50'	013°57'52"	N45°36'40"E	17.14'
C9	170.02'	125.00'	077°55'45"	S52°05'01"E	157.21'
C10	238.02'	175.00'	077°55'45"	S52°05'01"E	220.09'
C11	33.40'	175.00'	010°56'02"	S18°35'10"E	33.35'
C12	73.41'	175.00'	024°02'00"	S36°04'11"E	72.87'
C13	113.20'	175.00'	037°03'44"	S66°37'03"E	111.24'
C14	18.02'	175.00'	005°53'59"	S88°05'54"E	18.01'
C15	7.12'	38.00'	010°44'07"	N21°51'05"W	7.11'
C16	45.22'	70.50'	036°44'51"	N20°15'18"E	44.45'
C17	10.29'	9823.07'	000°03'36"	N21°11'47"W	10.29'
C18	11.37'	46.50'	014°00'43"	N74°12'04"W	11.34'
C19	6.11'	46.50'	007°31'34"	N84°58'12"W	6.10'

LINE TABLE		
LINE #	LENGTH	BEARING
L1	7.29'	N10°51'05"W
L2	7.26'	N87°46'51"E
L3	66.87'	S53°05'57"E
L4	7.76'	N80°56'50"E
L5	66.87'	S53°05'57"E
L6	8.16'	S06°45'25"E
L7	10.51'	N68°54'46"E
L8	10.33'	S20°51'02"E
L9	10.45'	S69°08'07"W
L10	10.00'	N87°46'51"E
L11	23.00'	S01°02'54"E
L12	10.00'	S87°46'51"W
L13	23.00'	N01°02'54"W
L14	24.16'	N87°44'04"E
L15	24.69'	N87°44'04"E
L16	11.25'	S27°13'09"E



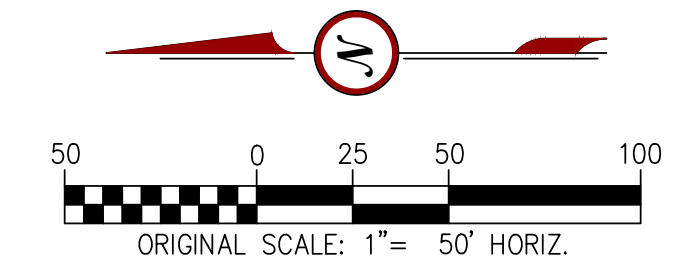
- LEGEND**
- FOUND ALIQUOT CORNER AS DESCRIBED
 - FOUND #5 REBAR & YELLOW PLASTIC CAP PLS 35593
 - BOUNDARY LINE
 - LOT LINE
 - - - RIGHT-OF-WAY
 - - - EASEMENT
 - - - EXISTING EASEMENT



FLIPPED HATCH DIRECTION TO MATCH PLAN VIEW

POINT OF COMMENCEMENT

SOUTH CORNER FOUND 3.25" ALUMINUM CAP PLS 22561 IN RANGE BOX MATCHING MONUMENT RECORD FILED 4/30/13



RICK
ENGINEERING COMPANY

9801 E. EASTER AVE.
CENTENNIAL, CO 80112
PH. (303) 531-8820