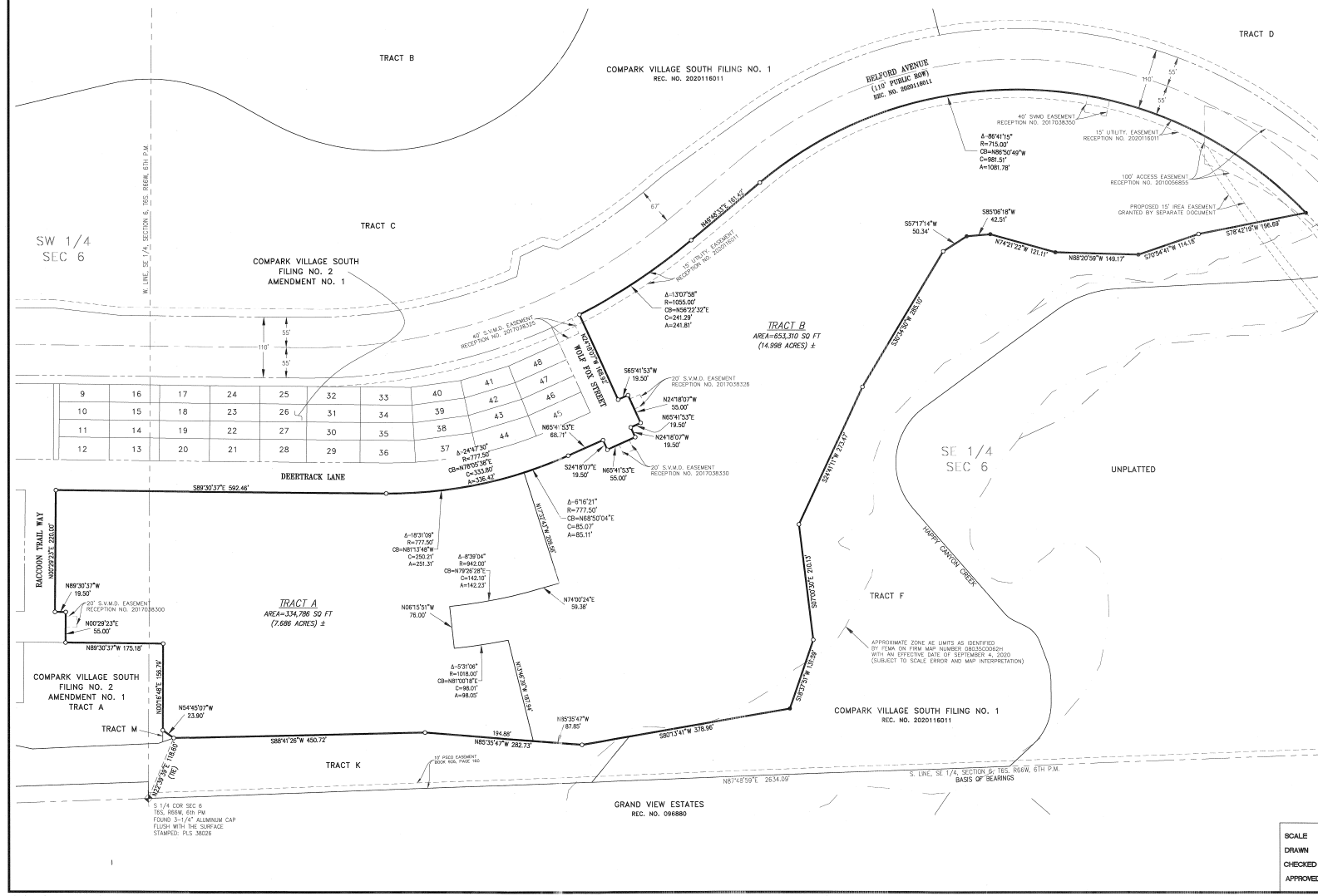
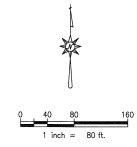




COMPARK VILLAGE SOUTH FILING NO. 1, AMENDMENT 1

REPLAT OF TRACT G
 ALL OF TRACT G, COMPARK VILLAGE SOUTH FILING NO. 1,
 LOCATED IN THE SOUTH HALF OF SECTION 6,
 TOWNSHIP 6 SOUTH, RANGE 65 WEST OF THE SIXTH PRINCIPAL MERIDIAN,
 TOWN OF PARKER, COUNTY OF DOUGLAS, STATE OF COLORADO
 2 TRACTS = 22.684 ACRES



9	16	17	24	25	32	33	40	41	47
10	15	18	23	26	31	34	39	42	46
11	14	19	22	27	30	35	38	43	45
12	13	20	21	28	29	36	37	44	48

MONUMENT LEGEND

- ALIGHT CORNER AS DESCRIBED
- FOUND 1-1/4" YELLOW PLASTIC CAP
FLUSH WITH THE SURFACE
STAMPED: "MANHARD PLS 38445"
- SET #5 REBAR WITH 1-1/4" YELLOW PLASTIC CAP
FLUSH WITH SURFACE
STAMPED: PLS 24673

LEGEND

- SECTION LINE
- BOUNDARY LINE
- LOT LINE
- EASEMENT LINE
- ROW LINE
- S.V.M.D. = STONEGATE VILLAGE METROPOLITAN DISTRICT



APPROXIMATE ZONE AS LIMITS AS DETERMINED BY FEMA ON FIRM MAP NUMBER 08360204H WITH AN EFFECTIVE DATE OF SEPTEMBER 4, 2020 (SUBJECT TO SCALE ERROR AND MAP INTERPRETATION)

SEE DOR SEC 6
 T65, R65W, 6TH PM
 FOUND 3-1/4" ALUMINUM CAP
 FLUSH WITH THE SURFACE
 STAMPED: PLS 12420

SCALE 1"=80'
 DRAWN KGO
 CHECKED JAW
 APPROVED KGO

MERRICK
 5970 Greenwood Plaza Blvd.,
 Greenwood Village, CO 80111
 Phone: 303-791-0741

JOB 65120950 DATE 11/12/21 SH 2 OF 2