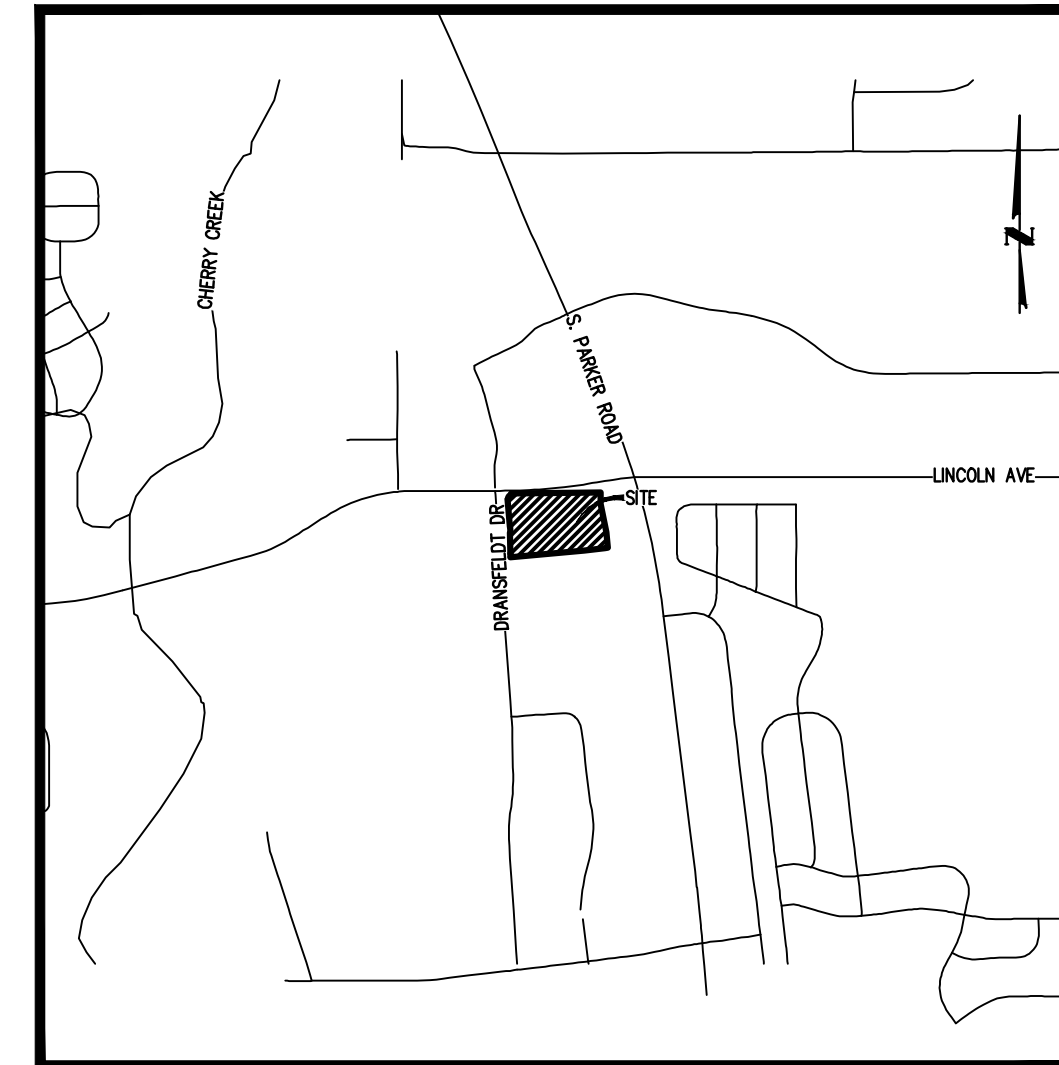


LINCOLN & DRANSFELDT

NORTHWEST 1/4 OF SECTION 15, TOWNSHIP 6 SOUTH, RANGE 66 WEST OF THE 6TH P.M. COUNTY OF DOUGLAS, STATE OF COLORADO

WATER AND SANITARY PLANS



VICINITY MAP
SCALE: 1" = 1500'

ABBREVIATIONS

BK	BOOK
ESMT	EASEMENT
EX	EXISTING
LF	LINEAR FEET
MH	MANHOLE
MIN	MINIMUM
PR	PROPOSED
PVC	POLYVINYL CHLORIDE
RET	RETAINING
ROW	RIGHT-OF-WAY
SAN	SANITARY
SS	SANITARY SEWER
TB	THRUST BLOCK
TYP	TYPICAL
UE	UNDERGROUND ELECTRIC
UT	UNDERGROUND TELECOM
WAT	WATER

SHEET INDEX

- 1 COVER
- 2 NOTES
- 3 OVERALL UTILITY PLAN
- 4 WATER LINE A PLAN & PROFILE
- 5 WATER LINE B PLAN & PROFILE
- 6 WATER LINE A PLAN & PROFILE
- 7 WATER LINE B PLAN & PROFILE
- 8 SANITARY PLAN & PROFILE
- 9 SANITARY PLAN & PROFILE
- 10 WATER DETAILS
- 11 WATER DETAILS
- 12 SEWER DETAILS

MATERIALS LIST

SANITARY ITEM	QUANTITY	UNIT
8" PVC, SDR-35	762	LF
4' DIAMETER MANHOLE	6	EA
WATER ITEM	QUANTITY	UNIT
8" PVC C900 DR 14 W/ TRACER WIRE	1,461	LF
6" DIP FIRE LINE	134	LF
8"X8" TEE W/ THRUST BLOCK & RODDING	5	EA
8" 45° ELBOW W/ THRUST BLOCK & RODDING	19	EA
8" 22.5° ELBOW W/ THRUST BLOCK & RODDING	7	EA
8" 90° ELBOW W/ THRUST BLOCK & RODDING	3	EA
8" GATE VALVE	12	EA
FIRE HYDRANT ASSEMBLY W/ 8"X6" TEE & GATE VALVE	5	EA

LEGEND

	EXISTING	PROPOSED
PROPERTY LINE	---	---
RIGHT-OF-WAY	---	---
SANITARY SEWER PIPE	SS	SS
WATER PIPE	W	W
STORM SEWER PIPE	ST	ST
GAS	G	G
UNDERGROUND TELEPHONE	UT	UT
UNDERGROUND ELECTRIC	UE	UE
OVERHEAD ELECTRIC	OE	OE
JOINT TRENCH	JT	JT
MANHOLE	⊗	⊗
GATE VALVE	⊗	⊗
HYDRANT	⊗	⊗
TEE & FITTINGS	⊗	⊗
WATER DOMESTIC SERVICE	---	---
WATER FIRE SERVICE	---	---
SANITARY SERVICE W/ CLEANOUT	---	---
INLET	⊗	⊗
FLARED END SECTION	---	---
LANDSCAPE DRAIN	---	---
LIGHT	⊗	⊗
TELEPHONE VAULT	⊗	⊗
TELEPHONE JUNCTION BOX	⊗	⊗
ELECTRIC PULL BOX	⊗	⊗
FENCE POST/BOLLARD	⊗	⊗
TRANSFORMER	⊗	⊗

LEGAL DESCRIPTION:

A PARCEL OF LAND SITUATED IN THE NORTHWEST QUARTER OF SECTION 15, TOWNSHIP 6 SOUTH, RANGE 66 WEST OF THE SIXTH PRINCIPAL MERIDIAN, COUNTY OF DOUGLAS, STATE OF COLORADO, MORE PARTICULARLY DESCRIBED AS FOLLOWS:

COMMENCING AT THE NORTHWEST CORNER OF SAID SECTION 15;
THENCE SOUTH 83°44'03" EAST, A DISTANCE OF 846.76 FEET TO A POINT ON THE SOUTH RIGHT-OF-WAY LINE OF LINCOLN AVENUE AND THE POINT OF BEGINNING;

THENCE NORTH 89°29'00" EAST ALONG SAID SOUTH RIGHT-OF-WAY LINE, A DISTANCE OF 697.77 FEET TO THE NORTHWEST CORNER OF LOT 1, PEASLEE SUBDIVISION FILING NO. 1, RECORDED AT RECEPTION NO. 99104313;
THENCE ALONG THE WEST LINE OF SAID LOT 1 THE FOLLOWING TWO (2) COURSES:
1) SOUTH 00°31'00" EAST, A DISTANCE OF 89.84 FEET;
2) SOUTH 11°49'46" EAST, A DISTANCE OF 225.08 FEET TO THE NORTHWEST CORNER OF LOT 1, PEASLEE SUBDIVISION FILING NO. 2, RECORDED AT RECEPTION NO. 2005085666;

THENCE SOUTH 05°51'51" EAST ALONG THE WEST LINE OF SAID LOT 1, A DISTANCE OF 120.83 FEET TO A POINT ON THE NORTH LINE OF LOT 1B, PARKER PROFESSIONAL PARK FIRST AMENDMENT, RECORDED AT RECEPTION NO. 8725509;
THENCE SOUTH 84°07'50" WEST ALONG SAID NORTH LINE, A DISTANCE OF 24.51 FEET TO THE NORTHEAST CORNER OF LOT 1, BLOCK 1 E.T. TECHNOLOGIES INC., RECORDED AT RECEPTION NO. 2002093991;

THENCE ALONG SAID NORTH LINE THE FOLLOWING TWO (2) COURSES:
1) SOUTH 82°44'13" WEST, A DISTANCE OF 163.50 FEET;
2) SOUTH 84°51'34" WEST, A DISTANCE OF 577.15 FEET TO A POINT ON THE EAST RIGHT-OF-WAY LINE OF DRANSFELDT ROAD DEEDED BY RECEPTION NO. 2002088425 AND A POINT OF NON-TANGENT CURVATURE;

THENCE ALONG SAID EAST RIGHT-OF-WAY LINE THE FOLLOWING SIX (6) COURSE:
1) ALONG THE ARC OF SAID CURVE TO THE RIGHT AN ARC LENGTH OF 25.79 FEET, SAID CURVE HAVING A RADIUS OF 660.00 FEET, A CENTRAL ANGLE OF 02°14'19", AND A CHORD WHICH BEARS NORTH 02°20'42" WEST A CHORD DISTANCE OF 25.79 FEET;
2) NORTH 01°13'32" WEST, A DISTANCE OF 165.71 FEET TO A POINT OF CURVATURE;
3) ALONG THE ARC OF SAID CURVE TO THE LEFT AN ARC LENGTH OF 43.04 FEET, SAID CURVE HAVING A RADIUS OF 740.00 FEET, A CENTRAL ANGLE OF 03°19'57", AND A CHORD WHICH BEARS NORTH 02°53'30" WEST A CHORD DISTANCE OF 43.03 FEET;
4) NORTH 04°33'29" WEST, A DISTANCE OF 217.83 FEET TO A POINT OF CURVATURE;
5) ALONG THE ARC OF SAID CURVE TO THE RIGHT AN ARC LENGTH OF 49.23 FEET, SAID CURVE HAVING A RADIUS OF 30.00 FEET, A CENTRAL ANGLE OF 94°01'51", AND A CHORD WHICH BEARS NORTH 42°27'27" EAST A CHORD DISTANCE OF 43.89 FEET;
6) NORTH 04°33'21" WEST, A DISTANCE OF 15.04 FEET TO THE POINT OF BEGINNING.

SAID PARCEL CONTAINS 346,479 SQUARE FEET OR 7.95 ACRES, MORE OR LESS.

BASIS OF BEARINGS

BEARINGS ARE BASED ON THE NORTH LINE OF THE NORTHWEST QUARTER OF SECTION 15, TOWNSHIP 6 SOUTH, RANGE 66 WEST OF THE 6TH PRINCIPAL MERIDIAN. AS MONUMENTED AT BOTH THE NORTHWEST QUARTER CORNER AND NORTH QUARTER CORNER BY 3.25" ALUMINUM CAPS, ASSUMED TO BEAR SOUTH 89°29'00" WEST.

AGENCY CONTACT LIST

OWNER/DEVELOPER

PLAZA STREET PARTNERS, LLC (314) 882-7758
2400 W 75TH ST, SUITE 220
PRAIRIE VILLAGE, KS 66208
CONTACT: RYANNE SASS

CIVIL ENGINEER/SURVEYOR

HARRIS KOCHER SMITH (303) 623-6300
1120 LINCOLN ST, SUITE 1000
DENVER, CO 80203
CONTACT: RACHEL PATTON, PE

LANDSCAPE ARCHITECT

NORRIS DESIGN (303) 892-1166
1101 BANNOCK ST
DENVER, CO 80204
CONTACT: JARED CARLON

TOWN OF PARKER

COMMUNITY DEVELOPMENT DEPARTMENT (303) 840-9546
20120 EAST MAIN STREET
PARKER, COLORADO 80134
CONTACT: PAUL WORKMAN

PUBLIC UTILITIES

XCEL ENERGY (303) 571-3358
1123 WEST 3RD AVENUE
DENVER, COLORADO 80223

INTERMOUNTAIN RURAL ELECTRIC ASSOCIATION (303) 688-3100
5496 U.S. HIGHWAY 85
SEDALJA, COLORADO 80135
CONTACT: JIM POTTER

CENTURY LINK (303) 840-1103
11290 SOUTH TWENTY MILE ROAD #130
PARKER, COLORADO 80134

PARKER WATER AND SANITATION DISTRICT (303) 841-4627
18100 EAST WOODMAN ROAD
PARKER, COLORADO 80134

SOUTH METRO FIRE DISTRICT AUTHORITY (720) 989-2230
9195 MINERAL AVENUE
CENTENNIAL, COLORADO 80112
CONTACT: RANDY CAPRA

COMCAST (303) 578-5142
6850 SOUTH TUCSON WAY
ENGLEWOOD, COLORADO 80112

DEVELOPER:

PLAZA STREET PARTNERS
2400 W 75TH ST, SUITE 220
PRAIRIE VILLAGE, KS 66208

ENGINEER:

HKS HARRIS KOCHER SMITH
1120 Lincoln Street, Suite 1000
Denver, Colorado 80203
P: 303.623.6300 F: 303.623.6311
HarrisKocherSmith.com

ISSUE DATE: 08-16-2021	PROJECT #: 200829
DATE	REVISION COMMENTS
11-17-2021	PER PWSO COMMENTS
04-12-2022	PER PWSO COMMENTS
07-21-2022	PER PWSO COMMENTS

I HEREBY AFFIRM THAT THESE FINAL CONSTRUCTION PLANS WERE PREPARED UNDER MY DIRECT SUPERVISION, IN ACCORDANCE WITH ALL APPLICABLE TOWN OF PARKER AND STATE OF COLORADO STANDARDS AND STATUTES, RESPECTIVELY; AND THAT I AM FULLY RESPONSIBLE FOR ALL DESIGN AND REVISIONS RELATIVE TO SAID PLANS.

PRELIMINARY
NOT FOR
CONSTRUCTION

RACHEL C. PATTON, P.E. 54450
ON THE BEHALF OF HARRIS KOCHER SMITH

DISTRICT ENGINEER SIGNATURE BLOCK

THE DISTRICT INSPECTOR MUST BE NOTIFIED AT LEAST 48 HOURS PRIOR TO START OF CONSTRUCTION. CALL PARKER WATER AND SANITATION DISTRICT AT 303-841-4627. THE DISTRICT WILL PROVIDE PERIODIC INSPECTIONS OF THE WORK. 24 HOUR NOTICE TO THE INSPECTOR IS REQUIRED FOR SCHEDULING INSPECTIONS. ANY WORK ACCOMPLISHED WITHOUT THE APPROVAL OF THE INSPECTOR WILL BE SUBJECT TO REJECTION.

REVIEWED FOR CONFORMANCE TO PARKER WATER AND SANITATION DISTRICT STANDARDS.

BY: _____
(DISTRICT REPRESENTATIVE)

DATE: _____

APPROVED FOR CONSTRUCTION:
PARKER WATER AND SANITATION DISTRICT

BY: _____
(DISTRICT ENGINEER)

DATE: _____

ALL FIRE HYDRANTS SHALL BE INSTALLED ACCORDING TO WATER UTILITY STANDARDS. THE NUMBER AND LOCATIONS OF THE FIRE HYDRANTS AS SHOWN ON THE OVERALL UTILITY PLAN ARE CORRECT AS SPECIFIED BY THE TOWN OF PARKER, COMMUNITY DEVELOPMENT DEPARTMENT.

FIRE CODE OFFICIAL OR DESIGNATED REPRESENTATIVE _____ DATE _____

(NOTE - UNDERGROUND FIRE LINE (UFL) SUBMITTAL DOCUMENTS MUST MEET THE REQUIREMENT OF NFPA 24 WHEN SUBMITTING FOR REVIEW.)

NO CHANGES ARE TO BE MADE TO THIS DRAWING WITHOUT WRITTEN PERMISSION OF HARRIS KOCHER SMITH.
Filepath: K:\2008\ENGINEERING\UTILITIES\WAS - COVER DWG - Layout LAYOUT1
Plotted: THU 07/21/2022 11:17:05AM By: OliviaMcGowan



NO CHANGES ARE TO BE MADE TO THIS DRAWING WITHOUT WRITTEN PERMISSION OF HARRIS KOCHER SMITH.

GENERAL NOTES:

1. ALL MATERIALS AND WORKMANSHIP SHALL BE IN CONFORMANCE WITH THE PWSD ENGINEERING STANDARDS AND SPECIFICATIONS, LATEST VERSION.
2. THE CONTRACTOR SHALL CONTACT ALL APPROPRIATE UTILITY COMPANIES AND THE TOWN OF PARKER, DOUGLAS COUNTY AND OTHER NEIGHBORING CITIES AND TOWNS PRIOR TO THE BEGINNING OF ANY CONSTRUCTION. CONTRACTOR SHALL BE RESPONSIBLE FOR LOCATING ANY EXISTING UTILITY (INCLUDING DEPTHS) WHICH MAY CONFLICT WITH THE PROPOSED CONSTRUCTION. ALL EXISTING UTILITIES SHALL BE PROTECTED FROM DAMAGE BY THE CONTRACTOR. DAMAGED UTILITIES SHALL BE REPAIRED BY THE CONTRACTOR AT HIS OWN EXPENSE.
3. ALL ITEMS SHOWN ON THE PLANS AS EXISTING ARE SHOWN IN APPROXIMATE LOCATIONS ONLY. THE ACTUAL LOCATIONS MAY VARY FROM THE PLANS, ESPECIALLY IN THE CASE OF UNDERGROUND UTILITIES. WHENEVER THE CONTRACTOR DISCOVERS A DISCREPANCY IN LOCATIONS CONTACT THE PWSD IMMEDIATELY.
4. PWSD ENGINEER AND OTHER APPROVING AGENCIES ARE TO BE NOTIFIED 48 HOURS PRIOR TO CONSTRUCTION.
5. THE CONTRACTOR SHALL OBTAIN, AT HIS EXPENSE, ALL PERMITS NECESSARY TO PERFORM THE PROPOSED WORK.
6. ALL CONCRETE SHALL BE A MINIMUM OF CLASS A, 6 SACK, TYPE II, 3000-POUND COMPRESSION STRENGTH.
7. THE DESIGN ENGINEER SHALL SUBMIT ONE (1) SET OF "AS-BUILT" DRAWINGS AND ELECTRONIC FILES TO THE DISTRICT ENGINEER FOR APPROVAL BY DISTRICT. AFTER APPROVAL HAS BEEN GRANTED BY THE DISTRICT ENGINEER, FULL SIZE PRINTS SHALL BE TRANSMITTED TO THE PWSD OFFICE.
8. NO WORK SHALL BE BACKFILLED UNTIL THE CONSTRUCTION HAS BEEN INSPECTED AND APPROVED FOR BACKFILLING BY THE DISTRICT ENGINEER OR REPRESENTATIVE OF THE DISTRICT ENGINEER. ALL BACKFILL MATERIAL SHALL BE COMPACTED TO 95% STANDARD PROCTOR DENSITY. COMPACTION TESTS MUST BE SUBMITTED TO DISTRICT ENGINEER PRIOR TO PROBATIONARY ACCEPTANCE.
9. TRENCHES SHALL BE EXCAVATED AND THE PIPE EXPOSED FOR THE INSPECTION AT ANY LOCATION ON THE PROJECT IF SO ORDERED BY THE INSPECTOR.
10. THE CONTRACTOR WILL BE HELD RESPONSIBLE FOR THE PROPER FUNCTIONING OF LINES (WATER AND SEWER) FOR UP TO TWO (2) YEARS FROM THE DATE OF PROBATIONARY ACCEPTANCE OF THE LINES BY THE DISTRICT. ANY MALFUNCTION DURING THIS PERIOD OF GUARANTEE SHALL BE REMEDIED BY THE CONTRACTOR TO THE SATISFACTION OF THE DISTRICT ENGINEER AT NO EXPENSE TO THE DISTRICT.
11. SURFACE GRADES ARE TO BE WITHIN PLUS OR MINUS ONE FOOT OF FINISHED GRADE AND VERIFICATION OF COMPACTION RESULTS OBTAINED PRIOR TO THE INSTALLATION OF WATER AND SEWER LINES. RESULTS MUST BE SUBMITTED TO THE DISTRICT ENGINEER.
12. ALL SERVICES WILL BE PERMANENTLY MARKED ON CURB FACE AS FOLLOWS:
 'X' FOR SANITARY SERVICE SEWERS
 'Y' FOR WATER SERVICES
13. NO TREES ALLOWED IN EASEMENTS OR WITHIN 8' OF WATER OR SANITARY SEWER MAINS IN RIGHT OF WAY.
14. THE CONTRACTOR SHALL HAVE IN HIS POSSESSION AT ALL TIMES ONE (1) SIGNED COPY OF THE PLANS WHICH HAVE BEEN APPROVED BY THE PWSD AND THE DISTRICT ENGINEER AND ONE (1) COPY OF THE LATEST PWSD SPECIFICATION MANUAL.

WATER SYSTEM NOTES:

1. ALL MATERIALS AND WORKMANSHIP SHALL BE IN CONFORMANCE WITH THE PWSD ENGINEERING STANDARDS AND SPECIFICATIONS, LATEST REVISION.
2. ALL WATER MAINS SHALL BE PER PWSD MATERIALS SPECIFICATIONS. ALL MATERIALS IN CONTACT WITH POTABLE WATER SHALL BE SUITABLE FOR CHLORINATED AND CHLORAMINATED WATER.
3. ALL BENDS, PLUGS, REDUCERS, AND FIRE HYDRANTS TO BE RODDED OR MEGA-LUGGED. ALL FITTINGS SHALL BE WRAPPED PER PWSD MATERIALS SPECIFICATIONS.
4. THERE SHALL BE A MINIMUM COVER OF 4.5 FEET OVER ALL WATER MAINS.
5. FIRE HYDRANTS SHALL CONFORM TO AWWA C-502 "DRY BARREL FIRE HYDRANTS" PIPE HYDRANT ASSEMBLIES PER PWSD SPECIFICATIONS.
6. ALL BENDS, TEES, FIRE HYDRANTS, BLOW-OFFS, AND PLUGS AT DEAD-END MAINS SHALL BE PROTECTED FROM THRUST WITH CONCRETE THRUST BLOCKS.
7. PRECAUTIONS SHALL BE TAKEN TO PROTECT THE INTERIOR OF PIPES, FITTINGS, AND VALVES AGAINST CONTAMINATION. ALL OPENINGS IN THE PIPELINE SHALL BE CLOSED WITH WATERTIGHT PLUGS WHEN PIPE LAYING IS STOPPED AT THE CLOSE OF THE DAY'S WORK OR FOR OTHER REASONS, SUCH AS REST BREAKS OR MEAL PERIODS.
8. VALVES IN STREETS ARE TO BE LOCATED AT PROPERTY LINE EXTENSIONS EXCEPT FOR TAPPING TEES; WHERE AN ADDITIONAL VALVE SHALL BE PLACED ON THE TAPPING TEE. OTHER LOCATIONS SHOWN ON THE PLANS.
9. WHEN NECESSARY TO LOWER OR RAISE WATER LINES AT STORM DRAINS AND OTHER UTILITY CROSSINGS, A MINIMUM CLEARANCE OF 1.5 FEET SHALL BE MAINTAINED BETWEEN OUTSIDE OF PIPES.
10. THE CONTRACTOR SHALL NOTIFY THE PWSD AT LEAST 48 HOURS PRIOR TO ANY CONSTRUCTION. IF WORK IS SUSPENDED FOR ANY PERIOD OF TIME AFTER INITIAL START-UP, THE CONTRACTOR MUST NOTIFY THE DISTRICT ENGINEER 48 HOURS PRIOR TO RE-START.
11. PIPE BEDDING SHALL BE A CLEAN, WELL-GRADED SAND OR SQUEEGEE SAND IN ACCORDANCE WITH PWSD STANDARDS AND SPECIFICATIONS, LATEST REVISION.
12. THE CONTRACTOR SHALL NOTIFY THE PUBLIC UTILITY COMPANIES AND DETERMINE THE LOCATION OF ALL EXISTING UNDERGROUND UTILITIES PRIOR TO PROCEEDING WITH THE EXCAVATION. ALL WORK PERFORMED IN THE AREA OF THE PUBLIC UTILITIES SHALL BE PERFORMED ACCORDING TO THE REQUIREMENTS OF THESE AGENCIES.
13. COMPACTION OF ALL TRENCHES MUST BE ATTAINED IN ACCORDANCE WITH THE SOILS REPORTS AND COMPACTION TEST RESULTS SUBMITTED TO THE DISTRICT ENGINEER PRIOR TO PROBATIONARY ACCEPTANCE.
14. AT LEAST FIVE (5) DAYS PRIOR TO THE START OF CONSTRUCTION, A PRE-CONSTRUCTION MEETING WILL BE HELD AT THE OFFICE OF THE DISTRICT ENGINEER AND ATTENDED BY THE CONTRACTOR, DESIGN ENGINEER, AND REPRESENTATIVE OF OTHER APPROVING AGENCIES.
15. CHLORINATION AND FLUSHING: ALL WATER MAINS SHALL BE INSTALLED AND CHLORINATED PER PWSD SPECIFICATIONS. CHLORINATION OF FINISHED PIPELINE COMPLETED BEFORE HYDROSTATIC TESTING.
16. HYDROSTATIC TESTING: ALL WATER MAINS SHALL BE TESTED PER THE REQUIREMENTS OF THE PWSD SPECIFICATIONS UP TO MINIMUM OF 150 PSI IN THE PRESENCE OF A PWSD INSPECTOR/ENGINEER.

SANITARY SEWER SYSTEM NOTES:

1. ALL MATERIALS AND WORKMANSHIP SHALL BE IN CONFORMANCE WITH THE PWSD ENGINEERING STANDARDS AND SPECIFICATIONS, LATEST VERSION.
2. ALL SEWER MAINS SHALL BE PVC, ASTM D-3034, SDR 35 OR APPROVED EQUAL. ALL SEWER MAIN SIZE IS 8" IN DIAMETER UNLESS OTHERWISE NOTED.
3. SEWER LINES SHALL BE INSTALLED 5.0 FEET SOUTH OR WEST OF STREET CENTERLINE, UNLESS OTHERWISE SHOWN ON PLANS. SEWER LINES SHALL BE 10.00 FEET FROM WATER LINES EXCEPT WHEN CROSSING EACH OTHER. SEWER LINES WHICH CROSS LESS THAN 1.50 FEET VERTICALLY FROM THE WATER MAIN SHALL BE ENCASED IN CONCRETE AS PER PWSD SPECIFICATIONS. USE RUBBER GASKETS FOR PVC ENCASEMENT.
4. SEWER RIM ELEVATIONS SHOWN ARE APPROPRIATE ONLY AND ARE NOT TO BE TAKEN AS FINAL ELEVATIONS. RING AND COVER SHALL BE SET IN CENTERED CONCRETE RINGS WITH RAM-NECK FOR ADJUSTMENT TO MATCH FINAL PAVEMENT ELEVATIONS.
5. THE CONTRACTOR AND SURVEY CREW SHALL VERIFY ELEVATIONS OF EXISTING SEWER LINES AND MANHOLES TO BE TIED TO PRIOR TO CONSTRUCTION OR STAKING OF SANITARY SEWER.
6. NO UNDERDRAIN SYSTEM WILL BE ALLOWED TO BE PLACED IN MAINLINE OR SEWER SERVICE TRENCHES.
7. SEWER SERVICE TEES FOR EACH UNIT SHALL BE STAKED BY A SURVEY CREW AND FURNISHED AND INSTALLED BY THE CONTRACTOR. THE CONTRACTOR SHALL FURNISH TO THE ENGINEER "AS CONSTRUCTED" LOCATION OF TEES. SEWER WYES SHALL BE USED RATHER THAN TEES.
8. ALL MANHOLES SHALL BE 48-INCHES IN DIAMETER WITH 24-INCH RING AND COVER, ECCENTRIC CONE UNLESS OTHERWISE SPECIFIED. ALL MANHOLES SHALL HAVE SHAPED INVERTS.
9. PIPE BEDDING SHALL BE CLASS "B" AND SHALL CONFORM TO ASTM C-33 OR D-448 GRADATION NO. 6 OR NO. 67.
10. AT LEAST FIVE (5) DAYS PRIOR TO THE START OF CONSTRUCTION, A PRE-CONSTRUCTION MEETING WILL BE HELD AT THE OFFICE OF THE DISTRICT ENGINEER AND ATTENDED BY THE CONTRACTOR AND REPRESENTATIVES OF THE OTHER APPROVING AGENCIES. IT WILL BE THE RESPONSIBILITY OF THE CONTRACTOR TO CONTACT THE DISTRICT ENGINEER TO SCHEDULE THIS MEETING.
11. THE CONTRACTOR SHALL HAVE IN HIS POSSESSION AT ALL TIMES ONE (1) SIGNED COPY OF THE PLANS WHICH HAVE BEEN APPROVED BY THE PWSD AND THE DISTRICT ENGINEER AND ONE (1) COPY OF THE LATEST PWSD SPECIFICATION MANUAL.
12. ALL SEWER LINES SHALL BE TESTED IN ACCORDANCE WITH THE PWSD STANDARDS AND SPECIFICATIONS PRIOR TO ACCEPTANCE OR ANY CONNECTION TO AN EXISTING SEWER LINE.
13. PRIOR TO STARTING WORK WHERE SEWER MAIN IS TO BE CONNECTED TO EXISTING PWSD SEWER SYSTEMS, THE NEAREST MANHOLE TO THE POINT OF TIE-IN SHALL BE PLUGGED WITH A PLUMBER'S PLUG ON THE INLET SIDE BY THE CONTRACTOR. THIS PLUG SHALL REMAIN IN PLACE UNTIL FINAL PROBATIONARY ACCEPTANCE BY PWSD. THE CONTRACTOR SHALL BE RESPONSIBLE FOR PUMPING AND CLEANING THESE MANHOLES AND REMOVING THE PLUG WHEN INSTRUCTED BY THE DISTRICT. PRIOR TO PROBATIONARY ACCEPTANCE WALK-THROUGH, THE CONTRACTOR SHALL JET CLEAN THE ENTIRE SANITARY SEWER SYSTEM AND PUMP OUT AT THE PLUGGED MANHOLE.

FILEPATH: K:\200829\ENGINEERING\UTILITIES\NWS - COVER DWG LAYOUT.LAYOUT2
 5/16/2022 11:17:51 AM
 PLOTTED: THU 07/21/22 11:17:51 AM BY: OLIVIA MCCrackEN



Know what's below.
 Call before you dig.

DESIGNED BY: <DESIGNER>
 CHECKED BY: <REVIEWER>
 DRAWN BY: <DRAWN>

ISSUE DATE: 08-16-2021

DATE	REVISION COMMENTS
11-17-2021	PER PWSD COMMENTS
04-12-2022	PER PWSD COMMENTS
07-21-2022	PER PWSD COMMENTS



PLAZA STREET PARTNERS

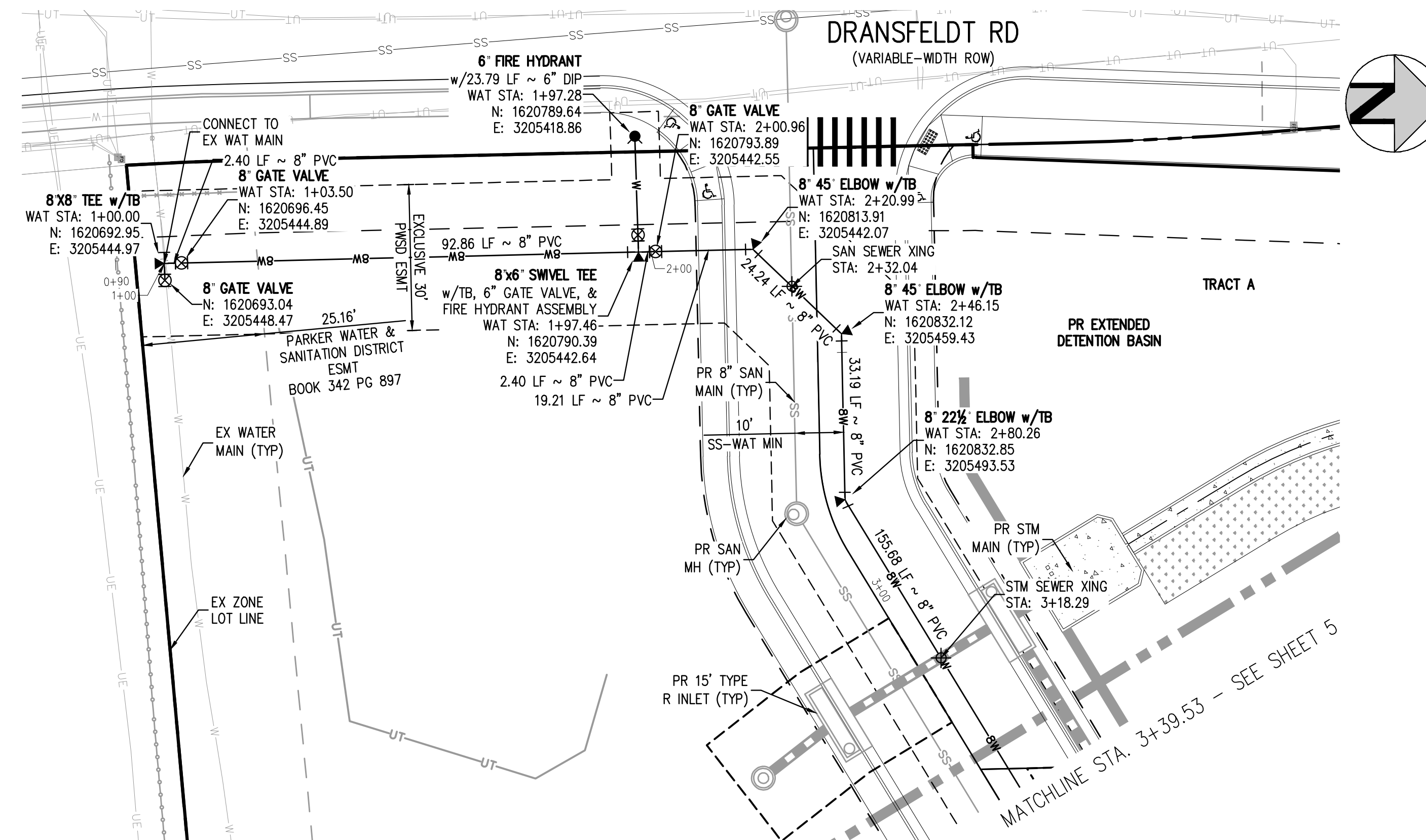
LINCOLN & DRANSFELDT
 NOTES

PROJECT #: 200829
 SHEET NUMBER

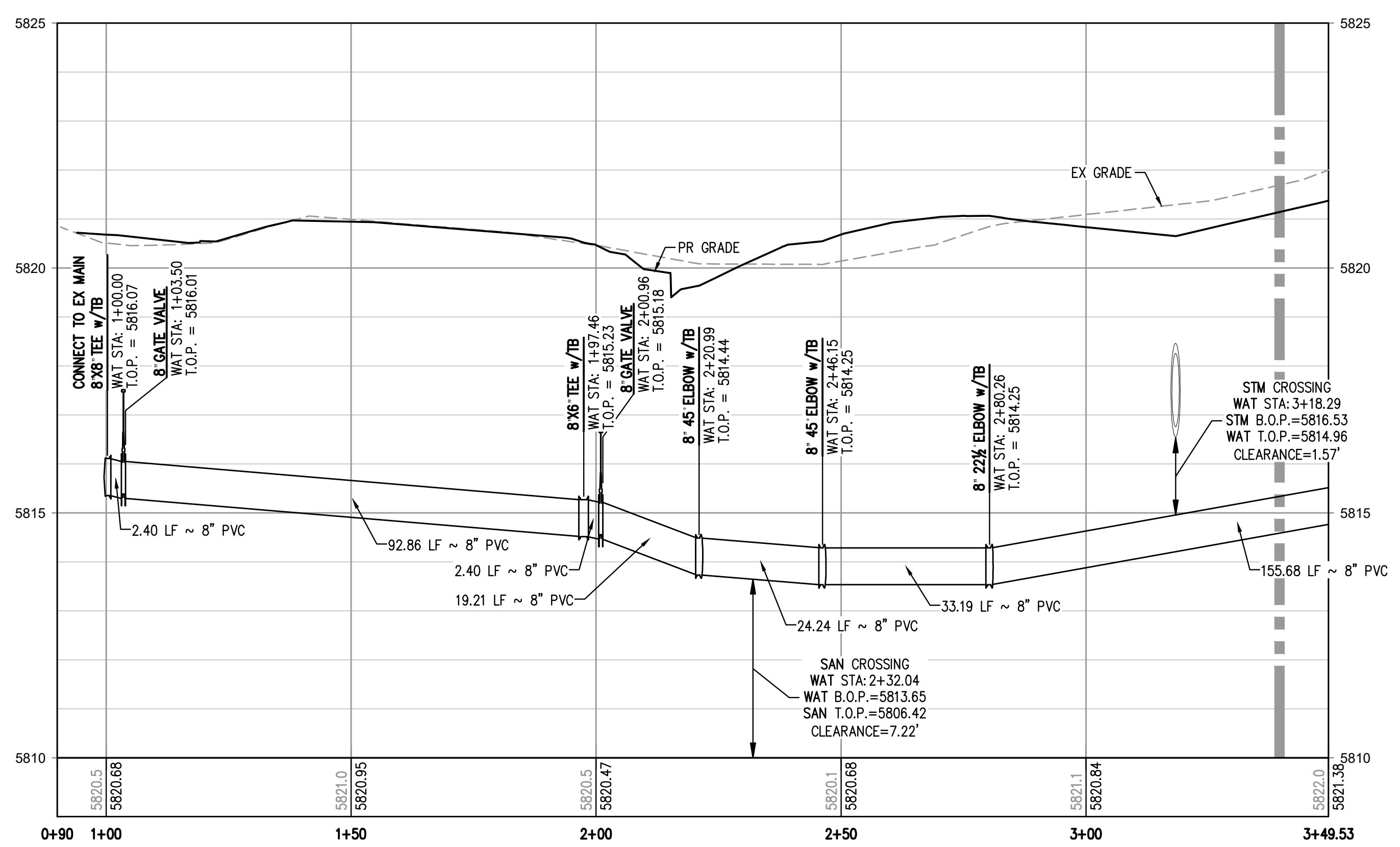
2

NO CHANGES ARE TO BE MADE TO THIS DRAWING WITHOUT WRITTEN PERMISSION OF HARRIS KOCHER SMITH.

FILE PATH: K:\200829\ENGINEERING\UTILITIES\WATER\W&S - WATER PLAN & PROFILE.DWG LAYOUT: LAYOUT1
NO SCALE: 11:18:16A BY: OLIVIA MCCracken
PLOTTED: THU 07/21/2022 11:18:16A BY: OLIVIA MCCracken

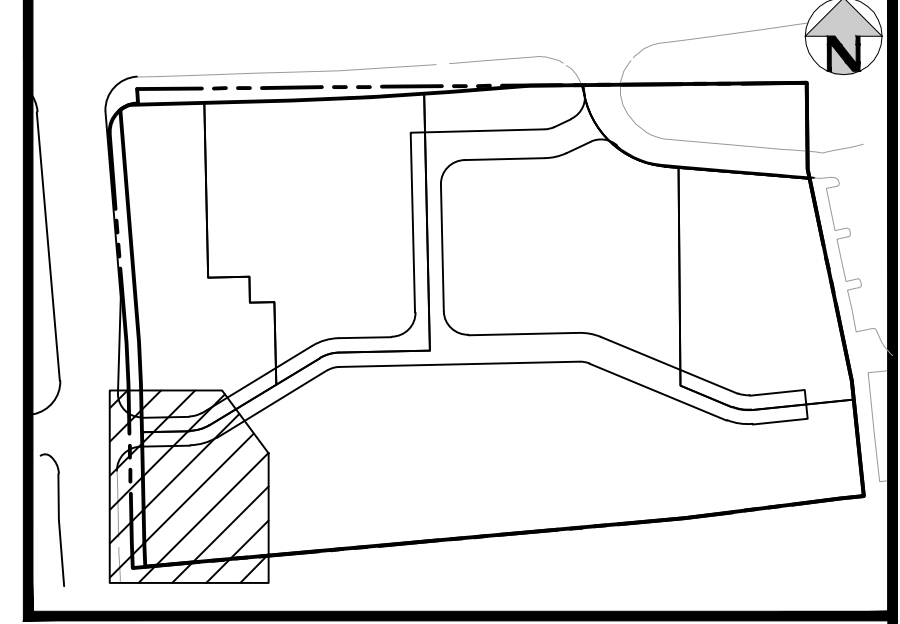


WATER LINE A PLAN
SCALE: 1" = 20'



WATER LINE A PROFILE
HORIZONTAL SCALE: 1" = 20'
VERTICAL SCALE: 1" = 2'

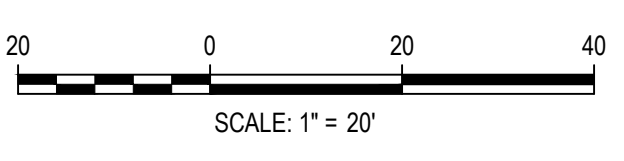
MATCHLINE STA. 3+39.53 - SEE SHEET 5



- NOTES:**
1. DEPTH UNKNOWN. CONTRACTOR SHALL VERIFY DEPTH PRIOR TO CONSTRUCTION AND NOTIFY ENGINEER OF ANY CONFLICTS.
 2. A MINIMUM OF 18" VERTICAL CLEARANCE MUST BE PROVIDED BETWEEN ALL UTILITIES AT CROSSINGS.



Know what's below.
Call before you dig.



DESIGNED BY: MJS
CHECKED BY: RCP
DRAWN BY: MJS

ISSUE DATE: 08-16-2021	
DATE	REVISION COMMENTS
11-17-2021	PER PWSD COMMENTS
04-12-2022	PER PWSD COMMENTS
07-21-2022	PER PWSD COMMENTS

HKS HARRIS KOCHER SMITH
1120 Lincoln Street, Suite 1000
Denver, Colorado 80203
P: 303.623.6300 F: 303.623.6311
HarrisKocherSmith.com

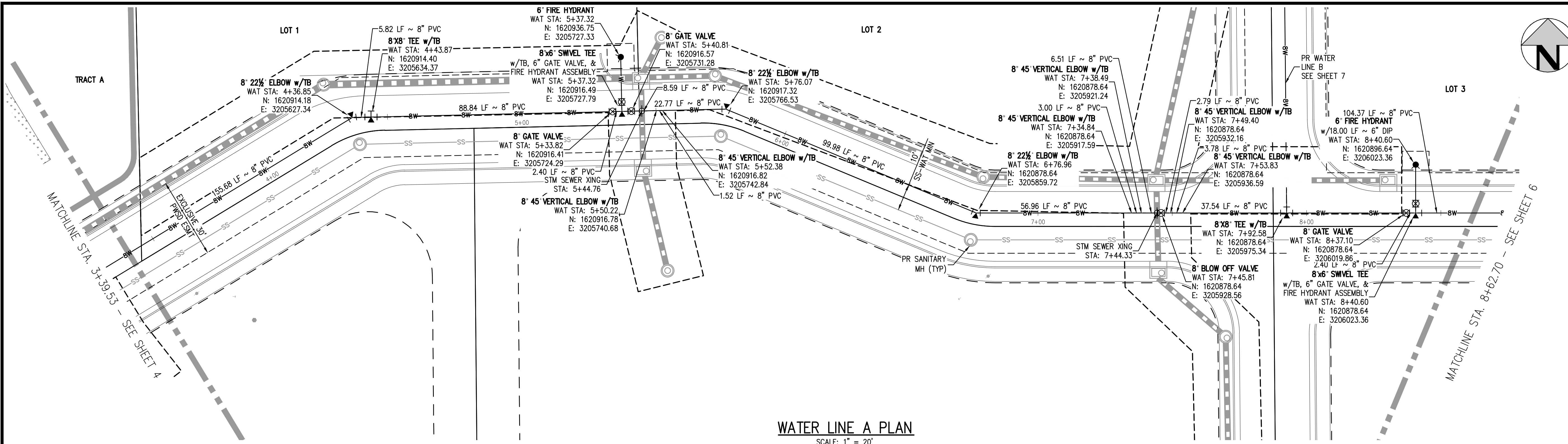
PLAZA STREET PARTNERS

LINCOLN & DRANSFELDT
WATER LINE A PLAN & PROFILE

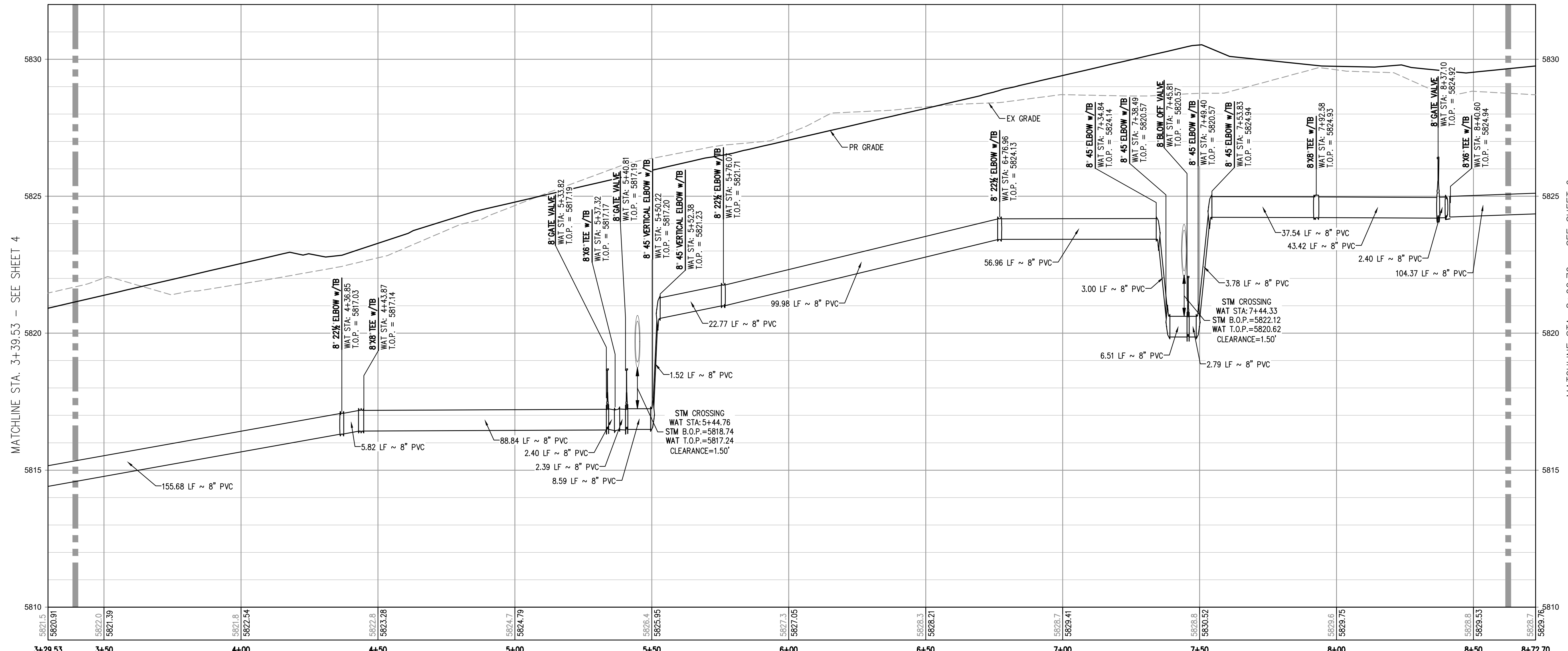
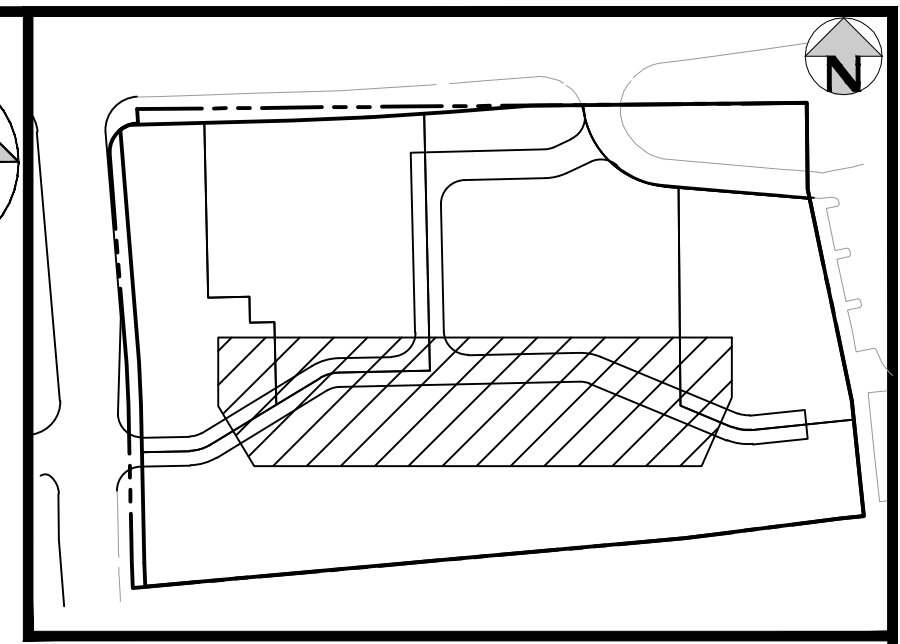
PRELIMINARY
NOT FOR
CONSTRUCTION

PROJECT #: 200829
SHEET NUMBER
4
4 OF 13

NO CHANGES ARE TO BE MADE TO THIS DRAWING WITHOUT WRITTEN PERMISSION OF HARRIS KOCHER SMITH.



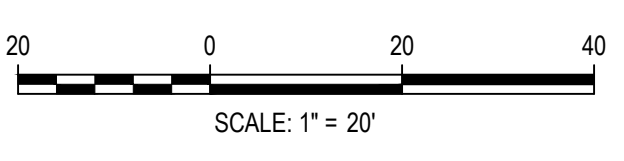
WATER LINE A PLAN
SCALE: 1" = 20'



WATER LINE A PROFILE
HORIZONTAL SCALE: 1" = 20'
VERTICAL SCALE: 1" = 2'

- NOTES:**
1. DEPTH UNKNOWN, CONTRACTOR SHALL VERIFY DEPTH PRIOR TO CONSTRUCTION AND NOTIFY ENGINEER OF ANY CONFLICTS.
 2. A MINIMUM OF 18" VERTICAL CLEARANCE MUST BE PROVIDED BETWEEN ALL UTILITIES AT CROSSINGS.

FILE PATH: K:\200829\ENGINEERING\UTILITIES\WATERM&S - WATER PLAN & PROFILE.DWG LAYOUT: LAYOUT1 (2)
NO SCALE: THU 07/21/22 11:18:58A BY: OLIVIA MCCracken



ISSUE DATE: 08-16-2021	
DATE	REVISION COMMENTS
04-12-2022	PER PWSD COMMENTS
07-21-2022	PER PWSD COMMENTS

HKS HARRIS KOCHER SMITH
1120 Lincoln Street, Suite 1000
Denver, Colorado 80203
P: 303.623.6300 F: 303.623.6311
HarrisKocherSmith.com

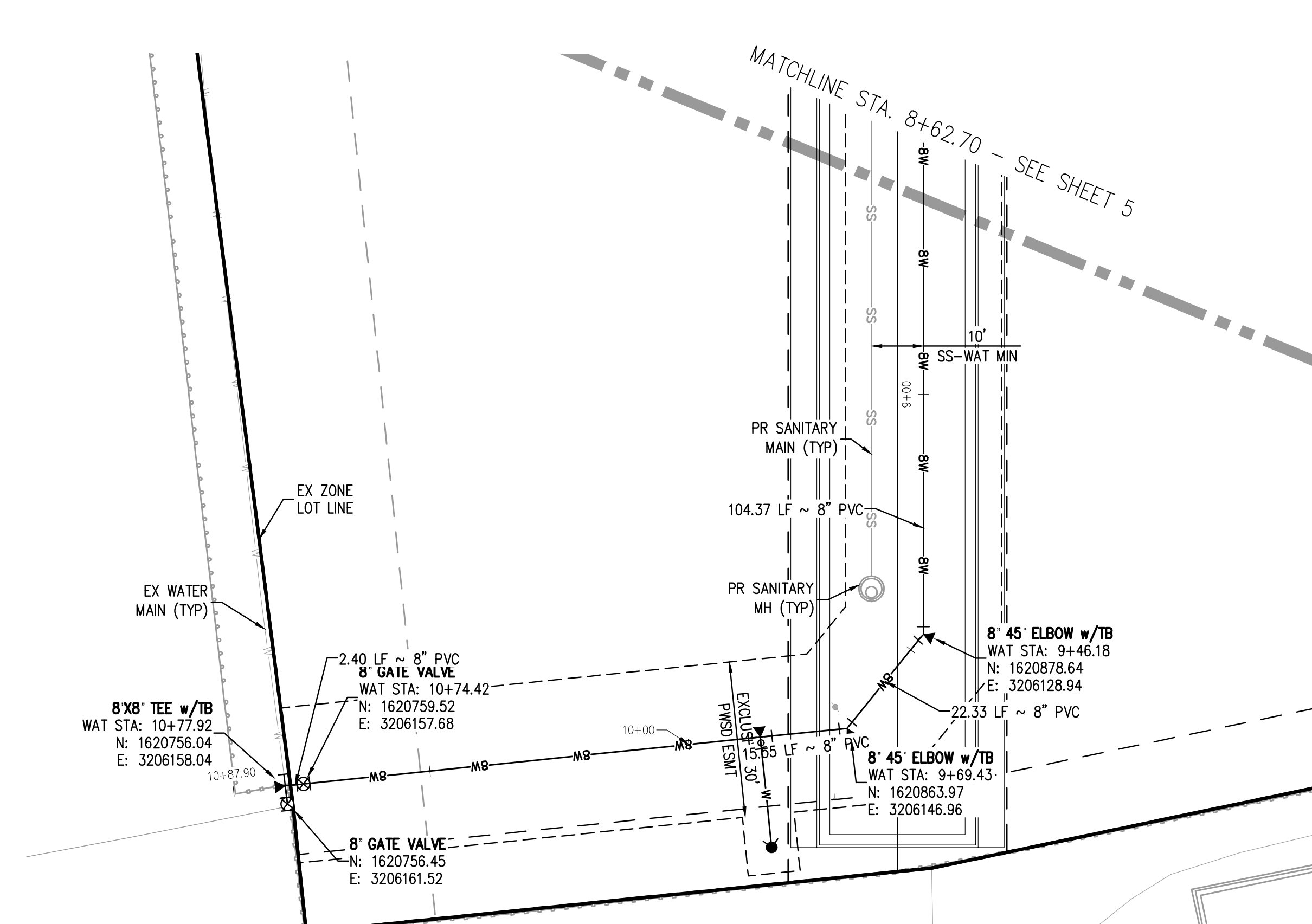
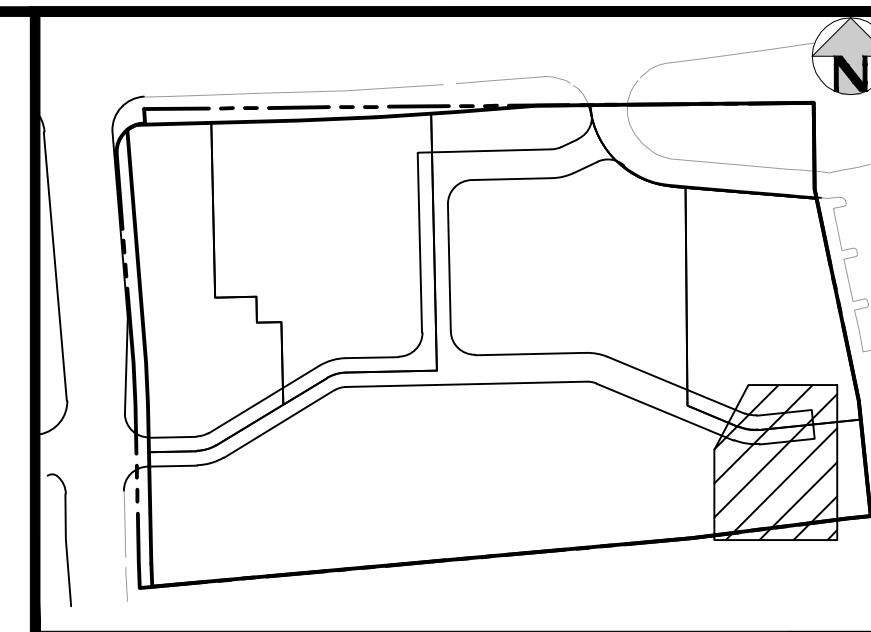
PLAZA STREET PARTNERS

LINCOLN & DRANSFELDT
WATER LINE A PLAN & PROFILE

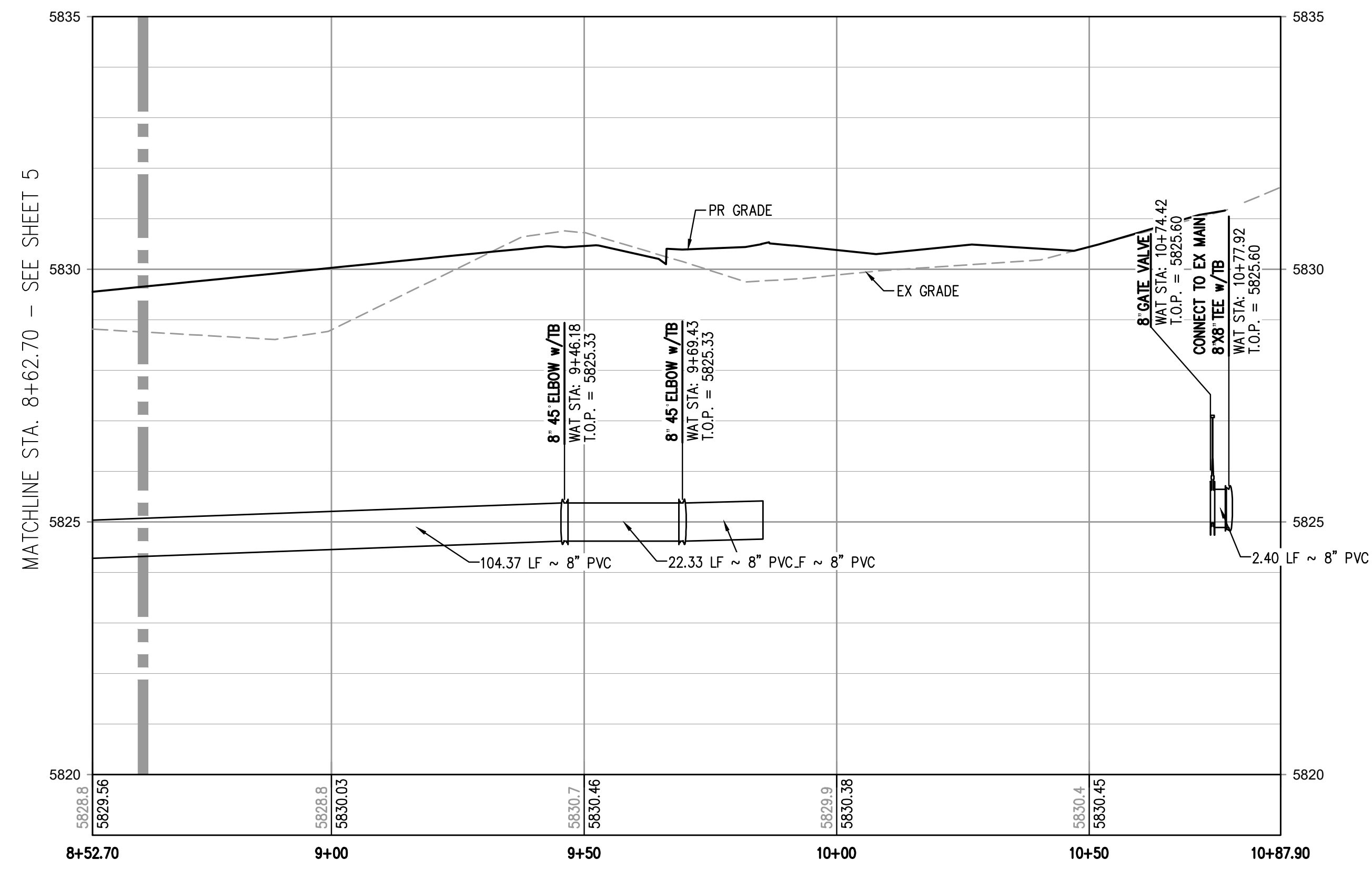
PRELIMINARY
NOT FOR
CONSTRUCTION

PROJECT #: 200829
SHEET NUMBER
5
5 OF 13

NO CHANGES ARE TO BE MADE TO THIS DRAWING WITHOUT WRITTEN PERMISSION OF HARRIS KOCHER SMITH.



WATER LINE A PLAN
SCALE: 1" = 20'



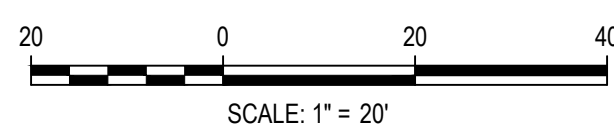
WATER LINE A PROFILE
HORIZONTAL SCALE: 1" = 20'
VERTICAL SCALE: 1" = 2'

- NOTES:**
1. DEPTH UNKNOWN, CONTRACTOR SHALL VERIFY DEPTH PRIOR TO CONSTRUCTION AND NOTIFY ENGINEER OF ANY CONFLICTS.
 2. A MINIMUM OF 18" VERTICAL CLEARANCE MUST BE PROVIDED BETWEEN ALL UTILITIES AT CROSSINGS.

FILE PATH: K:\200829\ENGINEERING\UTILITIES\WATER\M&S - WATER PLAN & PROFILE.DWG LAYOUT: LAYOUT1 (3)
NO SCALE: THU 07/21/22 11:18:23A BY: OLIVIA MCCracken



Know what's below.
Call before you dig.



DESIGNED BY: MJS
CHECKED BY: RCP
DRAWN BY: MJS

ISSUE DATE: 08-16-2021

DATE	REVISION COMMENTS
11-17-2021	PER PWSO COMMENTS
04-12-2022	PER PWSO COMMENTS
07-21-2022	PER PWSO COMMENTS



1120 Lincoln Street, Suite 1000
Denver, Colorado 80203
P: 303.623.6300 F: 303.623.6311
HarrisKocherSmith.com

PLAZA STREET PARTNERS

LINCOLN & DRANSFELDT
WATER LINE A PLAN & PROFILE

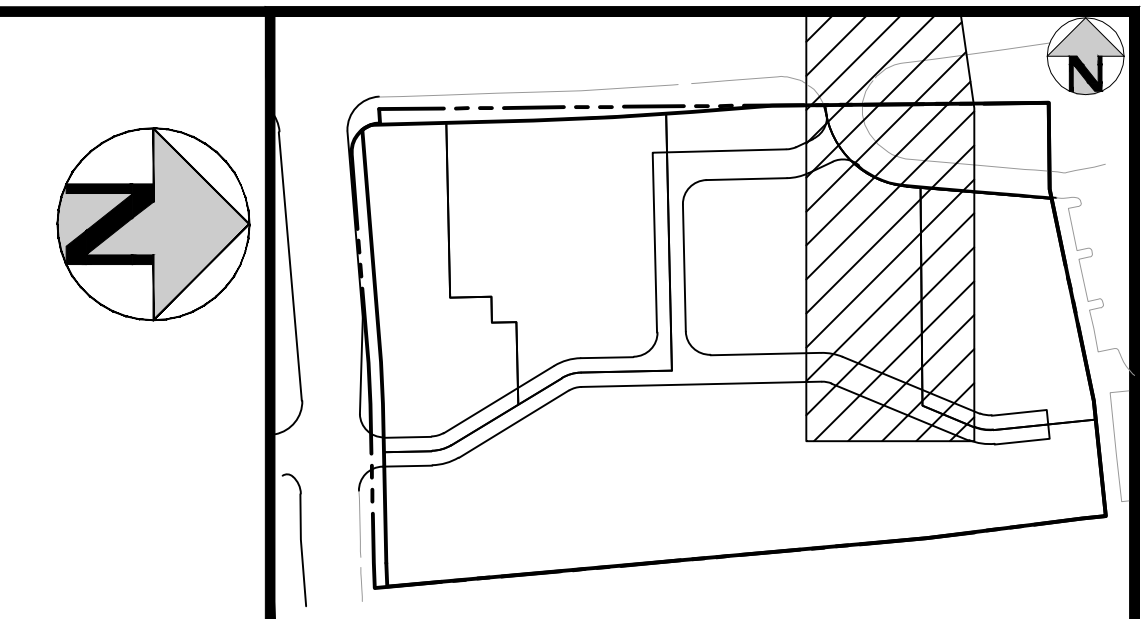
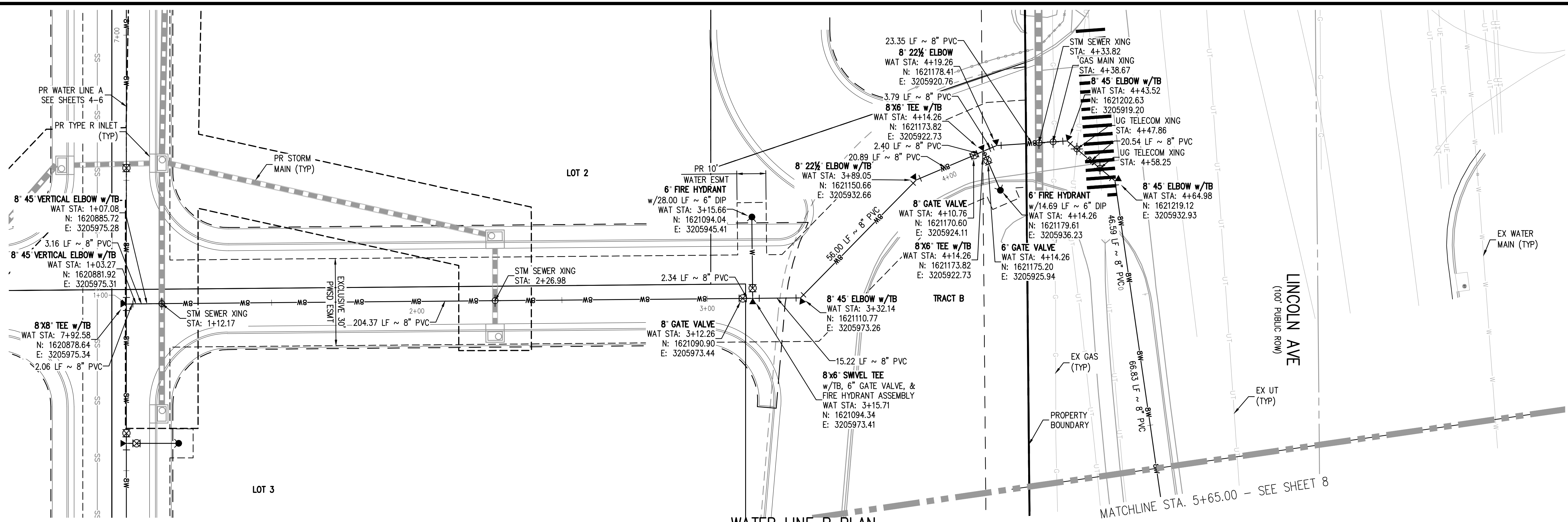
PRELIMINARY
NOT FOR
CONSTRUCTION

PROJECT #: 200829
SHEET NUMBER

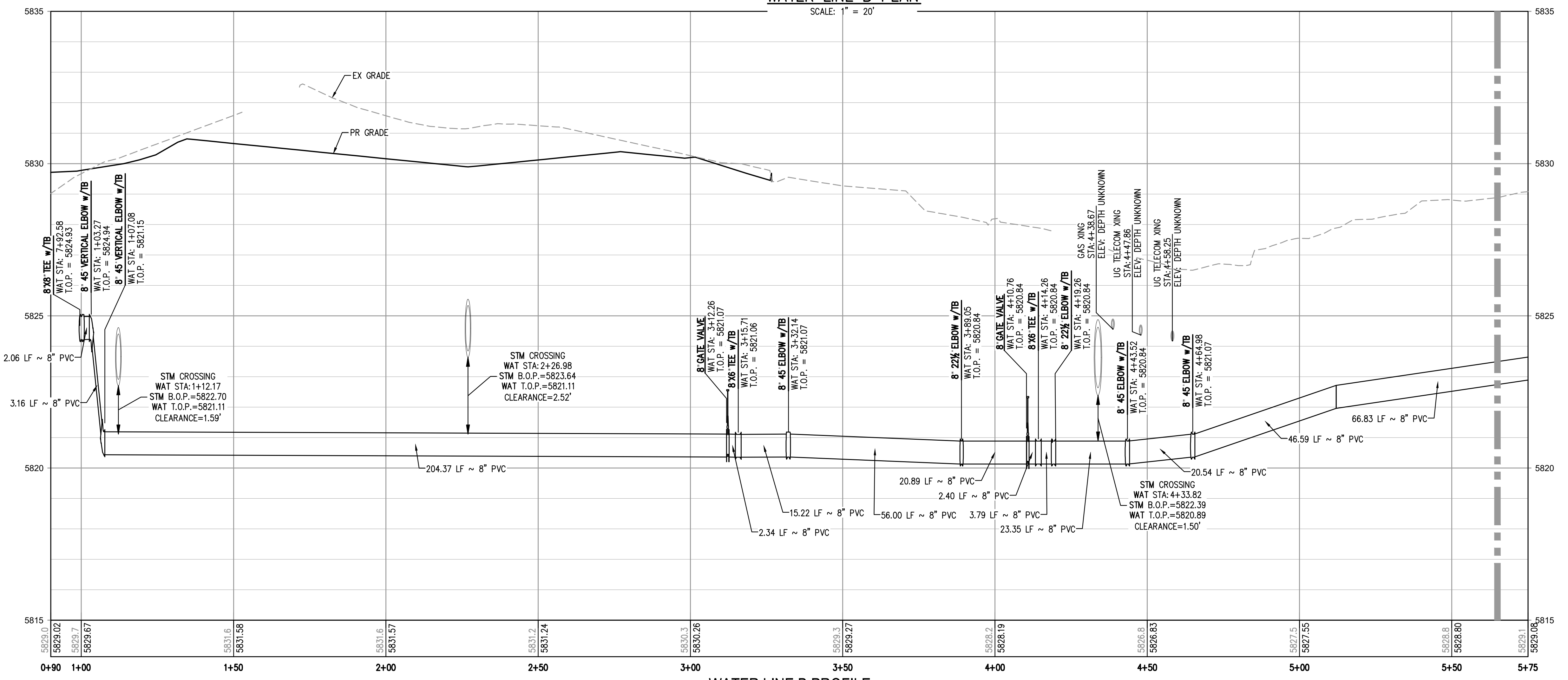
6

6 OF 13

NO CHANGES ARE TO BE MADE TO THIS DRAWING WITHOUT WRITTEN PERMISSION OF HARRIS KOCHER SMITH.



WATER LINE B PLAN
SCALE: 1" = 20'



WATER LINE B PROFILE
HORIZONTAL SCALE: 1" = 20'
VERTICAL SCALE: 1" = 2'

MATCHLINE STA. 5+65.00 - SEE SHEET 8

- NOTES:**
1. DEPTH UNKNOWN. CONTRACTOR SHALL VERIFY DEPTH PRIOR TO CONSTRUCTION AND NOTIFY ENGINEER OF ANY CONFLICTS.
 2. A MINIMUM OF 18" VERTICAL CLEARANCE MUST BE PROVIDED BETWEEN ALL UTILITIES AT CROSSINGS.

FILE PATH: K:\200829\ENGINEERING\UTILITIES\WATER\WATER LINE B PLAN & PROFILE.DWG LAYOUT LAYOUT
NO SCALE: THU 07/21/22 11:18:37A BY: OLIVIA MCCracken



DESIGNED BY: MJS
CHECKED BY: RCP
DRAWN BY: MJS

ISSUE DATE: 08-16-2021	
DATE	REVISION COMMENTS
11-17-2021	PER PWSD COMMENTS
04-12-2022	PER PWSD COMMENTS
07-21-2022	PER PWSD COMMENTS

HKS HARRIS KOCHER SMITH
1120 Lincoln Street, Suite 1000
Denver, Colorado 80203
P: 303.623.6300 F: 303.623.6311
HarrisKocherSmith.com

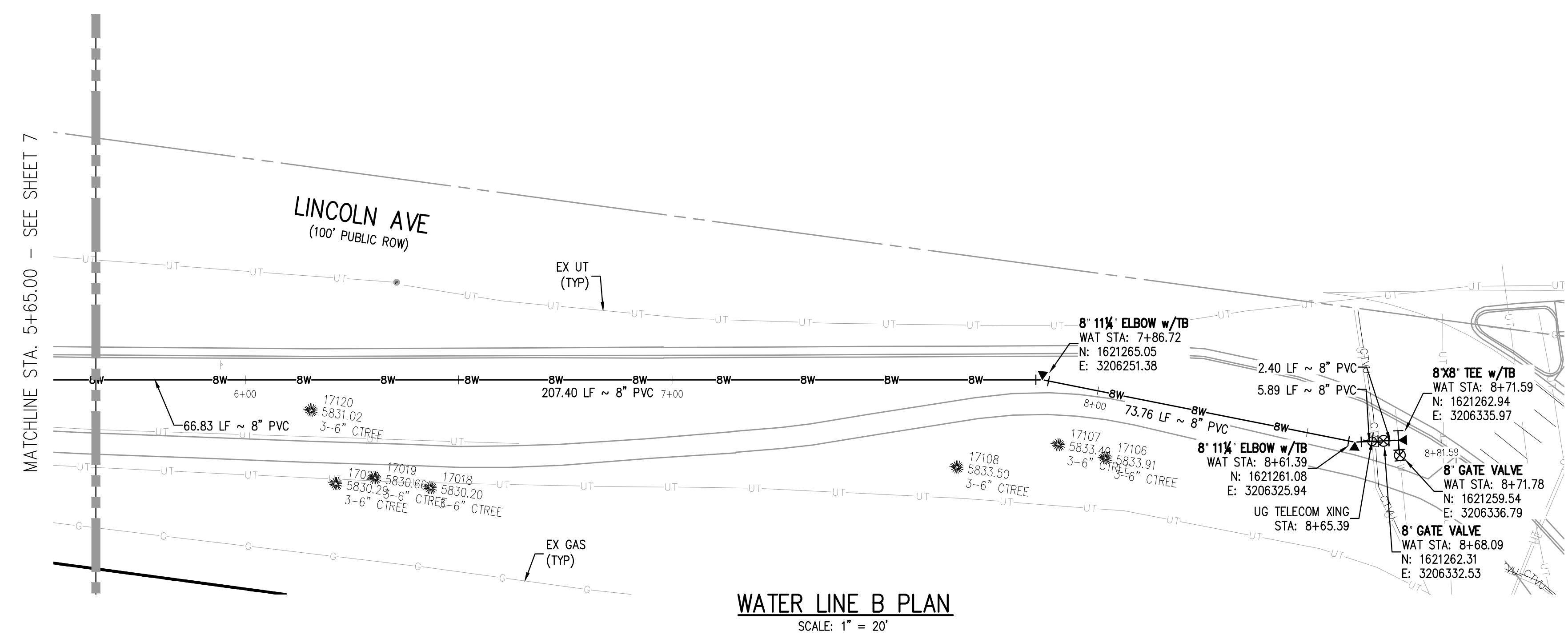
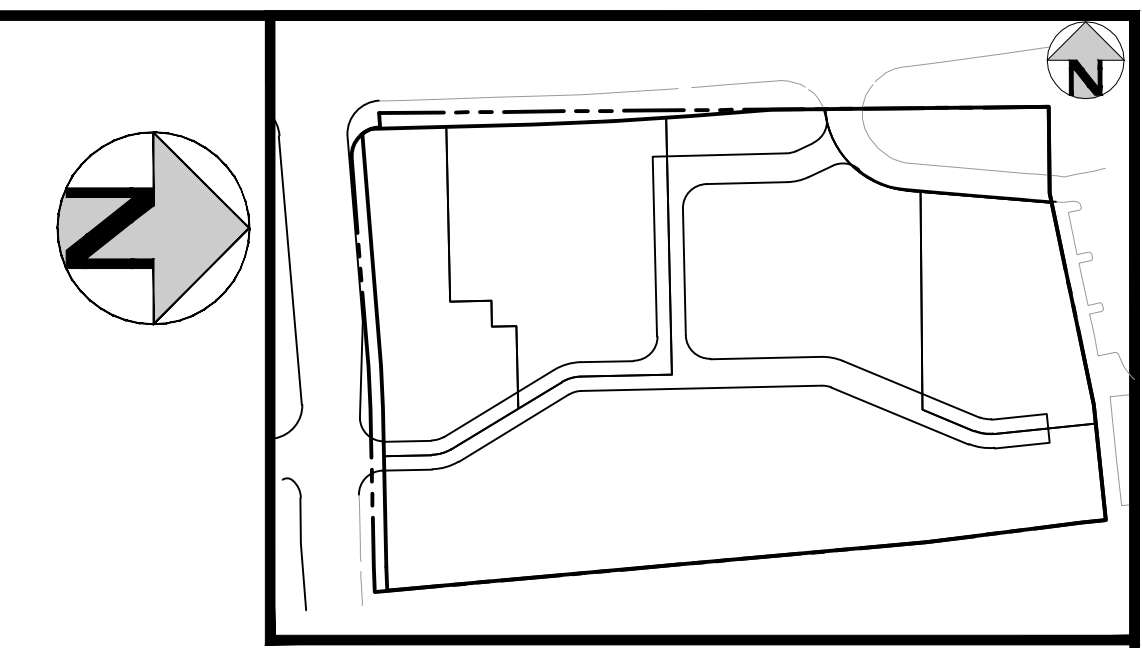
PLAZA STREET PARTNERS

LINCOLN & DRANSFELDT
WATER LINE B PLAN & PROFILE

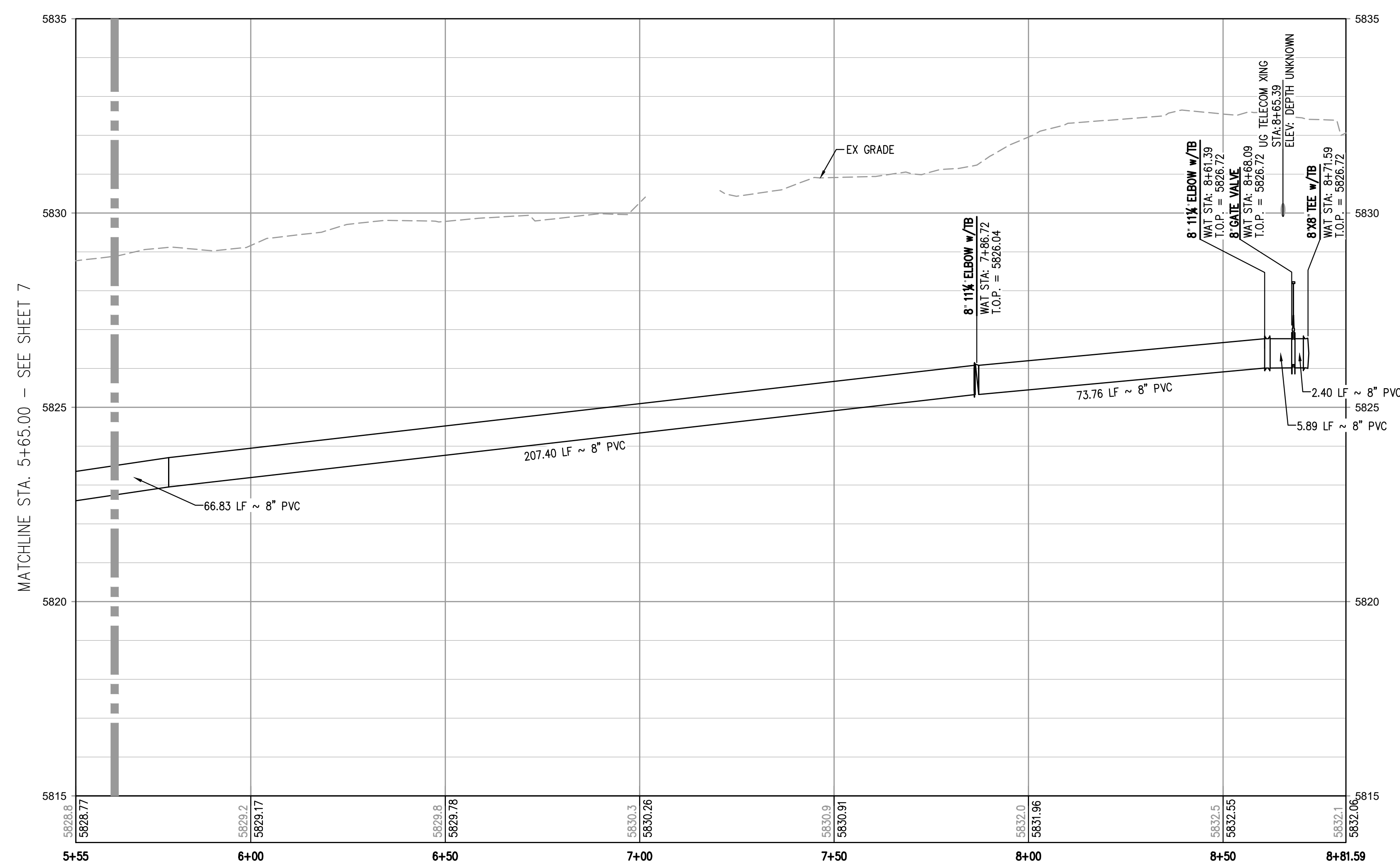
PRELIMINARY
NOT FOR
CONSTRUCTION

PROJECT #: 200829
SHEET NUMBER
7
7 OF 13

NO CHANGES ARE TO BE MADE TO THIS DRAWING WITHOUT WRITTEN PERMISSION OF HARRIS KOCHER SMITH.



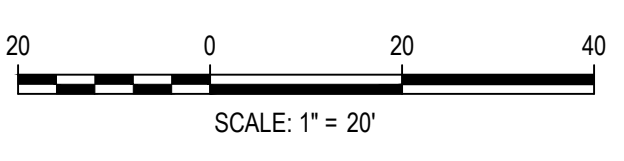
WATER LINE B PLAN
SCALE: 1" = 20'



WATER LINE B PROFILE
HORIZONTAL SCALE: 1" = 20'
VERTICAL SCALE: 1" = 2'

- NOTES:**
1. DEPTH UNKNOWN. CONTRACTOR SHALL VERIFY DEPTH PRIOR TO CONSTRUCTION AND NOTIFY ENGINEER OF ANY CONFLICTS.
 2. A MINIMUM OF 18" VERTICAL CLEARANCE MUST BE PROVIDED BETWEEN ALL UTILITIES AT CROSSINGS.

FILE PATH: K:\200829\ENGINEERING\UTILITIES\WATER\W&S - WATER LINE B PLAN & PROFILE.DWG LAYOUT LAYOUT2
NO SCALE: THU 07/21/22 11:18:33A BY: OLIVIA MCCracken
PLOTTED: THU 07/21/22 11:18:33A BY: OLIVIA MCCracken



DATE	REVISION COMMENTS
11-17-2021	PER PWSO COMMENTS
04-12-2022	PER PWSO COMMENTS
07-21-2022	PER PWSO COMMENTS

HKS HARRIS KOCHER SMITH
1120 Lincoln Street, Suite 1000
Denver, Colorado 80203
P: 303.623.6300 F: 303.623.6311
HarrisKocherSmith.com

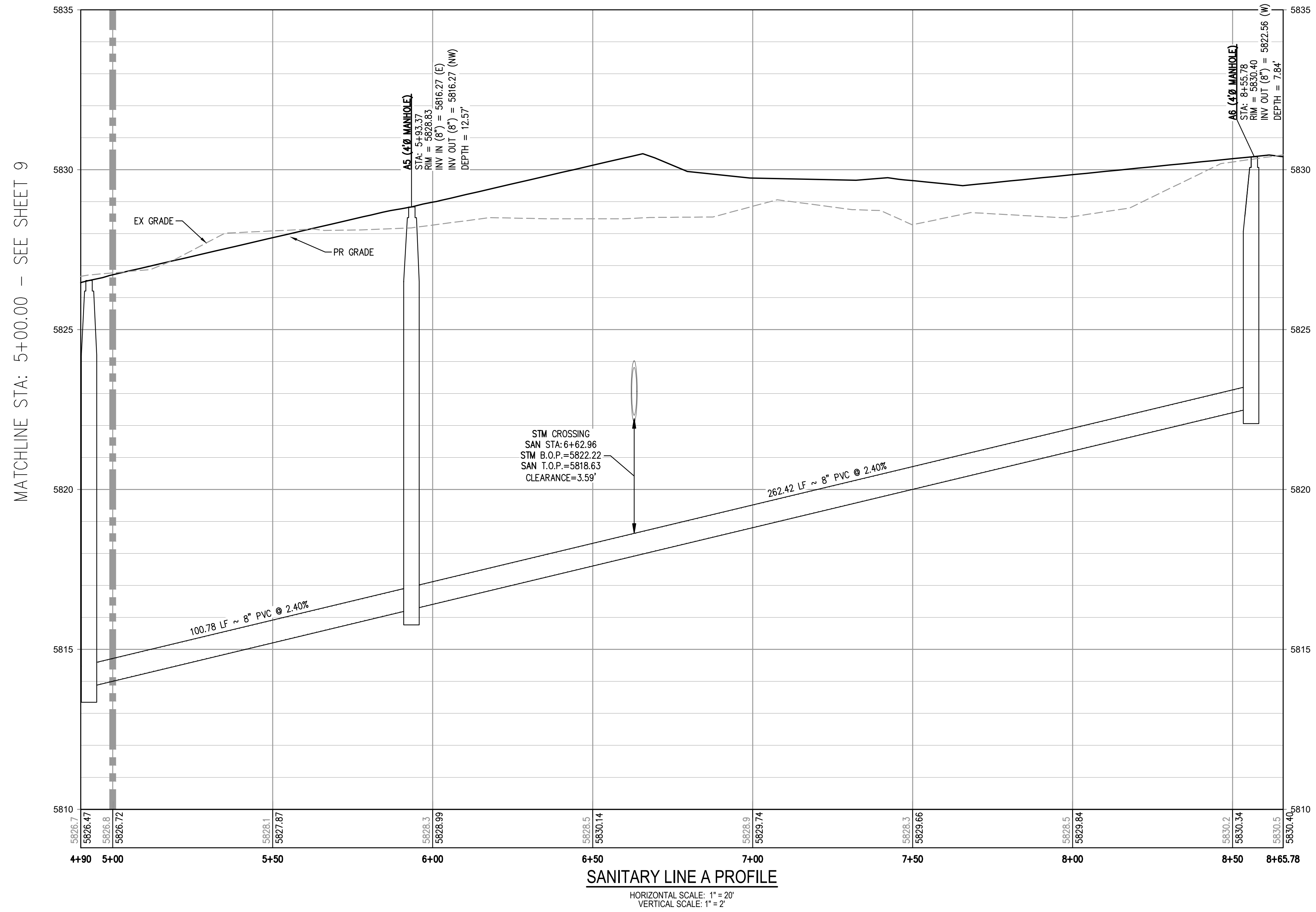
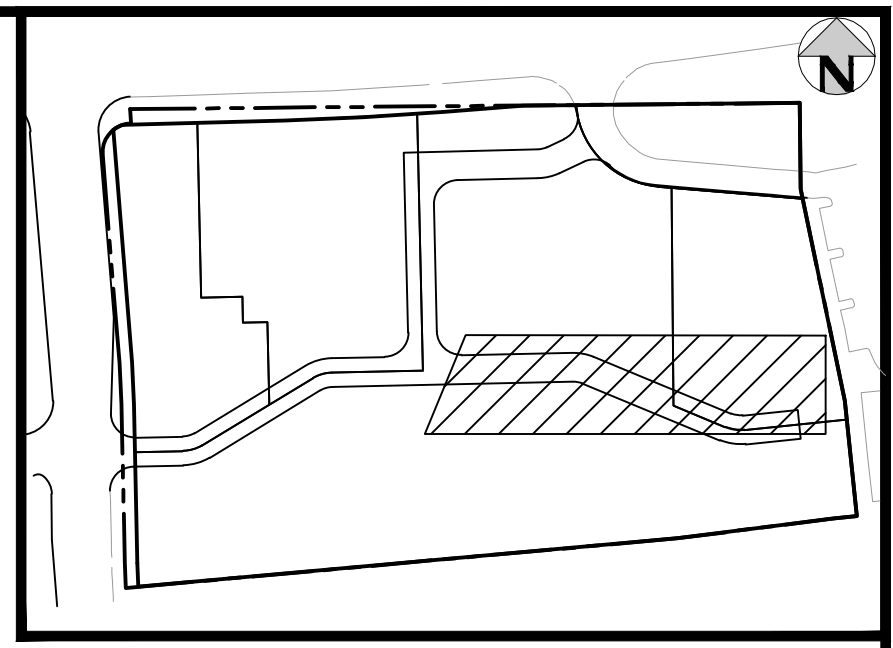
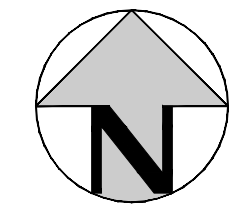
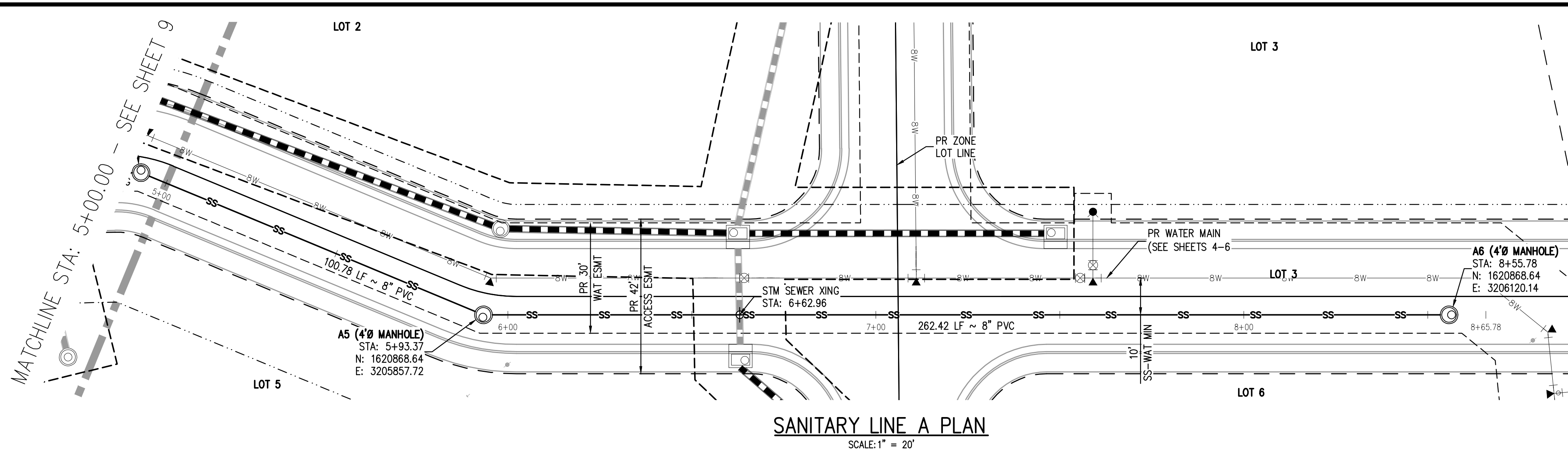
PLAZA STREET PARTNERS

LINCOLN & DRANSFELDT
WATER LINE B PLAN & PROFILE

PRELIMINARY
NOT FOR
CONSTRUCTION

PROJECT #: 200829
SHEET NUMBER
8
8 OF 13

NO CHANGES ARE TO BE MADE TO THIS DRAWING WITHOUT WRITTEN PERMISSION OF HARRIS KOCHER SMITH.

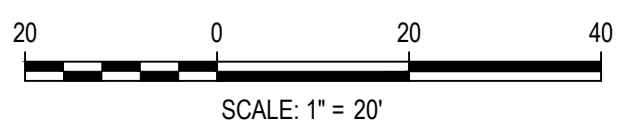


- NOTES:**
1. DEPTH UNKNOWN, CONTRACTOR SHALL VERIFY DEPTH PRIOR TO CONSTRUCTION AND NOTIFY ENGINEER OF ANY CONFLICTS.
 2. A MINIMUM OF 18" VERTICAL CLEARANCE MUST BE PROVIDED BETWEEN ALL UTILITIES AT CROSSINGS.

FILEPATH: K:\200829\ENGINEERING\UTILITIES\SANITARY\1\1\85 - SANITARY PLAN & PROFILE.DWG LAYOUT: LAYOUT1 (2)
 4 VIEWS: 1: SANITARY PLAN & PROFILE.DWG LAYOUT: LAYOUT1 (2) PLOT: 11:18:58A BY: OLIVIA MCCracken
 PLOTTED: THU 07/21/2022 11:18:58A BY: OLIVIA MCCracken



Know what's below.
 Call before you dig.



DESIGNED BY: MJS
 CHECKED BY: RCP
 DRAWN BY: MJS

DATE	REVISION COMMENTS
04-12-2022	PER PWSD COMMENTS
07-21-2022	PER PWSD COMMENTS

HKS HARRIS KOCHER SMITH
 1120 Lincoln Street, Suite 1000
 Denver, Colorado 80203
 P: 303.623.6300 F: 303.623.6311
 HarrisKocherSmith.com

PLAZA STREET PARTNERS

LINCOLN & DRANSFELDT
 SANITARY PLAN & PROFILE

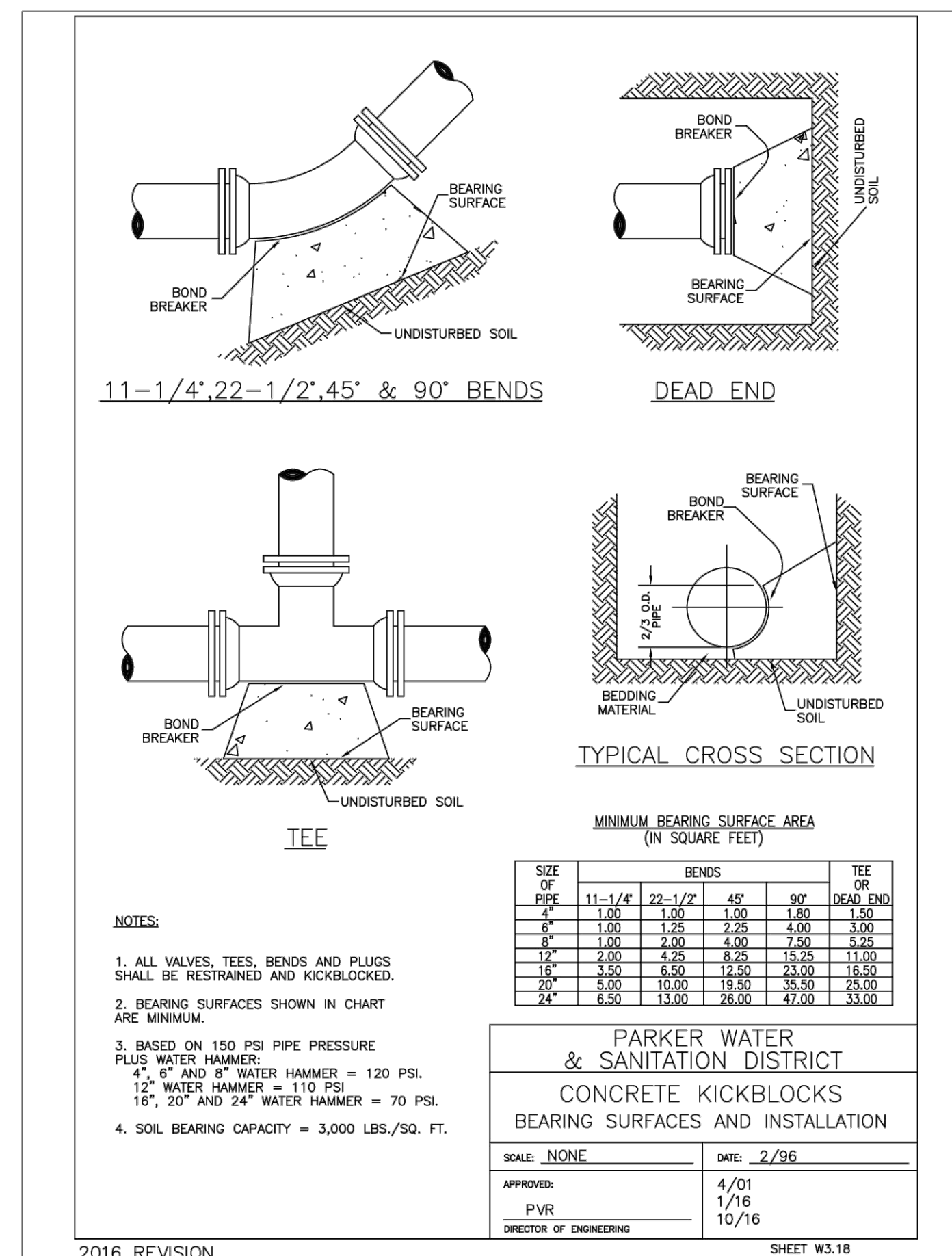
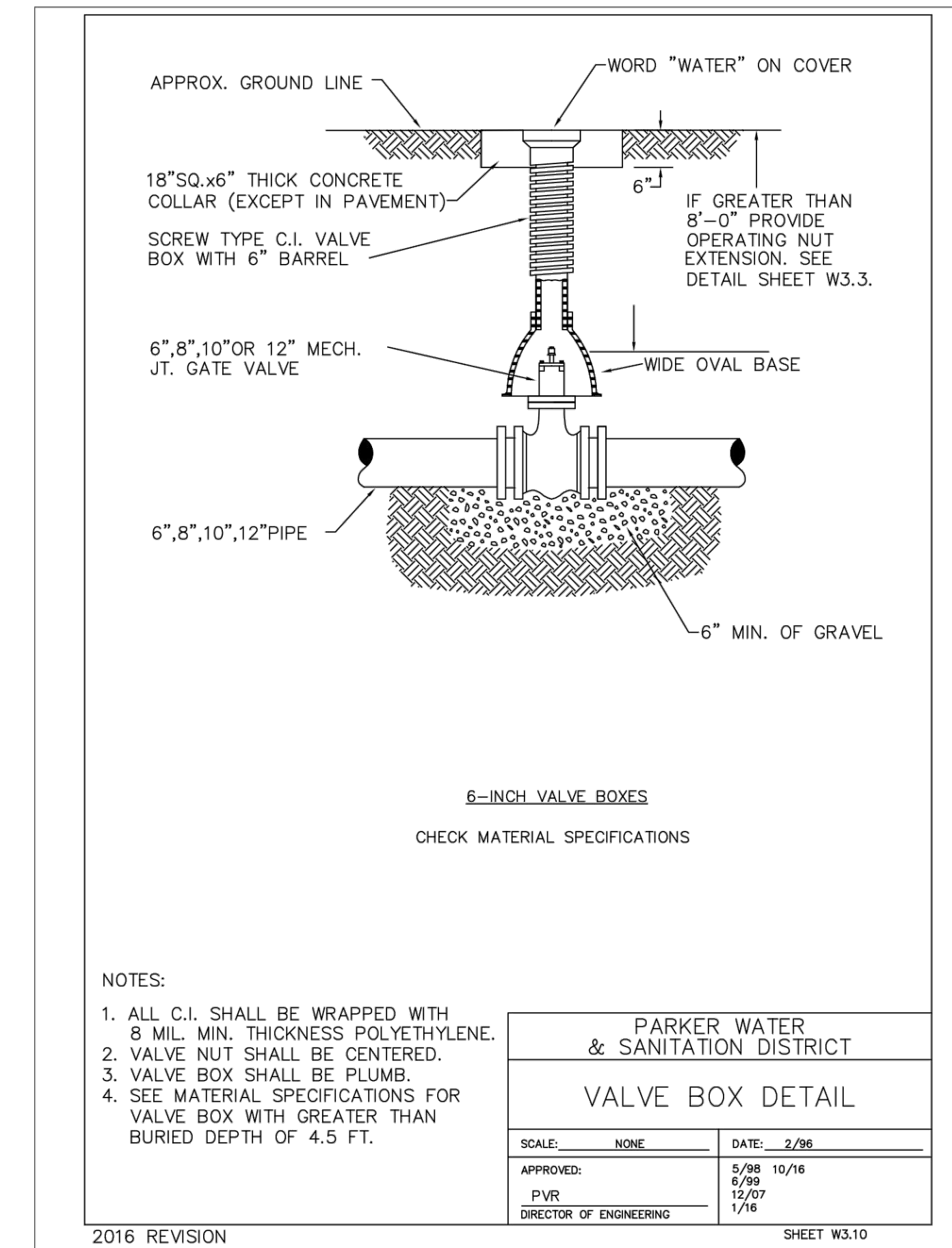
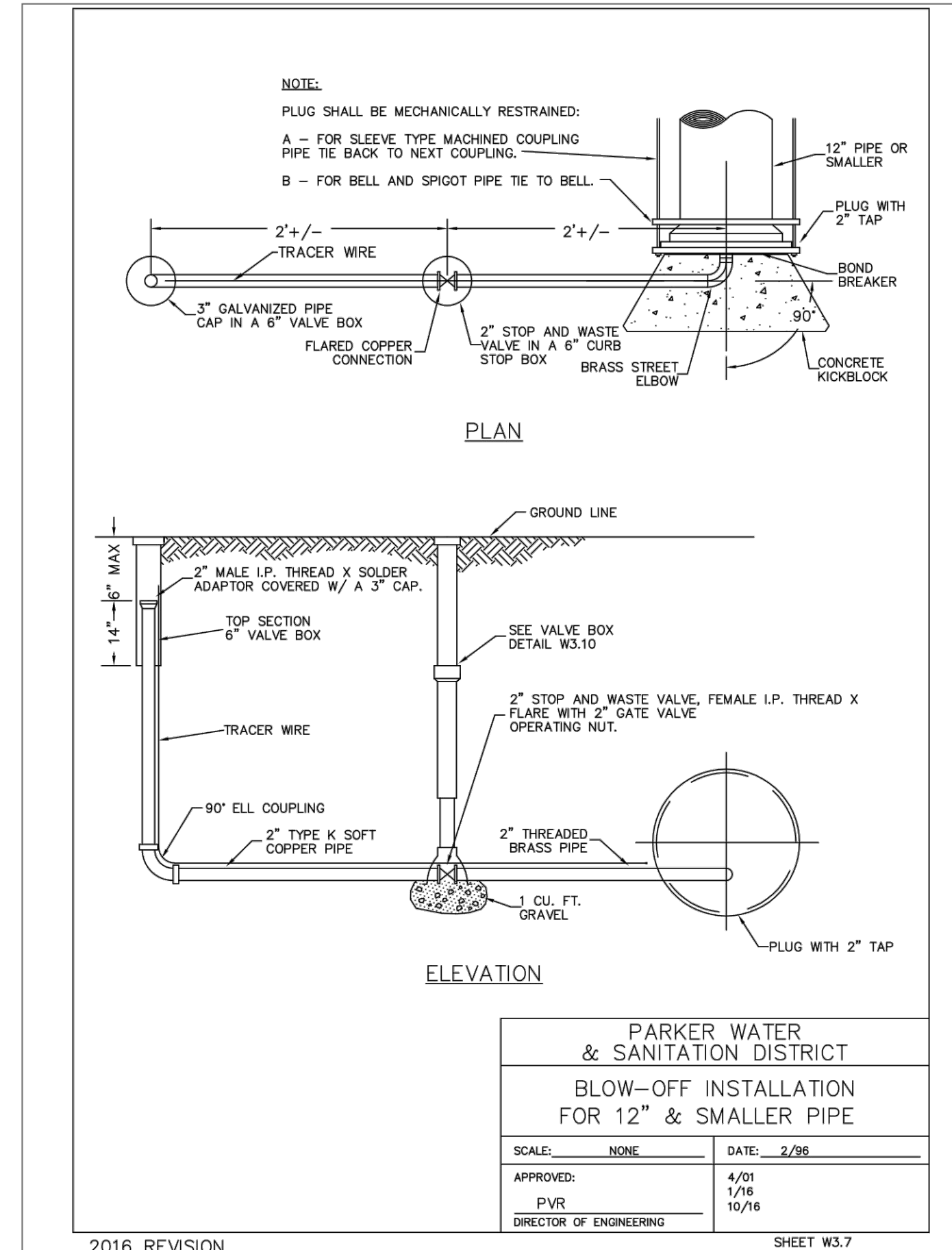
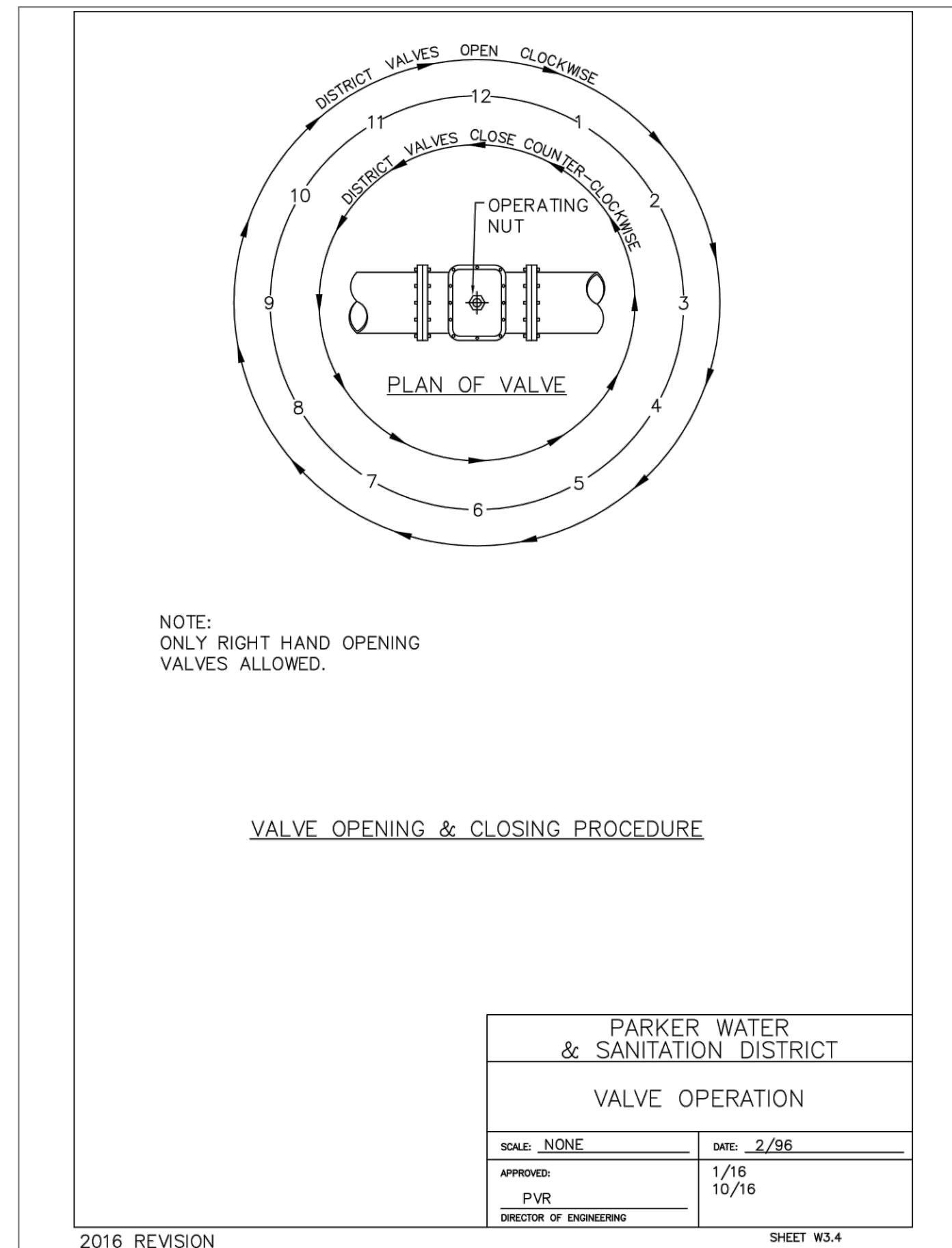
PRELIMINARY
 NOT FOR
 CONSTRUCTION

PROJECT #: 200829
 SHEET NUMBER

10

10 OF 13

NO CHANGES ARE TO BE MADE TO THIS DRAWING WITHOUT WRITTEN PERMISSION OF HARRIS KOCHER SMITH.



FILE PATH: K:\200829\ENGINEERING\UTILITIES\WATER\W&S - DETAILS.DWG LAYOUT: 10 WATER DETAILS
NO. 8476: 11/16/05
PLOTTED: THU 07/21/02 11:19:55A BY: OLIVIA MCCrackEN



Know what's below.
Call before you dig.

DESIGNED BY: <DESIGNER>
CHECKED BY: <REVIEWER>
DRAWN BY: <DRAWN>

ISSUE DATE: 08-16-2021

DATE	REVISION COMMENTS
04-12-2022	PER PWSD COMMENTS
07-21-2022	PER PWSD COMMENTS



PLAZA STREET PARTNERS

LINCOLN & DRANSFELDT
WATER DETAILS

PROJECT #: 200829
SHEET NUMBER

11

11 OF 13

NO CHANGES ARE TO BE MADE TO THIS DRAWING WITHOUT WRITTEN PERMISSION OF HARRIS KOCHER SMITH.

INSPECTION POLICY:

1. ALL SERVICE INSPECTIONS MUST BE SCHEDULED WITH THE DISTRICT OFFICE AT LEAST 24 HOURS IN ADVANCE OF THE REQUESTED INSPECTION.
2. IF THE CONTRACTOR IS NOT READY FOR INSPECTION WHEN THE INSPECTOR ARRIVES AT THE SITE, A RE-INSPECTION WILL HAVE TO BE SCHEDULED IN ACCORDANCE WITH NOTE 1 ABOVE AND A RE-INSPECTION FEE CHARGED.
3. SHOULD THE SERVICE LINES BE DAMAGED BY LATER CONSTRUCTION, AN INSPECTION OF THE REPAIR WILL BE REQUIRED IN ACCORDANCE WITH NOTES 1 AND 2 ABOVE.
4. THE CONTRACTOR SHALL LEAVE ALL PIPE AND FITTINGS EXPOSED FOR THE INSPECTOR TO OBSERVE. INSPECTORS WILL NOT ENTER ANY EXCAVATIONS TO CHECK MATERIALS. THE TOP LAYER OF BEDDING CAN BE ADDED AFTER THE INSPECTION HAS BEEN COMPLETED.
5. ALL EXCAVATIONS SHALL BE IN ACCORDANCE WITH OSHA STANDARDS.
6. LOTS WITHOUT BUILDING ADDRESSES OR LOT AND BLOCK NUMBERS BEFORE DISTRICT INSPECTION OR METER SET WILL FAIL AUTOMATICALLY.
7. CONTRACTOR MUST BE PRESENT AT TIME OF INSPECTION UNLESS COORDINATED WITH DISTRICT INSPECTOR.

INSTALLATION NOTES:

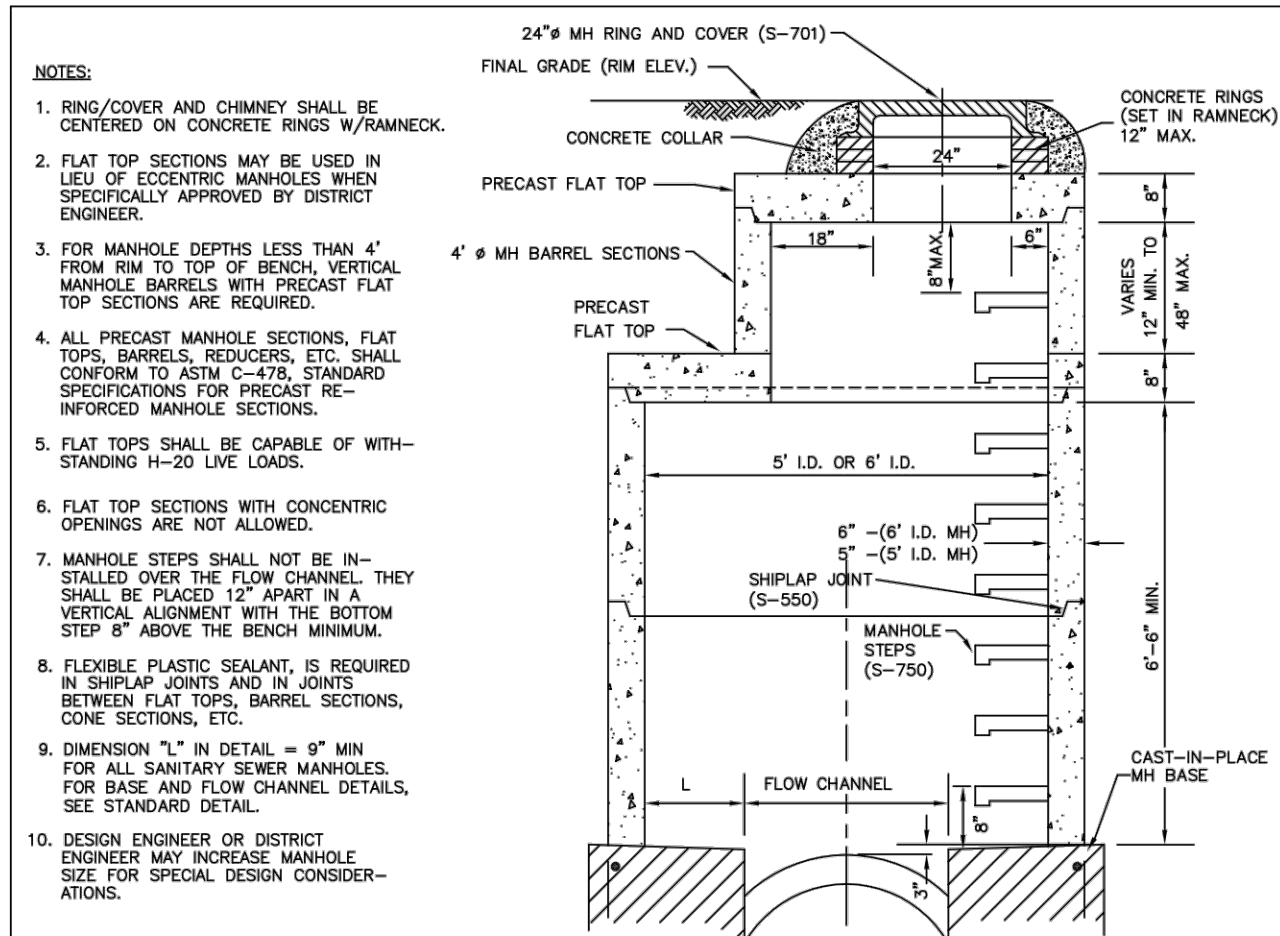
SEWER

1. ACCEPTABLE PIPE MATERIALS ARE TO BE SDR 35 PVC PIPE, ABS PIPE AND PVC SCHD 40 PIPE. APPROVED BEDDING IS TO BE SQUEEGEE.
2. NO-HUB CLAMPS SHALL BE USED TO JOIN 2 MALE PIPE ENDS WITH A MAXIMUM DEFLECTION OF 3'.
3. MINIMUM GRADE SHALL BE 2%.
4. INSTALLATION SHALL INCLUDE NO MORE THAN 3 BENDS. 90° BENDS ARE NOT ALLOWED. SOLVENT WELDED PIPE WILL NOT BE ALLOWED.
5. CLEAN-OUTS SHALL BE INSTALLED AT 100' INTERVALS AND EVERY CHANGE IN DIRECTION. CLEAN-OUTS ARE NOT REQUIRED FOR SERVICES LESS THAN 100' UNLESS THERE ARE CHANGES IN DIRECTION. PROVIDE DUAL CLEAN-OUT WITHIN 5 FEET OF FOUNDATION.
6. STRESSING OF THE PIPE BETWEEN FITTINGS WILL NOT BE ALLOWED.
7. SEWER SERVICE LINE SHALL NOT BE LOCATED UNDER CONCRETE SURFACE.
8. ALL SERVICES WILL BE PERMANENTLY MARKED ON CURB FACE AS FOLLOWS:
 X FOR SANITARY SEWER SERVICE
 W FOR WATER SERVICES

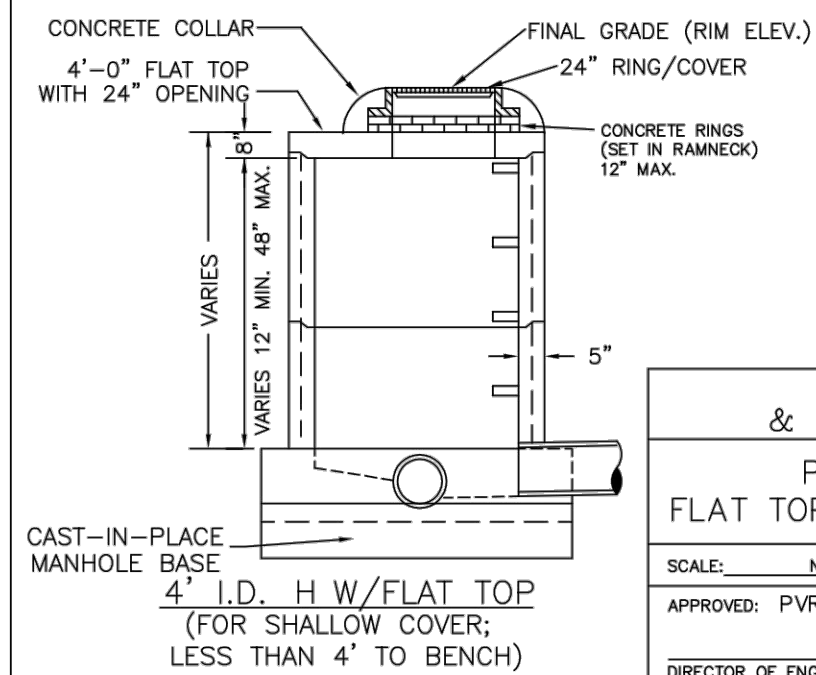
PARKER WATER & SANITATION DISTRICT	
DISTRICT POLICIES & INSTALLATION NOTES FOR SEWER SERVICES	
SCALE: NONE	DATE: 2/96
APPROVED: PVR	01/02 10/16 1/08 1/16
DIRECTOR OF ENGINEERING	

2016 REVISION

SHEET S1.1



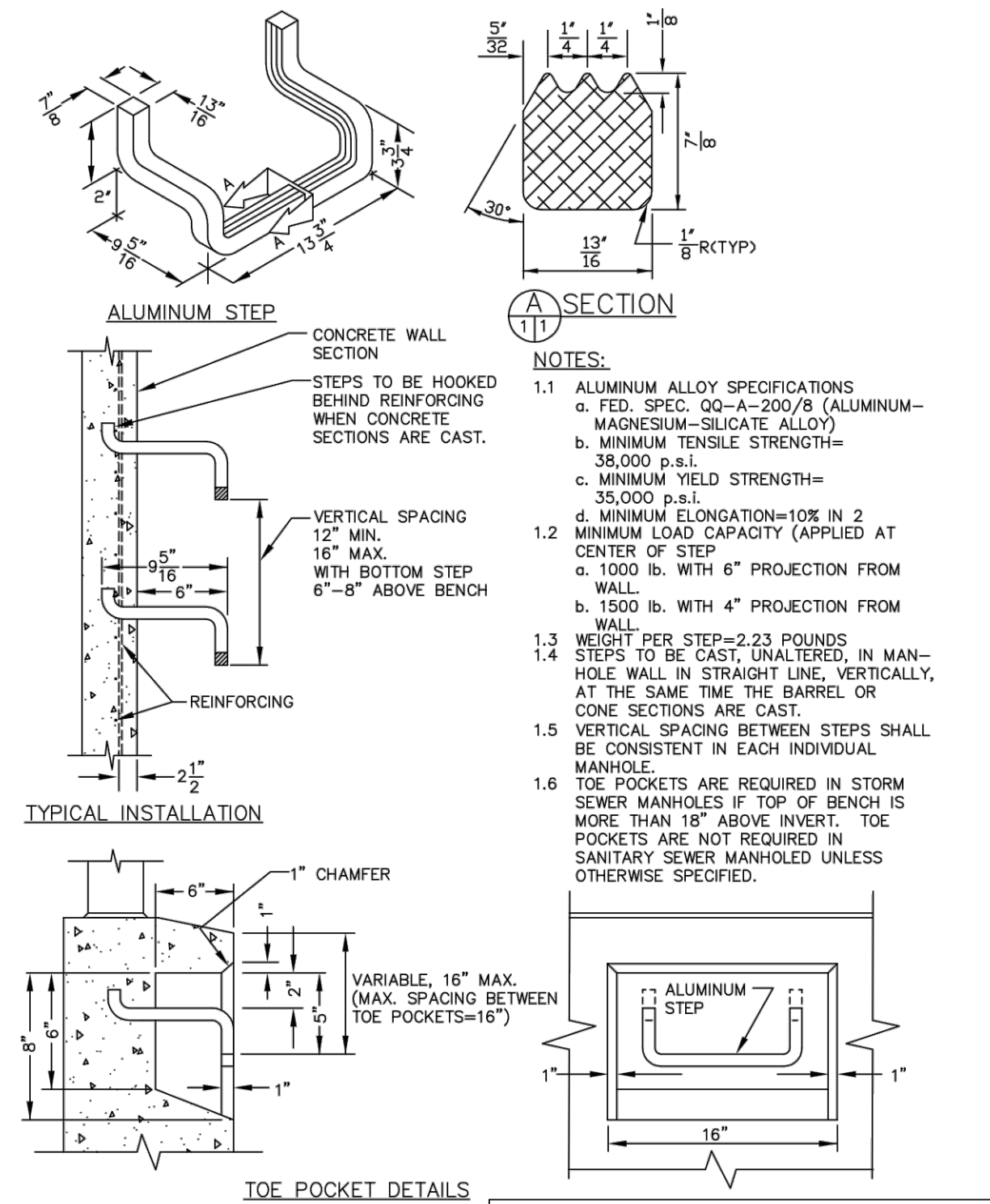
FLAT TOP WITH ECCENTRIC OPENING
 5" I.D. MANHOLE OR 6" I.D. MANHOLE
 (33" Ø - 42" Ø PIPE) (48" Ø PIPE)



PARKER WATER & SANITATION DISTRICT	
PRECAST MANHOLE FLAT TOP W/ ECCENTRIC OPENING	
SCALE: NONE	DATE: 2/96
APPROVED: PVR	4/01 1/16 10/16
DIRECTOR OF ENGINEERING	

2016 REVISION

SHEET S3.2

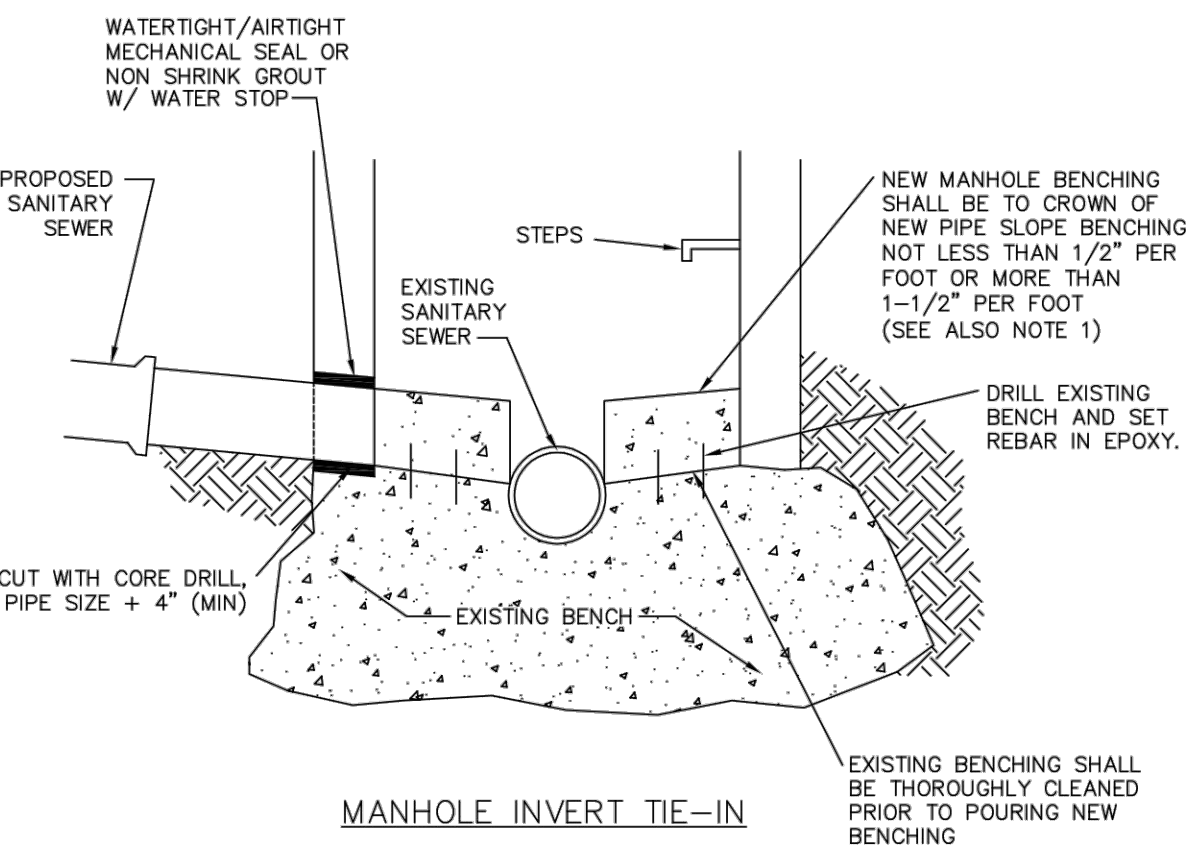


TYPICAL INSTALLATION
STANDARD EXTRUDED ALUMINUM MANHOLE STEP

PARKER WATER & SANITATION DISTRICT	
STANDARD EXTRUDED ALUMINUM MANHOLE STEP	
SCALE: NONE	DATE: 2/96
APPROVED: PVR	01/16 10/16
DIRECTOR OF ENGINEERING	

2016 REVISION

SHEET S3.10



MANHOLE INVERT TIE-IN

- NOTES**
- 1 - NEW BENCH SHALL INCLUDE REINFORCEMENT TO CONTROL CONCRETE CRACKING.

PARKER WATER & SANITATION DISTRICT	
MANHOLE INVERT TIE-IN DETAIL	
SCALE: NONE	DATE: 2/96
APPROVED: PVR	1/16 10/16
DIRECTOR OF ENGINEERING	

2016 REVISION

SHEET S4.9

FILE PATH: K:\200829\ENGINEERING\UTILITIES\WATER\M&S - DETAILS.DWG - LAYOUT - 11 WATER DETAILS
 NO. REVISED: 0
 PLOTTED: THU 07/21/22 11:19:07A BY: OLIVIA MCCrackEN



Know what's below.
 Call before you dig.

DESIGNED BY: <DESIGNER>
 CHECKED BY: <REVIEWER>
 DRAWN BY: <DRAWN>

ISSUE DATE: 08-16-2021	
DATE	REVISION COMMENTS
04-12-2022	PER PWSD COMMENTS
07-21-2022	PER PWSD COMMENTS

HKS HARRIS KOCHER SMITH
 1120 Lincoln Street, Suite 1000
 Denver, Colorado 80203
 P: 303.623.6300 F: 303.623.6311
 HarrisKocherSmith.com

PLAZA STREET PARTNERS

LINCOLN & DRANSFELDT
 WATER DETAILS

PROJECT #: 200829
 SHEET NUMBER

12

12 OF 13

NO CHANGES ARE TO BE MADE TO THIS DRAWING WITHOUT WRITTEN PERMISSION OF HARRIS KOCHER SMITH.

INSPECTION POLICY:

- ALL SERVICE INSPECTIONS MUST BE SCHEDULED AT LEAST 24 HOURS IN ADVANCE OF THE REQUESTED INSPECTION.
- SERVICE INSPECTIONS WILL OCCUR BETWEEN 1:00 P.M. AND 3:00 P.M. SPECIFIC INSPECTION TIMES ARE NOT AVAILABLE.
- IF THE CONTRACTOR IS NOT READY FOR INSPECTION WHEN THE INSPECTOR ARRIVES AT THE SITE OR SERVICE FAILS, A RE-INSPECTION WILL HAVE TO BE SCHEDULED IN ACCORDANCE WITH NOTES 1 AND 2 ABOVE AND A RE-INSPECTION FEE CHARGED.
- SHOULD THE SERVICE LINES BE DAMAGED BY LATER CONSTRUCTION, AN INSPECTION OF THE REPAIR WILL BE REQUIRED IN ACCORDANCE WITH NOTES 1 AND 2 ABOVE.
- THE CONTRACTOR SHALL LEAVE ALL PIPE AND FITTINGS EXPOSED FOR THE INSPECTOR TO OBSERVE. INSPECTORS WILL NOT ENTER ANY EXCAVATIONS TO CHECK MATERIALS. THE TOP LAYER OF BEDDING CAN BE ADDED AFTER THE INSPECTION HAS BEEN COMPLETED.
- ALL EXCAVATIONS SHALL BE IN ACCORDANCE WITH OSHA STANDARDS.
- LOTS WITHOUT BUILDING ADDRESSES BEFORE DISTRICT INSPECTION OR METER SET WILL FAIL AUTOMATICALLY.
- CONTRACTOR MUST BE PRESENT AT TIME OF INSPECTION, UNLESS COORDINATED WITH DISTRICT INSPECTOR.

INSTALLATION NOTES:

WATER

- ACCEPTABLE PIPE MATERIALS SHALL BE K-COPPER TUBING. (3/4" MIN.)
- APPROVED BEDDING TO BE SQUEEGEE.
- ONLY ONE COUPLING WILL BE ALLOWED BETWEEN THE STUB-IN AND BUILDING. COMPRESSION COUPLINGS WILL NOT BE ALLOWED ON NEW CONSTRUCTION. SILVER SOLDERED JOINTS MUST BE USED ON SERVICES LARGER THAN 3/4". SILVER SOLDERED JOINTS MUST BE INSPECTED BY PWSO PRIOR TO BURIAL. FLARED COUPLINGS WILL BE ALLOWED ON ALL SERVICES 3/4" AND SMALLER.
- A WATER SERVICE WHICH CROSSES A SEWER SERVICE CAN DO SO ONLY AT A 45-90° ANGLE. WATER SERVICES SHALL BE LOCATED A MINIMUM OF 18" ABOVE SEWER SERVICE.
- WATER SERVICE FOUNDATION PENETRATIONS SHALL BE WATERPROOFED USING MASTIC OR OTHER APPROVED METHOD. CRAWL SPACE REQUIRES CONTINUOUS COPPER WITH A 1" BURY.
- CURB STOP MUST BE PLUMB AND CENTERED OVER THE NUT. IT SHOULD BE STRAPPED TO THE METER PIT (RESIDENTIAL INSTALLATIONS) OR CENTERED OVER THE EASEMENT LINE (COMMERCIAL INSTALLATIONS). THE ASSEMBLY MUST BE AT OR SLIGHTLY ABOVE FINISHED GRADE.
- Moved curb boxes must be inspected by PWSO prior to burial.
- Waterline must be attached to a support board that is mounted to the wall.
- NO VOIDS ALLOWED UNDER WATERLINES FROM STOP BOX TO FOUNDATION.
- CURBSTOP BOXES AND METER PITS CANNOT BE IN DRIVEWAYS.
- ONLY 3/4" (JUMPER) PIPES (RESIDENCES) ARE ALLOWED. (JUMPER) PIPES WILL BE REMOVED PRIOR TO METER SET DATE.
- ALL SERVICES WILL BE PERMANENTLY MARKED ON CURB FACE AS FOLLOWS:
"X" FOR SANITARY SEWER SERVICE
"V" FOR WATER SERVICES
- NO SPLICES OR FLARED COUPLINGS ALLOWED ON SERVICES LARGER THAN 3/4". SILVER SOLDERED JOINTS MUST BE USED IN MOVING STOPBOXES ON SERVICES LARGER THAN 3/4". SILVER SOLDERED JOINTS MUST BE INSPECTED BY PWSO PRIOR TO BURIAL. FLARED COUPLINGS WILL BE ALLOWED ON ALL SERVICES 3/4" AND SMALLER.

PARKER WATER & SANITATION DISTRICT
DISTRICT POLICIES & INSTALLATION NOTES FOR WATER SERVICES

SCALE: NONE	DATE: 2/96
APPROVED: PVR	1/16 10/16
DIRECTOR OF ENGINEERING	

2016 REVISION SHEET W1.1

TYPICAL PLAN

NOTES:

- SEE "TYPICAL STREET CROSS SECTION - TYPICAL STREET Q PROFILE" DRAWING.
- ALL FIRE HYDRANTS TO BE LOCATED AT POINTS OTHER THAN CORNER INTERSECTIONS SHALL BE INSTALLED AT A LOT LINE EXTENDED.

PARKER WATER & SANITATION DISTRICT
WATER DISTRIBUTION SYSTEM
TYPICAL PLAN

SCALE: NONE	DATE: 2/96
APPROVED: PVR	1/16 10/16
DIRECTOR OF ENGINEERING	

2016 REVISION SHEET W2.1

TYPICAL STREET CROSS SECTION

TYPICAL STREET Q PROFILE

PARKER WATER & SANITATION DISTRICT
TYPICAL STREET CROSS SECTION
TYPICAL STREET Q PROFILE

SCALE: NONE	DATE: 2/96
APPROVED: PVR	1/16 10/16
DIRECTOR OF ENGINEERING	

2016 REVISION SHEET W2.2

TYPICAL PLAN FOR CURVED STREETS

NOTE: WATER AND SEWER MAY NEVER BE CLOSER THAN 10' HORIZONTALLY AND MUST MAINTAIN A MINIMUM OF 5' FROM THE LIP OF PAN ON THE GUTTER.

PARKER WATER & SANITATION DISTRICT
WATER DISTRIBUTION SYSTEM
TYPICAL PLAN FOR CURVED STREETS

SCALE: NONE	DATE: 2/96
APPROVED: PVR	1/16 10/16
DIRECTOR OF ENGINEERING	

2016 REVISION SHEET W2.3

PREFERRED FIRE HYDRANT LOCATION

FIRE HYDRANT DETAILS

NOTES:

- ALTERNATE TO THE ABOVE: FASTEN M.J. VALVE DIRECTLY TO A M.J. ANCHOR TEE (GLSS) CALLED SWIVEL TEE.
- NO HORIZONTAL OR VERTICAL BENDS ARE ALLOWED IN FIRE HYDRANT BRANCH.
- NO PORTION OF FIRE HYDRANT MAY
- FIRE HYDRANT EXTENSIONS MAY NOT BE IN THE SIDEWALK AREA.

PARKER WATER & SANITATION DISTRICT
FIRE HYDRANTS
LOCATION & INSTALLATION

SCALE: NONE	DATE: 2/96
APPROVED: PVR	4/01 01/02 12/07 1/16
DIRECTOR OF ENGINEERING	

2016 REVISION SHEET W2.5

PIPE LOCATION SYSTEM

LOCATOR WIRE DETAILS

NOTES:

- FOR USE ON ALL DUCTILE IRON AND PVC WATER MAINS.
- LOCATOR STATION POSITION MAY BE ADJUSTED AT THE DISCRETION OF THE DISTRICT ENGINEER.
- A CONTINUITY TEST WILL BE REQUIRED PRIOR TO PROBABLY ACCEPTANCE.

PARKER WATER & SANITATION DISTRICT
LOCATOR WIRE DETAILS

SCALE: NONE	DATE: 2/96
APPROVED: PVR	4/01 01/02 01/16 10/16
DIRECTOR OF ENGINEERING	

2016 REVISION SHEET W2.6

FILE PATH: K:\200829\ENGINEERING\UTILITIES\WATER&S - DETAILS\DWG - LAYOUT-12 SEWER DETAILS
NO SCALE: THU 07/21/22 11:19:22A BY: OLIVIA MCCACKEN
PLOTTED: THU 07/21/22 11:19:22A BY: OLIVIA MCCACKEN



Know what's below.
Call before you dig.

DESIGNED BY: -DESIGNER-
CHECKED BY: -REVIEWER-
DRAWN BY: -DRAWN-

ISSUE DATE: 08-16-2021	REVISION COMMENTS
04-12-2022	PER PWSO COMMENTS
07-21-2022	PER PWSO COMMENTS

HKS HARRIS KOCHER SMITH

1120 Lincoln Street, Suite 1000
Denver, Colorado 80203
P: 303.623.6300 F: 303.623.6311
HarrisKocherSmith.com

PLAZA STREET PARTNERS

LINCOLN & DRANSFELDT
SEWER DETAILS

PROJECT #: 200829
SHEET NUMBER

13

13 OF 13