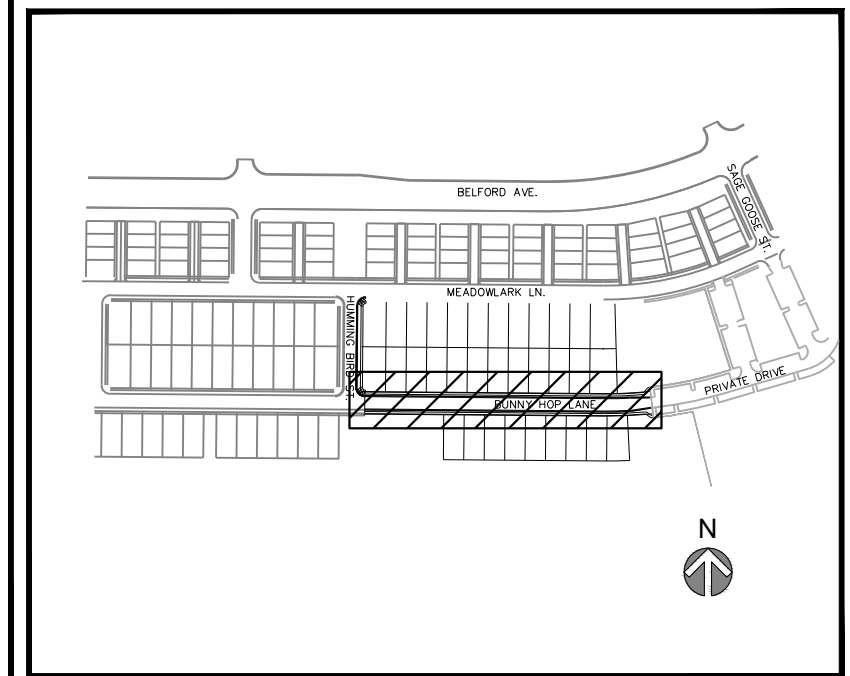
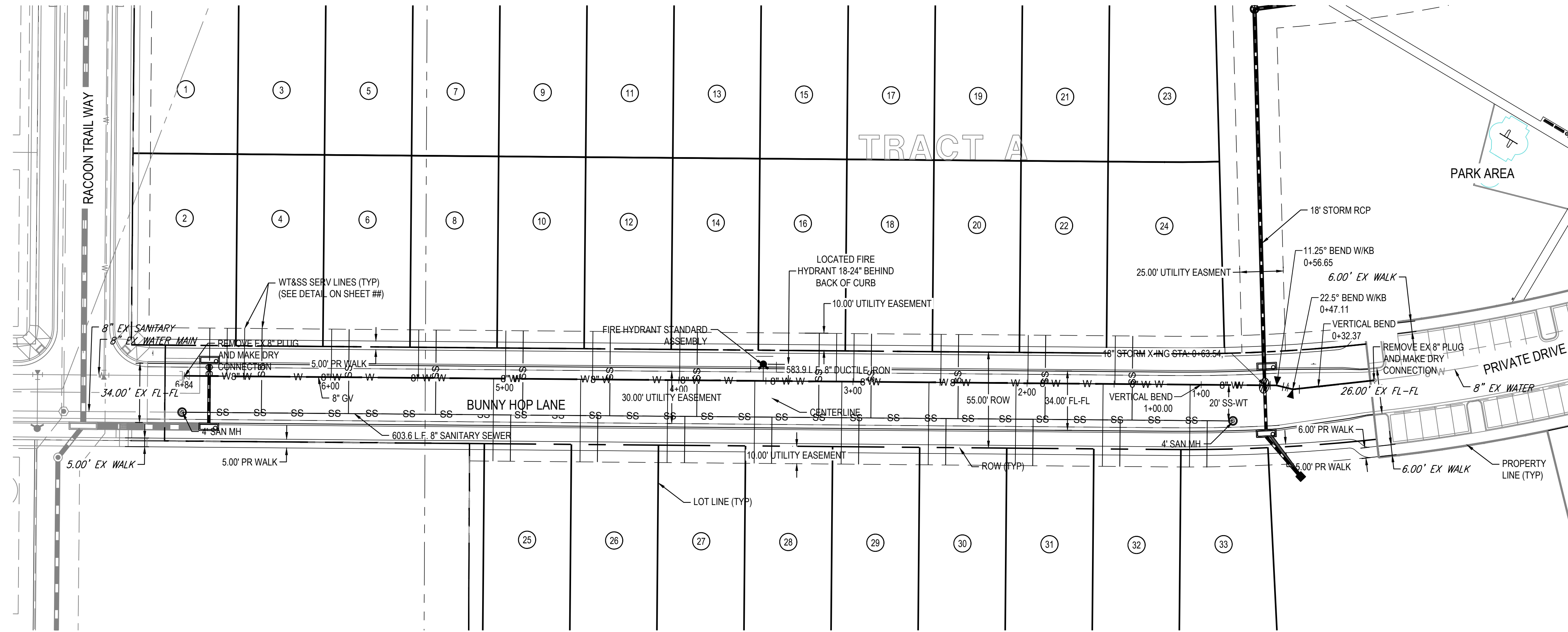
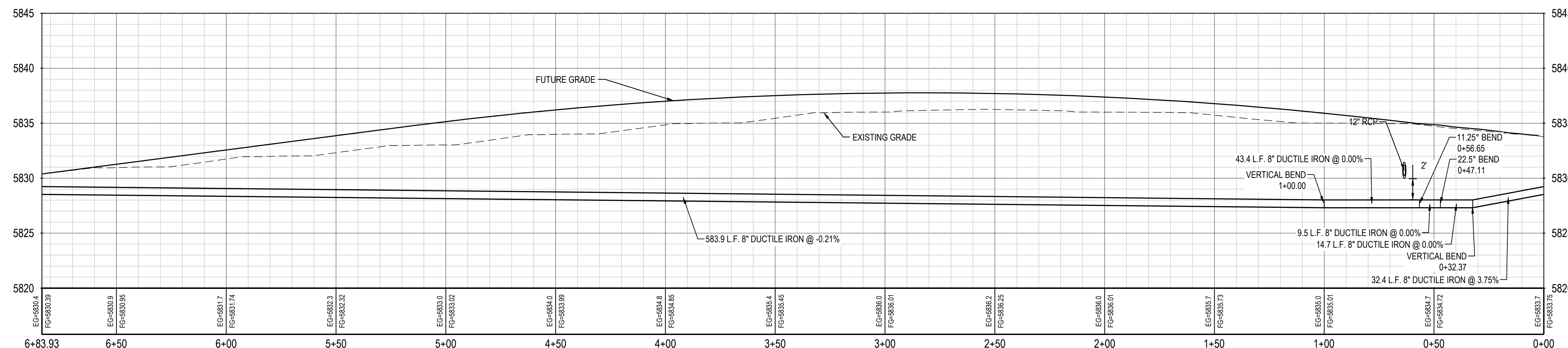


THE NEW OR CHANGED EXISTING UTILITIES AND FACILITIES ARE AN INSTRUMENT OF SERVICE PROVIDED BY MERRICK AND COMPANY, FOR A FUTURE PROJECT. REUSE OR MODIFICATION OF ANY UTILITIES OR FACILITIES IS NOT INTENDED OR REPRESENTED TO BE SUITABLE FOR REUSE IN WHOLE OR IN PART OR FOR EXTENSION OF THE PROJECT OR ON ANY OTHER PROJECT. MERRICK AND COMPANY SHALL BE AT THE SOLE RISK FOR THE QUALITY OF THE UTILITIES AND FACILITIES SHOWN ON THIS SHEET.



REV	REVISION DESCRIPTION	DATE	CHKD	APPR

8" WATER PROFILE



FIRE CODE REVIEW BLOCK

FIRE CODE REVIEW BLOCK
 All fire hydrants shall be installed according to water utility standards. The number and locations of the fire hydrants as shown on the Overall Utility Plan are correct as specified by the Town of Parker, Community Development Department.

Fire Code Official or Designated Representative _____ Date _____

(NOTE - Underground Fire Line (UFL) submittal documents must meet the requirements of NFPA 24 when submitting for review.)

THE TOWN OF PARKER REVIEW CONSTITUTES GENERAL COMPLIANCE WITH THE TOWN'S STANDARDS AND APPROVED VARIANCES. SUBJECT TO THESE PLANS BEING STAMPED, SIGNED, AND DATED BY THE PROFESSIONAL ENGINEER OF RECORD. REVIEW BY THE TOWN DOES NOT CONSTITUTE APPROVAL OF THE PLAN DESIGN OR ACCURACY AND CORRECTNESS OF ENGINEERING CALCULATIONS. ERRORS IN THE DESIGN OR CALCULATIONS REMAIN THE RESPONSIBILITY OF THE REGISTERED PROFESSIONAL ENGINEER WHOSE STAMP AND SIGNATURE ARE AFFIXED TO THIS DOCUMENT.

THIS REVIEW DOES NOT CONSTITUTE APPROVAL OF ANY PRIVATE ON-SITE IMPROVEMENTS WHICH MAY BE SHOWN. CONSTRUCTION CANNOT COMMENCE UNTIL ALL REQUIRED DRAINAGE/TRAFFIC REPORT(S), FINAL DEVELOPMENT PLAN(S), SPECIAL APPROVAL(S), GRADING PERMIT, AND/OR OTHER PERMITS ARE COMPLETE, APPROVED AND ON FILE WITH THE TOWN OF PARKER.

TOWN OF PARKER, PUBLIC WORKS DIRECTOR _____ DATE _____

TOWN OF PARKER, PUBLIC WORKS MANAGER - STORMWATER _____ DATE _____

TOWN OF PARKER, PUBLIC WORKS MANAGER - TRANSPORTATION _____ DATE _____

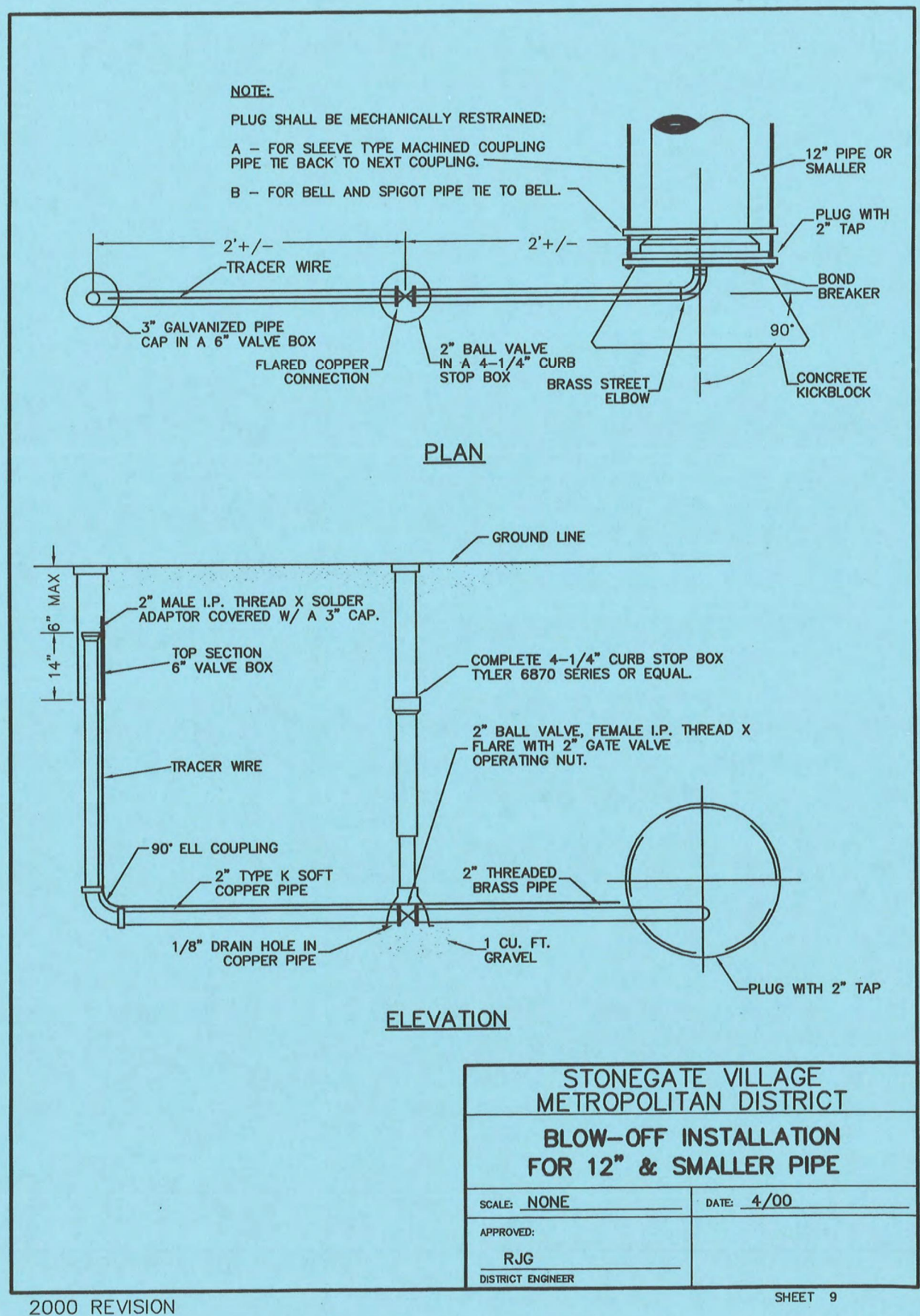
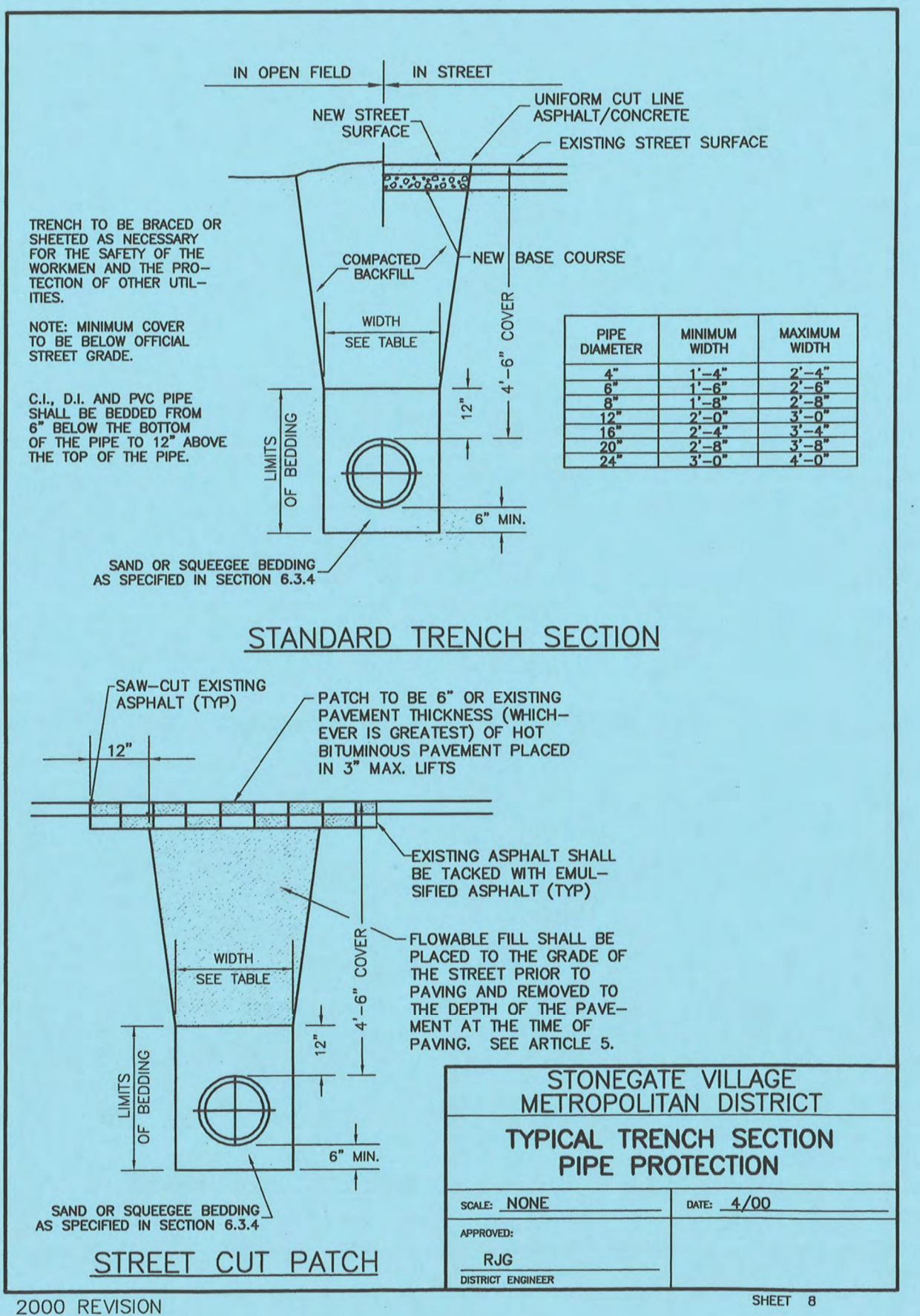
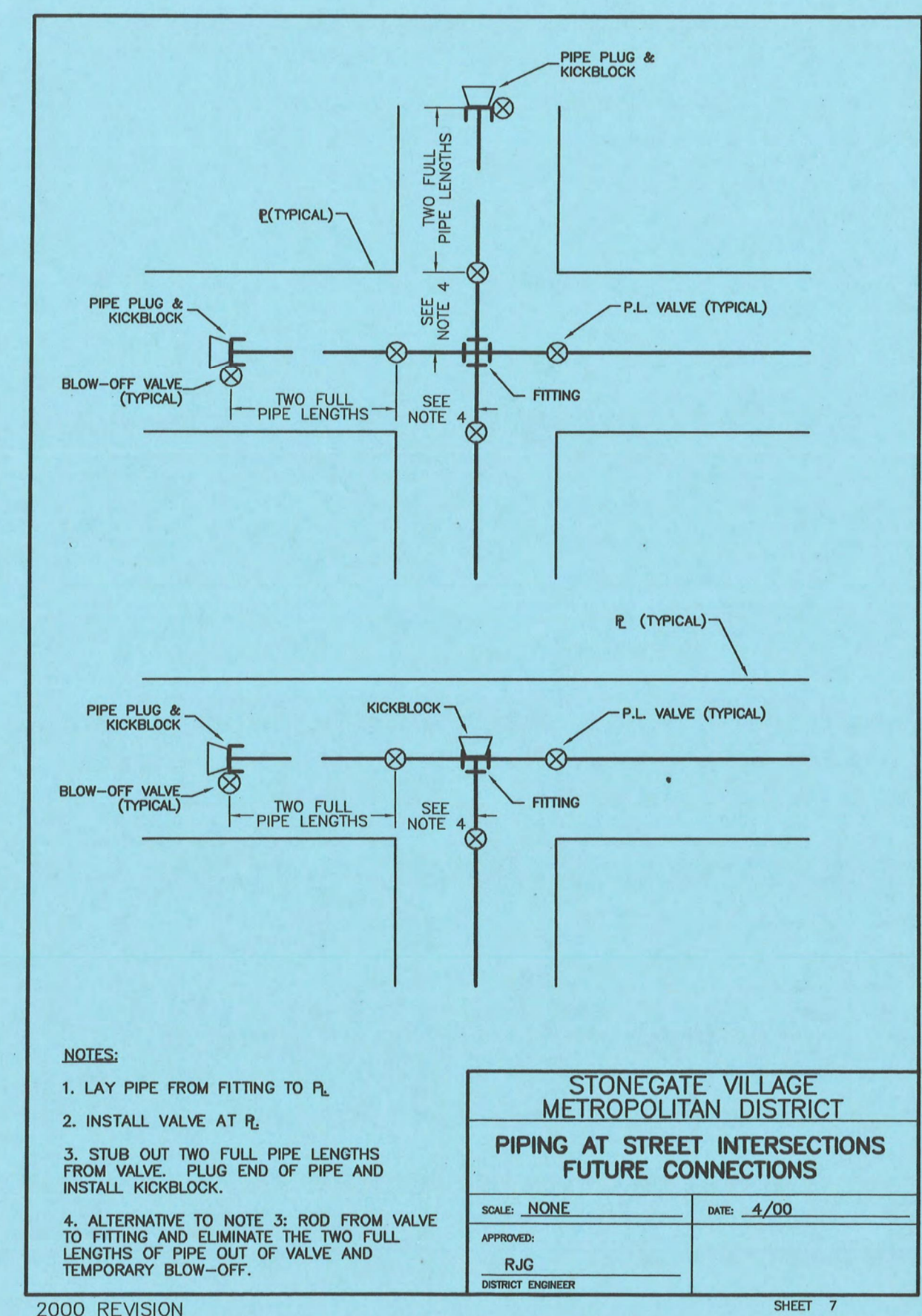
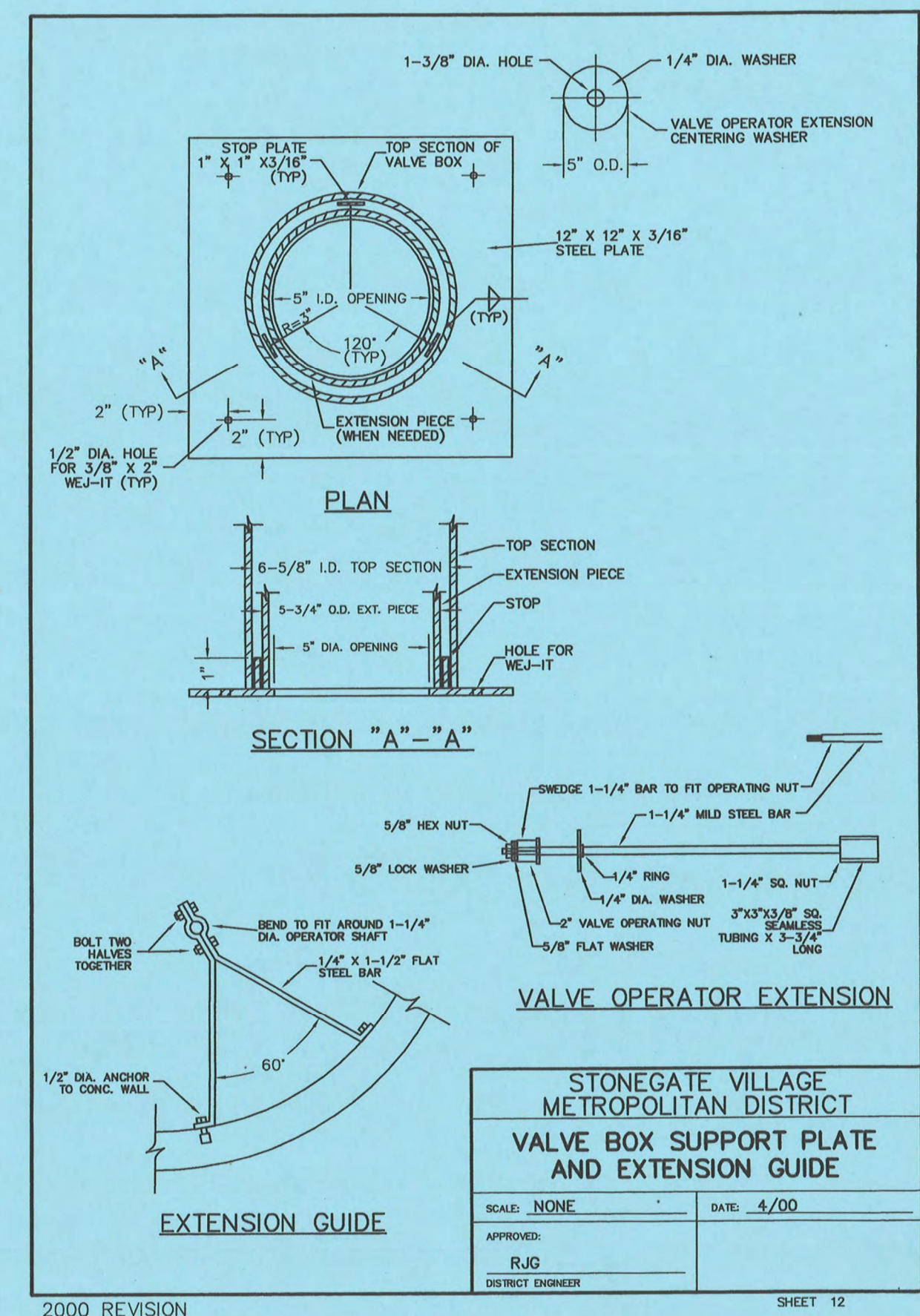
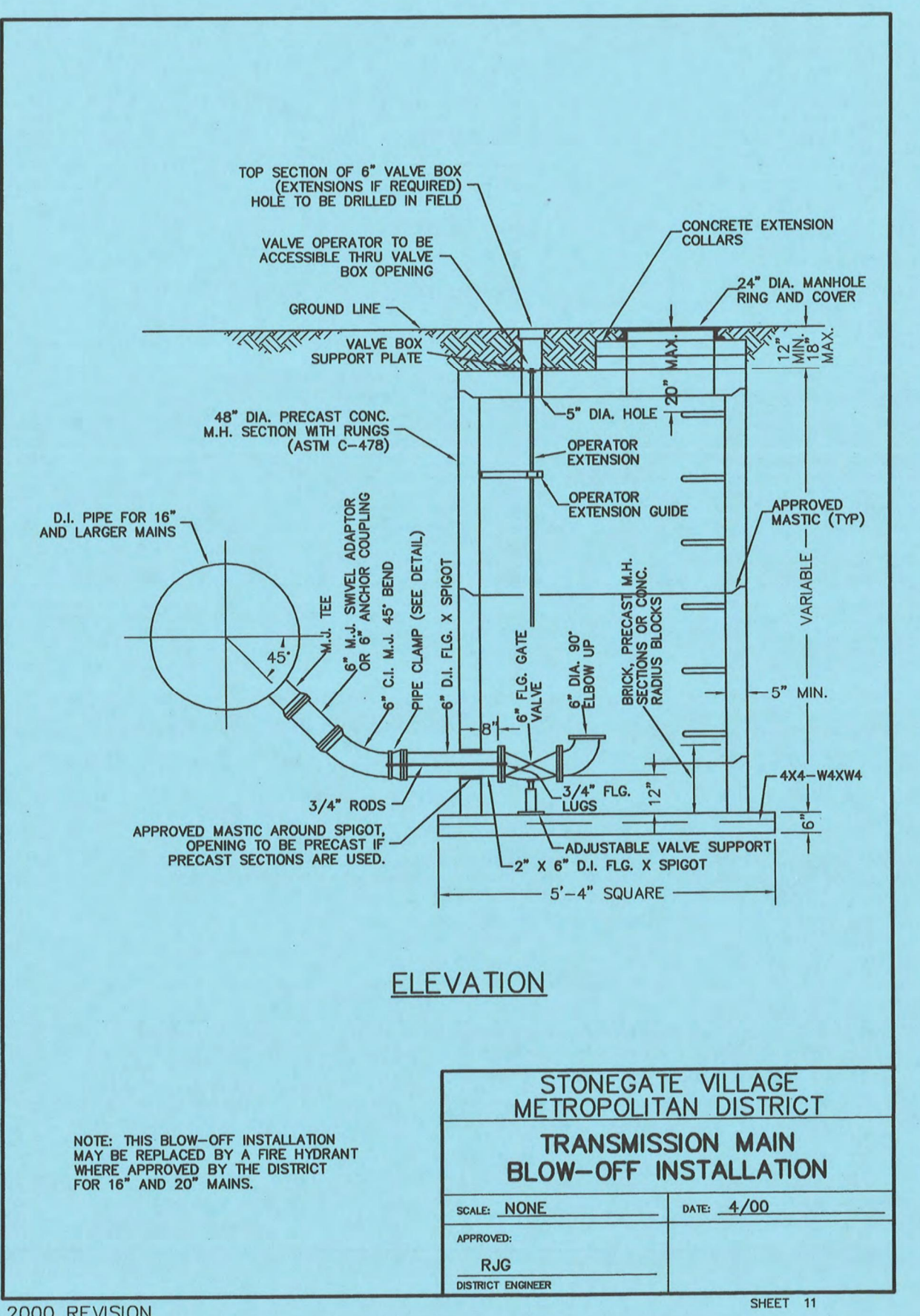
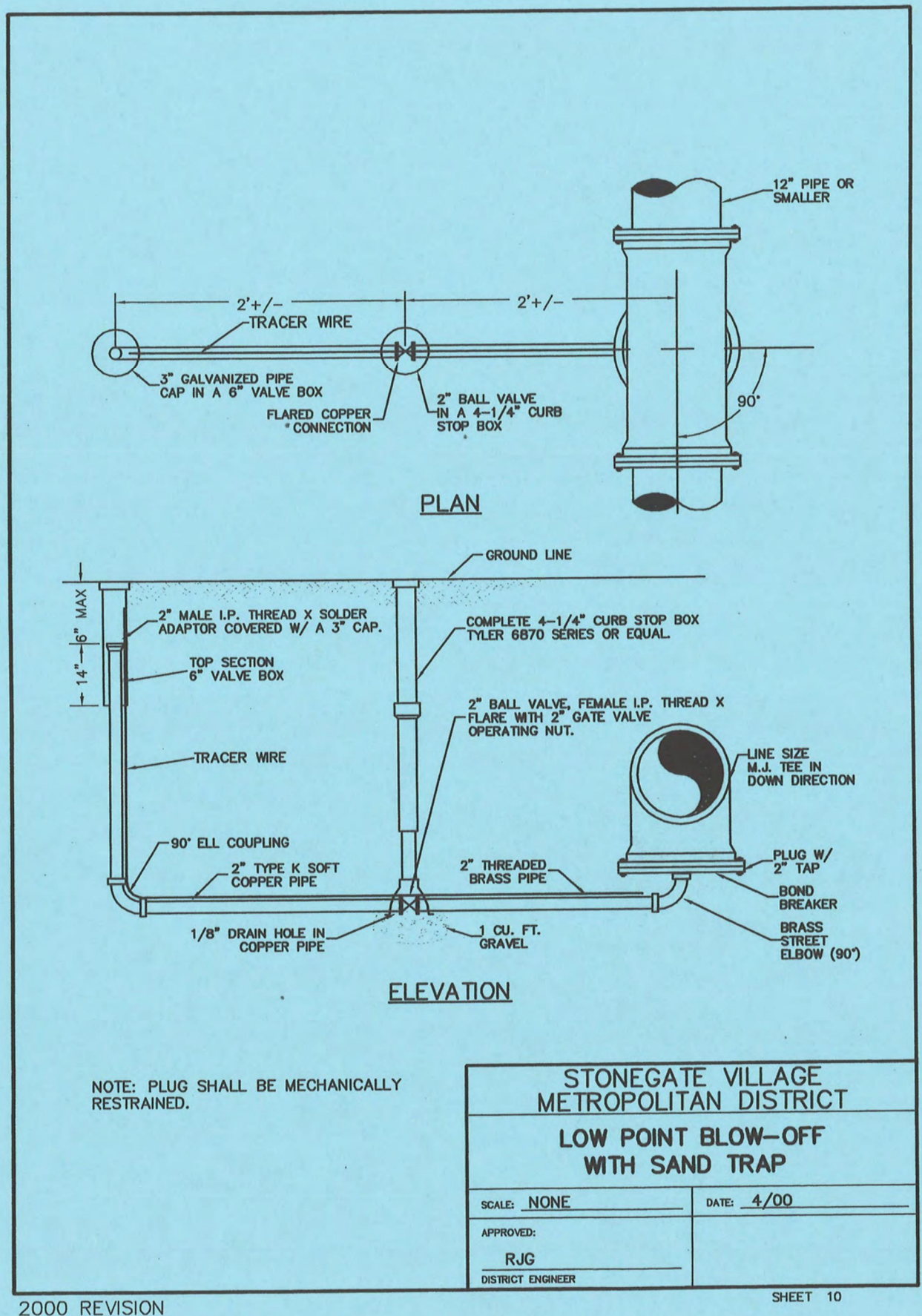
COMPARK VILLAGE SOUTH
WATER AND SANITARY
PLANS
WATER-P&P

FILE NUMBER: 65120560
 DATE: 9/10/2021
 SHEET: 04



THE USE OF THESE ELECTRICAL CONNECTIONS IS AN INSTRUMENT OF SERVICE PROVIDED BY MERRICK AND COMPANY, INC. FOR A SPECIFIC PROJECT. IT IS NOT INTENDED OR REPRESENTED TO BE SUITABLE FOR REUSE IN WHOLE OR IN PART OR AN EXTENSION OF THE PROJECT OR ON ANY OTHER PROJECT. REUSE OR MODIFICATION OF ANY INFORMATION NOT A PHYSICAL INSTRUMENT WITHOUT THE WRITTEN CONSENT OF MERRICK AND COMPANY SHALL BE AT THE USER'S RISK. THE USER ASSUMES ALL LIABILITY TO OBTAIN NECESSARY PERMITS AND APPROVALS.

File Location: D:\DEN\Projects\0959-c00 Compark South\CAD\CDS\SF-WATER\0950-WATER DETAILS-SF-W.dwg Plot Date: 10/8/2021 12:55 PM Last Saved By: TVANGORDON



Know what's below.
Call before you dig.

REV	REVISION DESCRIPTION	DATE	CHKD	APPD

COMPARK SOUTH
WATER AND SANITARY PLANS
WATER DETAILS

ISSUED FOR REVIEW



Know what's below.
Call before you dig.

PLAN

ELEVATION

NOTES

- PIPE JOINT SHALL BE THREADED OR SOLDERED WITH SILVER SOLDER.
- INSTALLATION MUST ALLOW ACCESS FOR MAINTENANCE AND BE PROTECTED FROM FREEZING.
- SEE SECTION 10.9, WATER SYSTEM SPECIFICATIONS FOR GENERAL METER NOTES.
- COMPANION FLANGES SHALL BE BRASS.
- METER SUPPORT SHALL BE EITHER CONCRETE OR ADA STEEL PIPE (SEE SHEET NO. 54)
- THIS DETAIL TO BE USED ONLY WITH EXPRESS PERMISSION OF THE DISTRICT ENGINEER.

STONEGATE VILLAGE METROPOLITAN DISTRICT
INSIDE SETTING FOR 1/2" & 2" METER WITH CHECK VALVE

SCALE: NONE DATE: 4/00

APPROVED: R/JG DISTRICT ENGINEER

2000 REVISION SHEET 51

FLOOR SLAB

ROOF SLAB

PLAN OF PIPING

SECTION A-A

SECTION B-B

NOTE:
THE ROOF SLAB MAY BE CAST IN SECTIONS FOR FUTURE ACCESS. THE INDIVIDUAL SECTION WEIGHT MUST NOT EXCEED 7,500 POUNDS ACCORDING TO MS-27.

NOTE:
SEE SHEET NO. 54 FOR DIMENSIONS CORRESPONDING TO THIS DRAWING.

STONEGATE VILLAGE METROPOLITAN DISTRICT
COMPOUND METER WITH CHECK VALVE AND BYPASS

SCALE: NONE DATE: 4/00

APPROVED: R/JG DISTRICT ENGINEER

2000 REVISION SHEET 54

SECTION A-A

ELEVATION

WALL CLAMP
4 REQUIRED

STONEGATE VILLAGE METROPOLITAN DISTRICT
WALL AND BODY CLAMPS FOR 3" METERS

SCALE: NONE DATE: 4/00

APPROVED: R/JG DISTRICT ENGINEER

2000 REVISION SHEET 52

METER SIZE	SECTION	REINFORCEMENT
2"	WALL	3#4 @ 12" O.C.
	ROOF	3#4 @ 12" O.C.
4"	WALL	3#4 @ 12" O.C.
	ROOF	3#4 @ 12" O.C.
6"	WALL	3#4 @ 12" O.C.
	ROOF	3#4 @ 12" O.C.
8"	WALL	3#4 @ 12" O.C.
	ROOF	3#4 @ 12" O.C.
10"	WALL	3#4 @ 12" O.C.
	ROOF	3#4 @ 12" O.C.

STONEGATE VILLAGE METROPOLITAN DISTRICT
COMPOUND METER WITH CHECK VALVE AND BYPASS

SCALE: NONE DATE: 4/00

APPROVED: R/JG DISTRICT ENGINEER

2000 REVISION SHEET 55

EXTERIOR ELEVATION

WALL PLATE

SECTION A-A

STONEGATE VILLAGE METROPOLITAN DISTRICT
WALL CLAMPS FOR 4", 6", 8" & 10" METERS

PIPE SIZE	RODS	WALL PIPE SLEEVES	"A"	"B"
4"	2 5/8"Ø	3/4" X 9"	3 1/2"	1 7/16"
6"	2 5/8"Ø	3/4" X 9"	4 3/8"	1 13/16"
8"	2 3/4"Ø	1" X 9"	5 7/16"	2 1/4"
10"	2 7/8"Ø	1 1/2" X 9"	5 7/8"	3 3/8"

SCALE: NONE DATE: 4/00

APPROVED: R/JG DISTRICT ENGINEER

2000 REVISION SHEET 53

FLOOR SLAB

ROOF SLAB

PLAN OF PIPING

SECTION A-A

SECTION B-B

NOTE:
THE ROOF SLAB MAY BE CAST IN SECTIONS AS LONG AS THE INDIVIDUAL SECTION WEIGHT DOES NOT EXCEED 7,500 POUNDS ACCORDING TO MS-27.

STONEGATE VILLAGE METROPOLITAN DISTRICT
F.M. - C.T. METER WITH BYPASS

SCALE: NONE DATE: 4/00

APPROVED: R/JG DISTRICT ENGINEER

2000 REVISION SHEET 56

REV	REVISION DESCRIPTION	DATE	BY

COMPARK SOUTH
WATER AND SANITARY PLANS
WATER DETAILS

ISSUED FOR REVIEW

