

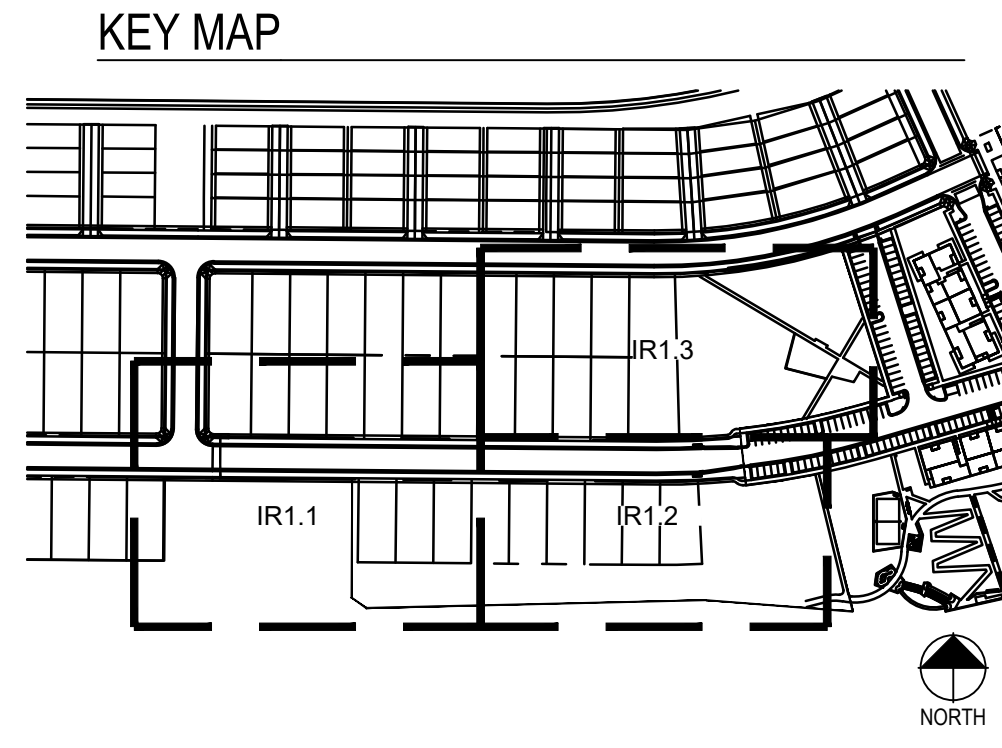
COMPARK VILLAGE SOUTH PRELIMINARY PLAN

A PARCEL OF LAND LOCATED IN A PORTION OF THE SE OF SECTION 6, TOWNSHIP 6 SOUTH,
RANGE 66 WEST OF THE SIXTH PRINCIPAL MERIDIAN,
TOWN OF PARKER, COUNTY OF DOUGLAS, STATE OF COLORADO
7.69 ACRES, 33 RESIDENTIAL LOTS

PRELIMINARY NOT FOR BIDDING OR CONSTRUCTION

IRRIGATION SCHEDULE

SYMBOL	MANUFACTURER/MODEL/DESCRIPTION	PSI	SYMBOL	MANUFACTURER/MODEL/DESCRIPTION
	HUNTER PROS-06-PRS30-CV 5' STRIP SPRAY TURF SPRAY, 30 PSI REGULATED 6.0" POP-UP, WITH FACTORY INSTALLED DRAIN CHECK VALVE. CO-MOLDED WIPER SEAL WITH UV RESISTANT MATERIAL.	30		DRIP VALVE ASSEMBLY HUNTER ICZ-101-25, DRIP CONTROL ZONE KIT. 1" ICV GLOBE VALVE WITH 1" HY100 FILTER SYSTEM. PRESSURE REGULATION: 25PSI. FLOW RANGE: 2 GPM TO 20 GPM. 150 MESH STAINLESS STEEL SCREEN.
	HUNTER PROS-06-PRS30-CV 8" RADIUS TURF SPRAY, 30 PSI REGULATED 6.0" POP-UP, WITH FACTORY INSTALLED DRAIN CHECK VALVE. CO-MOLDED WIPER SEAL WITH UV RESISTANT MATERIAL.	30		DRIP FLUSH VALVE 3/4" PVC BALL VALVE
	HUNTER PROS-06-PRS30-CV 10" RADIUS TURF SPRAY, 30 PSI REGULATED 6.0" POP-UP, WITH FACTORY INSTALLED DRAIN CHECK VALVE. CO-MOLDED WIPER SEAL WITH UV RESISTANT MATERIAL.	30	SYMBOL	MANUFACTURER/MODEL/DESCRIPTION
	HUNTER PROS-06-PRS30-CV 12" RADIUS TURF SPRAY, 30 PSI REGULATED 6.0" POP-UP, WITH FACTORY INSTALLED DRAIN CHECK VALVE. CO-MOLDED WIPER SEAL WITH UV RESISTANT MATERIAL.	30		REMOTE CONTROL VALVE ASSEMBLY HUNTER ICV-G-FS: 1", 1-1/2", 2", AND 3" PLASTIC ELECTRIC REMOTE CONTROL VALVES. GLOBE CONFIGURATION, WITH NPT THREADED INLET/OUTLET, FOR COMMERCIAL/MUNICIPAL USE. WITH FILTER SENTRY.
	HUNTER PROS-06-PRS30-CV 15" RADIUS TURF SPRAY, 30 PSI REGULATED 6.0" POP-UP, WITH FACTORY INSTALLED DRAIN CHECK VALVE. CO-MOLDED WIPER SEAL WITH UV RESISTANT MATERIAL.	30		QUICK COUPLER VALVE ASSEMBLY HUNTER HO-SRC: VALVE WITH YELLOW RUBBER COVER, RED BRASS AND STAINLESS STEEL, WITH 1" NPT INLET, 1-PIECE BODY.
	HUNTER PROS-06-PRS30-CV 17" RADIUS TURF SPRAY, 30 PSI REGULATED 6.0" POP-UP, WITH FACTORY INSTALLED DRAIN CHECK VALVE. CO-MOLDED WIPER SEAL WITH UV RESISTANT MATERIAL.	30		ISOLATION GATE VALVE ASSEMBLY MATCO-NORCA 514TX: 1/2"-4" BRASS GATE VALVE, FULL PORT, WITH SOLID WEDGE. IPS. CROSS HANDLE. SAME SIZE AS MAINLINE PIPE.
	HUNTER MP CORNER PROS-06-PRS40-CV TURF ROTATOR, 6" POP-UP WITH FACTORY INSTALLED CHECK VALVE, PRESSURE REGULATED TO 40 PSI, MP ROTATOR NOZZLE ON PRS40 BODY. T=TURQUOISE ADJ ARC 45-105.	40		MASTER VALVE ASSEMBLY-PRESSURE REGULATING BUCKNER-SUPERIOR 3100-PRV, NORMALLY OPEN BRASS MASTER VALVE THAT PROVIDES DIRTY WATER PROTECTION. SIZE TO MATCH POC. REGULATE PRESSURE
	HUNTER MP1000 PROS-06-PRS40-CV TURF ROTATOR, 6" POP-UP WITH CHECK VALVE, PRESSURE REGULATED TO 40 PSI, MP ROTATOR NOZZLE ON PRS40 BODY. M=MAROON ADJ ARC 90 TO 210, L=LIGHT BLUE 210 TO 270 ARC, O=OLIVE 360 ARC.	40		REDUCED PRESSURE BACKFLOW PREVENTER FEBCO 825YA: SIZED TO MATCH POC METER SIZE. REDUCED PRESSURE BACKFLOW PREVENTER IN STRONG BOX SBBC-30AL: LOW PROFILE BACKFLOW ENCLOSURE, WITH MARINE GRADE ALUMINUM. 30" L, 30" H, 16.25" W (76.2CM L, 76.2CM H, 41.275CM W).
	HUNTER MP2000 PROS-06-PRS40-CV TURF ROTATOR, 6" POP-UP WITH FACTORY INSTALLED CHECK VALVE, PRESSURE REGULATED TO 40 PSI, MP ROTATOR NOZZLE ON PRS40 BODY. K=BLACK ADJ ARC 90-210, G=GREEN ADJ ARC 210-270, R=RED 360 ARC.	40		PEDESTAL MOUNT 2-WIRE CONTROLLER HUNTER PED-SS-A2C-75D-SS-75-STATION DECODER CONTROLLER IN AN OUTDOOR STAINLESS STEEL PEDESTAL. INSTALL WIRELESS RAIN SENSOR AND SOLAR SYNC
	HUNTER MP3000 PROS-06-PRS40-CV TURF ROTATOR, 6" POP-UP WITH FACTORY INSTALLED CHECK VALVE, PRESSURE REGULATED TO 40 PSI, MP ROTATOR NOZZLE ON PRS40 BODY. B=BLUE ADJ ARC 90-210, Y=YELLOW ADJ ARC 210-270, A=GRAY 360 ARC.	40		CREATIVE SENSOR TECHNOLOGY FSI-T 1.5" PVC TEE TYPE FLOW SENSOR W/SOCKET ENDS, CUSTOM MOUNTING TEE AND ULTRA-LIGHTWEIGHT IMPELLER ENHANCES LOW FLOW MEASUREMENT. 2 WIRE DIGITAL OUTPUT. FLOW RANGE: .86-52 GPM.
	HUNTER MP3500 PROS-06-PRS40-CV TURF ROTATOR, 6" POP-UP WITH FACTORY INSTALLED CHECK VALVE, PRESSURE REGULATED TO 40 PSI, MP ROTATOR NOZZLE ON PRS40 BODY. LB=LIGHT BROWN ADJUSTABLE ARC, 90-210.	40		IRRIGATION LATERAL LINE: PVC CLASS 200 SDR 21 PVC CLASS 200 IRRIGATION PIPE. ONLY LATERAL TRANSITION PIPE SIZES 1" 1/4" AND ABOVE ARE INDICATED ON THE PLAN, WITH ALL OTHERS BEING 1" IN SIZE.
	HUNTER MP800SR PROS-06-PRS40-CV TURF ROTATOR, 6" POP-UP WITH CHECK VALVE, PRESSURE REGULATED TO 40 PSI, MP ROTATOR NOZZLE ON PRS40 BODY. ADJ=ORANGE AND GRAY (ARC 90-210), 360=LIME GREEN AND GRAY (ARC 360)	40		PLANTING BED DRIP IRRIGATION LATERAL LINE: 3/4-INCH BLANK UV RADIATION RESISTANT POLYETHYLENE PIPE TO SINGLE OUTLET EMITTERS PER ADJACENT EMITTER CHART.
	HUNTER I-20-06-SS TURF ROTOR, 6" POP-UP, ADJUSTABLE AND FULL CIRCLE. STAINLESS STEEL RISER. DRAIN CHECK VALVE. STANDARD NOZZLE. I-20 ROTORS IN NATIVE SEED AREAS SHALL BE PLASTIC RISERS	45		NATIVE PLANTING DRIP IRRIGATION LATERAL LINE: 3/4-INCH BLANK UV RADIATION RESISTANT POLYETHYLENE PIPE TO TREE RINGS, NETAFIM INLINE DRIP TUBING MODEL TLCV6-18, AND SINGLE OUTLET EMITTERS FOR SHRUBS PER ADJACENT EMITTER CHART
	HUNTER I-20-06-SS TURF ROTOR, 6" POP-UP, ADJUSTABLE AND FULL CIRCLE. STAINLESS STEEL RISER. DRAIN CHECK VALVE. STANDARD NOZZLE. I-20 ROTORS IN NATIVE SEED AREAS SHALL BE PLASTIC RISERS	45		IRRIGATION MAINLINE: PVC CLASS 200 SDR 21 X-INCH UNLESS OTHERWISE NOTED.
	HUNTER I-20-06-SS TURF ROTOR, 6" POP-UP, ADJUSTABLE AND FULL CIRCLE. STAINLESS STEEL RISER. DRAIN CHECK VALVE. STANDARD NOZZLE. I-20 ROTORS IN NATIVE SEED AREAS SHALL BE PLASTIC RISERS	45		PIPE SLEEVE: PVC SCHEDULE 40 INSTALL, AS SHOWN ON DESIGN OR TWICE THE SIZE OF THE PIPE OR WIRE RUNNING THRU IT. NO TWO PIPES OR WIRE BUNDLES SHALL SHARE THE SAME SLEEVE.
	HUNTER I-25-06-SS TURF ROTOR, 6" POP-UP, ADJUSTABLE AND FULL CIRCLE. STAINLESS STEEL RISER. DRAIN CHECK VALVE. STANDARD NOZZLE.	50		Valve Collout # Valve Number # Valve Flow # Valve Size
	HUNTER I-25-06-SS TURF ROTOR, 6" POP-UP, ADJUSTABLE AND FULL CIRCLE. STAINLESS STEEL RISER. DRAIN CHECK VALVE. STANDARD NOZZLE.	50		
	HUNTER I-25-06-SS TURF ROTOR, 6" POP-UP, ADJUSTABLE AND FULL CIRCLE. STAINLESS STEEL RISER. DRAIN CHECK VALVE. STANDARD NOZZLE.	50		
	HUNTER I-25-06-SS TURF ROTOR, 6" POP-UP, ADJUSTABLE AND FULL CIRCLE. STAINLESS STEEL RISER. DRAIN CHECK VALVE. STANDARD NOZZLE.	50		
	HUNTER I-25-06-SS TURF ROTOR, 6" POP-UP, ADJUSTABLE AND FULL CIRCLE. STAINLESS STEEL RISER. DRAIN CHECK VALVE. STANDARD NOZZLE.	50		
	HUNTER I-25-06-SS TURF ROTOR, 6" POP-UP, ADJUSTABLE AND FULL CIRCLE. STAINLESS STEEL RISER. DRAIN CHECK VALVE. STANDARD NOZZLE.	50		



INSTALLATION GENERAL NOTES

- DESIGN ASSUMES A MINIMUM DYNAMIC PRESSURE AVAILABLE FOR THE IRRIGATION SYSTEM (PER CITY ENGINEER) OF 103 PSI, AT A MAXIMUM PEAK FLOW OF 40 GPM AT THE 1.5-INCH POINT-OF-CONNECTION (POC). VERIFY PRESSURE AND FLOW ON SITE PRIOR TO CONSTRUCTION. CONTACT GENERAL CONTRACTOR OR OWNER'S REPRESENTATIVE IMMEDIATELY IF FLOW OR PRESSURE ARE LOWER THAN LISTED ABOVE.
- ALL MAINLINES SHALL BE INSTALLED AT LEAST 5' FROM CENTER OF TREES, WHERE POSSIBLE. DESIGN IS SHOWN FOR CLARITY, THUS MAINLINE ROUTING IN FIELD MAY LOOK SLIGHTLY DIFFERENT THAN DEPICTED IN DRAWINGS.
- CONTRACTOR SHALL CREATE A LAMINATED CONTROLLER CHART ADHERED TO THE INSIDE OF THE CONTROLLER COVER OR A LAMINATED COLORED CONTROLLER MAP.
- CONTRACTOR SHALL BECOME FAMILIAR WITH THE SPECIFICATIONS AND INSTALLATION DETAILS FOR THIS AND RELATED WORK PRIOR TO CONSTRUCTION. FOR CLARIFICATION, CONTACT IRRIGATION DESIGNER PRIOR TO CONSTRUCTION.
- UPON FINAL ACCEPTANCE, CONTRACTOR SHALL TURN OVER REQUIRED ADJUSTMENT KEYS INCLUDING BUT NOT LIMITED TO CONTROLLER ENCLOSURE AND BACKFLOW ENCLOSURE KEY, LOCKING VALVE BOX KEYS, QUICK COUPLER KEYS, GATE VALVE KEY, SPRINKLER HEAD AND NOZZLE ADJUSTMENT KEYS.
- UPON FINAL ACCEPTANCE, CONTRACTOR SHALL TURN OVER SPARE PARTS PERTAINING TO INSTALLED SYSTEM: BACKFLOW WINTERIZATION INSERT, TWO OF EVERY HEAD AND NOZZLE (ROTOR NOZZLE TREE INCLUDED), ONE RCV DIAPHRAGM, ETC.
- COORDINATE UTILITY LOCATES OF UNDERGROUND UTILITIES PRIOR TO CONSTRUCTION ("811-CALL BEFORE YOU DIG").
- IF DISCREPANCIES ARE NOTED IN THE FIELD BETWEEN SITE CONDITIONS AND PROVIDED DESIGNS, CONTRACTOR SHALL NOTIFY OWNER'S REPRESENTATIVE OR GENERAL CONTRACTOR IMMEDIATELY. DO NOT PROCEED WITH THE INSTALLATION OF THE IRRIGATION SYSTEM IF SUCH DISCREPANCIES IN THE FIELD AFFECT THE PROVIDED DESIGN, DETAILS, OR SPECIFICATIONS.
- ALL IRRIGATION COMPONENTS (MAINLINE, WIRES, LATERAL LINES, ETC.) SHALL BE INSTALLED IN LANDSCAPED AREAS WHENEVER POSSIBLE, EVEN THOUGH SAID IRRIGATION COMPONENTS MAY BE SHOWN OUTSIDE PLANTING AREAS FOR CLARITY.
- AVOID CONFLICTS BETWEEN THE IRRIGATION SYSTEM, PLANTING MATERIALS, AND ARCHITECTURAL FEATURES WHENEVER POSSIBLE. COORDINATE POTENTIAL RELOCATION OF BOULDERS AND TREES IN TURF AREAS WITH LANDSCAPE ARCHITECT PRIOR TO SPRINKLER LAYOUT. IF LANDSCAPE MATERIAL CANNOT BE RELOCATED, ADDITIONAL SPRINKLERS MAY BE REQUIRED.
- WHERE POSSIBLE, MAINTAIN 3'-5' DISTANCE FROM CENTER OF TREE TO MAINLINE AND WIRES. VALVE BOXES SHALL BE AT LEAST 3' FROM TREE CENTER. MAINLINE ROUTING AND VALVE LOCATIONS ARE SHOWN FOR CLARITY AND MAY BE SHOWN WITHIN THE 3'-5' RANGE NOTED ABOVE.
- CROSS FITTINGS ARE NOT ALLOWED, ONLY STANDARD TEES AND ELBOWS.
- CONTRACTOR SHALL INSTALL NOZZLES PER PLAN, UNLESS IRRIGATED AREA CHANGED IN SIZE OR PLANT MATERIAL TYPE CHANGES. IF NOZZLE CHANGES ARE REQUIRED AND ARE SIGNIFICANT IN SIZE, CONTRACTOR SHALL CONTACT IRRIGATION DESIGNER FOR APPROVAL.
- CONTRACTOR SHALL FIELD LOCATE ANY EXISTING SLEEVES ON SITE PRIOR TO CONSTRUCTION WITH THE AID OF THE GENERAL CONTRACTOR. MISSING SLEEVES SHALL BE REPORTED IMMEDIATELY. NEW SLEEVES SHOWN ON PLANS ARE REQUIRED FOR BOTH PIPING AND ELECTRICAL WIRING AT EACH HARDSCAPE CROSSING. COORDINATE INSTALLATION OF SLEEVING WITH OTHER TRADES. ANY PIPE OR WIRE WHICH PASSES BENEATH EXISTING HARDSCAPE WHERE SLEEVING WAS NOT INSTALLED WILL REQUIRE HORIZONTAL BORING BY THE IRRIGATION CONTRACTOR.
- INSTALL ALL ELECTRICAL POWER TO THE IRRIGATION CONTROL SYSTEM IN ACCORDANCE WITH THE NATIONAL ELECTRIC CODE AND ALL APPLICABLE LOCAL ELECTRIC UTILITY CODES.
- THE FOLLOWING SHOULD BE NOTED REGARDING PIPE SIZING: IF A SECTION OF UNSIZED PIPE IS LOCATED BETWEEN THE IDENTICALLY SIZED SECTIONS, THE UNSIZED PIPE IS THE SAME NOMINAL SIZE AS THE TWO SIZED SECTIONS. THE UNSIZED PIPE SHOULD NOT BE CONFUSED WITH THE DEFAULT PIPE SIZE NOTED IN THE LEGEND.
- MAINLINE PIPE SIZES MAY VARY THROUGHOUT PROJECT. EACH MAINLINE LEG IS SIZED TO ACCOMMODATE LARGEST VALVE ON THAT LEG. STATED SIZE IN LEGEND MAY NOT BE THE LARGEST SIZE ON PLANS.
- TWO-WIRE CONTROL CABLE DOES NOT REQUIRE ADDITIONAL SPARE WIRES TO BE ROUTED WITH MAINLINE.
- TWO-WIRE CONTROL SURGE ARRESTORS SHALL BE INSTALLED PER MANUFACTURER'S RECOMMENDATIONS. ARRESTORS ARE NOT DEPICTED ON PLANS.
- TREES IN TURF ARE NOT IRRIGATED BY DRIP SYSTEM. DRIP LATERAL ROUTED NEAR TREES IN TURF ARE NOT TO RECEIVE DRIP IRRIGATION. TREES IN NATIVE SEED AREAS ARE IRRIGATED ON DRIP SYSTEM.
- VALVES FOR NATIVE SEED AREAS SHALL BE ON A SEPARATE PROGRAM.
- NATIVE SEED AREAS ARE TO BE IRRIGATED WITH A BELOW GRADE SYSTEM BUT UTILIZED FOR ESTABLISHMENT OF SEED. SYSTEM IS NOT INTENDED TO OPERATE BEYOND ESTABLISHMENT.
- NO IRRIGATION EQUIPMENT, INCLUDING BUT NOT LIMITED TO, MAINLINE, VALVES, AND SPRINKLERS, SHALL BE INSTALLED WITHIN 3' OF NEW BUILDING FOUNDATION.

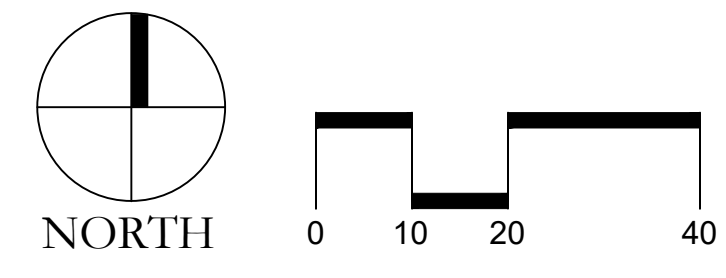
REFERENCE NOTES SCHEDULE

SYMBOL	DESCRIPTION
[1]	THE IRRIGATION SYSTEM POINT-OF-CONNECTION (POC) SHALL BE DOWNSTREAM OF THE IRRIGATION WATER TAP AND METER AT THE APPROXIMATE LOCATION SHOWN (REFER TO CIVIL PLANS FOR EXACT LOCATION). INSTALL BACKFLOW PREVENTION UNIT, MASTER VALVE ASSEMBLY, AND FLOW SENSOR AS INDICATED. VERIFY EXACT LOCATION OF POC WITH OWNER'S REPRESENTATIVE. VERIFY PRESSURE AND FLOW ON SITE PRIOR TO CONSTRUCTION. CONTRACTOR TO INSTALL BACKFLOW PER NATIONAL PLUMBERS CODE AND PER LOCAL CODE. BACKFLOW SHALL BE TESTED UPON INSTALLATION AND ANNUALLY THEREAFTER.
[2]	PEDESTAL MOUNT THE IRRIGATION CONTROLLER AT THE APPROXIMATE LOCATION SHOWN. COORDINATE ELECTRICAL POWER TO THE CONTROLLER WITH THE OWNER'S REPRESENTATIVE. CARE SHOULD BE TAKEN TO INSTALL THE IRRIGATION CONTROLLER IN A LOCATION THAT IS ACCESSIBLE FOR MAINTENANCE, AND SCREENED FROM VIEW EITHER BEHIND ENTRY WALLS, NEXT TO BUILDINGS, OR BEHIND PLANT MATERIAL. FINAL LOCATION TO BE APPROVED BY OWNER'S REPRESENTATIVE. CONTROLLER TO BE INSTALLED PER NATIONAL ELECTRIC CODE.

EMITTER SCHEDULE

PLANT TYPE	EMITTER TYPE	GPH/OUTLET	NO. OF EMITTERS	TOTAL FLOW
GROUND COVER	SINGLE OUTLET	1 GPH	1	1 GPH
PERENNIALS	SINGLE OUTLET	1 GPH	1	1 GPH
1 GAL. SHRUB	SINGLE OUTLET	1 GPH	1	1 GPH
5 GAL. SHRUB	SINGLE OUTLET	1 GPH	2	2 GPH
TREE IN SHRUB BED	SINGLE OUTLET	1 GPH	4-8	4-8 GPH
TREE IN NATIVE SEED	INLINE DRIP	0.6 GPH	N/A	N/A

- NOTES:
- MULTIPLE OUTLET EMITTERS CAN BE UTILIZED IN DENSELY PLANTED AREAS AND FOR TREES IN SHRUB BEDS.
 - NETAFIM TECHLINE CV DRIP TUBING MODEL TLCV6-18 FOR NATIVE TREE RINGS.



Prepared For:
CENTURY LAND HOLDINGS, LLC
8390 EAST CRESCENT PKWY
SUITE 650
GREENWOOD VILLAGE, CO 80111
(303) 770-8300

Irrigation Design
MPI Designs
P.O. BOX 369
Ault, CO 80610
970.402.3047
Michelle@MPIDesignsllc.com

Civil Engineering
MERRICK & COMPANY
5970 GREENWOOD PLAZA BLVD,
GREENWOOD VILLAGE, CO 80111
303.353.3695

COMPARK VILLAGE SOUTH IRRIGATION PLANS
PARKER, CO

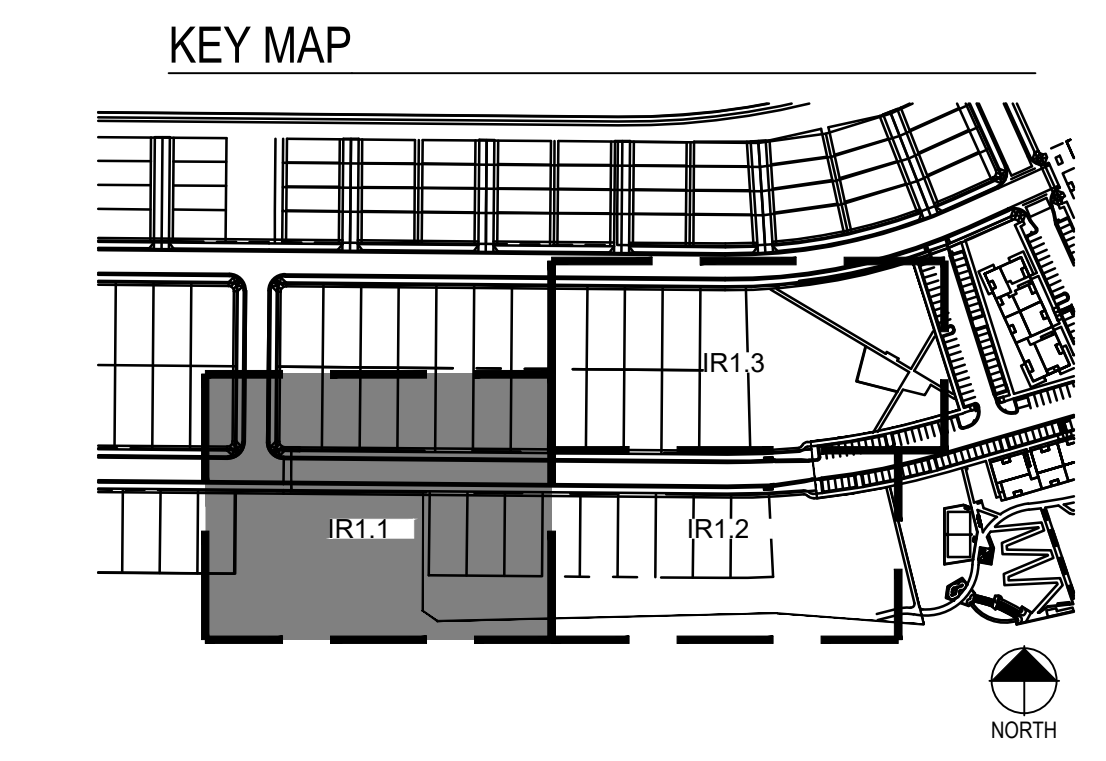
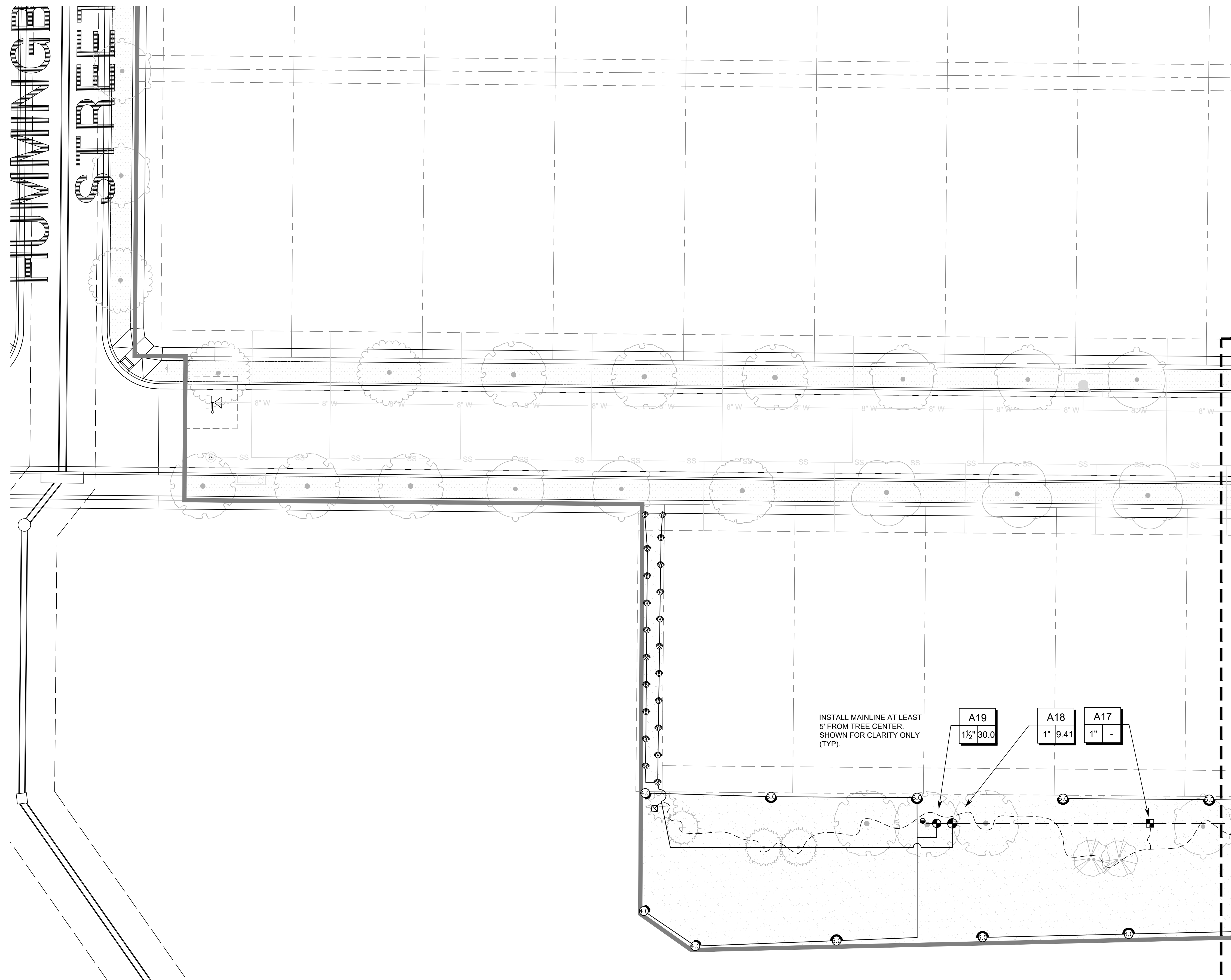
Stamp:
Drawn by:
MLP
Checked by:
MLP
Issue Date:
02/28/2022
Issued For:
TOWN OF PARKER

Rev#	Date	Revisions
1		
2		
3		
4		
5		
6		
7		
8		
9		

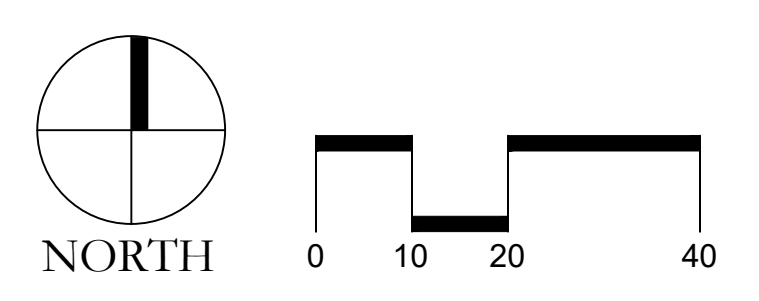
Sheet Name:
IRRIGATION LEGEND
Sheet Number:
9 of **14**

COMPARK VILLAGE SOUTH PRELIMINARY PLAN

A PARCEL OF LAND LOCATED IN A PORTION OF THE SE OF SECTION 6, TOWNSHIP 6 SOUTH,
RANGE 66 WEST OF THE SIXTH PRINCIPAL MERIDIAN,
TOWN OF PARKER, COUNTY OF DOUGLAS, STATE OF COLORADO
7.69 ACRES, 33 RESIDENTIAL LOTS



PRELIMINARY NOT FOR
BIDDING OR CONSTRUCTION



Prepared For:
CENTURY LAND HOLDINGS, LLC
8390 EAST CRESCENT PKWY
SUITE 650
GREENWOOD VILLAGE, CO 80111
(303) 770-8300

Irrigation Design

MPI Designs
P.O. BOX 369
Ault, CO 80610
970.402.3047
Michelle@MPIDesignsllc.com

Civil Engineering

MERRICK & COMPANY
5970 GREENWOOD PLAZA BLVD,
GREENWOOD VILLAGE, CO 80111
303.353.3695

**COMPARK VILLAGE SOUTH
IRRIGATION PLANS**

PARKER, CO

Stamp:

Drawn by:
MLP
Checked by:
MLP
Issue Date:
02/28/2022
Issued For:
TOWN OF PARKER

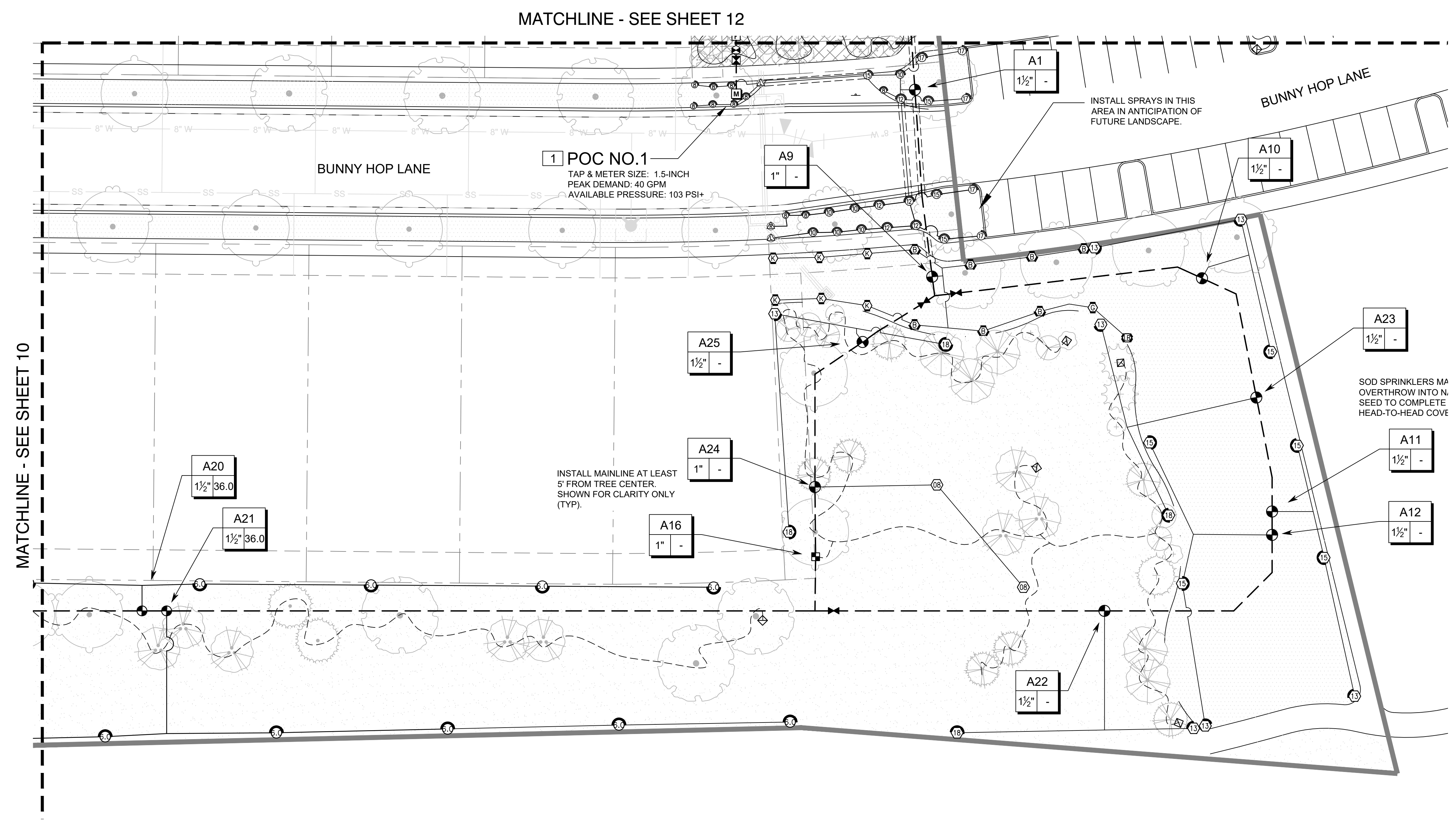
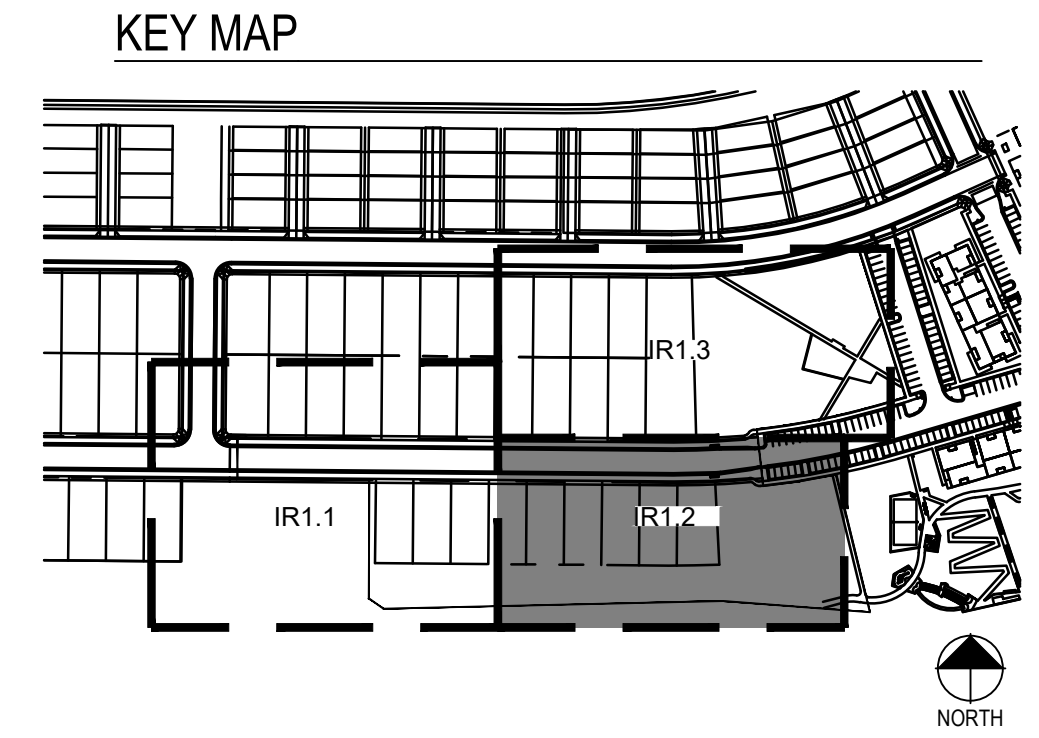
Rev#	Date	Revisions
1		
2		
3		
4		
5		
6		
7		
8		

Sheet Name
IRRIGATION PLAN

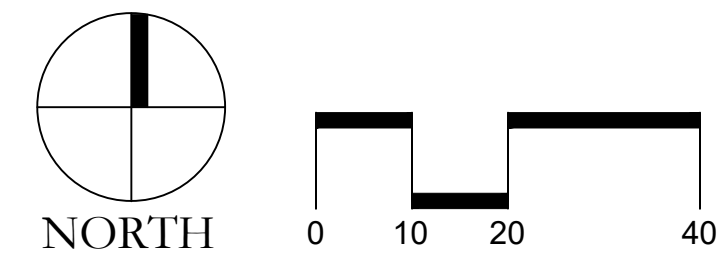
Sheet Number
10 of 14

COMPARK VILLAGE SOUTH PRELIMINARY PLAN

A PARCEL OF LAND LOCATED IN A PORTION OF THE SE OF SECTION 6, TOWNSHIP 6 SOUTH,
RANGE 66 WEST OF THE SIXTH PRINCIPAL MERIDIAN,
TOWN OF PARKER, COUNTY OF DOUGLAS, STATE OF COLORADO
7.69 ACRES, 33 RESIDENTIAL LOTS



PRELIMINARY NOT FOR BIDDING OR CONSTRUCTION



Prepared For:
CENTURY LAND HOLDINGS, LLC
8390 EAST CRESCENT PKWY
SUITE 650
GREENWOOD VILLAGE, CO 80111
(303) 770-8300

Irrigation Design

MPI Designs
P.O. BOX 369
Ault, CO 80610
970.402.3047
Michelle@MPIDesignsllc.com

Civil Engineering

MERRICK & COMPANY
5970 GREENWOOD PLAZA BLVD,
GREENWOOD VILLAGE, CO 80111
303.353.3695

COMPARK VILLAGE SOUTH IRRIGATION PLANS

PARKER, CO

Stamp:

Drawn by:
MLP
Checked by:
MLP
Issue Date:
02/28/2022
Issued For:
TOWN OF PARKER

Rev#	Date	Revisions
1		
2		
3		
4		
5		
6		
7		
8		

Sheet Name
IRRIGATION PLAN

Sheet Number
11 of 14

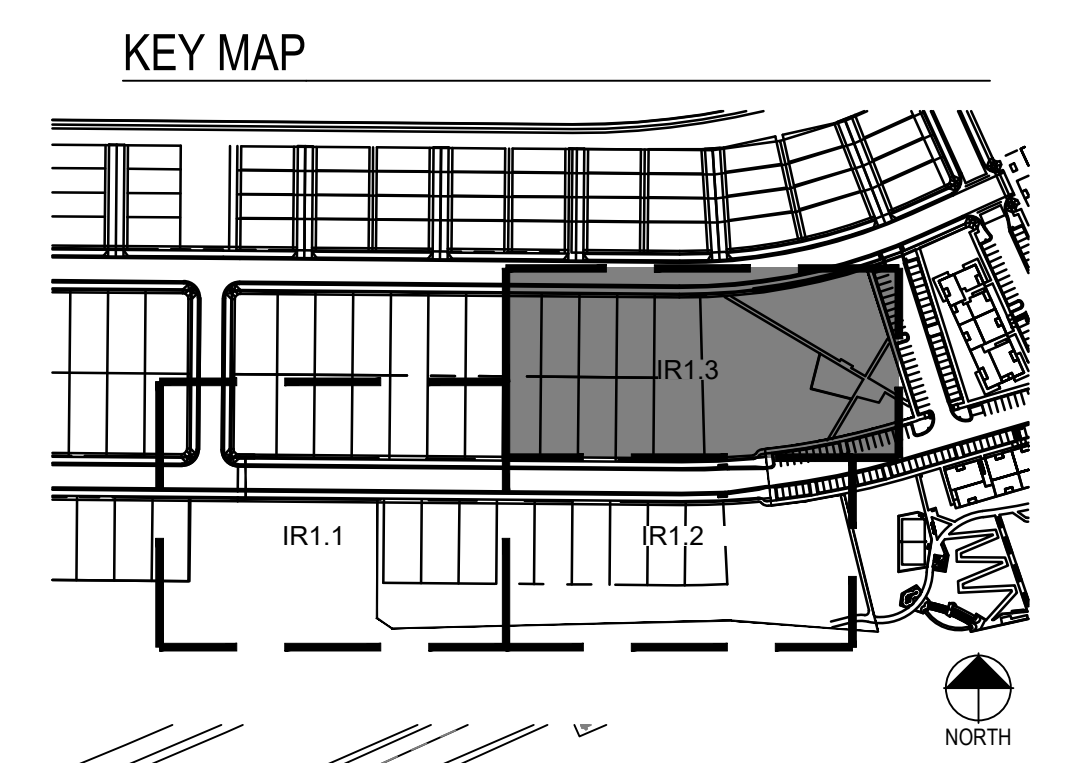
COMPARK VILLAGE SOUTH PRELIMINARY PLAN

A PARCEL OF LAND LOCATED IN A PORTION OF THE SE OF SECTION 6, TOWNSHIP 6 SOUTH,
RANGE 66 WEST OF THE SIXTH PRINCIPAL MERIDIAN,
TOWN OF PARKER, COUNTY OF DOUGLAS, STATE OF COLORADO
7.69 ACRES, 33 RESIDENTIAL LOTS

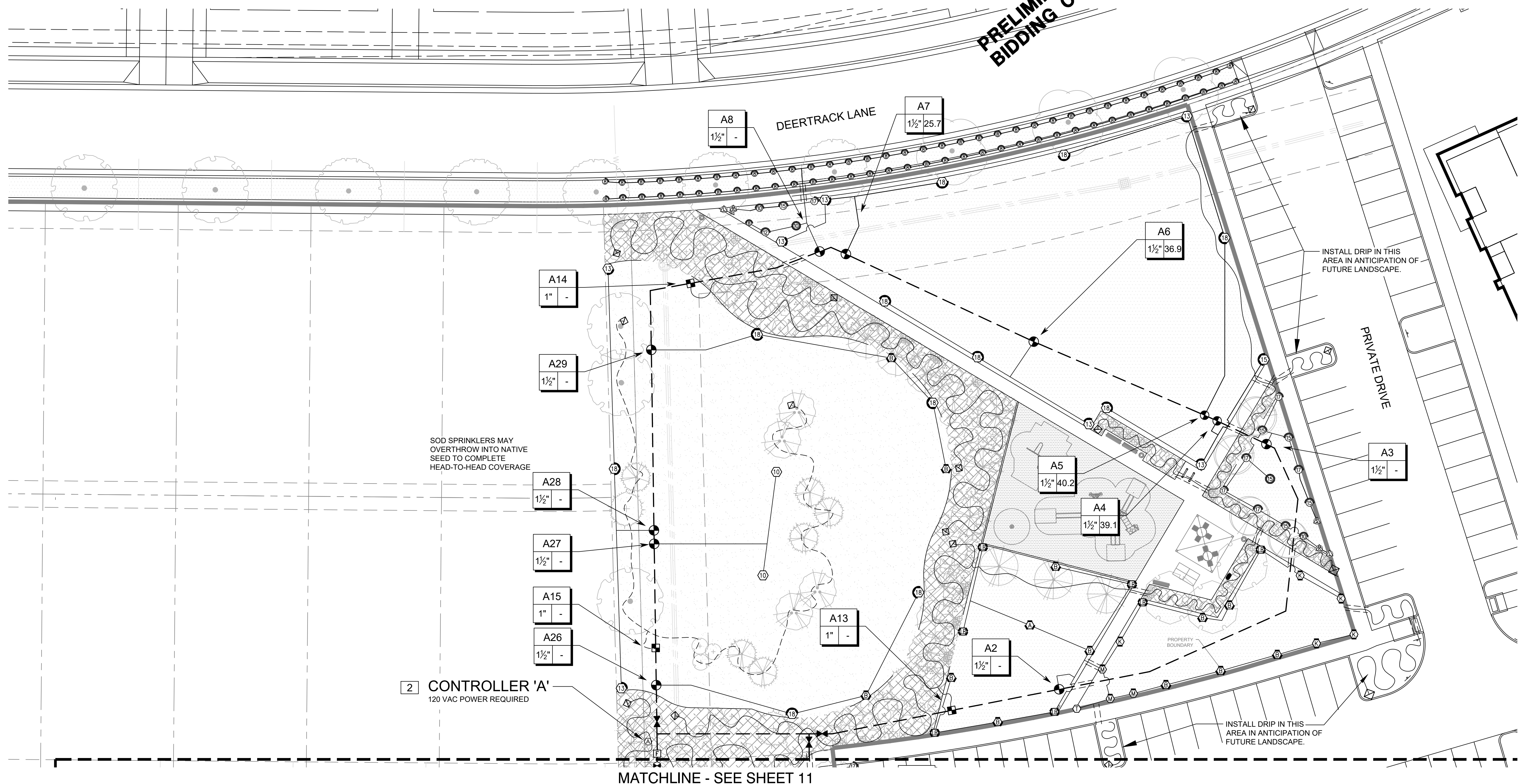
Prepared For
CENTURY LAND HOLDINGS, LLC
8390 EAST CRESCENT PKWY
SUITE 650
GREENWOOD VILLAGE, CO 80111
(303) 770-8300

Irrigation Design
MPI Designs
P.O. BOX 369
Ault, CO 80610
970.402.3047
Michelle@MPIDesignsllc.com

Civil Engineering
MERRICK & COMPANY
5970 GREENWOOD PLAZA BLVD,
GREENWOOD VILLAGE, CO 80111
303.353.3695



**PRELIMINARY NOT FOR
BIDDING OR CONSTRUCTION**



COMPARK VILLAGE SOUTH IRRIGATION PLANS PARKER, CO

Stamp:

Drawn by:
MLP
Checked by:
MLP
Issue Date:
02/28/2022
Issued For:
TOWN OF PARKER

Rev#	Date	Revisions
1		
2		
3		
4		
5		
6		
7		
8		

Sheet Name
IRRIGATION PLAN
Sheet Number
12 of 14

