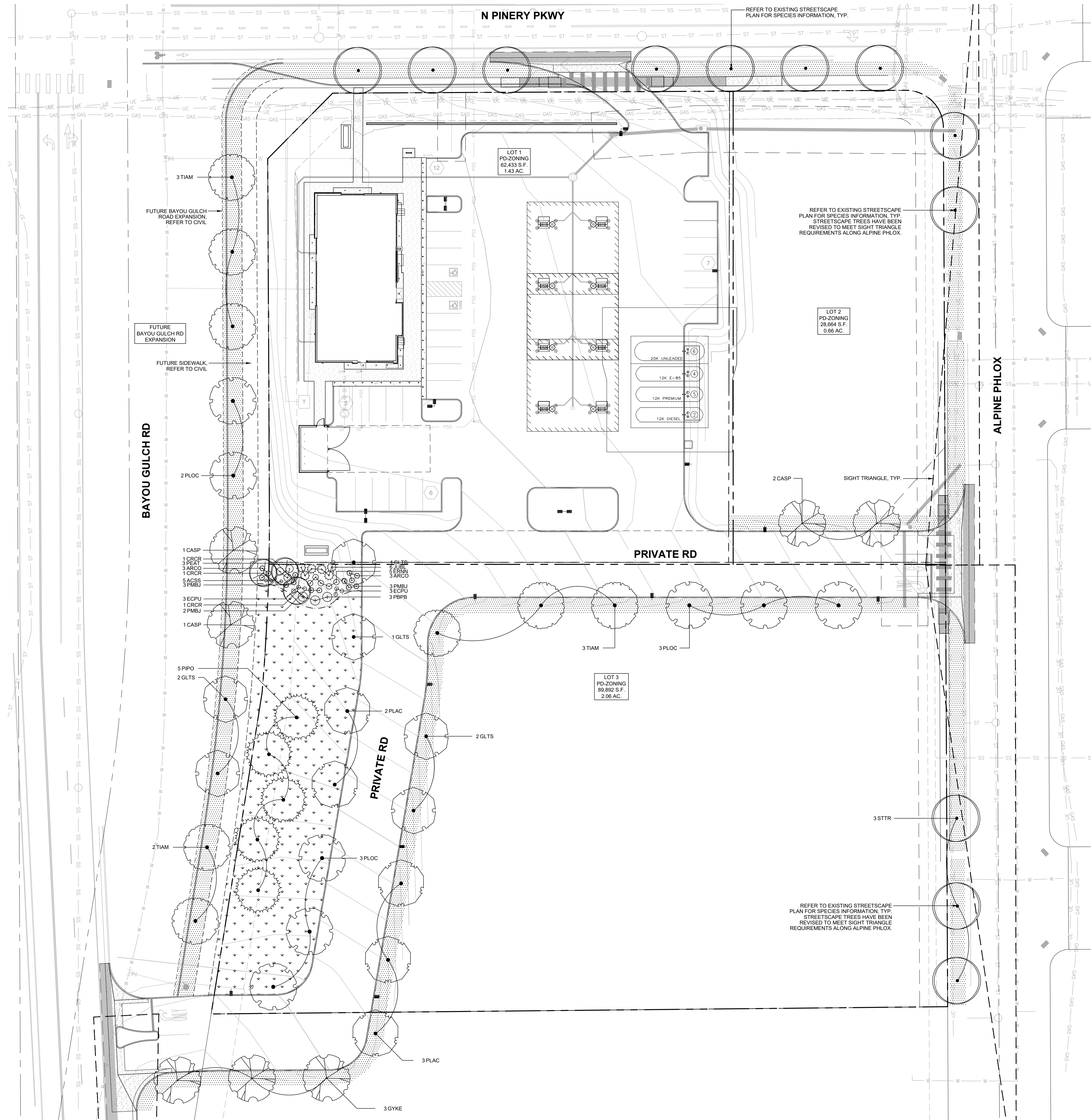


TRAILS AT CROWFOOT FILING NO. 9, 1ST AMENDMENT LANDSCAPE PLAN



LEGEND

- DECIDUOUS TREE
- EVERGREEN TREE
- ORNAMENTAL TREE
- DECIDUOUS SHRUBS
- EVERGREEN SHRUBS
- PERENNIALS
- SOD
- NATIVE SEED MIX
- 2"-6" ROCK MULCH
- LANDSCAPE EDGER
- SIGHT TRIANGLE

STREETSCAPE*

LOCATION	LENGTH	TREE REQUIREMENT 1/40 LF		
		REQUIRED	PROVIDED	SURPLUS/DEFICIT
N PINERY PKWY	308	8	7	-1
ALPINE PHLOX	473	12	5	-7
INTERNAL ACCESS RD - SOUTHEAST	605	15	14	-1
INTERNAL ACCESS RD - WEST	266	7	7	+0
BAYOU GULCH RD	461	12	11	-1

* STREETSCAPE TO BE PROVIDED BY OTHERS. TREE DEFICITS ARE DUE TO UTILITIES AND SIGHT TRIANGLE CONSTRAINTS.*

LOT 3 UNBUILDABLE TRACT LANDSCAPE*

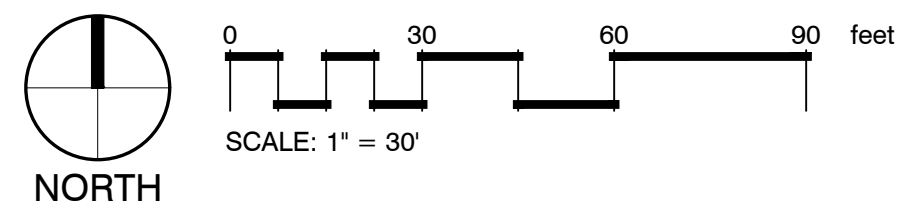
NET TRACT AREA	LANDSCAPE AREA			% LIVE COVER		
	REQUIRED 15%	PROVIDED	SURPLUS/DEFICIT	REQUIRED (75%)	PROVIDED	SURPLUS/DEFICIT
12,605 SF	1,891 SF	12,605 SF	+10,714 SF	9,454 SF	12,462 SF	+3,008 SF

TRACT LANDSCAPE

TREE REQUIREMENT 1/1500 SF			SHRUB REQUIREMENT 5/1500 SF		
REQUIRED	PROVIDED	SURPLUS/DEFICIT	REQUIRED	PROVIDED	SURPLUS/DEFICIT
8	8	+0	42	42	+0

* LOT 3 UNBUILDABLE TRACT LANDSCAPE TO BE PROVIDED BY OTHERS.

1 LANDSCAPE PLAN



PRELIMINARY
NOT FOR
CONSTRUCTION



1459 Grand Ave
Des Moines, IA 50309
P: 888-458-6646

SITE PLAN
2293 - KUM AND GO - PARKER, CO
NEC OF BAYOU GULCH RD AND PINERY PKWY
LANDSCAPE PLAN

KG PROJECT TEAM: EES
RDM:
SDM:
CPM:

DATE	REVISION DESCRIPTION
3/16/23	PER COMMENTS
1	

DATE: 09-23-2022
SHEET NUMBER:

X:\DOPBOX\VALERIAN\TEAM FOLDER\PROJECTS\2204\ EES_PINERY PKWY K&G 22832\WORKING\2023-03-16_SUBMITTAL_2\REF\PLAT_SET\2204\LT_LANDSCAPE PLAN.DWG

