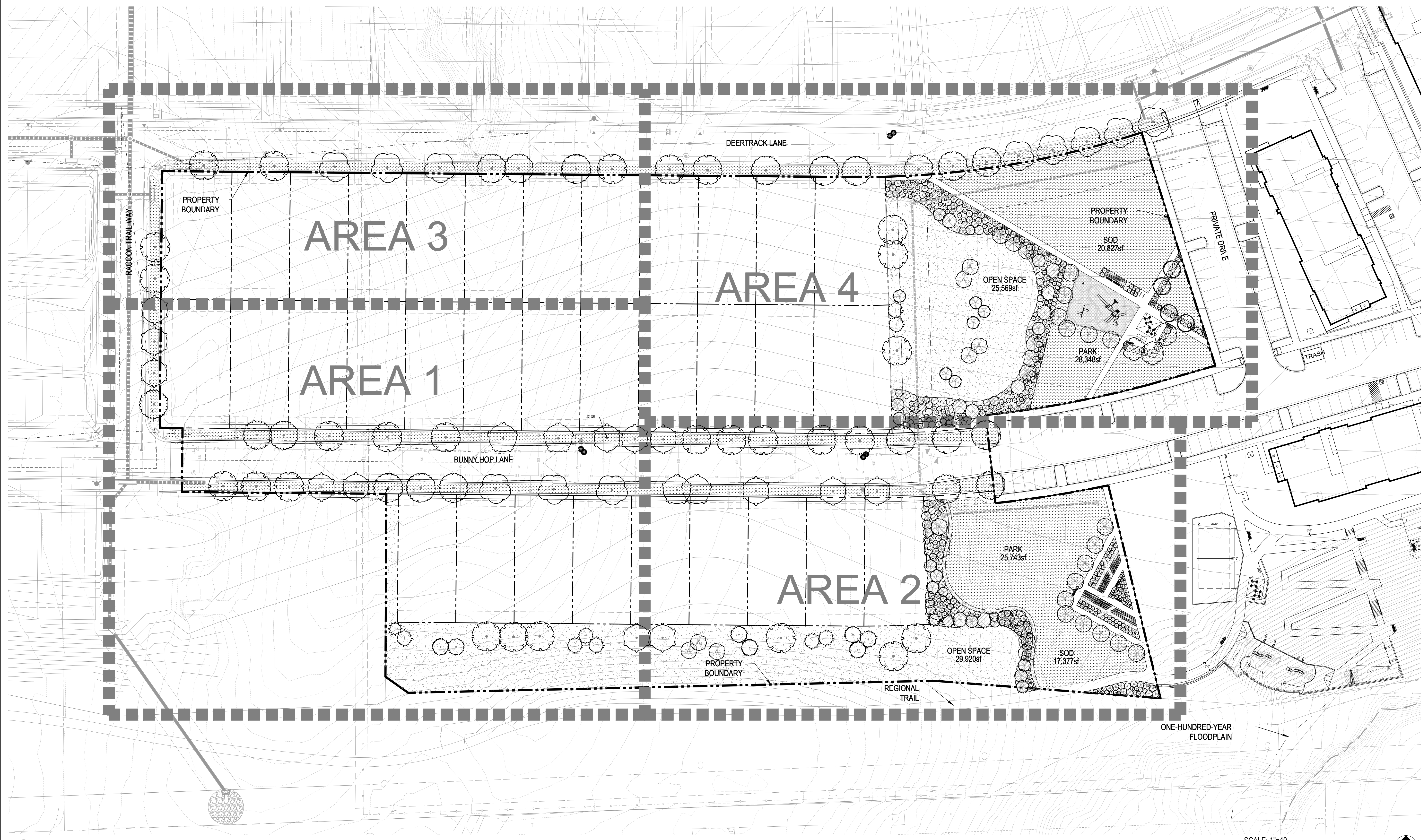


COMPARK VILLAGE SOUTH FINAL PLAT

A PARCEL OF LAND LOCATED IN A PORTION OF THE SE OF SECTION 6, TOWNSHIP 6 SOUTH,
RANGE 66 WEST OF THE SIXTH PRINCIPAL MERIDIAN,
TOWN OF PARKER, COUNTY OF DOUGLAS, STATE OF COLORADO
7.69 ACRES, 33 RESIDENTIAL LOTS



1 MASTER LANDSCAPE PLAN

SCALE: 1"=40'
0 20 40 80 120 NORTH

Prepared For
CENTURY LAND HOLDINGS, LLC
8390 EAST CRESCENT PKWY
SUITE 650
GREENWOOD VILLAGE, CO 80111
(303) 770-8300

Land Planning
people creating spaces
pcs group inc. www.pcsgroupco.com
p.o. box 18287
denver, co 80218
1.303.531.4905 . 1.303.531.4908

Civil Engineering
MERRICK & COMPANY
5970 GREENWOOD PLAZA BLVD,
GREENWOOD VILLAGE, CO 80111
303.353.3695

COMPARK VILLAGE SOUTH LANDSCAPE PLANS AND MASTER STREET TREE PLANS PARKER, CO

Stamp:

Drawn by:
AML
Checked by:
PMS
Issue Date:
02.10.2023
Issued For:
TOWN OF PARKER

Rev#	Date	Revisions

Sheet Name
MASTER
LANDSCAPE PLAN
Sheet Number

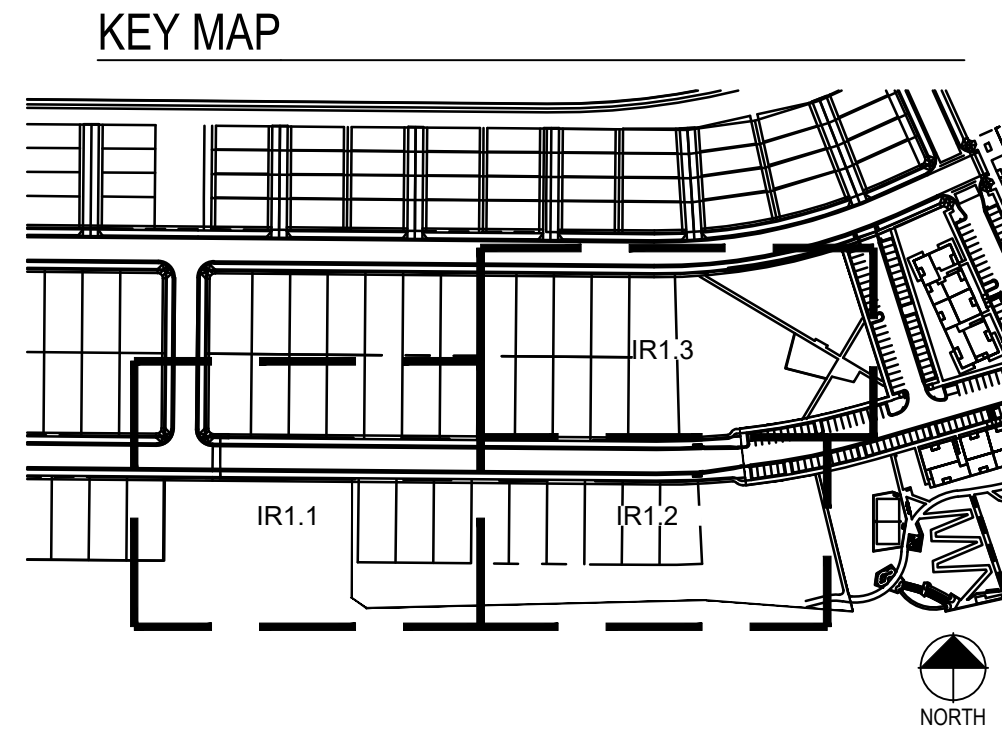
COMPARK VILLAGE SOUTH FINAL PLAT

A PARCEL OF LAND LOCATED IN A PORTION OF THE SE OF SECTION 6, TOWNSHIP 6 SOUTH,
RANGE 66 WEST OF THE SIXTH PRINCIPAL MERIDIAN,
TOWN OF PARKER, COUNTY OF DOUGLAS, STATE OF COLORADO
7.69 ACRES, 33 RESIDENTIAL LOTS

PRELIMINARY NOT FOR
BIDDING OR CONSTRUCTION

IRRIGATION SCHEDULE

SYMBOL	MANUFACTURER/MODEL/DESCRIPTION	PSI	SYMBOL	MANUFACTURER/MODEL/DESCRIPTION
	HUNTER PROS-06-PRS30-CV 5' STRIP SPRAY TURF SPRAY, 30 PSI REGULATED 6.0" POP-UP, WITH FACTORY INSTALLED DRAIN CHECK VALVE. CO-MOLDED WIPER SEAL WITH UV RESISTANT MATERIAL.	30		HUNTER PROS-06-PRS30-CV 8' RADIUS TURF SPRAY, 30 PSI REGULATED 6.0" POP-UP, WITH FACTORY INSTALLED DRAIN CHECK VALVE. CO-MOLDED WIPER SEAL WITH UV RESISTANT MATERIAL.
	HUNTER PROS-06-PRS30-CV 10' RADIUS TURF SPRAY, 30 PSI REGULATED 6.0" POP-UP, WITH FACTORY INSTALLED DRAIN CHECK VALVE. CO-MOLDED WIPER SEAL WITH UV RESISTANT MATERIAL.	30		HUNTER PROS-06-PRS30-CV 12' RADIUS TURF SPRAY, 30 PSI REGULATED 6.0" POP-UP, WITH FACTORY INSTALLED DRAIN CHECK VALVE. CO-MOLDED WIPER SEAL WITH UV RESISTANT MATERIAL.
	HUNTER PROS-06-PRS30-CV 15' RADIUS TURF SPRAY, 30 PSI REGULATED 6.0" POP-UP, WITH FACTORY INSTALLED DRAIN CHECK VALVE. CO-MOLDED WIPER SEAL WITH UV RESISTANT MATERIAL.	30		HUNTER PROS-06-PRS30-CV 17' RADIUS TURF SPRAY, 30 PSI REGULATED 6.0" POP-UP, WITH FACTORY INSTALLED DRAIN CHECK VALVE. CO-MOLDED WIPER SEAL WITH UV RESISTANT MATERIAL.
	HUNTER MP CORNER PROS-06-PRS40-CV TURF ROTATOR, 6" POP-UP WITH FACTORY INSTALLED CHECK VALVE, PRESSURE REGULATED TO 40 PSI, MP ROTATOR NOZZLE ON PRS40 BODY. T=TURQUOISE ADJ ARC 45-105.	40		HUNTER MP1000 PROS-06-PRS40-CV TURF ROTATOR, 6" POP-UP WITH CHECK VALVE, PRESSURE REGULATED TO 40 PSI, MP ROTATOR NOZZLE ON PRS40 BODY. M=MAROON ADJ ARC 90 TO 210, L=LIGHT BLUE 210 TO 270 ARC, O=OLIVE 360 ARC.
	HUNTER MP2000 PROS-06-PRS40-CV TURF ROTATOR, 6" POP-UP WITH FACTORY INSTALLED CHECK VALVE, PRESSURE REGULATED TO 40 PSI, MP ROTATOR NOZZLE ON PRS40 BODY. K=BLACK ADJ ARC 90-210, G=GREEN ADJ ARC 210-270, R=RED 360 ARC.	40		HUNTER MP3000 PROS-06-PRS40-CV TURF ROTATOR, 6" POP-UP WITH FACTORY INSTALLED CHECK VALVE, PRESSURE REGULATED TO 40 PSI, MP ROTATOR NOZZLE ON PRS40 BODY. B=BLUE ADJ ARC 90-210, Y=YELLOW ADJ ARC 210-270, A=GRAY 360 ARC.
	HUNTER MP3500 PROS-06-PRS40-CV TURF ROTATOR, 6" POP-UP WITH FACTORY INSTALLED CHECK VALVE, PRESSURE REGULATED TO 40 PSI, MP ROTATOR NOZZLE ON PRS40 BODY. LB=LIGHT BROWN ADJUSTABLE ARC, 90-210.	40		HUNTER MP800SR PROS-06-PRS40-CV TURF ROTATOR, 6" POP-UP WITH CHECK VALVE, PRESSURE REGULATED TO 40 PSI, MP ROTATOR NOZZLE ON PRS40 BODY. ADJ=ORANGE AND GRAY (ARC 90-210), 360=LIME GREEN AND GRAY (ARC 360)
	HUNTER I-20-06-SS TURF ROTATOR, 6.0" POP-UP, ADJUSTABLE AND FULL CIRCLE. STAINLESS STEEL RISER, DRAIN CHECK VALVE. STANDARD NOZZLE. I-20 ROTORS IN NATIVE SEED AREAS SHALL BE PLASTIC RISERS	45		HUNTER I-20-06-SS TURF ROTATOR, 6.0" POP-UP, ADJUSTABLE AND FULL CIRCLE. STAINLESS STEEL RISER, DRAIN CHECK VALVE. STANDARD NOZZLE. I-20 ROTORS IN NATIVE SEED AREAS SHALL BE PLASTIC RISERS
	HUNTER I-20-06-SS TURF ROTATOR, 6.0" POP-UP, ADJUSTABLE AND FULL CIRCLE. STAINLESS STEEL RISER, DRAIN CHECK VALVE. STANDARD NOZZLE. I-20 ROTORS IN NATIVE SEED AREAS SHALL BE PLASTIC RISERS	45		HUNTER I-20-06-SS TURF ROTATOR, 6.0" POP-UP, ADJUSTABLE AND FULL CIRCLE. STAINLESS STEEL RISER, DRAIN CHECK VALVE. STANDARD NOZZLE. I-20 ROTORS IN NATIVE SEED AREAS SHALL BE PLASTIC RISERS
	HUNTER I-25-06-SS TURF ROTATOR, 6" POP-UP, ADJUSTABLE AND FULL CIRCLE. STAINLESS STEEL RISER, DRAIN CHECK VALVE. STANDARD NOZZLE.	50		HUNTER I-25-06-SS TURF ROTATOR, 6" POP-UP, ADJUSTABLE AND FULL CIRCLE. STAINLESS STEEL RISER, DRAIN CHECK VALVE. STANDARD NOZZLE.
	HUNTER I-25-06-SS TURF ROTATOR, 6" POP-UP, ADJUSTABLE AND FULL CIRCLE. STAINLESS STEEL RISER, DRAIN CHECK VALVE. STANDARD NOZZLE.	50		HUNTER I-25-06-SS TURF ROTATOR, 6" POP-UP, ADJUSTABLE AND FULL CIRCLE. STAINLESS STEEL RISER, DRAIN CHECK VALVE. STANDARD NOZZLE.
	HUNTER I-25-06-SS TURF ROTATOR, 6" POP-UP, ADJUSTABLE AND FULL CIRCLE. STAINLESS STEEL RISER, DRAIN CHECK VALVE. STANDARD NOZZLE.	50		HUNTER I-25-06-SS TURF ROTATOR, 6" POP-UP, ADJUSTABLE AND FULL CIRCLE. STAINLESS STEEL RISER, DRAIN CHECK VALVE. STANDARD NOZZLE.
	HUNTER I-25-06-SS TURF ROTATOR, 6" POP-UP, ADJUSTABLE AND FULL CIRCLE. STAINLESS STEEL RISER, DRAIN CHECK VALVE. STANDARD NOZZLE.	50		HUNTER I-25-06-SS TURF ROTATOR, 6" POP-UP, ADJUSTABLE AND FULL CIRCLE. STAINLESS STEEL RISER, DRAIN CHECK VALVE. STANDARD NOZZLE.
	HUNTER I-25-06-SS TURF ROTATOR, 6" POP-UP, ADJUSTABLE AND FULL CIRCLE. STAINLESS STEEL RISER, DRAIN CHECK VALVE. STANDARD NOZZLE.	50		HUNTER I-25-06-SS TURF ROTATOR, 6" POP-UP, ADJUSTABLE AND FULL CIRCLE. STAINLESS STEEL RISER, DRAIN CHECK VALVE. STANDARD NOZZLE.



INSTALLATION GENERAL NOTES

- DESIGN ASSUMES A MINIMUM DYNAMIC PRESSURE AVAILABLE FOR THE IRRIGATION SYSTEM (PER CITY ENGINEER) OF 103 PSI, AT A MAXIMUM PEAK FLOW OF 40 GPM AT THE 1.5-INCH POINT-OF-CONNECTION (POC). VERIFY PRESSURE AND FLOW ON SITE PRIOR TO CONSTRUCTION. CONTACT GENERAL CONTRACTOR OR OWNER'S REPRESENTATIVE IMMEDIATELY IF FLOW OR PRESSURE ARE LOWER THAN LISTED ABOVE.
- ALL MAINLINES SHALL BE INSTALLED AT LEAST 5' FROM CENTER OF TREES, WHERE POSSIBLE. DESIGN IS SHOWN FOR CLARITY, THUS MAINLINE ROUTING IN FIELD MAY LOOK SLIGHTLY DIFFERENT THAN DEPICTED IN DRAWINGS.
- CONTRACTOR SHALL CREATE A LAMINATED CONTROLLER CHART ADHERED TO THE INSIDE OF THE CONTROLLER COVER OR A LAMINATED COLORED CONTROLLER MAP.
- CONTRACTOR SHALL BECOME FAMILIAR WITH THE SPECIFICATIONS AND INSTALLATION DETAILS FOR THIS AND RELATED WORK PRIOR TO CONSTRUCTION. FOR CLARIFICATION, CONTACT IRRIGATION DESIGNER PRIOR TO CONSTRUCTION.
- UPON FINAL ACCEPTANCE, CONTRACTOR SHALL TURN OVER REQUIRED ADJUSTMENT KEYS INCLUDING BUT NOT LIMITED TO CONTROLLER ENCLOSURE AND BACKFLOW ENCLOSURE KEY, LOCKING VALVE BOX KEYS, QUICK COUPLER KEYS, GATE VALVE KEY, SPRINKLER HEAD AND NOZZLE ADJUSTMENT KEYS.
- UPON FINAL ACCEPTANCE, CONTRACTOR SHALL TURN OVER SPARE PARTS PERTAINING TO INSTALLED SYSTEM: BACKFLOW WINTERIZATION INSERT, TWO OF EVERY HEAD AND NOZZLE (ROTOR NOZZLE TREE INCLUDED), ONE RCV DIAPHRAGM, ETC.
- COORDINATE UTILITY LOCATES OF UNDERGROUND UTILITIES PRIOR TO CONSTRUCTION ("811-CALL BEFORE YOU DIG").
- IF DISCREPANCIES ARE NOTED IN THE FIELD BETWEEN SITE CONDITIONS AND PROVIDED DESIGNS, CONTRACTOR SHALL NOTIFY OWNER'S REPRESENTATIVE OR GENERAL CONTRACTOR IMMEDIATELY. DO NOT PROCEED WITH THE INSTALLATION OF THE IRRIGATION SYSTEM IF SUCH DISCREPANCIES IN THE FIELD AFFECT THE PROVIDED DESIGN, DETAILS, OR SPECIFICATIONS.
- ALL IRRIGATION COMPONENTS (MAINLINE, WIRES, LATERAL LINES, ETC.) SHALL BE INSTALLED IN LANDSCAPED AREAS WHENEVER POSSIBLE, EVEN THOUGH SAID IRRIGATION COMPONENTS MAY BE SHOWN OUTSIDE PLANTING AREAS FOR CLARITY.
- AVOID CONFLICTS BETWEEN THE IRRIGATION SYSTEM, PLANTING MATERIALS, AND ARCHITECTURAL FEATURES WHENEVER POSSIBLE. COORDINATE POTENTIAL RELOCATION OF BOULDERS AND TREES IN TURF AREAS WITH LANDSCAPE ARCHITECT PRIOR TO SPRINKLER LAYOUT. IF LANDSCAPE MATERIAL CANNOT BE RELOCATED, ADDITIONAL SPRINKLERS MAY BE REQUIRED.
- WHERE POSSIBLE, MAINTAIN 3'-5' DISTANCE FROM CENTER OF TREE TO MAINLINE AND WIRES. VALVE BOXES SHALL BE AT LEAST 3' FROM TREE CENTER. MAINLINE ROUTING AND VALVE LOCATIONS ARE SHOWN FOR CLARITY AND MAY BE SHOWN WITHIN THE 3'-5' RANGE NOTED ABOVE.
- CROSS FITTINGS ARE NOT ALLOWED, ONLY STANDARD TEES AND ELBOWS.
- CONTRACTOR SHALL INSTALL NOZZLES PER PLAN, UNLESS IRRIGATED AREA CHANGED IN SIZE OR PLANT MATERIAL TYPE CHANGES. IF NOZZLE CHANGES ARE REQUIRED AND ARE SIGNIFICANT IN SIZE, CONTRACTOR SHALL CONTACT IRRIGATION DESIGNER FOR APPROVAL.
- CONTRACTOR SHALL FIELD LOCATE ANY EXISTING SLEEVES ON SITE PRIOR TO CONSTRUCTION WITH THE AID OF THE GENERAL CONTRACTOR. MISSING SLEEVES SHALL BE REPORTED IMMEDIATELY. NEW SLEEVES SHOWN ON PLANS ARE REQUIRED FOR BOTH PIPING AND ELECTRICAL WIRING AT EACH HARDSCAPE CROSSING. COORDINATE INSTALLATION OF SLEEVING WITH OTHER TRADES. ANY PIPE OR WIRE WHICH PASSES BENEATH EXISTING HARDSCAPE WHERE SLEEVING WAS NOT INSTALLED WILL REQUIRE HORIZONTAL BORING BY THE IRRIGATION CONTRACTOR.
- INSTALL ALL ELECTRICAL POWER TO THE IRRIGATION CONTROL SYSTEM IN ACCORDANCE WITH THE NATIONAL ELECTRIC CODE AND ALL APPLICABLE LOCAL ELECTRIC UTILITY CODES.
- THE FOLLOWING SHOULD BE NOTED REGARDING PIPE SIZING: IF A SECTION OF UNSIZED PIPE IS LOCATED BETWEEN THE IDENTICALLY SIZED SECTIONS, THE UNSIZED PIPE IS THE SAME NOMINAL SIZE AS THE TWO SIZED SECTIONS. THE UNSIZED PIPE SHOULD NOT BE CONFUSED WITH THE DEFAULT PIPE SIZE NOTED IN THE LEGEND.
- MAINLINE PIPE SIZES MAY VARY THROUGHOUT PROJECT. EACH MAINLINE LEG IS SIZED TO ACCOMMODATE LARGEST VALVE ON THAT LEG. STATED SIZE IN LEGEND MAY NOT BE THE LARGEST SIZE ON PLANS.
- TWO-WIRE CONTROL CABLE DOES NOT REQUIRE ADDITIONAL SPARE WIRES TO BE ROUTED WITH MAINLINE.
- TWO-WIRE CONTROL SURGE ARRESTORS SHALL BE INSTALLED PER MANUFACTURER'S RECOMMENDATIONS. ARRESTORS ARE NOT DEPICTED ON PLANS.
- TREES IN TURF ARE NOT IRRIGATED BY DRIP SYSTEM. DRIP LATERAL ROUTED NEAR TREES IN TURF ARE NOT TO RECEIVE DRIP IRRIGATION. TREES IN NATIVE SEED AREAS ARE IRRIGATED ON DRIP SYSTEM.
- VALVES FOR NATIVE SEED AREAS SHALL BE ON A SEPARATE PROGRAM.
- NATIVE SEED AREAS ARE TO BE IRRIGATED WITH A BELOW GRADE SYSTEM BUT UTILIZED FOR ESTABLISHMENT OF SEED. SYSTEM IS NOT INTENDED TO OPERATE BEYOND ESTABLISHMENT.
- NO IRRIGATION EQUIPMENT, INCLUDING BUT NOT LIMITED TO, MAINLINE, VALVES, AND SPRINKLERS, SHALL BE INSTALLED WITHIN 3' OF NEW BUILDING FOUNDATION.

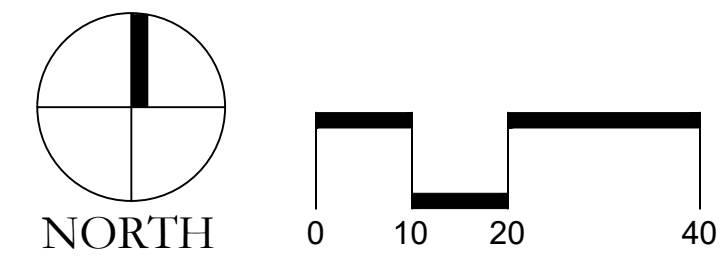
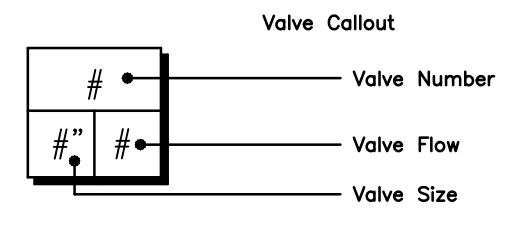
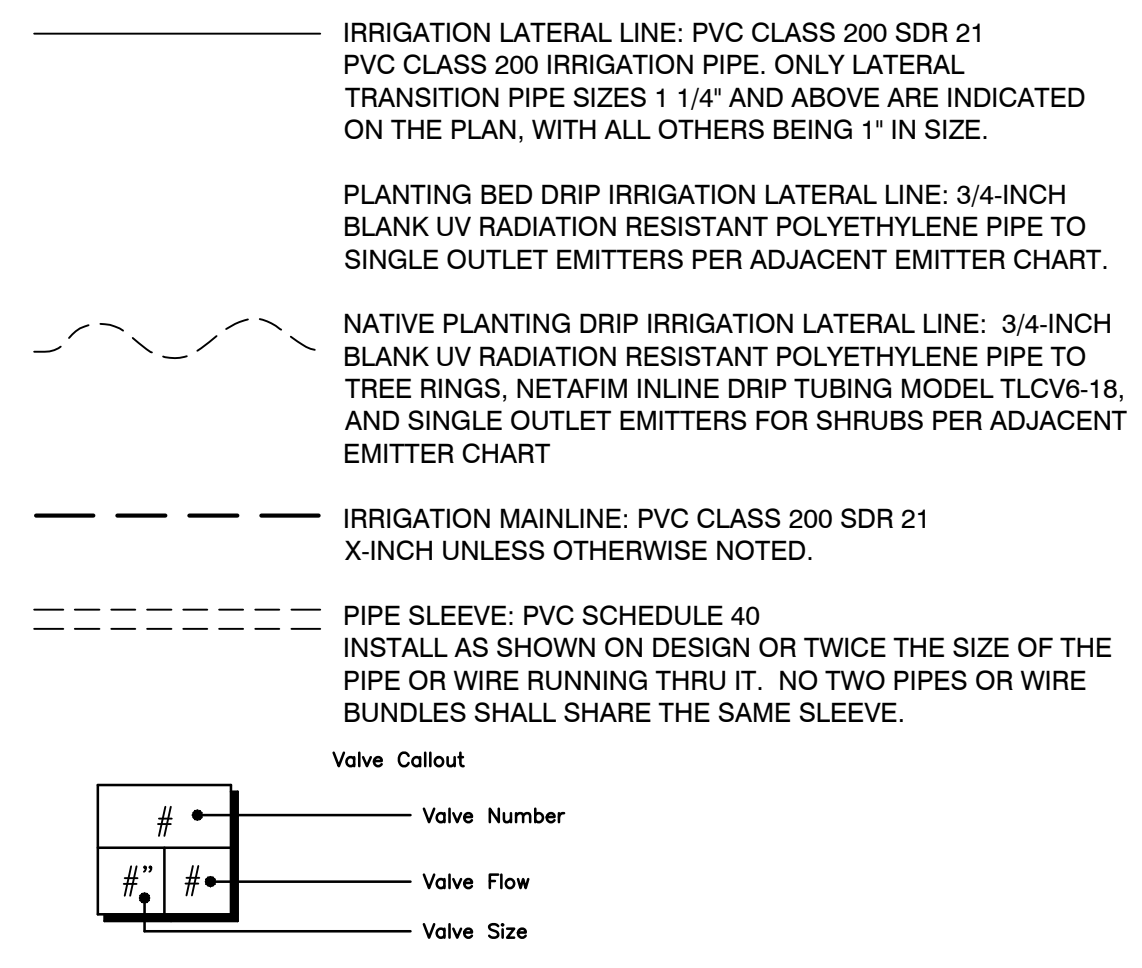
REFERENCE NOTES SCHEDULE

SYMBOL	DESCRIPTION
[1]	THE IRRIGATION SYSTEM POINT-OF-CONNECTION (POC) SHALL BE DOWNSTREAM OF THE IRRIGATION WATER TAP AND METER AT THE APPROXIMATE LOCATION SHOWN (REFER TO CIVIL PLANS FOR EXACT LOCATION). INSTALL BACKFLOW PREVENTION UNIT, MASTER VALVE ASSEMBLY, AND FLOW SENSOR AS INDICATED. VERIFY EXACT LOCATION OF POC WITH OWNER'S REPRESENTATIVE. VERIFY PRESSURE AND FLOW ON SITE PRIOR TO CONSTRUCTION. CONTRACTOR TO INSTALL BACKFLOW PER NATIONAL PLUMBERS CODE AND PER LOCAL CODE. BACKFLOW SHALL BE TESTED UPON INSTALLATION AND ANNUALLY THEREAFTER.
[2]	PEDESTAL MOUNT THE IRRIGATION CONTROLLER AT THE APPROXIMATE LOCATION SHOWN. COORDINATE ELECTRICAL POWER TO THE CONTROLLER WITH THE OWNER'S REPRESENTATIVE. CARE SHOULD BE TAKEN TO INSTALL THE IRRIGATION CONTROLLER IN A LOCATION THAT IS ACCESSIBLE FOR MAINTENANCE, AND SCREENED FROM VIEW EITHER BEHIND ENTRY WALLS, NEXT TO BUILDINGS, OR BEHIND PLANT MATERIAL. FINAL LOCATION TO BE APPROVED BY OWNER'S REPRESENTATIVE. CONTROLLER TO BE INSTALLED PER NATIONAL ELECTRIC CODE.

EMITTER SCHEDULE

PLANT TYPE	EMITTER TYPE	GPH/OUTLET	NO. OF EMITTERS	TOTAL FLOW
GROUND COVER	SINGLE OUTLET	1 GPH	1	1 GPH
PERENNIALS	SINGLE OUTLET	1 GPH	1	1 GPH
1 GAL. SHRUB	SINGLE OUTLET	1 GPH	1	1 GPH
5 GAL. SHRUB	SINGLE OUTLET	1 GPH	2	2 GPH
TREE IN SHRUB BED	SINGLE OUTLET	1 GPH	4-8	4-8 GPH
TREE IN NATIVE SEED	INLINE DRIP	0.6 GPH	N/A	N/A

- NOTES:
- MULTIPLE OUTLET EMITTERS CAN BE UTILIZED IN DENSELY PLANTED AREAS AND FOR TREES IN SHRUB BEDS.
 - NETAFIM TECHLINE CV DRIP TUBING MODEL TLCV6-18 FOR NATIVE TREE RINGS.



Prepared For:
CENTURY LAND HOLDINGS, LLC
8390 EAST CRESCENT PKWY
SUITE 650
GREENWOOD VILLAGE, CO 80111
(303) 770-8300
Irrigation Design

MPi Designs
PO BOX 369 • AULT, CO • 80610
970-402-3047
Michelle@MPiDesignsllc.com

Civil Engineering
MERRICK & COMPANY
5970 GREENWOOD PLAZA BLVD,
GREENWOOD VILLAGE, CO 80111
303.353.3695

COMPARK VILLAGE SOUTH
IRRIGATION PLANS
PARKER, CO

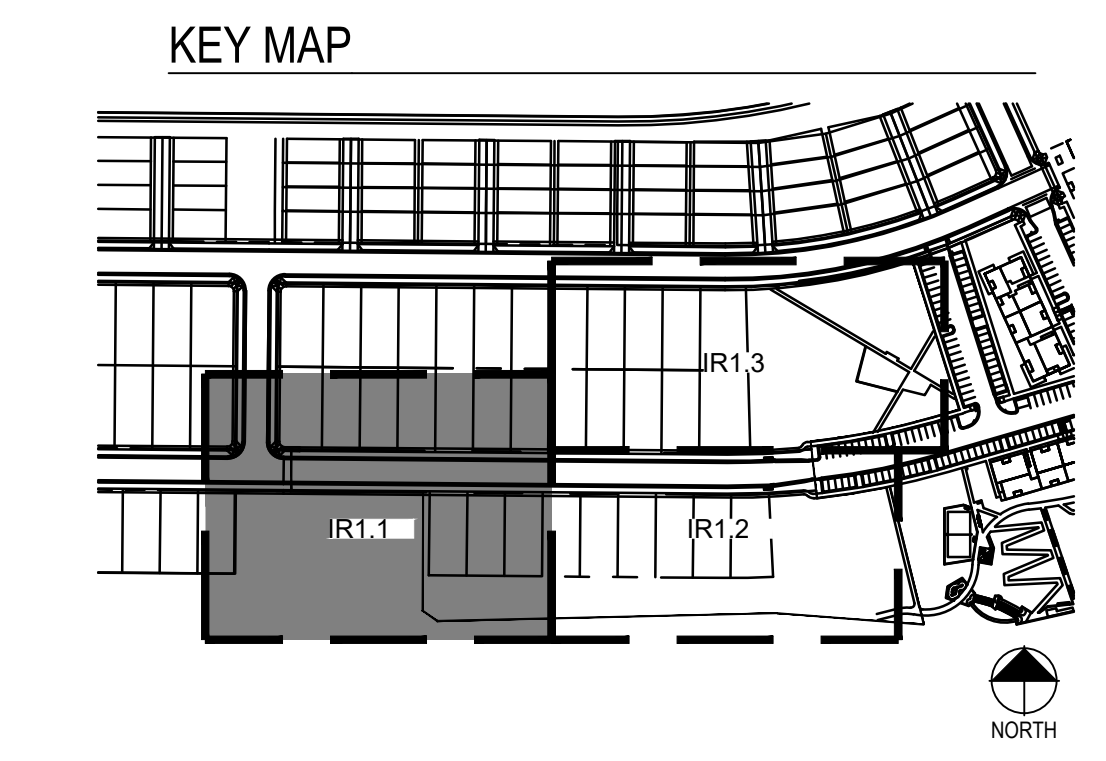
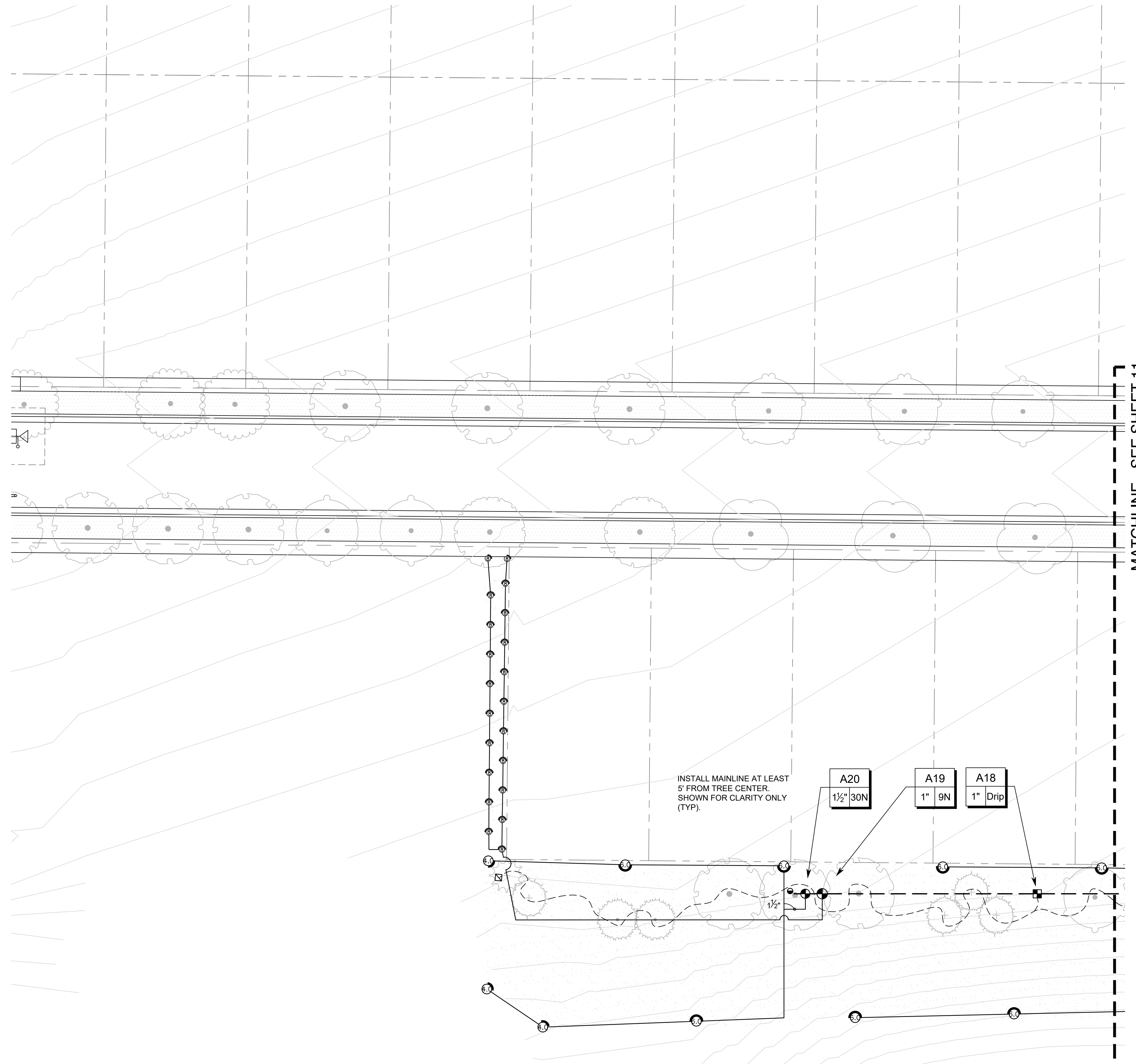
Stamp:
Drawn by:
MLP
Checked by:
MLP
Issue Date:
04/22/2022
Issued For:
TOWN OF PARKER

Rev#	Date	Revisions
1	11-08-22	TOWN OF PARKER REVIEW
2	02-10-23	FOR CONSTRUCTION
3		
4		
5		
6		
7		
8		

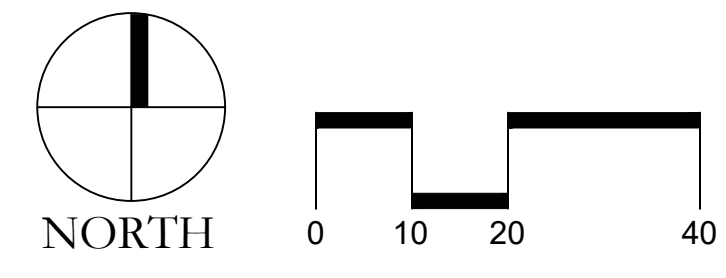
Sheet Name:
**IRRIGATION
LEGEND**
Sheet Number:
9 of **14**

COMPARK VILLAGE SOUTH FINAL PLAT

A PARCEL OF LAND LOCATED IN A PORTION OF THE SE OF SECTION 6, TOWNSHIP 6 SOUTH,
RANGE 66 WEST OF THE SIXTH PRINCIPAL MERIDIAN,
TOWN OF PARKER, COUNTY OF DOUGLAS, STATE OF COLORADO
7.69 ACRES, 33 RESIDENTIAL LOTS



PRELIMINARY NOT FOR
BIDDING OR CONSTRUCTION



Prepared For
CENTURY LAND HOLDINGS, LLC
8390 EAST CRESCENT PKWY
SUITE 650
GREENWOOD VILLAGE, CO 80111
(303) 770-8300

MPi Designs
PO BOX 369 • AULT, CO • 80610
970-402-3047
Michelle@MPiDesignsllc.com

Civil Engineering

MERRICK & COMPANY
5970 GREENWOOD PLAZA BLVD,
GREENWOOD VILLAGE, CO 80111
303.353.3695

**COMPARK VILLAGE SOUTH
IRRIGATION PLANS**

PARKER, CO

Stamp:

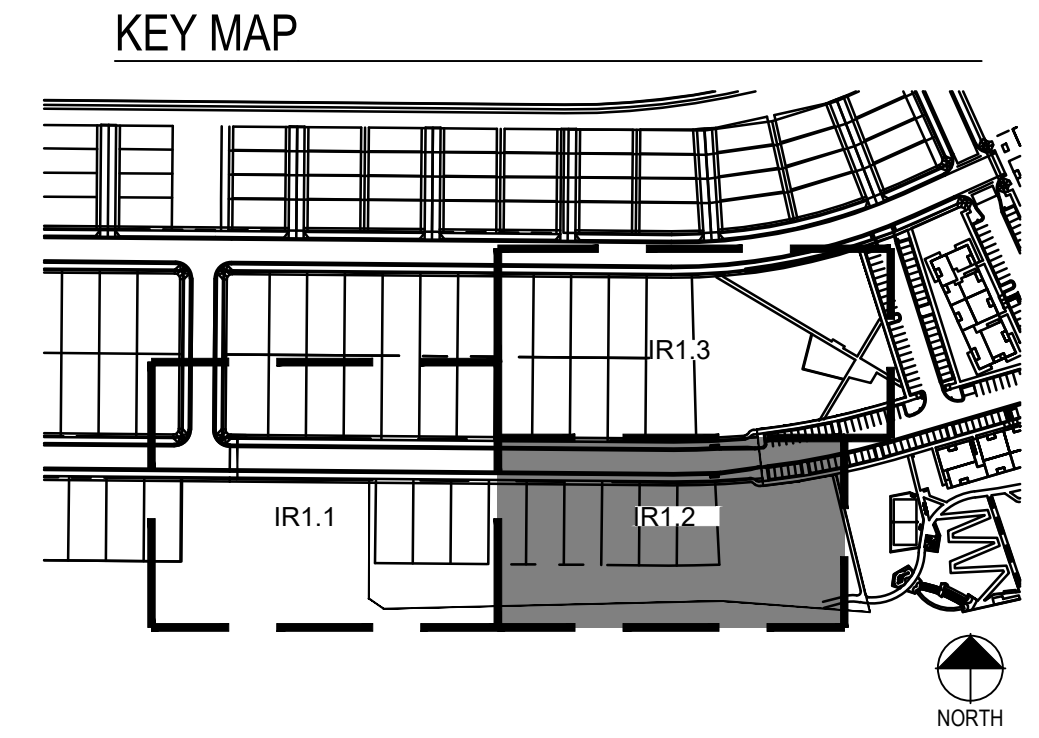
Drawn by:
MLP
Checked by:
MLP
Issue Date:
04/22/2022
Issued For:
TOWN OF PARKER

Date	Revisions
11-08-22	TOWN OF PARKER REVIEW
02-10-23	FOR CONSTRUCTION

Sheet Name
IRRIGATION PLAN
Sheet Number
10 of 14

COMPARK VILLAGE SOUTH FINAL PLAT

A PARCEL OF LAND LOCATED IN A PORTION OF THE SE OF SECTION 6, TOWNSHIP 6 SOUTH,
RANGE 66 WEST OF THE SIXTH PRINCIPAL MERIDIAN,
TOWN OF PARKER, COUNTY OF DOUGLAS, STATE OF COLORADO
7.69 ACRES, 33 RESIDENTIAL LOTS



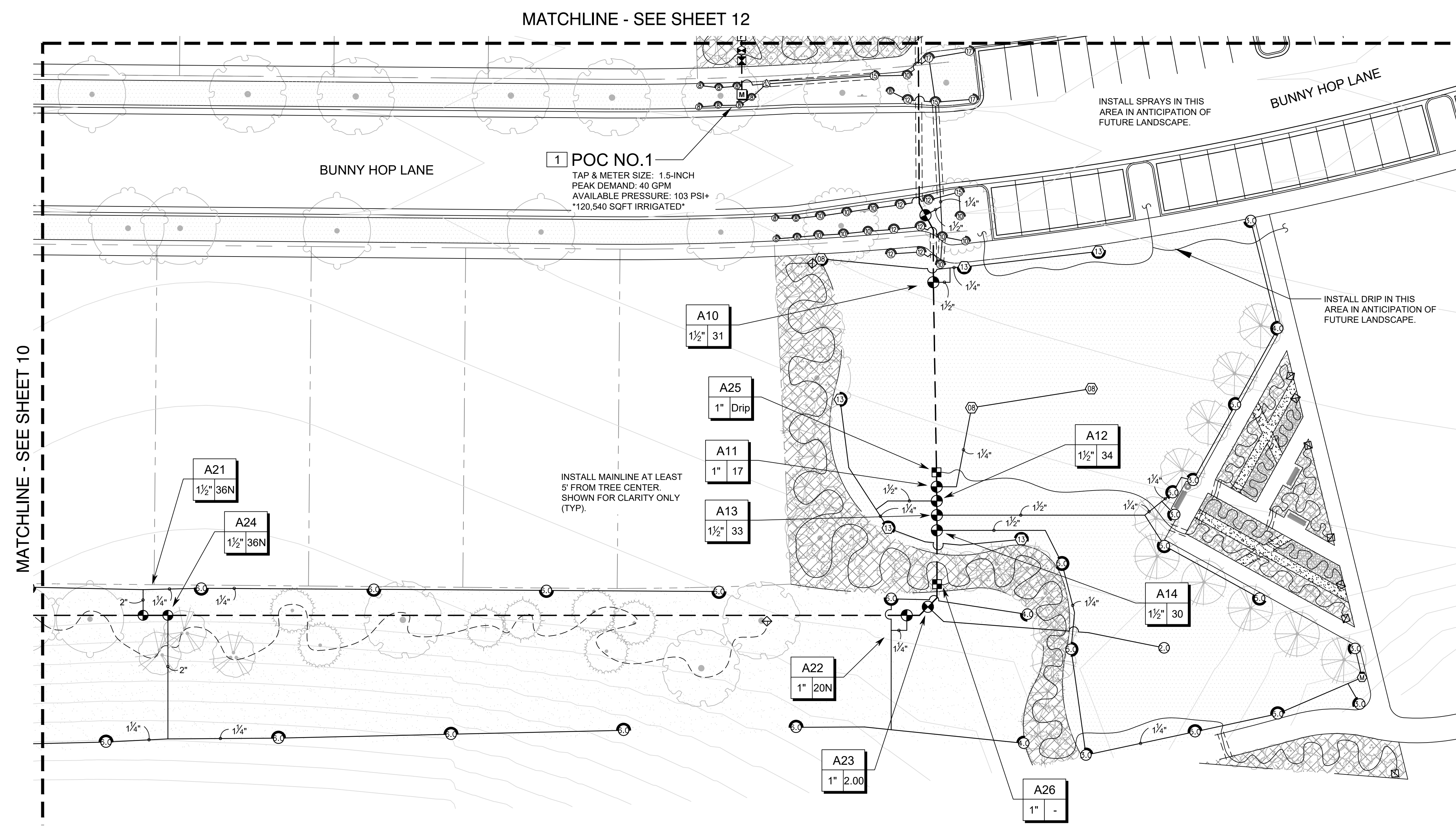
Prepared For
CENTURY LAND HOLDINGS, LLC
8390 EAST CRESCENT PKWY
SUITE 650
GREENWOOD VILLAGE, CO 80111
(303) 770-8300

Irrigation Design

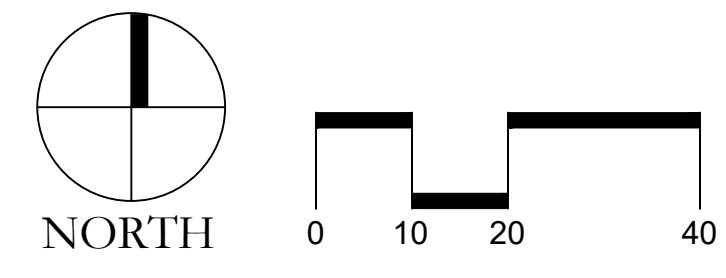
MPi Designs
PO BOX 369 • AULT, CO • 80610
970-402-3047
Michelle@MPiDesignsllc.com

Civil Engineering

MERRICK & COMPANY
5970 GREENWOOD PLAZA BLVD,
GREENWOOD VILLAGE, CO 80111
303.353.3695



PRELIMINARY NOT FOR BIDDING OR CONSTRUCTION



COMPARK VILLAGE SOUTH IRRIGATION PLANS

PARKER, CO

Stamp:

Drawn by:
MLP
Checked by:
MLP
Issue Date:
04/22/2022
Issued For:
TOWN OF PARKER

Rev#	Revisions	Date
1	TOWN OF PARKER REVIEW	11-08-22
2	FOR CONSTRUCTION	02-10-23
3		
4		
5		
6		
7		
8		

Sheet Name
IRRIGATION PLAN

Sheet Number
11 of 14

COMPARK VILLAGE SOUTH FINAL PLAT

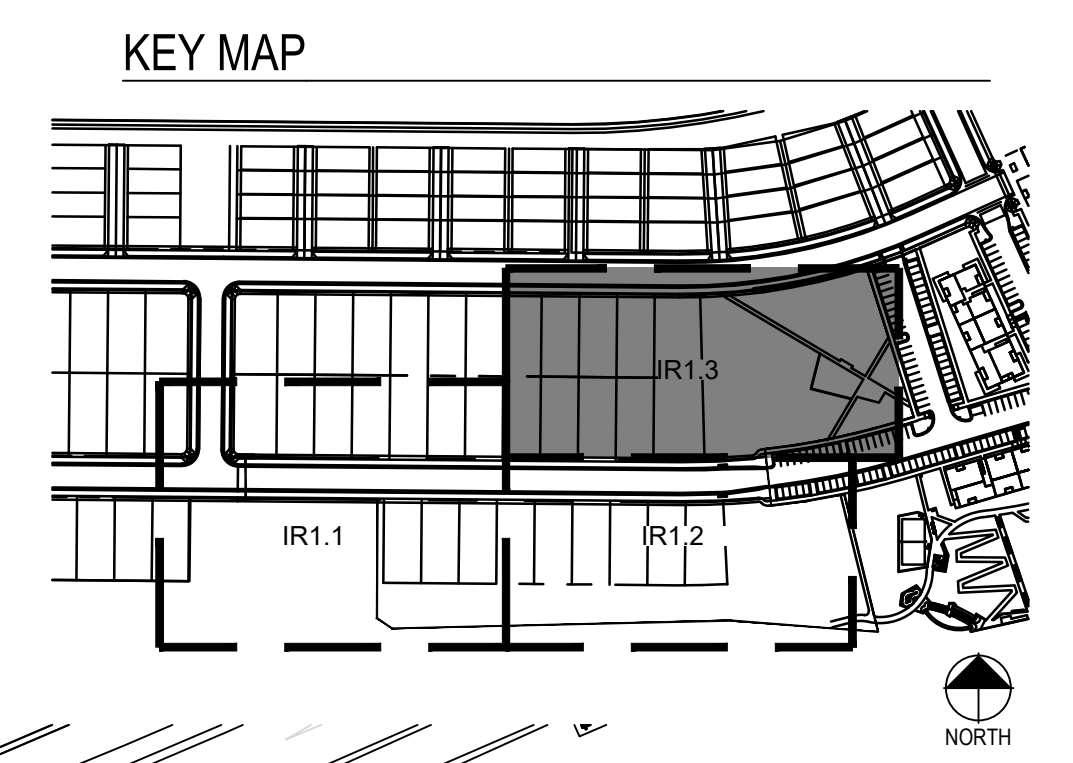
A PARCEL OF LAND LOCATED IN A PORTION OF THE SE OF SECTION 6, TOWNSHIP 6 SOUTH,
RANGE 66 WEST OF THE SIXTH PRINCIPAL MERIDIAN,
TOWN OF PARKER, COUNTY OF DOUGLAS, STATE OF COLORADO
7.69 ACRES, 33 RESIDENTIAL LOTS

Prepared For
CENTURY LAND HOLDINGS, LLC
8390 EAST CRESCENT PKWY
SUITE 650
GREENWOOD VILLAGE, CO 80111
(303) 770-8300

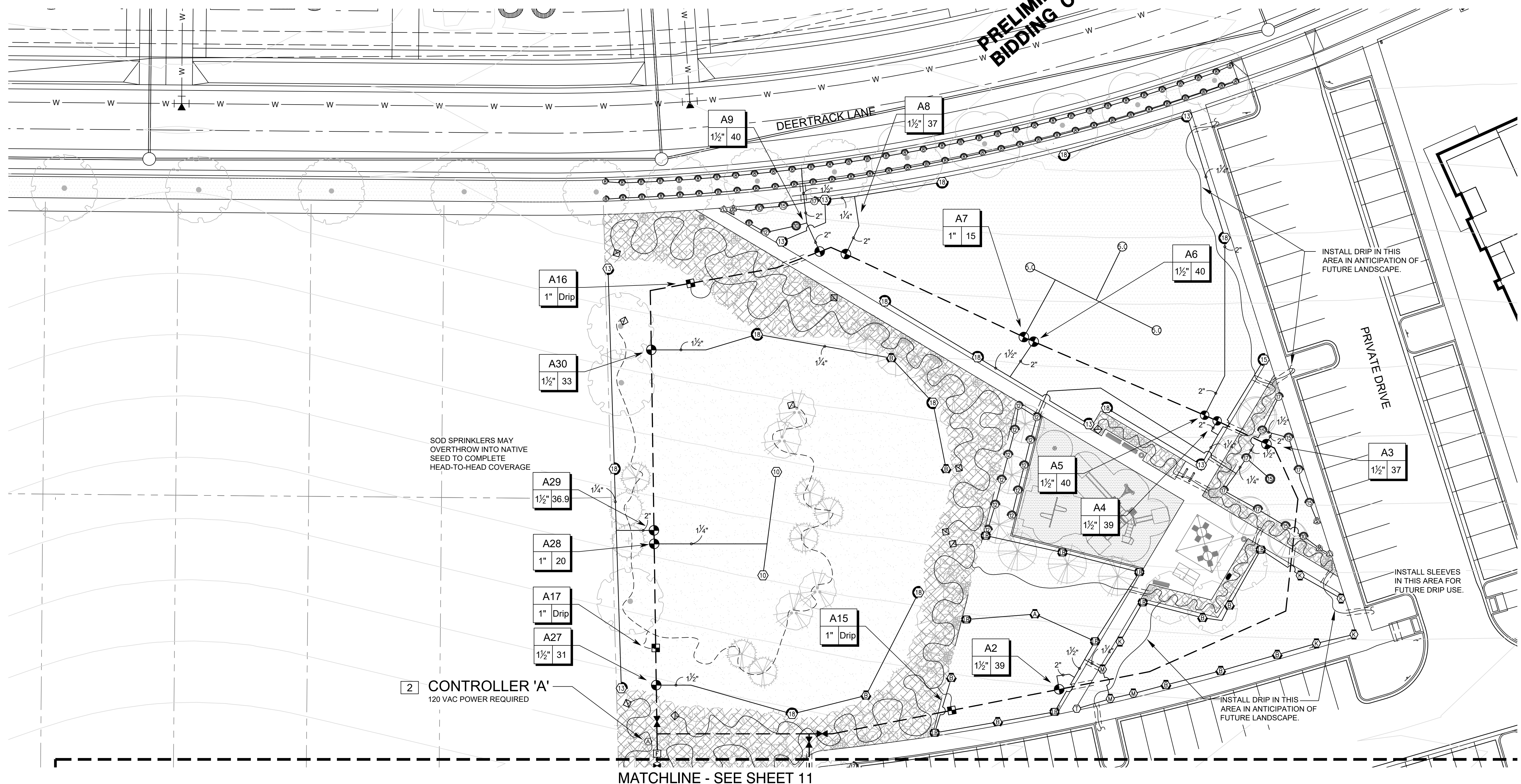
MPi Designs
PO BOX 369 • AULT, CO • 80610
970-402-3047
Michelle@MPiDesignsllc.com

Civil Engineering

MERRICK & COMPANY
5970 GREENWOOD PLAZA BLVD,
GREENWOOD VILLAGE, CO 80111
303.353.3695

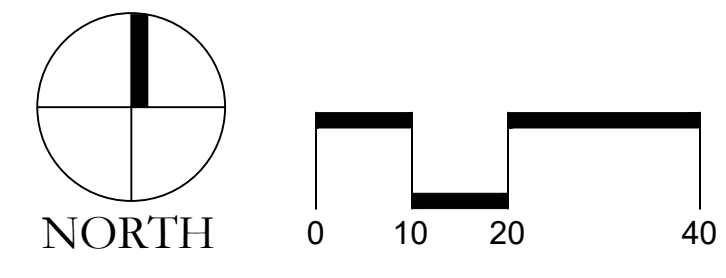


PRELIMINARY NOT FOR BIDDING OR CONSTRUCTION



2 CONTROLLER 'A'
120 VAC POWER REQUIRED

MATCHLINE - SEE SHEET 11



COMPARK VILLAGE SOUTH IRRIGATION PLANS

PARKER, CO

Stamp:

Drawn by:
MLP
Checked by:
MLP
Issue Date:
04/22/2022
Issued For:
TOWN OF PARKER

Rev#	Revisions	Date
1	TOWN OF PARKER REVIEW	11-08-22
2	FOR CONSTRUCTION	02-10-23
3		
4		
5		
6		
7		
8		

Sheet Name
IRRIGATION PLAN

Sheet Number
12 of 14

COMPARK VILLAGE SOUTH FINAL PLAT

A PARCEL OF LAND LOCATED IN A PORTION OF THE SE OF SECTION 6, TOWNSHIP 6 SOUTH,
RANGE 66 WEST OF THE SIXTH PRINCIPAL MERIDIAN,
TOWN OF PARKER, COUNTY OF DOUGLAS, STATE OF COLORADO
7.69 ACRES, 33 RESIDENTIAL LOTS

■ Prepared For ■
CENTURY LAND HOLDINGS, LLC
8390 EAST CRESCENT PKWY
SUITE 650
GREENWOOD VILLAGE, CO 80111
(303) 770-8300

■ Irrigation Design ■

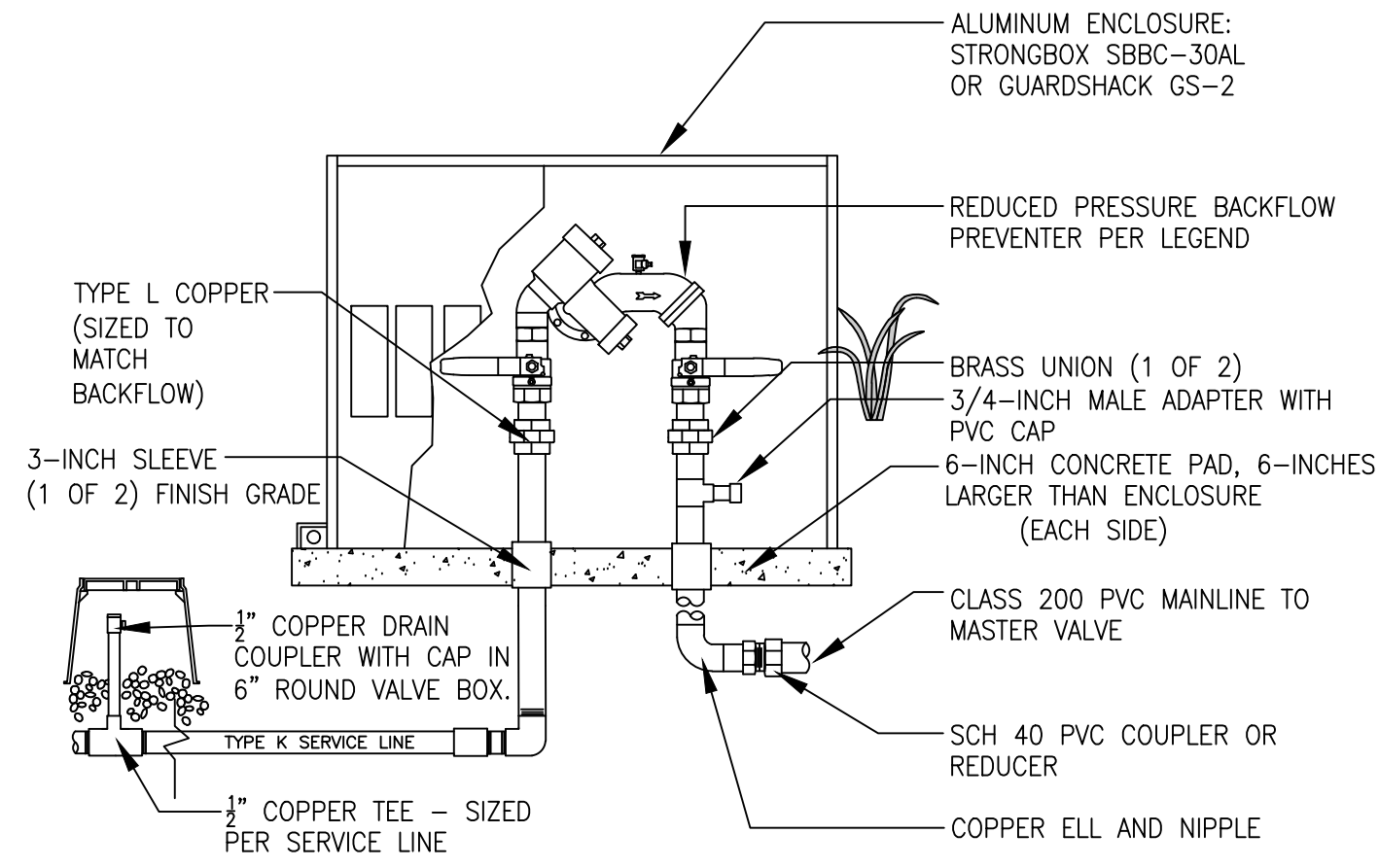
MPi Designs
PO BOX 369 • AULT, CO • 80610
970-402-3047
Michelle@MPiDesignsllc.com

■ Civil Engineering ■

MERRICK & COMPANY
5970 GREENWOOD PLAZA BLVD,
GREENWOOD VILLAGE, CO 80111
303.353.3695

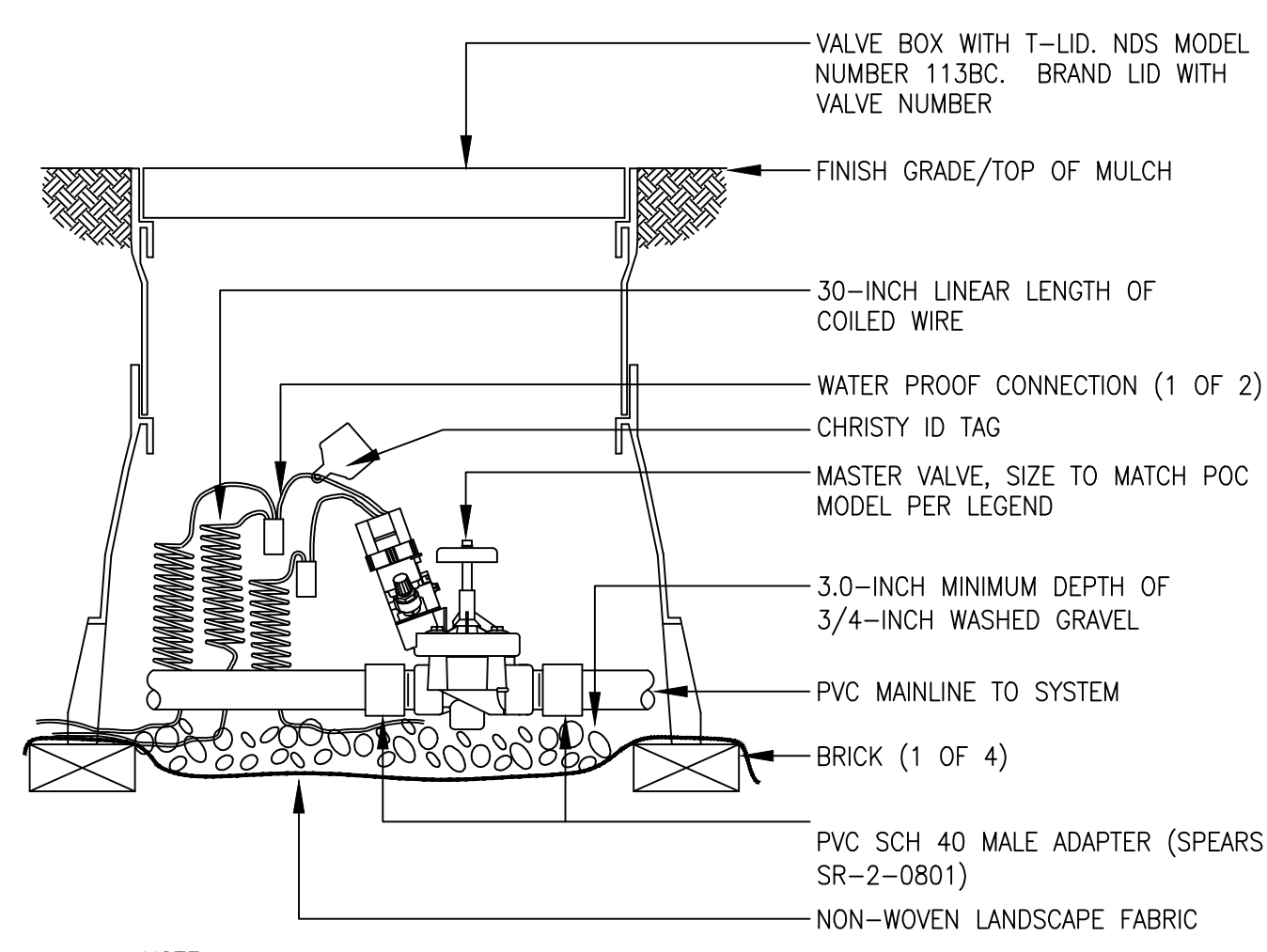
COMPARK VILLAGE SOUTH
IRRIGATION PLANS

PARKER, CO



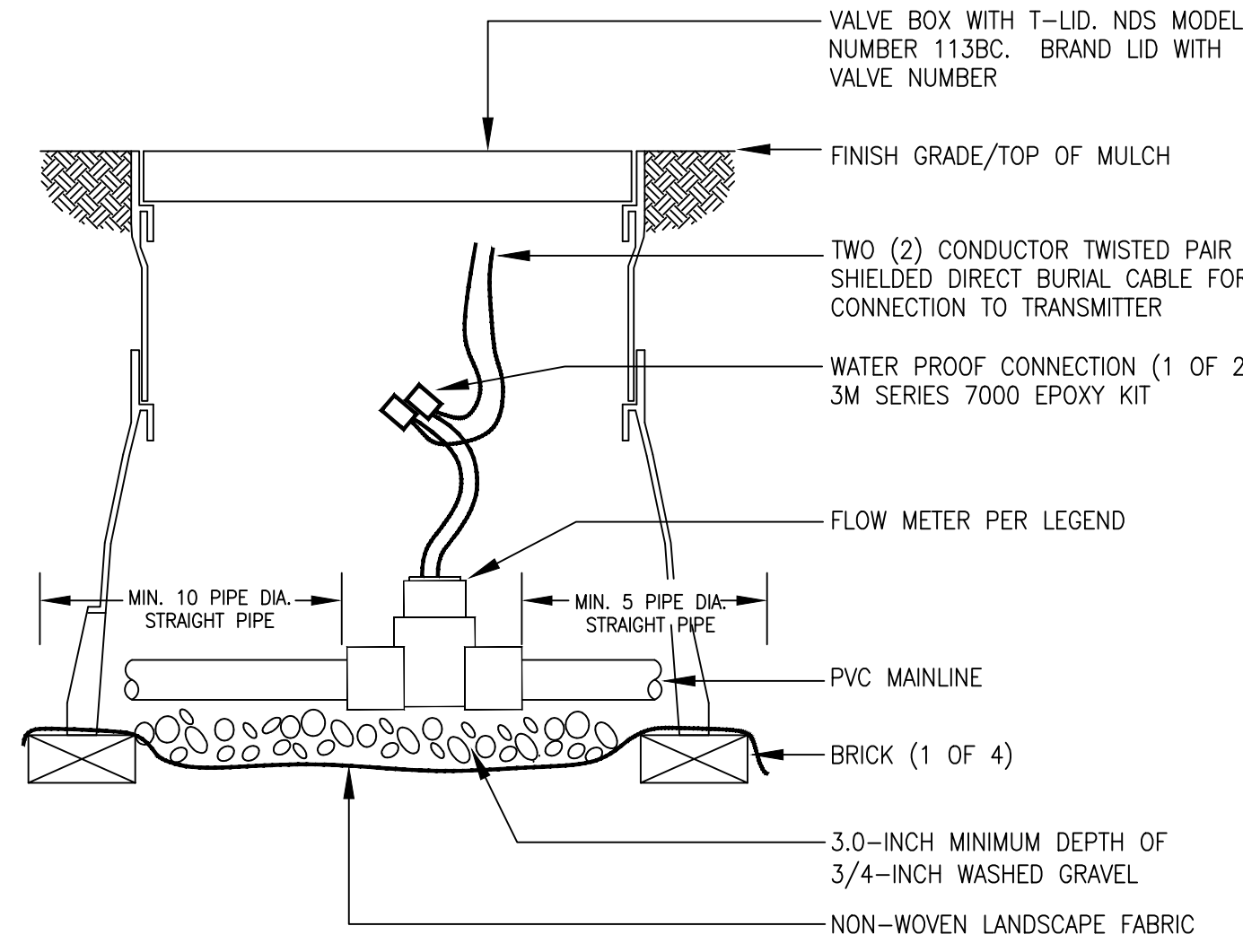
- NOTES:
1. INSTALL BACKFLOW DEVICE IN ACCORDANCE WITH ALL STATE AND LOCAL CODE REQUIREMENTS.
 2. SLOPE TOP SURFACE OF PAD AT 0.5 % WITH BROOM FINISH. MAKE PIPE SLEEVES WITH 1-1/2 INCH LARGER DIAMETER PIPE THAN PENETRATING PIPE SIZE.
 3. ALL HINGED CONNECTION LOCATIONS AND HARDWARE TO BE TAMPER PROOF.
 4. ALL WELD JOINTS SHALL BE CONTINUOUS AND GROUND SMOOTH.

1 BACKFLOW PREVENTION UNIT

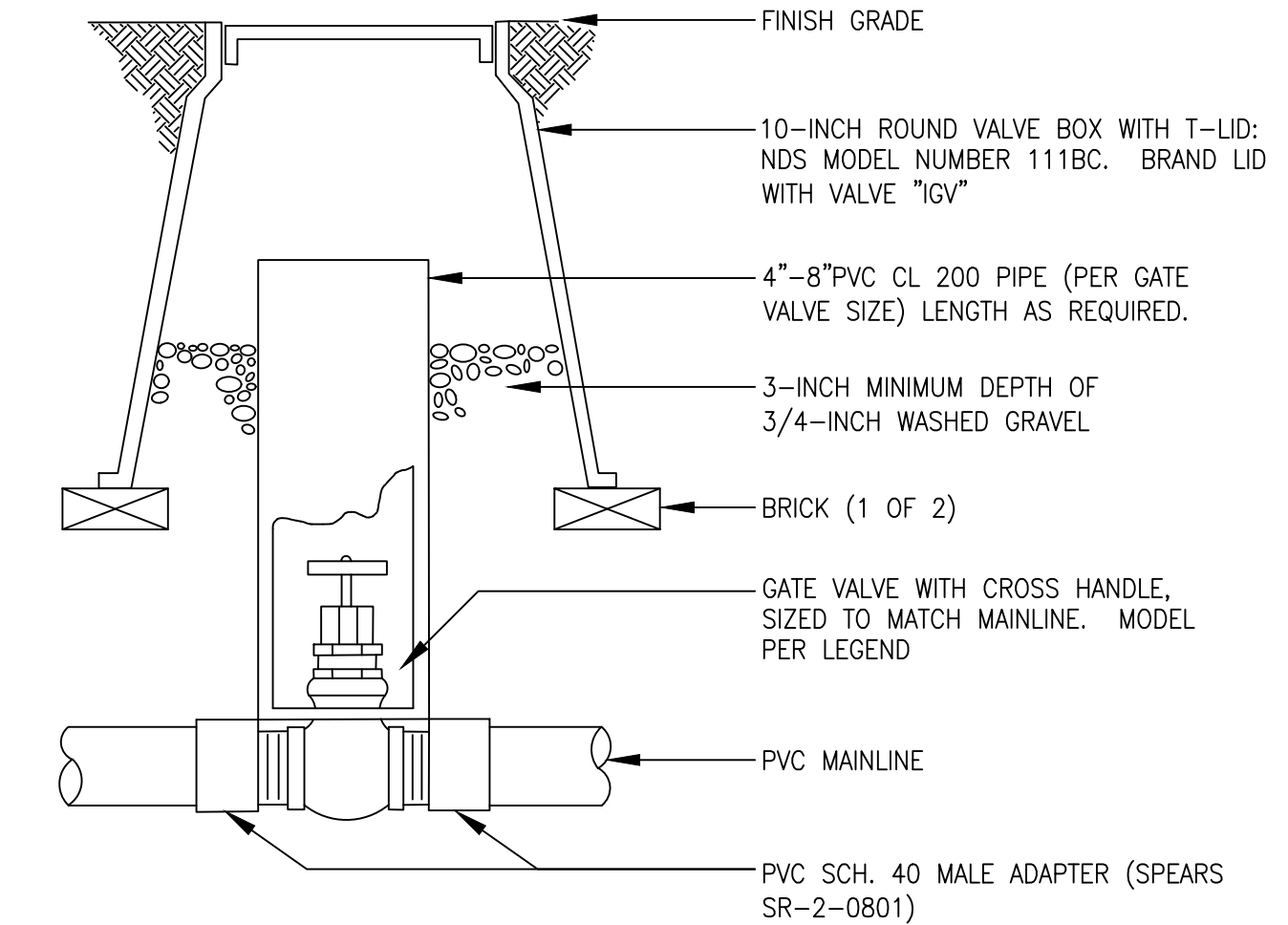


- NOTE:
1. FOR 2-WIRE CONTROL SYSTEMS, DIRECT WIRE MASTER VALVE INTO MV SENSOR PORT. DECODER IS AN OPTIONAL CONNECTION.

2 MASTER VALVE ASSEMBLY

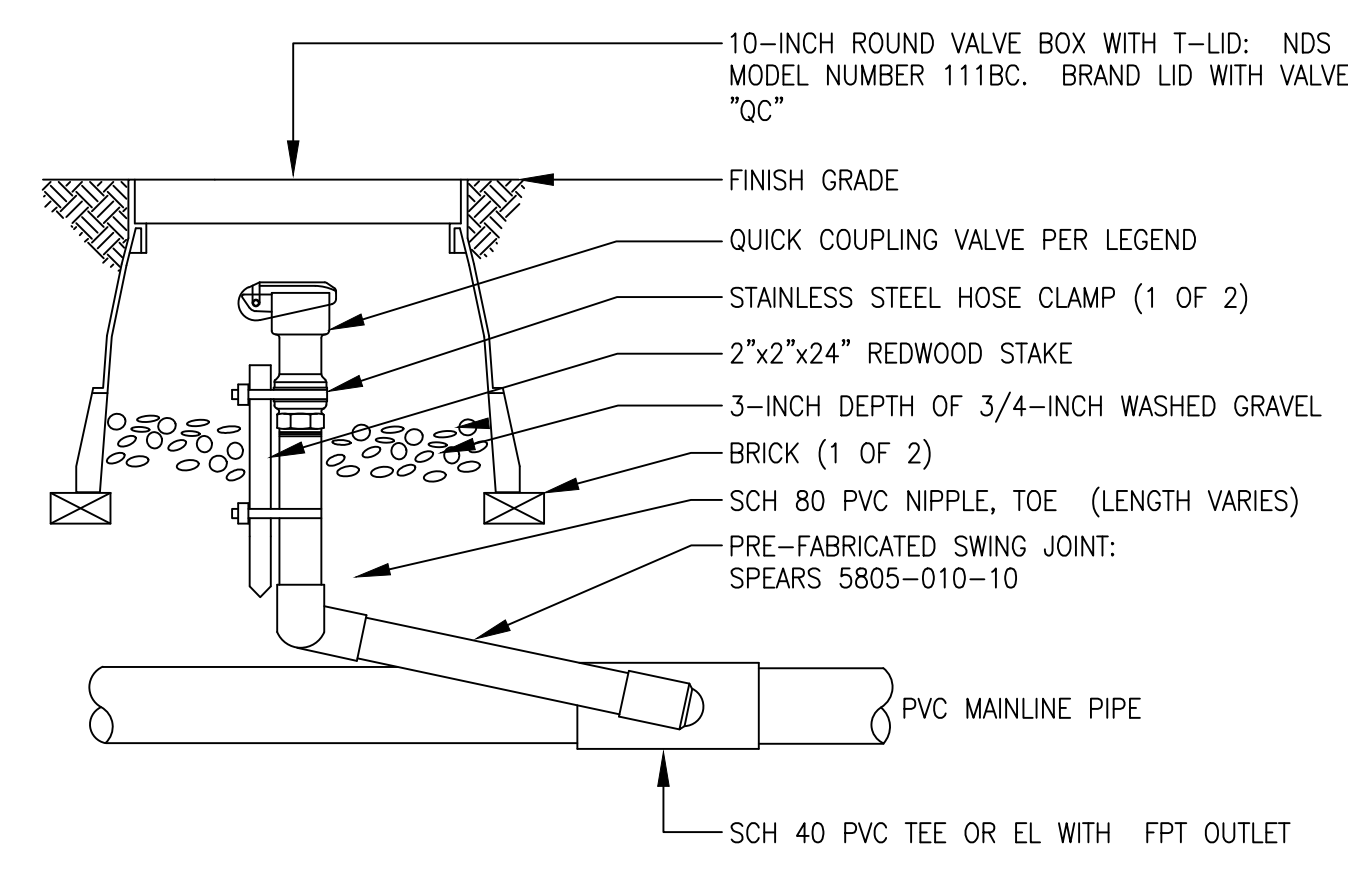


3 FLOW SENSOR ASSEMBLY

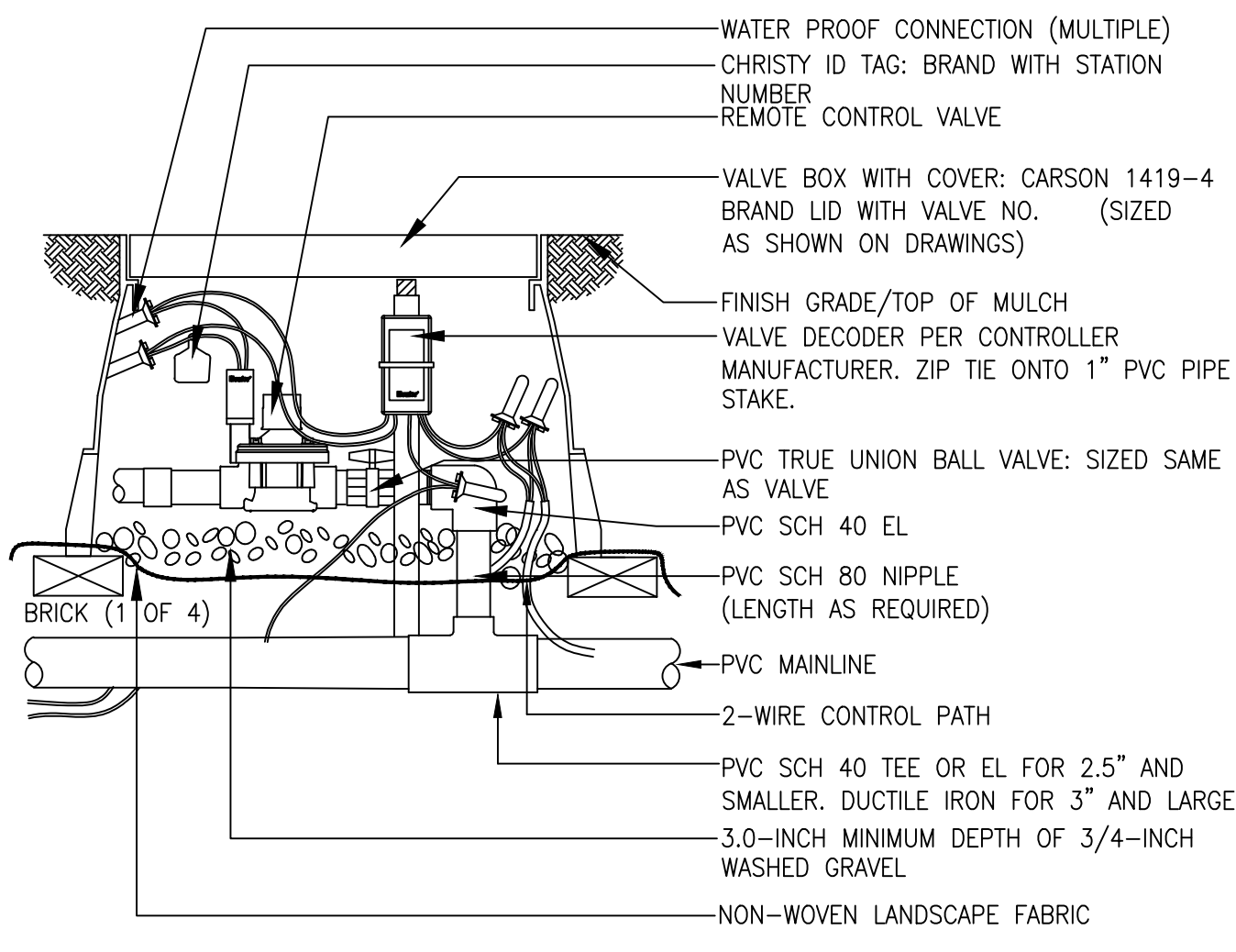


- NOTES:
1. NOMINAL SIZE OF GATE VALVE TO MATCH NOMINAL MAINLINE SIZE.

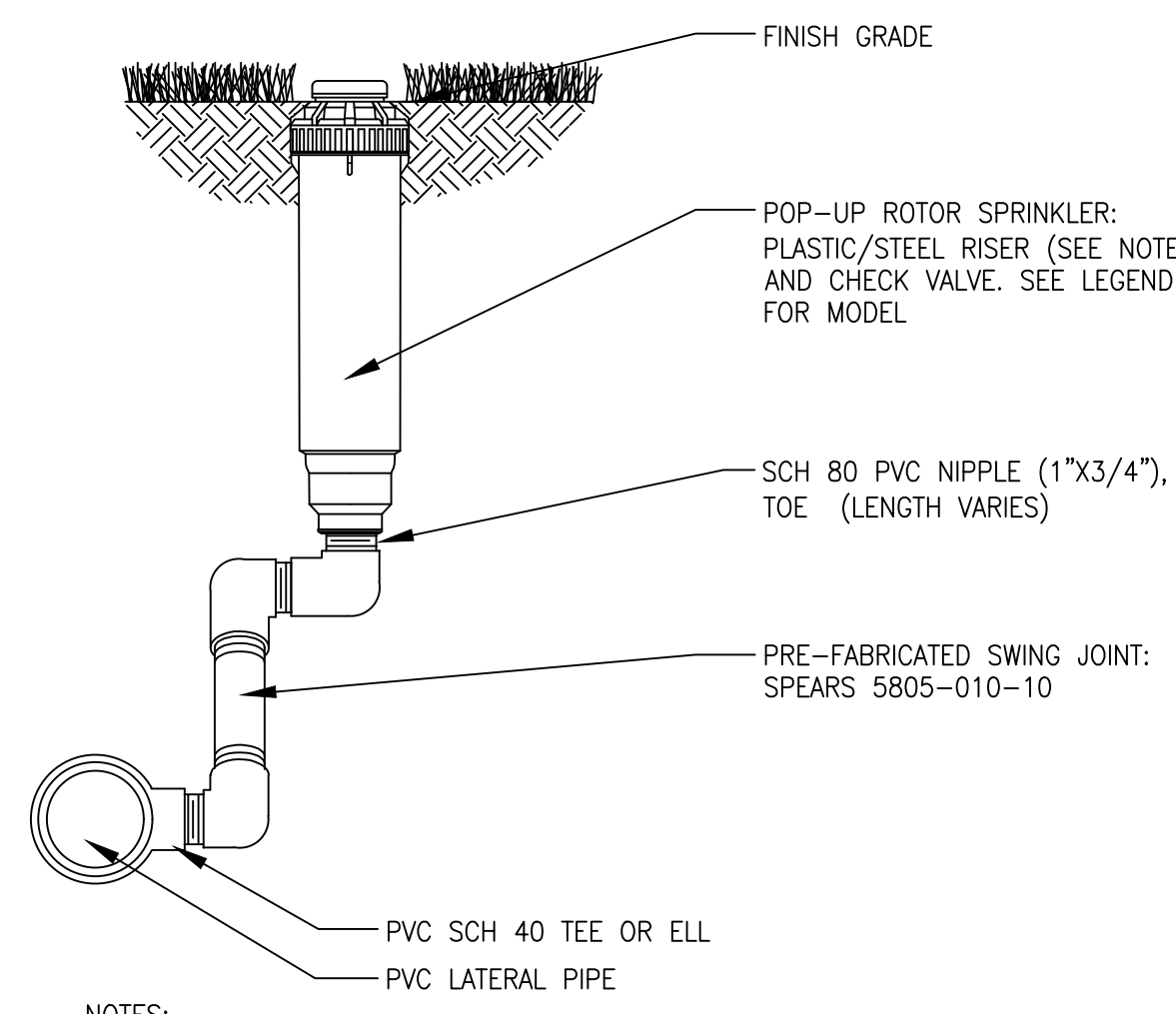
4 ISOLATION GATE VALVE ASSEMBLY



5 QUICK COUPLING VALVE ASSEMBLY

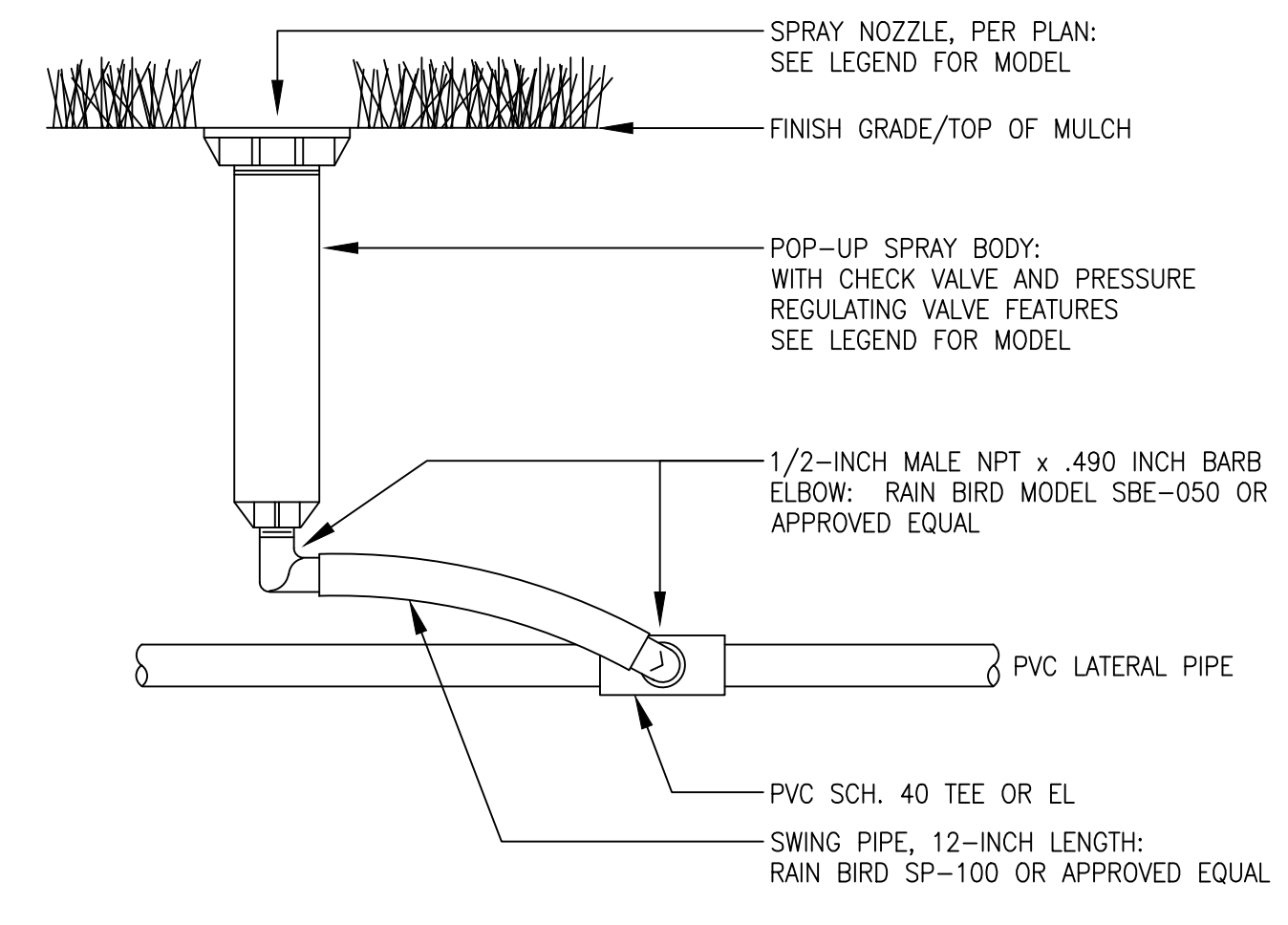


6 REMOTE CONTROL TURF VALVE ASSEMBLY



- NOTES:
1. INSTALL PLASTIC RISERS FOR ROTORS IN NATIVE AREAS.

7 6-INCH GEAR-DRIVEN ROTOR ASSEMBLY



- NOTES:
1. UTILIZE 40 PSI PRESSURE REGULATING STEM FOR HEADS WITH ROTARY NOZZLES.
 2. UTILIZE 30 PSI PRESSURE REGULATING STEM FOR HEADS WITH SPRAY NOZZLES.

8 6-INCH POP-UP SPRAY SPRINKLER ASSEMBLY

PRELIMINARY NOT FOR BIDDING OR CONSTRUCTION

Stamp:

Drawn by:
MLP
Checked by:
MLP
Issue Date:
04/22/2022
Issued For:
TOWN OF PARKER

Rev#	Date	Revisions
1	11-08-22	TOWN OF PARKER REVIEW
2	02-10-23	FOR CONSTRUCTION
3		
4		
5		
6		
7		
8		

■ Sheet Name ■
IRRIGATION DETAILS
■ Sheet Number ■

COMPARK VILLAGE SOUTH FINAL PLAT

A PARCEL OF LAND LOCATED IN A PORTION OF THE SE OF SECTION 6, TOWNSHIP 6 SOUTH,
RANGE 66 WEST OF THE SIXTH PRINCIPAL MERIDIAN,
TOWN OF PARKER, COUNTY OF DOUGLAS, STATE OF COLORADO
7.69 ACRES, 33 RESIDENTIAL LOTS

PRELIMINARY NOT FOR
BIDDING OR CONSTRUCTION

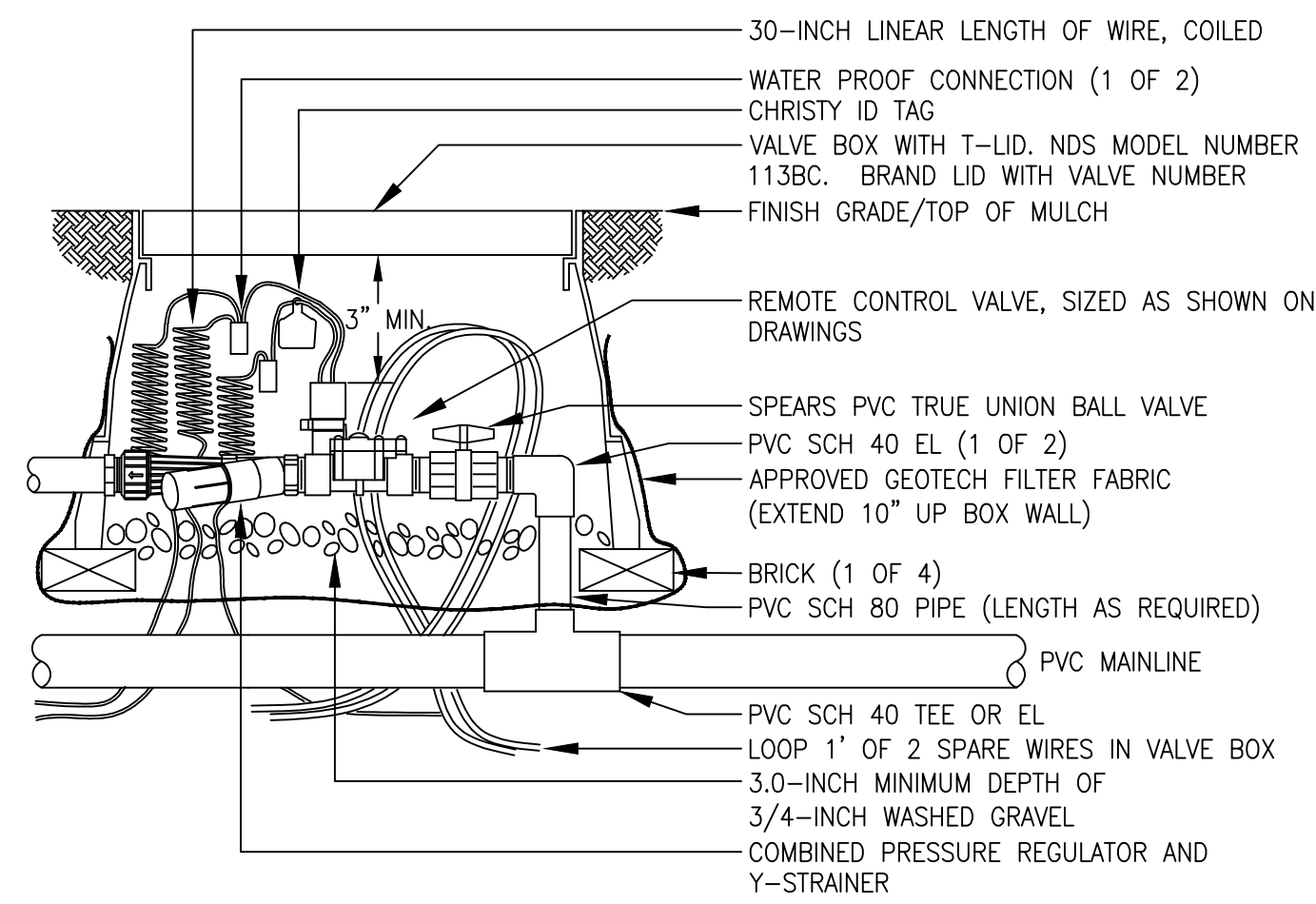
■ Prepared For ■
CENTURY LAND HOLDINGS, LLC
8390 EAST CRESCENT PKWY
SUITE 650
GREENWOOD VILLAGE, CO 80111
(303) 770-8300
■ Irrigation Design ■
MPi Designs
PO BOX 369 • AULT, CO • 80610
970-402-3047
Michelle@MPiDesignsllc.com

■ Civil Engineering ■

MERRICK & COMPANY
5970 GREENWOOD PLAZA BLVD,
GREENWOOD VILLAGE, CO 80111
303.353.3695

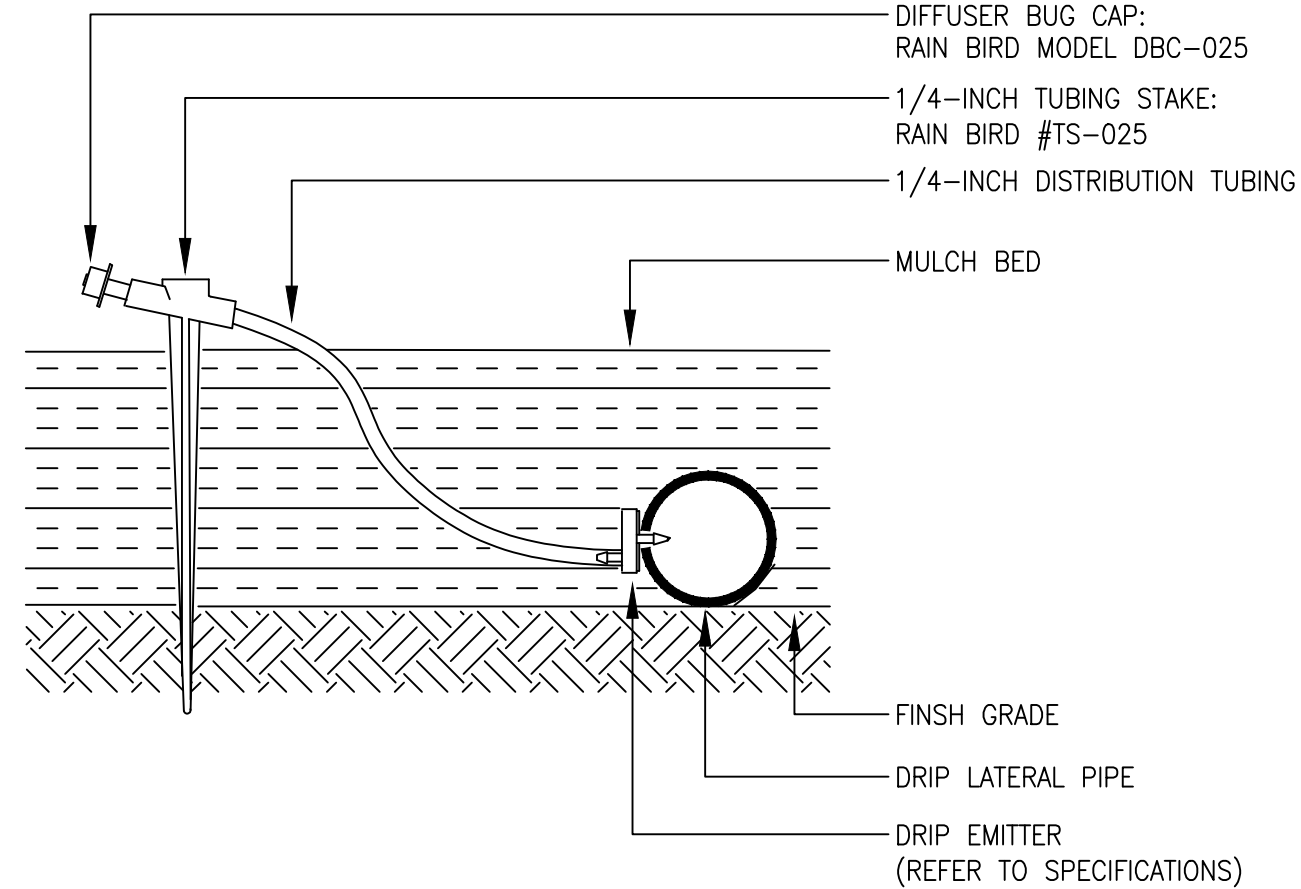
COMPARK VILLAGE SOUTH
IRRIGATION PLANS

PARKER, CO

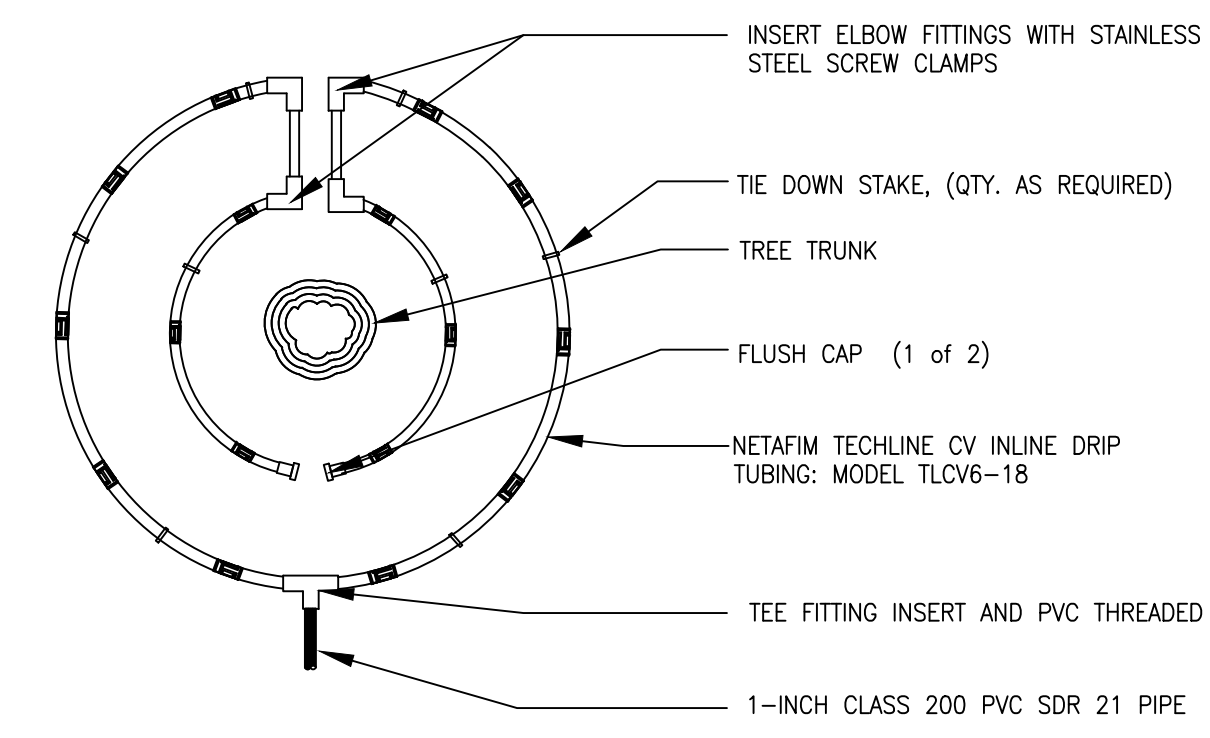


- NOTE:
1. USE BARBED INSERT FITTINGS ON DRIP LATERAL PIPE WITH HOSE CLAMPS. PLACE CLAMPS ON DRIP TUBING DIRECTLY OVER BARBED AREA OF FITTING. PINCH CLAMPS ARE NOT ACCEPTABLE.
2. UTILIZE RAIN BIRF XCZ-LF-100-PRF FOR FLOWS LESS THAN 5 GPM.

9 REMOTE CONTROL DRIP VALVE ASSEMBLY

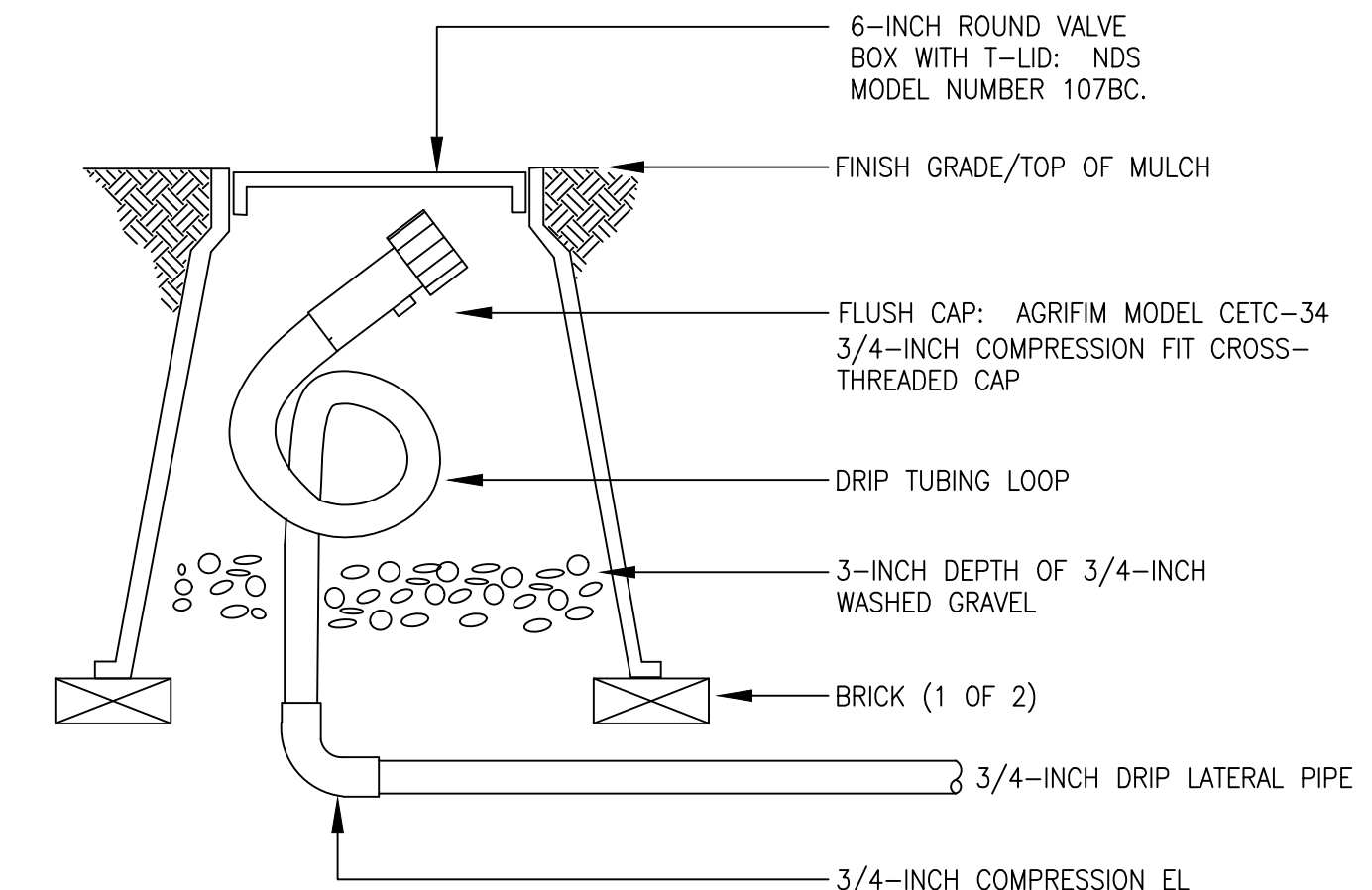


10 SINGLE OUTLET EMITTER ASSEMBLY



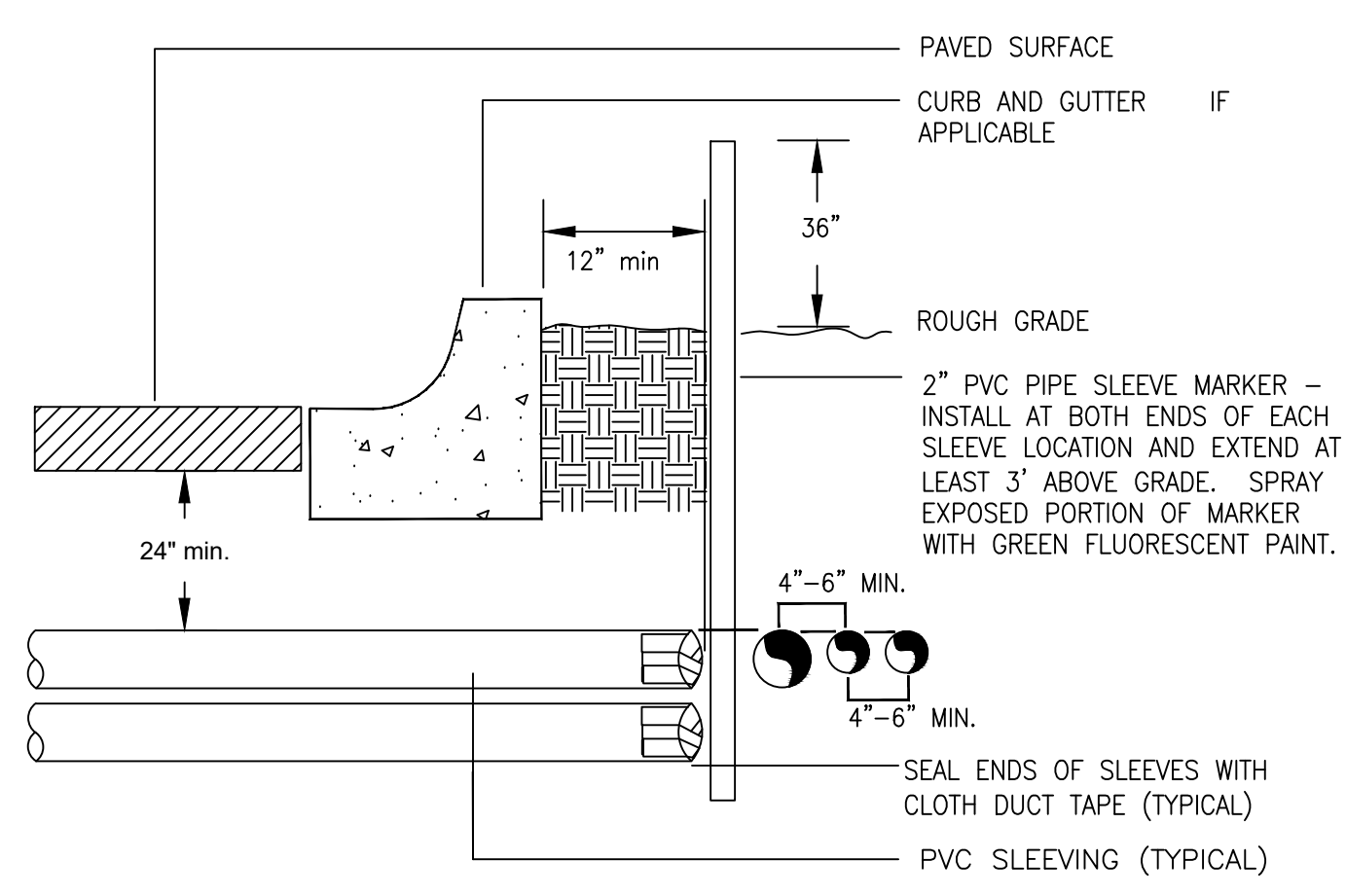
- NOTE:
1. CONTRACTOR SHALL INSTALL ALL DRIP TUBING IN NATIVE AREAS 2-3" BELOW GRADE IF MULCH IS NOT PRESENT. IF MULCH IS PRESENT, LAY TUBING ON FINISHED GRADE BELOW MULCH.
2. DIAMETER OF DRIP LINE RINGS ARE DEPENDENT ON TREE CANOPY SIZE AND SHALL BE ADJUSTED IN THE FIELD PER CONTRACTOR. SUGGESTED PLACEMENT OF 2' DIAMETER AND 3' DIAMETER AROUND TREE.
3. SHRUBS IN NATIVE SHALL UTILIZE SINGLE OUTLET EMITTERS.

11 INLINE DRIP PIPE ASSEMBLY FOR TREES IN NATIVE



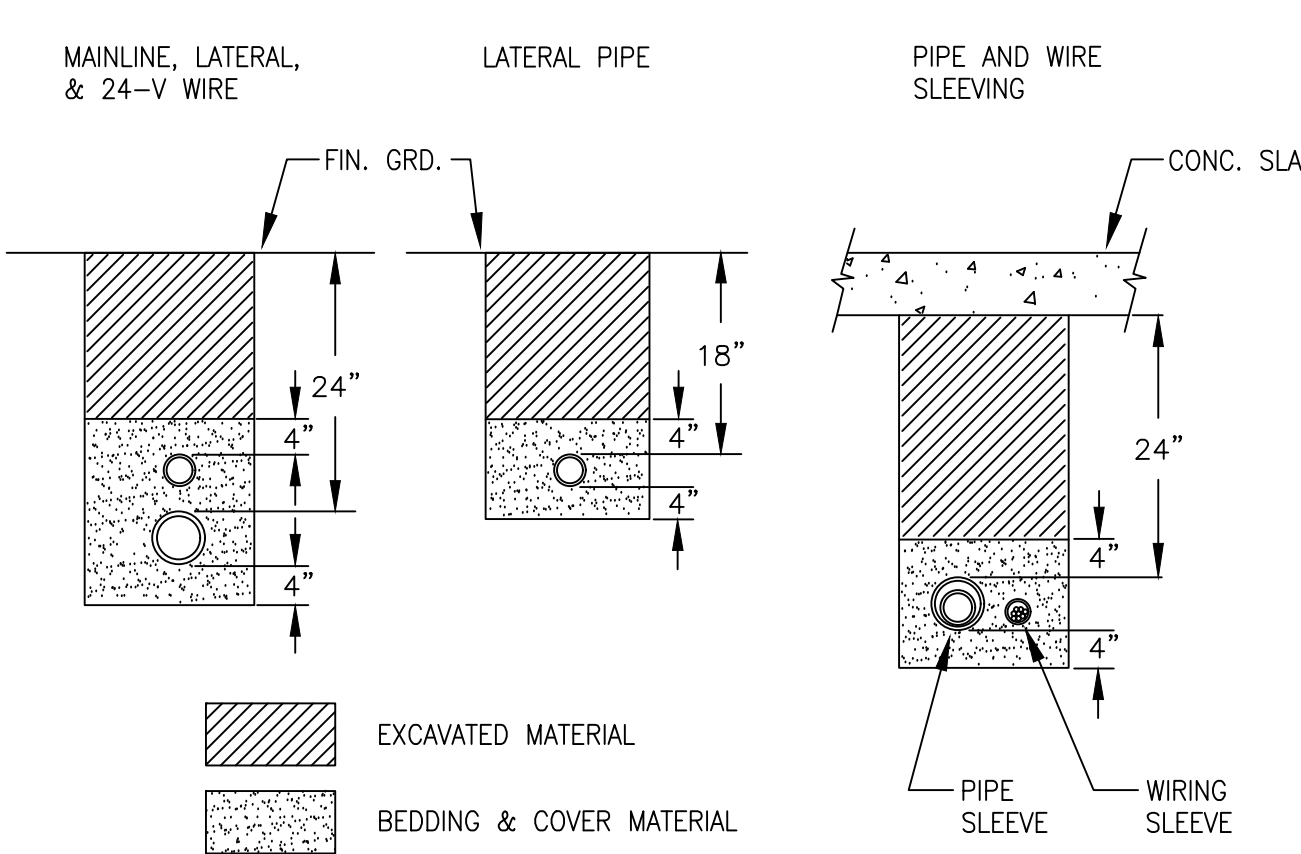
- NOTE:
1. LOOP IRRIGATION DRIP TUBING INSIDE VALVE BOX FOR EXTENSION OUTSIDE OF BOX DURING BLOWOUT.

12 DRIP FLUSH CAP ASSEMBLY



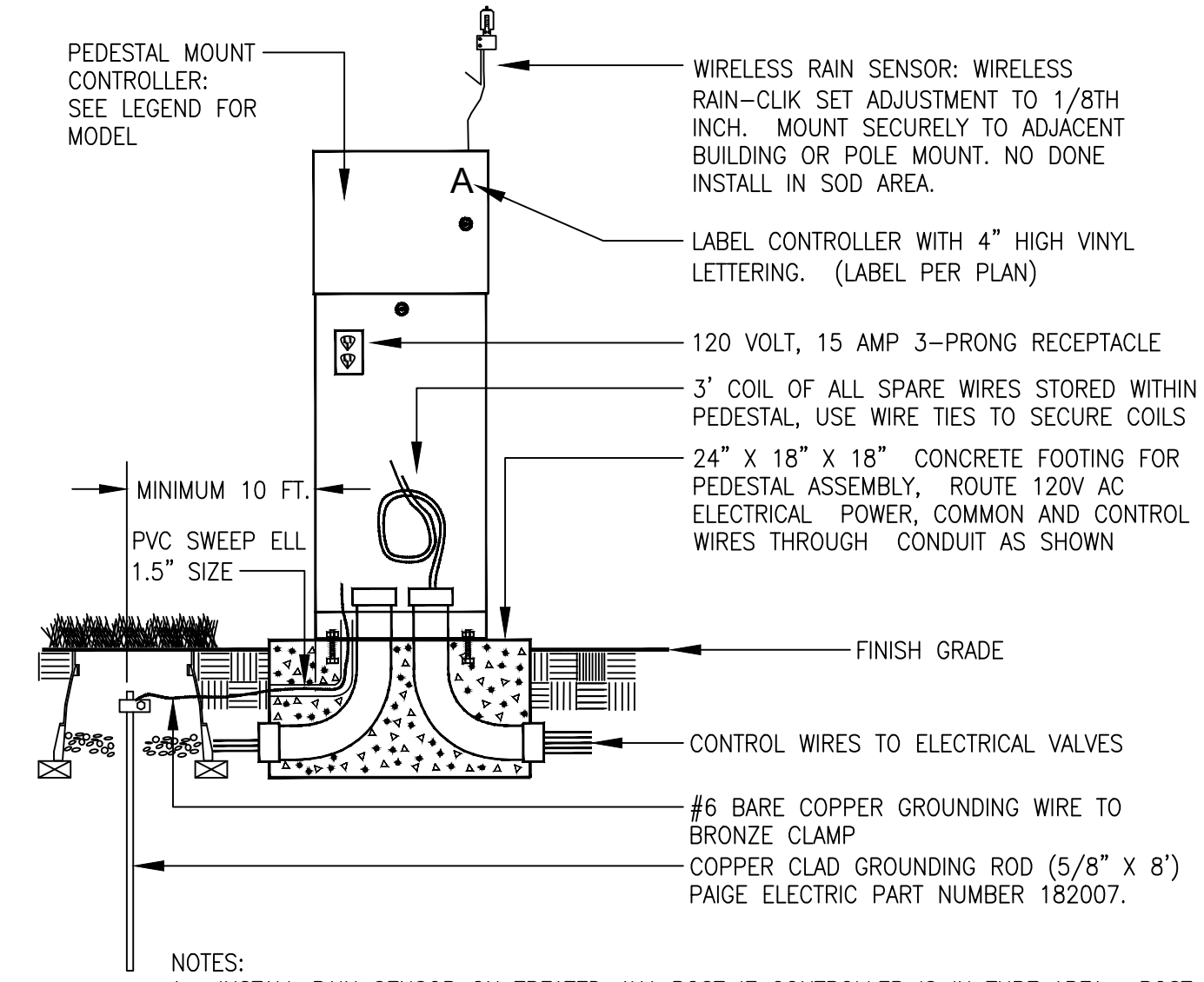
- NOTE:
1) ALL SLEEVING TO BE CLASS 200 BE PVC, SIZED AS NOTED.
2) INSTALL SLEEVES IN SIDE-BY-SIDE CONFIGURATION WHERE MULTIPLE SLEEVES ARE TO BE INSTALLED. SPACE SLEEVES 4" TO 6" APART. DO NOT STACK SLEEVES VERTICALLY.

13 TYPICAL SLEEVING DETAIL



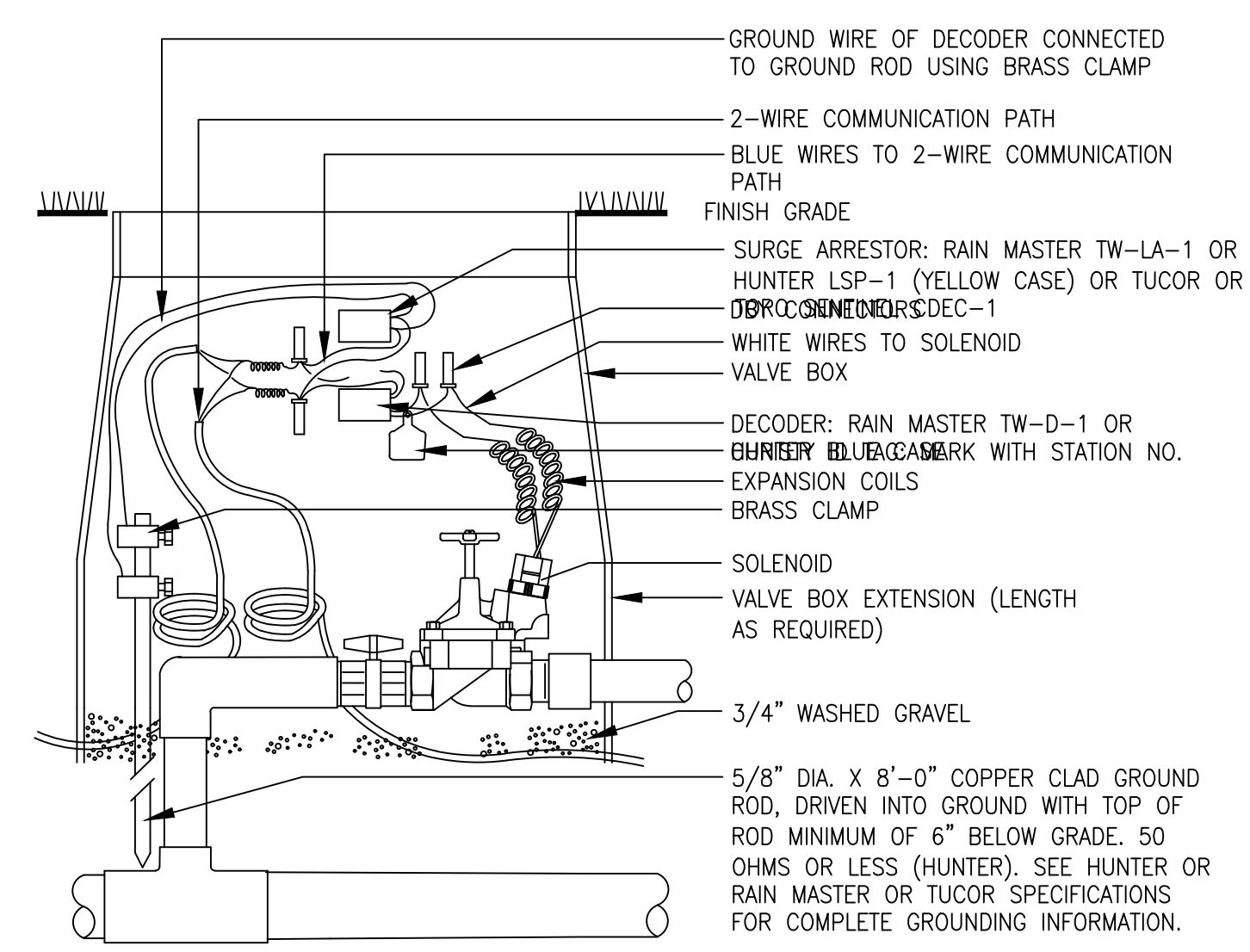
- NOTES:
1. SLEEVE ALL PIPE AND WIRE SEPARATELY.
2. ALL PIPE TO BE INSTALLED PER MANUFACTURER'S SPECIFICATIONS. "SNAKE" UNSLEEVED PLASTIC PIPE IN TRENCH. PROVIDE A MINIMUM OF 2" CLEARANCE TO SIDE OF TRENCH AND BETWEEN PIPES.
3. ALL 120-V WIRING SHALL BE INSTALLED IN ACCORDANCE WITH LOCAL CODE REQUIREMENTS. TAPE AND BUNDLE 24-V WIRE EVERY 10' AND PROVIDE LOOSE 20" LOOP AT ALL CHANGES OF DIRECTION OVER 30 DEGREES.

14 TYPICAL TRENCHING DETAIL



- NOTES:
1. INSTALL RAIN SENSOR ON TREATED 4X4 POST IF CONTROLLER IS IN TURF AREA. POST TO BE MOUNTED IN SHRUB BED TO AVOID BEING IRRIGATED BY OVERHEAD SPRINKLERS.

15 PEDESTAL MOUNT CONTROLLER ASSEMBLY



- NOTES: WIRES MUST EXTEND 12" ABOVE VALVE BOX FOR SERVICE.

16 TYPICAL GROUNDING (AT VALVE) ASSEMBLY

Stamp:

Drawn by:
MLP
Checked by:
MLP
Issue Date:
04/22/2022
Issued For:
TOWN OF PARKER

Rev#	Date	Revisions
1	11-08-22	TOWN OF PARKER REVIEW
2	02-10-23	FOR CONSTRUCTION
3		
4		
5		
6		
7		
8		

■ Sheet Name ■
**IRRIGATION
DETAILS**
■ Sheet Number ■