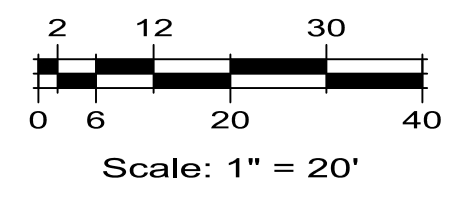


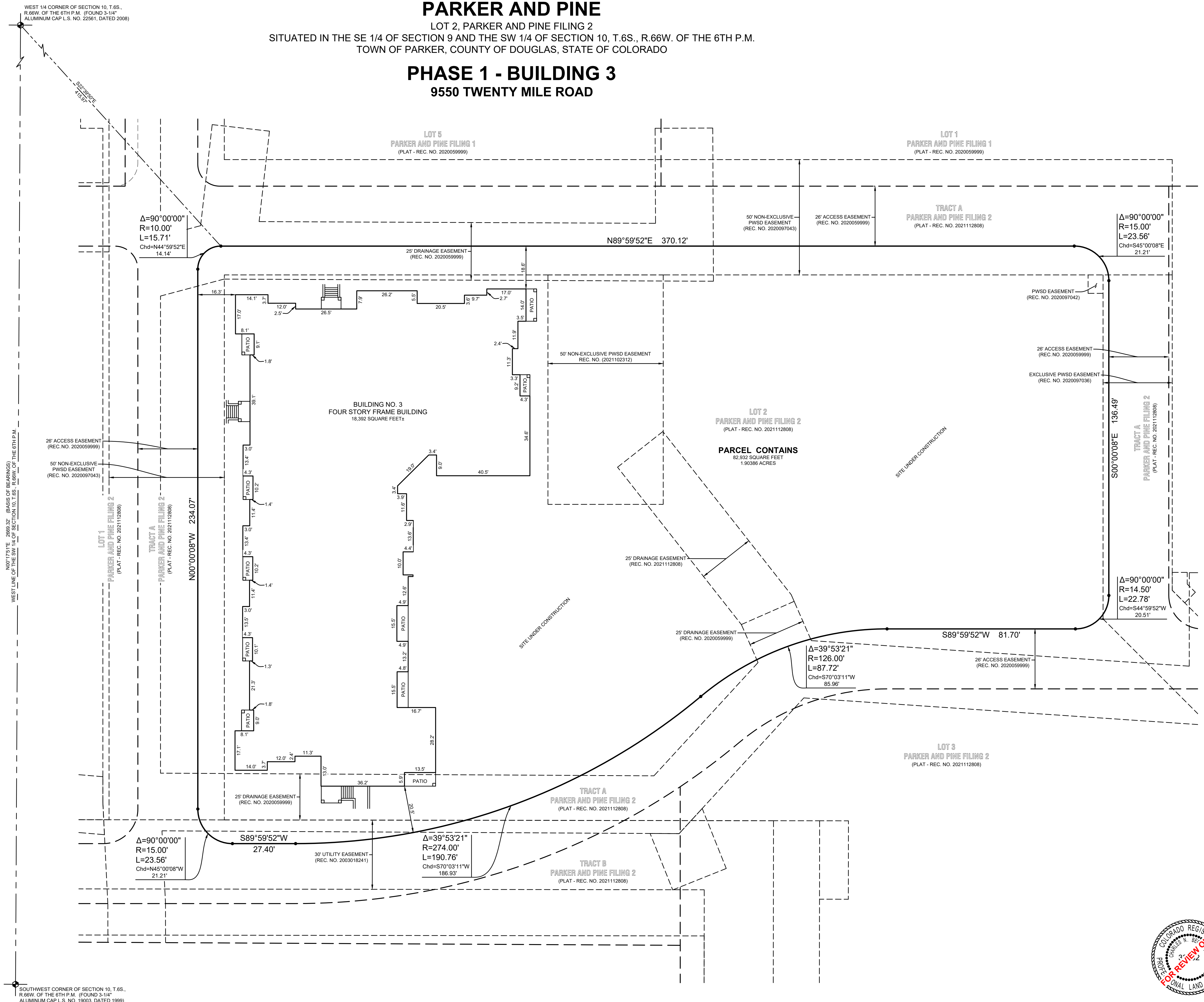
CONDOMINIUM MAP OF PARKER AND PINE

LOT 2, PARKER AND PINE FILING 2
SITUATED IN THE SE 1/4 OF SECTION 9 AND THE SW 1/4 OF SECTION 10, T.6S., R.66W. OF THE 6TH P.M.
TOWN OF PARKER, COUNTY OF DOUGLAS, STATE OF COLORADO

PHASE 1 - BUILDING 3 9550 TWENTY MILE ROAD



LEGEND	
REC. NO.	RECEPTION NUMBER
●	ALIQUOT CORNER
•	NO MONUMENT FOUND OR SET



WEST 1/4 CORNER OF SECTION 10, T.6S., R.66W. OF THE 6TH P.M. (FOUND 3-1/4" ALUMINUM CAP L.S. NO. 2261, DATED 2008)

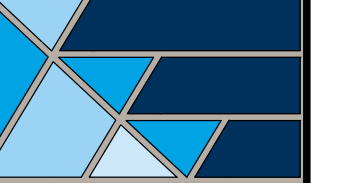
NORTH 1/4 CORNER OF SECTION 10, T.6S., R.66W. OF THE 6TH P.M.

SOUTHWEST CORNER OF SECTION 10, T.6S., R.66W. OF THE 6TH P.M. (FOUND 3-1/4" ALUMINUM CAP L.S. NO. 1903, DATED 1999)

Client:
THE GARRETT COMPANIES
10375 PARK MEADOWS DRIVE, SUITE 125
LONG TREE, COLORADO 80124
DATE: 10/23/23
ATTN: KARL STOUT

No.	Description	Date
1	INITIAL CONDO MAP SUBMITTAL	10/23/23

14190 East Evans Avenue
Aurora, Colorado 80014
ENGINEERING SERVICE COMPANY
P 303.337.1383
F 303.337.7481
Creative Solutions Since 1954
CIVIL ENGINEERS | LAND SURVEYORS



LIMITED IMPROVEMENT SURVEY
CONDOMINIUM MAP OF PARKER AND PINE - PHASE 1 BLDG 3
SITUATED IN THE SE 1/4 OF SECTION 9 AND THE SW 1/4 OF SECTION 10, T.6S., R.66W. OF THE 6TH P.M.
TOWN OF PARKER, COUNTY OF DOUGLAS, STATE OF COLORADO
9550 TWENTY MILE ROAD

ESC Team:	Date:
CNR, JDP	10/2/2023
Survey No.:	Scale:
23-025-CM	1" = 20'
Sheet No.:	

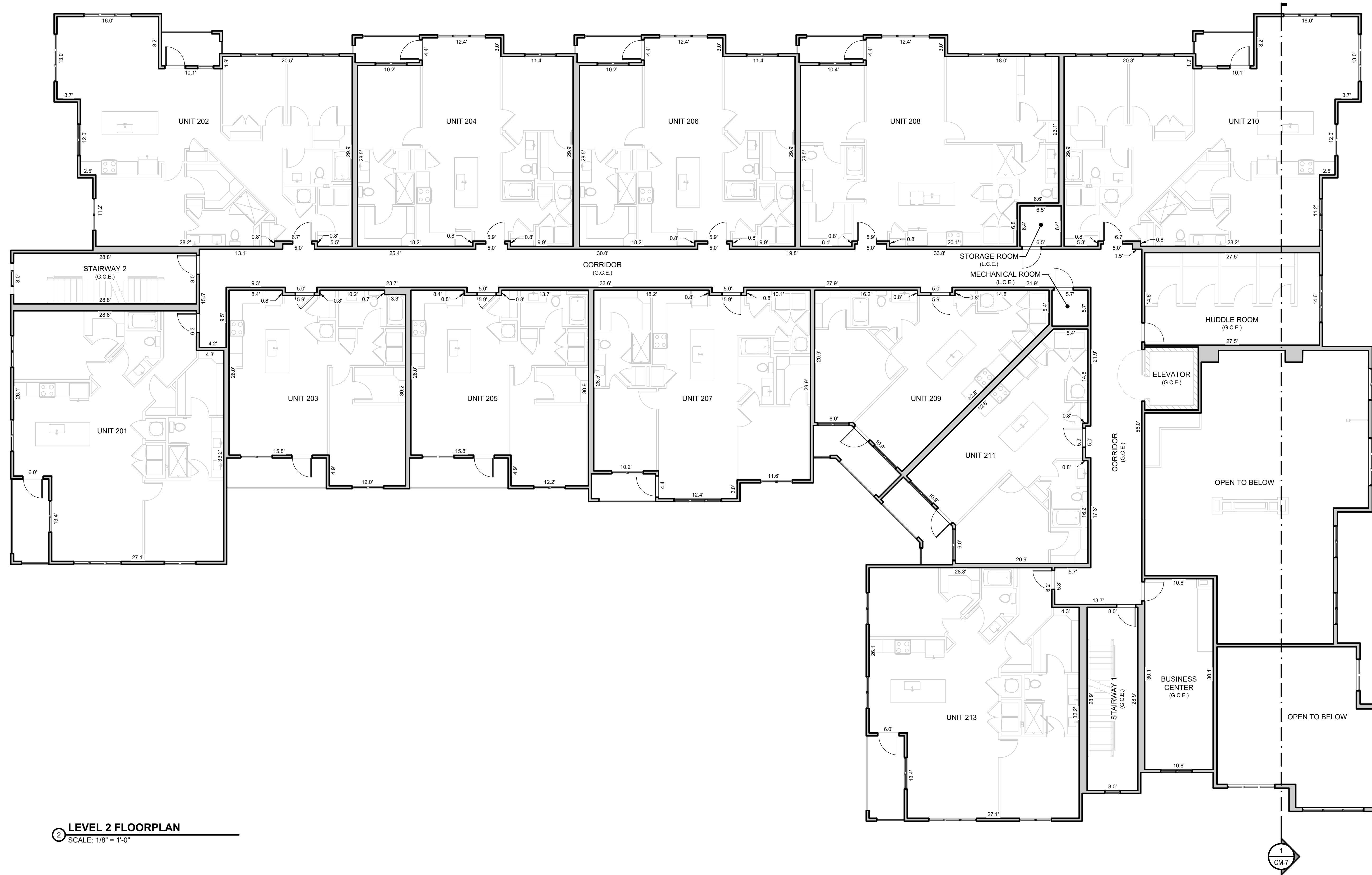
CM-2



CONDOMINIUM MAP OF PARKER AND PINE

LOT 2, PARKER AND PINE FILING 2
SITUATED IN THE SE 1/4 OF SECTION 9 AND THE SW 1/4 OF SECTION 10, T.6S., R.66W. OF THE 6TH P.M.
TOWN OF PARKER, COUNTY OF DOUGLAS, STATE OF COLORADO

PHASE 1 - BUILDING 3 9550 TWENTY MILE ROAD



2 LEVEL 2 FLOORPLAN
SCALE: 1/8" = 1'-0"

LEGEND

G.C.E.	GENERAL COMMON ELEMENT
L.C.E.	LIMITED COMMON ELEMENT

GENERAL NOTES:

ALL LINENWORK DEPICTING INTERIOR IMPROVEMENTS THAT ARE WITHIN AND PART OF A UNIT SHOWN HEREON ARE PER THE ARCHITECTURAL DESIGN PROVIDED BY SEBREE ARCHITECTS, INC. AND MAY NOT REPRESENT THE ACTUAL LOCATIONS OF SUCH INTERIOR IMPROVEMENTS.



LEVEL 2 FLOORPLAN

CONDOMINIUM MAP OF PARKER AND PINE - PHASE 1 BLDG 3
LOT 2, PARKER AND PINE FILING 2
SITUATED IN THE SE 1/4 OF SECTION 9 AND THE SW 1/4 OF SECTION 10, T.6S., R.66W. OF THE 6TH P.M.
TOWN OF PARKER, COUNTY OF DOUGLAS, STATE OF COLORADO
9550 TWENTY MILE ROAD

ES&C Team: CNB, JDP
Survey No.: 23-025-CM
Scale: 1/8" = 1'-0"
Sheet No.: CM-4



14190 East Evans Avenue
Aurora, Colorado 80014
P 303.337.1383
F 303.337.7481
T/F 1.877.273.0659

No.: 1

Description: INITIAL CONDO MAP SUBMITTAL

Date: 10/2/2023

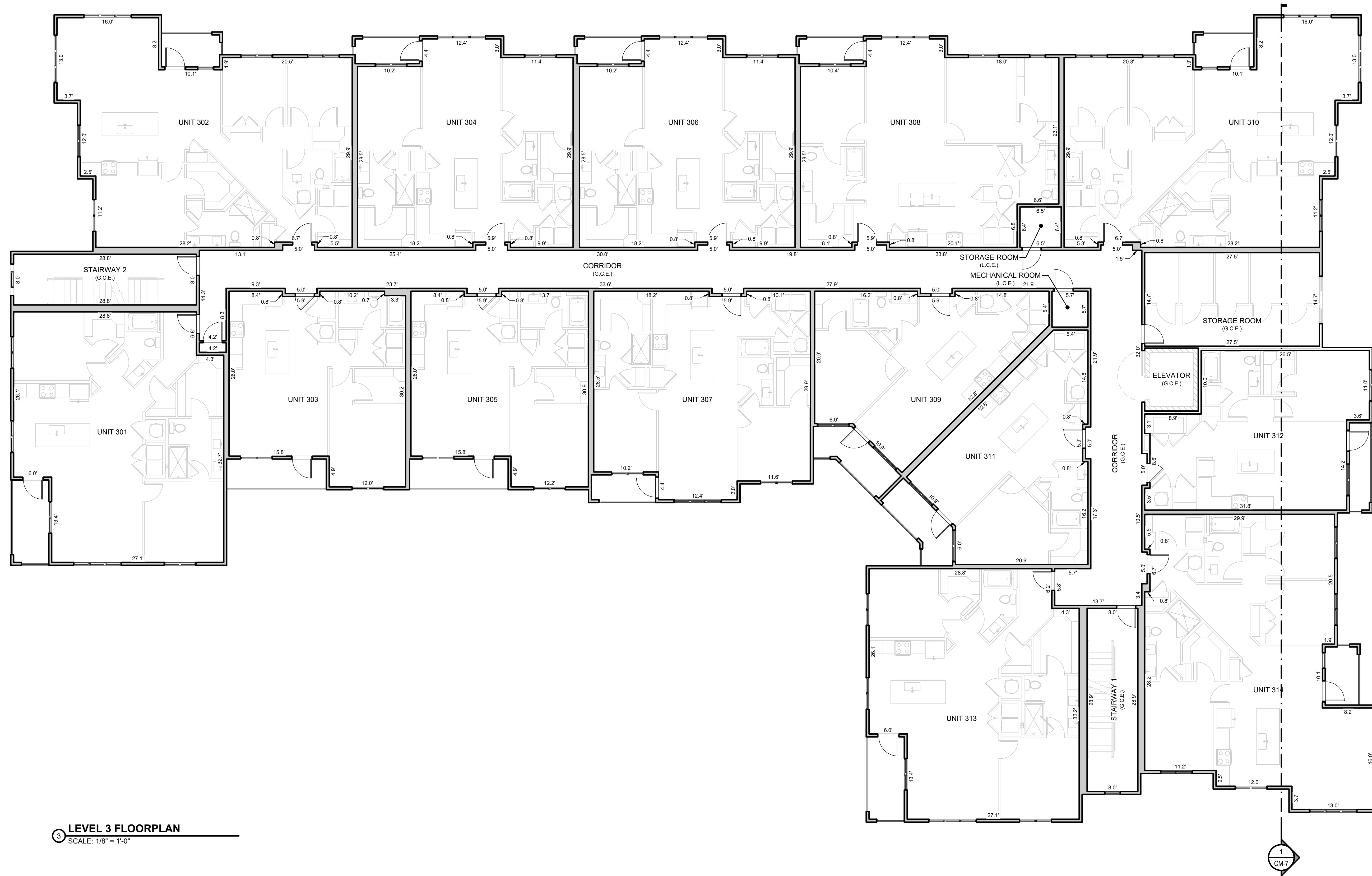
Client:

THE GARRETT COMPANIES
10375 PARK MEADOWS DRIVE, SUITE 125
LONG TREE, COLORADO 80124
TEL: 303.337.2323
ATTN: KARL STOUT

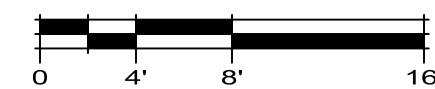
CONDOMINIUM MAP OF PARKER AND PINE

LOT 2, PARKER AND PINE FILING 2
SITUATED IN THE SE 1/4 OF SECTION 9 AND THE SW 1/4 OF SECTION 10, T.6S., R.66W. OF THE 6TH P.M.
TOWN OF PARKER, COUNTY OF DOUGLAS, STATE OF COLORADO

PHASE 1 - BUILDING 3 9550 TWENTY MILE ROAD



3 LEVEL 3 FLOORPLAN
SCALE: 1/8" = 1'-0"



LEGEND

G.C.E.	GENERAL COMMON ELEMENT
L.C.E.	LIMITED COMMON ELEMENT

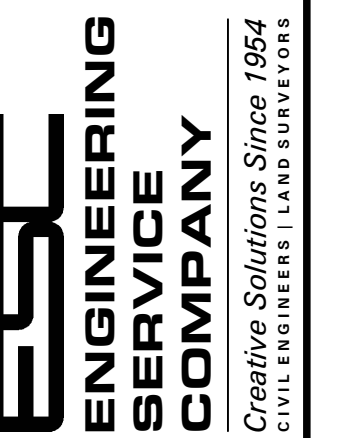
GENERAL NOTES:

ALL LINENWORK DEPICTING INTERIOR IMPROVEMENTS THAT ARE WITHIN AND PART OF A UNIT SHOWN HEREON ARE PER THE ARCHITECTURAL DESIGN PROVIDED BY SEBREE ARCHITECTS, INC. AND MAY NOT REPRESENT THE ACTUAL LOCATIONS OF SUCH INTERIOR IMPROVEMENTS.



LEVEL 3 FLOORPLAN
CONDOMINIUM MAP OF PARKER AND PINE - PHASE 1 BLDG 3
LOT 2, PARKER AND PINE FILING 2
SITUATED IN THE SE 1/4 OF SECTION 9 AND THE SW 1/4 OF SECTION 10, T.6S., R.66W. OF THE 6TH P.M.
TOWN OF PARKER, COUNTY OF DOUGLAS, STATE OF COLORADO
9550 TWENTY MILE ROAD

ES&C Team: CNB, JDP
Survey No.: 23-025-CM
Scale: 1/8" = 1'-0"
Sheet No.: **CM-5**



14190 East Evans Avenue
Aurora, Colorado 80014
engineering@esandc.com
P 303.337.1393
F 303.337.7481
T/F 1.877.273.0659

No.	Description
1	INITIAL CONDO MAP SUBMITTAL

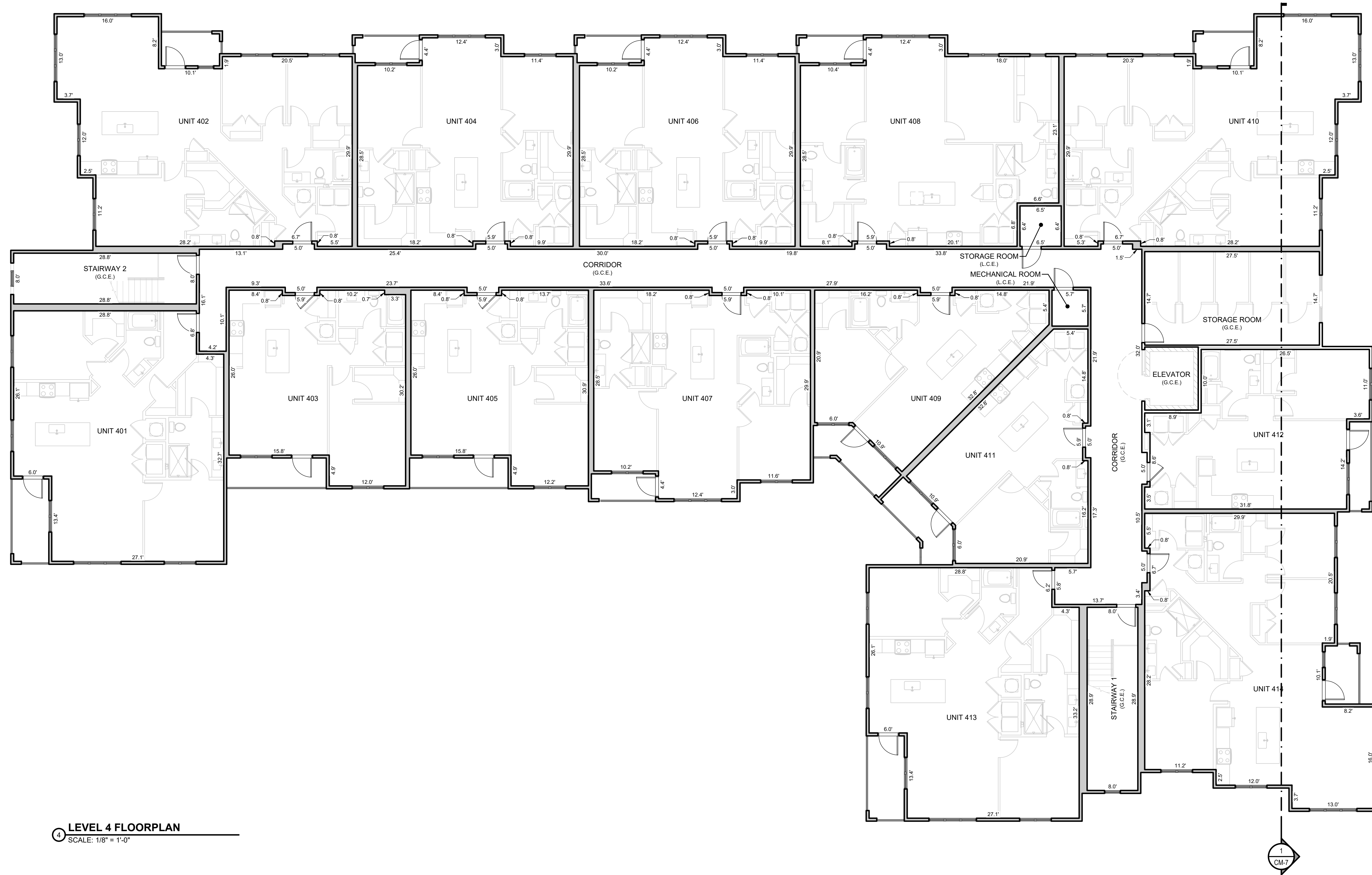
Date: 10/2/2023
Client: THE GARRETT COMPANIES
10375 PARK MEADOWS DRIVE, SUITE 125
LOUISVILLE, COLORADO 80123
ATTN: KARL STOUT

P:\Projects\23-025-CM\23-025-CM-5.dwg 10/2/2023 10:23:00 AM

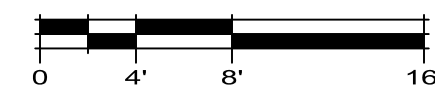
CONDOMINIUM MAP OF PARKER AND PINE

LOT 2, PARKER AND PINE FILING 2
SITUATED IN THE SE 1/4 OF SECTION 9 AND THE SW 1/4 OF SECTION 10, T.6S., R.66W. OF THE 6TH P.M.
TOWN OF PARKER, COUNTY OF DOUGLAS, STATE OF COLORADO

PHASE 1 - BUILDING 3 9550 TWENTY MILE ROAD



4 LEVEL 4 FLOORPLAN
SCALE: 1/8" = 1'-0"



LEGEND

G.C.E.	GENERAL COMMON ELEMENT
L.C.E.	LIMITED COMMON ELEMENT

GENERAL NOTES:

ALL LINENWORK DEPICTING INTERIOR IMPROVEMENTS THAT ARE WITHIN AND PART OF A UNIT SHOWN HEREON ARE PER THE ARCHITECTURAL DESIGN PROVIDED BY SEBREE ARCHITECTS, INC. AND MAY NOT REPRESENT THE ACTUAL LOCATIONS OF SUCH INTERIOR IMPROVEMENTS.



LEVEL 4 FLOORPLAN
CONDOMINIUM MAP OF PARKER AND PINE - PHASE 1 BLDG 3
LOT 2, PARKER AND PINE FILING 2
SITUATED IN THE SE 1/4 OF SECTION 9 AND THE SW 1/4 OF SECTION 10, T.6S., R.66W. OF THE 6TH P.M.
TOWN OF PARKER, COUNTY OF DOUGLAS, STATE OF COLORADO
9550 TWENTY MILE ROAD

ES&C Team: CNB, JDP
Date: 10/2/2023
Survey No.: 23-025-CM
Scale: 1/8" = 1'-0"
Sheet No.: **CM-6**

ES&C ENGINEERING SERVICE COMPANY
Creative Solutions Since 1954
CIVIL ENGINEERS | LAND SURVEYORS

14190 East Evans Avenue
Aurora, Colorado 80014
engineering@esandc.com
P 303.337.1383
F 303.337.7481
T/F 1.877.273.0659

No.: 1

Description: INITIAL CONDO MAP SUBMITTAL

Date: 10/2/2023

Client:

THE GARRETT COMPANIES
10375 PARK MEADOWS DRIVE, SUITE 125
LOUISVILLE, COLORADO 80123
ATTN: KARL STOUT

