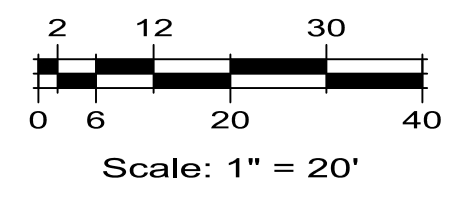


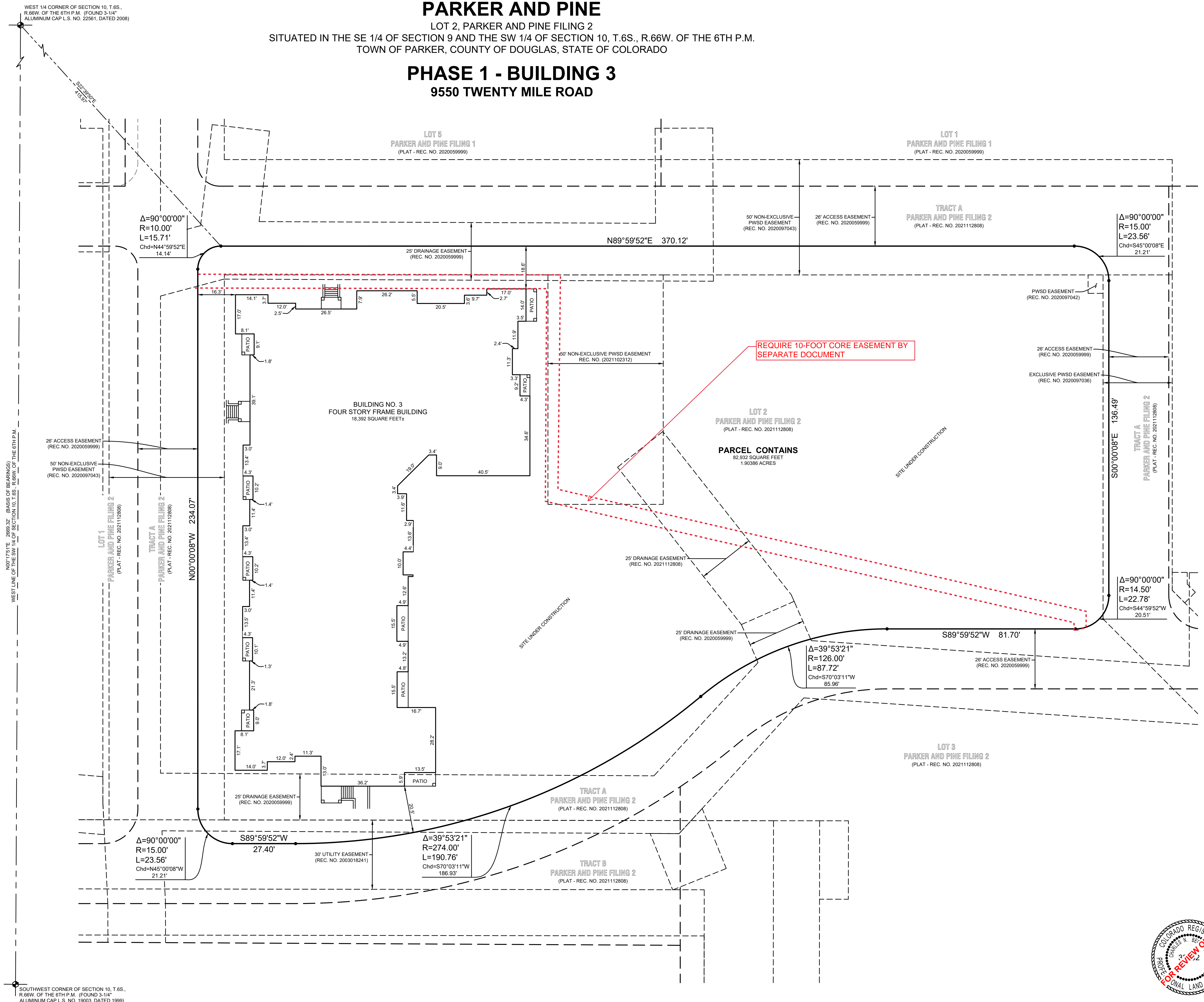
CONDOMINIUM MAP OF PARKER AND PINE

LOT 2, PARKER AND PINE FILING 2
SITUATED IN THE SE 1/4 OF SECTION 9 AND THE SW 1/4 OF SECTION 10, T.6S., R.66W. OF THE 6TH P.M.
TOWN OF PARKER, COUNTY OF DOUGLAS, STATE OF COLORADO

PHASE 1 - BUILDING 3 9550 TWENTY MILE ROAD



LEGEND	
REC. NO.	RECEPTION NUMBER
●	ALIQUOT CORNER
•	NO MONUMENT FOUND OR SET



REQUIRE 10-FOOT CORE EASEMENT BY SEPARATE DOCUMENT



LIMITED IMPROVEMENT SURVEY
CONDOMINIUM MAP OF PARKER AND PINE - PHASE 1 BLDG 3
LOT 2, PARKER AND PINE FILING 2
SITUATED IN THE SE 1/4 OF SECTION 9 AND THE SW 1/4 OF SECTION 10, T.6S., R.66W. OF THE 6TH P.M.
TOWN OF PARKER, COUNTY OF DOUGLAS, STATE OF COLORADO
9550 TWENTY MILE ROAD

ESC ENGINEERING SERVICE COMPANY
Creative Solutions Since 1954
CIVIL ENGINEERS | LAND SURVEYORS

14190 East Evans Avenue
Aurora, Colorado 80014
engineering@esc-co.com
P 303.337.1383
F 303.337.7481
T/F 1.877.273.0659

THE GARRETT COMPANIES
10375 PARK MEADOWS DRIVE, SUITE 125
LONG TREE, COLORADO 80124
760.223.4223
ATTN: KARL STOUT

No.	Description	Date
1	INITIAL CONDO MAP SUBMITTAL	10/2/2023

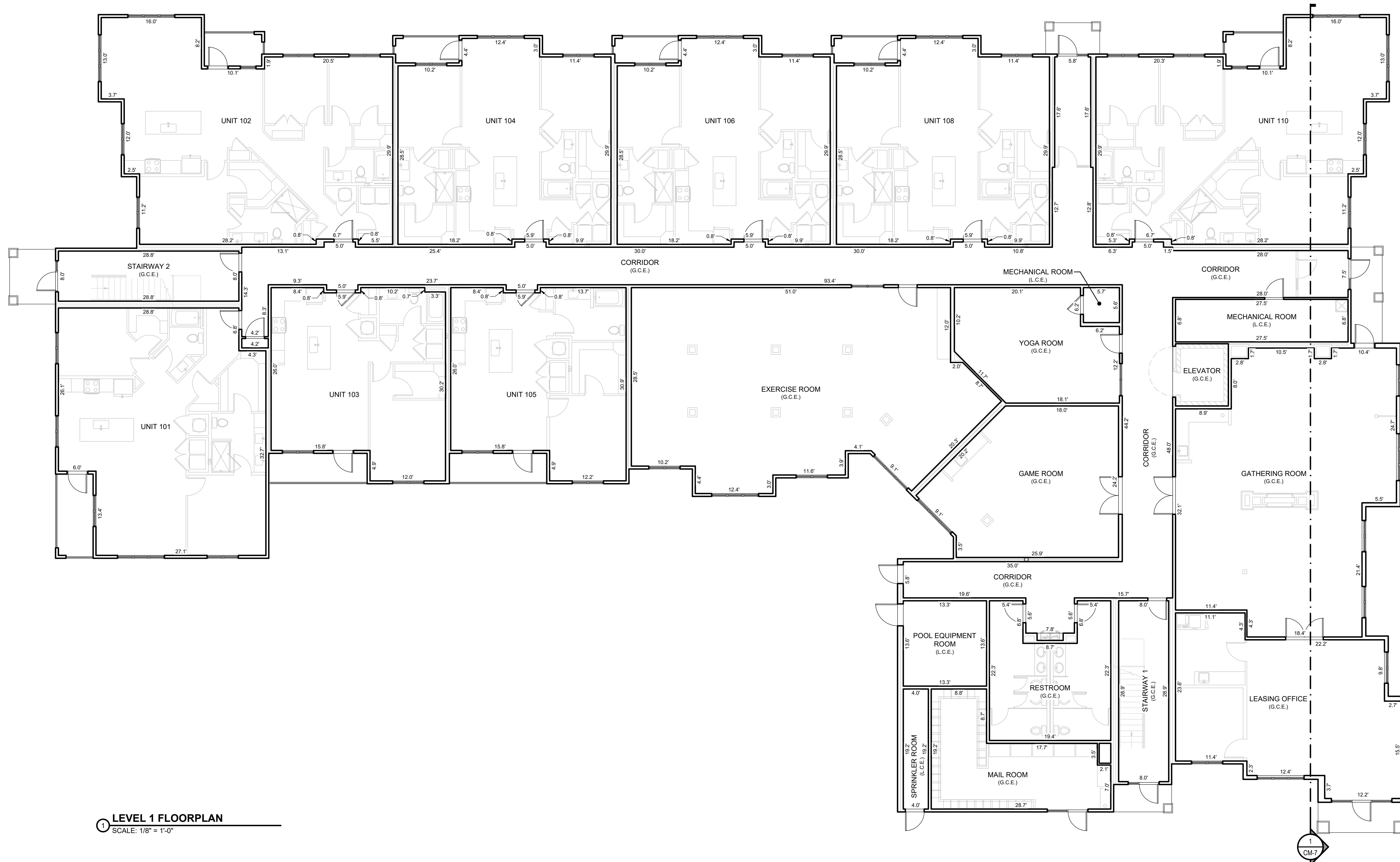
ESC Team:	CNR, JDP	Date:	10/2/2023
Survey No.:	23-025-CM	Scale:	1" = 20'
Sheet No.:			

CM-2

CONDOMINIUM MAP OF PARKER AND PINE

LOT 2, PARKER AND PINE FILING 2
SITUATED IN THE SE 1/4 OF SECTION 9 AND THE SW 1/4 OF SECTION 10, T.6S., R.66W. OF THE 6TH P.M.
TOWN OF PARKER, COUNTY OF DOUGLAS, STATE OF COLORADO

PHASE 1 - BUILDING 3 9550 TWENTY MILE ROAD



1 LEVEL 1 FLOORPLAN
SCALE: 1/8" = 1'-0"



LEGEND

G.C.E.	GENERAL COMMON ELEMENT
L.C.E.	LIMITED COMMON ELEMENT

GENERAL NOTES:
ALL LINENWORK DEPICTING INTERIOR IMPROVEMENTS THAT ARE WITHIN AND PART OF A UNIT SHOWN HEREON ARE PER THE ARCHITECTURAL DESIGN PROVIDED BY SEBREE ARCHITECTS, INC. AND MAY NOT REPRESENT THE ACTUAL LOCATIONS OF SUCH INTERIOR IMPROVEMENTS.



LEVEL 1 FLOORPLAN
CONDOMINIUM MAP OF PARKER AND PINE - PHASE 1 BLDG 3
LOT 2, PARKER AND PINE FILING 2
SITUATED IN THE SE 1/4 OF SECTION 9 AND THE SW 1/4 OF SECTION 10, T.6S., R.66W. OF THE 6TH P.M.
TOWN OF PARKER, COUNTY OF DOUGLAS, STATE OF COLORADO
9550 TWENTY MILE ROAD

ESC ENGINEERING SERVICE COMPANY
Creative Solutions Since 1954
CIVIL ENGINEERS | LAND SURVEYORS
14190 East Evans Avenue
Aurora, Colorado 80014
engineering@esc.com
P 303.337.1393
F 303.337.7481
T/F 1.877.273.0659

THE GARRETT COMPANIES
10375 PARK MEADOWS DRIVE, SUITE 125
LONG TREE, COLORADO 80124
763
ATTN: KARL STOUT

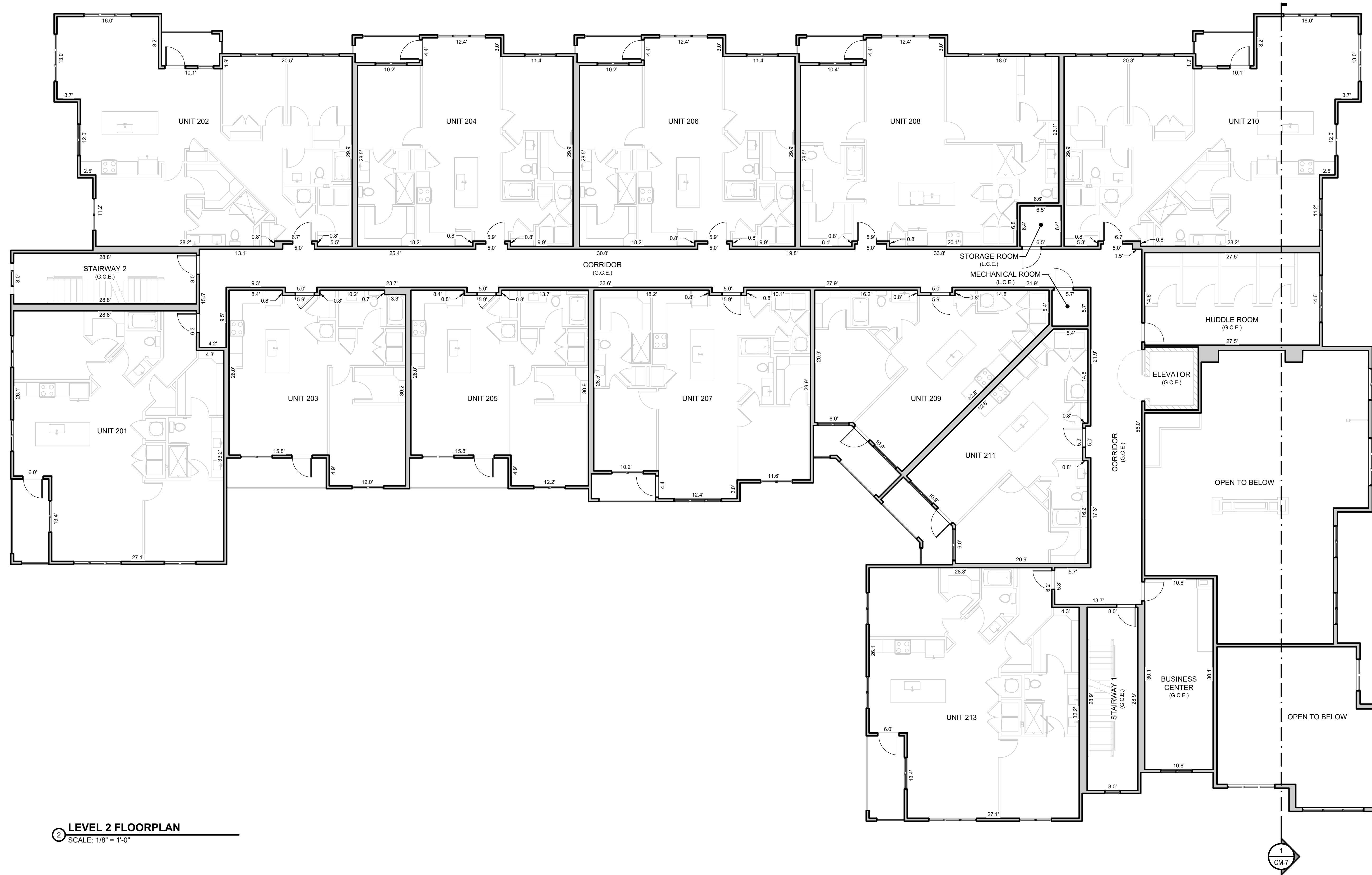
No.:	1	INITIAL CONDO MAP SUBMITTAL
Description:		
Date:	10/2/2023	

ESC Team: CNB, JDP
Date: 10/2/2023
Survey No.: 23-025-CM
Scale: 1/8" = 1'-0"
Sheet No.: **CM-3**

CONDOMINIUM MAP OF PARKER AND PINE

LOT 2, PARKER AND PINE FILING 2
SITUATED IN THE SE 1/4 OF SECTION 9 AND THE SW 1/4 OF SECTION 10, T.6S., R.66W. OF THE 6TH P.M.
TOWN OF PARKER, COUNTY OF DOUGLAS, STATE OF COLORADO

PHASE 1 - BUILDING 3 9550 TWENTY MILE ROAD



2 LEVEL 2 FLOORPLAN
SCALE: 1/8" = 1'-0"

LEGEND

G.C.E.	GENERAL COMMON ELEMENT
L.C.E.	LIMITED COMMON ELEMENT

GENERAL NOTES:

ALL LINENWORK DEPICTING INTERIOR IMPROVEMENTS THAT ARE WITHIN AND PART OF A UNIT SHOWN HEREON ARE PER THE ARCHITECTURAL DESIGN PROVIDED BY SEBREE ARCHITECTS, INC. AND MAY NOT REPRESENT THE ACTUAL LOCATIONS OF SUCH INTERIOR IMPROVEMENTS.



LEVEL 2 FLOORPLAN
CONDOMINIUM MAP OF PARKER AND PINE - PHASE 1 BLDG 3
LOT 2, PARKER AND PINE FILING 2
SITUATED IN THE SE 1/4 OF SECTION 9 AND THE SW 1/4 OF SECTION 10, T.6S., R.66W. OF THE 6TH P.M.
TOWN OF PARKER, COUNTY OF DOUGLAS, STATE OF COLORADO
9550 TWENTY MILE ROAD

ES&C Team: CMB, JDP
Date: 10/2/2023
Survey No.: 23-025-CM
Scale: 1/8" = 1'-0"
Sheet No.: **CM-4**

ES&C ENGINEERING SERVICE COMPANY
Creative Solutions Since 1954
CIVIL ENGINEERS | LAND SURVEYORS

14190 East Evans Avenue
Aurora, Colorado 80014
P 303.337.1383
F 303.337.7481
T/F 1.877.273.0659
engineer@esandc.com
esandc.com

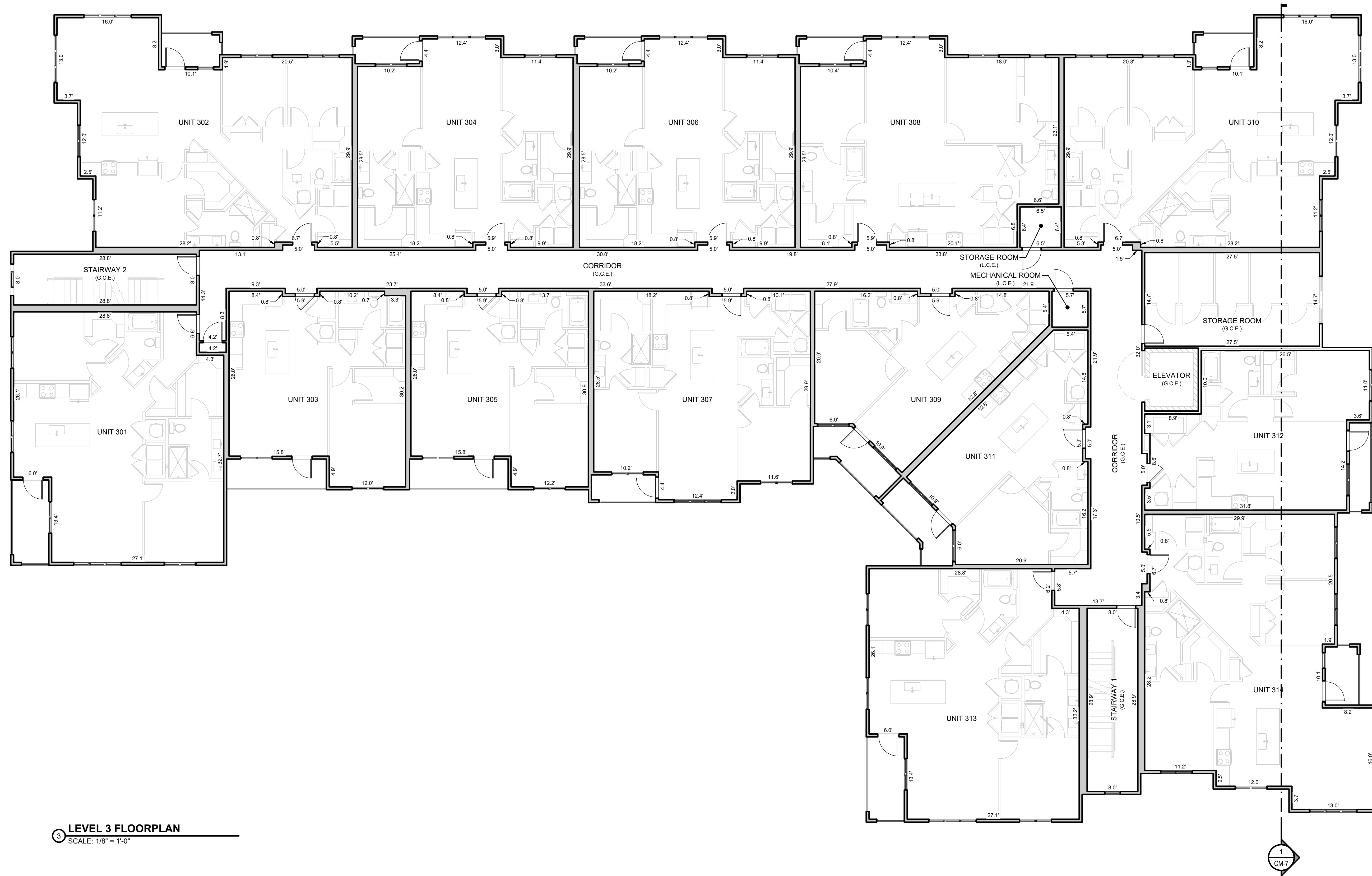
No.	Description
1	INITIAL CONDO MAP SUBMITTAL

Date: 10/2/2023
Client: **THE GARRETT COMPANIES**
10375 PARK MEADOWS DRIVE, SUITE 125
LONG TREE, COLORADO 80124
ATTN: KARL STOUT

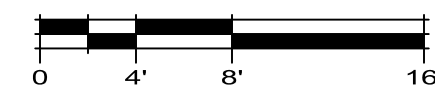
CONDOMINIUM MAP OF PARKER AND PINE

LOT 2, PARKER AND PINE FILING 2
SITUATED IN THE SE 1/4 OF SECTION 9 AND THE SW 1/4 OF SECTION 10, T.6S., R.66W. OF THE 6TH P.M.
TOWN OF PARKER, COUNTY OF DOUGLAS, STATE OF COLORADO

PHASE 1 - BUILDING 3 9550 TWENTY MILE ROAD



3 LEVEL 3 FLOORPLAN
SCALE: 1/8" = 1'-0"



LEGEND

G.C.E.	GENERAL COMMON ELEMENT
L.C.E.	LIMITED COMMON ELEMENT

GENERAL NOTES:

ALL LINENWORK DEPICTING INTERIOR IMPROVEMENTS THAT ARE WITHIN AND PART OF A UNIT SHOWN HEREON ARE PER THE ARCHITECTURAL DESIGN PROVIDED BY SEBREE ARCHITECTS, INC. AND MAY NOT REPRESENT THE ACTUAL LOCATIONS OF SUCH INTERIOR IMPROVEMENTS.



LEVEL 3 FLOORPLAN
CONDOMINIUM MAP OF PARKER AND PINE - PHASE 1 BLDG 3
LOT 2, PARKER AND PINE FILING 2
SITUATED IN THE SE 1/4 OF SECTION 9 AND THE SW 1/4 OF SECTION 10, T.6S., R.66W. OF THE 6TH P.M.
TOWN OF PARKER, COUNTY OF DOUGLAS, STATE OF COLORADO
9550 TWENTY MILE ROAD

ES&C Team: CNB, JDP
Date: 10/2/2023
Survey No.: 23-025-CM
Scale: 1/8" = 1'-0"
Sheet No.: **CM-5**



14190 East Evans Avenue
Aurora, Colorado 80014
engineering@esandc.com
P 303.337.1393
F 303.337.7481
T/F 1.877.273.0659

No.: 1

Description: INITIAL CONDO MAP SUBMITTAL

Date: 10/2/2023

Client:

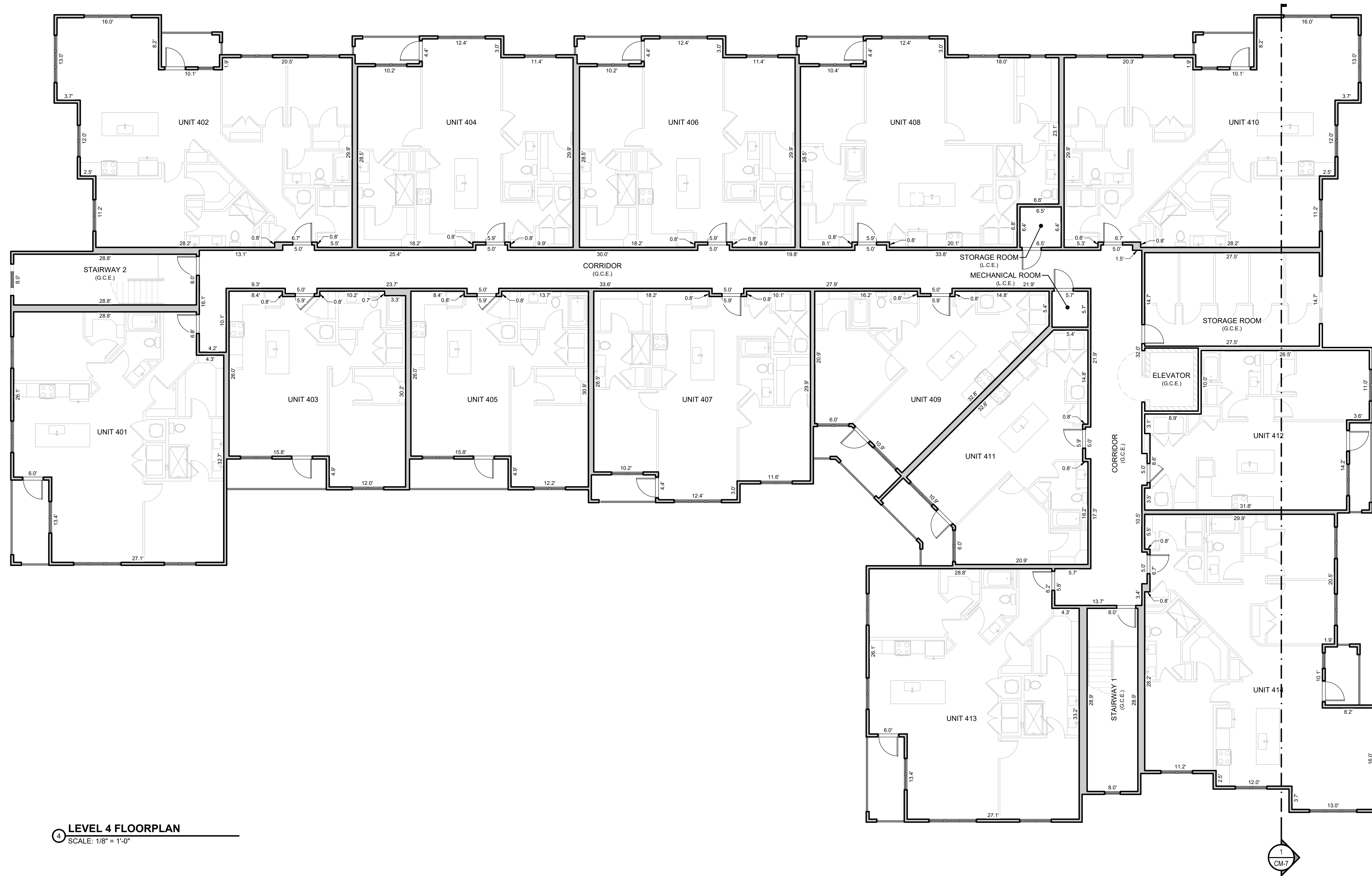
THE GARRETT COMPANIES
10375 PARK MEADOWS DRIVE, SUITE 125
LONG TREE, COLORADO 80124
TEL: 303.440.2623
ATTN: KARL STOUT

P:\Projects\2023\10-2-2023\CM-5\Level 3 Floorplan.dwg 10/2/2023 Company: ES&C

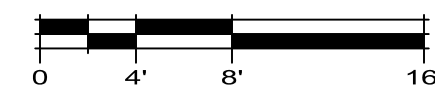
CONDOMINIUM MAP OF PARKER AND PINE

LOT 2, PARKER AND PINE FILING 2
SITUATED IN THE SE 1/4 OF SECTION 9 AND THE SW 1/4 OF SECTION 10, T.6S., R.66W. OF THE 6TH P.M.
TOWN OF PARKER, COUNTY OF DOUGLAS, STATE OF COLORADO

PHASE 1 - BUILDING 3 9550 TWENTY MILE ROAD



4 LEVEL 4 FLOORPLAN
SCALE: 1/8" = 1'-0"



LEGEND

G.C.E.	GENERAL COMMON ELEMENT
L.C.E.	LIMITED COMMON ELEMENT

GENERAL NOTES:

ALL LINENWORK DEPICTING INTERIOR IMPROVEMENTS THAT ARE WITHIN AND PART OF A UNIT SHOWN HEREON ARE PER THE ARCHITECTURAL DESIGN PROVIDED BY SEBREE ARCHITECTS, INC. AND MAY NOT REPRESENT THE ACTUAL LOCATIONS OF SUCH INTERIOR IMPROVEMENTS.



LEVEL 4 FLOORPLAN
CONDOMINIUM MAP OF PARKER AND PINE - PHASE 1 BLDG 3
LOT 2, PARKER AND PINE FILING 2
SITUATED IN THE SE 1/4 OF SECTION 9 AND THE SW 1/4 OF SECTION 10, T.6S., R.66W. OF THE 6TH P.M.
TOWN OF PARKER, COUNTY OF DOUGLAS, STATE OF COLORADO
9550 TWENTY MILE ROAD

ES&C Team: CNB, JDP
Date: 10/2/2023
Survey No.: 23-025-CM
Scale: 1/8" = 1'-0"
Sheet No.: **CM-6**



14190 East Evans Avenue
Aurora, Colorado 80014
engineering@esandc.com
P 303.337.1383
F 303.337.7481
T/F 1.877.273.0659

No.: 1

Description: INITIAL CONDO MAP SUBMITTAL

Date: 10/2/2023

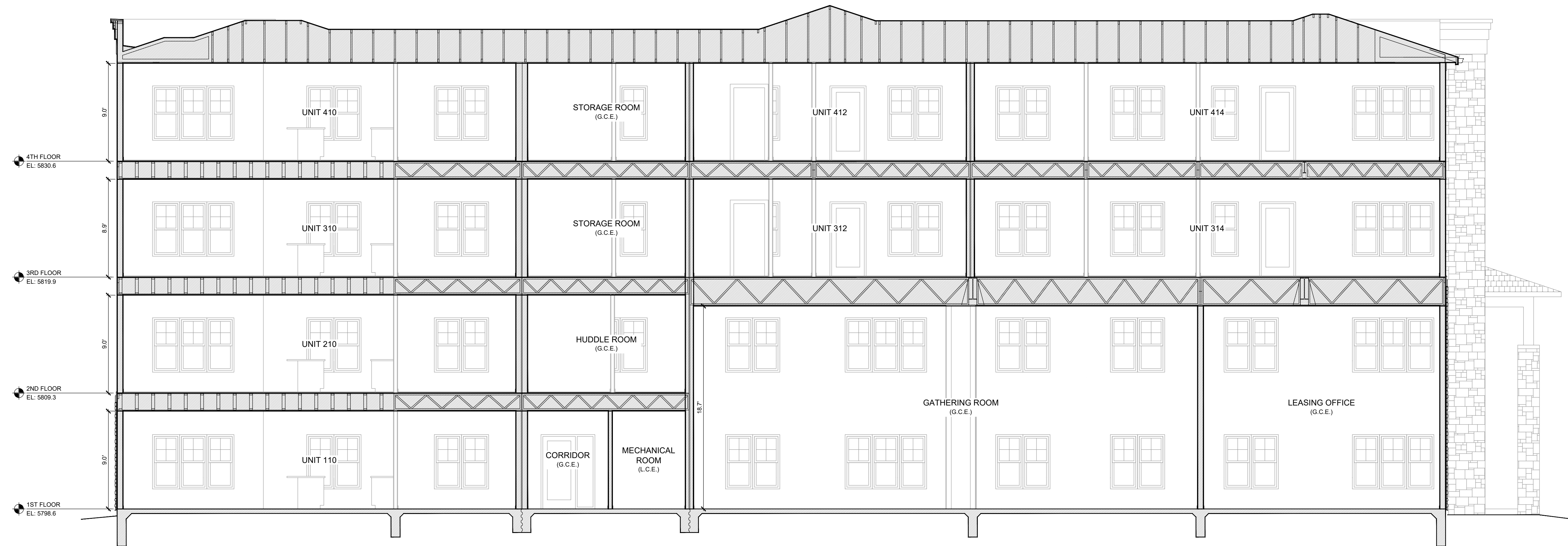
Client:

THE GARRETT COMPANIES
10375 PARK MEADOWS DRIVE, SUITE 125
LOUISVILLE, COLORADO 80123
ATTN: KARL STOUT

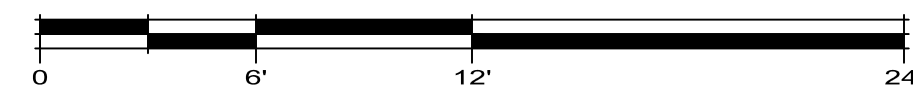
CONDOMINIUM MAP OF PARKER AND PINE

LOT 2, PARKER AND PINE FILING 2
SITUATED IN THE SE 1/4 OF SECTION 9 AND THE SW 1/4 OF SECTION 10, T.6S., R.66W. OF THE 6TH P.M.
TOWN OF PARKER, COUNTY OF DOUGLAS, STATE OF COLORADO

PHASE 1 - BUILDING 3 9550 TWENTY MILE ROAD



BUILDING SECTION
SCALE: 3/16" = 1'-0"



LEGEND

G.C.E.	GENERAL COMMON ELEMENT
L.C.E.	LIMITED COMMON ELEMENT

GENERAL NOTES:

ALL LINEWORK DEPICTING INTERIOR IMPROVEMENTS THAT ARE WITHIN AND PART OF A UNIT SHOWN HEREON ARE PER THE ARCHITECTURAL DESIGN PROVIDED BY SEBREE ARCHITECTS, INC. AND MAY NOT REPRESENT THE ACTUAL LOCATIONS OF SUCH INTERIOR IMPROVEMENTS.



<p>ES&C ENGINEERING SERVICE COMPANY Creative Solutions Since 1954 Civil Engineers Land Surveyors</p> <p>14190 East Evans Avenue Aurora, Colorado 80014 engineering@esandc.com P 303.337.1383 F 303.337.7481 T/F 1.877.273.0659</p>	<p>THE GARRETT COMPANIES 10375 PARK MEADOWS DRIVE, SUITE 125 LONG TREE, COLORADO 80124 Tel: 303.440.2623 ATTN: KARL STOUT</p>
<p>Client: THE GARRETT COMPANIES</p>	
<p>Date: 10/2/2023</p>	
<p>Description: INITIAL CONDO MAP SUBMITTAL</p>	
<p>No.: 1</p>	
<p>Title: BUILDING SECTION CONDOMINIUM MAP OF PARKER AND PINE - PHASE 1 BLDG 3 LOT 2, PARKER AND PINE FILING 2 SITUATED IN THE SE 1/4 OF SECTION 9 AND THE SW 1/4 OF SECTION 10, T.6S., R.66W. OF THE 6TH P.M. TOWN OF PARKER, COUNTY OF DOUGLAS, STATE OF COLORADO 9550 TWENTY MILE ROAD</p>	
<p>ES&C Team: CNB, JDP Survey No.: 23-025-CM Scale: 3/16" = 1'-0" Sheet No.: CM-7</p>	