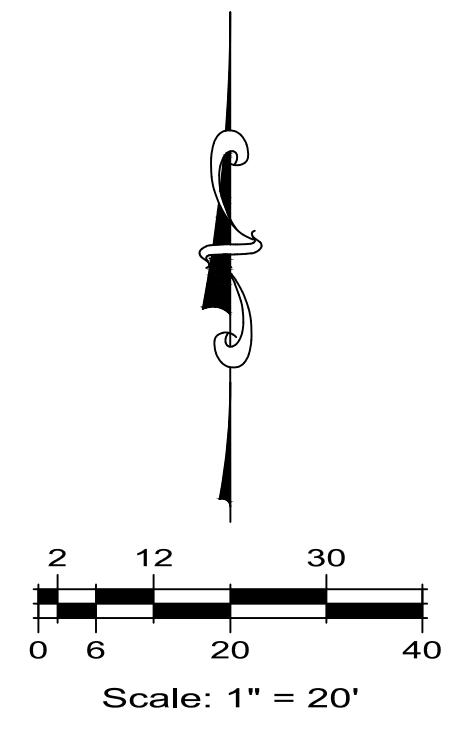


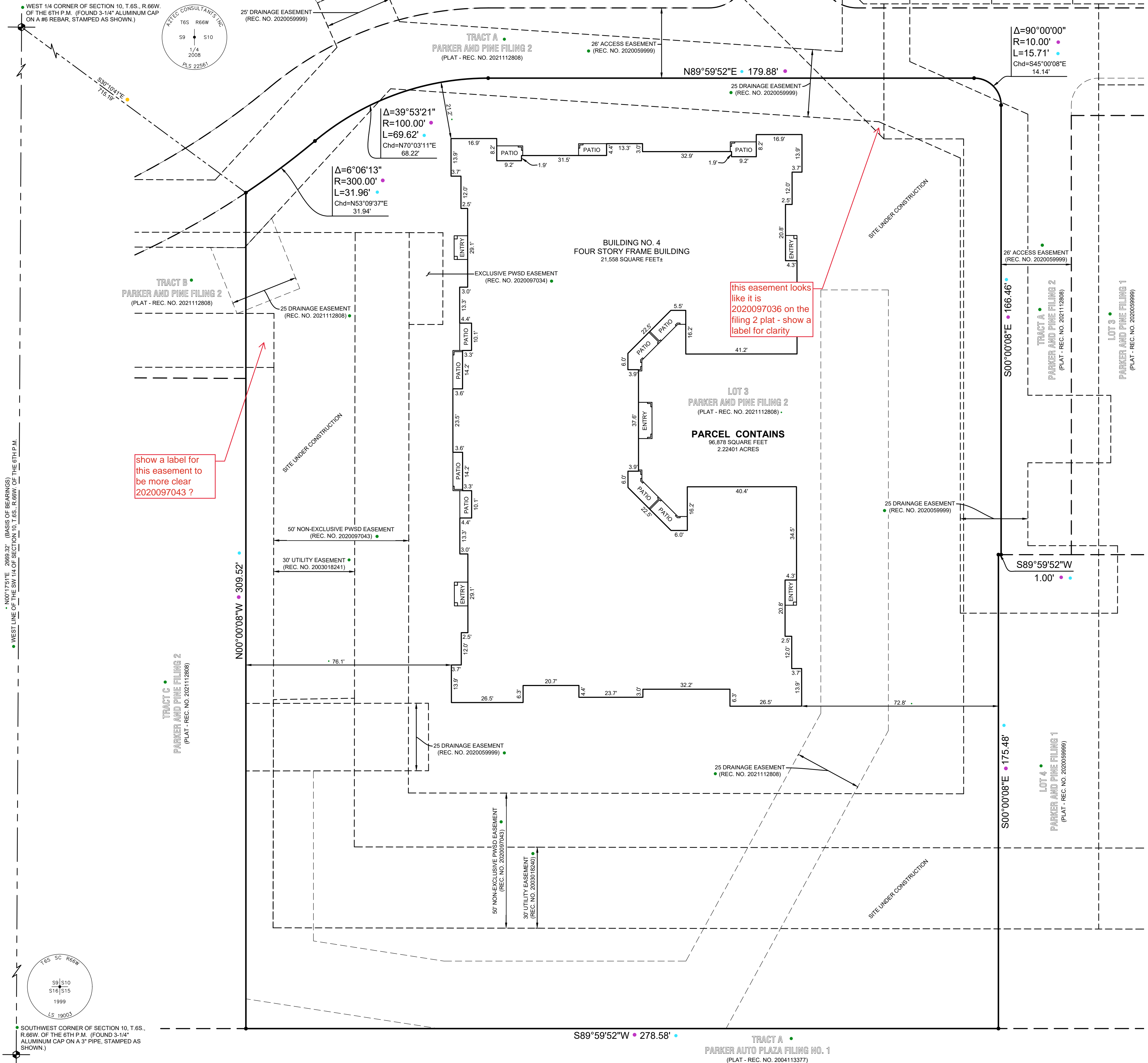
PARKER AND PINE CONDOMINIUM PLAT BUILDING #4

A PART OF LOT 3, PARKER AND PINE FILING 2
SITUATED IN THE SE 1/4 OF SECTION 9 AND THE SW 1/4 OF SECTION 10, T.6S., R.66W. OF THE 6TH P.M.
TOWN OF PARKER, COUNTY OF DOUGLAS, STATE OF COLORADO

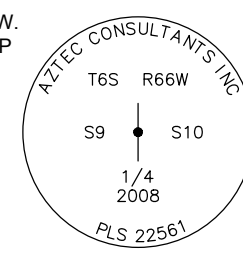
9554 TWENTY MILE ROAD



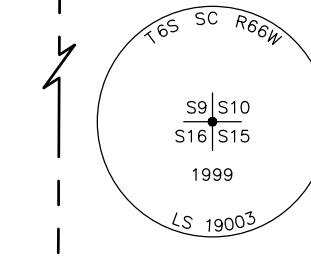
LEGEND	
REC. NO.	RECEPTION NUMBER
●	ALIQUOT CORNER
•	NO MONUMENT FOUND OR SET



WEST 1/4 CORNER OF SECTION 10, T.6S., R.66W. OF THE 6TH P.M. (FOUND 3-1/4" ALUMINUM CAP ON A #6 REBAR, STAMPED AS SHOWN.)



N00°00'08"W • 309.52'



SOUTHWEST CORNER OF SECTION 10, T.6S., R.66W. OF THE 6TH P.M. (FOUND 3-1/4" ALUMINUM CAP ON A 3" PIPE, STAMPED AS SHOWN.)

S89°59'52"W • 278.58'

TRACT A
PARKER AUTO PLAZA FILING NO. 1
(PLAT - REC. NO. 2004113377)



LIMITED IMPROVEMENT SURVEY
PARKER AND PINE CONDOMINIUM PLAT - BUILDING #4
A PART OF LOT 3, PARKER AND PINE FILING 2
SITUATED IN THE SE 1/4 OF SECTION 9 AND THE SW 1/4 OF SECTION 10, T.6S., R.66W. OF THE 6TH P.M.
TOWN OF PARKER, COUNTY OF DOUGLAS, STATE OF COLORADO
9554 TWENTY MILE ROAD

ESC ENGINEERING SERVICE COMPANY
Creative Solutions Since 1954
Civil Engineers | Land Surveyors

14190 East Evans Avenue
Aurora, Colorado 80014
P 303.337.1393
F 303.337.7481
T/F 1.877.273.0659

engineering@esc.com

No.	Description	Date
1	INITIAL CONDO MAP SUBMITTAL	6/24/2024

Client:
THE GARRETT COMPANIES
10375 PARK MEADOWS DRIVE, SUITE 125
LONG TREE, COLORADO 80124
ATTN: KARL STOUT

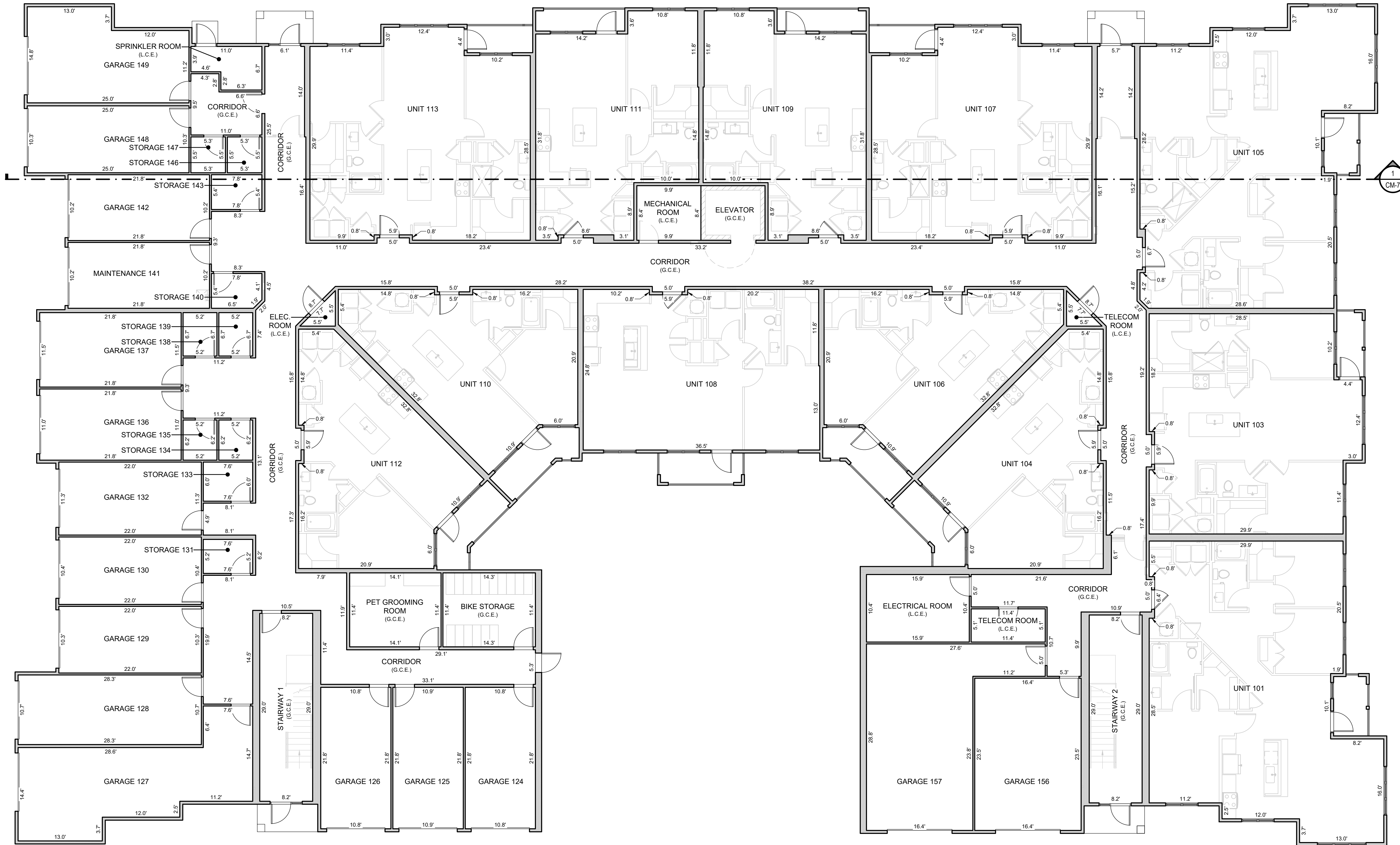
ESC Team: CMB, JDP
Survey No.: 23-025-CM
Scale: 1" = 20'
Date: 6/24/2024

CM-2

PARKER AND PINE CONDOMINIUM PLAT BUILDING #4

A PART OF LOT 3, PARKER AND PINE FILING 2 •
SITUATED IN THE SE 1/4 OF SECTION 9 AND THE SW 1/4 OF SECTION 10, T.6S., R.66W. OF THE 6TH P.M.
TOWN OF PARKER, COUNTY OF DOUGLAS, STATE OF COLORADO

9554 TWENTY MILE ROAD



1 LEVEL 1 FLOORPLAN
SCALE: 1/8" = 1'-0"



LEGEND

G.C.E.	GENERAL COMMON ELEMENT
L.C.E.	LIMITED COMMON ELEMENT

GENERAL NOTES:

ALL LINENWORK DEPICTING INTERIOR IMPROVEMENTS THAT ARE WITHIN AND PART OF A UNIT SHOWN HEREON ARE PER THE ARCHITECTURAL DESIGN PROVIDED BY SEBRE ARCHITECTS, INC. AND MAY NOT REPRESENT THE ACTUAL LOCATIONS OF SUCH INTERIOR IMPROVEMENTS.



LEVEL 1 FLOORPLAN

PARKER AND PINE CONDOMINIUM PLAT - BUILDING #4
A PART OF LOT 3, PARKER AND PINE FILING 2
SITUATED IN THE SE 1/4 OF SECTION 9 AND THE SW 1/4 OF SECTION 10, T.6S., R.66W. OF THE 6TH P.M.
TOWN OF PARKER, COUNTY OF DOUGLAS, STATE OF COLORADO
9554 TWENTY MILE ROAD

ES&C Team:	CMB, JDP	Date:	8/24/2024
Survey No.:	23-025-CM	Scale:	1/8" = 1'-0"
Sheet No.:			

CM-3



14190 East Evans Avenue
Aurora, Colorado 80014
P 303.337.1383
F 303.337.7481
T/F 1.877.273.0659

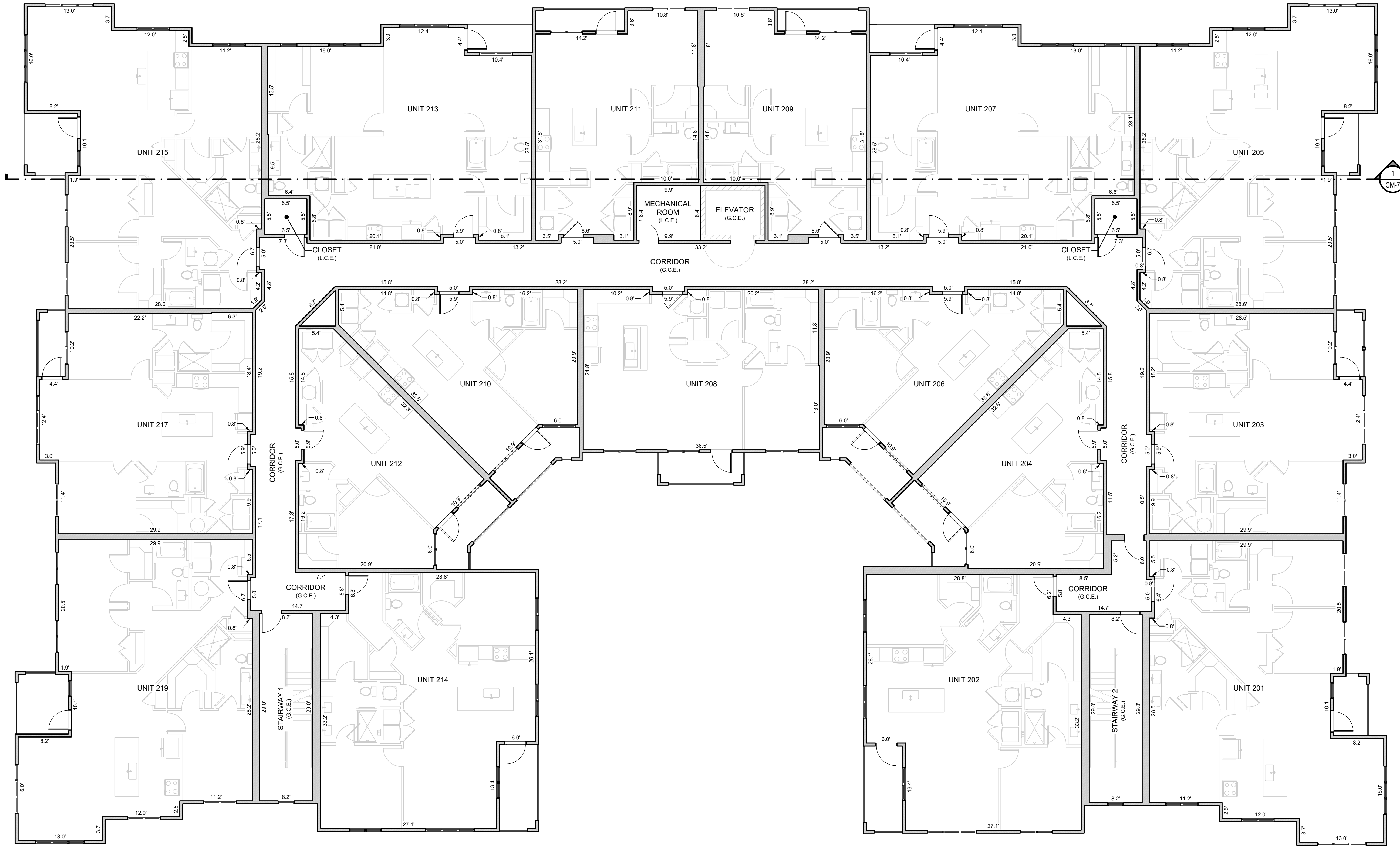
No.:	1	Description:	INITIAL CONDO MAP SUBMITTAL
Date:	8/24/2024		

THE GARRETT COMPANIES
10375 PARK MEADOWS DRIVE, SUITE 125
LONG TREE, COLORADO 80124
TEL: 303.441.2623
ATTN: KARL STOUT

PARKER AND PINE CONDOMINIUM PLAT BUILDING #4

A PART OF LOT 3, PARKER AND PINE FILING 2 •
SITUATED IN THE SE 1/4 OF SECTION 9 AND THE SW 1/4 OF SECTION 10, T.6S., R.66W. OF THE 6TH P.M.
TOWN OF PARKER, COUNTY OF DOUGLAS, STATE OF COLORADO

9554 TWENTY MILE ROAD



2 LEVEL 2 FLOORPLAN
SCALE: 1/8" = 1'-0"



LEGEND

G.C.E.	GENERAL COMMON ELEMENT
L.C.E.	LIMITED COMMON ELEMENT

GENERAL NOTES:

ALL LINENWORK DEPICTING INTERIOR IMPROVEMENTS THAT ARE WITHIN AND PART OF A UNIT SHOWN HEREON ARE PER THE ARCHITECTURAL DESIGN PROVIDED BY SEBRE ARCHITECTS, INC. AND MAY NOT REPRESENT THE ACTUAL LOCATIONS OF SUCH INTERIOR IMPROVEMENTS.



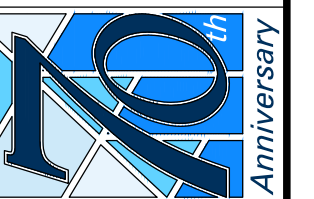
LEVEL 2 FLOORPLAN

PARKER AND PINE CONDOMINIUM PLAT - BUILDING #4
A PART OF LOT 3, PARKER AND PINE FILING 2
SITUATED IN THE SE 1/4 OF SECTION 9 AND THE SW 1/4 OF SECTION 10, T.6S., R.66W. OF THE 6TH P.M.
TOWN OF PARKER, COUNTY OF DOUGLAS, STATE OF COLORADO
9554 TWENTY MILE ROAD

ES&C Team:	CMB, JDP	Date:	8/24/2024
Survey No.:	23-025-CM	Scale:	1/8" = 1'-0"
Sheet No.:			

CM-4

ES&C ENGINEERING SERVICE COMPANY
Creative Solutions Since 1954
CIVIL ENGINEERS | LAND SURVEYORS



14190 East Evans Avenue
Aurora, Colorado 80014
engineering@esandc.com
P 303.337.1393
F 303.337.7481
T/F 1.877.273.0659

No.:

Description:

Date:

Client:

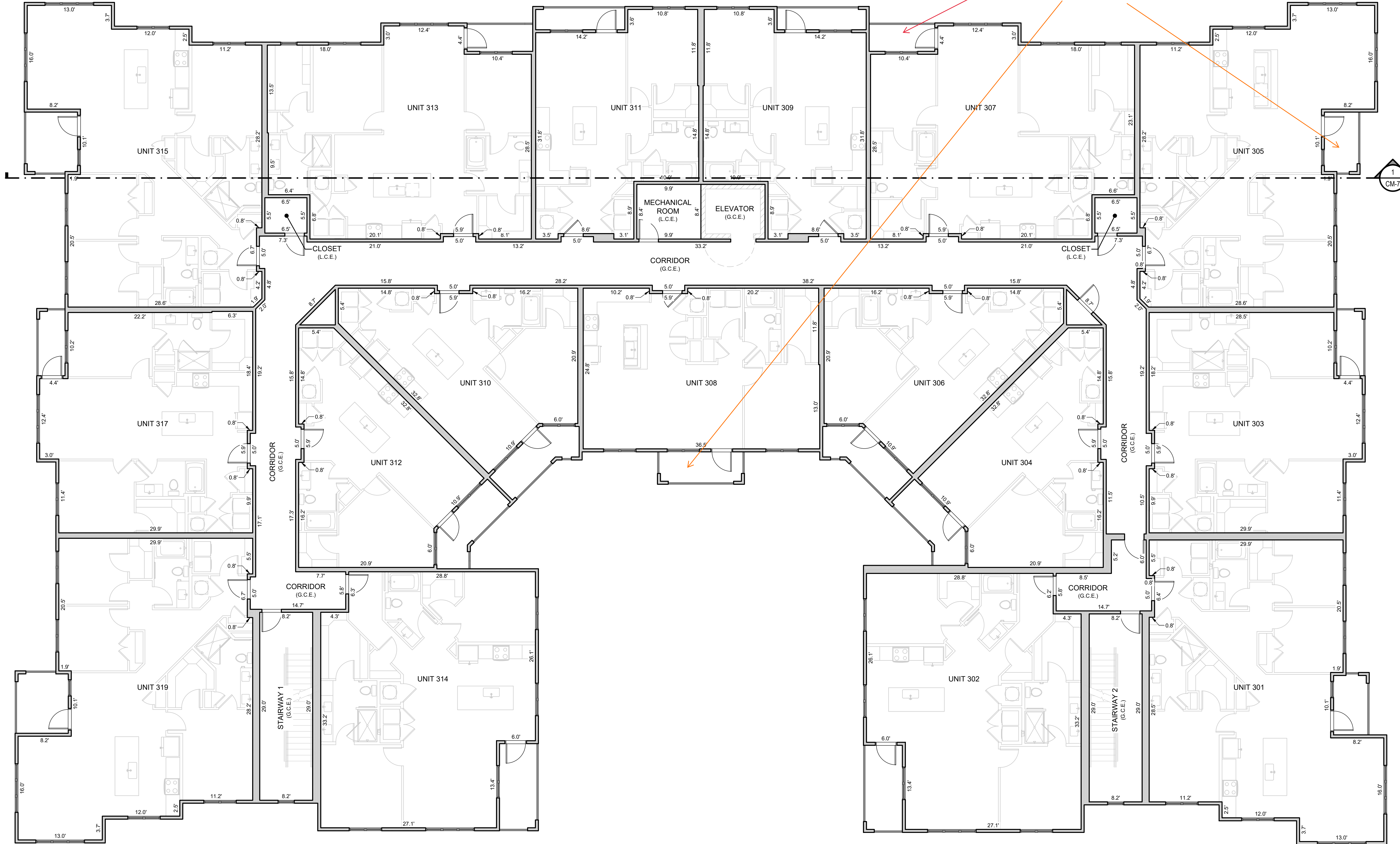
THE GARRETT COMPANIES
10375 PARK MEADOWS DRIVE, SUITE 125
LONG TREE, COLORADO 80124
763.426.2623
ATTN: KARL STOUT

PARKER AND PINE CONDOMINIUM PLAT BUILDING #4

A PART OF LOT 3, PARKER AND PINE FILING 2 •
SITUATED IN THE SE 1/4 OF SECTION 9 AND THE SW 1/4 OF SECTION 10, T.6S., R.66W. OF THE 6TH P.M.
TOWN OF PARKER, COUNTY OF DOUGLAS, STATE OF COLORADO

9554 TWENTY MILE ROAD

typical question - are each of the patios shown on these sheets GCE, LCE or part of the actual units? show a label to be more clear



3 LEVEL 3 FLOORPLAN
SCALE: 1/8" = 1'-0"



LEGEND

G.C.E.	GENERAL COMMON ELEMENT
L.C.E.	LIMITED COMMON ELEMENT

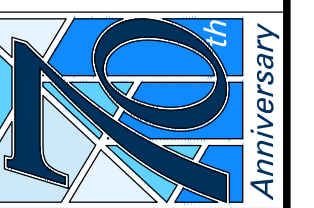
GENERAL NOTES:

ALL LINENWORK DEPICTING INTERIOR IMPROVEMENTS THAT ARE WITHIN AND PART OF A UNIT SHOWN HEREON ARE PER THE ARCHITECTURAL DESIGN PROVIDED BY SEBRE ARCHITECTS, INC. AND MAY NOT REPRESENT THE ACTUAL LOCATIONS OF SUCH INTERIOR IMPROVEMENTS.



LEVEL 3 FLOORPLAN
PARKER AND PINE CONDOMINIUM PLAT - BUILDING #4
A PART OF LOT 3, PARKER AND PINE FILING 2
SITUATED IN THE SE 1/4 OF SECTION 9 AND THE SW 1/4 OF SECTION 10, T.6S., R.66W. OF THE 6TH P.M.
TOWN OF PARKER, COUNTY OF DOUGLAS, STATE OF COLORADO
9554 TWENTY MILE ROAD

ES&C Team: CMB, JDP
Date: 8/24/2024
Survey No.: 23-025-CM
Scale: 1/8" = 1'-0"



ES&C ENGINEERING SERVICE COMPANY
Creative Solutions Since 1954
CIVIL ENGINEERS | LAND SURVEYORS

14190 East Evans Avenue
Aurora, Colorado 80014
engineering@esandc.com
P 303.337.1393
F 303.337.7481
T/F 1.877.273.0659

No.: 1

Description: 1 INITIAL CONDO MAP SUBMITTAL

Date: 8/24/2024

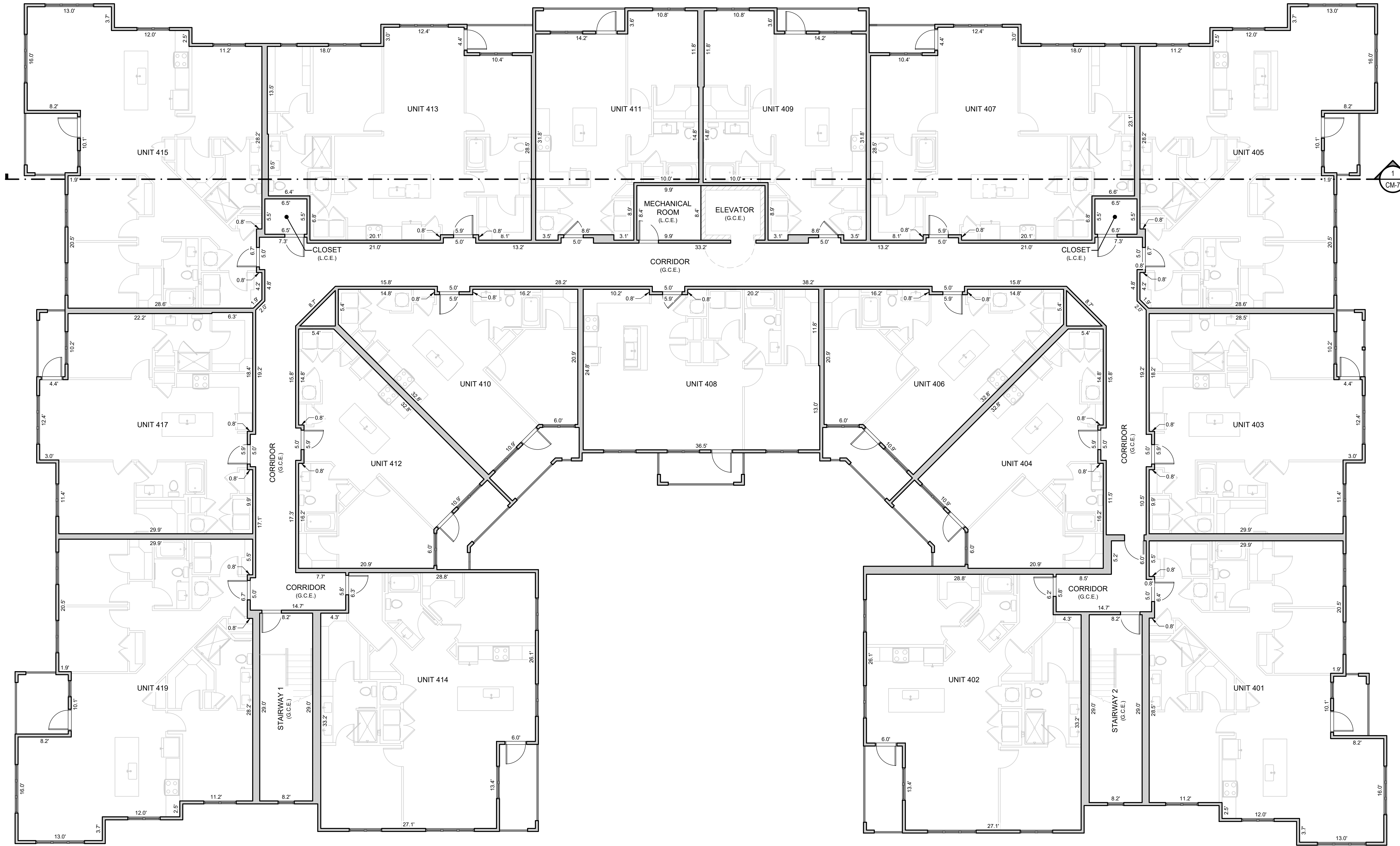
Client:

THE GARRETT COMPANIES
10375 PARK MEADOWS DRIVE, SUITE 125
LONG TREE, COLORADO 80124
TEL: 303.423.4223
ATTN: KARL STOUT

Sheet No.: **CM-5**

PARKER AND PINE CONDOMINIUM PLAT BUILDING #4

A PART OF LOT 3, PARKER AND PINE FILING 2*
SITUATED IN THE SE 1/4 OF SECTION 9 AND THE SW 1/4 OF SECTION 10, T.6S., R.66W. OF THE 6TH P.M.
TOWN OF PARKER, COUNTY OF DOUGLAS, STATE OF COLORADO
9554 TWENTY MILE ROAD



LEVEL 4 FLOORPLAN
SCALE: 1/8" = 1'-0"



LEGEND

G.C.E.	GENERAL COMMON ELEMENT
L.C.E.	LIMITED COMMON ELEMENT

GENERAL NOTES:

ALL LINENWORK DEPICTING INTERIOR IMPROVEMENTS THAT ARE WITHIN AND PART OF A UNIT SHOWN HEREON ARE PER THE ARCHITECTURAL DESIGN PROVIDED BY SEBRE ARCHITECTS, INC. AND MAY NOT REPRESENT THE ACTUAL LOCATIONS OF SUCH INTERIOR IMPROVEMENTS.



LEVEL 4 FLOORPLAN

PARKER AND PINE CONDOMINIUM PLAT - BUILDING #4
A PART OF LOT 3, PARKER AND PINE FILING 2*
SITUATED IN THE SE 1/4 OF SECTION 9 AND THE SW 1/4 OF SECTION 10, T.6S., R.66W. OF THE 6TH P.M.
TOWN OF PARKER, COUNTY OF DOUGLAS, STATE OF COLORADO
9554 TWENTY MILE ROAD

ES&C Team:	CMB, JDP	Date:	8/24/2024
Survey No.:	23-025-CM	Scale:	1/8" = 1'-0"
Sheet No.:	CM-6		



ES&C ENGINEERING SERVICE COMPANY
14190 East Evans Avenue
Aurora, Colorado 80014
P 303.337.1393
F 303.337.7481
T/F 1.877.273.0659

No.:

Description:

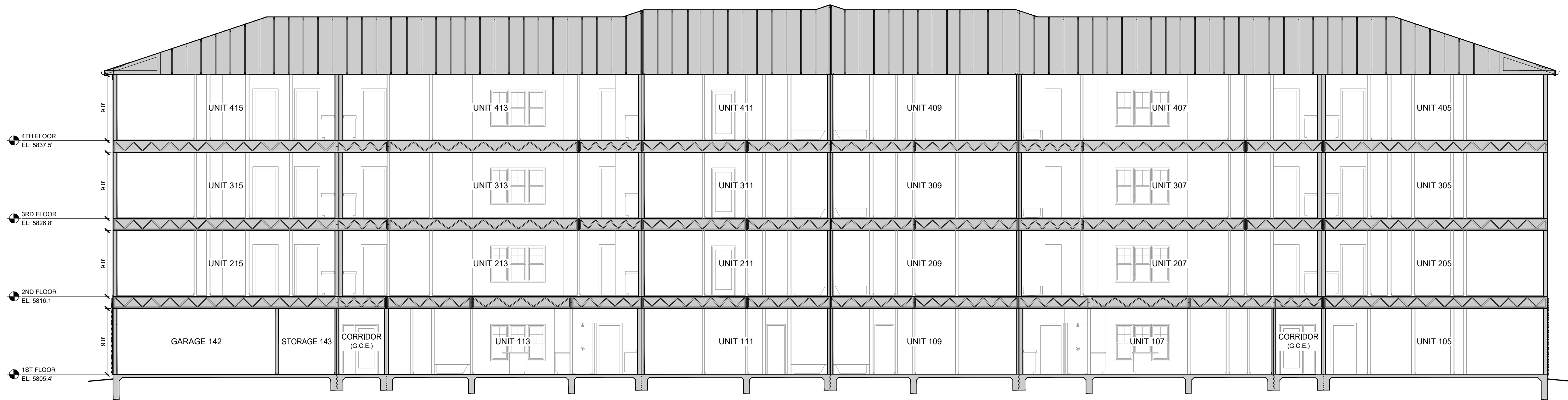
Date:

Client:

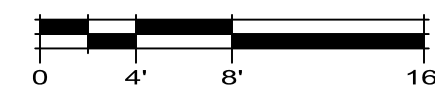
THE GARRETT COMPANIES
10375 PARK MEADOWS DRIVE, SUITE 125
LONG TREE, COLORADO 80124
ATTN: KARL STOUT

PARKER AND PINE CONDOMINIUM PLAT BUILDING #4

A PART OF LOT 3, PARKER AND PINE FILING 2 •
SITUATED IN THE SE 1/4 OF SECTION 9 AND THE SW 1/4 OF SECTION 10, T.6S., R.66W. OF THE 6TH P.M.
TOWN OF PARKER, COUNTY OF DOUGLAS, STATE OF COLORADO
9554 TWENTY MILE ROAD



1 BUILDING SECTION
SCALE: 1/8" = 1'-0"



LEGEND

G.C.E.	GENERAL COMMON ELEMENT
L.C.E.	LIMITED COMMON ELEMENT

GENERAL NOTES:

ALL LINEWORK DEPICTING INTERIOR IMPROVEMENTS THAT ARE WITHIN AND PART OF A UNIT SHOWN HEREON ARE PER THE ARCHITECTURAL DESIGN PROVIDED BY SEBREE ARCHITECTS, INC. AND MAY NOT REPRESENT THE ACTUAL LOCATIONS OF SUCH INTERIOR IMPROVEMENTS.



BUILDING SECTIONS
PARKER AND PINE CONDOMINIUM PLAT - BUILDING #4
A PART OF LOT 3, PARKER AND PINE FILING 2
SITUATED IN THE SE 1/4 OF SECTION 9 AND THE SW 1/4 OF SECTION 10, T.6S., R.66W. OF THE 6TH P.M.
TOWN OF PARKER, COUNTY OF DOUGLAS, STATE OF COLORADO
9554 TWENTY MILE ROAD

ES&C Team: CNB, JDP
Survey No.: 23-025-CM
Scale: 1/8" = 1'-0"
Date: 8/24/2024
Sheet No.: **CM-7**

ES&C ENGINEERING SERVICE COMPANY
14190 East Evans Avenue
Aurora, Colorado 80014
engineer@esandc.com
P 303.337.1393
F 303.337.7481
T/F 1.877.273.0659

70th Anniversary
Creative Solutions Since 1954
CIVIL ENGINEERS | LAND SURVEYORS

THE GARRETT COMPANIES
10375 PARK MEADOWS DRIVE, SUITE 125
LONG TREE, COLORADO 80124
ATTN: KARL STOUT

No.	Description	Date
1	INITIAL CONDO MAP SUBMITTAL	8/24/2024

P:\Projects\2023\23-025-CM\23-025-CM.dwg - Parker and Pine Condominium Plat - Building #4 - 8/24/2024 - 10:00 AM - JDP