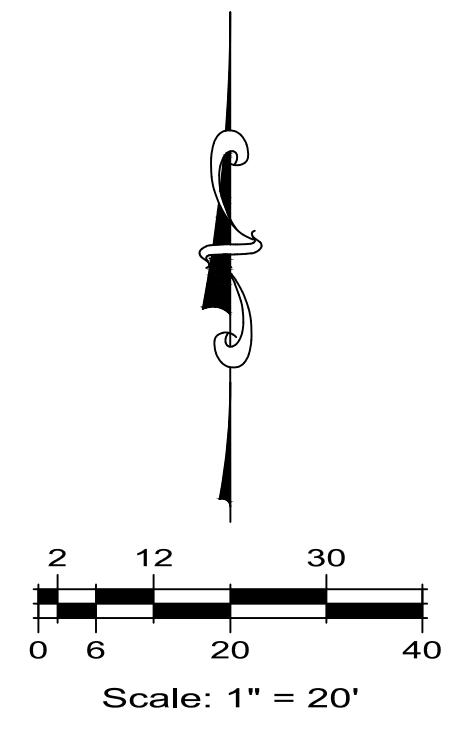


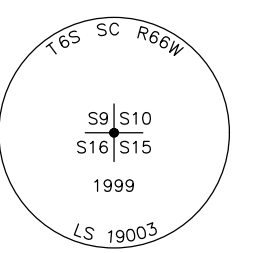
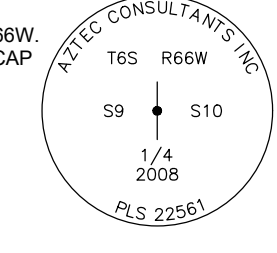
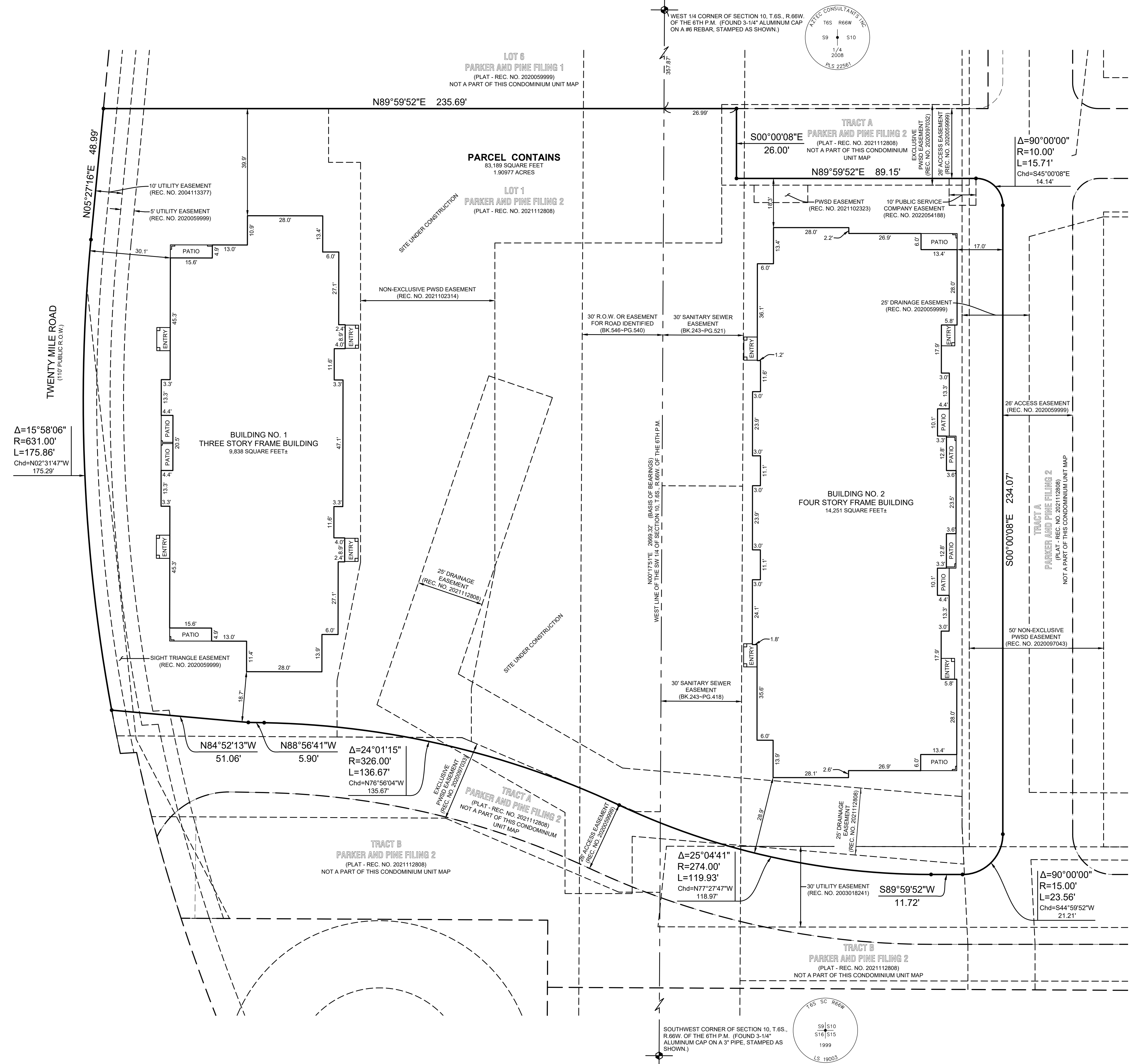
PARKER AND PINE CONDOMINIUM PLAT BUILDINGS 1 & 2

LOT 1, PARKER AND PINE FILING 2
SITUATED IN THE SE 1/4 OF SECTION 9 AND THE SW 1/4 OF SECTION 10, T.6S., R.66W. OF THE 6TH P.M.
TOWN OF PARKER, COUNTY OF DOUGLAS, STATE OF COLORADO
59 UNITS
SHEET 2 OF 10

PARKER
REGISTRY
APPROVED DATE: 09/27/2024
Planning Approval By: A. Chasz



LEGEND	
REC. NO.	RECEPTION NUMBER
	ALIQUOT CORNER
	NO MONUMENT FOUND OR SET



LIMITED IMPROVEMENT SURVEY PARKER AND PINE CONDOMINIUM PLAT - BUILDINGS 1 & 2 LOT 1, PARKER AND PINE FILING 2 SITUATED IN THE SE 1/4 OF SECTION 9 AND THE SW 1/4 OF SECTION 10, T.6S., R.66W. OF THE 6TH P.M. TOWN OF PARKER, COUNTY OF DOUGLAS, STATE OF COLORADO 9540 TWENTY MILE ROAD	
ESC Team: CNR, JDP Survey No.: 23-025-CM Sheet No.: 2 OF 10	Date: 8/22/2024 Scale: 1" = 20' Description: 1 INITIAL CONDO MAP SUBMITTAL 2 SECOND CONDO MAP SUBMITTAL Client: THE GARRETT COMPANIES 10375 PARK MEADOWS DRIVE, SUITE 125 LONG TREE, COLORADO 80124 ATTN: KARL STOUT

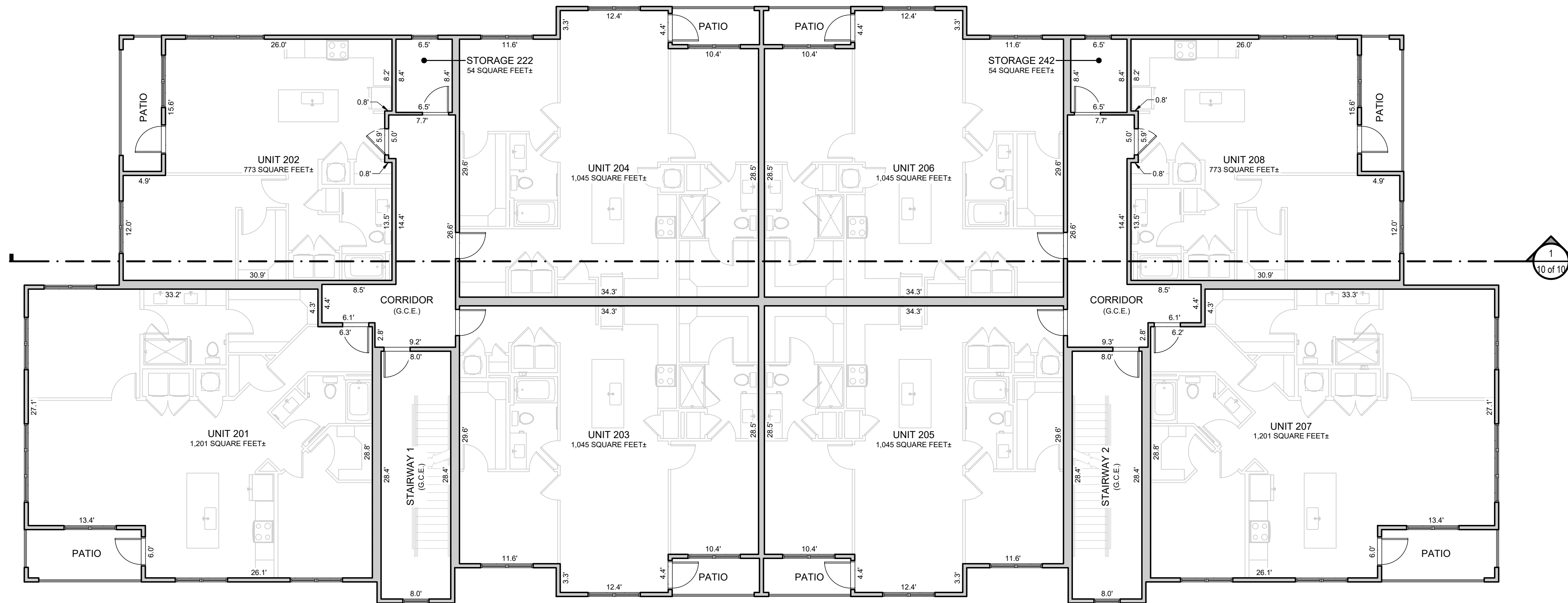


File Name: M:\Projects\The Garrett Condominium Plat and Pine Filing 2\Drawings\23-025-CM\Map\MapSheet 2.dwg
 Plot Date: 8/22/2024
 Company: ESC

PARKER AND PINE CONDOMINIUM PLAT BUILDINGS 1 & 2

LOT 1, PARKER AND PINE FILING 2
SITUATED IN THE SE 1/4 OF SECTION 9 AND THE SW 1/4 OF SECTION 10, T.6S., R.66W. OF THE 6TH P.M.
TOWN OF PARKER, COUNTY OF DOUGLAS, STATE OF COLORADO
59 UNITS
SHEET 4 OF 10

PARKER
PLAT
APPROVED DATE: 09/27/2024
Planning Approval By: A. Chasz



2 BUILDING 1 - LEVEL 2 FLOORPLAN
SCALE: 1/8" = 1'-0"



LEGEND

G.C.E.	GENERAL COMMON ELEMENT
L.C.E.	LIMITED COMMON ELEMENT

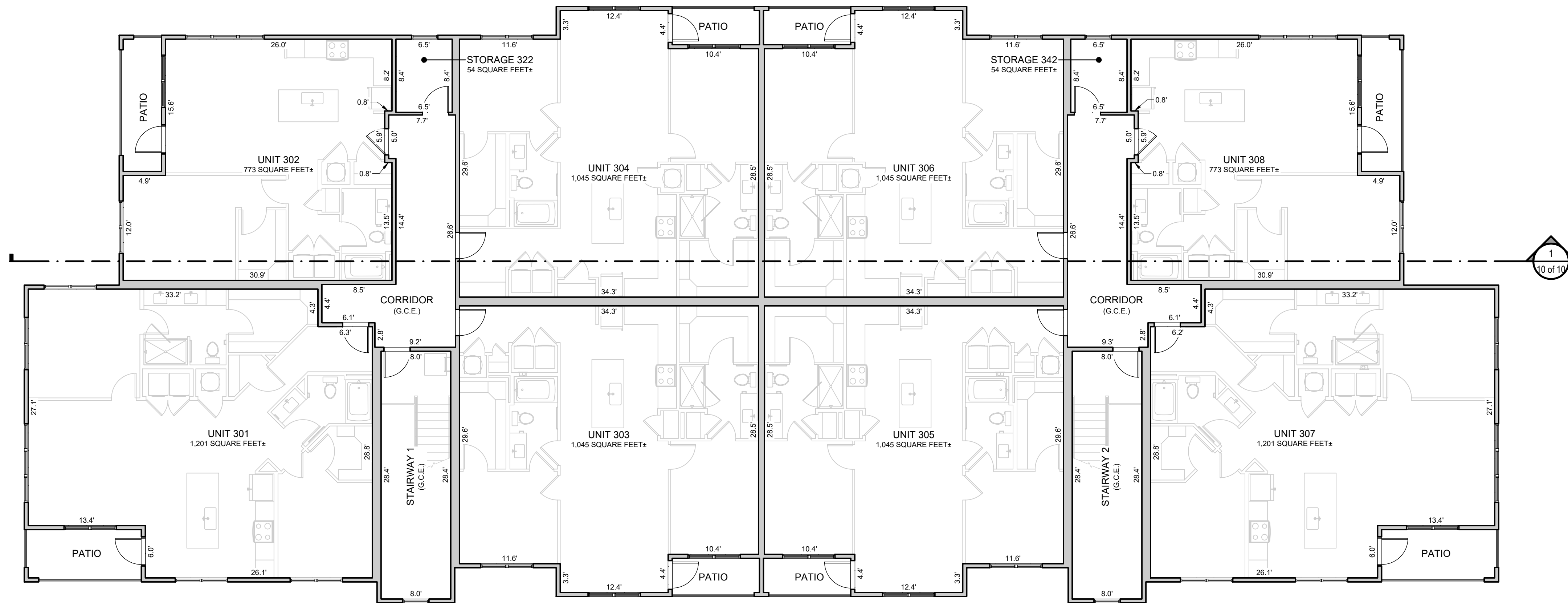
GENERAL NOTES:
ALL LINENWORK DEPICTING INTERIOR IMPROVEMENTS THAT ARE WITHIN AND PART OF A UNIT SHOWN HEREON ARE PER THE ARCHITECTURAL DESIGN PROVIDED BY SEBRE ARCHITECTS, INC. AND MAY NOT REPRESENT THE ACTUAL LOCATIONS OF SUCH INTERIOR IMPROVEMENTS.



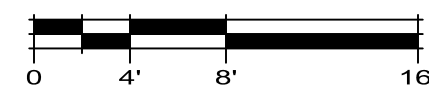
Client:	THE GARRETT COMPANIES 10375 PARK MEADOWS DRIVE, SUITE 125 LONG TREE, COLORADO 80124 ATTN: KARL STOUT		
Date:	02/29/2024	Description:	INITIAL CONDO MAP SUBMITTAL
No.:	2	Description:	SECOND CONDO MAP SUBMITTAL
ES&C	ENGINEERING SERVICE COMPANY 14190 East Evans Avenue Aurora, Colorado 80014 engineering@esandc.com P 303.337.1383 F 303.337.7481 T/F 1.877.273.0659 CIVIL ENGINEERS LAND SURVEYORS		
70th Anniversary	BUILDING 1 - LEVEL 2 FLOORPLAN PARKER AND PINE CONDOMINIUM PLAT - BUILDINGS 1 & 2 LOT 1, PARKER AND PINE FILING 2 SITUATED IN THE SE 1/4 OF SECTION 9 AND THE SW 1/4 OF SECTION 10, T.6S., R.66W. OF THE 6TH P.M. TOWN OF PARKER, COUNTY OF DOUGLAS, STATE OF COLORADO 9540 TWENTY MILE ROAD		
ES&C Team:	CMB, JDP	Date:	8/22/2024
Survey No.:	23-025-CM	Scale:	1/8" = 1'-0"
Sheet No.:	4 OF 10		

PARKER AND PINE CONDOMINIUM PLAT BUILDINGS 1 & 2

LOT 1, PARKER AND PINE FILING 2
SITUATED IN THE SE 1/4 OF SECTION 9 AND THE SW 1/4 OF SECTION 10, T.6S., R.66W. OF THE 6TH P.M.
TOWN OF PARKER, COUNTY OF DOUGLAS, STATE OF COLORADO
59 UNITS
SHEET 5 OF 10



BUILDING 1 - LEVEL 3 FLOORPLAN
SCALE: 1/8" = 1'-0"



LEGEND

G.C.E.	GENERAL COMMON ELEMENT
L.C.E.	LIMITED COMMON ELEMENT

GENERAL NOTES:

ALL LINENWORK DEPICTING INTERIOR IMPROVEMENTS THAT ARE WITHIN AND PART OF A UNIT SHOWN HEREON ARE PER THE ARCHITECTURAL DESIGN PROVIDED BY SEBREE ARCHITECTS, INC. AND MAY NOT REPRESENT THE ACTUAL LOCATIONS OF SUCH INTERIOR IMPROVEMENTS.



BUILDING 1 - LEVEL 3 FLOORPLAN
PARKER AND PINE CONDOMINIUM PLAT - BUILDINGS 1 & 2
LOT 1, PARKER AND PINE FILING 2
SITUATED IN THE SE 1/4 OF SECTION 9 AND THE SW 1/4 OF SECTION 10, T.6S., R.66W. OF THE 6TH P.M.
TOWN OF PARKER, COUNTY OF DOUGLAS, STATE OF COLORADO
9540 TWENTY MILE ROAD

ESC ENGINEERING SERVICE COMPANY
CREATIVE SOLUTIONS SINCE 1954
CIVIL ENGINEERS | LAND SURVEYORS

14190 East Evans Avenue
Aurora, Colorado 80014
engineering@esc-co.com
P 303.337.1383
F 303.337.7481
T/F 1.877.273.0659

No.	Description	Date
1	INITIAL CONDO MAP SUBMITTAL	6/29/2024
2	SECOND CONDO MAP SUBMITTAL	8/22/2024

Client:
THE GARRETT COMPANIES
10375 PARK MEADOWS DRIVE, SUITE 125
LONG TREE, COLORADO 80124
ATTN: KARL STOUT

PARKER AND PINE CONDOMINIUM PLAT BUILDINGS 1 & 2

LOT 1, PARKER AND PINE FILING 2
SITUATED IN THE SE 1/4 OF SECTION 9 AND THE SW 1/4 OF SECTION 10, T.6S., R.66W. OF THE 6TH P.M.
TOWN OF PARKER, COUNTY OF DOUGLAS, STATE OF COLORADO
59 UNITS
SHEET 6 OF 10



BUILDING 2 - LEVEL 1 FLOORPLAN
SCALE: 1/8" = 1'-0"



LEGEND

G.C.E.	GENERAL COMMON ELEMENT
L.C.E.	LIMITED COMMON ELEMENT

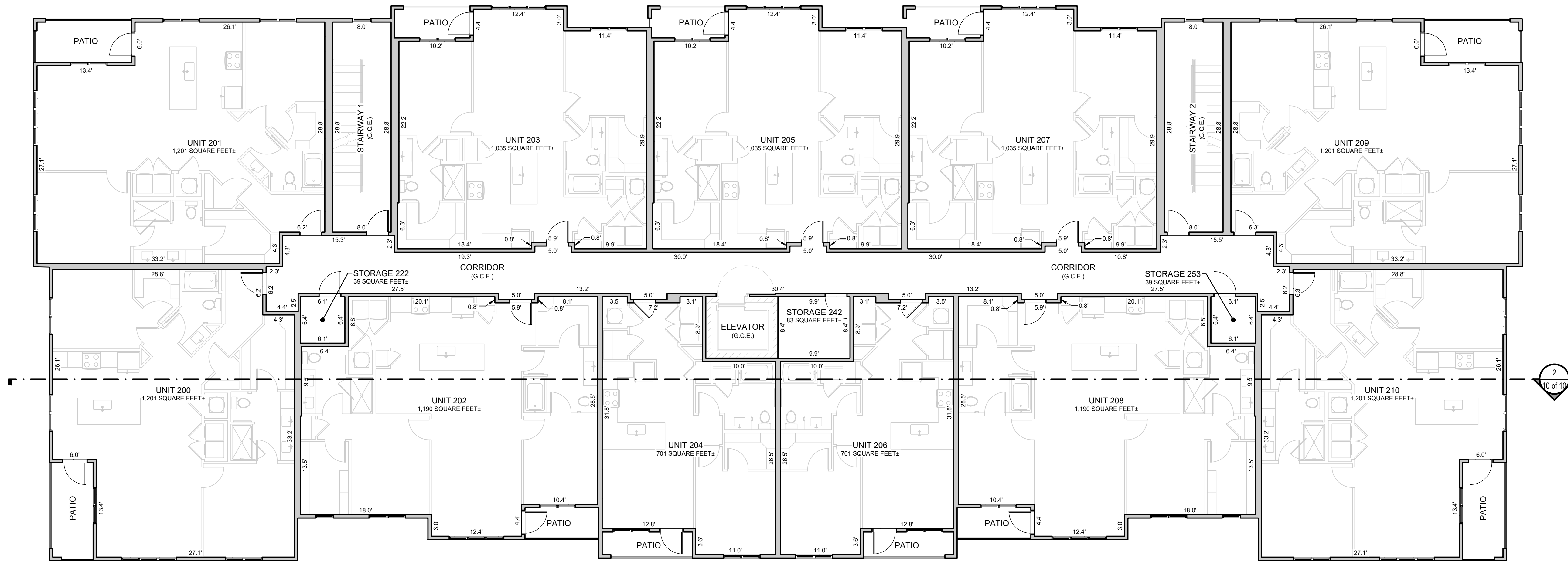
GENERAL NOTES:
ALL LINENWORK DEPICTING INTERIOR IMPROVEMENTS THAT ARE WITHIN AND PART OF A UNIT SHOWN HEREON ARE PER THE ARCHITECTURAL DESIGN PROVIDED BY SEBRE ARCHITECTS, INC. AND MAY NOT REPRESENT THE ACTUAL LOCATIONS OF SUCH INTERIOR IMPROVEMENTS.



<p>THE GARRETT COMPANIES 10375 PARK MEADOWS DRIVE, SUITE 125 LONG TREE, COLORADO 80124 ATTN: KARL STOUT</p>	
<p>ES&C ENGINEERING SERVICE COMPANY 14190 Eriet Evans Avenue Aurora, Colorado 80014 P 303.337.1393 F 303.337.7481 T/F 1.877.273.0659</p>	<p>70th Anniversary</p>
<p>BUILDING 2 - LEVEL 1 FLOORPLAN PARKER AND PINE CONDOMINIUM PLAT - BUILDINGS 1 & 2 LOT 1, PARKER AND PINE FILING 2 SITUATED IN THE SE 1/4 OF SECTION 9 AND THE SW 1/4 OF SECTION 10, T.6S., R.66W. OF THE 6TH P.M. TOWN OF PARKER, COUNTY OF DOUGLAS, STATE OF COLORADO 9540 TWENTY MILE ROAD</p>	<p>ES&C Team: CNB, JDP Date: 8/22/2024 Survey No.: 23-025-CM Scale: 1/8" = 1'-0" Sheet No.: 6 OF 10</p>
<p>Client: Date: 8/29/2024 Description: 1 INITIAL CONDO MAP SUBMITTAL 2 SECOND CONDO MAP SUBMITTAL</p>	<p>NO.: 1 2</p>

PARKER AND PINE CONDOMINIUM PLAT BUILDINGS 1 & 2

LOT 1, PARKER AND PINE FILING 2
SITUATED IN THE SE 1/4 OF SECTION 9 AND THE SW 1/4 OF SECTION 10, T.6S., R.66W. OF THE 6TH P.M.
TOWN OF PARKER, COUNTY OF DOUGLAS, STATE OF COLORADO
59 UNITS
SHEET 7 OF 10



BUILDING 2 - LEVEL 2 FLOORPLAN
SCALE: 1/8" = 1'-0"



LEGEND

G.C.E.	GENERAL COMMON ELEMENT
L.C.E.	LIMITED COMMON ELEMENT

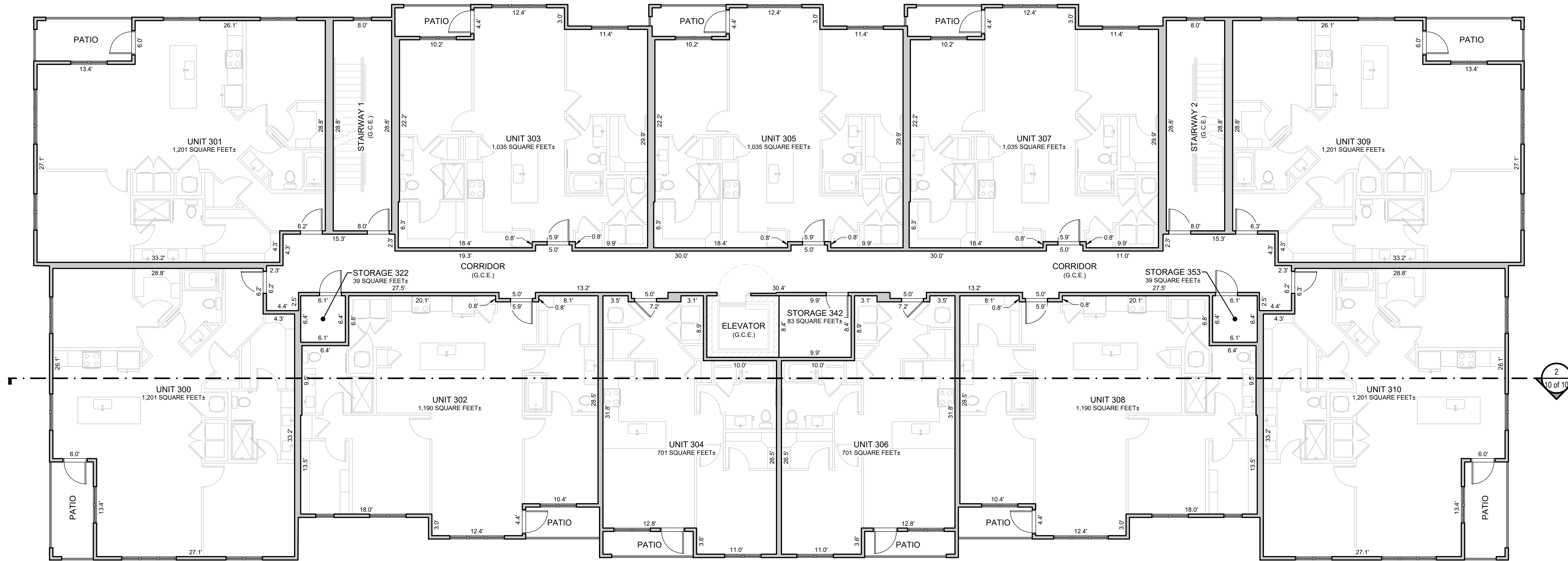
GENERAL NOTES:
ALL LINENWORK DEPICTING INTERIOR IMPROVEMENTS THAT ARE WITHIN AND PART OF A UNIT SHOWN HEREON ARE PER THE ARCHITECTURAL DESIGN PROVIDED BY SEBRE ARCHITECTS, INC. AND MAY NOT REPRESENT THE ACTUAL LOCATIONS OF SUCH INTERIOR IMPROVEMENTS.



Client:	THE GARRETT COMPANIES 10375 PARK MEADOWS DRIVE, SUITE 125 LONG TREE, COLORADO 80124 ATTN: KARL STOUT	Date:	8/29/2024
Description:	INITIAL CONDO MAP SUBMITTAL	No.:	1
	SECOND CONDO MAP SUBMITTAL	No.:	2
ES&C ENGINEERING SERVICE COMPANY	14190 East Evans Avenue Aurora, Colorado 80014 engineering@esandc.com P 303.337.1383 F 303.337.7481 T/F 1.877.273.0659	ES&C 70th Anniversary	
BUILDING 2 - LEVEL 2 FLOORPLAN PARKER AND PINE CONDOMINIUM PLAT - BUILDINGS 1 & 2 SITUATED IN THE SE 1/4 OF SECTION 9 AND THE SW 1/4 OF SECTION 10, T.6S., R.66W. OF THE 6TH P.M. TOWN OF PARKER, COUNTY OF DOUGLAS, STATE OF COLORADO 9540 TWENTY MILE ROAD			
ES&C Team:	CNR, JDP	Date:	8/22/2024
Survey No.:	23-025-CM	Scale:	1/8" = 1'-0"
Sheet No.:			7 OF 10

PARKER AND PINE CONDOMINIUM PLAT BUILDINGS 1 & 2

LOT 1, PARKER AND PINE FILING 2
SITUATED IN THE SE 1/4 OF SECTION 9 AND THE SW 1/4 OF SECTION 10, T.6S., R.66W. OF THE 6TH P.M.
TOWN OF PARKER, COUNTY OF DOUGLAS, STATE OF COLORADO
59 UNITS
SHEET 8 OF 10



BUILDING 2 - LEVEL 3 FLOORPLAN
SCALE: 1/8" = 1'-0"



LEGEND

G.C.E.	GENERAL COMMON ELEMENT
L.C.E.	LIMITED COMMON ELEMENT

GENERAL NOTES:
ALL LINENWORK DEPICTING INTERIOR IMPROVEMENTS THAT ARE WITHIN AND PART OF A UNIT SHOWN HEREON ARE PER THE ARCHITECTURAL DESIGN PROVIDED BY SEBREE ARCHITECTS, INC. AND MAY NOT REPRESENT THE ACTUAL LOCATIONS OF SUCH INTERIOR IMPROVEMENTS.



<p>ES&C ENGINEERING SERVICE COMPANY Creative Solutions Since 1954 CIVIL ENGINEERS LAND SURVEYORS</p>		<p>THE GARRETT COMPANIES 10375 PARK MEADOWS DRIVE, SUITE 125 LONG TREE, COLORADO 80124 ATTN: KARL STOUT</p>
<p>Client:</p>	<p>Date:</p>	<p>8/22/2024</p>
<p>No.:</p>	<p>Description:</p>	<p>1 INITIAL CONDO MAP SUBMITTAL</p> <p>2 SECOND CONDO MAP SUBMITTAL</p>
<p>14190 East Evans Avenue Aurora, Colorado 80014 engineering@esandc.com P 303.337.1383 F 303.337.7481 T/F 1.877.273.0659</p>	<p>ES&C ENGINEERING SERVICE COMPANY</p>	<p>70th Anniversary</p>
<p>BUILDING 2 - LEVEL 3 FLOORPLAN PARKER AND PINE CONDOMINIUM PLAT - BUILDINGS 1 & 2 SITUATED IN THE SE 1/4 OF SECTION 9 AND THE SW 1/4 OF SECTION 10, T.6S., R.66W. OF THE 6TH P.M. TOWN OF PARKER, COUNTY OF DOUGLAS, STATE OF COLORADO 9540 TWENTY MILE ROAD</p>	<p>ES&C Team: CNR, JDP</p>	<p>Date: 8/22/2024</p>
<p>Survey No.: 23-025-CM</p>	<p>Scale: 1/8" = 1'-0"</p>	<p>Sheet No.: 8 OF 10</p>

PARKER AND PINE CONDOMINIUM PLAT BUILDINGS 1 & 2

LOT 1, PARKER AND PINE FILING 2
SITUATED IN THE SE 1/4 OF SECTION 9 AND THE SW 1/4 OF SECTION 10, T.6S., R.66W. OF THE 6TH P.M.
TOWN OF PARKER, COUNTY OF DOUGLAS, STATE OF COLORADO
59 UNITS
SHEET 9 OF 10



BUILDING 2 - LEVEL 4 FLOORPLAN
SCALE: 1/8" = 1'-0"



LEGEND

G.C.E.	GENERAL COMMON ELEMENT
L.C.E.	LIMITED COMMON ELEMENT

GENERAL NOTES:

ALL LINENWORK DEPICTING INTERIOR IMPROVEMENTS THAT ARE WITHIN AND PART OF A UNIT SHOWN HEREON ARE PER THE ARCHITECTURAL DESIGN PROVIDED BY SEBRE ARCHITECTS, INC. AND MAY NOT REPRESENT THE ACTUAL LOCATIONS OF SUCH INTERIOR IMPROVEMENTS.



ES&C
ENGINEERING
COMPANY
Creative Solutions Since 1954
CIVIL ENGINEERS | LAND SURVEYORS

14190 East Evans Avenue
Aurora, Colorado 80014
engineering@esandc.com
P 303.337.1383
F 303.337.7481
T/F 1.877.273.0659

BUILDING 2 - LEVEL 4 FLOORPLAN
PARKER AND PINE CONDOMINIUM PLAT - BUILDINGS 1 & 2
SITUATED IN THE SE 1/4 OF SECTION 9 AND THE SW 1/4 OF SECTION 10, T.6S., R.66W. OF THE 6TH P.M.
TOWN OF PARKER, COUNTY OF DOUGLAS, STATE OF COLORADO
9540 TWENTY MILE ROAD

THE GARRETT COMPANIES
10375 PARK MEADOWS DRIVE, SUITE 125
LONG TREE, COLORADO 80124
ATTN: KARL STOUT

No.	Description	Date
1	INITIAL CONDO MAP SUBMITTAL	8/29/2024
2	SECOND CONDO MAP SUBMITTAL	8/22/2024

PARKER AND PINE CONDOMINIUM PLAT BUILDINGS 1 & 2

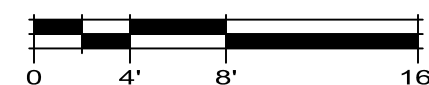
LOT 1, PARKER AND PINE FILING 2
SITUATED IN THE SE 1/4 OF SECTION 9 AND THE SW 1/4 OF SECTION 10, T.6S., R.66W. OF THE 6TH P.M.
TOWN OF PARKER, COUNTY OF DOUGLAS, STATE OF COLORADO
59 UNITS
SHEET 10 OF 10



1 BUILDING 1 SECTION
SCALE: 1/8" = 1'-0"



2 BUILDING 2 SECTION
SCALE: 1/8" = 1'-0"



LEGEND

G.C.E.	GENERAL COMMON ELEMENT
L.C.E.	LIMITED COMMON ELEMENT

GENERAL NOTES:

ALL LINENWORK DEPICTING INTERIOR IMPROVEMENTS THAT ARE WITHIN AND PART OF A UNIT SHOWN HEREON ARE PER THE ARCHITECTURAL DESIGN PROVIDED BY SEBRE ARCHITECTS, INC. AND MAY NOT REPRESENT THE ACTUAL LOCATIONS OF SUCH INTERIOR IMPROVEMENTS.



<p>ES&C ENGINEERING SERVICE COMPANY Creative Solutions Since 1954 CIVIL ENGINEERS LAND SURVEYORS</p>		<p>14190 East Evans Avenue Aurora, Colorado 80014 P 303.337.1383 F 303.337.7481 T/F 1.877.273.0659</p>
<p>70th Anniversary</p>	<p>Client: THE GARRETT COMPANIES 10375 PARK MEADOWS DRIVE, SUITE 125 LONG TREE, COLORADO 80124 ATTN: KARL STOUT</p>	<p>Date: 8/28/2024</p>
<p>Description: 1 INITIAL CONDO MAP SUBMITTAL 2 SECOND CONDO MAP SUBMITTAL</p>	<p>No.: 1 2</p>	<p>Date: 8/28/2024</p>
<p>ES&C ENGINEERING SERVICE COMPANY PARKER AND PINE CONDOMINIUM PLAT - BUILDINGS 1 & 2 LOT 1, PARKER AND PINE FILING 2 SITUATED IN THE SE 1/4 OF SECTION 9 AND THE SW 1/4 OF SECTION 10, T.6S., R.66W. OF THE 6TH P.M. TOWN OF PARKER, COUNTY OF DOUGLAS, STATE OF COLORADO 9540 TWENTY MILE ROAD</p>		
<p>ES&C Team: CNB, JDP Date: 8/22/2024 Survey No.: 23-025-CM Scale: 1/8" = 1'-0" Sheet No.: 10 OF 10</p>		