

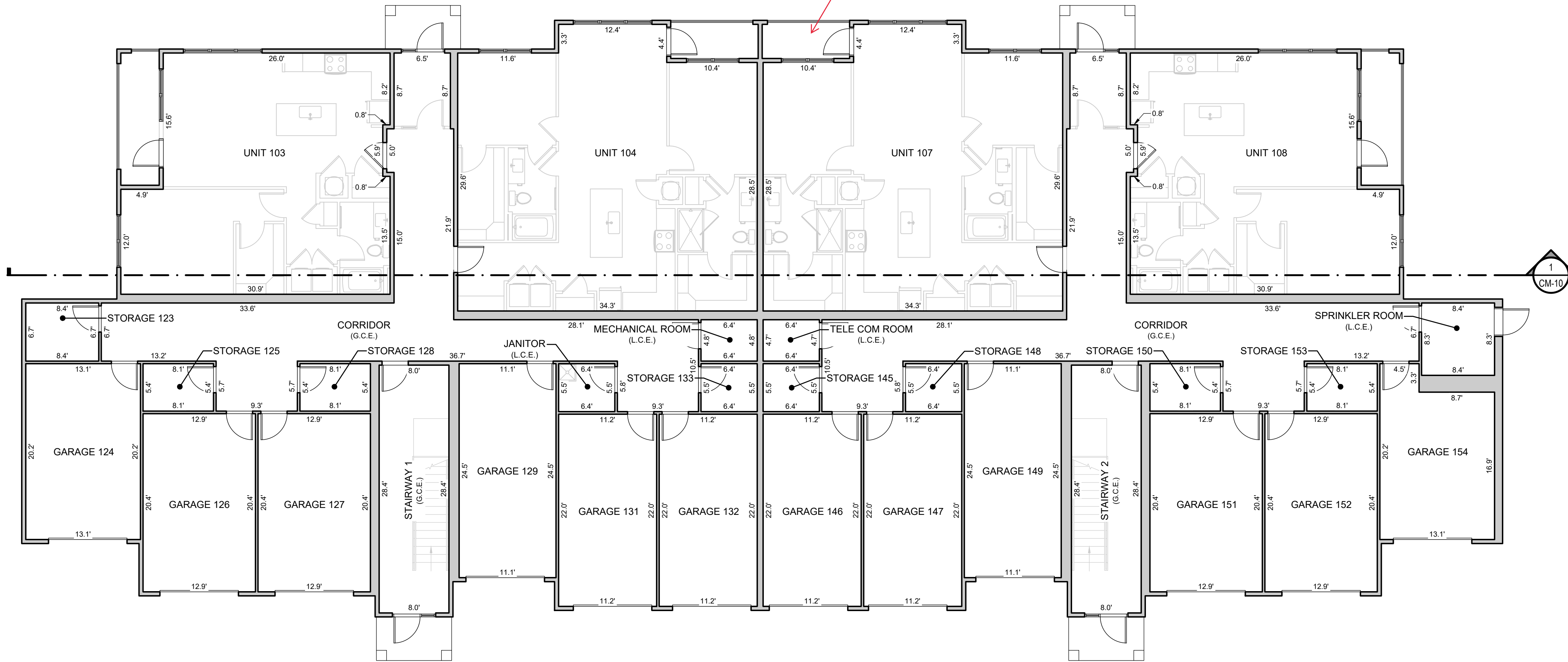




# PARKER AND PINE CONDOMINIUM PLAT BUILDINGS 1 & 2

A PART OF LOT 1, PARKER AND PINE FILING 2 •  
SITUATED IN THE SE 1/4 OF SECTION 9 AND THE SW 1/4 OF SECTION 10, T.6S., R.66W. OF THE 6TH P.M.  
TOWN OF PARKER, COUNTY OF DOUGLAS, STATE OF COLORADO  
9540 TWENTY MILE ROAD

are these areas  
G.C.E., L.C.E., or part  
of the condominium  
unit? (typical  
comment for all  
sheets)



**1 BUILDING 1 - LEVEL 1 FLOORPLAN**  
SCALE: 1/8" = 1'-0"



### LEGEND

G.C.E.	GENERAL COMMON ELEMENT
L.C.E.	LIMITED COMMON ELEMENT

### GENERAL NOTES:

ALL LINENWORK DEPICTING INTERIOR IMPROVEMENTS THAT ARE WITHIN AND PART OF A UNIT SHOWN HEREON ARE PER THE ARCHITECTURAL DESIGN PROVIDED BY SEBRE ARCHITECTS, INC. AND MAY NOT REPRESENT THE ACTUAL LOCATIONS OF SUCH INTERIOR IMPROVEMENTS.



**BUILDING 1 - LEVEL 1 FLOORPLAN**  
PARKER AND PINE CONDOMINIUM PLAT - BUILDINGS 1 & 2  
A PART OF LOT 1, PARKER AND PINE FILING 2  
SITUATED IN THE SE 1/4 OF SECTION 9 AND THE SW 1/4 OF SECTION 10, T.6S., R.66W. OF THE 6TH P.M.  
TOWN OF PARKER, COUNTY OF DOUGLAS, STATE OF COLORADO  
9540 TWENTY MILE ROAD

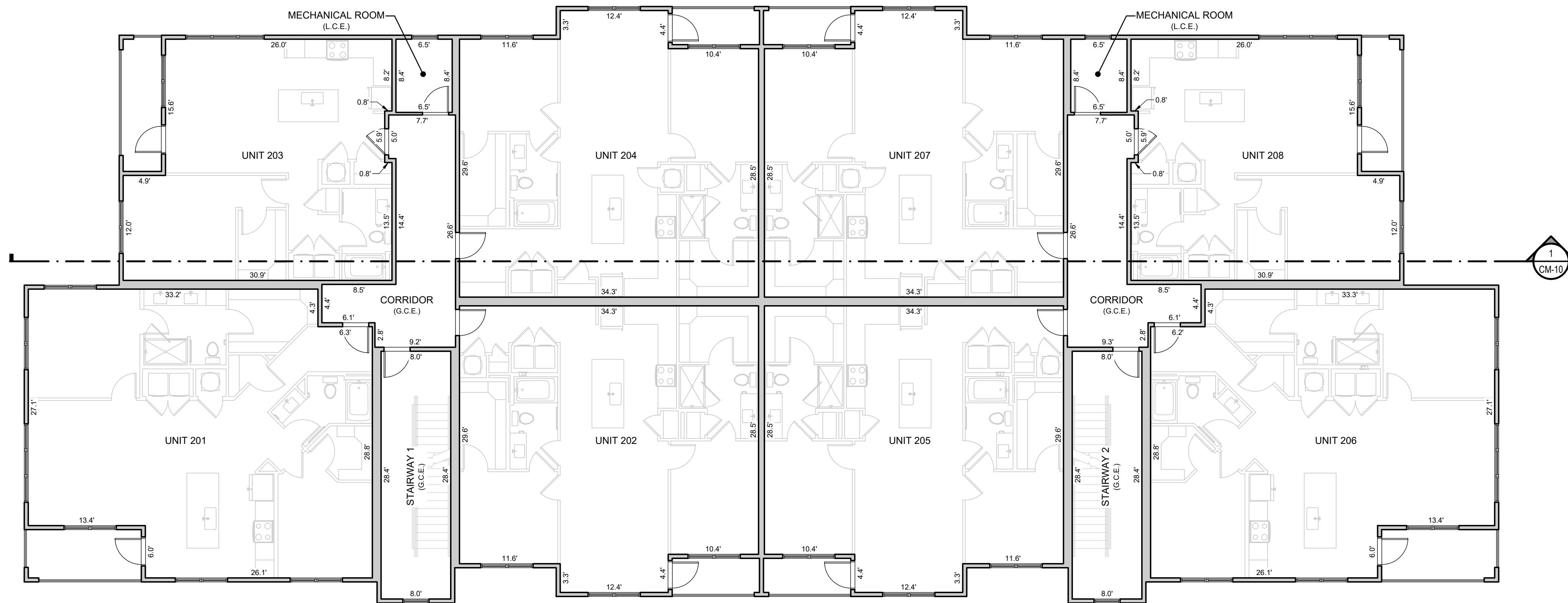
**ESC ENGINEERING SERVICE COMPANY**  
CREATIVE SOLUTIONS SINCE 1954  
CIVIL ENGINEERS | LAND SURVEYORS

14190 East Evans Avenue  
Aurora, Colorado 80014  
engineering@esc-co.com  
P 303.337.1383  
F 303.337.7481  
T/F 1.877.273.0659

No.	Description	Date	Client
1	INITIAL CONDO MAP SUBMITTAL	6/28/2024	THE GARRETT COMPANIES 10375 PARK MEADOWS DRIVE, SUITE 125 LONG TREE, COLORADO 80124 ATTN: KARL STOUT

# PARKER AND PINE CONDOMINIUM PLAT BUILDINGS 1 & 2

A PART OF LOT 1; PARKER AND PINE FILING 2 •  
SITUATED IN THE SE 1/4 OF SECTION 9 AND THE SW 1/4 OF SECTION 10, T.6S., R.66W. OF THE 6TH P.M.  
TOWN OF PARKER, COUNTY OF DOUGLAS, STATE OF COLORADO  
**9540 TWENTY MILE ROAD**



**2 BUILDING 1 - LEVEL 2 FLOORPLAN**  
SCALE: 1/8" = 1'-0"



**LEGEND**

G.C.E.	GENERAL COMMON ELEMENT
L.C.E.	LIMITED COMMON ELEMENT

**GENERAL NOTES:**

ALL LINENWORK DEPICTING INTERIOR IMPROVEMENTS THAT ARE WITHIN AND PART OF A UNIT SHOWN HEREON ARE PER THE ARCHITECTURAL DESIGN PROVIDED BY SEBRE ARCHITECTS, INC. AND MAY NOT REPRESENT THE ACTUAL LOCATIONS OF SUCH INTERIOR IMPROVEMENTS.



**BUILDING 1 - LEVEL 2 FLOORPLAN**

PARKER AND PINE CONDOMINIUM PLAT - BUILDINGS 1 & 2  
A PART OF LOT 1, PARKER AND PINE FILING 2  
SITUATED IN THE SE 1/4 OF SECTION 9 AND THE SW 1/4 OF SECTION 10, T.6S., R.66W. OF THE 6TH P.M.  
TOWN OF PARKER, COUNTY OF DOUGLAS, STATE OF COLORADO  
**9540 TWENTY MILE ROAD**

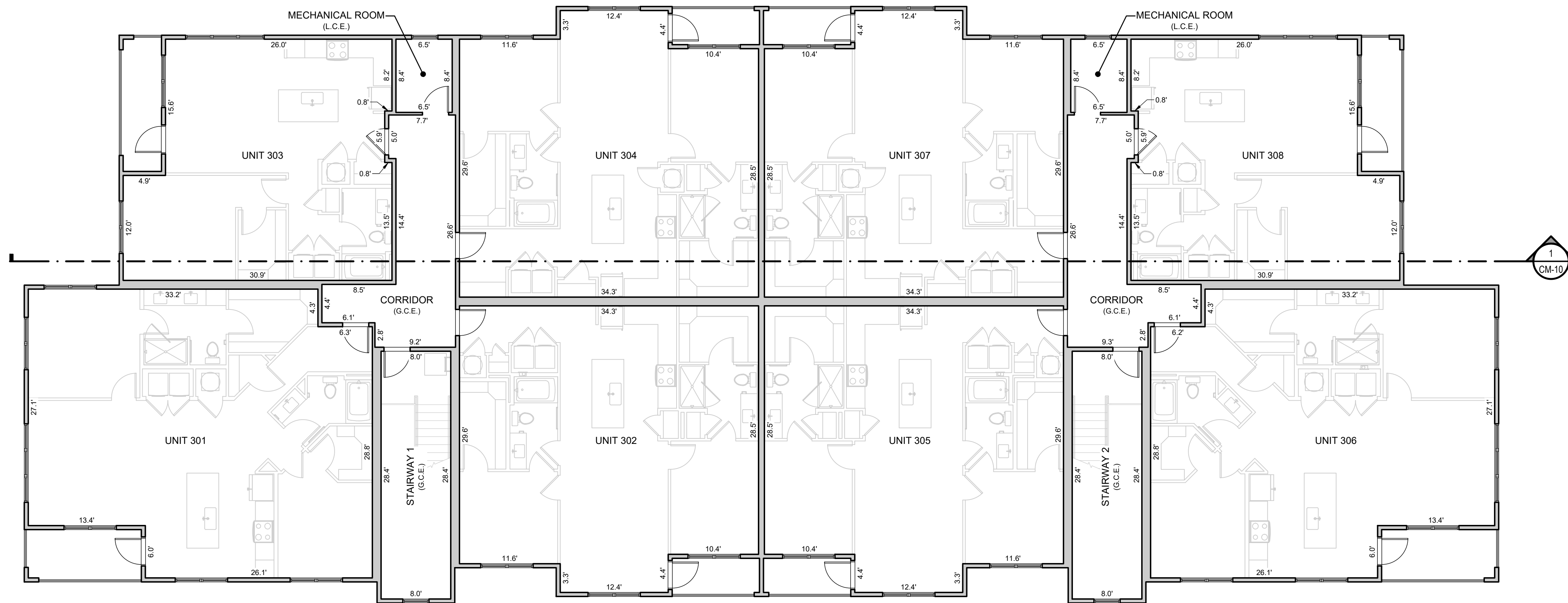
14190 East Evans Avenue  
Aurora, Colorado 80014  
engineering@esc.com  
P 303.337.1383  
F 303.337.7481  
T/F 1.877.273.0659

No.	Description	Date	Client
1	INITIAL CONDO MAP SUBMITTAL	6/28/2024	

**THE GARRETT COMPANIES**  
10375 PARK MEADOWS DRIVE, SUITE 125  
DENVER, COLORADO 80231  
ATTN: KARL STOUT

# PARKER AND PINE CONDOMINIUM PLAT BUILDINGS 1 & 2

A PART OF LOT 1, PARKER AND PINE FILING 2 •  
SITUATED IN THE SE 1/4 OF SECTION 9 AND THE SW 1/4 OF SECTION 10, T.6S., R.66W. OF THE 6TH P.M.  
TOWN OF PARKER, COUNTY OF DOUGLAS, STATE OF COLORADO  
**9540 TWENTY MILE ROAD**



**BUILDING 1 - LEVEL 3 FLOORPLAN**  
SCALE: 1/8" = 1'-0"



**LEGEND**

G.C.E.	GENERAL COMMON ELEMENT
L.C.E.	LIMITED COMMON ELEMENT

**GENERAL NOTES:**

ALL LINENWORK DEPICTING INTERIOR IMPROVEMENTS THAT ARE WITHIN AND PART OF A UNIT SHOWN HEREON ARE PER THE ARCHITECTURAL DESIGN PROVIDED BY SEBREE ARCHITECTS, INC. AND MAY NOT REPRESENT THE ACTUAL LOCATIONS OF SUCH INTERIOR IMPROVEMENTS.



**BUILDING 1 - LEVEL 3 FLOORPLAN**

PARKER AND PINE CONDOMINIUM PLAT - BUILDINGS 1 & 2  
A PART OF LOT 1, PARKER AND PINE FILING 2  
SITUATED IN THE SE 1/4 OF SECTION 9 AND THE SW 1/4 OF SECTION 10, T.6S., R.66W. OF THE 6TH P.M.  
TOWN OF PARKER, COUNTY OF DOUGLAS, STATE OF COLORADO  
**9540 TWENTY MILE ROAD**

14190 East Evans Avenue  
Aurora, Colorado 80014  
engineering@esc.com  
P 303.337.1383  
F 303.337.7481  
T/F 1.877.273.0659

No. 1

Description: INITIAL CONDO MAP SUBMITTAL

Date: 6/28/2024

Client:

**THE GARRETT COMPANIES**  
10375 PARK MEADOWS DRIVE, SUITE 125  
LONG TREE, COLORADO 80124  
ATTN: KARL STOUT

ESC Team: CNB, JDP  
Survey No.: 23-025-CM  
Scale: 1/8" = 1'-0"  
Sheet No.: **CM-5**

# PARKER AND PINE CONDOMINIUM PLAT BUILDINGS 1 & 2

A PART OF LOT 1, PARKER AND PINE FILING 2  
SITUATED IN THE SE 1/4 OF SECTION 9 AND THE SW 1/4 OF SECTION 10, T.6S., R.66W. OF THE 6TH P.M.  
TOWN OF PARKER, COUNTY OF DOUGLAS, STATE OF COLORADO

9540 TWENTY MILE ROAD



**1 BUILDING 2 - LEVEL 1 FLOORPLAN**  
SCALE: 1/8" = 1'-0"



**LEGEND**

G.C.E.	GENERAL COMMON ELEMENT
L.C.E.	LIMITED COMMON ELEMENT

**GENERAL NOTES:**

ALL LINENWORK DEPICTING INTERIOR IMPROVEMENTS THAT ARE WITHIN AND PART OF A UNIT SHOWN HEREON ARE PER THE ARCHITECTURAL DESIGN PROVIDED BY SEBRE ARCHITECTS, INC. AND MAY NOT REPRESENT THE ACTUAL LOCATIONS OF SUCH INTERIOR IMPROVEMENTS.



**BUILDING 2 - LEVEL 1 FLOORPLAN**  
PARKER AND PINE CONDOMINIUM PLAT - BUILDINGS 1 & 2  
A PART OF LOT 1, PARKER AND PINE FILING 2  
SITUATED IN THE SE 1/4 OF SECTION 9 AND THE SW 1/4 OF SECTION 10, T.6S., R.66W. OF THE 6TH P.M.  
TOWN OF PARKER, COUNTY OF DOUGLAS, STATE OF COLORADO  
9540 TWENTY MILE ROAD

**ESC ENGINEERING SERVICE COMPANY**  
Creative Solutions Since 1954  
CIVIL ENGINEERS | LAND SURVEYORS

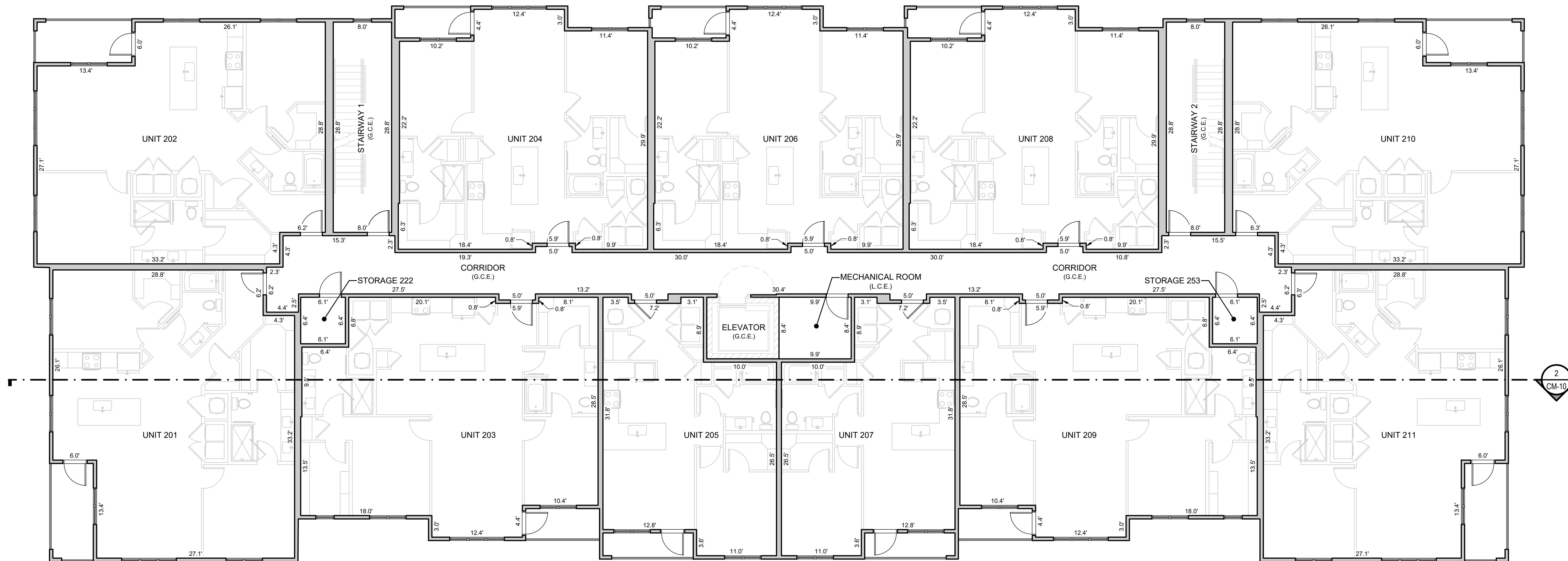
14190 East Evans Avenue  
Aurora, Colorado 80014  
engineering@esc-co.com  
P 303.337.1393  
F 303.337.7481  
T/F 1.877.273.0659

**THE GARRETT COMPANIES**  
10375 PARK MEADOWS DRIVE, SUITE 125  
LONG TREE, COLORADO 80124  
TEL: 303.441.2623  
ATTN: KARL STOUT

No.:	1	Description:	INITIAL CONDO MAP SUBMITTAL
Date:	6/28/2024		

# PARKER AND PINE CONDOMINIUM PLAT BUILDINGS 1 & 2

A PART OF LOT 1, PARKER AND PINE FILING 2 •  
SITUATED IN THE SE 1/4 OF SECTION 9 AND THE SW 1/4 OF SECTION 10, T.6S., R.66W. OF THE 6TH P.M.  
TOWN OF PARKER, COUNTY OF DOUGLAS, STATE OF COLORADO  
**9540 TWENTY MILE ROAD**



**BUILDING 2 - LEVEL 2 FLOORPLAN**  
SCALE: 1/8" = 1'-0"



**LEGEND**

G.C.E.	GENERAL COMMON ELEMENT
L.C.E.	LIMITED COMMON ELEMENT

**GENERAL NOTES:**

ALL LINEWORK DEPICTING INTERIOR IMPROVEMENTS THAT ARE WITHIN AND PART OF A UNIT SHOWN HEREON ARE PER THE ARCHITECTURAL DESIGN PROVIDED BY SEBREE ARCHITECTS, INC. AND MAY NOT REPRESENT THE ACTUAL LOCATIONS OF SUCH INTERIOR IMPROVEMENTS.



**BUILDING 2 - LEVEL 2 FLOORPLAN**  
PARKER AND PINE CONDOMINIUM PLAT - BUILDINGS 1 & 2  
A PART OF LOT 1, PARKER AND PINE FILING 2  
SITUATED IN THE SE 1/4 OF SECTION 9 AND THE SW 1/4 OF SECTION 10, T.6S., R.66W. OF THE 6TH P.M.  
TOWN OF PARKER, COUNTY OF DOUGLAS, STATE OF COLORADO  
**9540 TWENTY MILE ROAD**

ES&C Team: CNB, JDP  
Date: 8/28/2024  
Survey No.: 23-025-CM  
Scale: 1/8" = 1'-0"  
Sheet No.: **CM-7**



14190 East Evans Avenue  
Aurora, Colorado 80014  
engineering@esandc.com  
P 303.337.1383  
F 303.337.7481  
T/F 1.877.273.0659

No.: 1

Description: INITIAL CONDO MAP SUBMITTAL

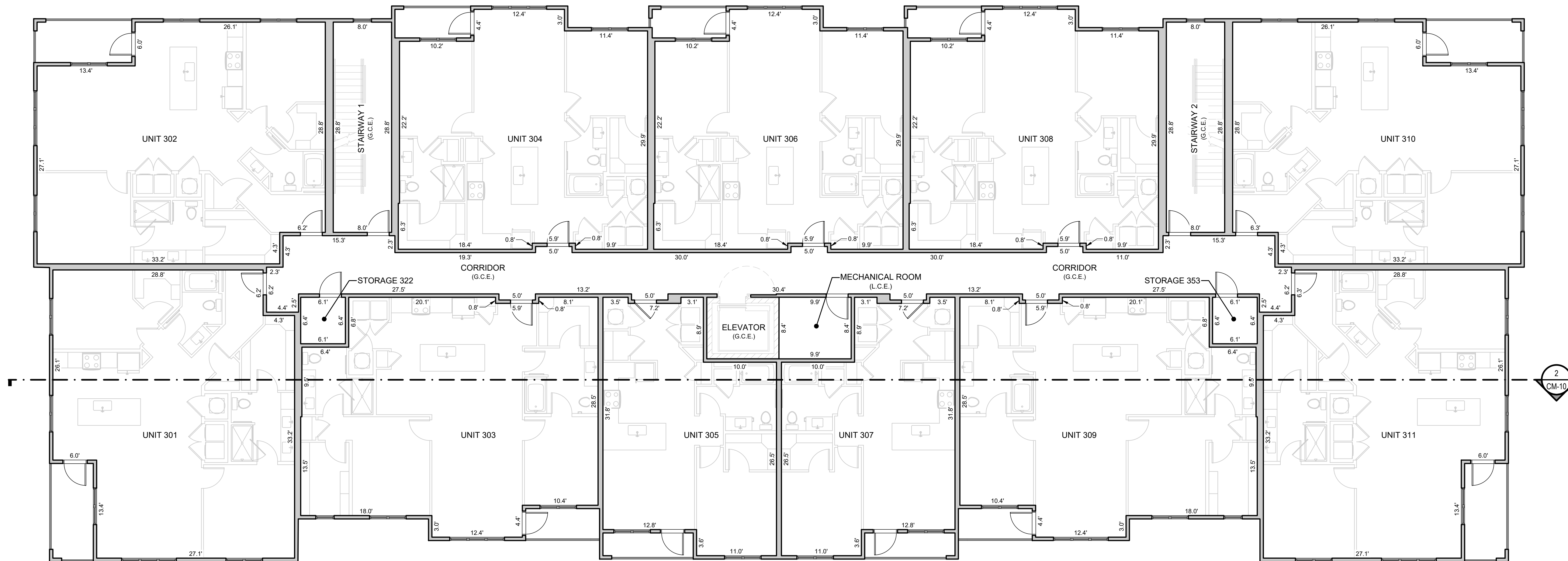
Date: 8/28/2024

Client:

**THE GARRETT COMPANIES**  
10375 PARK MEADOWS DRIVE, SUITE 125  
LONG TREE, COLORADO 80124  
ATTN: KARL STOUT

# PARKER AND PINE CONDOMINIUM PLAT BUILDINGS 1 & 2

A PART OF LOT 1, PARKER AND PINE FILING 2 •  
SITUATED IN THE SE 1/4 OF SECTION 9 AND THE SW 1/4 OF SECTION 10, T.6S., R.66W. OF THE 6TH P.M.  
TOWN OF PARKER, COUNTY OF DOUGLAS, STATE OF COLORADO  
9540 TWENTY MILE ROAD



**BUILDING 2 - LEVEL 3 FLOORPLAN**  
SCALE: 1/8" = 1'-0"



### LEGEND

G.C.E.	GENERAL COMMON ELEMENT
L.C.E.	LIMITED COMMON ELEMENT

### GENERAL NOTES:

ALL LINENWORK DEPICTING INTERIOR IMPROVEMENTS THAT ARE WITHIN AND PART OF A UNIT SHOWN HEREON ARE PER THE ARCHITECTURAL DESIGN PROVIDED BY SEBREE ARCHITECTS, INC. AND MAY NOT REPRESENT THE ACTUAL LOCATIONS OF SUCH INTERIOR IMPROVEMENTS.



**BUILDING 2 - LEVEL 3 FLOORPLAN**  
PARKER AND PINE CONDOMINIUM PLAT - BUILDINGS 1 & 2  
A PART OF LOT 1, PARKER AND PINE FILING 2  
SITUATED IN THE SE 1/4 OF SECTION 9 AND THE SW 1/4 OF SECTION 10, T.6S., R.66W. OF THE 6TH P.M.  
TOWN OF PARKER, COUNTY OF DOUGLAS, STATE OF COLORADO  
9540 TWENTY MILE ROAD

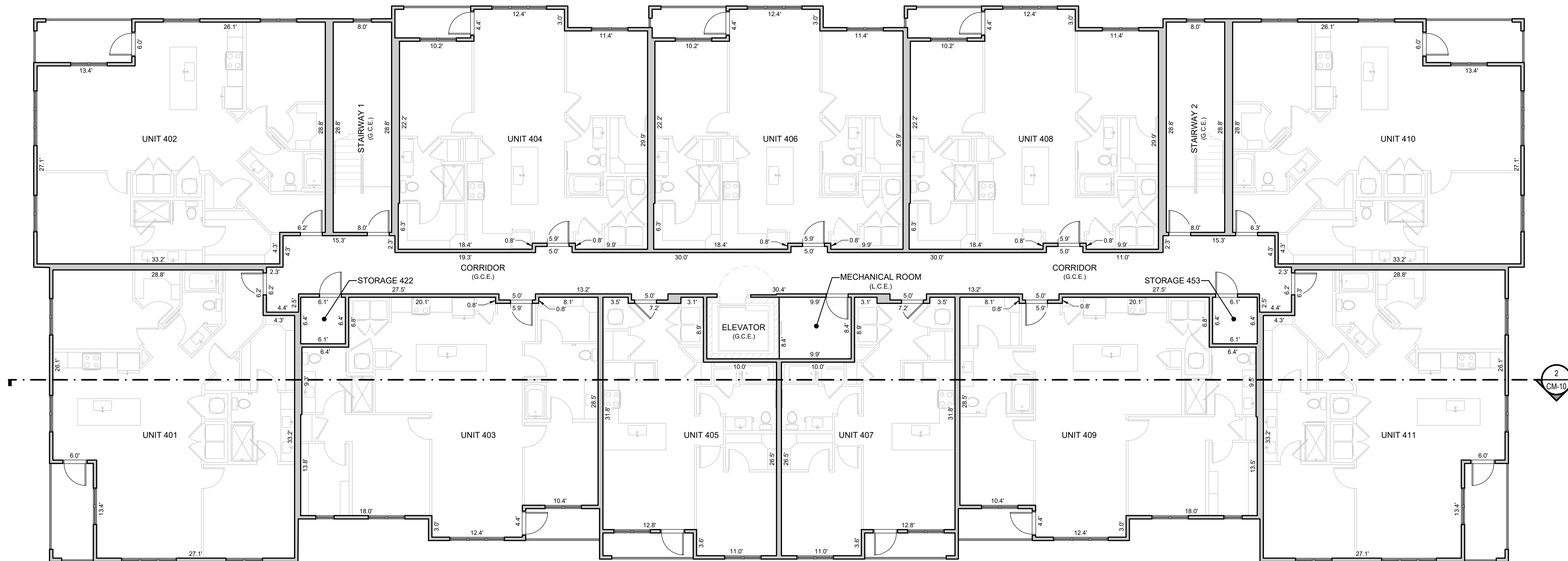
**ESC ENGINEERING SERVICE COMPANY**  
Creative Solutions Since 1954  
CIVIL ENGINEERS | LAND SURVEYORS

14190 East Evans Avenue  
Aurora, Colorado 80014  
engineering@esc.com  
P 303.337.1383  
F 303.337.7481  
T/F 1.877.273.0659

No.	Description	Date	Client
1	INITIAL CONDO MAP SUBMITTAL	6/28/2024	THE GARRETT COMPANIES 10375 PARK MEADOWS DRIVE, SUITE 125 LONG TREE, COLORADO 80124 ATTN: KARL STOUT

# PARKER AND PINE CONDOMINIUM PLAT BUILDINGS 1 & 2

A PART OF LOT 1, PARKER AND PINE FILING 2 •  
SITUATED IN THE SE 1/4 OF SECTION 9 AND THE SW 1/4 OF SECTION 10, T.6S., R.66W. OF THE 6TH P.M.  
TOWN OF PARKER, COUNTY OF DOUGLAS, STATE OF COLORADO  
**9540 TWENTY MILE ROAD**



**BUILDING 2 - LEVEL 4 FLOORPLAN**  
SCALE: 1/8" = 1'-0"



**LEGEND**

G.C.E.	GENERAL COMMON ELEMENT
L.C.E.	LIMITED COMMON ELEMENT

**GENERAL NOTES:**

ALL LINEWORK DEPICTING INTERIOR IMPROVEMENTS THAT ARE WITHIN AND PART OF A UNIT SHOWN HEREON ARE PER THE ARCHITECTURAL DESIGN PROVIDED BY SEBREE ARCHITECTS, INC. AND MAY NOT REPRESENT THE ACTUAL LOCATIONS OF SUCH INTERIOR IMPROVEMENTS.



**BUILDING 2 - LEVEL 4 FLOORPLAN**  
PARKER AND PINE CONDOMINIUM PLAT - BUILDINGS 1 & 2  
A PART OF LOT 1, PARKER AND PINE FILING 2  
SITUATED IN THE SE 1/4 OF SECTION 9 AND THE SW 1/4 OF SECTION 10, T.6S., R.66W. OF THE 6TH P.M.  
TOWN OF PARKER, COUNTY OF DOUGLAS, STATE OF COLORADO  
**9540 TWENTY MILE ROAD**

**ESC ENGINEERING SERVICE COMPANY**  
Creative Solutions Since 1954  
CIVIL ENGINEERS | LAND SURVEYORS

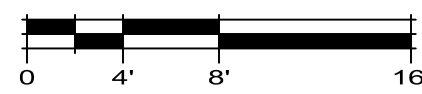
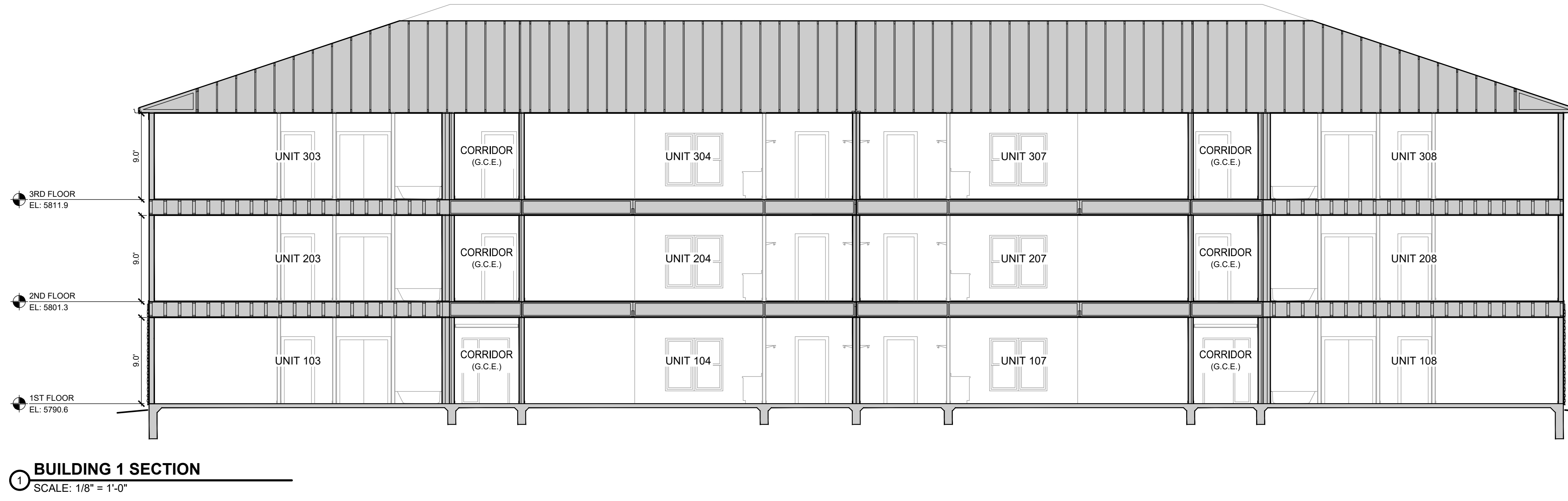
14190 East Evans Avenue  
Aurora, Colorado 80014  
engineering@esc.com  
P 303.337.1383  
F 303.337.7481  
T/F 1.877.273.0659

No.:	1	Description:	INITIAL CONDO MAP SUBMITTAL
Date:	6/28/2024		

**THE GARRETT COMPANIES**  
10375 PARK MEADOWS DRIVE, SUITE 125  
LONG TREE, COLORADO 80124  
ATTN: KARL STOUT

# PARKER AND PINE CONDOMINIUM PLAT BUILDINGS 1 & 2

A PART OF LOT 1, PARKER AND PINE FILING 2  
SITUATED IN THE SE 1/4 OF SECTION 9 AND THE SW 1/4 OF SECTION 10, T.6S., R.66W. OF THE 6TH P.M.  
TOWN OF PARKER, COUNTY OF DOUGLAS, STATE OF COLORADO  
**9540 TWENTY MILE ROAD**



**LEGEND**

G.C.E.	GENERAL COMMON ELEMENT
L.C.E.	LIMITED COMMON ELEMENT

**GENERAL NOTES:**  
ALL LINENWORK DEPICTING INTERIOR IMPROVEMENTS THAT ARE WITHIN AND PART OF A UNIT SHOWN HEREON ARE PER THE ARCHITECTURAL DESIGN PROVIDED BY SEBRE ARCHITECTS, INC. AND MAY NOT REPRESENT THE ACTUAL LOCATIONS OF SUCH INTERIOR IMPROVEMENTS.



<p><b>ES&amp;C ENGINEERING SERVICE COMPANY</b> Creative Solutions Since 1954 CIVIL ENGINEERS   LAND SURVEYORS</p> <p>14190 East Evans Avenue Aurora, Colorado 80014 engineering@esec.com P 303.337.1383 F 303.337.7481 T/F 1.877.273.0659</p>	<p><b>70th Anniversary</b></p>	<p><b>BUILDING SECTIONS</b> PARKER AND PINE CONDOMINIUM PLAT - BUILDINGS 1 &amp; 2 A PART OF LOT 1, PARKER AND PINE FILING 2 SITUATED IN THE SE 1/4 OF SECTION 9 AND THE SW 1/4 OF SECTION 10, T.6S., R.66W. OF THE 6TH P.M. TOWN OF PARKER, COUNTY OF DOUGLAS, STATE OF COLORADO <b>9540 TWENTY MILE ROAD</b></p>	<p>Client: THE GARRETT COMPANIES 10375 PARK MEADOWS DRIVE, SUITE 125 LONG TREE, COLORADO 80124 DATE: 8/28/2024</p> <p>Date: 8/28/2024</p> <p>Description: INITIAL CONDO MAP SUBMITTAL</p> <p>No.: 1</p> <p>ES&amp;C Team: CNB, JDP Survey No.: 23-025-CM Scale: 1/8" = 1'-0"</p> <p>Sheet No.: <b>CM-10</b></p>
---	--------------------------------	--	---