

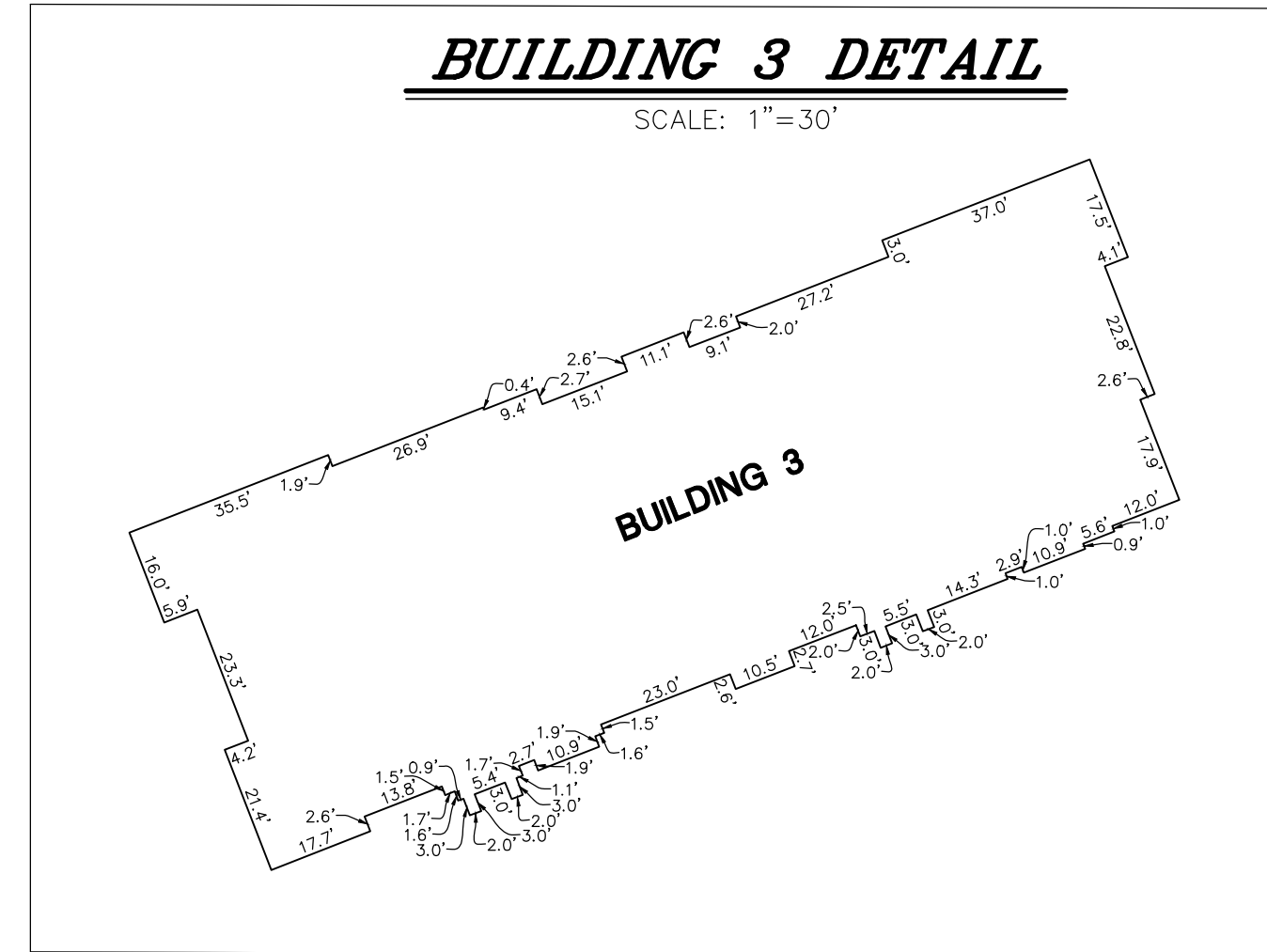
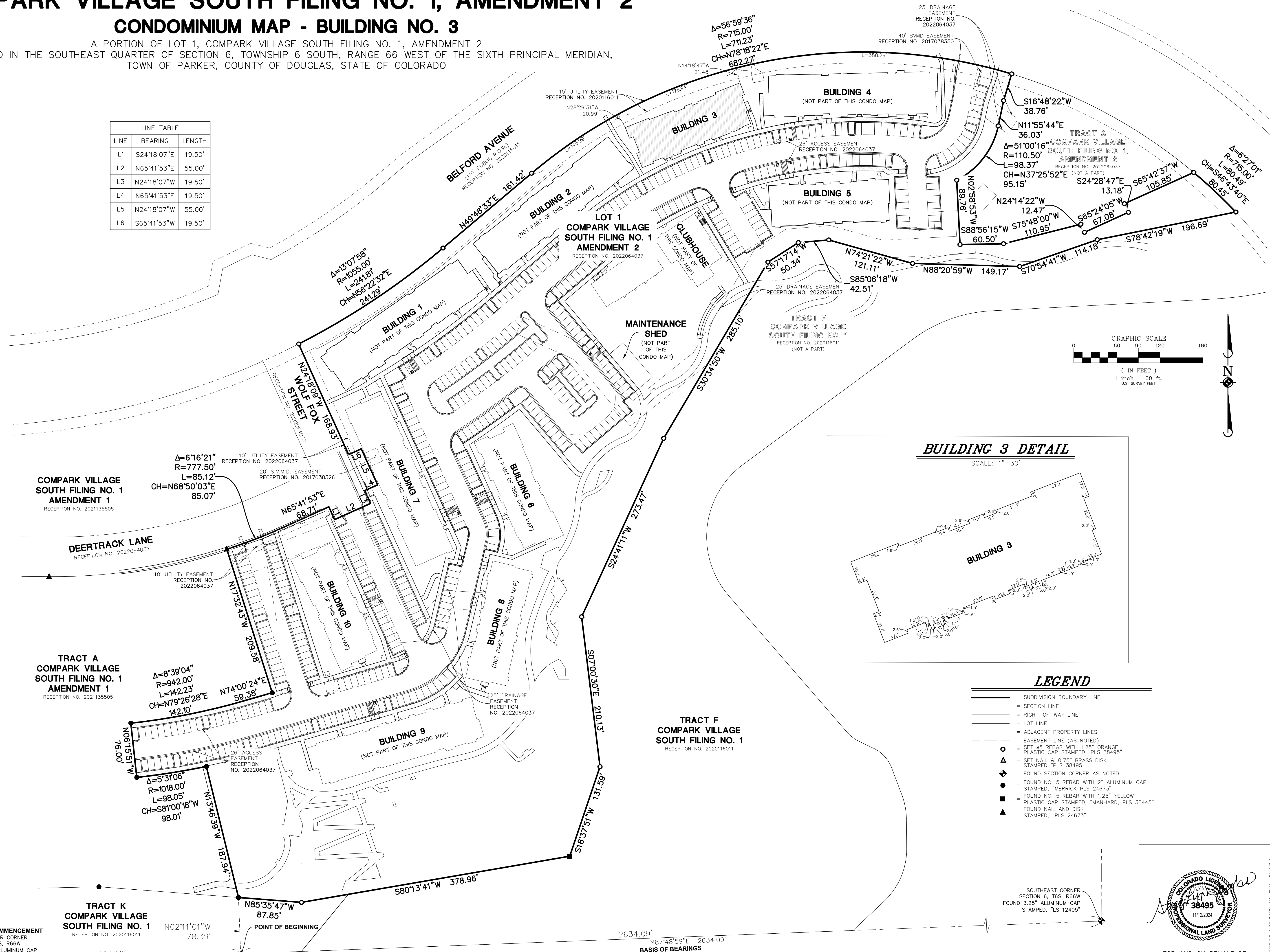


# COMPARK VILLAGE SOUTH FILING NO. 1, AMENDMENT 2

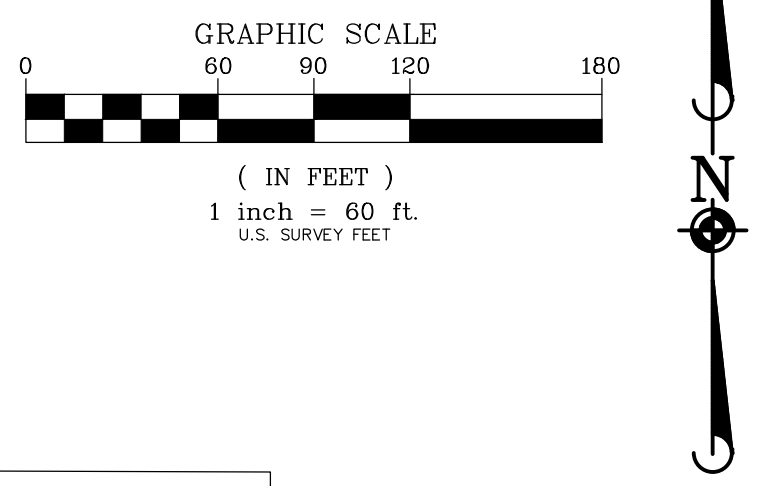
## CONDOMINIUM MAP - BUILDING NO. 3

A PORTION OF LOT 1, COMPARK VILLAGE SOUTH FILING NO. 1, AMENDMENT 2  
 LOCATED IN THE SOUTHEAST QUARTER OF SECTION 6, TOWNSHIP 6 SOUTH, RANGE 66 WEST OF THE SIXTH PRINCIPAL MERIDIAN,  
 TOWN OF PARKER, COUNTY OF DOUGLAS, STATE OF COLORADO

LINE	BEARING	LENGTH
L1	S24°18'07"E	19.50'
L2	N65°41'53"E	55.00'
L3	N24°18'07"W	19.50'
L4	N65°41'53"E	19.50'
L5	N24°18'07"W	55.00'
L6	S65°41'53"W	19.50'



- LEGEND**
- SUBDIVISION BOUNDARY LINE
  - - - SECTION LINE
  - - - RIGHT-OF-WAY LINE
  - LOT LINE
  - - - ADJACENT PROPERTY LINES
  - - - EASEMENT LINE (AS NOTED)
  - SET #5 REBAR WITH 1.25" ORANGE PLASTIC CAP STAMPED "PLS 38495"
  - △ SET NAIL & 0.75" BRASS DISK STAMPED "PLS 38445"
  - ◆ FOUND SECTION CORNER AS NOTED
  - FOUND NO. 5 REBAR WITH 2" ALUMINUM CAP STAMPED, "MERRICK PLS 24673"
  - FOUND NO. 5 REBAR WITH 1.25" YELLOW PLASTIC CAP STAMPED, "MANHARD, PLS 38445"
  - ▲ FOUND NAIL AND DISK STAMPED, "PLS 24673"



COMPARK VILLAGE SOUTH FILING NO. 1 AMENDMENT 1  
 RECEPTION NO. 2021135505

TRACT A COMPARK VILLAGE SOUTH FILING NO. 1 AMENDMENT 1  
 RECEPTION NO. 2021135505

TRACT K COMPARK VILLAGE SOUTH FILING NO. 1  
 RECEPTION NO. 2020116011

TRACT F COMPARK VILLAGE SOUTH FILING NO. 1  
 RECEPTION NO. 2020116011

BELFORD AVENUE  
 (110' PUBLIC R.O.W.)  
 RECEPTION NO. 2020116011

DEERTRACK LANE  
 RECEPTION NO. 2022064037

WOLF FOX STREET  
 RECEPTION NO. 202064037

POINT OF COMMENCEMENT  
 SOUTH QUARTER CORNER  
 SECTION 6, T6S, R66W  
 FOUND 3.25" ALUMINUM CAP  
 STAMPED, "PLS 38026"

POINT OF BEGINNING

SOUTHEAST CORNER  
 SECTION 6, T6S, R66W  
 FOUND 3.25" ALUMINUM CAP  
 STAMPED, "PLS 12405"



FOR AND ON BEHALF OF  
 MANHARD CONSULTING

**Manhard CONSULTING**  
 7600 East Orchard Road, Suite 1600W, Greenwood Village, CO 80111, phone: 303.792.0600, manhard.com  
 Civil Engineering | Surveying & Geospatial Services | GIS | Water Resource Management | Construction Management

COMPARK VILLAGE SOUTH FILING NO. 1, AMENDMENT 2  
 TOWN OF PARKER, COUNTY OF DOUGLAS, STATE OF COLORADO  
 BUILDING NO. 3 - CONDOMINIUM MAP

PROJ. MGR.: SLJ  
 PROJ. ASSOC.: MKW  
 DRAWN BY: MKW  
 DATE: 08/19/24  
 SCALE: 1"=60'

SHEET  
**2 OF 5**  
 CEC.PKC005

November 4, 2024 - 13:40 - Data Name: P:\Compark\05\Drawn\Compark\Final\Drawings\Condominium\Plan\CECPKC005-Bldg3.dwg, Updated By: cdlaw





