

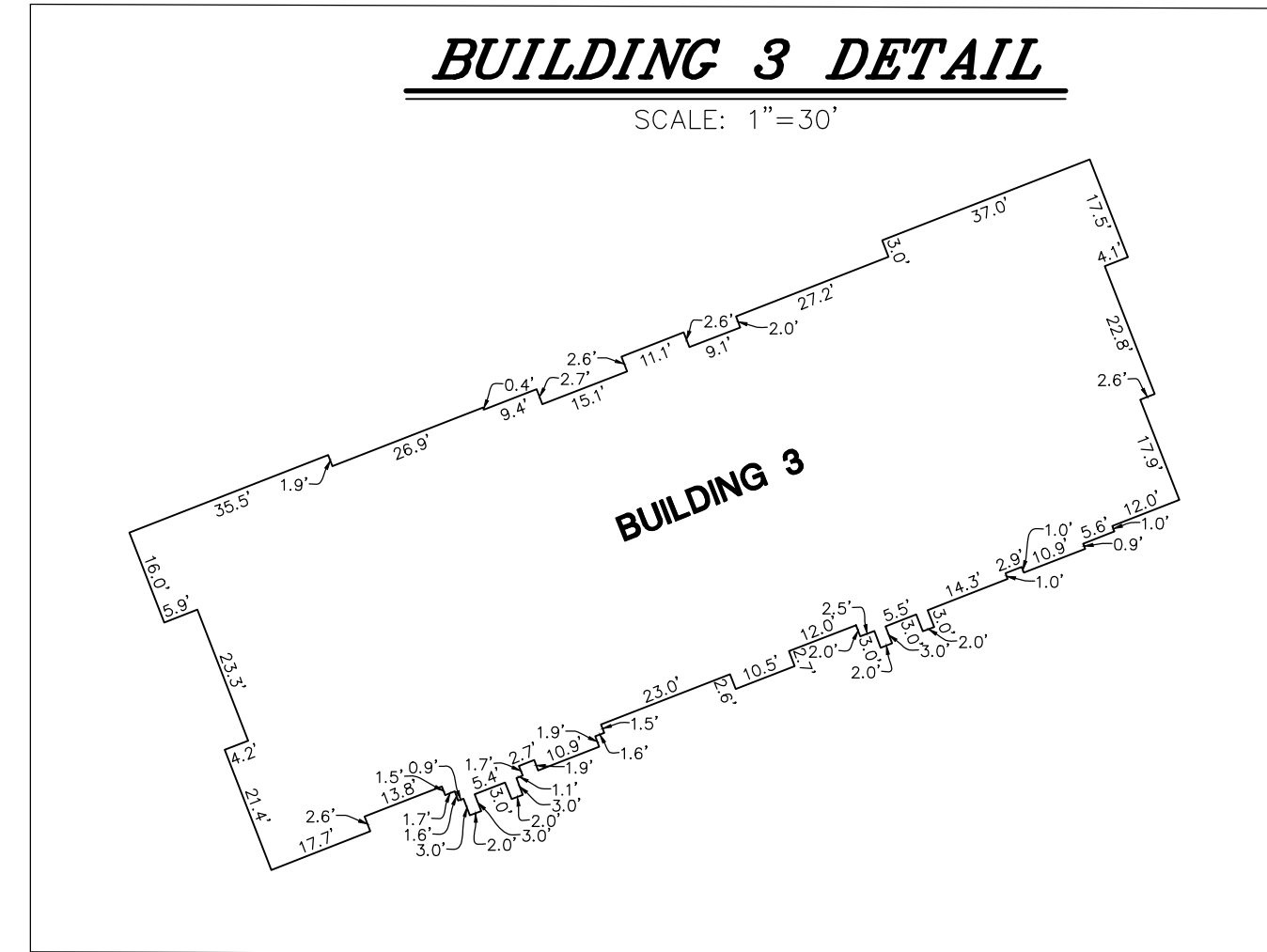
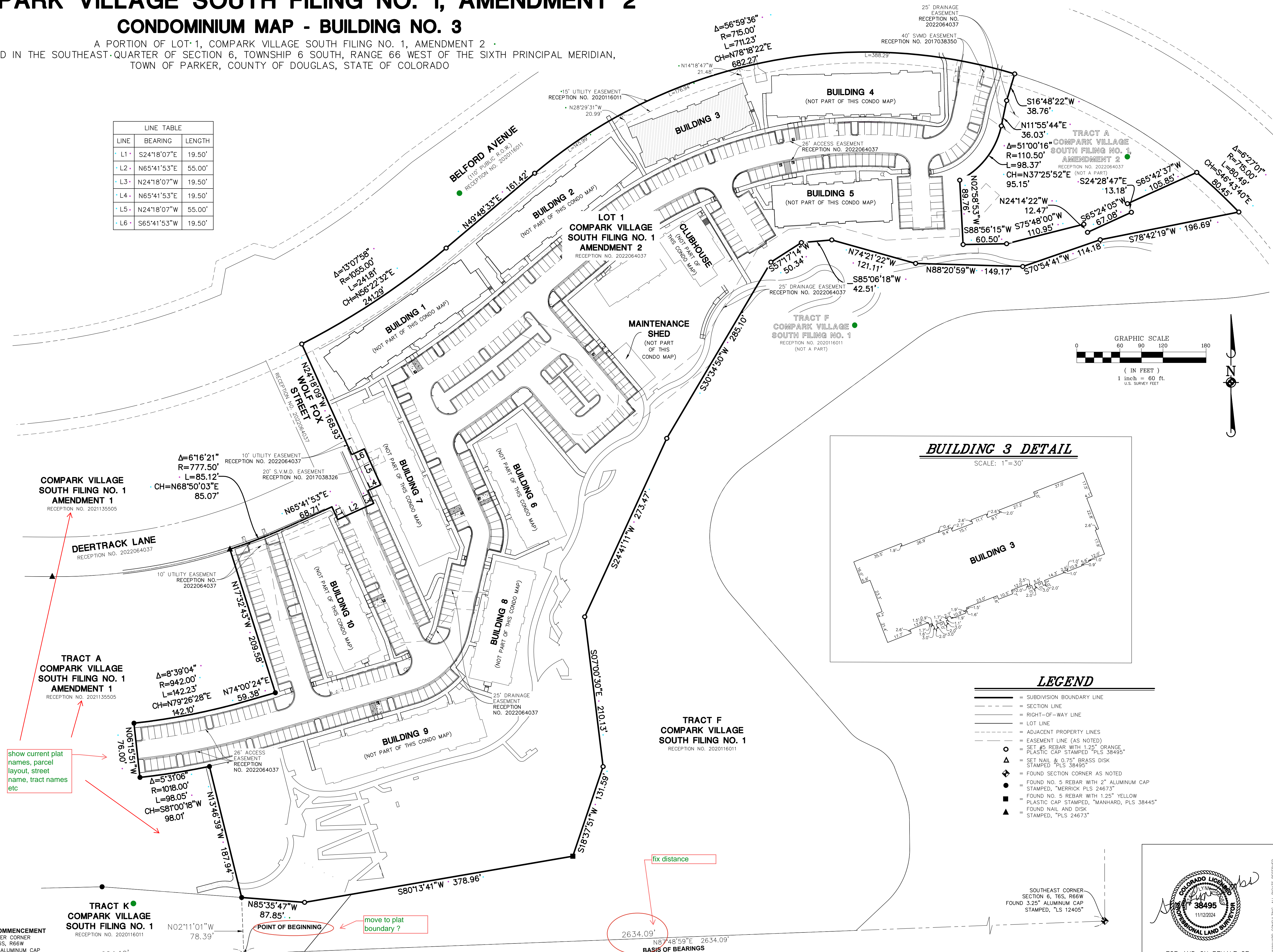


# COMPARK VILLAGE SOUTH FILING NO. 1, AMENDMENT 2

## CONDOMINIUM MAP - BUILDING NO. 3

A PORTION OF LOT 1, COMPARK VILLAGE SOUTH FILING NO. 1, AMENDMENT 2  
 LOCATED IN THE SOUTHEAST-QUARTER OF SECTION 6, TOWNSHIP 6 SOUTH, RANGE 66 WEST OF THE SIXTH PRINCIPAL MERIDIAN,  
 TOWN OF PARKER, COUNTY OF DOUGLAS, STATE OF COLORADO

LINE	BEARING	LENGTH
L1	S24°18'07"E	19.50'
L2	N65°41'53"E	55.00'
L3	N24°18'07"W	19.50'
L4	N65°41'53"E	19.50'
L5	N24°18'07"W	55.00'
L6	S65°41'53"W	19.50'

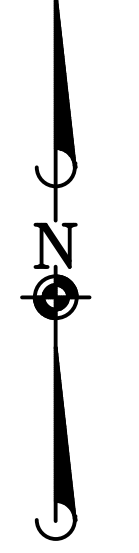
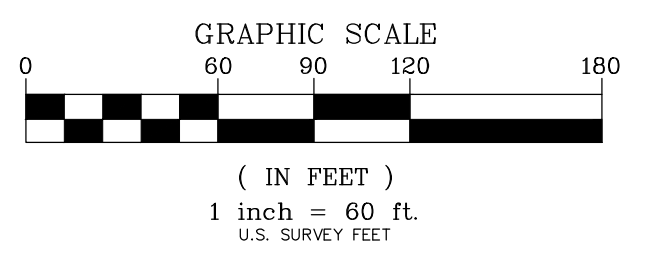


- LEGEND**
- SUBDIVISION BOUNDARY LINE
  - - - SECTION LINE
  - - - RIGHT-OF-WAY LINE
  - - - LOT LINE
  - - - ADJACENT PROPERTY LINES
  - - - EASEMENT LINE (AS NOTED)
  - SET #5 REBAR WITH 1.25" ORANGE PLASTIC CAP STAMPED "PLS 38495"
  - △ SET NAIL & 0.75" BRASS DISK STAMPED "PLS 38445"
  - ◆ FOUND SECTION CORNER AS NOTED
  - FOUND NO. 5 REBAR WITH 2" ALUMINUM CAP STAMPED, "MERRICK PLS 24673"
  - FOUND NO. 5 REBAR WITH 1.25" YELLOW PLASTIC CAP STAMPED, "MANHARD, PLS 38445"
  - ▲ FOUND NAIL AND DISK STAMPED, "PLS 24673"

SOUTHEAST CORNER  
 SECTION 6, T6S, R66W  
 FOUND 3.25" ALUMINUM CAP  
 STAMPED, "PLS 12405"



FOR AND ON BEHALF OF  
 MANHARD CONSULTING



**Manhard CONSULTING**  
 7600 East Orchard Road, Suite 100, Greenwood Village, CO 80111, phone: 303.733.0600, manhard.com  
 Civil Engineering | Surveying & Geospatial Services | GIS | Water Resource Management | Construction Management

**COMPARK VILLAGE SOUTH FILING NO. 1, AMENDMENT 2**  
 TOWN OF PARKER, COUNTY OF DOUGLAS, STATE OF COLORADO  
**BUILDING NO. 3 - CONDOMINIUM MAP**

PROJ. MGR.: SLJ  
 PROJ. ASSOC.: MKW  
 DRAWN BY: MKW  
 DATE: 08/19/24  
 SCALE: 1"=60'

SHEET  
**2 OF 5**  
 CEC.PKC005

November 4, 2024 - 13:40 - Data Name: P:\Cadd\2024\13440\ComparkVillage\Condominium\Plan\CEPC005-Bldg3.dwg, Updated By: cdlaw





