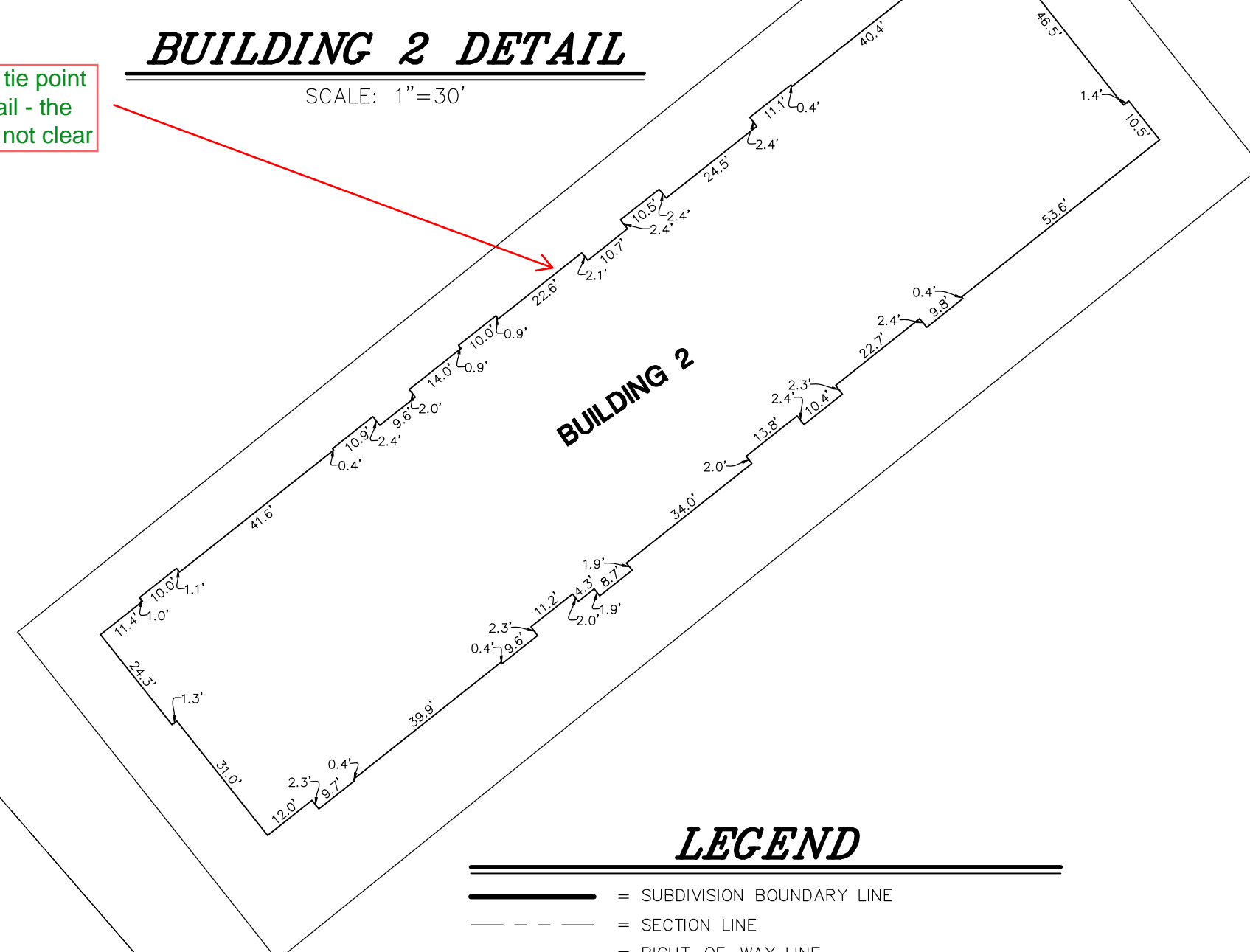
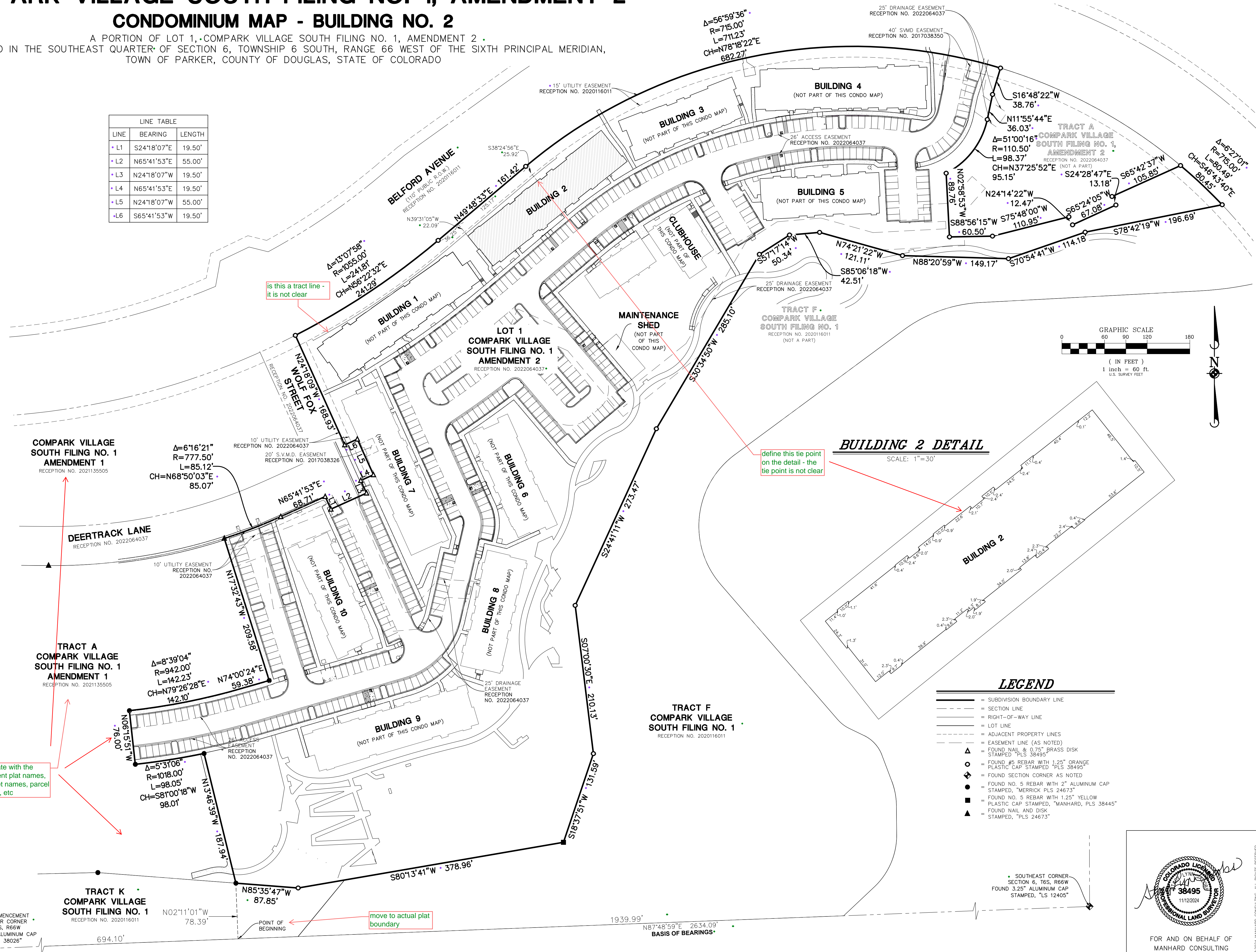


COMPARK VILLAGE SOUTH FILING NO. 1, AMENDMENT 2

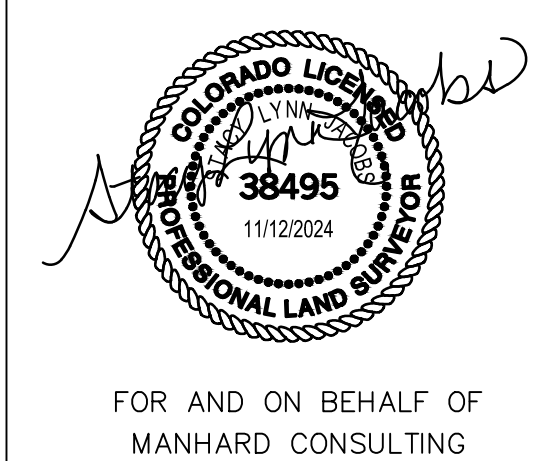
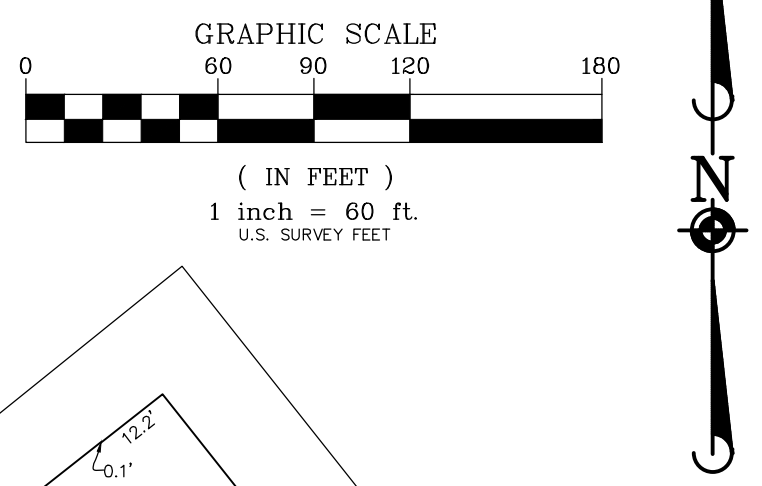
CONDOMINIUM MAP - BUILDING NO. 2

A PORTION OF LOT 1, COMPARK VILLAGE SOUTH FILING NO. 1, AMENDMENT 2.
 LOCATED IN THE SOUTHEAST QUARTER OF SECTION 6, TOWNSHIP 6 SOUTH, RANGE 66 WEST OF THE SIXTH PRINCIPAL MERIDIAN,
 TOWN OF PARKER, COUNTY OF DOUGLAS, STATE OF COLORADO

LINE	BEARING	LENGTH
L1	S24°18'07"E	19.50'
L2	N65°41'53"E	55.00'
L3	N24°18'07"W	19.50'
L4	N65°41'53"E	19.50'
L5	N24°18'07"W	55.00'
L6	S65°41'53"W	19.50'



- LEGEND**
- = SUBDIVISION BOUNDARY LINE
 - - - = SECTION LINE
 - - - = RIGHT-OF-WAY LINE
 - - - = LOT LINE
 - - - = ADJACENT PROPERTY LINES
 - - - = EASEMENT LINE (AS NOTED)
 - △ = FOUND NAIL & 0.75" BRASS DISK STAMPED "PLS 38495"
 - = FOUND #5 REBAR WITH 1.25" ORANGE PLASTIC CAP STAMPED "PLS 38495"
 - ◆ = FOUND SECTION CORNER AS NOTED
 - = FOUND NO. 5 REBAR WITH 2" ALUMINUM CAP STAMPED, "MERRICK PLS 24673"
 - = FOUND NO. 5 REBAR WITH 1.25" YELLOW PLASTIC CAP STAMPED, "MANHARD, PLS 38445"
 - ▲ = FOUND NAIL AND DISK STAMPED, "PLS 24673"



Manhard CONSULTING
 7600 East Orchard Road, Suite 100, Greenwood Village, CO 80111, phone: 303.750.0600, manhard.com
 Civil Engineering | Surveying & Geospatial Services | GIS | Water Resource Management | Construction Management

COMPARK VILLAGE SOUTH FILING NO. 1, AMENDMENT 2
 TOWN OF PARKER, COUNTY OF DOUGLAS, STATE OF COLORADO
 BUILDING NO. 2 - CONDOMINIUM MAP

PROJ. MGR.: SLJ
 PROJ. ASSOC.: MKW
 DRAWN BY: MKW
 DATE: 10/4/24
 SCALE: 1"=60'

SHEET
2 OF **5**
 CEC.PKC005

November 13, 2024 - 11:18 C:\Users\manh\OneDrive\Documents\Projects-DNA\Projects-DNA\Projects-DNA\Drawings\Condominium_Plot\VEPC005-8492.dwg Updated Bk editor

