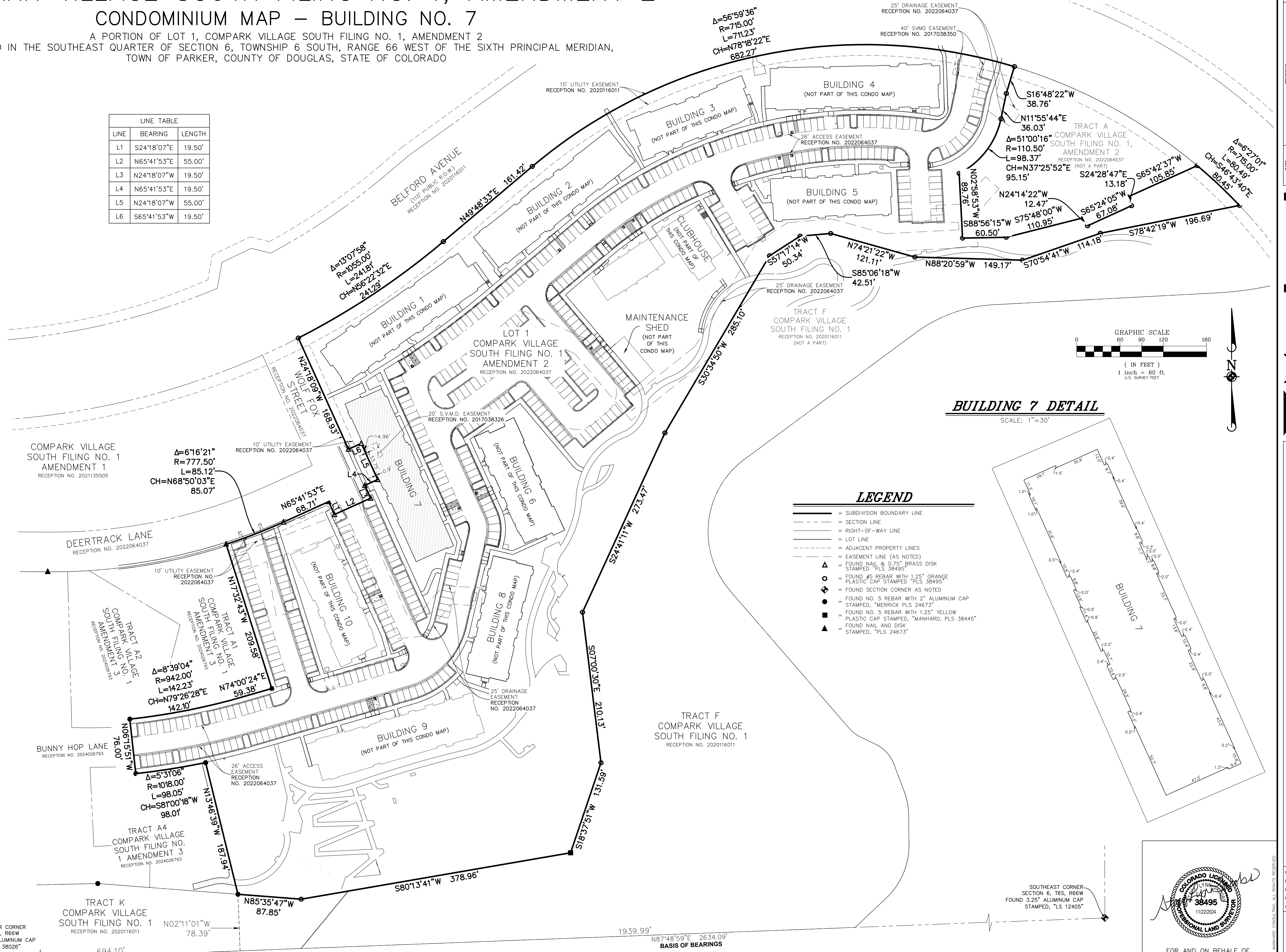


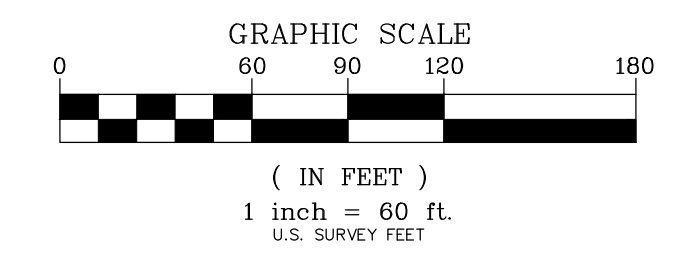
COMPARK VILLAGE SOUTH FILING NO. 1, AMENDMENT 2 CONDOMINIUM MAP – BUILDING NO. 7

A PORTION OF LOT 1, COMPARK VILLAGE SOUTH FILING NO. 1, AMENDMENT 2
LOCATED IN THE SOUTHEAST QUARTER OF SECTION 6, TOWNSHIP 6 SOUTH, RANGE 66 WEST OF THE SIXTH PRINCIPAL MERIDIAN,
TOWN OF PARKER, COUNTY OF DOUGLAS, STATE OF COLORADO

LINE TABLE		
LINE	BEARING	LENGTH
L1	S24°18'07"E	19.50'
L2	N65°41'53"E	55.00'
L3	N24°18'07"W	19.50'
L4	N65°41'53"E	19.50'
L5	N24°18'07"W	55.00'
L6	S65°41'53"W	19.50'



BUILDING 7 DETAIL
SCALE: 1"=30'



FOR AND ON BEHALF OF
MANHARD CONSULTING

Manhard CONSULTING
7600 East Orchard Road, Suite 100, Greenwood Village, CO 80111, phone: 303.750.0600, manhard.com
Civil Engineering | Surveying & Geospatial Services | GIS | Water Resource Management | Construction Management

COMPARK VILLAGE SOUTH FILING NO. 1, AMENDMENT 2
TOWN OF PARKER, COUNTY OF DOUGLAS, STATE OF COLORADO
BUILDING NO. 7 - CONDOMINIUM MAP

PROJ. MGR.: SLJ
PROJ. ASSOC.: MKW
DRAWN BY: MKW
DATE: 11/22/24
SCALE: 1"=60'

SHEET
2 OF 5
CEC.PKC005

February 19, 2025 - 15:39 Doc Name: \\mcl-dsv-nas\Projects-DNV\Colorado\5\Drawings\Condominium_Plan\CECPC005-Bldg7.dwg Updated By: cdllow

