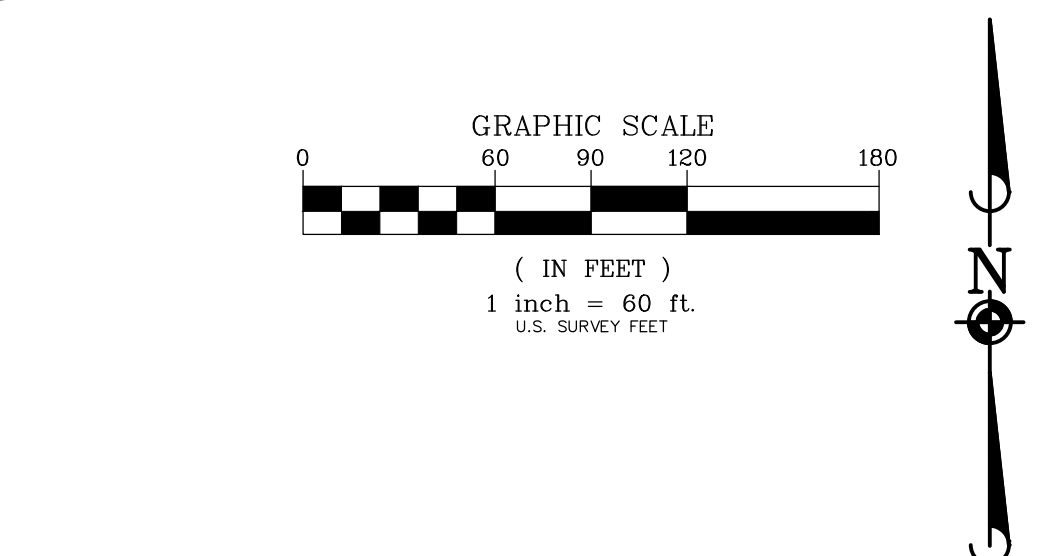
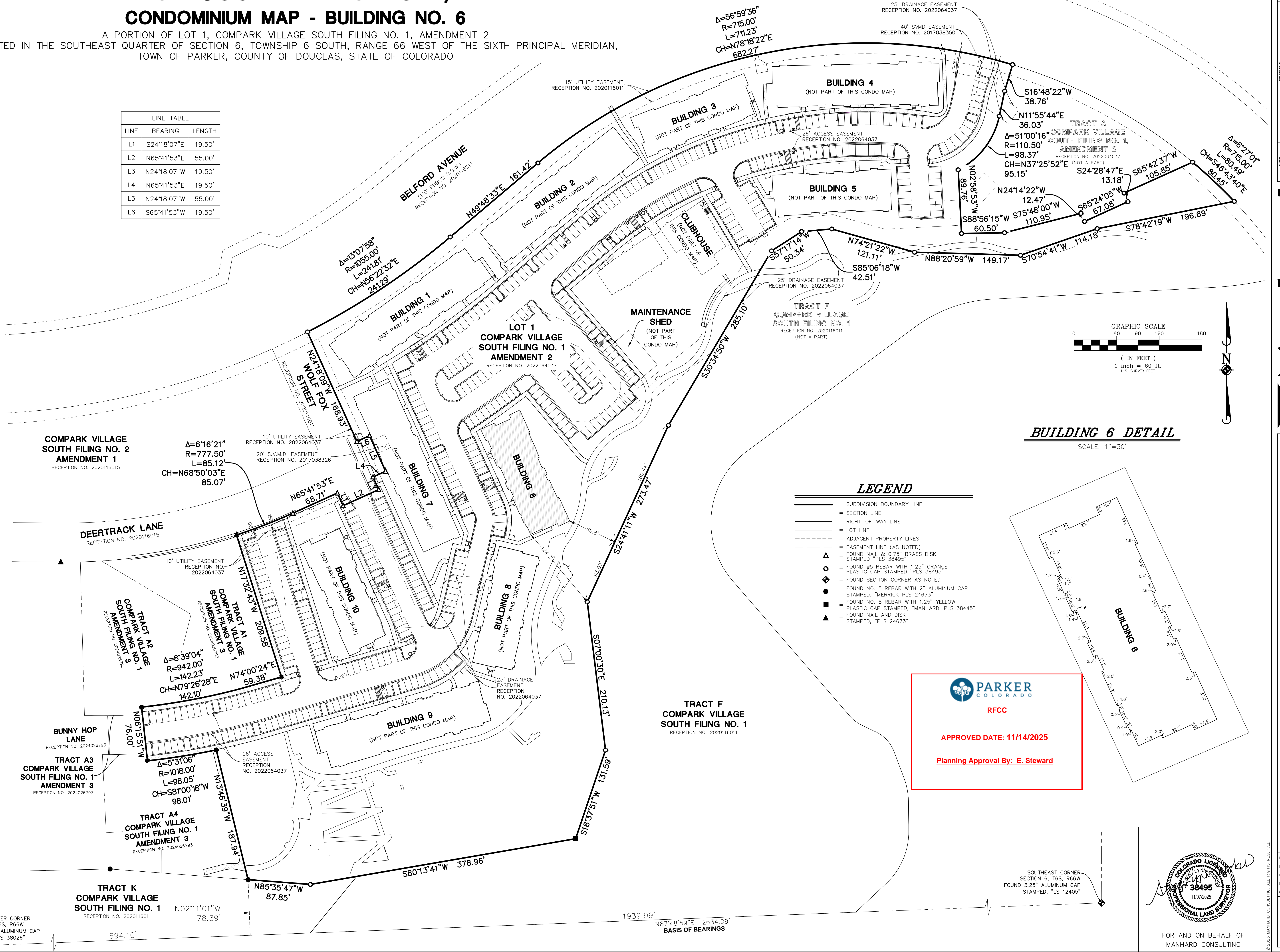


COMPARK VILLAGE SOUTH FILING NO. 1, AMENDMENT 2

CONDOMINIUM MAP - BUILDING NO. 6

A PORTION OF LOT 1, COMPARK VILLAGE SOUTH FILING NO. 1, AMENDMENT 2
 LOCATED IN THE SOUTHEAST QUARTER OF SECTION 6, TOWNSHIP 6 SOUTH, RANGE 66 WEST OF THE SIXTH PRINCIPAL MERIDIAN,
 TOWN OF PARKER, COUNTY OF DOUGLAS, STATE OF COLORADO

LINE	BEARING	LENGTH
L1	S24°18'07"E	19.50'
L2	N65°41'53"E	55.00'
L3	N24°18'07"W	19.50'
L4	N65°41'53"E	19.50'
L5	N24°18'07"W	55.00'
L6	S65°41'53"W	19.50'

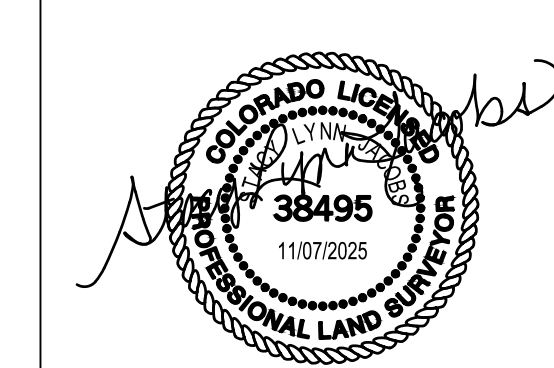


BUILDING 6 DETAIL
 SCALE: 1"=30'

- LEGEND**
- SUBDIVISION BOUNDARY LINE
 - - - SECTION LINE
 - - - RIGHT-OF-WAY LINE
 - - - LOT LINE
 - - - ADJACENT PROPERTY LINES
 - - - EASEMENT LINE (AS NOTED)
 - △ FOUND NAIL & 0.75" BRASS DISK STAMPED "PLS 38495"
 - FOUND #5 REBAR WITH 1.25" ORANGE PLASTIC CAP STAMPED "PLS 38495"
 - ◇ FOUND SECTION CORNER AS NOTED
 - FOUND NO. 5 REBAR WITH 2" ALUMINUM CAP STAMPED, "MERRICK PLS 24673"
 - FOUND NO. 5 REBAR WITH 1.25" YELLOW PLASTIC CAP STAMPED, "MANHARD, PLS 38445"
 - ▲ FOUND NAIL AND DISK STAMPED, "PLS 24673"


PARKER COLORADO
RFCC
APPROVED DATE: 11/14/2025
Planning Approval By: E. Steward

SOUTHEAST CORNER
 SECTION 6, T6S, R66W
 FOUND 3.25" ALUMINUM CAP
 STAMPED, "PLS 12405"



FOR AND ON BEHALF OF
 MANHARD CONSULTING

Manhard CONSULTING

7600 East Orchard Road, Suite 100A, Greenwood Village, CO 80111, phone: 303.770.0800, manhard.com

Civil Engineering | Surveying & Geospatial Services | GIS | Water Resource Management | Construction Management

COMPARK VILLAGE SOUTH FILING NO. 1, AMENDMENT 2

TOWN OF PARKER, COUNTY OF DOUGLAS, STATE OF COLORADO

BUILDING NO. 6 - CONDOMINIUM MAP

PROJ. MGR.: SLJ

PROJ. ASSOC.: MKW

DRAWN BY: MKW

DATE: 12/10/24

SCALE: 1"=60'

SHEET

2 OF 5

CEC.PKC005

November 7, 2025 - 11:05 AM - \\manh-cd-nash\Projects\civ\Compark\Drawings\Condominium\Plot\CEC.PKC005 - Bldg6.dwg - Updated: Bk - editw

