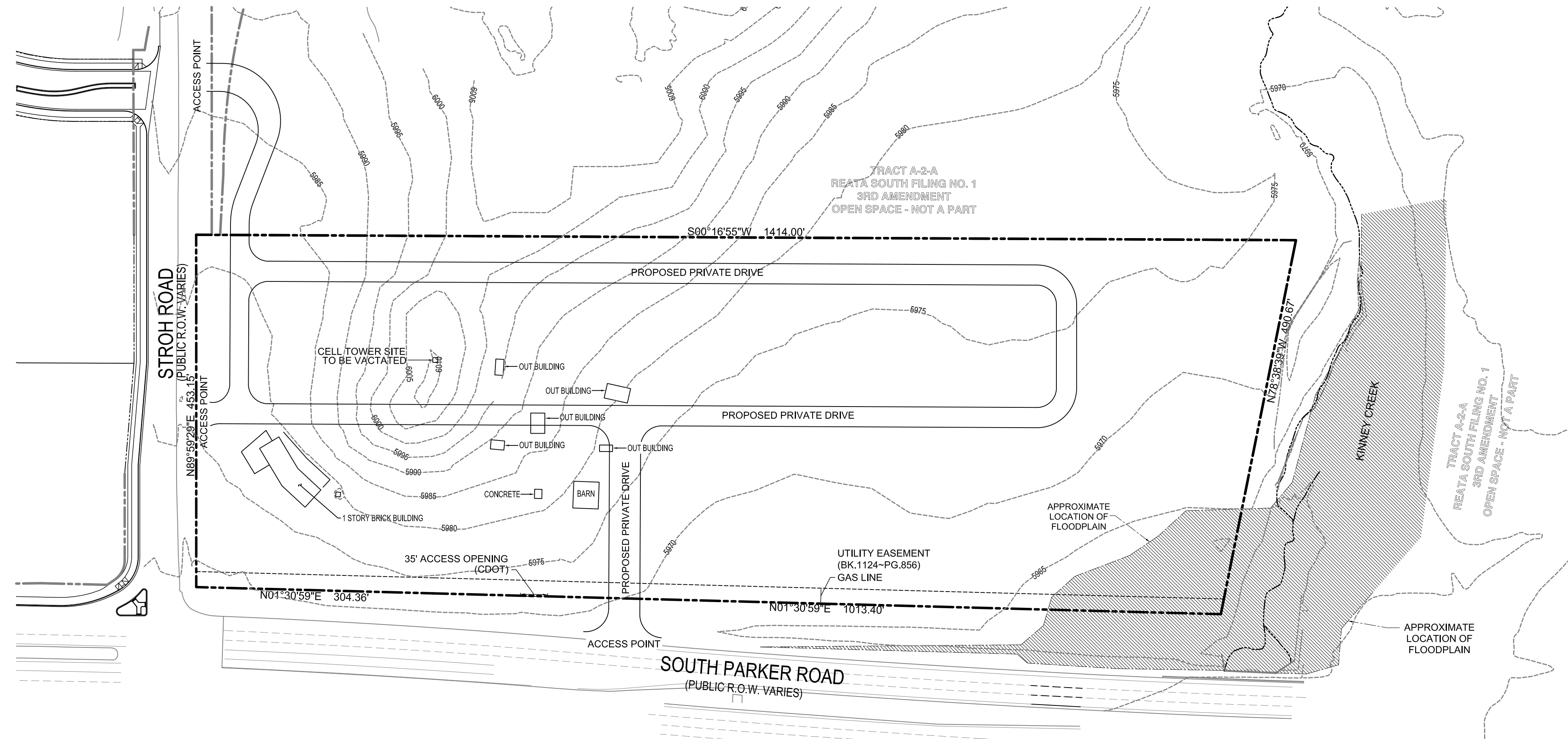


PARKER POINTE

LOTS 1 - 14, PARKER POINTE FILING NO. 1
 A PART SECTION 3, TOWNSHIP 7 SOUTH, RANGE 66 WEST OF THE SIXTH PRINCIPAL MERIDIAN
 TOWN OF PARKER, COUNTY OF DOUGLAS, STATE OF COLORADO



ZONING MAP EXHIBIT

1 inch = 100 ft.

SITE ZONING

TOWN OF PARKER - C

PREPARED BY

PERCEPTION DESIGN GROUP, INC.
 6901 S. PIERCE ST., SUITE #315
 LITTLETON, CO 80128
 (303) 232-8088
 CONTACT: JERRY DAVIDSON

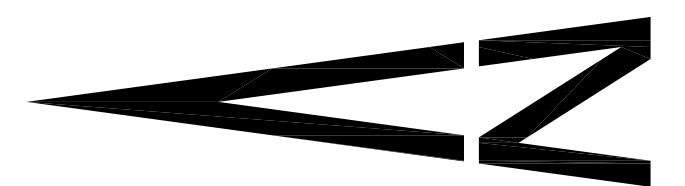
OWNER AND APPLICANT

PARKER & STROH, LLC
 975 LINCOLN STREET, SUITE 204
 DENVER, CO 80203
 (303) 699-3368
 CONTACT: DAN YACOVETTA

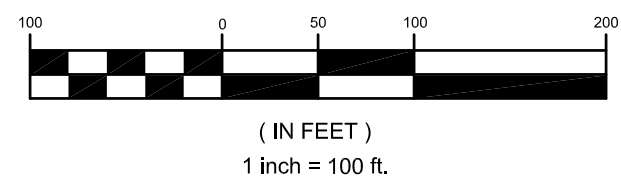
NOTE ALL EXISTING STRUCTURES
 ARE TO BE REMOVED



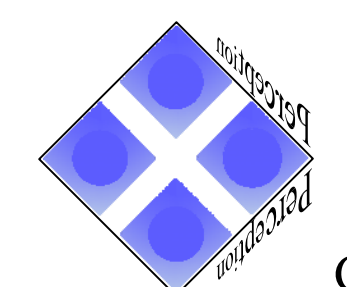
VICINITY MAP
 SCALE: 1" = 500'



GRAPHIC SCALE



NOVEMBER 21, 2017



Perception
 Design Group, Inc.

Consulting Civil Engineers

6901 South Pierce Street, Suite 315 Littleton, Colorado 80128
 303-232-8088